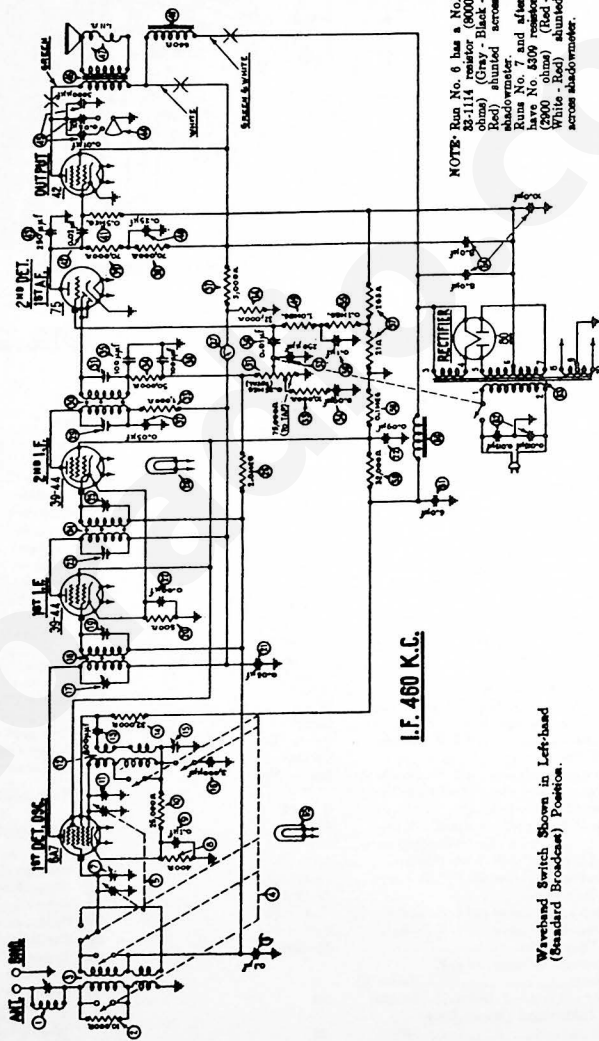


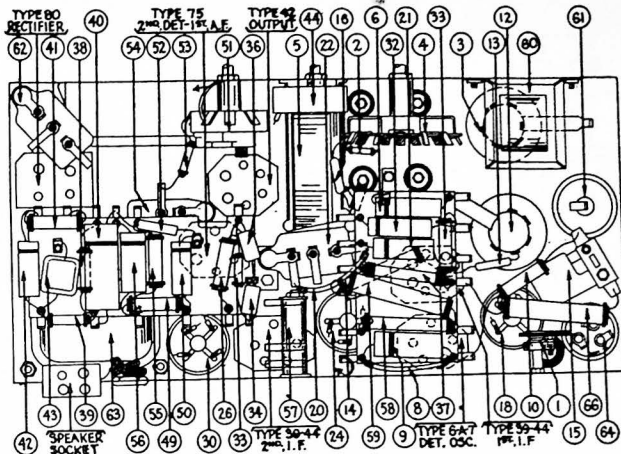
MODEL 29



NOTE- Run No. 6 has a No. 23-1114 resistor (8000 ohms) (Gray - Black - Red) shunted across substation 7 and 8. Run No. 4309 resistor (2500 ohms) (Red - White - Red) shunted across substation 7.

Wrechand Switch Shown in Left-hand (Standard Broadcast) Position.

I.F. 460 K.C.



REPLACEMENT PARTS MODEL 29

| Nos. on Diagram | Description | Part No. | Nos. on Diagram | Description | Part No. |
|-----------------|---|------------|-----------------|---|----------|
| 1 | Wave Trap..... | 36-5196 | 36 | Resistor (100,000 ohms) (White-White-Orange)..... | 4411 |
| 2 | Resistor (10,000 ohms) (Brown-Black-Orange)..... | 38-1000 | 44 | Condenser (.1 Mfd. Tubular)..... | 30-4123 |
| 3 | Antenna Transformer..... | 33-1280 | 37 | B. C. Resistor (363 ohms; 23 ohms; Wire-Wound)..... | 33-3069 |
| 4 | Wave-Band Switch..... | 42-1003 | 38 | Resistor (.1 Meg.) (White-White-Orange)..... | 37-7018 |
| 5 | Tuning Condenser Assembly..... | 31-1192 | 39 | Resistor (32,000 ohms) (Orange-Red-Orange)..... | 33-1086 |
| 6 | Condenser (.1 Mfd. Tubular)..... | 30-4122 | 40 | Filter Choke..... | 33-7018 |
| 7 | Compensating Condenser (Det.)..... | Part of 4 | 41 | Condenser (Electrolytic—6 Mfd.)..... | 30-3020 |
| 8 | Resistor (400 ohms Flexible Wire-Wound)..... | 33-3016 | 42 | Condenser (.015 Mfd. Twin—Bakelite Case)..... | 3739-E |
| 9 | Condenser (.1 Mfd. Tubular)..... | 30-4122 | 43 | Power Transformer..... | 33-7320 |
| 10 | Resistor (25,000 ohms) (Red-Green-Orange)..... | 4516 | 44 | Condenser (Electrolytic—8 Mfd., 8 Mfd., 10 Mfd.)..... | 30-3078 |
| 11 | Compensating Condenser (Osc. H. F.)..... | Part of 8 | 45 | Pilot Lamp (Dial)..... | 6008 |
| 12 | Oscillator Transformer..... | 33-1261 | 46 | Resistor (32,000 ohms) (Orange-Red-Orange)..... | 33-1086 |
| 13 | Condenser (.0008 Mfd. Mica)..... | 5678 | 47 | A. C. Cord and Plug Assembly..... | L-848-A |
| 14 | Resistor (32,000 ohms) (Orange-Red-Orange)..... | 3336 | 48 | Tube Shield..... | 36-1107 |
| 15 | Compensating Condenser (Osc. L. F.)..... | 040005 | 49 | Four-Prong Socket..... | 754a |
| 16 | Condenser (.003 Mfd. Mica)..... | 7801 | 50 | Five-Prong Socket..... | 7547 |
| 17 | Compensating Condenser (1st I. F. Primary)..... | Part of 15 | 51 | Six-Prong Socket..... | 7846 |
| 18 | First I. F. Transformer..... | 33-1262 | 52 | Seven-Prong Socket..... | 37-0206 |
| 19 | Compensating Condenser (1st I. F. Sec.)..... | Part of 15 | 53 | Speaker Socket..... | 4087 |
| 20 | Resistor (500 ohms Flexible Wire-Wound)..... | 6977 | 54 | Knob (Large)..... | 37-4081 |
| 21 | Condenser (.05 Mfd. Tubular)..... | 30-4123 | 55 | Knob (Small)..... | 37-4083 |
| 22 | Condenser (.09 Mfd. Twin) (Bakelite Block)..... | 4080-X | 56 | Dial Assembly..... | *81-1208 |
| 23 | Compensating Condenser (3d I. F. Pri.)..... | Part of 24 | 57 | Dial Scale..... | 37-5043 |
| 24 | 3d I. F. Transformer..... | 33-1268 | 58 | Chassis Mounting Screw..... | W-1345A |
| 25 | Compensating Condenser (3d I. F. Sec.)..... | Part of 24 | 59 | Chassis Mounting Foot (Steel)..... | 36-1983 |
| 26 | Resistor (2 Megohms) (Red-Black-Green)..... | 5878 | 60 | Chassis Mounting Foot (Rubber)..... | 37-4116 |
| 27 | Shadowmeter..... | 0407 | 61 | Chassis Mounting Foot Plate..... | 37-7497 |
| 28 | Pilot Lamp (Shadowmeter)..... | Part of 27 | 62 | Screw (Foot mtg.)..... | W-644A |
| 29 | Compensating Condenser (3d I. F. Pri.)..... | Part of 29 | | | |
| 30 | 3d I. F. Transformer..... | 33-1264 | | | |
| 31 | Compensating Condenser (3d I. F. Sec.)..... | Part of 29 | | | |
| 32 | Condenser (.05 Mfd. Tubular)..... | 30-4123 | | | |
| 33 | Resistor (1,000 ohms) (Brown-Black-Red)..... | 5687 | | | |
| 34 | Resistor (50,000 ohms) (Green-Brown-Orange)..... | 6096 | | | |
| 35 | Condenser (.0001 Mfd. Mica)..... | 30-1081 | | | |
| 36 | Condenser (.0001 Mfd. Mica)..... | 30-1081 | | | |
| 37 | Resistor (5,000 ohms) (Green-Black-Red)..... | 3586 | | | |
| 38 | Resistor (70,000 ohms) (Violet-Black-Orange)..... | 5895 | | | |
| 39 | Resistor (70,000 ohms) (Violet-Black-Orange)..... | 5895 | | | |

*Note: Some Model 29 sets use tuning condenser assembly No. 31-1260, which has dial assembly 31-1261. This is not interchangeable with 31-1192 and 31-1262.