

# PHILCO RADIO ATLAS OF THE WORLD

WXX..WINNIPEG

VE9CW..BOWMANVILLE

W1XK...BOSTON

WBXAL..CINCINNATI

WSXAU..PHILADELPHIA

W4XB..MIAMI

COH..HAVANA

MEXICO CITY

YY2RC..CARACAS

PRF5..RIO de JANEIRO

LSX..BUENOS AIRES

GSD..LONDON

DJD..BERLIN

FYA..PARIS

EAQ..MADRID

ZRO..ROME

SUZ..CAIRO

RNE..MOSCOW

ZTJ..JOHANNESBURG

ATLANTIC  
OCEAN

NEW EDITION -- PRICE FIFTY CENTS



# Foreword to Foreign Broadcast Reception

With a new 1936 American and Foreign Broadcast Philco, you are on the threshold of thrilling adventure and glorious entertainment. You'll be a Marco Polo, a Magellan or a Da Gama, faring forth at a touch of the dial into distant places and strange, exotic lands.

You'll hear voices and music from the far-flung corners of the earth that will reveal to you Philco's marvelous engineering perfection. For, properly installed with a Philco All-wave Aerial, a new Philco will bring you programs from across the seas with surprising clarity, regularity and volume! Used with this aerial, the Automatic Aerial Selector—which is built into every short-wave Philco—automatically switches-in the exact electrical values needed to maintain maximum power on each wave band.

Then too, if you are to enjoy short-wave reception to the utmost, you must know when and where to tune. It was to help you in this regard that this new Philco Radio Atlas was written. All the information contained herein

is authentic and accurate to the date of going to press. Follow it carefully and you will experience tremendously more exciting reception than those who tune blindly.

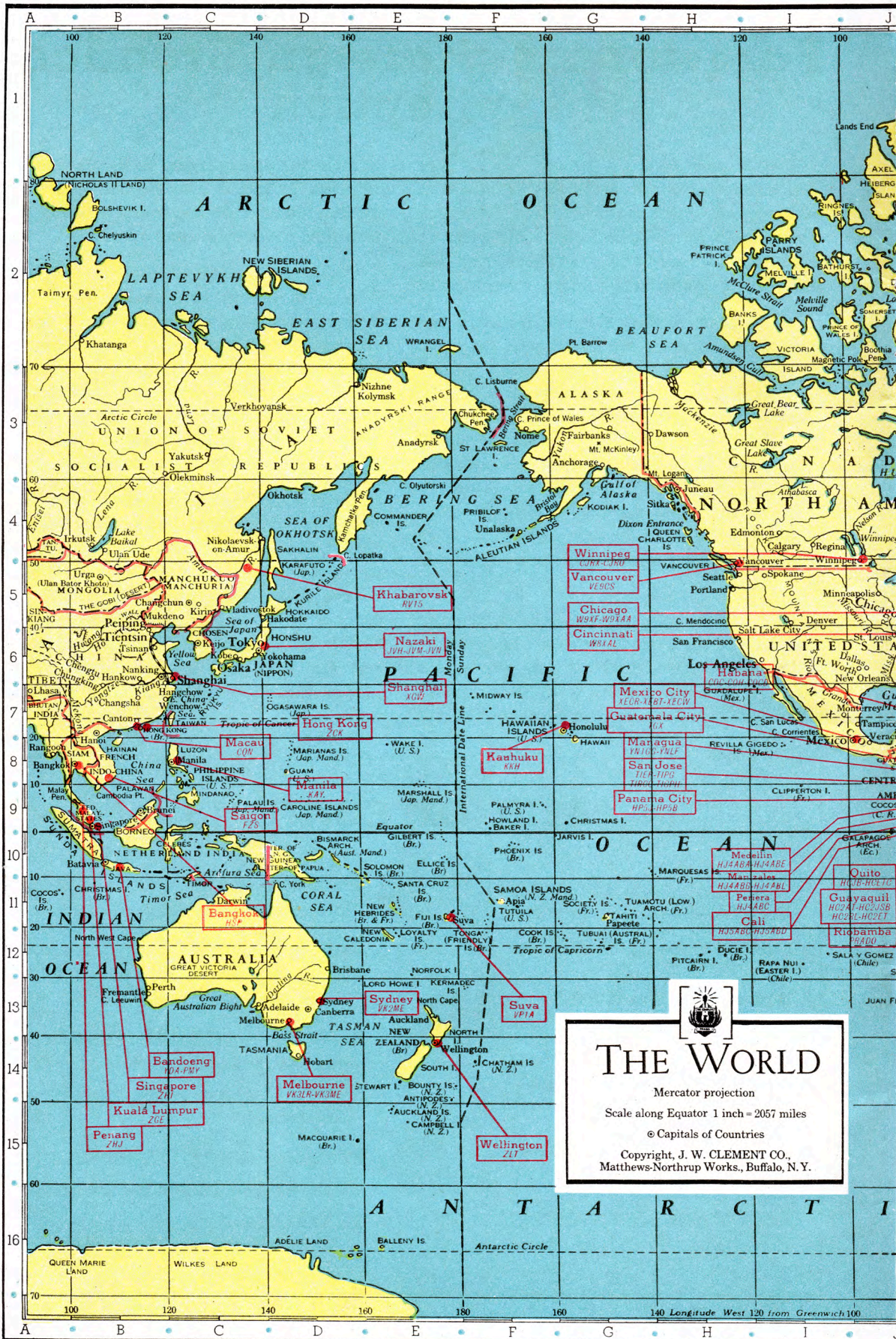
Philco dials are calibrated in megacycles. Thus, the station frequencies listed in this Atlas correspond closely to the actual dial settings at which these stations are received. After making sure the station you want to hear is on the air, set the wave band switch of your Philco to the section of the dial in which its frequency is located. Turn the dial to the frequency shown in the station list.

Then with the volume turned up so that you hear a rushing sound, move the dial slowly back and forth until the station comes in. Do not expect to hear a station every time it is on the air for there are many factors which govern short-wave reception such as skip distances, storms, your particular location, etc. But tune slowly and carefully. If the station can be heard at all, your Philco will bring it in.

## TABLE OF CONTENTS

	PAGE
World-Wide Airline Mileage Chart	} Inside Front Cover
Megacycle - Meter Conversion Table	
Foreword to Foreign Broadcast Reception	
<b>Radio Map of the WORLD</b> . . . . .	2-3
Short-Wave Stations of the World. . . . .	4-5
Photos and Stories of European Broadcasts . . . . .	6-7-8-9 and 20
<b>Radio Map of EUROPE</b> . . . . .	10-11
Photos and Stories of South American Broadcasts . . . . .	12-13 and 16
<b>Radio Map of SOUTH AMERICA</b>	14-15
Photos and Stories of Asiatic Broadcasts. . .	17

	PAGE
<b>Radio Map of ASIA</b> . . . . .	18-19
Photos and Stories of African Broadcasts.	21
<b>Radio Map of AFRICA</b> . . . . .	22-23
Photos and Stories of Australian and South Seas Broadcasts . . . . .	24-25
<b>Radio Map of OCEANIA (Australia and South Pacific)</b> . . . . .	26-27
Photos and Stories of North American Broadcasts . . . . .	28-29
<b>Radio Map of NORTH AMERICA</b>	30-31
North American Long-Wave Stations. . .	32
PHILCO Radio Advertisement . . . . .	Inside Back Cover





# Principal Short-Wave

Mega-cycles	Station	Location	Time (Eastern Standard)
21.54	W8XK	Pittsburgh, Pa.	7 to 9 A.M.
21.02	OKI	Prague, Czechoslovakia	Schedule Indefinite.
17.79	GSG	Daventry, England	6 A.M. to Noon
17.78	W3XAL	Bound Brook, N. J.	Daily 8 to 9 A.M., Tue. Thur., Fri. 2 to 3 P.M.
17.77	PHI	Huizen, Netherlands (Holland)	7:30 to 10:30 A.M. ex. Tue. and Wed.
17.76	DJE	Nauen, Germany	8 to 11:30 A.M.
17.75	HSP	Bangkok, Siam	4:30 to 6:30 A.M. Irregular.
15.37	HAS3	Budapest, Hungary	Sundays 9 to 10 A.M.
15.34	W2XAD	Schenectady, N. Y.	Sun. 10:30 A.M. to 4 P.M., Daily 2 to 3 P.M.
15.28	DJQ	Zeesen, Germany	8 to 11:30 A. M.
15.27	W2XE	Wayne, N. J.	10 A.M. to 5 P.M.
15.26	GSI	Daventry, England	12:30 to 2:15 P.M. Irregular.
15.25	FYA	Pontoise, France	Daily 6 to 10 A.M.
15.22	PCJ	Eindhoven, Netherlands (Holland)	7 to 11 A.M. Irregular.
15.21	W8XK	Pittsburgh, Pa.	10 A.M. to 7 P.M.
15.20	DJB	Zeesen, Germany	3:45 to 7:15, 8 to 11:30 A.M.
15.13	GSF	Daventry, England	6 A.M. to Noon and 4:15 to 5:45 P.M.
15.11	HVJ	Vatican City, Italy	10:30 to 10:45 A.M.
14.98	KAY	Manila, P. I.	5 to 7 A.M. and 7 to 8 P.M.
14.60	JVH	Nazaki, (Tokyo) Japan	4 to 8 A.M. and 8:30 to 9:30 P.M.
13.94	YOI	Bucharest, Roumania	Schedule Indefinite.
13.83	SUZ	Cairo, Egypt	Schedule Indefinite
13.07	VP1A	Suva, Fiji Islands	12:30 to 1:30 A.M., ex. Sat. and Sun.
12.83	RABAT	Rabat, Morocco	Sundays 7:30 to 9 A.M.
12.40	CT1GO	Paredes, Portugal	Tue., Thur., Fri. 1 to 2:15 P.M., Sun. 10 to 11:30 A.M.
12.00	RNE	Moscow, U. S. S. R.	Daily 1 to 6 P.M., Sun. 6 to 7 and 10 to 11 A.M., Wed. 6 to 7 A.M.
11.99	FZS	Saigon, French Indo-China	Phones Paris mornings
11.90	FYA	Pontoise, France	3 to 4 A.M., 10 A.M. to 1:15 P.M. and 2 to 5 P.M.
11.87	W8XK	Pittsburgh, Pa.	5 to 9 P.M.
11.86	GSE	Daventry, England	11 A.M. to Noon.
11.81	ZRO	Rome, Italy	8:15 to 10:15 A.M. and 2:30 to 5 P.M.
11.80	CO9WR	Sancti Spiritus, Cuba	4 to 6 and 9 to 11 P.M.
11.79	W1XAL	Boston, Mass.	Schedule Indefinite.
11.77	DJD	Zeesen, Germany	Noon to 4:30 P.M. and 5 to 10:30 P.M.
11.75	GSD	Daventry, England	12:15 to 2:15 A.M., 12:15 to 5:45 P.M.
11.71	HJ4ABA	Medellin, Colombia	11:30 A.M. to 1 P.M. and 6:30 to 10:30 P.M.
11.71	FYA	Pontoise, France	3 to 4 A.M., 6 to 9 P.M. and 10 P.M. to Midnight.
11.70	CJRX	Winnipeg, Canada	7 to 10 and 10:30 to 11 P.M.
11.57	HH2T	Port-au-Prince, Haiti	Schedule Indefinite.
11.05	ZLT	Wellington, N. Z.	1 to 7 A.M.
10.74	JVM	Nazaki, (Tokyo) Japan	1:30 to 7 A.M. and 7 to 11 P.M.
10.66	JVN	Nazaki, (Tokyo) Japan	3 to 8 A.M.
10.42	XGW	Shanghai, China	Tests near 6 A. M.
10.35	LSX	Buenos Aires, Argentina	6:15 to 7:15 P.M. Irregular.
10.33	ORK	Brussels, Belgium	1:30 to 3 P.M.
10.14	OPM	Leopoldville, Belgian Congo	9 to 11 A.M., 3 to 6 P.M.
10.05	SUV	Cairo, Egypt	Schedule Indefinite.
9.87	EAQ	Madrid, Spain	Daily 5:15 to 7:30 P.M., Sat. 1 to 3 P.M.
9.64	ZRO	Rome, Italy	Mon., Wed., Fri. 6 to 9:15 P.M.
9.59	CT1AA	Lisbon, Portugal	Tue., Thur., Sat. 3:30 to 6 P.M.
9.59	HBL	Geneva, Switzerland	5:30 to 6:15 P.M. Sat.
9.59	W3XAU	Philadelphia, Pa.	Noon to 6:45 P.M.
9.59	VK2ME	Sydney, Australia	Sun. Midnight to 2 A.M., 5 to 9 A.M.
9.59	HP5J	Panama City, Panama	11:45 A.M. to 1 P.M. and 7:30 to 10 P.M.
9.58	GSC	Daventry, England	6 to 8 and 10 to 11 P.M.
9.58	VK3LR	Melbourne, Australia	Daily 3:15 to 7:30 A.M.
9.57	LKJ1	Jeloy, Norway	5 to 8 A.M. and 11 A.M. to 6 P.M.
9.57	W1XK	Boston, Mass.	6 A.M. to Midnight.
9.57	VUY-VUB	Bombay, India	Wed. and Sat. 11 A.M. to 12:30 P.M.
9.57	DJA	Zeesen, Germany	12:30 to 2:15 A.M., 5 to 9:15 P.M.
9.57	SRI	Poznan, Poland	Schedule Indefinite.
9.54	DJN	Zeesen, Germany	12:30 to 2:15 A.M., 3:45 to 7:15 A.M., 5 to 10:30 P.M.
9.53	W2XAF	Schenectady, N. Y.	Daily 5:30 to 11 P.M.
9.51	GSB	Daventry, England	12:15 to 2:15 A.M., 12:15 to 5:45 P.M.
9.51	VK3ME	Melbourne, Australia	Wed., Thur., Fri., Sat. 5 to 7 A.M.
9.50	PRF5	Rio de Janeiro, Brazil	Daily 5:30 to 6:15 P.M.
9.43	COH	Habana, Cuba	10 A.M. to Noon, 4 to 6:30 P.M. and 8 to 10 P.M.
9.37	CT3AQ	Funchal, Madeira	Schedule Indefinite.
9.12	HAT4	Budapest, Hungary	Sundays 6 to 7 P.M.
8.75	ZCK	Hongkong, China	Daily 11:30 P.M. to 1:15 A.M., Mon. and Thur. 3 to 7 A.M.
8.45	HC2AT	Guayaquil, Ecuador	8 to 10 P.M. Irregular.
8.21	HCJB	Quito, Ecuador	Daily ex. Mon. 7:30 to 11:30 P.M.
8.05	CNR	Rabat, Morocco	Sundays 2:30 to 5 P.M.
7.86	HC2JSB	Guayaquil, Ecuador	8:15 to 11:15 P.M.
7.80	HBP	Geneva, Switzerland	Saturdays 5:30 to 6:15 P.M.
7.52	KKH	Kauhuku, Hawaii	Evenings, Irregular.
7.40	HJ3ABD	Bogota, Colombia	7:30 to 11 P.M.
7.38	XECR	Mexico City	Sundays 6 to 7 P.M.
7.28	HJ1ABD	Cartagena, Colombia	7:30 to 9 P.M.
7.22	HKE	Bogota, Colombia	Mon. 6 to 7 P.M., Tue. and Fri. 8 to 9 P.M.
7.17	CR6AA	Lobito, Angola, Africa	Wed. and Sat. 2:30 to 4:30 A.M.
7.08	PIIJ	Dordrecht, Netherlands (Holland)	Sat. 11:10 A.M. to 12:10 P.M.

# Stations of the World

Mega-cycles	Station	Location	Time (Eastern Standard)
7.03	HJ5ABC	Cali, Colombia	Mon., Tue., Wed., Fri. 7 to 9:30 P.M.
6.97	HCETC	Quito, Ecuador	Mon., Wed., Sat. 8 to 11:30 P.M.
6.90	HI3C	La Romana, D. R.	12:30 to 2 and 7:30 to 9:30 P.M.
6.81	HIH	San Pedro de Macoris, D. R.	Daily 12:10 to 1:40 P.M. and 6:40 to 7:40 P.M., Sun. 3 to 4 A.M. and 4 to 5 P.M.
6.71	TIEP	San Jose, Costa Rica	5 to 10 P.M. Irregular.
6.67	HC2RL	Guayaquil, Ecuador	Sun. 5:45 to 7:45 P.M., Tue. 9:15 to 11:15 P.M.
6.62	PRADO	Riobamba, Ecuador	Thursdays 9 to 11:30 P.M.
6.61	REN	Moscow, U. S. S. R.	1 to 6 P.M.
6.61	HI4D	Santo Domingo, D. R.	11:15 A.M. to 1:40 P.M. and 4:40 to 7:40 P.M.
6.55	TIPG	San Jose, Costa Rica	8:30 to 11 P.M. Irregular.
6.55	TIRCC	San Jose, Costa Rica	6 to 11:30 P.M. Irregular.
6.53	HIL	Santo Domingo, D. R.	Saturdays 8 to 10 P.M.
6.52	YV6RV	Valencia, Venezuela	Noon to 2 P.M. and 6 to 10 P.M.
6.48	HJ5ABD	Cali, Colombia	7 to 10 P.M.
6.45	HJ1ABB	Barranquilla, Colombia	Daily 4:30 to 10 P.M.
6.45	YN1GG	Managua, Nicaragua	7 to 10:30 P.M. Irregular.
6.37	YV4RC	Caracas, Venezuela	4:30 to 10:30 P.M.
6.31	HIZ	Santo Domingo, D. R.	7 to 10 P.M. Irregular.
6.25	HJ4ABC	Periera, Colombia	Daily 9:30 to 11 A.M. and 7 to 8 P.M.
6.25	OAX4B	Lima, Peru	Wednesdays 7 to 10:30 P.M.
6.20	CT1GO	Paredo, Portugal	Daily ex. Sat. and Mon. 7:20 to 8:30 P.M.
6.19	HI1A	Santiago de Caballeros, D. R.	11:40 A.M. to 1:40 P.M. and 7:40 to 8:40 P.M.
6.17	HJ2ABA	Tunja, Colombia	1 to 2 and 7 to 10 P.M.
6.17	HJ3ABF	Bogota, Colombia	Daily 6 to 11 P.M.
6.15	YV3RC	Caracas, Venezuela	10:30 A.M. to 1:30 P.M. and 4:30 to 9:30 P.M.
6.15	CO9GC	Santiago, Cuba	8:30 to 10 A.M., Noon to 1:30 P.M., 3:30 to 4:30 and 10 to 11 P.M.
6.15	CJRO	Winnipeg, Canada	7 to 10 and 10:30 to 11 P.M.
6.14	CSL	Lisbon, Portugal	1:30 to 7 P.M. Irregular.
6.14	W8XK	Pittsburgh, Pa.	9 P.M. to 1 A.M.
6.13	ZGE	Kuala Lumpur, Malay States	Sun., Tue., Fri. 6:40 to 8:40 P.M.
6.13	COCD	Habana, Cuba	10 P.M. to 12:30 A.M. Irregular
6.13	HJ1ABE	Cartagena, Colombia	Daily 7:30 to 9 P.M., Mon. 10:30 P.M.
6.12	VQ7LO	Nairobi, Kenya Colony	5:45 to 6:15 A.M. and 11 A.M. to 2 P.M.
6.12	YDA	Bandoeng, Java	5 to 11 A.M. Irregular.
6.12	W2XE	Wayne, N. J.	5 to 10 P.M.
6.11	YV2RC	Caracas, Venezuela	10:30 to 1 P.M. and 5:15 to 10 P.M.
6.11	VE9HX	Halifax, N. S.	8:30 to 11:30 A.M. and 5 to 10 P.M.
6.11	VUC	Calcutta, India	Daily 9:30 A.M. to Noon, Sat. 11:45 P.M. to 3 A.M.
6.10	HJ4ABB	Manizales, Colombia	8 to 11:30 P.M. Irregular.
6.10	W9XF	Chicago, Ill.	8 to 9 P.M. and Midnight to 1 A.M.
6.10	W3XAL	Bound Brook, N. J.	Mon., Wed., Sat. 4 to 5 P.M.
6.09	ZTJ	Johannesburg, S. Africa	3:30 A.M. to 7 A.M. and 9 A.M. to 4 P.M.
6.09	VE9GW	Bowmanville, Canada	Thur., Fri., Sat. 7 A.M. to 4 P.M., Sun. Noon to 8 P.M.
6.08	W9XAA	Chicago, Ill.	Schedule Indefinite.
6.08	ZHJ	Penang, S. S.	Daily 6:40 to 8:40 A.M.
6.08	CP5	La Paz, Bolivia	Daily 8 to 9 P.M.
6.07	VE9CS	Vancouver, B. C.	Daily 6 to 7 P.M., Sun. 1:45 P.M. to 1 A.M.
6.07	HJN	Bogota, Colombia	6 to 11 P.M. Irregular.
6.07	HF8S	Port-au-Prince, Haiti	Schedule Indefinite.
6.07	OER2	Vienna, Austria	1 to 6 and 7 to 10 P.M.
6.06	HJ4ABL	Manizales, Colombia	Daily 11 A.M. to Noon and 5:30 to 7:30 P.M.
6.06	OXY	Skamlebaek, Denmark	Daily 1 to 6 P.M.
6.06	W8XAL	Cincinnati, Ohio	5:30 A.M. to 7 P.M. and 10 P.M. to 1 A.M.
6.06	W3XAU	Philadelphia, Pa.	7 to 10 P.M.
6.04	HJ1ABG	Barranquilla, Colombia	6 to 10 P.M.
6.04	WAXB	Miami, Florida	11:30 A.M. to 2 P.M. and 8 P.M. to Midnight.
6.04	PR48	Fernambuco, Brazil	2:30 to 8:30 P.M.
6.03	HP5B	Panama City, Panama	Noon to 1 P.M. and 8 to 10:30 P.M.
6.02	DJC	Zeesen, Germany	Noon to 4:30 P.M. and 9:30 to 10:30 P.M.
6.02	CON	Macau, China	Mon. and Fri. 3 to 5 A.M.
6.01	HJ3ABH	Bogota, Colombia	Daily 10:30 A.M. to 2 P.M. and 6 to 11 P.M., Sun. 4 to 9 P.M.
6.01	COC	Habana, Cuba	9:30 A.M. to 12:30 P.M., 4 to 7, 8 to 10 P.M., Sat. 11:30 P.M.
6.01	ZHI	Singapore, Malay States	Mon., Wed., Thur. 5:40 to 8:10 A.M., Sat. 10:40 P.M. to 1:10 A.M.
6.00	XEBT	Mexico City	6 P.M. to 3 A.M. Irregular.
5.98	HIX	Santo Domingo, D. R.	Tue. and Fri. 8:10 to 10:10 P.M., Sun. 8:40 to 10:40 A.M. and 2:40 to 4:40 P.M.
5.98	XECW	Mexico City	4 to 4:30 P.M. and 10:30 P.M. to Midnight.
5.97	HVJ	Vatican City, Italy	Daily 2 to 2:15 P.M., Sun. 5 to 5:30 A.M.
5.96	YNLF	Managua, Nicaragua	6 P.M. to 1 A.M. Irregular.
5.94	HJ1ABJ	Santa Marta, Colombia	11 A.M. to 1 P.M. and 7 to 9 P.M.
5.93	HJ4ABE	Medellin, Colombia	10 to 11 A.M. and 5 to 9:30 P.M.
5.89	HJ2ABC	Cucuta, Colombia	11 A.M. to Noon and 6 to 9:30 P.M.
5.89	TGX	Guatemala City	11 A.M. to 2:30 P.M. and 6 to 10 P.M.
5.85	YV5RMO	Maracaibo, Venezuela	11 A.M. to 12:30 P.M. and 5 to 9 P.M.
5.82	TIGPH	San Jose, Costa Rica	6:15 to 11 P.M. Irregular.
5.78	HI1J	San Pedro de Macoris, D. R.	7 to 9:30 P.M. Irregular.
5.78	OAX4D	Lima, Peru	Wed. and Sat. 8 to 11:30 P.M.
5.15	PMY	Bandoeng, Java	6 A.M. to Noon.
4.60	HC2ET	Guayaquil, Ecuador	Wed. and Sat. 9 to 11 P.M.
4.25	RV15	Khabarovsk, U. S. S. R.	1 to 9 A.M.

The above information was furnished through the courtesy of the International Short-Wave Radio Club, East Liverpool, Ohio — an organization with members throughout the world. For the PHILCO owner who wishes additional information regarding short-wave reception, including changes in stations and time as they occur, a subscription to the "International Short-Wave Radio" magazine, published monthly by this club, will prove very interesting and helpful.

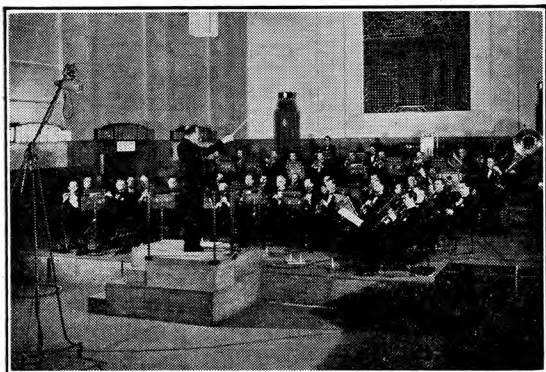
# COMEDY! DRAMA! SYMPHONIES!

You may hear all this and more from the

## GREAT BRITAIN

Location	Station	Freq.	Time (Eastern Standard)
Daventry	GSG	17.79	6 A.M. to Noon
Daventry	GSI	15.26	12:30 to 2:15 P.M. Irregular
Daventry	GSF	15.13	6 A.M. to Noon, 4:15 to 5:45 P.M.
Daventry	GSE	11.86	11 A.M. to Noon
Daventry	GSD	11.75	12:15 to 2:15 A.M., 12:15 to 5:45 P.M.
Daventry	GSC	9.58	6 to 8 & 10 to 11 P.M.
Daventry	GSB	9.51	12:15 to 2:15 A.M., 12:15 to 5:45 P.M.

Nowhere in all Europe is wholly delightful radio entertainment more abundant than in England. The British Broadcasting Corporation sends out a vast wealth of varied programs for the benefit of listeners all over the world. Some are directed toward Africa, others toward India and Australia, but a great many are sent out expressly for listeners in Canada and the United States.



The Wireless Military Band with B. Walton O'Donnell conducting. This famous musical organization is heard frequently by listeners to the big short-wave stations at Daventry, England. They are shown broadcasting from one of the beautiful studios at Broadcasting House London.

When conditions are favorable, you can hear programs frequently, for England broadcasts all day long from early morning until mid-evening. And what programs! Variety shows, brilliant dance music from the smart Hotel Mayfair, the Metropole, and other centers of London night life, splendid symphony concerts from St. George's

Hall, news dispatches several times a day, enlightening talks by internationally-known personages on economic and political topics, comedy sketches and recitals direct from Broadcasting House.



A dramatic sketch being broadcast from the studios of the British Broadcasting Corporation in Broadcasting House, London. Notice the unusual microphone equipment and the modernistic arrangement of clock and signal lights on the wall.

## NETHERLANDS (Holland)

Location	Station	Freq.	Time (Eastern Standard)
Huizen	PHI	17.77	7:30 to 10:30 A.M. ex. Tue. & Wed.
Eindhoven	PCJ	15.22	7 to 11 A.M. Irregular
Dordrecht	PIJ	7.08	Sat. 11:10 A.M. to 12:10 P.M.

The station at Huizen, PHI, is the one you'll hear most often from this little country. It is known throughout the world as "The Happy Station"—and with good reason. If you have never heard a program from this delightful broadcaster, you have a treat in store. Its programs are made up of rollicking Dutch folk tunes, modern dance music, light opera selections and the like—music of a care free, light-hearted nature. No wonder PHI is called "The Happy Station."

And no small part of its reputation is due to its famous announcer, Edward Startz, who acts as



Photo Courtesy Radio News  
Many American listeners hear Station PHI at Huizen, Netherlands, frequently. And here's the studio from which some of its broadcasts come.

**IMPORTANT!** To span oceans you need a scientifically designed aerial. Install a Philco All-wave Aerial to get everything your set is capable of giving.



# DANCE MUSIC! NEWS! TALKS!

## powerful short-wave stations in Europe!

master of ceremonies rather than announcer, on its delightful programs. Mr. Startz speaks seven languages and his happy-go-lucky, informal manner seems to take his audience right into the studio with him. Among regular listeners to his station, he is a distinct personality, a friend.

### GERMANY

<u>Location</u>	<u>Station</u>	<u>Freq.</u>	<u>Time (Eastern Standard)</u>
Nauen	DJE	17.76	8 to 11:30 A.M. Irregular
Zeesen	DJQ	15.28	8 to 11:30 A.M.
Zeesen	DJB	15.20	3:45 to 7:15, 8 to 11:30 A.M.
Zeesen	DJD	11.77	Noon to 4:30 P.M. & 5 to 10:30 P.M.
Zeesen	DJA	9.57	12:30 to 2:15 A.M. & 5 to 9:15 P.M.
Zeesen	DJN	9.54	12:30 to 2:15 A.M.; 3:45 to 7:15 A.M.; 5 to 10:30 P.M.
Zeesen	DJC	6.02	Noon to 4:30 P.M. & 9:30 to 10:30 P.M.

The big German short-wave stations at Zeesen, just outside Berlin, provide a really tremendous amount of fine entertainment for the radio listener. Germany takes its short-wave radio broadcasting most seriously. As a consequence, no effort is spared to make its programs interesting, educational and entirely enjoyable.

You'll hear stirring military band music, gay Bavarian folk music and dances, swinging German waltzes, fine symphonic concerts, recitals by Germany's most talented instrumentalists, news dispatches in English, and plays. In fact, there's hardly any type of program that is not broadcast from one or another of these stations.



Rudolph Kayssler, eminent German actor, addressing an American audience by way of the German short-wave stations at Zeesen.

Germany utilizes a complicated system of directional antennæ which project several transmissions toward America daily. These programs are sure to be among your favorites.

**LISTEN TO BOAKE CARTER  
OVER KEY COLUMBIA STATIONS**



This is an unusually striking photograph of the transmitting antennæ of the powerful German short-wave stations at Zeesen. A complicated system of directional antennæ enable the German programs to be received in America almost daily.

### BELGIUM

<u>Location</u>	<u>Station</u>	<u>Freq.</u>	<u>Time (Eastern Standard)</u>
Brussels	ORK	10.33	1:30 to 3 P.M.

This little country provides some really fine short-wave entertainment through its principal station at Ruysselede. Like so many of the European nations, Belgium foresaw the advantages of keeping in constant, daily touch with her colonial possessions. Thus, ORK is used extensively to communicate with the Belgian Congo. Tune to this station and you're quite likely to hear news and government reports, in Flemish, as well as delightful Flemish music.



A studio rehearsal at Brussels. Many of the programs you hear from ORK at Ruysselede, Belgium, come from this studio.

## FRANCE

Location	Station	Freq.	Time (Eastern Standard)
Pontoise	FYA	15.25	Daily 6 to 10 A.M.
Pontoise	FYA	11.90	3 to 4 A.M., 10 A.M. to 1:15 P.M. & 2 to 5 P.M.
Pontoise	FYA	11.71	3 to 4 A.M., 6 to 9 P.M. & 10 P.M. to Midnight

The gay, sprightly broadcasts from France have a sparkling quality. You'll truly delight in the songs of the boulevards, the toe-tickling dance music from the cafes in Montmartre and the happy folk songs that fairly breathe the atmosphere of the French countryside.

Recently the French government improved the transmitters and antenna systems of these three stations with the result that the French broadcasts come in surprisingly well. Whenever your spirits are low and you feel the need of gay music and happy song, by all means tune to France. You'll be more than repaid for your choice.

## ITALY

Location	Station	Freq.	Time (Eastern Standard)
Vatican City	HVJ	15.11	10:30 to 10:45 A.M.
Rome	2RO	11.81	8:15 to 10:15 A.M. & 2:30 to 5 P.M.
Rome	2RO	9.64	Mon., Wed., Fri. 6 to 9:15 P.M.
Vatican City	HVJ	5.97	Daily 2 to 2:15 P.M., Sun. 5 to 5:30 A.M.

Ever since Station 2RO at Rome came on the air it has been a favorite among American short-wave listeners. However, with the inception of the American Hour, the popularity of this station has greatly increased. No longer does the listener have to unravel yards and yards of rapid-fire Italian to identify this station, for the American Hour is broadcast in English.

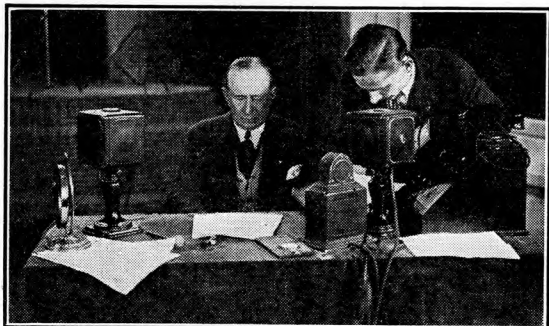


Photo Courtesy Radio News

Thousands of American short-wave listeners enjoy the American Hour from Rome three times a week. Above is shown Senator Guglielmo Marconi at the initial broadcast of this program from 2RO, during which he addressed his American audience.

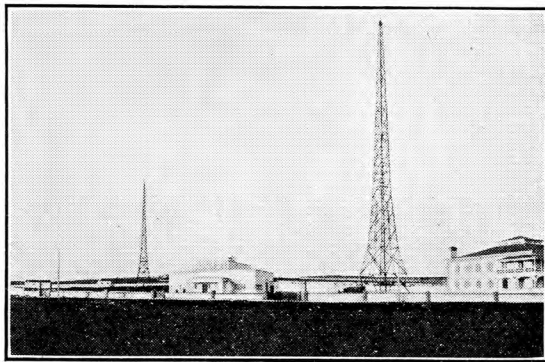
With the first broadcast of this program, Italy put into operation her new transmitting equipment which brought 2RO into many American homes at regular intervals. The programs are of

extremely high caliber—opera, as it's sung nowhere else in the world—news—dance music—symphonic concerts—recitals and even lessons in Italian.

## PORTUGAL

Location	Station	Freq.	Time (Eastern Standard)
Parede	CTIGO	12.40	Tue., Thur., Fri. 1 to 2:15 P.M. Sun. 10 to 11:30 A.M.
Lisbon	CT1AA	9.59	Tue., Thur., Sat. 3:30 to 6 P.M.
Parede	CTIGO	6.20	Daily ex. Sat. & Mon. 7:20 to 8:30 P.M. Sun. 11:40 A.M. to 1 P.M.
Lisbon	CSL	6.14	1:30 to 7 P.M. Irregular

No longer is this little country the mighty colonial empire it once was. But the spirit of Portugal still lives, as any listener knows who has tuned to the stirring broadcasts from Lisbon. All the color and care free gaiety which for centuries has characterized the Portuguese is still retained in their music. That is why the radio listener loves to turn his dial to one of these stations.



The Radio Club of Portugal is a thriving organization. The group of buildings shown above belong to the club and house the club's own station, CT1GO, which you'll hear often.

Like many other countries, Portugal has realized the value of favorable publicity and has improved and enlarged the transmitter of the government-owned station, CT1AA. Portuguese broadcasts now reach America with surprising regularity and volume. The Portuguese Radio Club's station, CT1GO at Parede, is also heard here in the United States.

## SWITZERLAND

Location	Station	Freq.	Time (Eastern Standard)
Geneva	HBL	9.59	5:30 to 6:15 P.M. Sat.
Geneva	HBP	7.80	Saturdays 5:30 to 6:15 P.M.

Those of you who are interested in events of international importance will appreciate broadcasts you are able to tune in from the League of Nations' stations at Geneva. From them you'll get a clearer insight into the significance of world

happenings. You'll hear the opinions and ideas of world figures. And thus you will be better able to formulate your own thoughts and theories.

The League of Nations' broadcasts go on the air once a week on Saturday afternoon. The program lasts 45 minutes, and consists of a 15-minute talk given in each of three languages, English first, then French, and lastly, Spanish.

## SOVIET UNION (Russia)

Location	Station	Freq.	Time (Eastern Standard)
Moscow	RNE	12.00	Daily 1 to 6 P.M., Sun. 6 to 7 & 10 to 11 A.M., Wed. 6 to 7 A.M.
Moscow	REN	6.61	1 to 6 P.M.

There's a certain excitement and adventure about tuning in the stations at Moscow. Perhaps it is because of the element of mystery that surrounds the land of the Soviets. Or perhaps it is because of the excellent symphonic and choral music one hears by short-wave from this city. At any rate, Moscow is one of the most sought after stations in all Europe. To hear a broadcast from RNE or REN is a real radio thrill. Also those interested in Soviet activity will find the Moscow stations a prolific source of information and education.



You've heard about collective farmers in the Soviet Union. Here's a group of them listening in the fields to a broadcast from Moscow during a rest interval.

## SPAIN

Location	Station	Freq.	Time (Eastern Standard)
Madrid	EAQ	9.87	Daily 5:15 to 7:30 P.M., Sat. 1 to 3 P.M.

Do you feel in the mood for a graceful tango? An exciting fandango or bolero? Or perhaps you'd like a dash of the bizarre as found in the weird melodies of the Spanish mountain folk. Then tune to EAQ at Madrid. The music from this station is thrilling and invigorating—different from

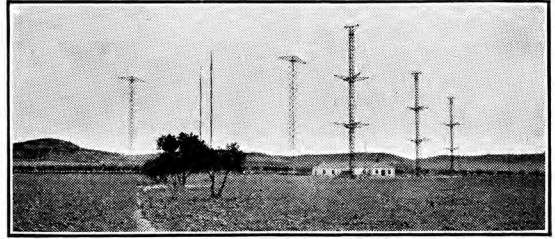


Photo Courtesy Radio News

Here is one of the most famous short-wave stations in the world—EAQ. Although its studios are located in Madrid, the transmitter, shown above, is at Aranuez. You'll get almost daily reception from this station.

anything broadcast elsewhere in Europe. It is redolent of bright sunshine, gleaming tile roofs, gay, laughing señoritas and the spirit of the fiesta.

Then, of course, you may hear other types of programs, too—classical works, dance music and news dispatches in English. Madrid is another of the European stations that are received with unusual regularity here in America.

## DENMARK and NORWAY

Location	Station	Freq.	Time (Eastern Standard)
Skamlebaek	OXY	6.06	Daily 1 to 6 P.M.
Jeloy	LKJ1	9.57	5 to 8 A.M. & 11 A.M. to 6 P.M.

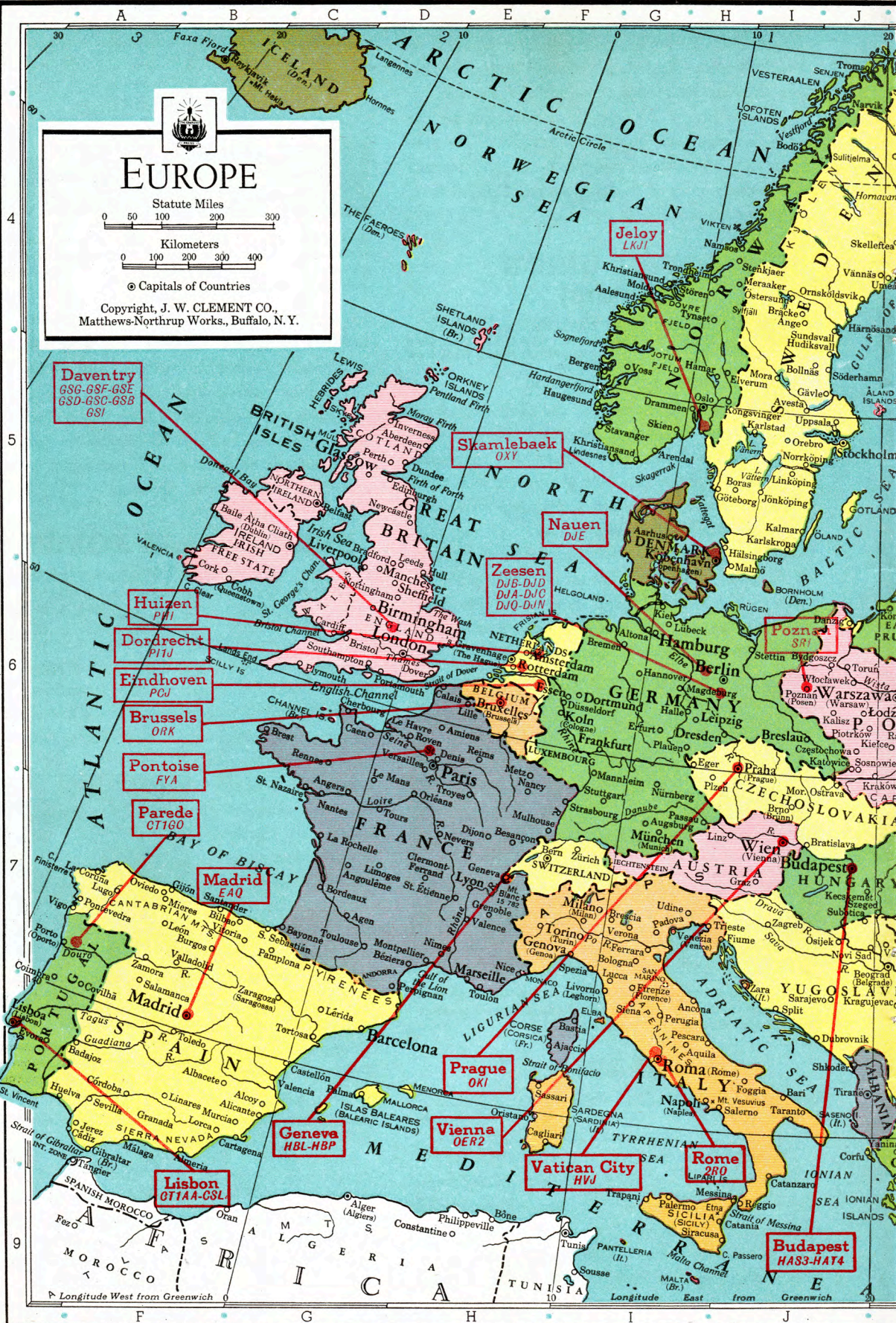
Because of its lively rhythm and happy character, Scandinavian music is most appealing. And, of course, the logical places to hear such music are Denmark and Norway. Both have short-wave stations that are occasionally heard here in America. Many a listener has experienced the thrill of hearing the clock in the century-old town hall of Copenhagen strike out the close of Denmark's broadcasting activities for the day, or delighted in programs of gay music from Jeloy, Norway. Once you hear these stations, you'll try for them often.




Grethe Otto, pleasant-voiced announcer at Copenhagen—one of the reasons why masculine listeners tune for this station.

(Continued on page 20)

**IMPORTANT!** To span oceans you need a scientifically designed aerial. Install a Philco All-wave Aerial to get everything your set is capable of giving.



  
**EUROPE**  
 Statute Miles  
 0 50 100 200 300  
 Kilometers  
 0 100 200 300 400  
 © Capitals of Countries  
 Copyright, J. W. CLEMENT CO.,  
 Matthews-Northrup Works, Buffalo, N. Y.

**Daventry**  
 GSG-GSF-GSE  
 GSD-GSC-GSB  
 GSI

**Huizen**  
 PII

**Dordrecht**  
 PIIJ

**Eindhoven**  
 PGJ

**Brussels**  
 ORK

**Pontoise**  
 FYA

**Parade**  
 CT160

**Madrid**  
 EAQ

**Madrid**

**Lisbon**  
 GT1AA-CSL

**Geneva**  
 HBL-NBP

**Vienna**  
 OER2

**Vatican City**  
 HVJ

**Rome**  
 LIPAH2

**Prague**  
 OKI

**Budapest**  
 HAS3-HAT4

**Skamlebaek**  
 OXY

**Nauen**  
 DJE

**Zeesen**  
 DJB-DJD  
 DJA-DJO  
 DJQ-DJN

**Poznań**  
 SRI

**København**

**Hamburg**

**Warsaw**

**Berlin**

**Budapest**

**Wien**

**Prague**

**Rome**

**Napoli**

**Prague**

**Budapest**

**Napoli**

**Skamlebaek**

**Nauen**

**Zeesen**

**Poznań**

**København**

**Hamburg**

**Warsaw**

**Berlin**

**Budapest**

**Wien**

**Prague**

**Rome**

**Napoli**

**Prague**

**Budapest**

**Napoli**

**Skamlebaek**

**Nauen**

**Zeesen**

**Poznań**

**København**

**Hamburg**

**Warsaw**

**Berlin**

**Budapest**

**Wien**

**Prague**

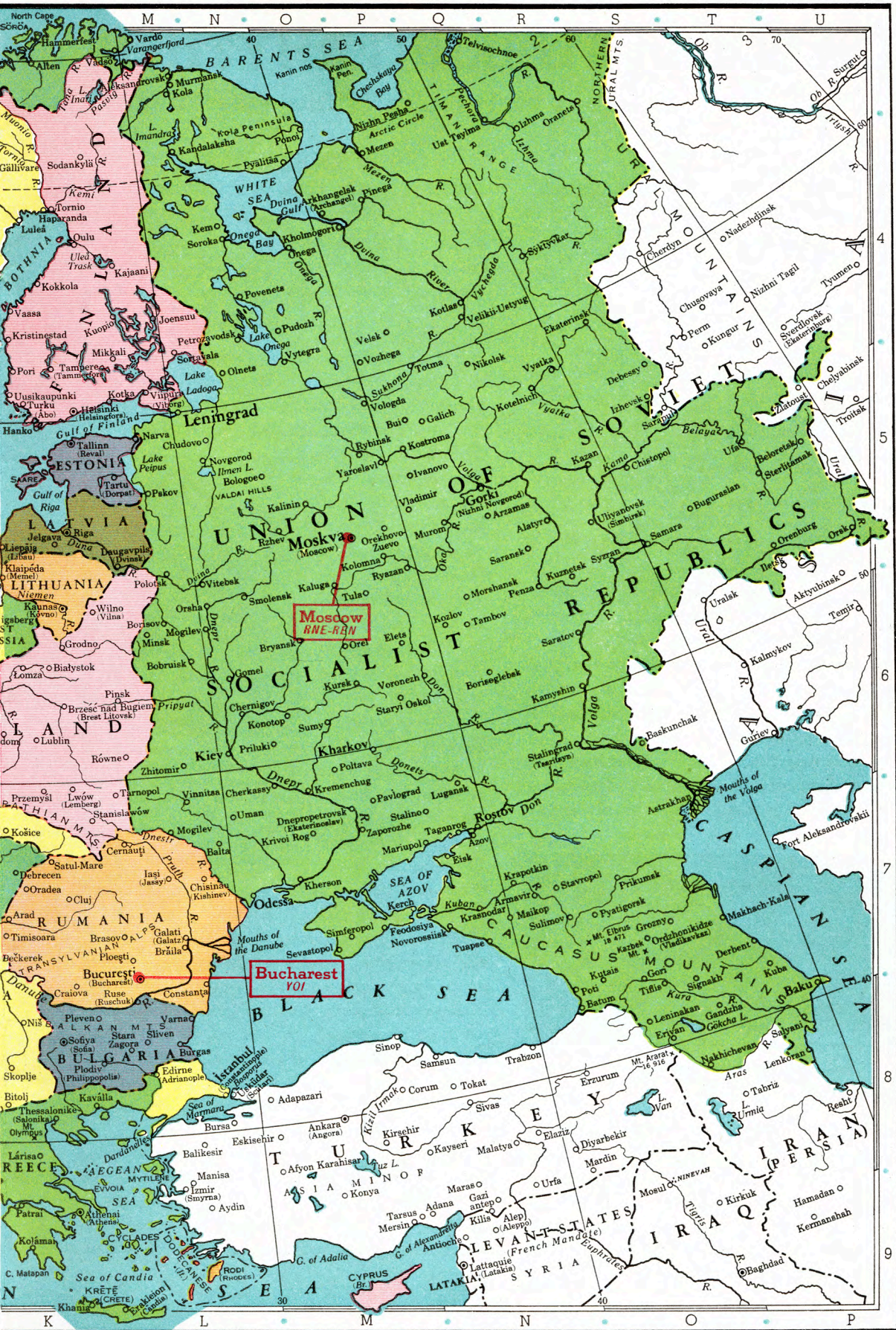
**Rome**

**Napoli**

**Prague**

**Budapest**

**Napoli**



# FOR PULSE-STIRRING RHYTHMS

There's a vast wealth of fine entertainment

## COLOMBIA

Location	Station	Freq.	Time (Eastern Standard)
Medellin	HJ4ABA	11.71	Noon to 2 P.M. & 6 to 11 P.M.
Bogota	HJ3ABD	7.40	7:30 to 11 P.M.
Cartagena	HJ1ABD	7.28	7:30 to 9 P.M.
Bogota	HKE	7.22	Mon. 6 to 7 P.M. Tue., Fri. 8 to 9 P.M.
Cali	HJ5ABC	7.03	Mon., Tue., Wed., Fri. 7 to 9:30 P.M.
Cali	HJ5ABD	6.48	7 to 10 P.M.
Barranquilla	HJ1ABB	6.45	Daily 4:30 to 10 P.M.
Periera	HJ4ABC	6.25	Daily 9:30 to 11 A.M. & 7 to 8 P.M.
Tunja	HJ2ABA	6.17	1 to 2 & 7 to 10 P.M.
Bogota	HJ3ABF	6.17	Daily 6 to 11 P.M.
Cartagena	HJ1ABE	6.13	Daily 7:30 to 9 P.M. Mon. 10:30 P.M.
Manizales	HJ4ABB	6.10	Daily 11 A.M. to Noon & 5:30 to 7:30 P.M.
Bogota	HJN	6.07	6 to 11 P.M. Irregular
Manizales	HJ4ABL	6.06	Daily 11 A.M. to Noon & 5:30 to 7:30 P.M.
Barranquilla	HJ1ABG	6.04	6 to 10 P.M. Irregular
Bogota	HJ3ABH	6.01	Daily 10:30 A.M. to 2 P.M. & 6 to 11 P.M., Sun. 4 to 9 P.M.
Santa Marta	HJ1ABJ	5.94	11 A.M. to 1 P.M. & 7 to 9 P.M.
Medellin	HJ4ABE	5.93	5 to 11 P.M.
Cucuta	HJ2ABC	5.89	11 A.M. to Noon & 6 to 9:30 P.M.

As you can see from the size of the station listings above, Colombia has gone in for short-wave broadcasting in a big way. Practically every city of any size in this country has one or more short-wave stations that can be heard in America. Many give station announcements in both Spanish and English for easy identification.

And what programs! Melodic tangos! Rhythmic rhumbas! Pulse-stirring paso dobles! Fascinating native folk songs played and sung by native musicians!

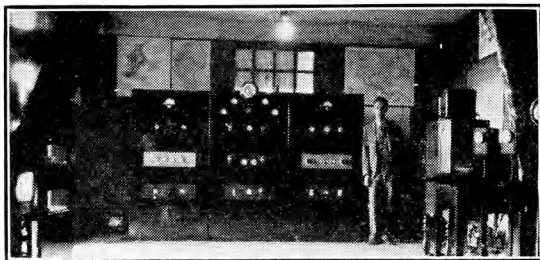


Photo Courtesy Radio News

One of the many fine stations you may hear from Colombia, South America. It is HJ4ABB at Manizales. Its operator, Albert Hoyn, stands beside the control panel.

You'll find Colombia a most prolific source of enjoyable entertainment. The stations at Barranquilla, Medellin, and Cali, especially, are sure to be among your favorites for evening entertainment because they are received almost nightly with splendid volume and clarity. For sparkling, rhythmic music tune to Colombia.

## VENEZUELA

Location	Station	Freq.	Time (Eastern Standard)
Valencia	YV6RV	6.52	Noon to 2 P.M. & 6 to 10 P.M.
Caracas	YV4RC	6.37	4:30 to 10:30 P.M.
Caracas	YV3RC	6.15	10:30 A.M. to 1:30 P.M. & 4:30 to 9:30 P.M.
Caracas	YV2RC	6.11	10:30 A.M. to 1 P.M. & 5:15 to 10 P.M.
Maracaibo	YV5RMO	5.85	11 A.M. to 12:30 P.M. & 5 to 9 P.M.

There's romance in the very sound of such names as Caracas, Valencia and Maracaibo! And there's plenty of romantic entertainment broadcast by the short-wave stations in these Venezuelan cities!

The South Americans are a music-loving people. Music is their principal means of recreation and relaxation. So, when you tune to Venezuela, you can be sure you'll hear programs that are full of color and rhythm.

South American music has enjoyed an even-increasing wave of popularity among Americans during the past few years. Listen to any dance



The little dark-eyed lady who is cuddling the microphone so affectionately is Josefina Carcano, actress and singer, who has helped so greatly in making YV2RC, Caracas, one of the most popular of all South American stations.

program right here at home and notice how many tangos, rhumbas and paso dobles are included.

Venezuela is a mountainous country. Thus, the transmitting towers of its principal short-wave stations are located at very high altitudes. Perhaps this explains why the Venezuelan stations are heard consistently by listeners here in America. Venezuelan time is almost the same as that of the eastern part of the United States and therefore these stations are excellent sources of delightful evening entertainment.

Many short-wave fans make it a practice to send the stations reports of reception in order to receive verification cards which they can display to their friends. The Caracas stations oblige such writers with handsome cards bearing a picture of the transmitter.

# -TUNE TO SOUTH AMERICA!

broadcast from below the blue Caribbean!



Rosario Lozada, one of the reasons why thousands of short-wave receivers are tuned to YV2RC, Caracas, each evening.

## ECUADOR

Location	Station	Freq.	Time (Eastern Standard)
Guayaquil	HC2AT	8.45	8 to 10 P.M. Irregular
Quito	HCJB	8.21	Daily ex. Mon. 7:30 to 11:30 P.M.
Guayaquil	HC2JSB	7.86	8:15 to 11:15 P.M.
Quito	HCETC	6.97	Mon., Wed., Sat. 8 to 11:30 P.M.
Guayaquil	HC2RL	6.67	Sun. 5:45 to 8 P.M., Tue. 9:15 to 11:45 P.M.
Riobamba	PRADO	6.62	Thur. 9 to 11:30 P.M.
Guayaquil	HC2ET	4.60	Wed. & Sat. 9 to 11 P.M.

Of all the South American countries which broadcast by short-wave, none provides finer entertainment than this little nation lying right on

the equator. Through HC2RL at Guayaquil, for instance, almost every type of program is provided, from splendid operas to modern dance music and folk tunes. Many a Philco owner makes it a point to tune to the stations at Guayaquil, Riobamba and Quito regularly. These stations have adequate power and surprising volume.

## PERU

Location	Station	Freq.	Time (Eastern Standard)
Lima	OAX4B	6.25	Wed. 7 to 10:30 P.M.
Lima	OAX4D	5.78	Wed. & Sat. 8 to 11:30 P.M.

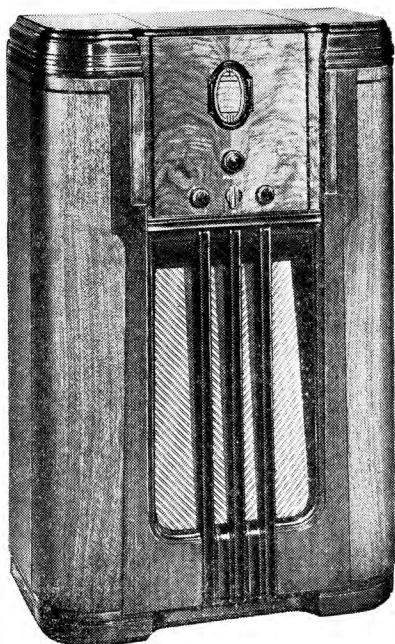
It has been only during the past few months that stations in Peru have been heard consistently in America. The Peruvians evidently have been envious of the manner in which the short-wave broadcasts of their neighbors have been enthusiastically welcomed by listeners throughout the Western World, and as a result have improved their broadcasting equipment and adopted more regular schedules. For now the Peruvian stations are providing fine entertainment regularly. You'll find them another delightful source of rhythmic music.

*(Continued on page 16)*

# SPAN THE OCEANS

with this New 1936

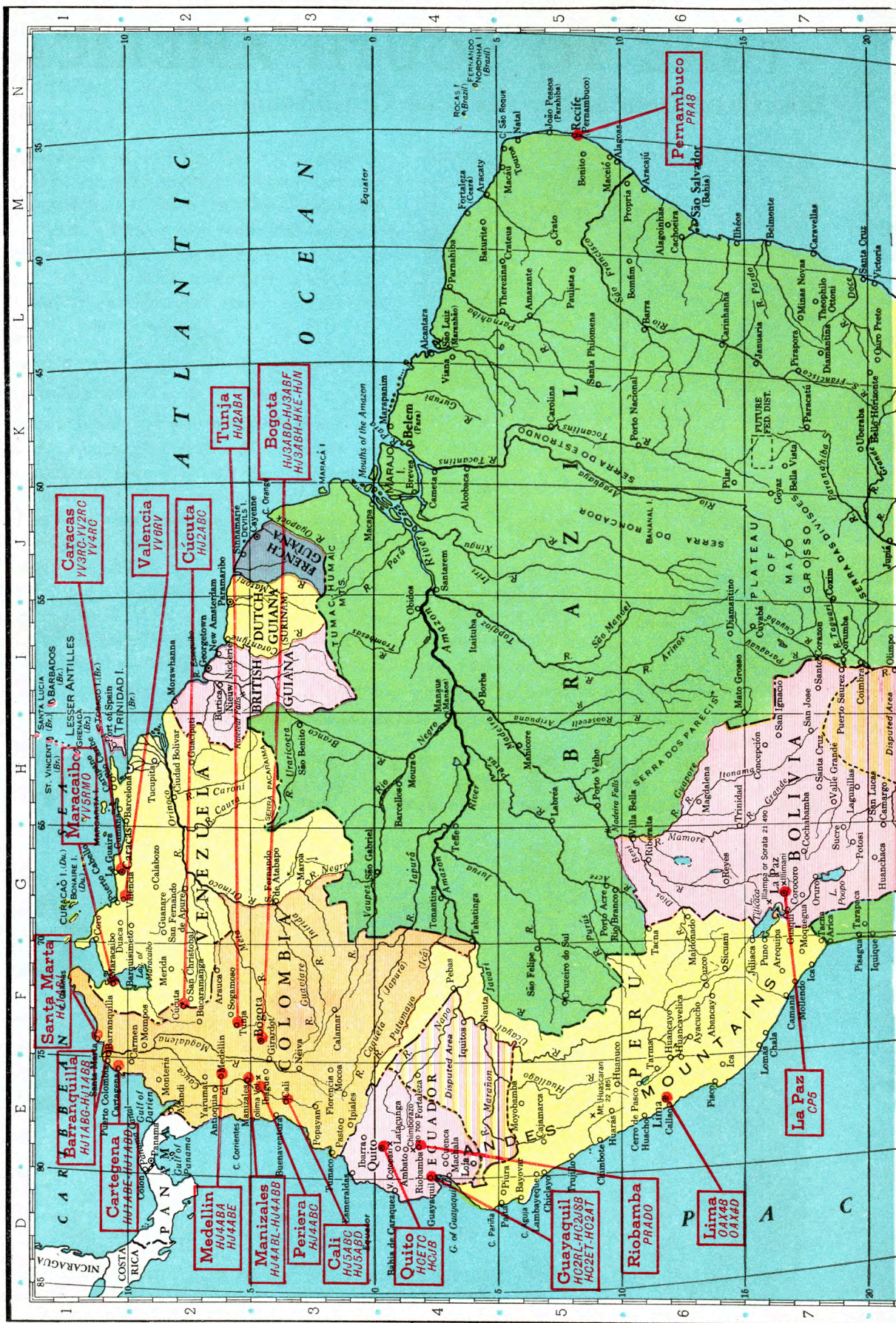
# PHILCO



Enjoy the most exciting reception in all radio history! From Rome to Rio — from Melbourne to Madrid — a new 1936 Philco, properly installed with a Philco All-wave Aerial, brings you foreign programs more perfectly than ever before! Unequaled tone — exquisite beauty! Every worth while feature in radio!

**PHILCO 660X** An Inclined Sounding Board model that includes such outstanding features as Program Control, Shadow Tuning, Automatic Aerial Selector, Precision Radio Dial, Automatic Bass Compensation, Super Class A Audio System, etc. Beautiful hand-rubbed cabinet of selected Butt Walnut.

**EASY TERMS — Liberal Trade-in Allowance**



**Santa Marta**  
H244BA

**Barranquilla**  
HJ44BG-HJ44BB

**Cartagena**  
HJ44AB-HJ44BB

**Medellin**  
HJ44AB-HJ44BE

**Manizales**  
HJ44BL-HJ44BB

**Pereira**  
HJ44BC

**Cali**  
HJ44BC-HJ44BB

**Quito**  
HJ44BC-HJ44BB

**Guayaquil**  
HJ44BL-HJ44BB

**Lima**  
OJ44AS-OJ44AD

**Ribamba**  
PR40

**La Paz**  
CP5

**Santa Marta**  
H244BA

**Maracaibo**  
YV3RM0

**Caracas**  
YV3RC-YV2RC  
YV44RG

**Valencia**  
YV6RV

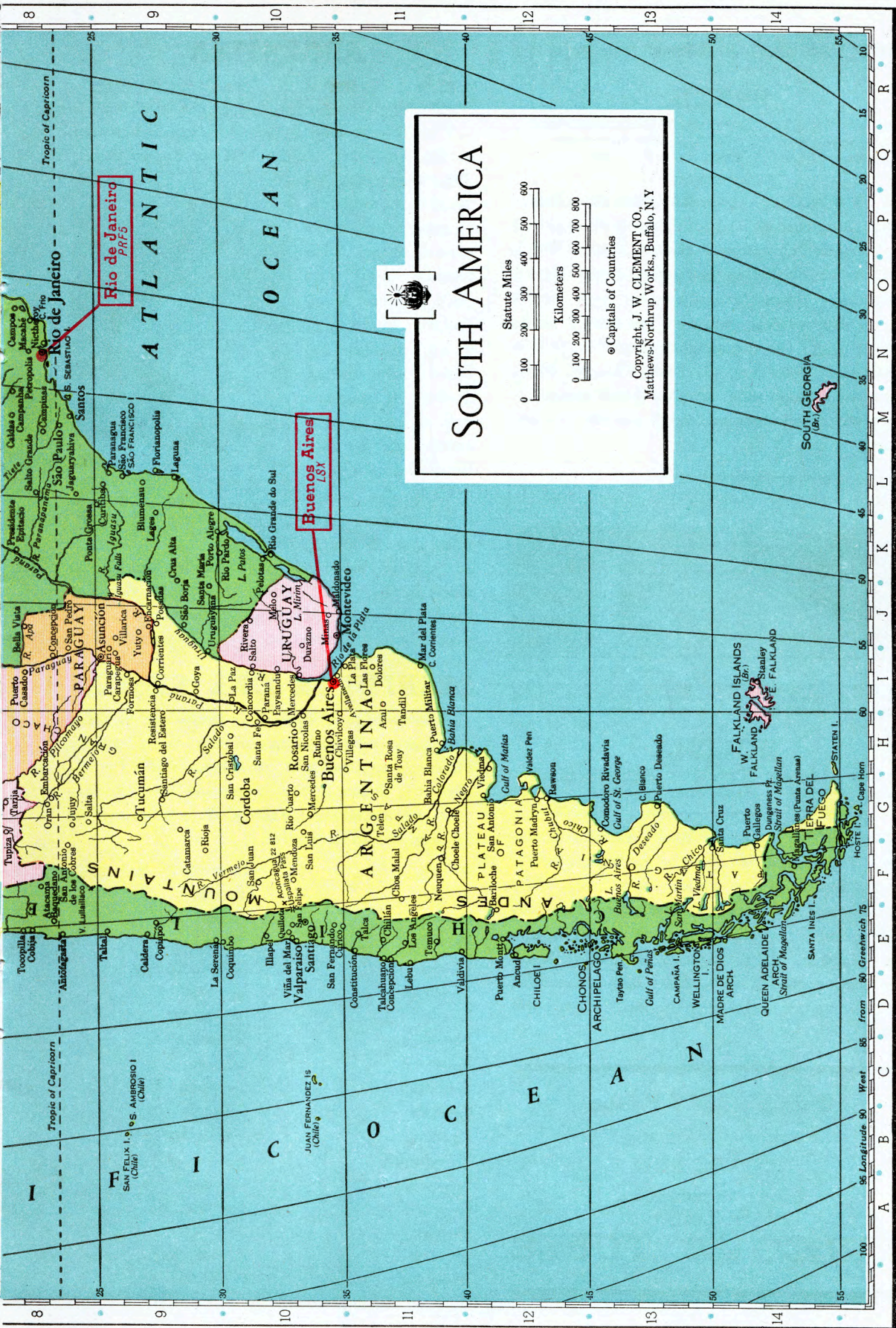
**Cúcuta**  
HJ24BC

**Tunja**  
HJ24BA

**Bogotá**  
HJ34BD-HJ34BF  
HJ34BH-HK-HJ44BN

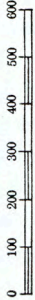
**Fernambuco**  
PR48



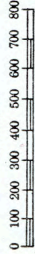


# SOUTH AMERICA

Statute Miles



Kilometers



○ Capitals of Countries

Copyright, J. W. CLEMENT CO.,  
Mathews-Northrup Works, Buffalo, N. Y.

## BRAZIL

Location	Station	Freq.	Time (Eastern Standard)
Rio de Janeiro	PRF5	9.50	Daily 5:30 to 6:15 P.M.
Pernambuco	PRA8	6.04	2:30 to 8:30 P.M.

While Brazil is not the prolific short-wave broadcaster that many of its South American neighbors are, its powerful station at Rio de Janeiro, PRF5, broadcasts some highly interesting entertainment every day. When this station first went on the air, its identity was unknown for several weeks because of its varying announcements entirely in Portuguese. However, the Radio Club of Brazil began to broadcast programs over it and announcements were then made in English and the mystery solved.

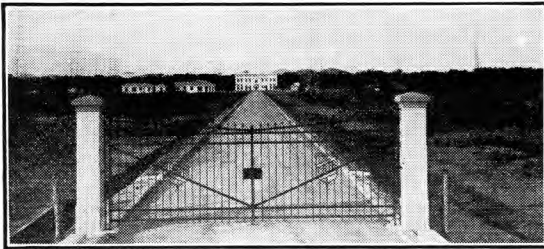


Photo Courtesy Radio News

Entrance to Station PRF5 at Rio de Janeiro—for some time a mystery station to the world's short-wave listeners. Thick jungle was cleared to build this popular broadcaster.

## BOLIVIA

Location	Station	Freq.	Time (Eastern Standard)
La Paz	CP5	6.08	Daily 8 to 9 P.M.

Located high up in the Andes Mountains, station CP5 at La Paz is said to be the highest broadcasting station in the world. It puts out daily transmissions and its splendid situation has made its programs heard throughout the North American continent. Like programs from other South American countries, those from Bolivia are filled with the sparkle and gaiety inherent in the Latin race.

### Today's LOW Prices

make it advantageous to

### RE-TUBE NOW

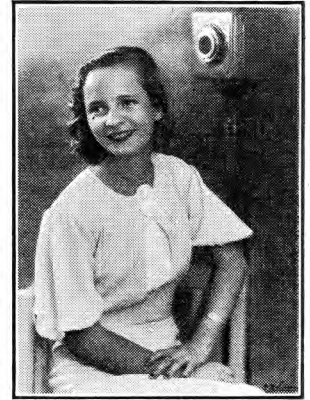
Improve the performance  
of your radio with

**PHILCO** High-Efficiency **TUBES**

## ARGENTINA

Location	Station	Freq.	Time (Eastern Standard)
Buenos Aires	LSX	10.35	6:15 to 7:15 P.M. Irregular

When Commander Byrd and his expedition were in the Antarctic, station LSX at Buenos Aires, Argentina, provided some of the most fascinating short-wave entertainment the listener could possibly wish for. Now, however, the Argentine stations are heard only during special test programs and when special events are being broadcast.



Bibita Bravo, charming young pianist, whose playing of both American and Latin-American selections has endeared herself to listeners to Station YV2RC at Caracas.

Chile also possesses short-wave stations, one of which, at Santiago, has been heard occasionally by listeners in the United States. However, it does not have a definite broadcasting schedule and is used primarily for commercial phone communication.

## SPANISH IN ONE LESSON

A knowledge of Spanish is invaluable to those who listen to South American short-wave stations. However, to those who do not have this knowledge, the following table showing how the letters and numerals sound when pronounced in Spanish, should be helpful.

A—ah	S—essay
B—bay	T—tay
C—say	U—oo
D—day	V—vay
E—ay	W—doobleway
F—effay	X—ekis
G—hay	Y—egrey
H—ah-hay	Z—zed
I—ee	1—uno
J—hotah	2—doce
K—kah	3—trace
L—ellay	4—kuattro
M—emmay	5—sinko
N—ennay	6—sase
O—o	7—sate
P—pay	8—acho
Q—coo	9—nuayvay
R—erray	10—deeze

# LIKE ADVENTURE? TRY ASIA!

Here's a fertile field for radio exploration!

## JAPAN

Location	Station	Freq.	Time (Eastern Standard)
Nazaki(Tokyo) JVH		14.60	4 to 8 A.M. & 8:30 to 9:30 P.M.
Nazaki(Tokyo) JVM		10.74	1:30 to 7 A.M. & 7 to 11 P.M.
Nazaki(Tokyo) JVN		10.66	3 to 8 A.M.

A good example of how short-wave broadcasting is slowly but surely improving, enabling the listener to hear programs from the other side of the world, is found in the broadcasts from Japan. A year ago short-wave broadcasts from Tokyo were intercepted but rarely by listeners here in America. But now, several of the Tokyo stations are heard more regularly. In fact, special broadcasts are being sent out for listeners in America.

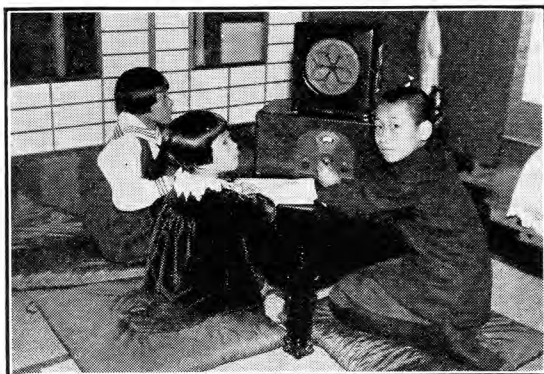


Photo Courtesy Radio News

Young Nippon listens-in. These little Japanese are children of Rear Admiral Yamamoto. They are listening to their father's voice as he broadcasts by short-wave from London.

And the programs from Tokyo are like nothing you ever heard before! Many a Philco owner, under favorable conditions, finds a particular delight in listening to quaint Japanese music.

## INDIA

Location	Station	Freq.	Time (Eastern Standard)
Bombay	VUY-VUB	9.57	Wed. & Sat. 11 A.M. to 12:30 P.M.
Calcutta	VUC	6.11	Daily 9:30 A.M. to Noon, Sat. 11:45 P.M. to 3 A.M.

India, unfortunately, is one of the sections of the world from which short-wave entertainment cannot be obtained with any degree of regularity. For some unknown reason, the English have not given their Indian broadcasting stations anywhere near the power of those in England or Australia. The result is that reception of either the Bombay or the Calcutta stations is a real event in the life of any short-wave fan.

## SIAM and INDO-CHINA

Location	Station	Freq.	Time (Eastern Standard)
Bangkok	HSP	17.75	SIAM 4:30 to 6:30 A.M. Irregular
Saigon	FZS	11.99	FRENCH INDO-CHINA Phones Paris mornings
Penang	ZHJ	6.08	STRAITS SETTLEMENTS Daily 6:40 to 8:40 A.M.
Kuala Lumpur	ZGE	6.13	MALAY STATES Sun., Tues., Fri. 6:40 to 8:40 P.M.
Singapore	ZHI	6.01	Mon., Wed., Thurs. 5:40 to 8:10 A.M. Sat. 10:40 P.M. to 1:10 A.M.

Siam is another of the Asiatic countries from which reception is uncertain. However, the station at Bangkok has been logged by more than one persevering Philco owner. And the peculiar type of Oriental entertainment to which they have been treated, has more than amply repaid them for their early morning exploration of the dial. Saigon, in French Indo-China, has been heard a little more frequently, for the French use this station to communicate directly with Paris.

## OTHER COUNTRIES

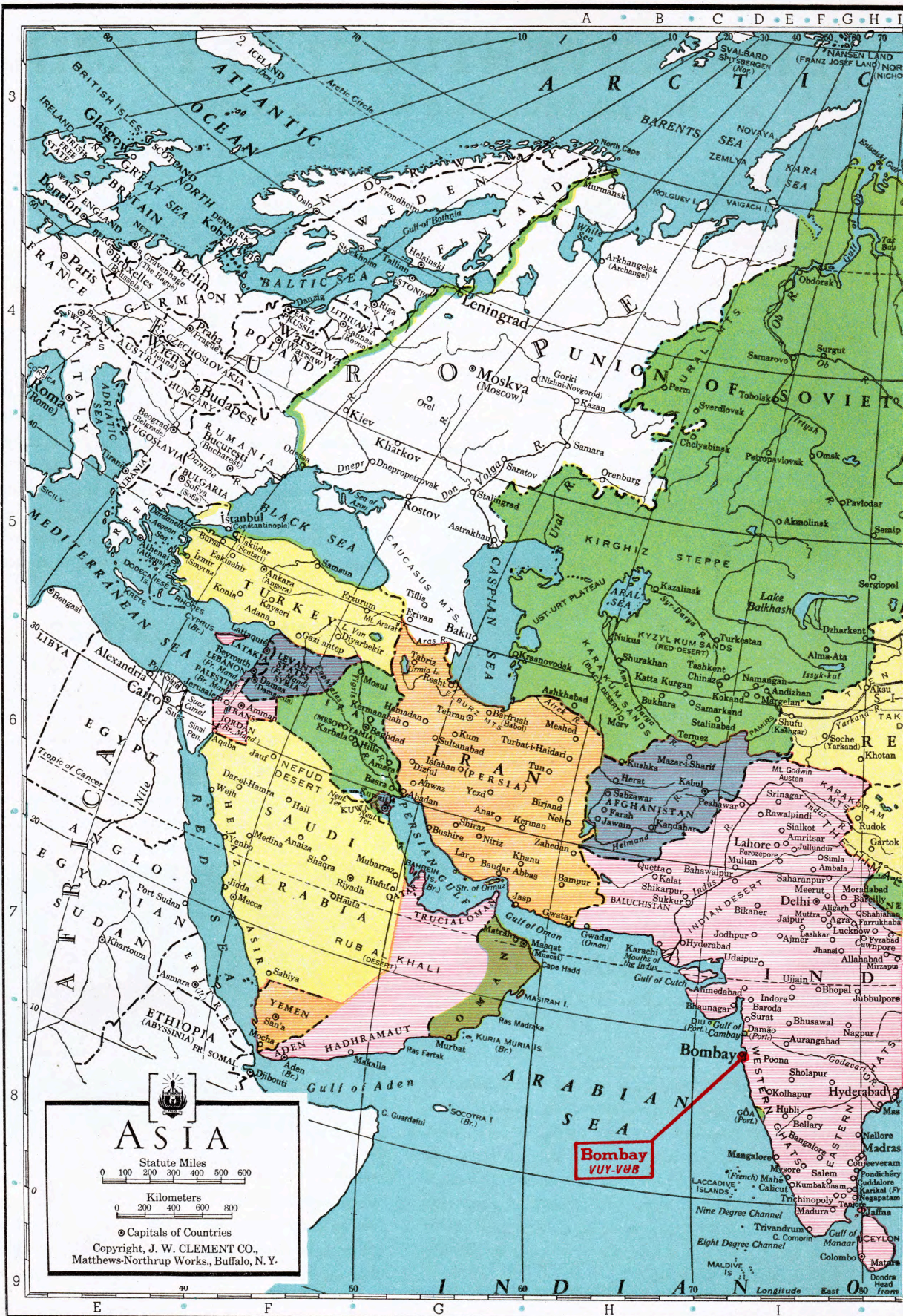
Location	Station	Freq.	Time (Eastern Standard)
Shanghai	XGW	10.42	CHINA Tests near 6:00 A.M.
Hongkong	ZCK	8.75	Daily 11:30 P.M. to 1:15 A.M. Mon. & Thurs. 3 to 7 A.M.
Macau	CQN	6.02	Mon. & Fri. 3 to 5 A.M.
Khabarovsk	RV15	4.25	SIBERIA 1 to 9 A.M.

The Orient is full of exciting adventure for those who have the true spirit of exploration within them—for those who like to travel unbeaten



Comrade Ikramov, lute player, who is attached to the Tashkent Radio Centre, in Tadzhikistan, Central Asia. Many unusual broadcasts come from stations in the U. S. S. R.

aerial highways that lead to Siberia, China, the Malay States and other far-off lands. The average listener, however, should not expect to hear these stations because of the many factors involved.



**Bombay**  
VUY-VUB



**Khabarovsk**  
RV15

**Nazaki**  
JVH-JVM-JVN

**Shanghai**  
XGW

**Hong Kong**  
ZCK

**Macau**  
CQN

**Saigon**  
FZS

**Singapore**  
ZHI

**Penang**  
ZHU

**Kuala Lumpur**  
ZGE

## HUNGARY

Location	Station	Freq.	Time (Eastern Standard)
Budapest	HAS3	15.37	Sundays 9 to 10 A.M.
Budapest	HAT4	9.12	Sundays 6 to 7 P.M.

Until only recently, Hungary could not be heard on the short-waves. Now, however, it is on the air with a regular broadcasting schedule. While not received here in America as regularly or as strongly as other European stations, excellent music



Almost every conceivable type of music is sent out by the short-wave stations of the world. For instance, here is a group of Blaa Mountain pipers broadcasting through the Vienna station.

is occasionally heard from the two stations HAS-3 and HAT-4. Hungary has become musically famous through Liszt's Hungarian Rhapsodies and through countless Hungarian dances by other composers. And this is in large part the type of music one may hear from Budapest—ranging all the way from somber symphonies to joyous, lilting gypsy music.

## OTHER COUNTRIES

Location	Station	Freq.	Time (Eastern Standard)
CZECHOSLOVAKIA			
Prague	OKI	21.02	Schedule Indefinite
AUSTRIA			
Vienna	OER2	6.07	1 to 6 & 7 to 10 P.M.
ROUMANIA			
Bucharest	YOI	13.94	Schedule Indefinite
POLAND			
Poznan	SRI	9.57	Schedule Indefinite

The stations listed above are those which, because of insufficient power or irregular broadcasting schedules, are not heard regularly here in America. Don't expect to hear these stations, therefore, every time they are supposed to be on the air. However, when atmospheric conditions are extremely favorable, you may suddenly find one or more of them coming in.

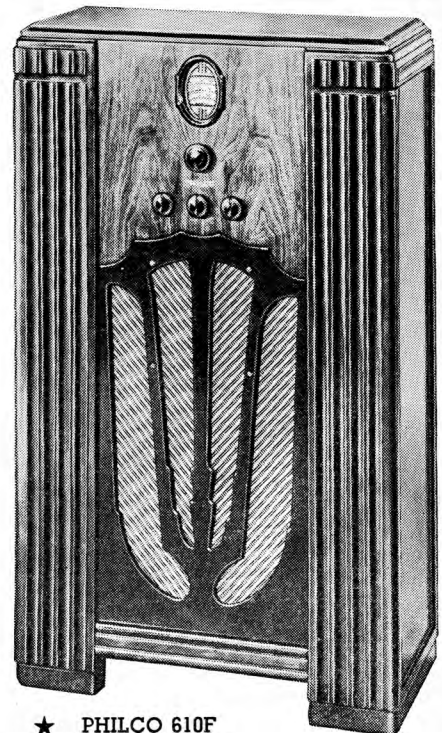
# First Choice!

New 1936

# PHILCO

You must see and hear the brilliant new 1936 Philcos to fully appreciate their remarkable tone, performance, beauty and value! Then you will understand why Philco is the "World's Fastest Selling Radio" — "first choice" of the nation!

Come in — see this Philco 610F today! It's a full-sized floor type model that, properly installed with a Philco All-wave Aerial, gives thrilling American and Foreign reception — at an amazingly low price! Latest features — beautiful satin-finish Walnut cabinet.



★ PHILCO 610F

**EASY TERMS**  
**LIBERAL TRADE-IN ALLOWANCE**

# EXPLORE AFRICA BY RADIO!

There's adventure in reception from the Dark Continent

## MOROCCO

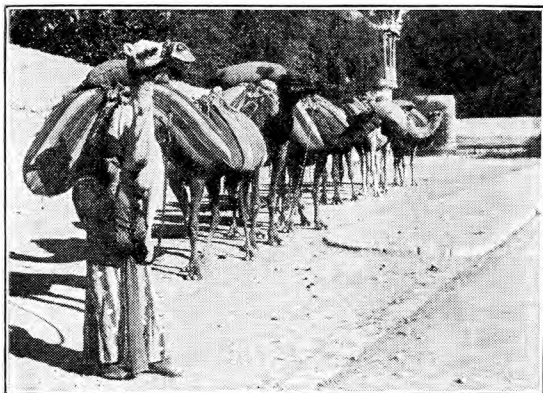
Location	Station	Freq.	Time (Eastern Standard)
Rabat	RABAT	12.83	Sundays 7:30 to 9 A.M.
Rabat	CNR	8.05	Sundays 2:30 to 5 P.M.

When you tune for African stations, you stand upon the threshold of the great unknown. For African stations have considerably lower power than most of the other stations you'll hear. Consequently, you'll need a plentiful supply of luck as well as a powerful receiver to log this elusive continent. Take Morocco for example. Some time ago this station was heard almost weekly but recently it has been received but rarely. The stations at Rabat are owned by the French government and send programs to France in return for programs from the stations at Paris. If you hear "Radio-Maroc," be prepared for anything from scintillating French dance music to exciting desert songs broadcast by native musicians.

## EGYPT

Location	Station	Freq.	Time (Eastern Standard)
Cairo	SUZ	13.83	Schedule Indefinite
Cairo	SUV	10.05	Schedule Indefinite

Egypt is one part of Africa which is heard from more often than other sections. Although the short-wave stations in this country are primarily phone stations used for radiophone communication between Cairo and the rest of the world, occasionally you may hear unusual broadcasts. Both SUV and SUZ will verify reception reports if you enclose an International Reply Coupon with your report. Thus these stations are tuned for regularly by the fan who would add Africa to his list of continents received.



"Camel bells from Cairo!" Many a short-wave listener has heard them from just such a camel train as this. For this unique broadcast was just one that has been heard from the stations at Cairo.

## BELGIAN CONGO

Location	Station	Freq.	Time (Eastern Standard)
Leopoldville	OPM	10.14	9 to 11 A.M.; 3 to 6 P.M.

What thrilling stories the Belgian Congo has given the world! It was here, in the very heart of "darkest Africa," that one of the greatest adventures of all time was staged—Stanley's search for Livingstone. The world waited for years after Stanley's entrance into the jungle before it knew the results of that expedition. Now, however, the Belgian government has a fairly powerful short-wave station at Leopoldville which maintains a regular schedule with ORK, Brussels.

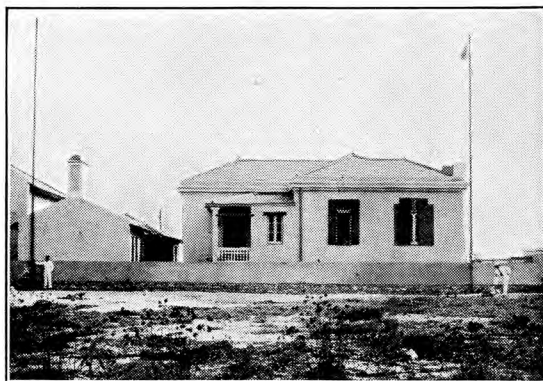


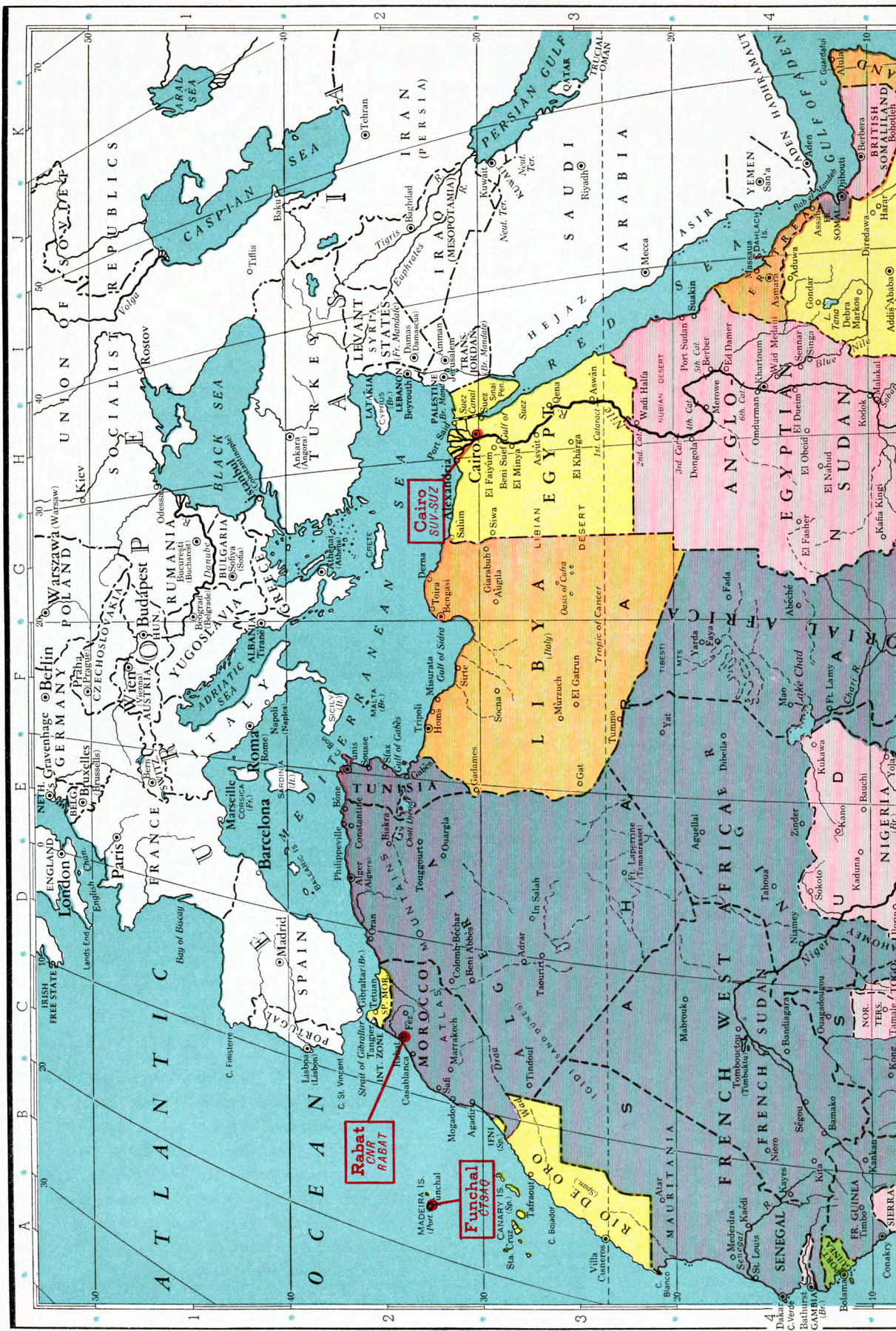
Photo Courtesy Radio News

This little station, located at Lobito, Angola, in Portuguese West Africa, is the object of diligent tuning by avid short-wave fans all over the world. Call letters are CR6AA.

## OTHER AFRICAN STATIONS

Location	Station	Freq.	Time (Eastern Standard)
MADEIRA ISLANDS			
Funchal	CT3AQ	9.37	Schedule Indefinite
UNION OF SOUTH AFRICA			
Johannesburg	ZTJ	6.09	3:30 A.M. to 7 A.M. & 9 A.M. to 4 P.M.
ANGOLA			
Lobito	CR6AA	7.17	Wed. & Sat. 2:30 to 4:30 A.M.
KENYA COLONY			
Nairobi	VQ7LO	6.12	5:45 to 6:15 A.M. & 11 A.M. to 2 P.M.

You'll have to wait until reception conditions are extremely favorable to "catch" these stations. Nairobi, Johannesburg and Lobito operate on regular schedules, but they are not large transmitters and, as a consequence, are heard only by the avid fan who is willing to tune for them regularly, usually in the small hours of the morning. If you are successful in picking them up, you'll experience a thrill few others have enjoyed.



**Rabat**  
CMR  
RABAT

**Funchal**  
67940





**Nairobi**  
10710

**Johannesburg**  
27J

**Leopoldville**  
OPM

**Lobito**  
CR6AA

AFRICA

Statute Miles

Kilometers

● Capitals of Countries

Copyright, J. W. CLEMENT CO.,  
Matthews-Northrup Works., Buffalo, N. Y.

# LISTEN TO ENTERTAINMENT

Australia and the islands of the South Seas

## AUSTRALIA

Location	Station	Freq.	Time (Eastern Standard)
Sydney	VK2ME	9.59	Sun. Midnight to 2 A.M., 5 to 9 A.M.
Melbourne	VK3LR	9.58	Daily 3:15 to 7:30 A.M.
Melbourne	VK3ME	9.51	Wed., Thurs., Fri., Sat. 5 to 7 A.M.

No matter how many times you might receive the delightful broadcasts from Australia, you'll always feel excited at hearing voices and music from the other side of the globe! And that means many a thrill, because the Australian stations have the happy faculty of reaching America with surprising regularity. In fact, many experienced short-wave fans look upon the two principal stations, VK2ME and VK3ME, as "locals" because of the frequency with which their programs are heard. Experience counts in getting these stations.

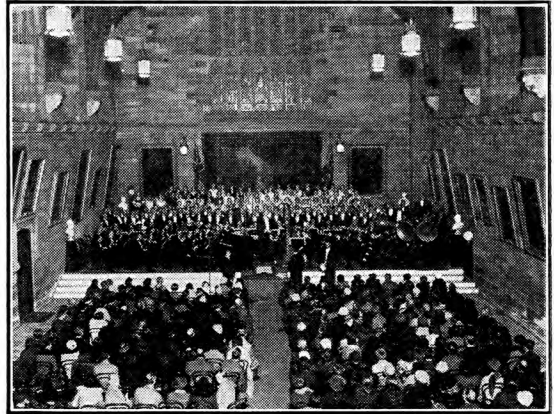
Stirring symphonies, light opera selections, news



Captain Atkins, whose band is broadcast from VK2ME, Sydney, Australia.

dispatches, dance music, and variety programs are broadcast. And, of course, announcements are in the broadest of British accents. For, thousands of miles from the mother country though it is, Australia is typically British in speech, music, and customs. Unfortunately, however, to hear the Australian stations at their best, you'll have to get up early, for their broadcasts are strongest between

5 and 8 A. M., Eastern Standard Time.



The Sydney Symphony Orchestra which plays occasional concerts over the Australian short-wave station, VK2ME.

## JAVA

Location	Station	Freq.	Time (Eastern Standard)
Bandoeng	YDA	6.12	5 to 11 A.M. Irregular
Bandoeng	PMY	5.15	6 A.M. to Noon

Next to Australia, Java is probably the most productive of short-wave entertainment from the other side of the world. Java is but a small island compared to neighbors like Sumatra and Borneo. Yet it is said to have more short-wave stations for its size than any other country. One or two of these stations provide fairly consistent broadcasting.

Java belongs to the Netherlands. Consequently the language is Dutch. But the entertainment which comes from Java may be anything from the latest dance tune to strange, ceremonial music played by Javanese natives. Tune your Philco to Java for some of the greatest thrills short-wave radio has to offer.

## FIJI ISLANDS

Location	Station	Freq.	Time (Eastern Standard)
Suva	VP1A	13.07	12:30 to 1:30 A.M. ex. Sat. & Sun.

Here is another fascinating part of the world! The Fiji Islands have only recently been "discovered" by the short-wave listener, for only recently have they had a short-wave broadcasting station with sufficient power to reach American listeners. Every night finds hundreds of short-wave fans turning their dials toward Suva in the South Seas in search of radio adventure and romance. Why not join them? You'll have lots of fun.

REPLACE with

# PHILCO

## High-Efficiency TUBES

and improve your radio's performance

### New LOW Prices!

# FROM "WAY DOWN UNDER"!

broadcast fascinating, thrilling programs!

## OTHER SOUTH PACIFIC SHORT-WAVE STATIONS

Location	Station	Freq.	Time (Eastern Standard)
		NEW ZEALAND	
Wellington	ZLT	11.05	1 to 7 A.M.
		PHILIPPINE ISLANDS	
Manila	KAY	14.98	5 to 7 A.M. & 7 to 8 P.M.
		HAWAII	
Kauhuku	KKH	7.52	Evenings Irregular

Although New Zealand possesses several short-wave broadcasting stations, this country is not one upon which you'll depend for everyday entertainment. It is one of those which you can hear only when conditions are extremely favorable.

The Philippines have several high-powered stations, the most frequently heard of which is KAY at Manila. Hawaii also is heard through any of several stations at Kauhuku. But they are phone stations used primarily for communication work between these points and the United States. Occasionally, however, they may be picked up relaying special broadcasts to or from America.

## AERIAL DESIGN NOW HIGHLY IMPORTANT

For reception of stations on the other side of the world, the importance of having a Philco All-wave Aerial cannot be emphasized too strongly. Signals from stations like Melbourne, Bandoeng and Suva are extremely faint after traveling thousands of miles and it is absolutely essential that you have not only a powerful receiver but an aerial system that is especially designed to pull in these faint signals.

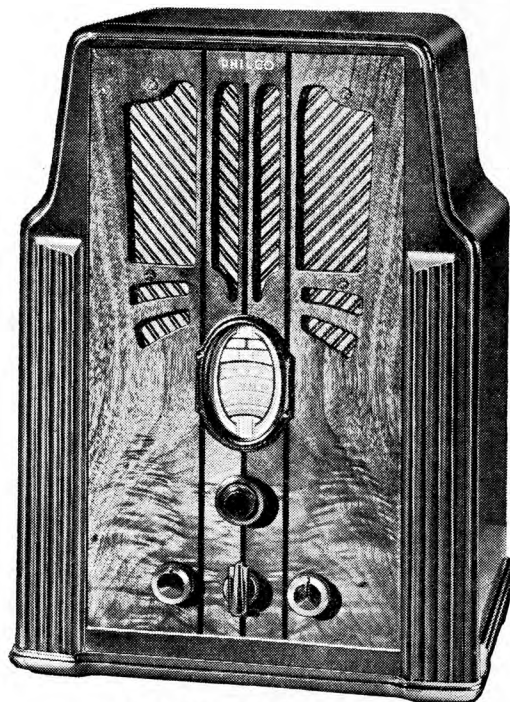
The Philco All-wave Aerial is specially engineered for this purpose. And in addition, it reduces to a minimum man-made static and local electrical interference. This aerial, then, does two things: it pulls in weak stations from really tremendous distances and it cuts down the noise so that you can identify these stations with greater ease and get more enjoyment from your armchair travels.

## Travel Abroad

with this New 1936

# PHILCO

You'll be delighted with the unusually clear tone, power and foreign reception of this latest Baby Grand Philco, properly installed with a Philco All-wave Aerial! You'll admire the beauty and grace of its newly designed cabinet — and you'll be amazed at its remarkably low price! Only Philco gives you every worth while feature in radio!

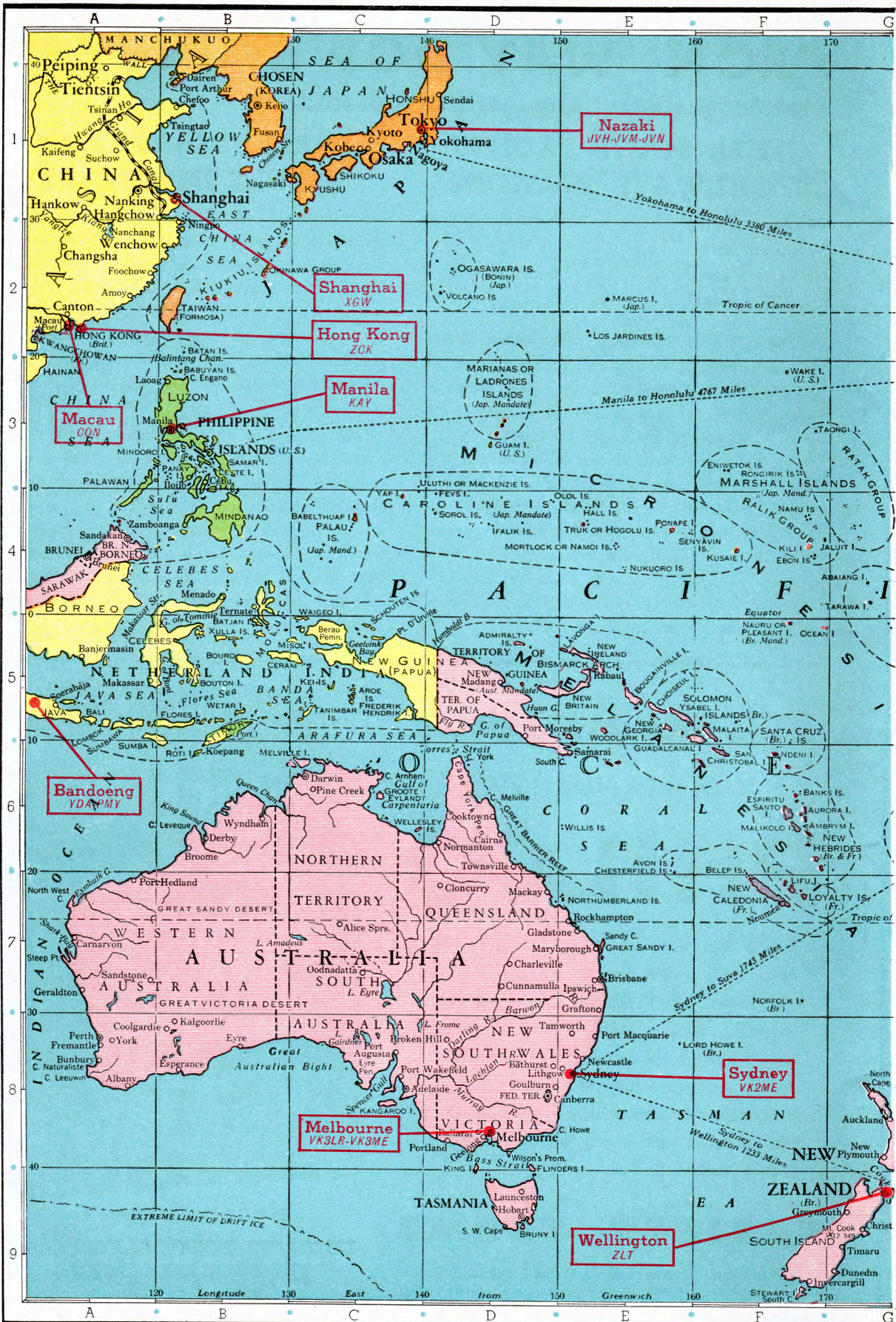


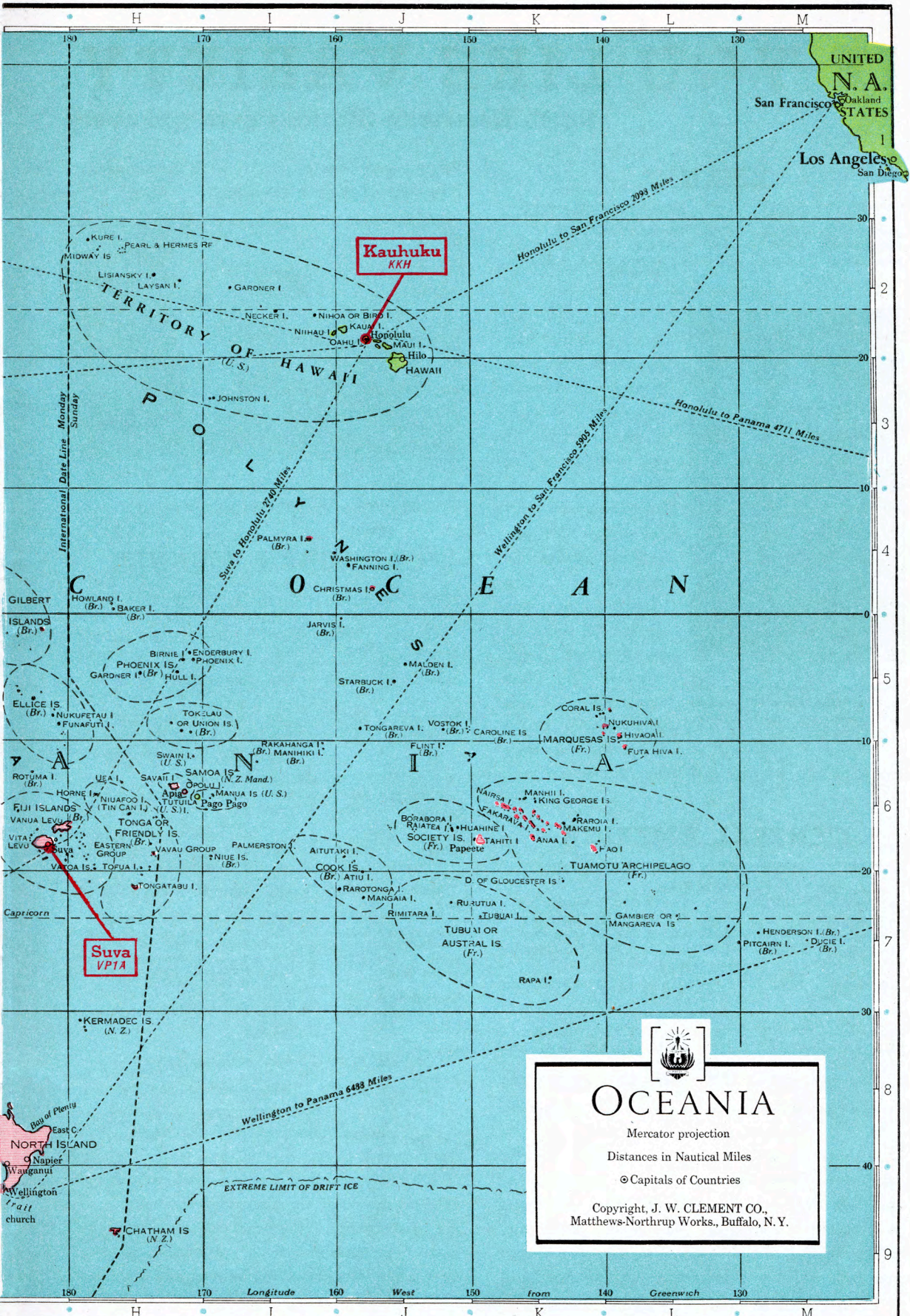
PHILCO 630 BABY GRAND


LISTEN TO BOAKE CARTER OVER  
KEY COLUMBIA STATIONS

## EASIEST TERMS

Liberal Trade-in Allowance







# OCEANIA

Mercator projection

Distances in Nautical Miles

☉ Capitals of Countries

Copyright, J. W. CLEMENT CO.,  
Mathews-Northrup Works, Buffalo, N. Y.

# IF YOU LIKE VARIETY,

## North American Stations give you every

### MEXICO

Location	Station	Freq.	Time (Eastern Standard)
Mexico City	XECR	7.38	Sundays 6 to 7 P.M.
Mexico City	XEBT	6.00	6 P.M. to 3 A.M. Irregular
Mexico City	XECW	5.98	4 to 4:30 P.M. & 10:30 P.M. to Midnight



Photo Courtesy Radio News

Pedro el Gaucho—Peter the Tango Singer. He is featured on the short-wave programs from XEBT, Mexico City.

There's a happy, carefree quality about the Mexican short-wave broadcasts that intrigues all who hear them. If you love fascinating rhythm and beautiful melody, don't fail to make the Mexican stations a frequent visit. The Mexicans have given the world some of the loveliest songs ever written. How wonderful to be able to tune your Philco direct to the very heart of old Mexico and listen almost at will.

### CENTRAL AMERICA

Location	Station	Freq.	Time (Eastern Standard)
COSTA RICA			
San Jose	TIEP	6.71	5 to 10 P.M. Irregular
San Jose	TIPG	6.55	8:30 to 11 P.M. Irregular
San Jose	TIRCC	6.55	6 to 11:30 P.M. Irregular
San Jose	TIGPH	5.82	6:15 to 11 P.M. Irregular
GUATEMALA			
Guatemala City	TGX	5.89	11 A.M. to 2:30 P.M. & 6 to 10 P.M.
NICARAGUA			
Managua	YN1GG	6.45	7 to 10:30 P.M. Irregular
Managua	YNLF	5.96	6 P.M. to 1 A.M. Irregular
PANAMA			
Panama City	HP5J	9.59	11:45 A.M. to 1 P.M. & 7:30 to 10 P.M.
Panama City	HP5B	6.03	Noon to 1 P.M. & 8 to 10:30 P.M.

Starting from Mexico, you can make a radio tour right down through Central America, for there are short-wave stations in almost every one of these little countries. The music you'll hear will be Spanish in character, of course, with tangos and folk songs predominating. Costa Rica and

Panama broadcast regularly, with Guatemala and Nicaragua coming in less often.

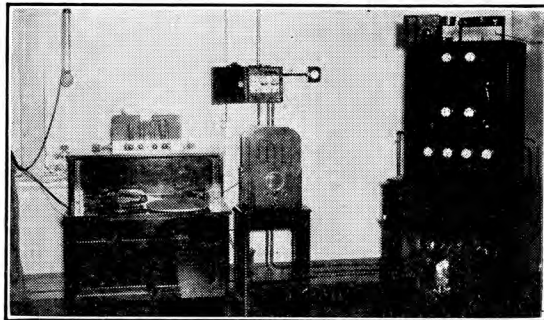


Photo Courtesy Radio News

"La Voz del Tropico"—the Voice of the Tropics. In other words, Station TIEP at San Jose, Costa Rica.

### CARIBBEAN ISLANDS

Location	Station	Freq.	Time (Eastern Standard)
CUBA			
Sancti Spiritus	CO9WR	11.80	4 to 6 & 9 to 11 P.M.
Habana	COH	9.43	10 A.M. to Noon, 4 to 6:30 P.M. & 8 to 10 P.M.
Santiago	CO9GC	6.15	8:30 to 10 A.M., Noon to 1:30 P.M., 3:30 to 4:30 & 10 to 11 P.M.
Habana	COCD	6.13	10 P.M. to 12:30 A.M.
Habana	COC	6.01	9:30 A.M. to 12:30 P.M., 4 to 7 & 8 to 10 P.M. Sat., 11:30 P.M.
DOMINICAN REPUBLIC			
La Romana	HI3C	6.90	12:30 to 2 & 7:30 to 9:30 P.M.
San Pedro de Macoris	HIH	6.81	Daily 12:10 to 1:40 P.M. & 6:40 to 7:40 P.M., Sun. 3 to 4 A.M. & 4 to 5 P.M.
Santo Domingo	HI4D	6.61	11:55 A.M. to 1:40 P.M. & 4:40 to 7:40 P.M.
Santo Domingo	HIL	6.53	Saturdays 8 to 10 P.M.
Santo Domingo	HIZ	6.31	7 to 10 P.M. Irregular
Santiago de Caballeros	HI1A	6.19	11:40 A.M. to 1:40 P.M. & 7:40 to 8:40 P.M.
Santo Domingo	HIX	5.98	Tues. & Fri. 8:10 to 10:10 P.M. Sun. 8:40 to 10:40 A.M. & 2:40 to 4:40 P.M.
San Pedro de Macoris	HI1J	5.78	7 to 9:30 P.M. Irregular
HAITI			
Port-au-Prince	HH2T	11.57	Schedule Indefinite
Port-au-Prince	HH2S	6.07	Schedule Indefinite

Here's a fascinating part of the world for the short-wave listener. As you tune to the multitude of stations you'll find here, you can easily imagine yourself as one of the early explorers upon a voyage of discovery. What exciting adventure you'll have! For these islands are full of tales of the old days when swashbuckling pirates and buccaneers

# YOU'LL FIND IT HERE

thing from rhumbas to network programs

plundered Spanish galleons filled with gold and silver from the mines in Mexico. But the old order has changed, and now a dozen or more short-wave stations nightly offer delightful entertainment to the Western Hemisphere.

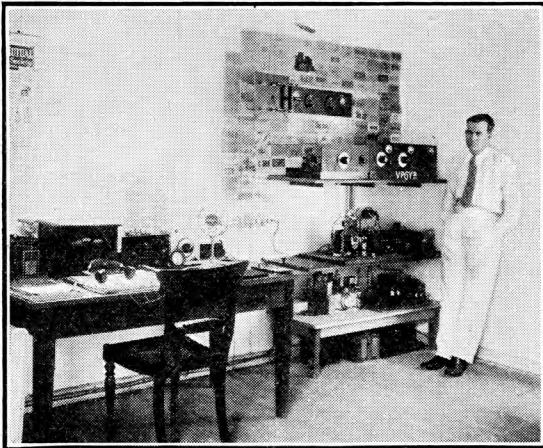


Photo Courtesy Radio News

Station VP6YP at Bridgetown, Barbados, British West Indies. Tune for this station on the 14 megacycle band.

However, this broadcasting of network programs by short-wave stations has one great advantage to the owner of an American and Foreign Broadcast Philco. Very often when conditions on the standard broadcast band are so unfavorable as to prevent satisfactory reception of a favorite network program, you can drop down to one of the Canadian or United States short-wave stations and hear the same program perfectly. For reception conditions are often much better on the short-waves than on the broadcast band. Remember this the next time static prevents enjoyable reception of network programs.

## RADIO INSTITUTE AID PROGRAM LISTENERS

The Radio Institute of the Audible Arts was founded by Philco Radio & Television Corporation as a public service to the American people, to act as a clearing house of information on the broad phases of radio as an instrument of entertainment and culture and to stimulate public recognition and appreciation of the best in radio. Accordingly, the Institute has prepared various publications which it is distributing to members of organizations and individuals who are interested in the development of the audible arts through radio.

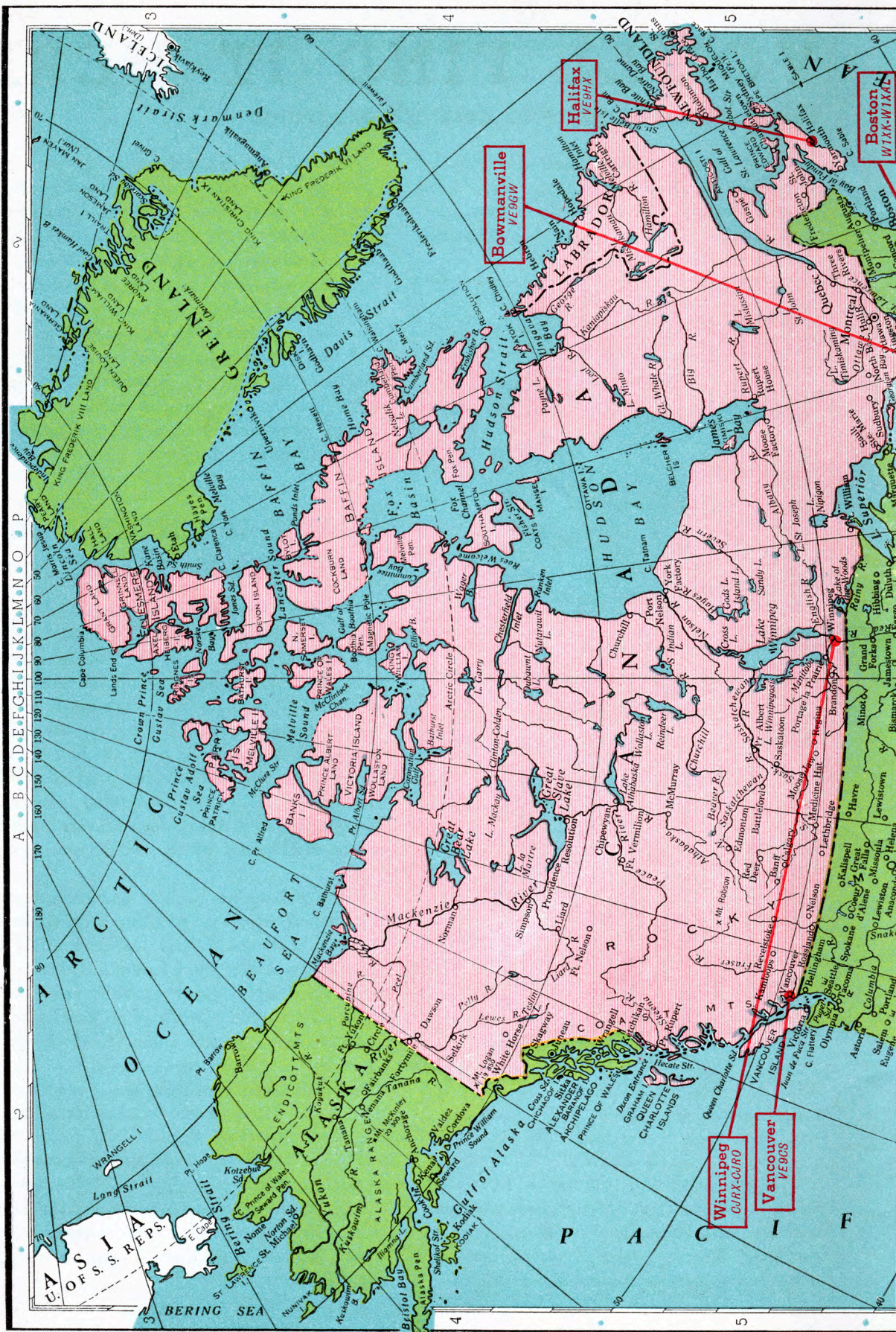
These publications include announcements of forthcoming important programs with comments on their contents, manuals that will aid in the appreciation of the types of programs that engage your special interest, special articles and talks on radio subjects, and a brochure on how to utilize radio in the teaching of music. If you would be interested in receiving such material, you may obtain it either from your Philco dealer or by writing The Radio Institute of the Audible Arts, 80 Broadway, New York City.

Periodically, Philco publishes in advertisements in the Saturday Evening Post and Collier's, a partial list of the programs recommended by the Institute. Many listeners use these advertisements as guides in their search for the more outstanding programs on the air.

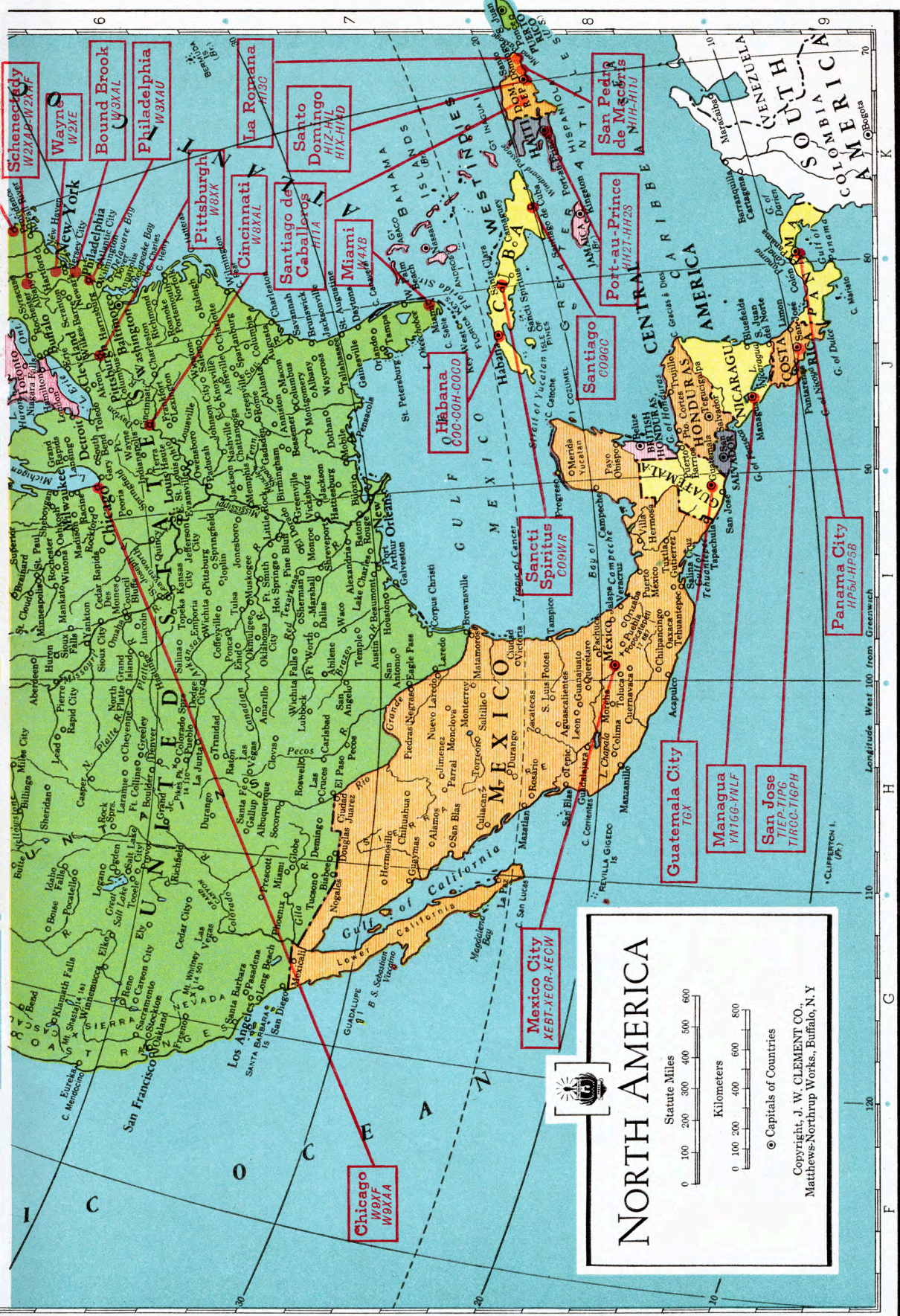
## UNITED STATES and CANADA


Location	Station	Freq.	Time (Eastern Standard)
UNITED STATES			
Pittsburgh	W8XK	21.54	7 to 9 A.M.
Bound Brook	W3XAL	17.78	Daily 8 to 9 A.M., Tues., Thurs., Fri., 2 to 3 P.M.
Schenectady	W2XAD	15.34	Sun. 10:30 A.M. to 4 P.M., Daily 2 to 3 P.M.
Wayne	W2XE	15.27	10 A.M. to 5 P.M.
Pittsburgh	W8XK	15.21	10 A.M. to 7 P.M.
Pittsburgh	W8XK	11.87	5 to 9 P.M.
Boston	W1XAL	11.79	Schedule Indefinite
Philadelphia	W3XAU	9.59	Noon to 6:45 P.M.
Boston	W1XK	9.57	6 A.M. to Midnight
Schenectady	W2XAF	9.53	Daily 5:30 to 11 P.M.
Pittsburgh	W8XK	6.14	9 P.M. to 1 A.M.
Wayne	W2XE	6.12	5 to 10 P.M.
Chicago	W9XF	6.10	8 to 9 P.M. & Midnight to 1 A.M.
Bound Brook	W3XAL	6.10	Mon., Wed., Sat., 4 to 5 P.M.
Chicago	W9XAA	6.08	Schedule Indefinite
Cincinnati	W8XAL	6.06	5:30 A.M. to 7 P.M. & 10 P.M. to 1 A.M.
Philadelphia	W3XAU	6.06	7 to 10 P.M.
Miami	W4XB	6.04	11:30 A.M. to 2 P.M. & 8 P.M. to Midnight
CANADA			
Winnipeg	CJRX	11.70	7 to 10 and 10:30 to 11 P.M.
Winnipeg	CJRO	6.15	7 to 10 and 10:30 to 11 P.M.
Halifax	VE9HX	6.11	8:30 to 11:30 A.M. & 5 to 10 P.M.
Bowmanville	VE9GW	6.09	Thurs., Fri., Sat. 7 A.M. to 4 P.M. Sun. Noon to 8 P.M.
Vancouver	VE9CS	6.07	Daily 6 to 7 P.M. Sun. 1:45 P.M. to 1 A.M.

The great majority of the stations listed above are short-wave relay stations operated in conjunction with network stations on the regular broadcast band. Their programs are for the most part identical with those of the long-wave stations.









# NORTH AMERICA

Statute Miles

0 100 200 300 400 500 600

Kilometers

0 100 200 400 600 800

© Capitals of Countries  
 Copyright, J. W. CLEMENT CO.  
 Matthews-Northrup Works., Buffalo, N.Y.

**Chicago**  
WBXV  
WBXAA

**Mexico City**  
XEHT-XEOR-XEOW

**Guatemala City**  
TGX

**Managua**  
YN1GG-YALF

**San Jose**  
TIEP-TIPC  
TIRCO-TIGPH

**Panama City**  
HP5L-HP6B

**Sancti Spiritus**  
CO9WR

**Habana**  
COC-COH-COOD

**Port-au-Prince**  
HH2T-HH2S

**San Pedro de Macoris**  
A-MH-HTU

**Miami**  
W4XB

**Santiago de los Caballeros**  
HTTA

**Cincinnati**  
WBXAL

**Pittsburgh**  
WBXK

**Philadelphia**  
W3XAU

**Bound Brook**  
W3XAL

**Wayne**  
W2ME

**Schenectady**  
W2XAP-W2XF

# North American Long-Wave Stations

With this log, you can identify any station almost instantly by its dial settings, its power and the network with which it is affiliated. It also facilitates your tuning to any city you desire inasmuch as stations are grouped geographically, according to the part of the country in which they are located.

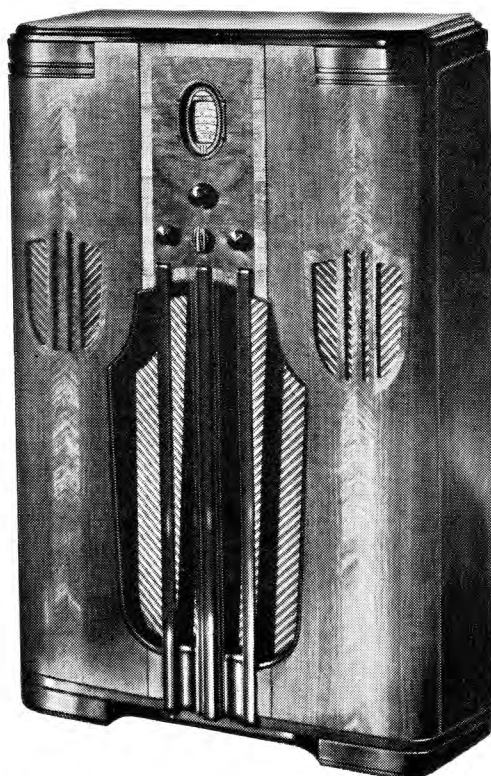
The numbers in large type in the table below correspond to the dial settings on your Philco radio. Thus, this list is an accurate guide to you in your broadcast journeys. The small zeros after these figures convert these dial settings into kilocycles, the form in which stations are most often listed by newspapers.

Revision	50	75	100	150	200	250	300	350	400	450	500	550	600	650	700	750	800	850	900	950	1000	1500	2000	2500	3000	3500	4000	4500	5000	5500	6000	
WESTERN	WESTERN	WESTERN	MIDDLE WESTERN	MIDDLE WESTERN	MIDDLE WESTERN	MIDDLE WESTERN	MIDDLE WESTERN	MIDDLE WESTERN	MIDDLE WESTERN	MIDDLE WESTERN	MIDDLE WESTERN	MIDDLE WESTERN	MIDDLE WESTERN	MIDDLE WESTERN	MIDDLE WESTERN	MIDDLE WESTERN	MIDDLE WESTERN	MIDDLE WESTERN	MIDDLE WESTERN	MIDDLE WESTERN	MIDDLE WESTERN	MIDDLE WESTERN	MIDDLE WESTERN	MIDDLE WESTERN	MIDDLE WESTERN	MIDDLE WESTERN	MIDDLE WESTERN	MIDDLE WESTERN	MIDDLE WESTERN	MIDDLE WESTERN	MIDDLE WESTERN	MIDDLE WESTERN
POWER	POWER	POWER	POWER	POWER	POWER	POWER	POWER	POWER	POWER	POWER	POWER	POWER	POWER	POWER	POWER	POWER	POWER	POWER	POWER	POWER	POWER	POWER	POWER	POWER	POWER	POWER	POWER	POWER	POWER	POWER	POWER	POWER
Dial No.	Dial No.	Dial No.	Dial No.	Dial No.	Dial No.	Dial No.	Dial No.	Dial No.	Dial No.	Dial No.	Dial No.	Dial No.	Dial No.	Dial No.	Dial No.	Dial No.	Dial No.	Dial No.	Dial No.	Dial No.	Dial No.	Dial No.	Dial No.	Dial No.	Dial No.	Dial No.	Dial No.	Dial No.	Dial No.	Dial No.	Dial No.	Dial No.
50	75	100	150	200	250	300	350	400	450	500	550	600	650	700	750	800	850	900	950	1000	1500	2000	2500	3000	3500	4000	4500	5000	5500	6000		
KWJZ Portland, Ore.	KNX Los Angeles, Cal.	WJAG Norfolk, Nebr.	KJBS San Francisco, Cal.	CRV Vancouver, B. C.	AGDN Sturgeon, Cal.	KFIO-KRRD Los Angeles, Cal.	KSL Salt Lake City, Utah	XED Guadalajara, Mex.	WGOY Minneapolis, Minn.	WAOI San Antonio, Tex.	KWV-KVOS-FXFI-KOOS	KGY-KFJI-KASA-KFUR	KWV-KVOS-FXFI-KOOS	KWV-KVOS-FXFI-KOOS	KWV-KVOS-FXFI-KOOS	KWV-KVOS-FXFI-KOOS	KWV-KVOS-FXFI-KOOS	KWV-KVOS-FXFI-KOOS	KWV-KVOS-FXFI-KOOS	KWV-KVOS-FXFI-KOOS	KWV-KVOS-FXFI-KOOS	KWV-KVOS-FXFI-KOOS	KWV-KVOS-FXFI-KOOS	KWV-KVOS-FXFI-KOOS	KWV-KVOS-FXFI-KOOS	KWV-KVOS-FXFI-KOOS	KWV-KVOS-FXFI-KOOS	KWV-KVOS-FXFI-KOOS	KWV-KVOS-FXFI-KOOS	KWV-KVOS-FXFI-KOOS	KWV-KVOS-FXFI-KOOS	KWV-KVOS-FXFI-KOOS

*Enjoy* **PROGRAMS**  
**from HOME and ABROAD**  
**as never before!**

The New 1936  
**PHILCO**

By all means see and hear the new 1936 Philcos — radio's finest musical instruments. Every worth while feature in radio, giving you thrilling American and Foreign reception. You will be amazed when you hear Philco's glorious tone — when you see the exquisite new cabinets — when you compare Philco's exceptional values!



**PHILCO 116X**

This new Philco is a true High-Fidelity instrument with vastly extended musical range bringing you the overtones which identify and distinguish the many and varied musical instruments . . . NEW and exclusive Acoustic Clarifiers automatically prevent unpleasant barrel-like boom . . . ALL the clarity of tone produced by the Acoustic Clarifiers and all the extended musical range of Philco High-Fidelity are preserved and projected up to ear level by the large area and slope of the famous Philco Inclined Sounding Board. In addition, every other advance of radio

science and invention . . . Shadow Tuning . . . Two-speed Station Selector . . . Program Control . . . Automatic Volume Control. Receives every broadcast service in the air . . . American Stations . . . both daytime and night-time Foreign Stations . . . Police Calls . . . Amateur, Ship and Aircraft Stations . . . even the new U. S. Government Weather Forecasts.

And its built-in Aerial Selector, used with the Philco All-wave Aerial, automatically maintains maximum power on each wave band . . . In effect, five aerials in one.

Select Your Radio from 43 New 1936 Philcos  
 Liberal Trade-in Allowance — EASY TERMS

# ARCTIC REGIONS



VE9CS..VANCOUVER

JVM..TOKYO

XGW..SHANGHAI

KAY..MAWLA

XEBT...

VK2ME..SYDNEY

# PACIFIC OCEAN