

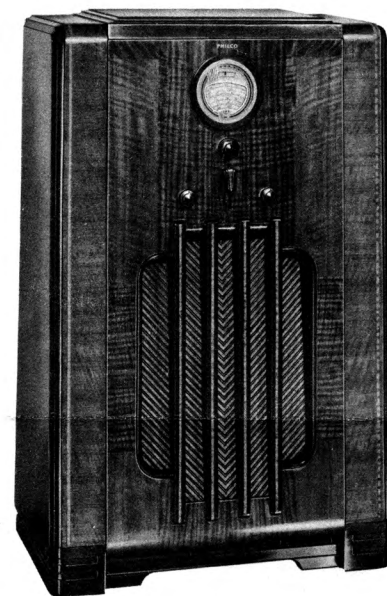
# PHILCO INCLINED SOUNDING BOARD MODELS

All the Philco models illustrated on this page feature the famous Philco Inclined Sounding Board . . . the greatest single advance in scientific sound reproduction. Through its marvels you enjoy a truly lifelike reproduction of speech and music.

**A. The slope directs the high notes (treble) up to your ears, preserving the sparkle and brilliance of the original.**

**B. The large sounding board area faithfully reproduces the low notes (bass), thus preserving the depth and sonority of the original.**

**RESULT: Clear, lifelike reception, as if the artists were present "in person."**



**PHILCO SPREAD-BAND 660X**—American and Foreign . . . 4 Tuning Ranges with Glowing Beam Tuning Range Indicator . . . Super Class A Audio System . . . 9 Philco High-Efficiency Tubes . . . Spread-Band Dial with foreign stations spread 4 times farther apart . . . 20 Tuned Circuits with the *Philco High-Efficiency Aerial* . . . Shadow Tuning . . . Philco Foreign Tuning System.

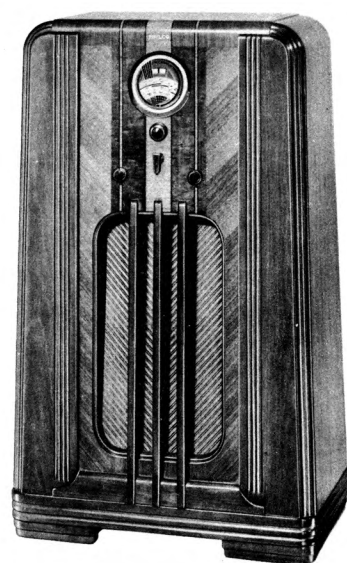
In the same cabinet: **Philco 665X**—American and Foreign . . . similar to 660X with the exception that station separation has been lessened to provide one tuning range for the Ultra-Short-Wave Frequencies between 28 and 42 Megacycles; **Spread-Band 643X** for Battery Operation.

## STONE CONTROL

**PHILCO 675**—Twin Tone Controls  
A. Continuously Variable Treble Control  
B. Three Point Variable Bass Compensation Control

**PHILCOS 670-665-660-650**  
A. Brilliant—for speech  
B. Bright—for normal reception of music  
C. Mellow—first noise-reducing stage  
D. Deep—noise-reducing for distant reception

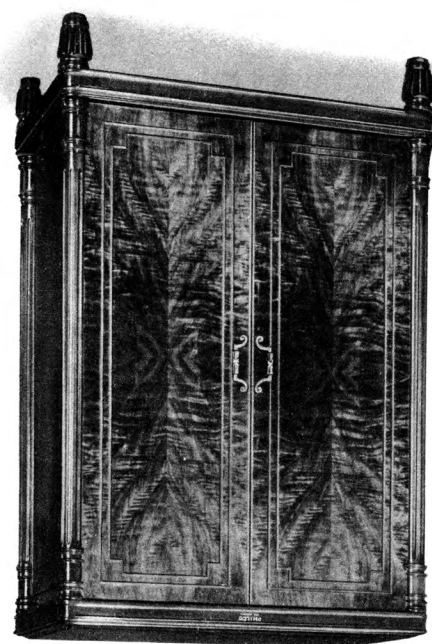
**PHILCOS 640-630**  
A. Brilliant—for speech  
B. Mellow—for music  
C. Deep—noise-reducing for distant reception



**PHILCO 640X**—American and Foreign . . . 3 Tuning Ranges with Glowing Beam Tuning Range Indicator . . . Push-Pull Audio System . . . 7 Philco High-Efficiency Tubes . . . Philco Color Dial with 50% greater separation on foreign stations . . . 17 Tuned Circuits with the *Philco High-Efficiency Aerial* . . . Shadow Tuning . . . Philco Foreign Tuning System.

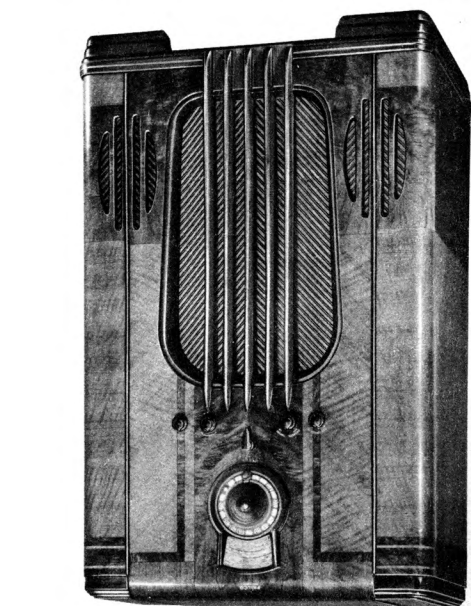
In the same cabinet: **Philco 641X** . . . American and Foreign . . . for 115-volt AC-DC operation.

**PHILCO 690X**—Super High-Fidelity . . . American and Foreign . . . Three Speakers . . . Cathedral High-Fidelity Speaker with two specially designed High-Frequency Speakers . . . Automatic Tuning of favorite stations . . . Magnetic Tuning . . . 5 Tuning Ranges with Glowing Beam Tuning Range Indicator . . . Super High-Fidelity Audio System . . . Music Interpreter . . . Treble-Selectivity Control . . . Acoustic Continuously Variable Bass Control . . . Acoustic Clarifiers . . . 20 Philco High-Efficiency Tubes . . . Spread-Band Dial with foreign short-wave stations spread 6 times farther apart . . . 27 Tuned Circuits with the *Philco High-Efficiency Aerial* . . . Philco Foreign Tuning System.



**PHILCOS 116X AND 690X**  
**TUNING RANGE COVERAGE**  
Five Tuning Ranges cover Standard American Broadcasts . . . Daytime and Night-time Foreign and American Short-Wave Broadcasts . . . State and Municipal Police . . . Aviation . . . Ship and Amateur . . . all that's interesting on the air!  
In the same cabinet: **Standard Philco 116X**—High-Fidelity . . . Similar to above with the exception of Automatic Tuning. Foreign short-wave stations spread 5 times farther apart.

**PHILCO AUTOMATIC TUNING!**  
On the 116X De Luxe, the 690X De Luxe and the 675X De Luxe, Philco introduces Automatic Tuning of favorite American stations. Forget station numbers . . . tune by call letters placed as they are on an automatic telephone dial. Turn the dial once and you hear the station of your choice. Turn with electrical precision. Back of the dial Philco Magnetic Tuning . . . the development which makes Automatic Tuning practical . . . puts you on the exact frequency of the station and holds the receiver there as long as you want to listen!  
The large area and slope of the famous Philco Inclined Sounding Board preserve and project up to ear-level all this extended musical range and clarity of tone . . . while Wide Angle Sound Diffusers spread the most delicate overtones throughout the room.  
Acoustic Clarifiers automatically eliminate unpleasant barrel-like boom. Specially designed High-Fidelity Speakers reproduce high treble and low bass notes without distortion even at auditorium volume.  
The Philco High-Fidelity Audio System, with its vastly extended musical range, gives you the most faithful, lifelike reproduction of speech and music. All voices, all musical instruments reach you with the overtones that identify and distinguish them. Its power output covers the full range from the faintest to the thunderous finale of the greatest symphony orchestra.



**PHILCO 116X DE LUXE**—High-Fidelity . . . Automatic Tuning of favorite stations and Foreign . . . Magnetic Tuning . . . 5 Tuning Ranges with Glowing Beam Tuning Range Indicator . . . Twin Tone Controls . . . Treble-Selectivity Control . . . Bass Control . . . Inclined Sounding Board . . . Acoustic Clarifiers . . . 15 Philco High-Efficiency Tubes . . . Spread-Band Dial with foreign short-wave stations spread 6 times farther apart . . . Cathedral High-Fidelity Speaker . . . 27 Tuned Circuits with the *Philco High-Efficiency Aerial* . . . Philco Foreign Tuning System.

# PHILCO HIGH-FIDELITY RADIOS

Every American and Foreign  
PHILCO has the Foreign Tuning System that tunes the  
PHILCO High-Efficiency Aerial

"Only PHILCO has it!"

The Philco Foreign Tuning System is an integral part of every American and Foreign Philco. Built-in! Automatic! By tuning the aerial as you tune the set . . . the new 1937 Philco Foreign Tuning System more than doubles the number of foreign stations you can get and enjoy.

## PHILCO COLOR DIAL

Foreign stations are named and located on the new Philco Color Dial . . . the visible symbol of the Philco Foreign Tuning System. Back of the dial is a completely automatic unit . . . centered around the Philco Aerial Selector which automatically balances built-in transformers to maintain maximum sensitivity on the wave-band being tuned. As you shift from one tuning range to another . . . this Aerial Selector tunes the aerial to the frequencies you want to hear!

## WIDER SEPARATION BETWEEN STATIONS

Through the adoption of the Philco Foreign Tuning System, separation between foreign stations has been considerably increased . . . from as much as 50% on the 610 models to six times greater separation on the De Luxe models. This heightened selectivity, as well as the increased selectivity achieved through the Philco Foreign Tuning System, give you foreign reception with amazing volume, clarity and realism.

## PICKS UP FAINTEST SIGNALS

The expertly engineered Foreign Tuning System is connected by a completely shielded lead-in to the new Philco High-Efficiency Aerial . . . scientifically designed to pick up the faintest signals . . . and pass them on to the other sensitive radio circuits with the minimum of loss.

## PHILCO BATTERY-OPERATED SETS

For unwired homes Philco offers a complete new line of the finest battery-operated radios ever built, including several models for 6-volt battery operation. These models require no "B" or "C" batteries. Battery-operated Philcos to cover every broadcast service in the air, including thrilling programs from foreign countries—also models for American broadcasts only. Marvelous performance, superb tone! The power units are scientifically designed to provide the lowest cost battery set operation in all radio. This folder shows the many different cabinets housing battery-operated Philcos.

## NEW PHILCO AUTO RADIOS

Regardless of make, model, or year, there's a new Philco Auto Radio for your car. It tucks snugly away with the convenient, "wide-vision" control unit mounted in or on the instrument panel. Operates with motor "off" or at any speed over any road. Five new models—all Superheterodynes with multi-function Philco High-Efficiency Tubes. Exclusively approved by 29 great motor-car manufacturers. Easily installed in your present car . . . just as easily transferred to a new car.

## PHILCO HIGH-EFFICIENCY TUBES

Philco High-Efficiency Tubes improve the performance of ANY radio! Replace old, worn-out tubes now! Philco Tubes are more efficient and give exceptionally long service. You will be amazed by the added enjoyment they provide—and equally surprised at their small cost. Bring your old tubes for a free check-up!

THE NEW 1937  
PHILCO



\$20 to \$600

Available on the Philco-Commercial  
Credit Time Payment Plan

**PHILCO SPREAD-BAND 675X DE LUXE**—American and Foreign . . . Automatic Tuning of favorite stations . . . Magnetic Tuning . . . 5 Tuning Ranges with Glowing Beam Tuning Range Indicator . . . Super Class A Audio System . . . 12 Philco High-Efficiency Tubes . . . Spread-Band Dial with foreign short-wave stations spread 6 times farther apart . . . 26 Tuned Circuits with the *Philco High-Efficiency Aerial* . . . Philco Foreign Tuning System.

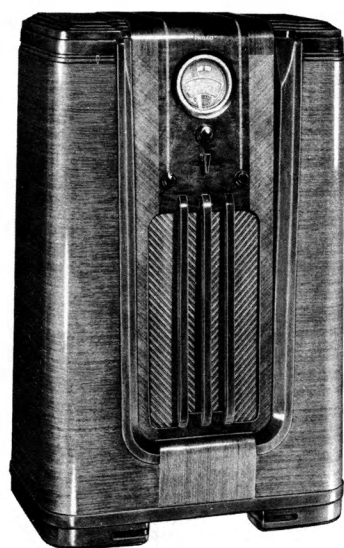
In the same cabinet: **Standard Philco Spread-Band 675X** . . . Similar to above with exception of Automatic Tuning. Foreign Short-Wave Stations spread 5 times farther apart.

## TUNING RANGE COVERAGE OF PHILCOS ON THIS PAGE

Standard American Broadcasts . . . Daytime and Night-time Foreign and American Short-Wave Broadcasts . . . State and Municipal Police\* . . . Daytime\* and Night-time Aviation . . . Ship . . . and First-Class Amateur Day and Night Bands.

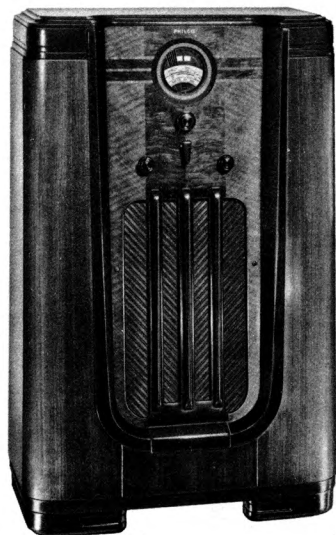
In addition: Philcos 670 and 675 cover the Second-Class Amateur Band. Philco 668 covers the Ultra-Short-Wave frequencies between 28 and 42 megacycles. Philcos 2650 and 2670 cover long-wave foreign stations and U. S. Weather Reports.

\*Spread-Band Dial instead of Municipal Police and Day Aviation on 650X.



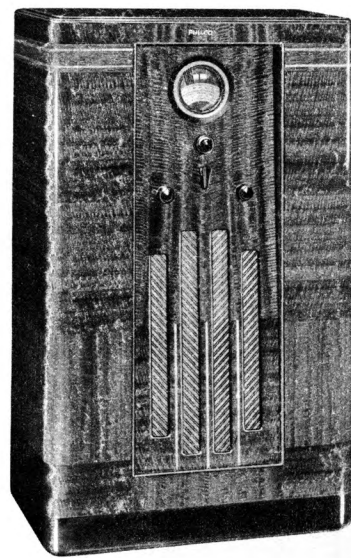
**PHILCO SPREAD-BAND 650X**—American and Foreign . . . 3 Tuning Ranges with Glowing Beam Tuning Range Indicator . . . Push-Pull Audio System . . . 8 Philco High-Efficiency Tubes . . . Spread-Band Dial with foreign stations spread 3 times farther apart . . . 17 Tuned Circuits with the *Philco High-Efficiency Aerial* . . . Shadow Tuning . . . Philco Foreign Tuning System.

In the same cabinet: **Philco 2650X** (similar to above but with long-wave tuning range).



**PHILCO 630X**—American and Foreign . . . 3 Tuning Ranges with Glowing Beam Tuning Range Indicator . . . Pentode Audio System . . . 6 Philco High-Efficiency Tubes . . . Philco Color Dial with 50% greater separation on foreign stations . . . 17 Tuned Circuits with the *Philco High-Efficiency Aerial* . . . Shadow Tuning . . . Philco Foreign Tuning System.

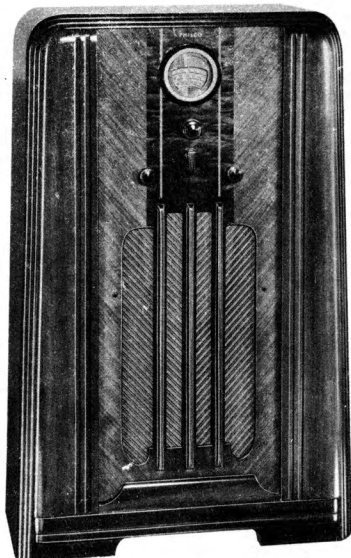
And remember . . . by automatically tuning the Philco High-Efficiency Aerial . . . the built-in Philco Foreign Tuning System more than doubles the foreign stations you can get and enjoy!



**PHILCO 640MX**

American and Foreign. An Inclined Sounding Board Philco in a cabinet of striking Modern design. This model has the same chassis as the 640X including: 3 Tuning Ranges with Glowing Beam Tuning Range

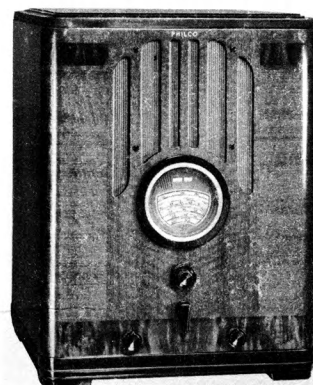
Indicator . . Push-Pull Audio System . . 7 Philco High-Efficiency Tubes . . Philco Color Dial with 50% greater separation on foreign stations . . 17 Tuned Circuits with the Philco High-Efficiency Aerial . . Shadow Tuning . . Philco Foreign Tuning System. In the same cabinet is 641MX . . American and Foreign . . for 115-volt AC-DC operation.



**PHILCO 620J**

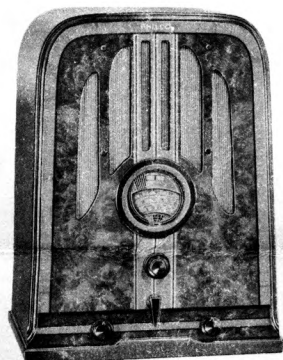
American and Foreign . . 3 Tuning Ranges with Glowing Beam Tuning Range Indicator . . Pentode Audio System . . Noise-Excluding Signal Amplifier . . 6 Philco High-Efficiency Tubes . . Philco Color

Dial with 50% greater separation on foreign short-wave stations . . 17 Tuned Circuits with the Philco High-Efficiency Aerial . . Philco Foreign Tuning System. In the same cabinet are these American and Foreign Philcos: 611J for 115-volt AC-DC operation; 623J for Battery Operation; 624J for 6-volt Battery Operation (No "B" or "C" Batteries required). 2620J (with long-wave tuning range).



**PHILCO SPREAD-BAND 670B**

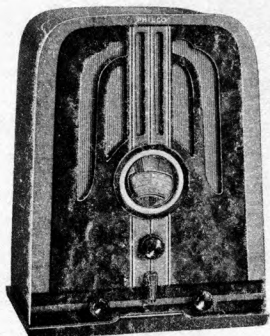
American and Foreign . . 5 Tuning Ranges with Glowing Beam Tuning Range Indicator . . Super Class A Audio System . . 11 Philco High-Efficiency Tubes . . Spread-Band Dial with foreign stations spread 5 times farther apart . . 23 Tuned Circuits with the Philco High-Efficiency Aerial . . Shadow Tuning . . Philco Foreign Tuning System. In the same cabinet 2670B (with long-wave tuning range).



**PHILCO 640B**

American and Foreign . . Shadow Tuning . . Noise-Excluding Signal Amplifier . . 3 Tuning Ranges with Glowing Beam Tuning Range Indicator . . Push-Pull Audio System . . 7 Philco High-Efficiency Tubes . . Philco Color Dial with 50% greater separation on foreign stations . . 17 Tuned Circuits with the Philco High-Efficiency Aerial . . Philco Foreign Tuning System.

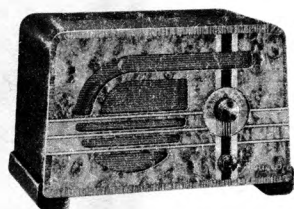
In the same cabinet is Philco 641B . . American and Foreign . . for 115-volt AC-DC operation.



**PHILCO 620B**

American and Foreign . . 3 Tuning Ranges with Glowing Beam Tuning Range Indicator . . Noise-Excluding Signal Amplifier . . Pentode Audio System . . 6 Philco High-Efficiency Tubes . . Philco Color Dial with 50% greater separation on foreign stations . . 17 Tuned Circuits with the Philco High-Efficiency Aerial . . Philco Foreign Tuning System.

In the same cabinet are these American and Foreign Philcos: 2620B (with long-wave tuning range); 623B for Battery Operation; 624B for 6-volt Battery Operation (No "B" or "C" Batteries required).



**PHILCO 602C**

American Receiver . . 115-volt AC-DC . . Illuminated Dial . . Pentode Audio System . . 5 Philco High-Efficiency Tubes . . Cabinet finished on all sides with speaker grilles at front and back.

In the same cabinet is Philco 600C for 115-volt AC operation.



**PHILCO 604C**

American and Foreign . . 115-volt AC-DC . . 2 Tuning Ranges . . Glowing Beam Station Finder . . 45° Full Vision Tuning with dial and all controls mounted on top of set . . Pentode Audio System . . 5 Philco High-Efficiency Tubes . . 12 Tuned Circuits with the Philco High-Efficiency Aerial . . Philco Foreign Tuning System.

**PHILCO SPREAD-BAND 660B**

American and Foreign . . 4 Tuning Ranges with Glowing Beam Tuning Range Indicator . . Super Class A Audio System . . 9 Philco High-Efficiency Tubes . . Spread-Band Dial with foreign stations spread 4 times farther apart . . 20 Tuned Circuits with the Philco High-Efficiency Aerial . . Shadow Tuning . . Philco Foreign Tuning System.

In the same cabinet are these American and Foreign Philcos: 665B (with 9-tube 665 chassis. Four Tuning Ranges (including ultra-short-wave frequencies); Spread-Band 650B (with 8-tube 650 chassis); 2650B (with long-wave tuning range); Spread-Band 643B for Battery Operation.



THERE'S A  
**PHILCO**  
FOR EVERY PURSE  
AND PURPOSE  
\$20 to \$600

AVAILABLE ON TIME  
PAYMENTS

Every Philco is designed, engineered and built to the same high standards of quality. Whether visible or invisible every part must conform to standards of quality which know no compromise. It is this insistence on perfection, plus the exact matching and balancing of each feature with all others that distinguishes Philco from ordinary radios and makes it truly "A Musical Instrument of Quality."

An excellent example of this scientific balancing of each unit with all others is the Philco Balanced Super-heterodyne Circuit . . used in all Philcos . . and raised to new heights of performance by Philco engineers.

Other features included in all models are complete metal shielding of circuits and tubes, patented live rubber condenser mounting, a built-in filter to prevent radiated interference, and perfect alignment of all circuits through assembly on rust-proofed steel.

By scientifically combining correctly chosen types of Philco Self-Centering Octal Base High-Efficiency Tubes, Philco achieves power and selectivity impossible with even a greater number of less efficient tubes. Another important feature on many models is Shadow Tuning,

Philco's time-tested visual tuning meter which shows exactly when each station is tuned-in perfectly.

All American and Foreign Philcos are equipped with the Philco Foreign Tuning System, more fully described on another page, and the Philco Color Dial with foreign stations named and located. Two-speed Vernier Tuning provides a Fast Speed Drive for swift turning . . a Slow Speed for fine tuning of short-wave stations.

Philco Electro-Dynamic Speakers, with the exclusive Philco Moving Coil, give faithful response from bass to treble. Fading of distant stations and blasting of local stations are counteracted by Full Automatic Volume Control . . a feature of all 1937 Philcos with five or more tubes.

**TUNING RANGE COVERAGE OF PHILCOS SHOWN ON THIS PAGE**

**PHILCO 670**

Standard American Broadcasts . . Daytime and Night-time Foreign and American Short-Wave Broadcasts . . State and Municipal Police . . Daytime and Night-time Aviation . . Ship and Amateur.

**PHILCO 665**

Standard American Broadcasts . . Daytime and Night-time Foreign and American Short-Wave Broadcasts . . State and Municipal Police . . Daytime and Night-time Aviation . . Ship and First-Class Amateur (Day and Night) . . and Ultra-Short-Wave Frequencies from 28 to 42 megacycles.

**PHILCOS 660-640-630-620-611-610**

Standard American Broadcasts . . Daytime and Night-time Foreign and American Short-Wave Broadcasts . . State and Municipal Police . . Daytime and Night-time Aviation . . Ship and First-Class Amateur (Day and Night).

**PHILCOS 2670-2650-2620**

Have similar coverage to 670, 660 and 620 except that a Long-Wave Tuning Range covering U. S. Weather Reports and foreign long-wave broadcasts is provided.

**TONE CONTROL AS APPLIED TO PHILCOS SHOWN ON THIS PAGE**

**PHILCOS 670-665-660-650**

A. Brilliant—for speech  
B. Bright—for normal reception of music  
C. Mellow—first noise-reducing stage  
D. Deep—noise-reducing for distant reception

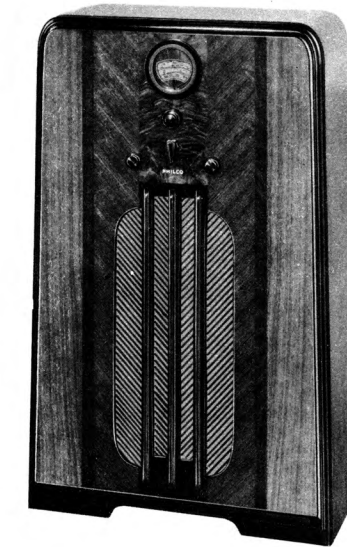
**PHILCOS 640-630-620-611-610**

A. Brilliant—for speech B. Mellow—for music  
C. Deep—noise-reducing for distant reception

**PHILCOS 89-61-60**

A. Speech B. Music

And remember . . by automatically tuning the Philco High-Efficiency Aerial . . the built-in Philco Foreign Tuning System more than doubles the foreign stations you can get and enjoy!

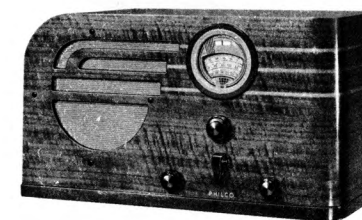


**PHILCO 610J**

American and Foreign . . 3 Tuning Ranges with Glowing Beam Tuning Range Indicator . . Pentode Audio System . . 5 Philco High-Efficiency Tubes . . Philco Color Dial with 50% greater separation on foreign

short-wave stations . . 14 Tuned Circuits with the Philco High-Efficiency Aerial . . Philco Foreign Tuning System.

In the same cabinet is Philco 38J (6-tube Battery Operated American Broadcast receiver with some American and Night Foreign short-wave stations).



**PHILCO 630T**

American and Foreign . . 3 Tuning Ranges with Glowing Beam Tuning Range Indicator . . Pentode Audio System . . 6 Philco High-Efficiency Tubes . . Philco Color Dial with 50% greater separation on foreign stations . . 17 Tuned Circuits with the Philco High-Efficiency Aerial . . Shadow Tuning . . Philco Foreign Tuning System.



**PHILCO 89B**

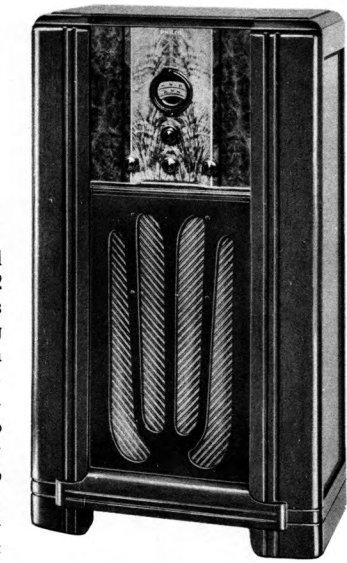
American Receiver . . 2 Tuning Ranges . . Glowing Beam Station Finder . . Pentode Audio System . . 6 Philco High-Efficiency Tubes . . 9 Tuned Circuits . . Wide Vision Dial.



**PHILCO 610B**

American and Foreign . . 3 Tuning Ranges with Glowing Beam Tuning Range Indicator . . Pentode Audio System . . 5 Philco High-Efficiency Tubes . . Philco Color Dial with 50% greater separation on foreign stations . . 14 Tuned Circuits with the Philco High-Efficiency Aerial . . Philco Foreign Tuning System.

In the same cabinet are Philco 611B . . American and Foreign for 115-volt AC-DC operation; and Philco 38B (6-tube American receiver with some American and Night Foreign short-wave stations).



**PHILCO 61F**

American and Foreign . . 2 Tuning Ranges . . Glowing Beam Station Finder . . Pentode Audio System . . 5 Philco High-Efficiency Tubes . . Philco Color Dial . . 12 Tuned Circuits with the Philco High-Efficiency Aerial . . Philco Foreign Tuning System.

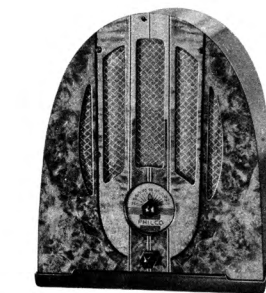
In the same cabinet are Philco 89F (6-tube American receiver) with some American and Night Foreign short-wave stations; 38F (6-tube Battery Operated. Coverage same as 60F). 611F (American and Foreign . . AC-DC); 33F (5-tube American receiver for Battery Operation); 34F (5-tube American receiver for 6-volt Battery Operation. No "B" or "C" Batteries required).



**PHILCO 610T**

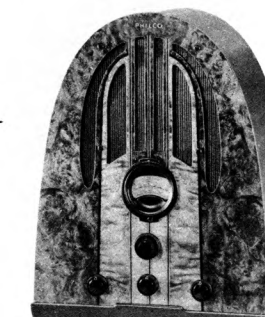
American and Foreign . . 3 Tuning Ranges with Glowing Beam Tuning Range Indicator . . Pentode Audio System . . 5 Philco High-Efficiency Tubes . . Philco Color Dial with 50% greater separation on foreign stations . . 14 Tuned Circuits with the Philco High-Efficiency Aerial . . Philco Foreign Tuning System.

In the same cabinet is Philco 611T . . American and Foreign for 115-volt AC-DC operation.



**PHILCO 84B**

American Receiver . . Pentode Audio System . . Illuminated Dial . . 4 Philco High-Efficiency Tubes. In the same cabinet is Philco 33B (5-tube American receiver for Battery Operation).



**PHILCO 61B**

American and Foreign . . 2 Tuning Ranges . . Glowing Beam Station Finder . . Pentode Audio System . . 5 Philco High-Efficiency Tubes . . Philco Color Dial . . 12 Tuned Circuits with the Philco High-Efficiency Aerial . . Philco Foreign Tuning System.

In the same cabinet are Philco 60B (5-tube American receiver with some American and Night Foreign short-wave stations); and Philco 34B (5-tube American receiver for 6-volt Battery Operation . . No "B" or "C" Batteries required).