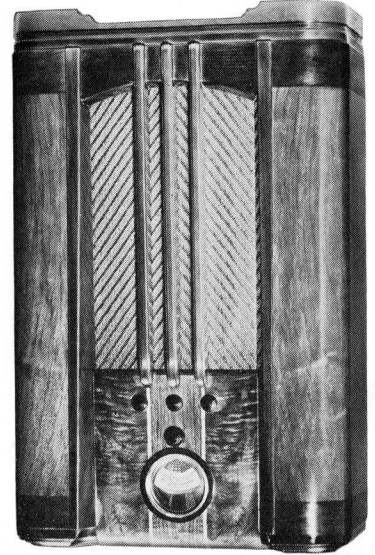


In the same cabinet but designed for 6-volt operation with Philco's new long-life Synchronous Self-Rectifying Vibrator. Philco 40X also for 6-volt operation can be instantly switched over to 110-volt AC when power is available.

**PHILCO 39X**  
for 6-Volt Operation

A battery-operated Philco American and Foreign. Class "B" Push-Pull Audio System. Inclined Sounding Board Model at the lowest price ever! Class "B" Push-Pull Pentode Audio System. Concert Grand Permanent Field Dynamic Speaker. Glow-inert Beam Station Finder. Two-Point Tone Control. Philco Color Dial names and locates foreign and domestic short-wave stations. Automatic Volume Control. Two Tuning Ranges. 6 Philco High-Efficiency Tubes. Sealed cabinet with Protective Back Shield.

**PHILCO 38X**



**Tuning Range Coverage of Philcos 38, 39 and 40**  
Two Tuning Ranges cover Standard American Broadcasts . . . Ship . . . and Foreign and Amateur . . . State Police . . . Day First-Class Short-Wave Broadcasts both Day and Night.  
**Tone Control**  
as applied to Philcos 38, 39 and 40  
**A. For Normal Reception.**  
**B. Noise-reducing for distant reception.**

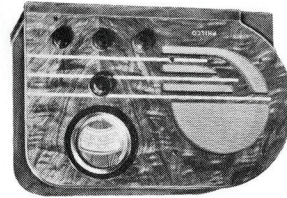
American and Foreign. With new type, long-life Philco Synchronous Self-Rectifying Vibrator. Other features similar to 38K . . . with exception of Speaker and Protective Back Shield. Philco 40T also for 6-volt operation can be instantly switched over to 110-volt AC when desired. Ideal for trailers.

**PHILCO 39T**  
for 6-Volt Operation



American and Foreign. Features similar to 38K . . . with exception of Speaker and Protective Back Shield.

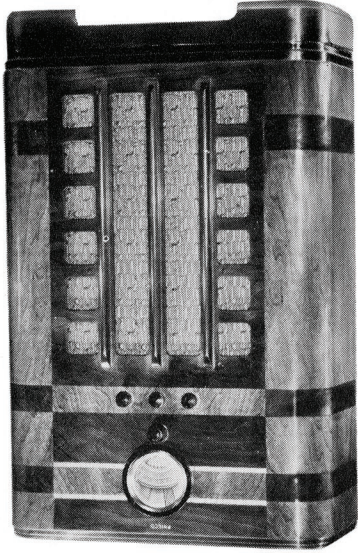
**PHILCO 38T**



In the same cabinet but designed for 6-volt operation with Philco's new long-life Synchronous Self-Rectifying Vibrator. Philco 40K also for 6-volt operation can be instantly switched over to 110-volt AC when power is available.

**PHILCO 39K**  
for 6-Volt Operation

American and Foreign. Class "B" Push-Pull Audio System. Concert Grand Permanent Field Dynamic Speaker. Glow-inert Beam Station Finder. Two-Point Tone Control. Philco Color Dial names and locates foreign and domestic short-wave stations in color for easy, instant tuning. Automatic Volume Control. Two Tuning Ranges. 6 Philco High-Efficiency Tubes. Sealed Cabinet with Protective Back Shield.

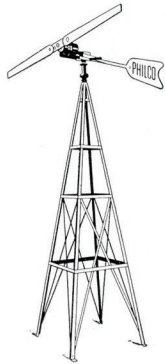


**Get American and Foreign Short-Wave Stations Day or Night!**

**2 AIDS TO LOW-COST OPERATION**

Run your radio as long as you like . . . enjoy all the programs you want to hear . . . and never worry about the battery going dead! Here are two ways to make that possible . . . and at a cost far lower than you ever expected.

**Philco Sky-Charger**

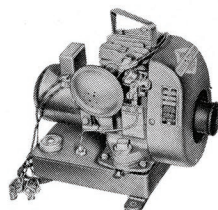


Mounted on a 10-foot high tower, the Philco Sky-Charger\* operates on the slightest breeze . . . getting the full power of the wind. The generator starts charging with the wind at 6 miles per hour . . . and in winds blowing more than 20 miles per hour, the propeller automatically tilts back to "slip the wind" and hold the speed uniform. No chains, no pulleys, no brakes . . . nothing to stick or freeze! Costs only 50c a year to operate!

\*Manufactured by Parris-Dunn Corporation

**Briggs & Stratton Power Charger**

Here's a gasoline motor battery charger that Philco has found thoroughly dependable, and priced right! Ready to run whenever you want it . . . as long as you want it. Charges both 6-volt and 2-volt radio batteries, as well as auto and small lighting batteries. Place it anywhere . . . feed it a little gas and oil . . . and it's ready for its job. Air-cooled, compact, vibrationless!



**Your Battery-Operated Philco deserves a Real Power Battery!**

Of course, a battery-operated Philco will operate on any good battery of the right type . . . but why not make sure of getting all the performance that has been built into it?

There's one sure way to do that! Hook up your Philco to a real power battery like the Philco Heavy, Rugged, Thick Plate Radio "A" Battery . . . the same kind of battery used in central stations and powerful electric locomotives! When you use one of these batteries . . . you give your radio a real power plant!

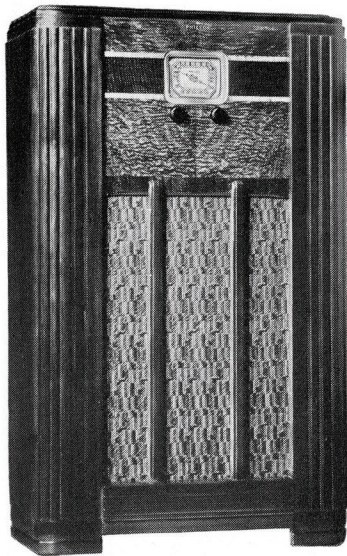
All Battery-Operated Philcos are shipped with powerful, rugged, standard or oversize Philco Power Batteries to assure delivery of the superlative performance built into each and every Philco. When ordering a battery for any radio . . . be sure to specify a heavy, rugged, thick plate Philco!

**If you are on a power line, ask for the new booklets describing AC operated Philcos. A special folder on Philco Auto Radios is also yours for the asking!**

**1938 BATTERY-OPERATED PHILCO**



# The Greatest Battery-Set Values In All Radio History!



**PHILCO 33F**

American Receiver. Push-Pull Pentode Audio System. Full Vision Dial. Permanent Field Dynamic Speaker. Automatic Volume Control. Reduction Gear Tuning. Sealed Cabinet with Protective Back Shield. 5 Philco High-Efficiency Tubes. Covers all Standard Broadcasts and State Police Calls.

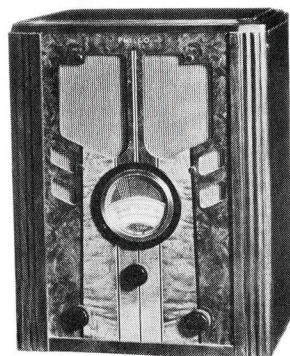
**PHILCO 34F**  
for 6-Volt Operation

In the same cabinet but designed for 6-volt operation, with new type, long-life Synchronous Self-Rectifying Vibrator. **Philco 35F** also for 6-volt operation can be instantly switched over for 110-volt AC.



**PHILCO 33B**

American Receiver. Push-Pull Pentode Audio System. Full Vision Dial. New Type Magnetic Speaker. Automatic Volume Control. Reduction Gear Tuning. 5 Philco High-Efficiency Tubes. Covers all Standard Broadcasts and State Police Calls.



**PHILCO 34B**  
for 6-Volt Operation

American Receiver for 6-volt operation, with a new type, long-life Synchronous Self-Rectifying Vibrator. **Philco 35B** also for 6-volt operation can be instantly switched over for 110-volt AC.

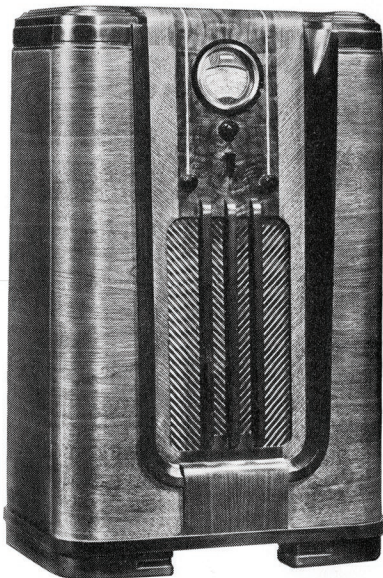
Philco covers the radio requirements of the unwired home as completely as Philco provides for the home where electric current is available!

There are battery-operated Philcos, modestly priced, which perform brilliantly on Standard American Broadcasts . . . and are available for either 2-volt or 6-volt operation.

And there are Philcos that operate on both 6-volt battery and 110-volt AC for trailers and for homes awaiting electrification.

American and Foreign Philcos add thrilling broadcasts from overseas to your sources of entertainment. Short-wave reception serves another purpose . . . a mighty important purpose to those so far from broadcasting stations that daylight reception is difficult. By tuning the short-wave bands, you can enjoy N. B. C. and Columbia programs *in broad daylight* from the American stations that broadcast them with tremendous volume to every part of the country.

Philco Battery-Operated Radios are priced to make them the greatest battery-set values ever offered . . . and you can buy them on the most liberal of terms. A small down payment . . . and payments as low as a dollar a week . . . puts a Philco in your home!



**PHILCO SPREAD-BAND 643X**

American and Foreign. Class "B" Push-Pull Audio System. Philco Spread-Band Dial with foreign stations named, located and spread four times farther apart. Philco Inclined Sounding Board. Philco Foreign Tuning System. Shadow Tuning. Concert Grand Permanent Field Dynamic Speaker. Four-Point Tone Control. Glowing Beam Tuning Range Indicator. Four Spread-Band Tuning Ranges. Noise-Excluding Signal Amplifier. Sealed Cabinet with Protective Back Shield. 7 Philco High-Efficiency Tubes. The finest battery-operated radio in all the world!



**PHILCO SPREAD-BAND 643B 643**

American and Foreign Baby Grand. Chassis duplicates features described under 643X . . . with the exception of the Philco Inclined Sounding Board and the Sealed Cabinet.

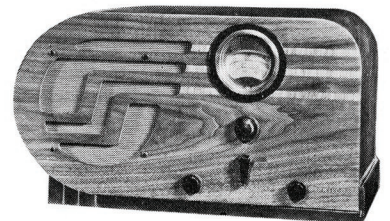


**PHILCO 623K**

American and Foreign. Three Tuning Ranges with Glowing Beam Tuning Range Indicator. Philco Foreign Tuning System. Philco Color Dial names and locates foreign and domestic short-wave stations in color. Class "B" Push-Pull Audio System. Noise-Excluding Signal Amplifier. Concert Grand Permanent Field Dynamic Speaker. Three-Point Tone Control. 6 Philco High-Efficiency Tubes. Sealed Cabinet with Protective Back Shield.

**PHILCO 624K**  
for 6-Volt Operation

In the same cabinet as the 623K described above but designed for 6-volt operation. Philco's new type Synchronous Self-Rectifying Vibrator is employed . . . and other features duplicate those of the 623K.



**PHILCO 623T**

American and Foreign Table Model. Features similar to the 623K . . . with exception of speaker and Protective Back Shield.

**PHILCO 624T**  
for 6-Volt Operation

American and Foreign Table Model for 6-volt operation with Philco's new long-life Synchronous Self-Rectifying Vibrator. Other features similar to the 623T

## Tuning Range Coverage of American and Foreign Philcos

### PHILCO 643

Standard American Broadcasts . . . State and Municipal Police . . . Day and Night Foreign and American Short-Wave Broadcasts . . . Night and Day Aviation and Day First-Class Amateur . . . Ship.

### PHILCOS 623 AND 624

Standard American Broadcasts . . . State and Municipal Police . . . Day and Night Foreign and American Short-Wave Broadcasts . . . Aviation . . . Ship . . . Day and Night First-Class Amateur.

## Tone Control of American and Foreign Philcos

### PHILCO 643

- A. Brilliant—for speech.
- B. Bright—for normal reception of music.
- C. Mellow—first noise-reducing stage.
- D. Deep—noise-reducing for distant reception.

### PHILCOS 623 AND 624

- A. Brilliant—for speech.
- B. Mellow—for music.
- C. Deep—noise-reducing for foreign reception.