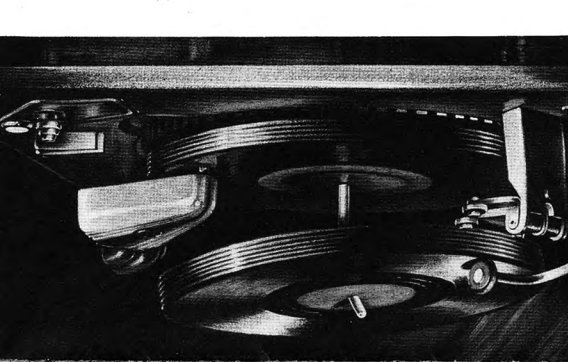


No more hand switching knobs! Pushing any button turns the radio on and gives you at once the band or station you wish without further adjustment. Simple, easy to operate!

**COMPLETE ELECTRIC PUSH-BUTTON OPERATION**

**AMAZING NEW PHILCO AUTOMATIC RECORD CHANGER**



# PHILCO

*The World's Largest Radio and Phonograph Manufacturer*

brings you new and greater achievements for 1942... the same leadership in engineering and invention that has made Philco AMERICA'S FAVORITE RADIO FOR 12 STRAIGHT YEARS

A brand new radio circuit that increases sensitivity by 4 to 1... reduces noise by 5 to 1... reduces cross-talk by 20 to 1... giving you clearer, stronger radio reception than ever before!

**NEW PHILCO DOUBLE I. F. CIRCUIT**

Frequency Modulation reception at new low cost! Finer tone and performance on all bands. And Short-Wave Reception as well as FM, giving circuit, using all the tubes for Standard and

**EXCLUSIVE PHILCO FM SYSTEM**

**EXCLUSIVE PHILCO FM SYSTEM**

**PHILCO PHOTO-ELECTRIC PHONOGRAPH**

**WIRELESS RECORD PLAYERS**

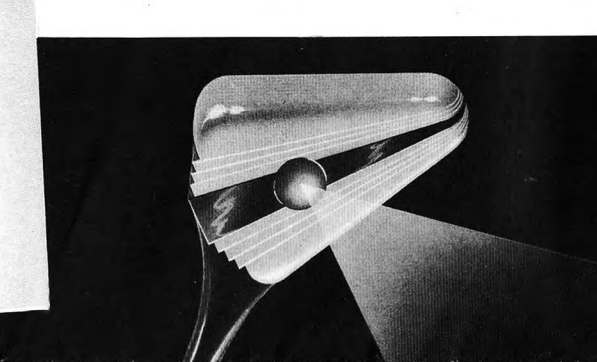
**ASK FOR FOLDERS DESCRIBING THESE OTHER PHILCO PRODUCTS!**

**ANY 1942 PHILCO YOURS ON EASIEST TERMS**

No lid to lift... no need to remove decorations, no dark, hard-to-get-at compartments. Simply tilt forward the grille, place your records and tilt it back. Interior Light illuminates turntable. Only Philco has it!

**EXCLUSIVE TILT-FRONT CABINET**

**MUSIC ON A BEAM OF LIGHT!**



*A Musical Instrument of Quality*

**PHILCO FOR 1942**

**RADIOS... RADIO-PHONOGRAPHS CONSOLES... TABLE MODELS**

## PHILCO TABLE MODELS... For Every Purse and Purpose

**355T** (left) New Double I. F. Circuit. 8 Philco tubes. Exclusive Philco FM (Frequency Modulation) System. New Built-In Super Aerial System. Separate Automatic Built-In FM Aerial. Complete Electric Push-Button Operation; 9 buttons. 3 Bands: Standard, American and Foreign Short-Wave, State Police and FM. Handsome cabinet in sliced and solid Walnut.

**350T** (right) New Double I. F. Circuit. 7 Philco tubes. Exclusive Philco FM (Frequency Modulation) System. New Built-In Super Aerial System. Separate Automatic Built-In FM Aerial. 6 Electric Push-Buttons. 3 Bands: Standard, American and Foreign Short-Wave, State Police and FM. Walnut cabinet.

**345T** New Double I. F. Circuit. 7 Philco tubes. New Built-In Super Aerial System. 6 Electric Push-Buttons. Powerful Oval Shape Speaker. Tuning Bands cover Standard Broadcasts, American and Foreign Short-Wave, State and City Police.

**340T** New Double I. F. Circuit. 7 Philco tubes. New Built-In Super Aerial System. Powerful Oval Shape Speaker. Tuning Bands cover Standard Broadcasts, American and Foreign Short-Wave Stations, State Police.

**335T** New Double I. F. Circuit. 7 Philco tubes. New Built-In Super Aerial System. Powerful Oval Shape Speaker. Pentode Audio System. Gets Standard Broadcasts, State and City Police, Night Aircraft and Amateurs.

**327T** New AC-DC Double I. F. Circuit. 6 Philco tubes. New Built-In Super Aerial System. 6 Electric Push-Buttons. Tuning Bands cover Standard Broadcasts, American and Foreign Short-Wave Stations, State Police Calls.

**323T** New AC-DC Double I. F. Circuit. 6 Philco tubes. New Built-In Super Aerial System. Beam Power Pentode Audio. 6-inch Oval Speaker. Tuning Bands: Standard Broadcasts, American and Foreign Short-Wave, State Police.

**322T** AC-DC Beam Power Superheterodyne with R. F. Stage. 6 Philco tubes. New Built-In Super Aerial System. 6-inch Oval Speaker. Tuning Bands cover Standard Broadcasts, American and Foreign Short-Wave, State Police.

**321 IVORY** AC-DC Beam Power Superheterodyne with R. F. Stage. 6 Philco tubes. Gets Standard American Broadcasts. **321T** In same Walnut cabinet with solid Walnut bezel, plastic knobs and brown trim.

**22CL** (AC only). Superheterodyne Radio and Self-Starting Sessions Electric Clock, in Walnut cabinet. 6 Philco tubes. R. F. Stage. Tuning Bands cover Standard Broadcasts, State and City Police, Night Aircraft and Amateurs.

**PHILCO TRANSITONE COMPACT RADIOS** in a wide Choice of Cabinet Designs

**PT-25** 5-tube AC-DC. Attached Aerial. Gets Standard Broadcasts, State Police. **PT-26** Built-In Loop Aerial. For Standard Broadcasts.

**PT-10** 6-tube AC-DC Beam Power Circuit. R. F. Stage. 6-inch Oval Speaker. Smart plastic cabinet. **PT-2** 5-tube AC-DC Circuit without the R. F. Stage. Same cabinet.

**PT-91** 5-tube AC-DC Beam Power Circuit. Built-In Loop Aerial. Plastic cabinet in Walnut shade. **PT-92** Same in ivory plastic cabinet.

**PT-94** 5-tube AC-DC Beam Power Circuit. Built-In Loop Aerial. Supersensitive High-Output Speaker. Modern-design Walnut cabinet.

**PT-95** Golden bleached Walnut cabinet of modern design. 5 tubes. AC-DC Circuit with Beam Power Output. Supersensitive High-Output Speaker. Built-In Loop Aerial.

**PT-4** 5-tube AC-DC with Beam Power Output. 6-inch Oval Speaker. Built-In Loop Aerial. Gleaming ivory-finished cabinet.

**PT-7** 5-tube Beam Power AC-DC Circuit. Powerful 6-inch Oval Speaker. Built-In Loop Aerial. Handsome Walnut cabinet.

**PT-93** Powerful AC-DC Circuit with 5 tubes and Beam Power Output. Supersensitive High-Output Speaker. Built-In Loop Aerial. Beautiful sliced Walnut cabinet.

**PHILCO PORTABLES AC-DC OR BATTERY** PLAY ANYWHERE INDOORS OR OUTDOORS

**PT-87** AC, DC or Battery. Powerful 5-tube Circuit. High-Output Speaker. Built-In Loop Aerial. Handsome Cowhide-graining case.

**PT-88** AC, DC or Battery. Powerful 5-tube Circuit. High-Output Speaker. Large Built-In Loop Aerial. Pigskin-graining case with detachable drop-front.

**854T** AC, DC or Battery. 7 Philco tubes. For Standard and Short-Wave reception. Walnut case. **844T** For Standard Broadcasts.

**853T** AC, DC or Battery. 7 Philco tubes. For Standard and Short-Wave reception. Drop-front. **843T** For Standard Broadcasts.

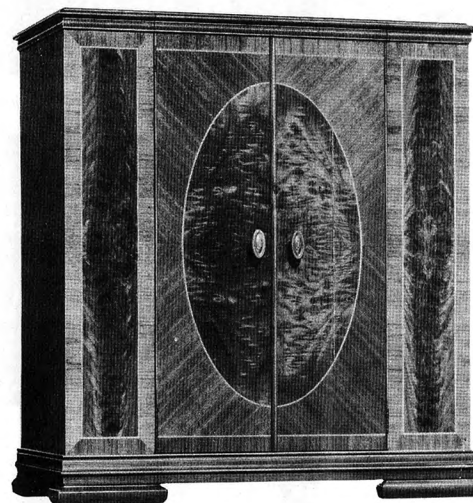
**842T** AC, DC or Battery. 7 Philco tubes. Amazing power, fine tone. High-Output Speaker, Built-In Loop Aerial. Cowhide-graining case. For Standard Broadcasts.

# "PHILCO" "Beam of Light" RADIO-PHONOGRAPH

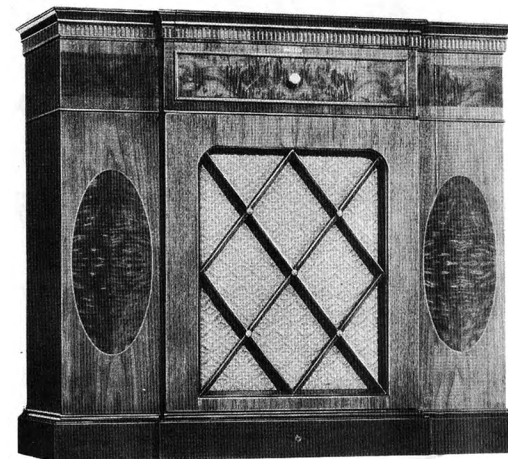
- ☆ No needles to change
  - ☆ Records last longer
  - ☆ New Purity of tone
- ... ONLY PHILCO HAS IT!



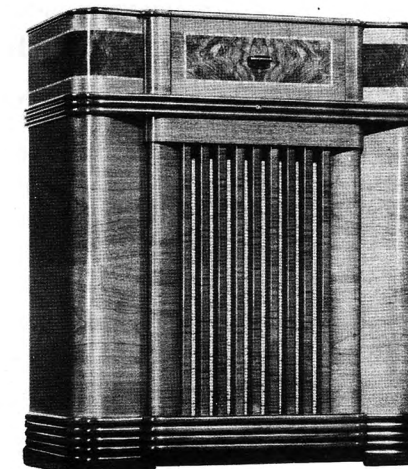
**1016** Wireless Remote Control. Photo-Electric Reproducer. 16 Philco tubes. New Philco De Luxe Record Changer with Stroboscope Pitch and Tempo Control. Variable-Speed Phonograph Motor. Exclusive Philco FM (Frequency Modulation) System. 12 Electric Push-Buttons. 4 Bands: Standard, American and Foreign Short-Wave, State Police and FM. Tilt-Front Georgian cabinet.



**1015** Photo-Electric Reproducer. 12 Philco tubes. New Philco De Luxe Record Changer with Stroboscope Pitch and Tempo Control. Variable-Speed Phonograph Motor. Exclusive Philco FM (Frequency Modulation) System. Complete Electric Push-Button Operation; 12 buttons. 4 Bands: Standard, American and Foreign Short-Wave, State Police and FM. Tilt-Front Georgian cabinet.



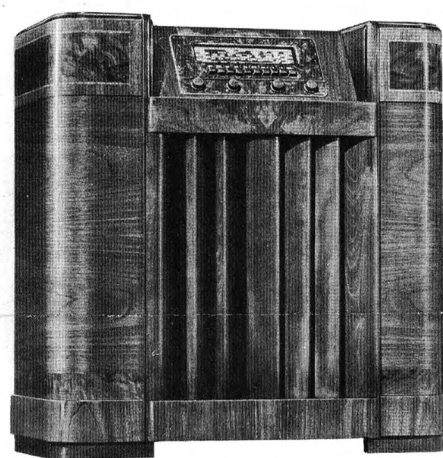
**1013** Photo-Electric Reproducer. 10 Philco tubes. New Philco Automatic Record Changer with Stroboscope Pitch and Tempo Control. Variable-Speed Phonograph Motor. Exclusive Philco FM (Frequency Modulation) System. Complete Electric Push-Button Operation; 10 buttons. 3 Bands: Standard Broadcasts, American and Foreign Short-Wave Stations, State Police and FM. Tilt-Front Hepplewhite cabinet.



**1012** Photo-Electric Reproducer. 10 Philco tubes. New Philco Automatic Record Changer with Stroboscope Pitch and Tempo Control. Variable-Speed Phonograph Motor. Exclusive Philco FM (Frequency Modulation) System. Complete Electric Push-Button Operation; 10 buttons. 3 Bands: Standard, American and Foreign Short-Wave, State Police and FM.



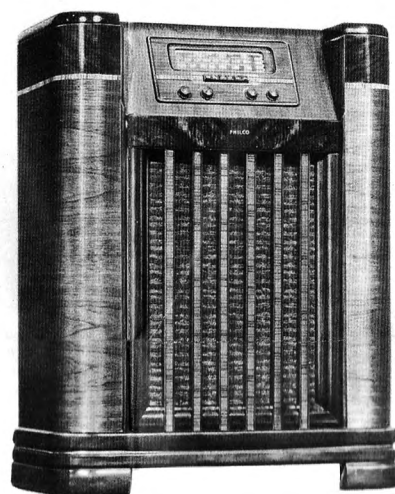
**1011** Photo-Electric Reproducer. 10 Philco tubes. New Philco Automatic Record Changer with Stroboscope Pitch and Tempo Control. Variable-Speed Phonograph Motor. Complete Electric Push-Button Operation; 10 buttons. New Philco Built-In Super Aerial System. 3 Bands: Standard Broadcasts, American and Foreign Short-Wave Stations, State and City Police Calls. Tilt-Front Sheraton cabinet.



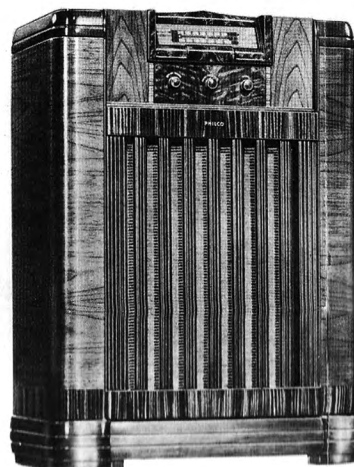
**1010** Photo-Electric Reproducer. 10 Philco tubes. New Philco Automatic Record Changer with Stroboscope Pitch and Tempo Control. Variable-Speed Phonograph Motor. Complete Electric Push-Button Operation; 10 buttons. New Built-In Super Aerial System. 3 Bands: Standard, American and Foreign Short-Wave, State and City Police. Tilt-Front Walnut cabinet.



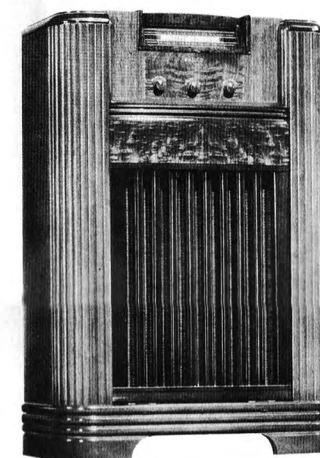
**1009** Photo-Electric Reproducer. 9 Philco tubes. New Philco Automatic Record Changer with Stroboscope Pitch and Tempo Control. Variable-Speed Phonograph Motor. 6 Electric Push-Buttons. New Built-In Super Aerial System. 2 Bands: Standard, American and Foreign Short-Wave, State Police. 18th Century period style Tilt-Front cabinet.



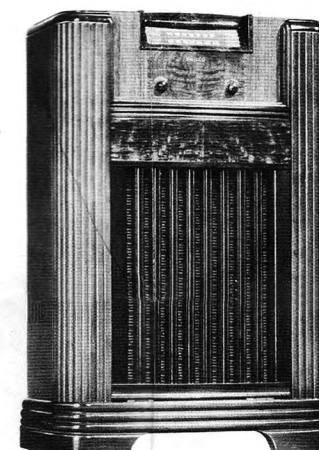
**1008** Photo-Electric Reproducer. 9 Philco tubes. New Philco Automatic Record Changer with Stroboscope Pitch and Tempo Control. Variable-Speed Phonograph Motor. 6 Electric Push-Buttons. 2 Bands: Standard, American and Foreign Short-Wave, State Police. Handsome Tilt-Front Walnut cabinet.



**1006** New Automatic Record Changer changes records gently and easily; 7 Philco tubes; Featherweight Tone Arm with Permanent Jewel, Crystal Pickup. Gets Standard Broadcasts. Beautiful walnut cabinet with Tilt-Front.

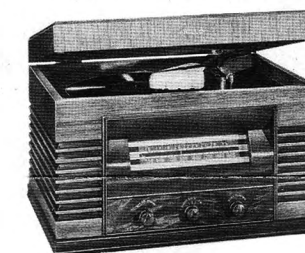


**1005** Photo-Electric Reproducer. 7 Philco tubes. New Philco Built-In Super Aerial System. New Double I. F. Radio Circuit. Tuning Bands cover Standard Broadcasts, American and Foreign Short-Wave Stations, State Police. Tilt-Front Walnut cabinet.

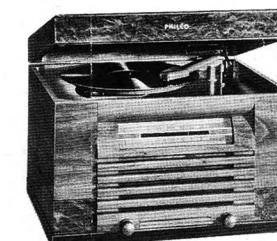


**1004** Featherweight Tone Arm with Crystal Pickup and Permanent Jewel. 6 Philco tubes. New Philco Built-In Super Aerial System. Oversize Electro-Dynamic Speaker. Gets Standard Broadcasts. Tilt-Front Walnut cabinet. Plays 10-inch and 12-inch records.

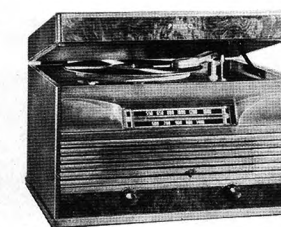
## RADIO-PHONOGRAPH TABLE MODELS GIVING YOU NEW PHILCO DEVELOPMENTS



**1003** Photo-Electric Reproducer. 7 Philco tubes. New Philco Built-In Super Aerial System. New Double I. F. Radio Circuit. Beam Power Pentode Audio System. Tuning Bands: Standard Broadcasts, American and Foreign Short-Wave, State Police.



**1002** Featherweight Tone Arm with Crystal Pickup and Permanent Jewel. 6 Philco tubes. New Built-In Super Aerial System. Gets Standard Broadcasts. Plays 10-inch and 12-inch records.

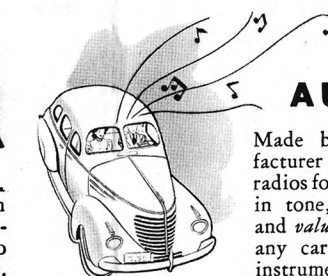


**1001** Special Phonograph Circuit. 5 Philco tubes. New, lightweight Crystal Pickup Tone Arm. 6-inch Oval Speaker. Plays 10-inch and 12-inch records. Gets Standard Broadcasts.



## NOW... HOME RECORDING More Lifelike Than Ever!

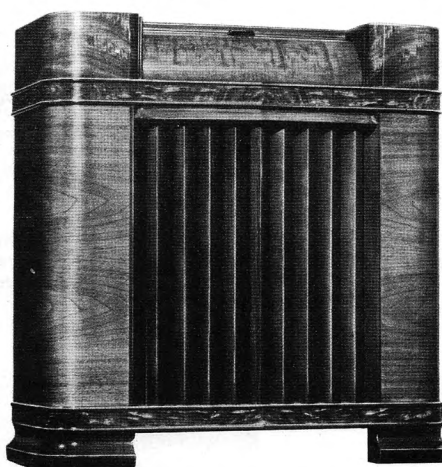
Yes, thanks to sensational new Philco inventions Home Recording is easier, more lifelike and more fun than ever! For the first time, you can adjust the speed of the motor to make and reproduce a record at exactly the same and exactly the right speed. The result is an amazing, true-to-life quality never before achieved. And, in addition, a Variable-Speed Motor enables you to make Home Recordings that will play exactly twice as long. The Philco Home Recording Unit is optional in models equipped with Philco Automatic Record Changer.



## PHILCO AUTO RADIOS

Made by the world's largest manufacturer of Automobile Radios as well as radios for the home! They offer the utmost in tone, performance, features, beauty and value. Your choice of speakers to fit any car; control plates to match the instrument panel of your car... at no extra cost!

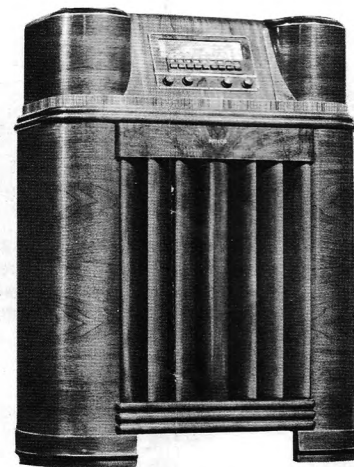
## THESE 1942 RADIO CONSOLES OFFER YOU EXQUISITE BEAUTY AND SENSATIONAL NEW PHILCO INVENTIONS



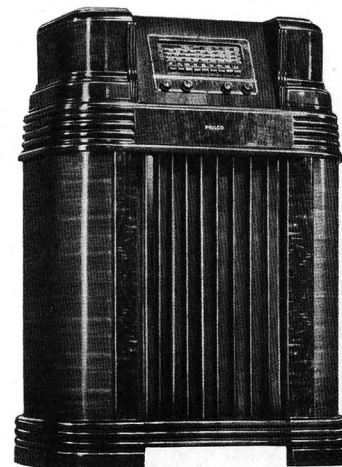
**400X** New Double I. F. Circuit. 11 Philco tubes. Exclusive Philco FM (Frequency Modulation) System. Built-In Super Aerial System. Separate Automatic Built-In FM Aerial. 10 Electric Push-Buttons. 4 Bands: Standard, American and Foreign Short-Wave, State Police and FM. Beautifully designed Walnut cabinet with Sliding Roll Lid.



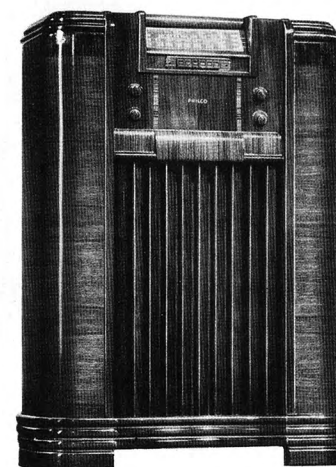
**395X** New Double I. F. Circuit. 9 Philco tubes. Exclusive Philco FM (Frequency Modulation) System. Built-In Super Aerial System. Separate Automatic Built-In FM Aerial. 10 Electric Push-Buttons. 3 Bands: Standard, American and Foreign Short-Wave, State Police and FM. Walnut cabinet of low, wide, graceful design.



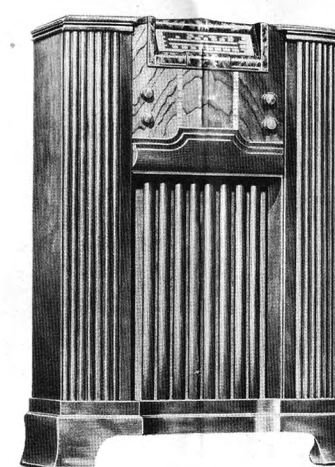
**390X** New Double I. F. Circuit. 8 Philco tubes. Exclusive Philco FM (Frequency Modulation) System. Built-In Super Aerial System. Separate Automatic Built-In FM Aerial. 9 Electric Push-Buttons. 3 Bands: Standard, American and Foreign Short-Wave, State Police and FM.



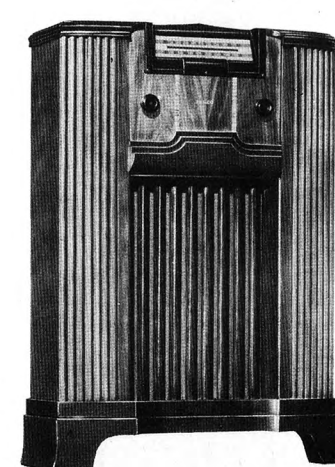
**380X** New Double I. F. Circuit. 8 Philco tubes. Built-In Super Aerial System; aerial is fully rotatable. Complete Electric Push-Button Operation; 9 buttons. 3 Bands: Standard, American and Foreign Short-Wave, State and City Police Calls. Gorgeous Walnut cabinet.



**365K** New Double I. F. Circuit. 7 Philco tubes. Built-In Super Aerial System; aerial is fully rotatable. 6 Electric Push-Buttons. Pentode Audio System. Variable Tone Control. 3 Bands: Standard, American and Foreign Short-Wave, State and City Police. Walnut cabinet.



**360F** New Double I. F. Circuit. 7 Philco tubes. Built-In Super Aerial System; aerial is rotatable. Pentode Audio System. Variable Tone Control. Oversize Electro-Dynamic Speaker. Tuning Bands cover Standard Broadcasts, American and Foreign Short-Wave, State Police.



**358F** New AC-DC Double I. F. Circuit. 6 Philco tubes. Built-In Super Aerial System; aerial is rotatable. Beam Power Pentode Audio System. Improved Dynamic Speaker. Tuning Bands cover Standard Broadcasts, State Police Calls. Handsome Walnut cabinet.