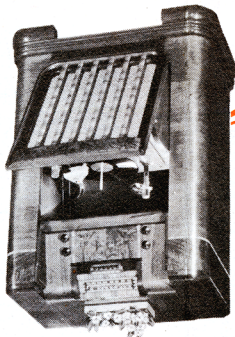


**Only Philco has it!**

New beauty and convenience! No lid, no need to remove ornaments to reach the phonograph. No dark, awkward compartments. Simply tilt forward the grille, which brings out the record turntable in full view and easy to use. A wide variety of lovely new cabinets in Period and Conventional styles . . . to suit every taste.



**TILT-FRONT CABINETS**

*New*

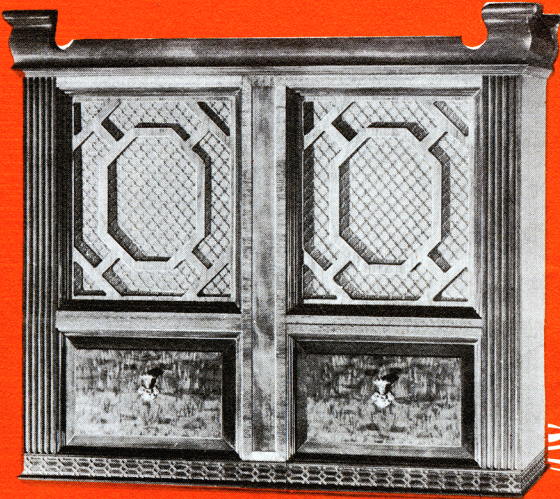
**NO NEEDLES TO CHANGE!**  
The floating jewel of the Philco Photo-Electric Reproducer is free and flexible. It floats gently in the record grooves, without gouging or pressing on their walls. That's why, in average normal use, this floating jewel lasts for 30,000 to 40,000 playings . . . 8 to 10 years! And in all that time there is no needle to change!

Philco for 1941 presents the first basic improvement in record reproduction since the invention of the phonograph. Music on a beam of light! Instead of a rigid steel needle that transfers its vibrations through laboriously twisting a hard crystal, the new Philco Photo-Electric Reproducer has a rounded jewel that reflects its vibrations on a beam of light from a featherweight mirror to a Photo-Electric Cell. It brings you thrilling new benefits, and *Only Philco has it!*

**RECORDS LAST 10 TIMES LONGER!**  
Feel the floating jewel of the Philco Photo-Electric Reproducer. It is round and flexible. It does not prick the finger. It glides in the record grooves without grinding. You can even drop the reproducer on the record or rub it roughly across its face and the record continues to play as perfectly as ever. Records last 10 times longer! Yes, you can play and enjoy your most precious records as much as 700 times without fear of wear!

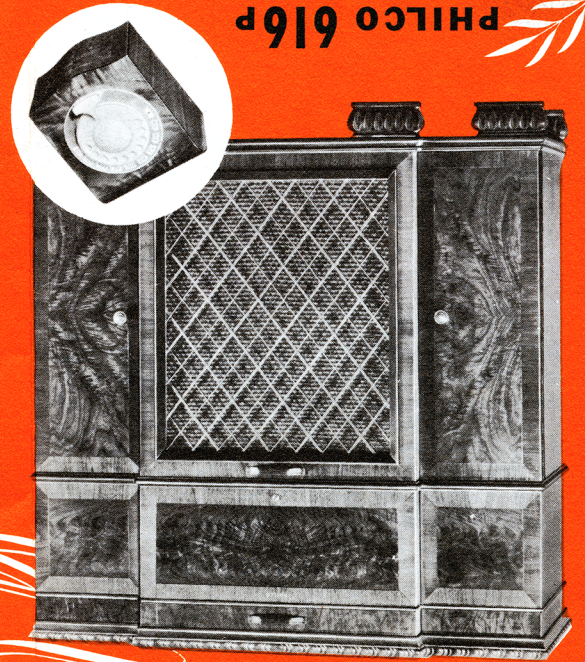
**New Philco Photo-Electric Radio-Phonograph plays any record on a beam of light!**

**PHILCO 611P**



Philco Photo-Electric Reproducer, with floating jewel. 10 tubes, including new XXL noise-reducing Converter tube. Special Phonograph Circuit. Deluxe Inter-Mix Record Changer. New Tilt-Front Cabinet, authentic Chipendale design. New Overseas Wave-Band. Built-In American and Overseas Aerial System. Cathedral Speaker. 8 Electric Push-Buttons. Variable Tone Control for records and radio. Three Tuning Bands cover Standard Broadcasts, American and Foreign Short-Wave Stations, State and City Police Calls, Aircraft, Ship and Amateur Stations. Illuminated Shifting Arrow indicates Band in use on edge-lighted horizontal Dial.

**PHILCO 616P**



Wireless Remote Control of Radio and Records. Philco Photo-Electric Reproducer, with floating jewel. 16 tubes, including new XXL noise-reducing Converter tube. Special Phonograph Circuit. Deluxe Inter-Mix Record Changer. Tilt-Front Georgian Cabinet. New Overseas Wave-Band. Built-In American and Overseas Aerial System. Cathedral Speaker. 8 Electric Push-Buttons. Variable Tone Control. 4 Tuning Bands cover Standard Broadcasts, American and Foreign Short-Wave Stations, State and City Police Calls, Aircraft, Ship and Amateur Stations. Illuminated Shifting Arrow indicates Band in use on edge-lighted horizontal Dial.

**MAKE YOUR OWN RECORDS AT HOME**



A full-fledged professional Home Recording Unit, designed and built by Philco for home use, is optional equipment with Philco Photo-Electric Radio-Phonographs. Large microphone with acoustic chamber insures lifelike recordings. Free from record scratch. A new source of pleasure for all the family.

**ASK FOR FOLDERS DESCRIBING THESE OTHER PHILCO PRODUCTS!**

Console Radios • Portable Radios • Farm Radios  
Auto Radios • Philco Tubes • Philco Refrigerators  
Philco-York Air Conditioners • Dry Batteries

The New 1941  
**PHILCO**  
Photo Electric  
RADIO-  
PHONOGRAPH

**PLAYS ANY RECORD ON A BEAM OF LIGHT!**

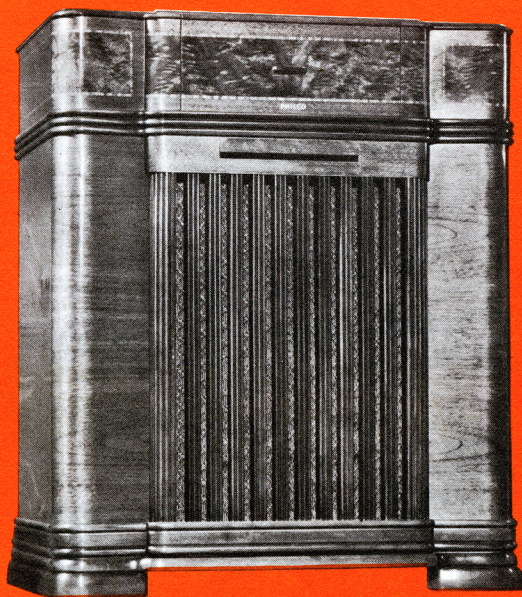
with the  
**AMAZING PHILCO PHOTO-ELECTRIC REPRODUCER -**



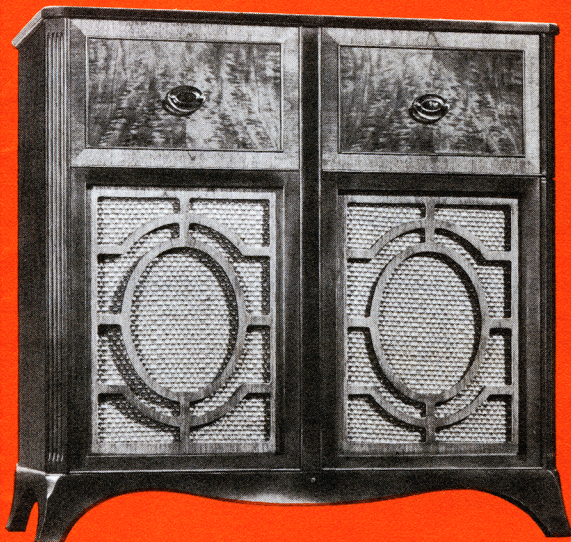
**FIRST BASIC IMPROVEMENT IN RECORD REPRODUCTION SINCE THE INVENTION OF THE PHONOGRAPH . . .**

**No needles to change! Records last 10 times longer! New purity of tone!**

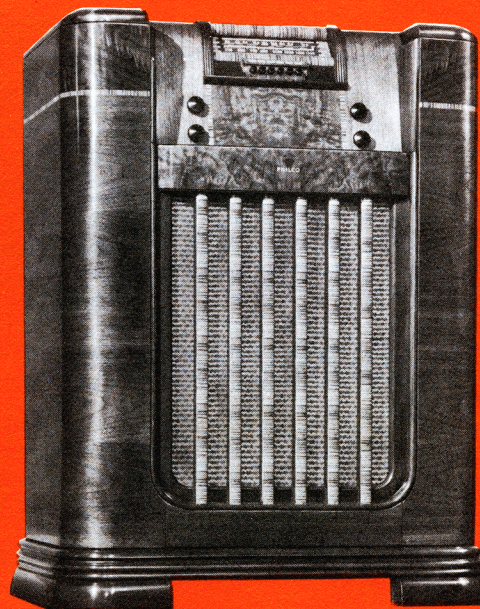




**PHILCO 610P**



**PHILCO 609P**

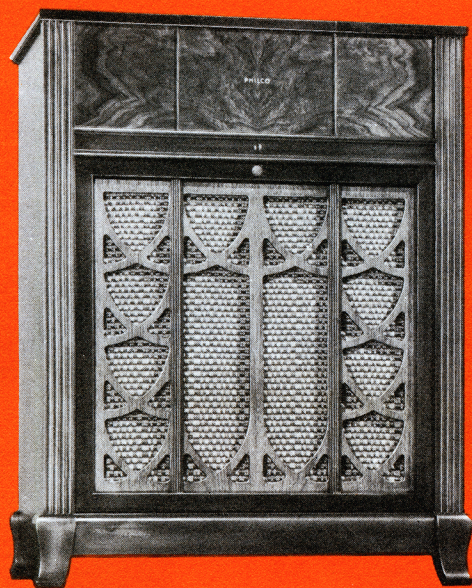


**PHILCO 608P**

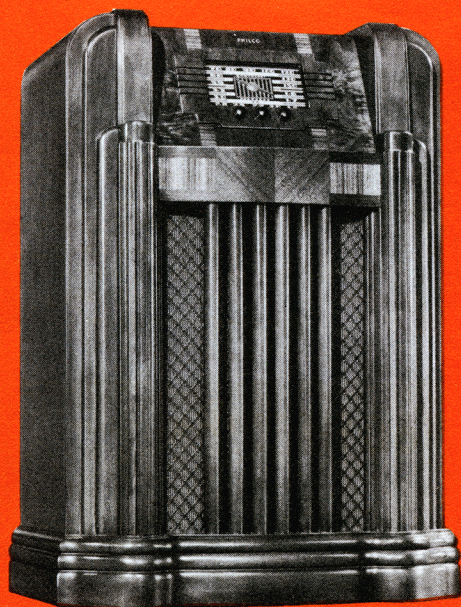
Philco Photo-Electric Reproducer, with floating jewel. 10 tubes, including new XXL noise-reducing Converter tube. Special Phonograph Circuit. Automatic Record Changer. New Tilt-Front Cabinet, of gorgeous design. New Overseas Wave-Band. Built-In American and Overseas Aerial System. Cathedral Speaker. 8 Electric Push-Buttons. Variable Tone Control for records and radio. 3 Tuning Bands cover Standard Broadcasts, American and Foreign Short-Wave Stations, State and City Police Calls, Aircraft, Ship and Amateur Stations. Illuminated Shifting Arrow for Band Indication. Illuminated Dial.

Philco Photo-Electric Reproducer, with floating jewel. 9 tubes, including new XXL noise-reducing Converter tube. Special Phonograph Circuit. Automatic Record Changer. New Tilt-Front Cabinet, authentic Hepplewhite design. New Overseas Wave-Band. Built-In American and Overseas Aerial System. Concert Grand Speaker. 6 Electric Push-Buttons. Variable Tone Control for records and radio. Tuning Bands cover Standard Broadcasts, American and Foreign Short-Wave Stations, State Police Calls. Illuminated Shifting Arrow indicates the Band which is in use on the illuminated horizontal Dial.

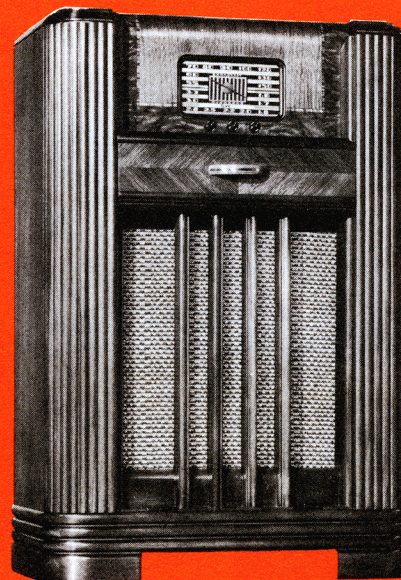
Philco Photo-Electric Reproducer, with floating jewel. 9 tubes, including new XXL noise-reducing Converter tube. Special Phonograph Circuit. Automatic Record Changer. New Tilt-Front Cabinet, in highly-figured butt and sliced Walnut. New Overseas Wave-Band. Built-In American and Overseas Aerial System. Concert Grand Speaker. 6 Electric Push-Buttons. Variable Tone Control for records and radio. Tuning Bands cover Standard Broadcasts, American and Foreign Short-Wave Stations, State Police Calls. Illuminated Shifting Arrow indicates Band in use on illuminated horizontal Dial.



**PHILCO 607P**



**PHILCO 605P**

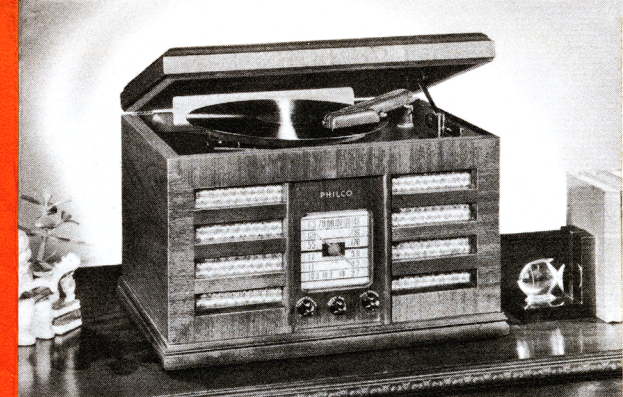


**PHILCO 604P**

Six tubes, including new noise-reducing XXD Converter and Oscillator tube. Special Phonograph Circuit with Beam Power Pentode Output tube and Oversize Permanent Magnet Dynamic Speaker. Automatic Record Changer. New Tilt-Front Cabinet of Period design in beautifully-grained Walnut woods. Improved Crystal Phonograph Tone Arm. New Overseas Wave-Band. Built-In American and Overseas Aerial System. Tone Control. Two-way switch and Volume Control. Tuning Bands cover Standard Broadcasts, American and Foreign Short-Wave Stations, State Police Calls.

Six tubes, including new noise-reducing XXD Converter and Oscillator tube. Special Phonograph Circuit with Beam Power Pentode Output tube and Oversize Permanent Magnet Dynamic Speaker. Automatic Record Changer. New Tilt-Front Cabinet in beautiful Walnut woods and inlays. Tone Control for records and radio. Improved Crystal Phonograph Tone Arm. New Overseas Wave-Band. Built-In American and Overseas Aerial System. Two-way switch and Volume Control. Tuning Bands cover Standard Broadcasts, American and Foreign Short-Wave Stations, State Police Calls.

Six tubes, including new XXD noise-reducing Converter and Oscillator tube. Special Phonograph Circuit with Beam Power Pentode Output tube and Oversize Permanent Magnet Dynamic Speaker. New Tilt-Front Cabinet in lovely Walnut woods. Improved Crystal Phonograph Tone Arm. Plays 10-inch and 12-inch records. New Overseas Wave-Band. Built-In American and Overseas Aerial System. Two-way switch and Volume Control. Tone Control. Self-starting noiseless Phonograph Motor. Tuning Bands cover Standard Broadcasts, American and Foreign Short-Wave, State Police Calls.



**PHILCO 603P**

Six-tubes. Oversize Dynamic Speaker. Crystal Pick-up. Plays 10-inch and 12-inch records, with lid closed. New Overseas Wave-Band. Built-In American and Overseas Aerial System. Walnut cabinet. Gets Standard Broadcasts, American and Foreign Short-Wave, State Police.



**PHILCO 602P**

Five-tube Phonograph Circuit. Oversize Dynamic Speaker. Crystal Pick-up. Plays 10-inch and 12-inch records with lid closed. Built-In Supersensitive Aerial System. Two-way switch and Volume Control. Tone Control for Phonograph and Radio. Gets all Standard Broadcasts, State Police Calls.



**PHILCO RP2**  
WIRELESS RECORD PLAYER

Plays records through your radio . . . without wire connections to the radio. Reproduces 10-in. or 12-in. records with full beauty of tone.

**PHILCO RP1**

Similar to RP2, but has no lid.

## NEW KIND OF OVERSEAS WAVE-BAND

Brings you Europe . . . 500% Stronger and Clearer . . . 5 Times Easier to Tune!

The 1941 Philco Radio-Phonograph brings you the latest exclusive radio achievements of Philco engineers. A brand-new radio circuit, a new kind of Overseas Wave-Band, new Built-In American and Overseas Aerial System . . . bringing you purer tone, greater selectivity and sensitivity and five times stronger, clearer short-wave reception than radio has ever known.



Every 1941 Philco Radio-Phonograph is built to receive Television Sound and Frequency Modulation (FM) . . . the Wireless Way!