

Through and through, PHILCO for 1941 offers you the greatest values in its history. More tubes for the money... Bigger, Finer Speakers... New Conveniences in Tuning and Operation. AND... the loveliest cabinets in Every 1941 Philco is built to receive Television Sound and Frequency Modulation (FM) ... the Wireless Way!

NEW BUILT-IN AMERICAN AND OVERSEAS AERIAL SYSTEM gives you far greater sensitivity on short-wave and standard reception. And you need no "installation," no aerial or ground wires on your roof or around your room... just plug in anywhere and play!

A BRAND-NEW RADIO CIRCUIT, dreamed of but never before achieved by radio science, reduces noise by 5 to 1, reduces "cross talk" by 20 to 1 and increases selectivity by more than 2 to 1... all this made possible by the amazing XXL Noise-Reducing Converter Tube, a new invention by Philco engineers.

In these stirring times, it makes the capitals of Europe as much a part of your daily radio fare as your favorite chain programs or local stations. It's brand-new... sensational... nothing like it has ever been known in radio!

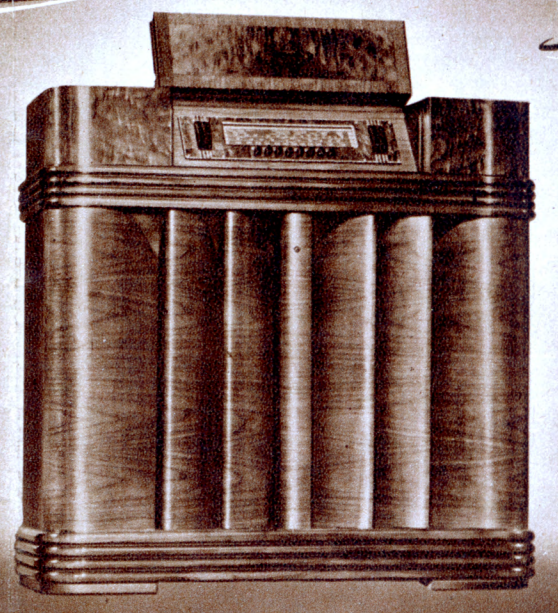
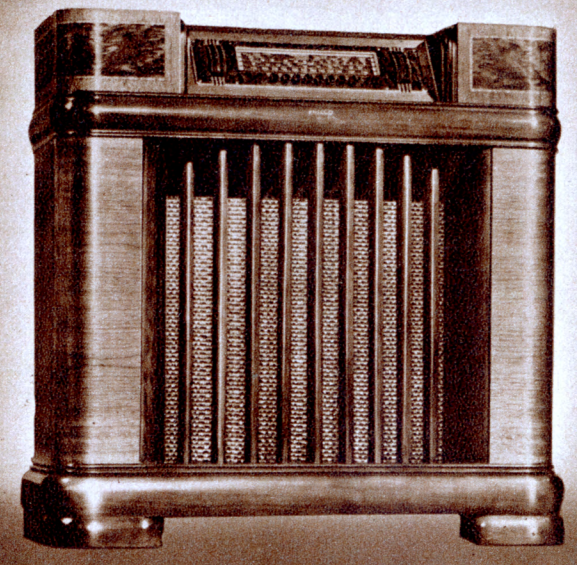
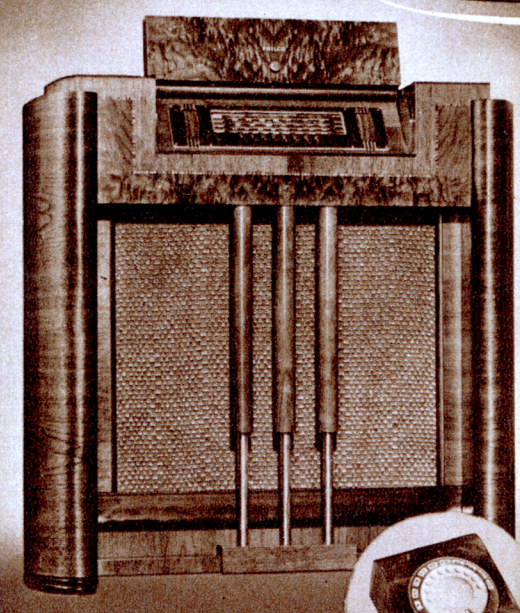
Makes Foreign Reception 500% Stronger and Clearer than ever before; 5 times easier to tune! Only Philco Has It!

# A NEW KIND OF OVERSEAS WAVE-BAND

Never since time began have world events so closely touched the daily lives of all people. At home and at work, history hovers about us. And radio keeps us in touch! As the course of history moves, the capitals of Europe speak. Direct by Short Wave, at almost every hour, they send us their interpretations of the day's events in vivid, tense, dramatic reports. Now Philco makes history while history is made! A momentous achievement in overseas reception enables you to tune in the capitals of Europe as never before. With a new Philco you can scoop the headlines! Short Wave becomes as much a part of your daily radio fare as your favorite local stations!

## PHILCO MAKES HISTORY WHILE HISTORY IS MADE!

# THE UTMOST IN RADIO TONE AND PERFORMANCE FOR 1941



**316RX** Wireless Remote Control tunes favorite programs from any room without wires or connections. 15-tube Superheterodyne Circuit, including new XXL tubes. New Overseas Wave-Band. Built-In American and Overseas Aerial System. Variable Tone Control. 8 Electric Push-Buttons; 7 for favorite stations, 1 "Remote." Call Letters individually illuminated. Stately Walnut cabinet. Illuminated Shifting Band Arrow. 4 Tuning Bands cover American, American and Foreign Short-Wave, State and City Police Calls, Aircraft, Ship and Amateurs.

**295X** Eleven-tube Superheterodyne Circuit, including two newly invented, noise-reducing XXL Converter tubes. New kind of Overseas Wave-Band. Built-In American and Overseas Aerial System. Cathedral Balanced Field Speaker. Variable Tone Control. 8 Electric Push-Buttons; 7 for favorite stations, one for "On-Off." Illuminated Call Letters. Inclined Sounding Board and Control Panel. Highly figured Walnut cabinet. Illuminated Shifting Band Arrow; 4 Tuning Bands cover Standard Broadcasts, American and Foreign Short-Wave, State and City Police Calls, Aircraft, Ship and Amateurs.

**300X** Twelve-tube Superheterodyne Circuit, including two newly invented, noise reducing XXL Converter tubes. New kind of Overseas Wave-Band. Built-In American and Overseas Aerial System. Cathedral Balanced Field Speaker. Variable Tone Control. 8 Electric Push-Buttons; 7 for favorite stations, one for "On-Off." Illuminated Call Letters. Inclined Sounding Board and Control Panel. Distinctive Walnut cabinet. Illuminated Shifting Band Arrow; 4 Tuning Bands cover Standard Broadcasts, American and Foreign Short-Wave, State and City Police Calls, Aircraft, Ship and Amateurs.

Sensational 1941 Philco Inventions

- NEW PHOTO-ELECTRIC RADIO-PHONOGRAPH
- RECORDS LAST 10 TIMES LONGER!
- NO NEEDLES TO CHANGE
- GLORIOUS TONE
- HOME RECORDING
- RECORDS REPRODUCED ON A BEAM OF LIGHT
- NEW KIND OF OVERSEAS WAVE-BAND
- NEW TILT-FRONT CABINET
- EUROPE... 5 TIMES STRONGER 5 TIMES EASIER TO TUNE
- BIGGER SPEAKERS
- JUST PLUG IN AND PLAY NO AERIAL OR GROUND WIRES
- NEW AMERICAN AND OVERSEAS AERIAL SYSTEM
- MORE TUBES FOR THE MONEY

## MAKE YOUR OWN RECORDS AT HOME!



The Philco Home Recording Unit is optional with Philco Photo-Electric Phonographs. It is professional equipment with large microphone and acoustic chamber, insuring life-like recordings. Free from record scratch. Records played through Philco Photo-Electric Reproducer are good for 10 times as many playings! Make your own records... a new source of pleasure for all the family.



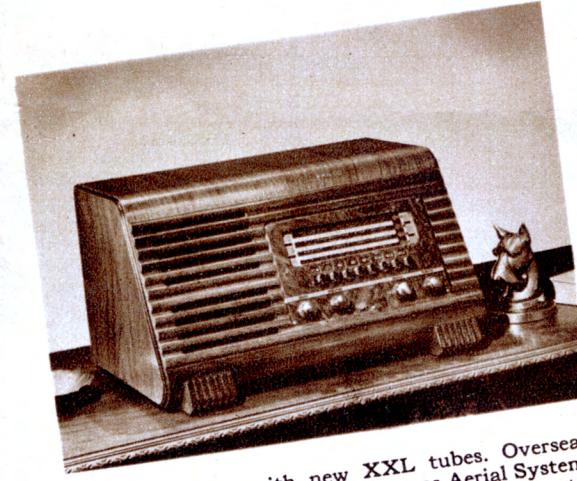
ANY 1941 PHILCO YOURS ON EASIEST MONTHLY TERMS

# PHILCO

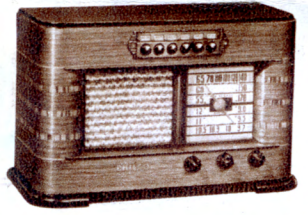
## RADIOS AND RADIO-PHONOGRAPHS FOR 1941

A MUSICAL INSTRUMENT OF QUALITY

## Table Models of Quality!



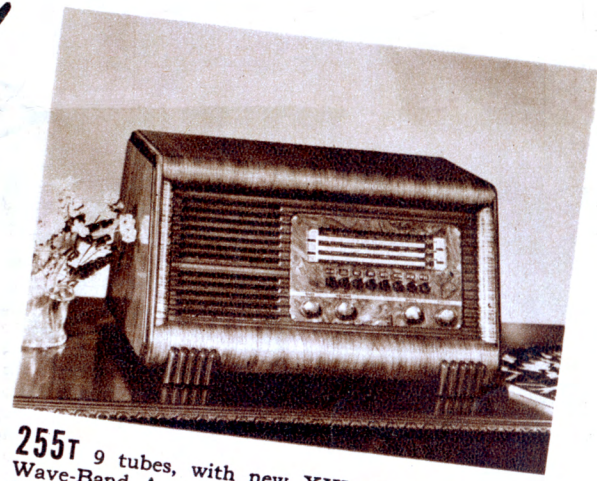
**250T** 8 tubes, with new XXL tubes. Overseas Wave-Band. American and Overseas Aerial System. Variable Tone Control. 8 Push-Buttons; 7 for stations, one for "On-Off." Push-Pull Pentode Audio. Illuminated Shifting Band Arrow. 3 Bands cover Standard, American and Foreign Short-Wave, State and City Police, Aircraft, Ship and Amateurs.



**225C** Six tubes. AC-DC. R. F. Stage. Built-In Super Aerial System. Electro-Dynamic Speaker. 6 Electric Push-Buttons. Pentode Audio System. Gets Standard Broadcasts, State and City Police, Aircraft, Amateurs.



**226C** Six tubes. AC-DC. New XXD tube. New Overseas Wave-Band. Built-In American and Overseas Aerial System. 6 Electric Push-Buttons. Gets Standard Broadcasts, American and Foreign Short-Wave, State Police.



**255T** 9 tubes, with new XXL tubes. Overseas Wave-Band. American and Overseas Aerial System. Variable Tone Control. 8 Push-Buttons; 7 for stations, one for "On-Off." Push-Pull Pentode Audio. Illuminated Shifting Band Arrow. 3 Bands cover Standard, American and Foreign Short-Wave, State and City Police, Aircraft, Ship and Amateurs.



**245T** Seven-tube Superheterodyne with new XXL tubes. Overseas Wave-Band. Built-In American and Overseas Aerial System. Variable Tone Control. 6 Electric Push-Buttons. American and Foreign Short-Wave, State, City Police, Aircraft, Amateurs.



**220C** Six tubes. AC-DC. R. F. Stage. Built-In Super Aerial System. Pentode Audio System. Automatic Volume Control. Broadcast coverage includes Standard Broadcasts, State and City Police, Aircraft and Amateurs.



**221C** Six tubes. AC-DC. New XXD tube. New Overseas Wave-Band. Built-In American and Overseas Aerial System. Pentode Audio System. Gets Standard Broadcasts, American and Foreign Short-Wave, State Police.



**230T** Seven-tube Superheterodyne, new XXL tubes. Built-In Super Aerial System. Pentode Audio System. Tone Control. Illuminated Dial. Smart cabinet of reddish brown plastic. Gets Standard, State and City Police, Aircraft, Amateurs.



**220CI** AC-DC. Same as 220C in cabinet of gleaming Ivory-finished wood with contrasting dark trim.



**221CI** AC-DC. Same as 221C in cabinet of Walnut with Ivory-finished bezel; knobs and trim.

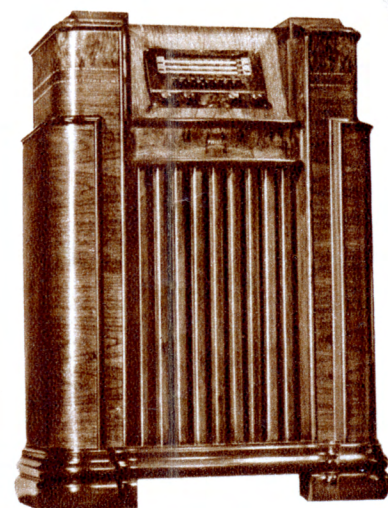
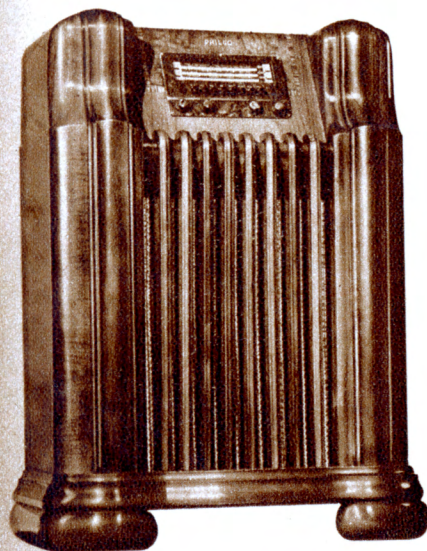


**240T** Seven-tube Superheterodyne with new XXL tubes. Overseas Wave-Band. Built-In American and Overseas Aerial System. Variable Tone Control. Pentode Audio System. Illuminated Dial. Gets Standard, American and Foreign Short-Wave, State Police.



**235T** Seven-tube Superheterodyne including new XXL tubes. Built-In Super Aerial System. Pentode Audio System. Tone Control. Illuminated Dial. Gets Standard Broadcasts, State and City Police, Aircraft, Amateurs.

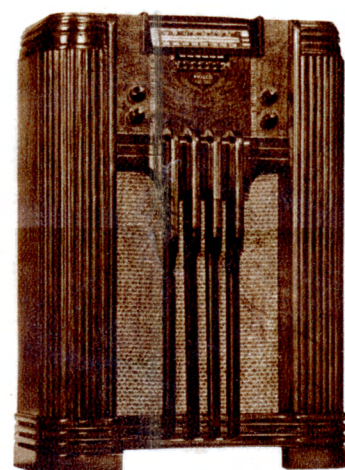
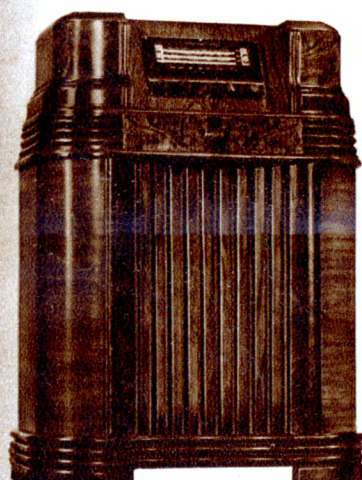
PHILCO OFFERS ITS SENSATIONAL 1941 RADIO INVENTIONS IN A STYLE TO SUIT YOUR TASTE, AT A PRICE TO SUIT YOUR PURSE!



**290X** Ten-tube Superheterodyne Circuit, including new XXL tubes. New Overseas Wave-Band. American and Overseas Aerial System. 8 Electric Push-Buttons. 3 Tuning Bands cover Standard, American and Foreign Short-Wave, State and City Police, Aircraft, Ship and Amateur broadcasts.

**287X** Nine-tube Superheterodyne Circuit, including new XXL tubes. Overseas Wave-Band. American and Overseas Aerial System. 8 Electric Push-Buttons. 3 Tuning Bands cover Standard, American and Foreign Short-Wave, State and City Police, Aircraft, Ship and Amateur broadcasts.

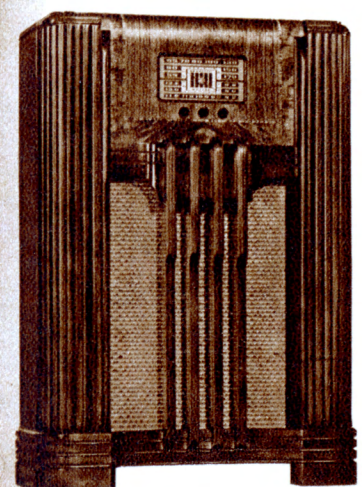
**285X** Nine-tube Superheterodyne Circuit, including new XXL tubes. Overseas Wave-Band. Built-In American and Overseas Aerial System. 8 Electric Push-Buttons. 3 Tuning Bands cover Standard Broadcasts, American and Foreign Short-Wave, State and City Police, Aircraft, Ship, Amateurs.



**280X** Eight-tube Superheterodyne Circuit, including new XXL tubes. New Overseas Wave-Band. Built-In American and Overseas Aerial System. 8 Electric Push-Buttons. 3 Tuning Bands cover Standard Broadcasts, American and Foreign Short-Wave, State and City Police Calls, Aircraft, Ship and Amateurs.

**265K** Seven-tube Superheterodyne Circuit, including new XXL tubes. New Overseas Wave-Band. Built-In American and Overseas Aerial System. 6 Electric Push-Buttons. 3 Tuning Bands cover Standard Broadcasts, American and Foreign Short-Wave, State and City Police Calls, Aircraft, Ship and Amateurs.

**260F** Seven-tube Superheterodyne Circuit, including new XXL tubes. New Overseas Wave-Band. Built-In American and Overseas Aerial System. 6 Electric Push-Buttons. Covers Standard Broadcasts, American and Foreign Short-Wave Programs and State Police Calls.



**SMART NEW 1941 PHILCO PORTABLE RADIOS**



**89c** New Shoulder Strap Portable gives *real* radio performance... plays anywhere! 4 tubes... Built-In Aerial. Light, plastic case: top grain cowhide strap.



**For Hikes, Picnics, on the beach... wherever you go, indoors or out!**



**851T** For AC, DC or Battery. Gets Standard Broadcasts, American and Foreign Short-Wave.



**841T** AC, DC or Battery. 5 tubes. Built-In Loop Aerial. Airplane cloth case, buffalo grain trim.



**83T** Push-Pull circuit. 5 tubes. Built-In Loop Aerial. Smart ivory rawhide case.



**87PT** For AC, DC or Battery. Powerful 5-tube circuit. Low battery drain. Smart, light weight case. Philco quality, lowest price.

**81T** Powerful 4 tube circuit. Superb tone.

*Amazing Philco Photo-Electric*  
**RADIO-PHONOGRAPHS**

**RECORDS REPRODUCED ON A BEAM OF LIGHT!**

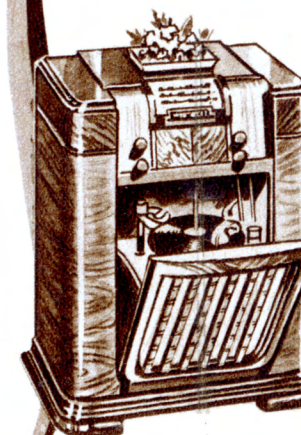
The first basic improvement in record reproduction since the invention of the phonograph! An amazing Philco invention—the Photo-Electric Reproducer—transmits sound on a beam of light... plays any record through the reflections of a floating jewel from a tiny mirror to a photo-electric cell. Only Philco has it!

**No Needles to Change**  
In average normal use the floating jewel of the Philco Photo-Electric Phonograph lasts for 30,000 to 40,000 playings, or the equivalent of 8 to 10 years of use!

**Records Last 10 Times Longer**  
No more hoarding your most prized and precious records! You can play them, now, as much as 700 times without fear of wear

**Glorious Tone**  
For the first time, you hear the *full* beauty of every record. Needle talk and surface noise no longer mar its purity. The most glorious record tone you have ever heard!

**Make Your Own Records**  
See back page for full description of the new Philco Home Recording Unit, available for every Philco Photo-Electric Radio-Phonograph.



*New!*  
**TILT-FRONT CABINET**

New beauty and convenience. *No lid*, no need to remove ornaments to reach the phonograph. No dark, awkward unsightly compartment. New principle tilts phonograph forward, in full view and easy to use.

*Only Philco has it!*



**616P** Wireless Remote Control. Photo-Electric Reproducer. 16 tubes. Inter-Mix Record Changer. Tilt-Front Georgian cabinet. Overseas Wave-Band. Built-In American and Overseas Aerial System. 8 Electric Push-Buttons. 4 Tuning Bands. Standard, American and Foreign Short-Wave, State, City Police, Aircraft, Ship, Amateurs.



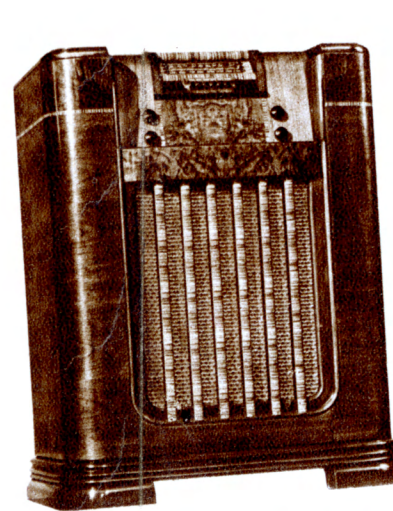
**611P** Philco Photo-Electric Reproducer. 10-tube Phonograph Circuit. Deluxe Inter-Mix Record Changer. Tilt-Front cabinet, authentic Chippendale design. New Overseas Wave-Band. Built-In American and Overseas Aerial System. 8 Electric Push-Buttons. 3 Tuning Bands cover Standard Broadcasts, American and Foreign Short-Wave, State and City Police, Aircraft, Ship and Amateurs.



**610P** Philco Photo-Electric Reproducer. 10-tube Phonograph Circuit. Automatic Record Changer. Tilt-Front Cabinet. New Overseas Wave-Band. Built-In American and Overseas Aerial System. 8 Electric Push-Buttons. 3 Tuning Bands cover Standard Programs, American and Foreign Short-Wave, State and City Police, Aircraft, Ship, Amateurs.



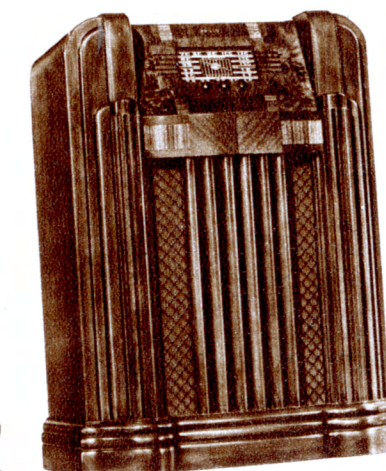
**609P** Philco Photo-Electric Reproducer. 9-tube Phonograph Circuit. Automatic Record Changer. Tilt-Front Cabinet, authentic Hepplewhite design. New Overseas Wave-Band. Built-In American and Overseas Aerial System. 6 Electric Push-Buttons. Covers Standard Broadcasts, American and Foreign Short-Wave, State Police Calls.



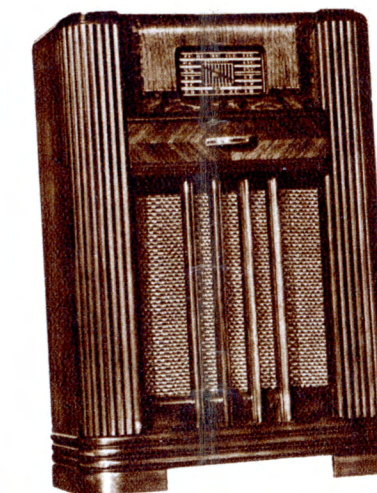
**608P** Philco Photo-Electric Reproducer. 9-tube Phonograph Circuit. Automatic Record Changer. Tilt-Front cabinet. New Overseas Wave-Band. Built-In American and Overseas Aerial System. 6 Electric Push-Buttons. Covers Standard Broadcasts, American and Foreign Short-Wave, State Police Calls.



**607P** Six-tube Phonograph Circuit. Automatic Record Changer. Tilt-Front cabinet. New Overseas Wave-Band. Built-In American and Overseas Aerial System. Two-way switch and Volume Control. Covers Standard Broadcasts, American and Foreign Short-Wave, State Police Calls.



**605P** Six-tube Phonograph Circuit. Automatic Record Changer. Tilt-Front cabinet. Beam Power Audio System. Crystal Pick-up. New Overseas Wave-Band. Built-In American and Overseas Aerial System. Two-way switch and Volume Control. Covers Standard Broadcasts, American and Foreign Short-Wave, State Police Calls.



**604P** Six-tube Phonograph Circuit. Tilt-Front cabinet. Overseas Wave-Band. Built-In American and Overseas Aerial System. Crystal Pick-up. Self-starting, noiseless Phonograph Motor. Two-way switch and Volume Control. Covers Standard, American and Foreign Short-Wave, State Police.



**603P** 6-tube Phonograph Circuit. Crystal Pick-up. Overseas Band. Gets Standard, American and Foreign Short-Wave, State Police.



**602P** 5-tube Phonograph Circuit. Crystal Pick-up. Tone Control for records. Gets Regular Programs, State Police.