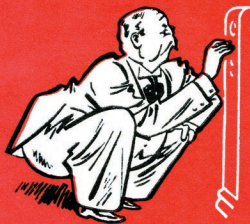


1938 PHILCO RADIO LOG

AMERICAN AND FOREIGN STATIONS



NO SQUAT



NO STOOP



NO SQUINT

REGARDING YOUR NEW RADIO

The modern radio receivers of today are far advanced over their predecessors of a few years ago. They are far more sensitive — they are keyed up for greater distance and range. They require more careful operation if one would secure the greatest amount of pleasure from their ownership. Read carefully and understand everything printed on these pages — it will aid you in the operation of your set.

Since the modern receiver is built to bring in greater distance over the entire Radio Spectrum, it is possible that its sensitivity may be misinterpreted by the new owner, due to the fact that static interference seems more noticeable until you become used to its operation. Do not let this disturb you — but spend a few evenings tuning your set and adjusting its controls until you have become thoroughly familiar with its operation.

Man-made static, such as street cars, motors of all kinds, elevators, washing machines, vacuum cleaners, sewing machines or any appliance, often cause interference, and if you experience trouble due to “noisy reception” it is wise to make a careful check of all appliances in use nearby.

STANDARD BAND TUNING

The following data will help you to operate the radio dial more easily, and help you to GET OUT of the receiver the full radio enjoyment BUILT INTO it at the factory.

THE RADIO SPECTRUM shows the general classification of services to which broadcasting facilities are assigned. Identities of stations in the Broadcast Band “B” appear on the next four pages. Geographical divisions group the stations most likely heard in your community whether on the west coast, central area, or east coast. Enter your exact dial readings for these stations in the blank center column. Fill in the rest of the blank spaces for stations you pick up at intermediate points. Stations with power of T, U, V, W and Z can generally be heard from coast to coast at night, frequently more clearly than stations nearer to you with lower power. Those with H, K, M and O power on same kilocycle with super-power stations operate only in daylight hours.

KILOCYCLES BECOME MEGACYCLES

Note that the spectrum, your log and your dial use a decimal instead of a comma below 1600 and 1650 Kilocycles becomes 1.65 Megacycles.

SHORT WAVE

“V” indicates short wave channels offering Voice entertainment. They are listed on pages 10 to 13. Time of operation is of greatest importance. By ruling out FOUR rows of hour figures on page 10 the chart is converted to your receiving time. The two symbols between each hour line represent one half hour. Pointed up, morning is indicated; down for afternoon. Follow the column for time you are tuning, if station is shown to be operating; to the left you can see whether the program is “daily”; “W & Sat”; or on what schedule. If all three figures of the megacycle number are bold, the reception of the program should be good. If only one is bold, it is likely to be only fair.

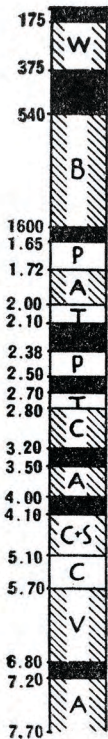
Spots in the spectrum marked “A” are used by some 30,000 amateurs. “C” for Aircraft. “P” for Municipal Police Broadcasts, “S” Ships, “T” Television, “W” for Government Weather and Air Beacon Stations. And on those not marked will be heard phone and commercial stations, etc. mostly in code.

European and other foreign short wave stations operate *only a portion of the time*. Consult the schedule for days and hours.

SHORT WAVE TUNING TIPS

Turn the dial pointer to the approximate setting required. Increase your volume. If your set has tone control turn it to low pitch if atmospheric conditions are noisy. Now tune with extreme care, slowly and evenly. When you locate a station move your tuning knob back and forth until you are satisfied it is the exact point. Re-adjust volume and tone control to suit you. Enter your dial reading for each station. It will be useful for getting the station again and become a reference point for locating stations at adjacent frequencies. Foreign stations sometimes vary slightly from their assigned megacycle and the number you may have recorded.

With slow, careful tuning, faint signals can frequently be developed to great strength. Simply because a station is broadcasting at a given time, do not blame your radio if you are unable to get it. Remember, there are many forces over which man has no control which prevent you from getting reception at times—skip distances—storms—directional antennas of stations, etc.



Revision 56 *Columbia; †NBC Red; ‡NBC Blue; †NBC Red & Blue; ^Mutual

WESTERN		MIDDLE WESTERN		KILO.	Dial No.	CENTRAL		EASTERN	
Wash., Ore., Cal., Utah, Etc.		Minn., Ia., Neb., Mo., Tex., Etc.				Ill., Mich., Ohio, Tenn., Etc.		Mass., N. Y., Pa., N. C., Etc.	
CJRM Moose Jaw, Sask.	O	†KSD-KFUO St. Louis, Mo.	O	540		*WKRC Cincinnati, Ohio.	O	†CFNB Fredericton, N. B.	M
†KOAC Corvallis, Ore.	O	†KTSA San Antonio, Tex.	O	550		WSVA Staunton, Va.	M	†WGR Buffalo, N. Y.	O
†KFYR Bismarck, N. D.	O	†KWTO Springfield, Mo.	O	560		WIND Chicago-Gary.	M	†WDEF Waterbury, Vt.	M
†KLZ Denver, Colo.	O	†KFDN Beaumont, Tex.	O	570		†WIS Columbia, S. C.	O	†WFFL Philadelphia, Pa.	O
†KSFO San Francisco, Cal.	O	†WNAJ Yankton, S. D.	O	580		†WKBK Youngstown, Ohio.	M	†WQAM Miami, Fla.	O
†KVI Tacoma, Wash.	O	†KGGK Ft. Worth, Tex.	M	590		WOSU Columbus, Ohio.	O	†WNNC Asheville, N. C.	O
†KMTR Los Angeles, Cal.	O	†WIBW Topeka, Kas.	O	600		WILL Urbana, Ill.	K	†WMCAN New York (1 WSYR)	Q
†KCUA Edmonton, Alta.	M	†KSCA Manhattan, Kas.	M	610		†WCHS Charleston, W. Va.	M	†WTAG Worcester, Mass.	O
†KMJ Fresno, Cal.	O	†XEPN Pedras Negras, W.	S	620		†WKZO Kalamazoo, Mich.	K	†WDBO Orlando, Fla.	O
†KHQ Spokane, Wash.	O	†WOW Omaha, Neb.	S	630		†CMW Havana, Cuba.	P	†WEEI Boston, Mass.	O
†CJOR Vancouver, B.C.	M	†WMT Cedar Rapids, Ia.	O	640		†CFCF Montreal, Que.	M	†WICC Bridgeport, Conn.	M
†KFSD San Diego, Cal.	M	†WREC Memphis, Tenn.	O	650		†CRCW Windsor, Ont.	M	†WICO Baltimore, Md.	M
†KFRS San Francisco, Cal.	O	†WDAF Kansas City, Mo.	O	660		†CMW Havana, Cuba.	M	†WIP Philadelphia, Pa.	O
†KGV Portland, Ore.	O			670		†WJAY Cleveland, Ohio.	O	†WALB Bangor, Maine	O
†KTAR Phoenix, Ariz.	O			680		†WTMJ Milwaukee, Wis.	O	†WHJB Greensburg, Pa.	K
†CJRC Winnipeg, Man.	M	†KFRU Columbia, Mo.	M	690		†WFLA-†WSUN Florida	O	†CFCY Charlotte, N.C.	O
†KGFJ Pierre, S.D.	J	†WOI Ames, Iowa.	S	700		†WGBF Evansville, Ind.	M	†WPRO Providence, R. I.	M
†KFI Los Angeles, Cal.	W			710		†WMAL Washington, D. C.	K	†WGAN Portland, Me.	M
		†WAAW Omaha, Nebr.	M	720		†WHKC Columbus, Ohio.	M		
				730		†WSM Nashville, Tenn.	W		
		†KFEQ St. Joseph, Mo.	R	740		†XEAL Mexico City, Mex.	O	†WFAF New York City	W
		†XET Monterrey, Mex.	M	750		†WMAQ Chicago, Ill.	W		
				760				†WPTF Raleigh, N. C.	O
†KIRO Seattle, Wash.	O			770		†NAA Arlington, Va.	O	†CFRB Toronto, Ont.	S
†KMPC Beverly Hills, Cal.	M			780		††WLV Cincinnati, Ohio.	Z		
				790		†WGN Chicago, Ill.	W	†WOR Newark, N. J.	W
†CJCA Edmonton, Alta.	O	†KMMJ Clay Center, Neb.	O	800		†CMCL Havana, . . . (CMK)	T	†CKAC Montreal, Que.	S
†KTRB Modesto, Cal.	K			810		†WSB Atlanta, Ga.	W	†WHEB Portsmouth, N. H.	K
†KGU Honolulu, Hawaii.	R	†WEW St. Louis, Mo.	O	820		†WJRR Detroit, Mich.	W		
†KXA Seattle, Wash.	K	†KFBF Lincoln, Nebr.	T	830		†WBBM Chicago, Ill.	W	†WJZ New York (WBAL)	W
†KEOK Tia Juana, Mex.	R			840				†CMBF Havana, Cuba	S
		†KFDY Brookings, S. D.	O	850		†CKSO Sudbury, Ont.	O	†WEAN Providence, R. I.	O
†KGLH Billings, Mont.	O	†XEYZ Mexico City (XEN)	T	860		†WMC Memphis, Tenn.	O	†WTR Norfolk, Va.	O
†KEHE Los Angeles, Cal.	O	†KOAM Pittsburg, Kas.	O	870				†WGY Schenectady, N. Y.	W
†KGO San Francisco, Cal.	T	†WFAA Dallas, (†WBAP)	W	880		HIX Santo Domingo, R.D.	G	†WTBO Cumberland, Md.	K
		†WCCO Minneapolis, Minn	W	890		†WHAS Louisville, Ky.	W	†WNYC New York City.	O
†XEBG Tia Juana, Mex.	O	†KOA Denver, Colo.	W	900		†WRUF Gainesville, Fla.	S	†WHDH Boston, Mass.	O
		†XERA Villa Acuna, Mex.	Z	910				†WEEU Reading, Pa.	O
†CFQC Saskatoon, Sask.	O	†WNL New Orleans, La.	T	920		†WKAR E. Lansing, Mich.	O	†CRCT Toronto, Ont.	S
†KIEV Glendale, Cal.	K	†WHB Kansas City, Mo.	O	930				†WESG Elmira, N.Y.	O
†XEMO Tia Juana Mex.	S			940		†WENR-WLS Chicago.	W	†WABC-WBOQ N. York	W
		†WSUI Iowa City, Ia.	M	950		†CRCO Ottawa, Ont.	O	†WGBI-WQAN Scranton, Pa.	O
†KLX Oakland, Cal.	O	†KFKA Denver (KPOF)	M	960		†WCCO Meridian, Miss.	O	†WPHR Richmond, Va.	M
†KFPY Spokane, Wash.	O	†KFNF Shenandoah (KUSD)	M	970		†WBAA Lafayette, Ind.	W	†WJAR Providence, R. I.	O
†KARK Little Rock, Ark.	M	†XEW Mexico City	W	980		†WMMN Fairmont, W. Va.	M	†WGST Atlanta, Ga.	O
†KGBU Ketchikan, Alaska	O	†WTD Quincy, Ill.	O	990		†WBL Stevens Pt., Wis.	S	†WBN Buffalo, N. Y.	O
†KSEI Pocatello, Idaho.	K	†WKY Okla. City, Okla.	O	1000		†WJAX Jacksonville, Fla.	O	†WELI New Haven, Conn.	M
†KHJ Los Angeles, Cal.	O	†XENT Nueve Laredo, Mex.	X	1010		†CKY Winnipeg, Man.	U	†CRCM Montreal, Que.	S
†CJAT Trail, B.C.	O	†KPRC Houston, Texas	O	1020		†WJWJ Detroit, Mich.	S	†WROL Boston, Mass.	M
†KOMO Seattle, Wash.	O	†KFEL KVOZ Denver.	M	1030		†WAAF Chicago, Ill.	S	†WRAX-WFEN Philadelphia	M
		†KMA Shenandoah, Ia.	O	1040		†CMX Havana.	T	†CHNS Halifax, N.S.	M
†KROW Oakland, Cal.	O	†WDAY Fargo, N. D.	O	1050		†WBR Birmingham, Ala.	O	†WDBJ Roanoke, Va.	O
†KOIN Portland, Ore.	O	†WHA Madison, Wis.	S			†WAVE Louisville, Ky.	O	†WCSH Portland, Maine	O
†KFWB Hollywood, Cal.	O	†KMBC Kansas City, Mo.	O			†XFO Mexico City, Mex.	S	†WAAT Jersey City, N. J.	M
		†XEAW Reynosa, Tams.	W			†WHAL Saginaw, Mich.	M	†WRC Washington, D.C.	O
†KJR Seattle, Wash.	S					†CMCD Havana, Cuba.	N	†CHNC New Carlisle, Que.	O
		†XEAJ Nogales, Mexico.	N					†WBG Glenside, Pa.	H
†KFVD Los Angeles, Cal.	O	†WHO Des Moines, Iowa.	W			†WCFL Chicago, Ill.	S	†KDKA Pittsburgh, Pa.	W
†CKCK-CHWC Regina, Sk.	M	†KGGF Coffeyville, Kas.	O					†WBZ-WBZA Boston.	W
†KQW San Jose, Cal.	O	†WNAJ Norman, Okla.	O			†WNOX Knoxville, Tenn.	O	†WHN New York City.	O
		†XEJ Juarez, Mex.	C			†WDZ Tuscola Ill.	K	†KYW Philadelphia, Pa.	T
†CFCN Calgary, Alta.	T	†XEB Mexico City, Mex.	T			†CKLW Windsor-Detroit.	S	†CMCY Havana, Cuba.	S
†KWJJ Portland, Ore.	M	†KRLD Dallas, Tex.	T					†WTIC Hartford, Conn.	W
†KYOS Merced, Cal.	K					†WEAU Eau Claire, Wis.	O	†CRCK Quebec Que.	O
†KNX Los Angeles, Cal.	W	†KFBI Abilene, Kas.	S			†WVGA Indianapolis, Ind.	O		

WESTERN		MIDDLE WESTERN		KILO	Dial No.	CENTRAL		EASTERN	
WJAG Norfolk, Nebr. O	† KTHS Hot Springs, Ark. T	1060				XEA Guadalajara, Mex. M		† WBAL Baltimore, Md. T	
KJBS San Francisco, Cal. M	WCAZ Carthage, Ill. H	1070				WTAM Cleveland, Ohio. W			
		1080				WBBI Chicago, Ill. (WCBD) S		*WBT Charlotte, N. C. W	
XEAO Tia Juana, Mex. O	*KMOX St. Louis, Mo. W	1090							
CRVU Vancouver, B. C. S	*KWKH Shreveport, La. T	1100						WLWL New York City S	
† KGDM Stockton, Cal. S	KSOO Sioux Falls, S. D. R	1110				XELO Piedras Negras, Mex. W		*WPG Atlantic City, N. J. S	
	WTAW College Station, Tex. M	1120				*WISN Milwaukee, Wis. K		*WRVA Richmond, Va. S	
KFIO Spokane, Wash. (KRSC) H		1130				WJBO Baton Rouge, La. M		WCOP Boston, Mass. S	
KFSG-KRKH Los Angeles M	† KVOO Tulsa, Okla. V	1140				WJJD Chicago, Ill. U		WDEL Wilmington, Del. K	
*KSL Salt Lake City, Utah. W	XEH Monterey, Mex. K	1150				WAPI Birmingham, Ala. S		WOV New York City O	
	XED Guadalajara, Mex. M	1160						*WSPR Springfield, Mass. M	
		1170				WOWO Ft. Wayne, Ind. T		† WHAM Rochester, N. Y. W	
† KEX Portland, Ore. S	WDGY Minneapolis, Minn. O	1180						*WVVA Wheeling, W. Va. S	
KOB Albuquerque, N. M. T	† WDOI San Antonio, Tex. W	1190				WMAZ Macon, Ga. O		*WCAU Philadelphia, Pa. W	
KTVC Visalia, Cal. K	KBIM-KGHI-KFJJ-KGEK KFJB-KMLB-WBNO-WJBW KWNO-KGDE-KATE-WIL KADA-WBBZ-WCAT-WDSM	1200				WSAZ Huntington, W. Va. O		WATR Waterbury, Conn. H	
KSUN-KGFI-KVCV-KVEC KWG-KFXD-KDNC-KOOS KVOS-KELO	KFPW-WBFG-KGLO-KIUL KANS-WMFG-WMLN-WGCM KFV5-KMFR-KDLR-KVSO KASA-KWTN-KOCA-WIBU	1210				WBHP-WJRD-WJBC-WJBL WWAE-WFAM-WMPC-WHBC WCPO-WHBY-WCLO		*WTHH † WJNO-WRBL-WOYX *WABI-WEX-WMR-LWALS WFTC-WEST-WKBQ-WNRI WAIM-WCAZ-WJVA	
	† WREN-KFKA Kansas City O	1220				WJBY-WCRW-WEDC-WSEC WEBQ-WTAX-WHBU-WJIM WJWJ-WCOL-WBLY-WALR WSIX-WOMT		WFOY-WPAX-WJEJ-WBRE WSNJ-WGNY-WGBB-WJTN WSAY-WFAS-WSOC-WKOK WBAE-WBEL-WMBG	
KTW Seattle. (KWSC) O	†KGBZ Springfield, Mo. M	1230				*WDAE Tampa, Fla. O		† WCAE Pittsburgh (WCAD) O	
CJOC Lethbridge, Alta. H	KGGM Albuquerque, N.M. M	1240				*WFBM Indianapolis, Ind. O		† WNAK Boston, Mass. O	
† KYA San Francisco, Cal. O	KLPM Minot, N. D. K	1250				*WXYZ Detroit, Mich. M		WOL Washington, D.C. O	
KGCU Mandan No. Dakota K	† KTAT Ft. Worth, Tex. M	1260				XEKL Leon, Mex. M		CJCB Sydney, N.S. O	
KTFI Twin Falls, Idaho. M	WLB†WTCN Minneapolis M	1270				WDSU New Orleans, La. O		WKAQ San Juan, P. R. O	
KIT Yakima, Wash. K	WAL Northfield, Minn. O	1280				WHSI Dayton, O. O		WNEW New York (WHBI) O	
KFOK Long Beach, Cal. O	† KOIL Omaha, Neb. O	1290				*WTCO Savannah, Ga. O		WAIR Winston-Salem, N.C. K	
*KGVO Missoula, Mont. O	KPAC Port Arthur (KRGV). O					WASH; WOOD G. Rds. M		WNBX Springfield, Vt. M	
KVOA Tucson, Arizona O	KWLC-KGCA Decatur, Ia H					*WJDX Jackson, Miss. M		† WBR Baltimore, Md. M	
KHSL Ohio, Cal. K	*KVOX Colo. Springs, Colo. O					*WDDO Chattanooga, Tenn. O		*WORC Worcester, Mass. M	
*KOL Seattle, Wash. O	† WIBA Madison, Wis. O							WTNJ † WNBK † WCAP † NJ M	
*KFBF Great Falls, Mont. O	WBEU Dallas, Tex. M							*WJAS Pittsburgh, Pa. M	
KLS Oakland, Cal. K	† WBCB Duluth, Minn. O							WNLN San Juan, P. R. M	
† KDYL Salt Lake City O	† KTRH Houston, Tex. O								
KALE Portland, Ore. M	WHBL Sheboygan, Wis. M	1300				WFBG Greenville, S.C. O		WBBR-WFAB New York. O	
KFAC Los Angeles, Cal. O	*KHFH Wichita, Kas. M	1310				WIOD-WMBF Miami, Fla. O		WVED-WHAZ New York. O	
KINY-KCRJ-KSRO-KHUB KGEZ-KRQA-KMED-KSJB KXRO-KIT-KGFW-KRMC	WSGN-KCKN-KVOL-KRMD KVOX-KROK-WAML-KWOS KPDN-KRRV-KFXR-KAND KFPL-KTSM-WDAH-KFYO	1320				WCLS-WTRC-WLBC-WBOW WCMI†WDFD-WBEO-WEXL WTSJ-WROL-WEMP-WGH		*WFL † WLAK † WTAL † WNBH *WLNH-WMBO-WBR-WHFF *WSJS-WFBG-WSAJ-WJAC WHAT-WTEL-WRAW-WBRE	
KID Idaho Falls, Idaho. M	† KRNT Des Moines, Iowa. O	1330				*WABC Akron, Ohio O		WORK York, Pa. O	
*KQMB Honolulu O	KGHF Pueblo, Colo. M	1340				†WSMB New Orleans, La. O			
*KMO Tacoma, Wash. O	KRSJ Sioux City, Ia. K	1350				WTAQ Green Bay, Wis. O		*WDRG Hartford, Conn. O	
*KGB San Diego, Cal. O	KSCS (Corpus Christi), Tex. K	1360				† WTAI Cincinnati, Ohio O		† WFEE Manchester, N.H. M	
† KGIR Butte, Mont. M	KGDY Huron, S. D. K	1370				*WSPD Toledo, Ohio. O		WCOA Pensacola, Fla. O	
KIDO Boise, Idaho. O	KGNO Dodge City Kas. K	1380				WMBG Richmond, Va. M		WBNX New York (WAWZ) K	
KGER Long Beach, Cal. O	† KKWK St. Louis, Mo. O	1390				WGES Chicago, Ill. M		*WFBK Syracuse, N. Y. O	
KGAR; KERN-KRE-KICA KGFL-KAST-KSIU-KQBH KRKO-KEEN-KUJ-KWYO KIUP-KOKO-KGKL	*KCRK Enid, Okla. K	1400				*WSBT South Bend, Ind. M		WCSC Charleston, S. C. M	
*KOH Reno, Nev. M	WQBC Vicksburg, Miss. O	1410				WMFO-WAGF-WDWS-WEQA WGL-WGRC-WHDF-WIEM WPAW-WHBQ-WRJR-WSAU		*WMBR-WATI † WRDO-WCBM *WLLH-WABY-WBNY-WSVS WMLF-WDAS-WRAK-WPRA WQDM-WBTM-WBLK	
KRLC Lewiston, Ida. K	KELD-KONQ-KTEM-KFGQ WOC-KVGB-WMIN-WHLE WFOR-KCMO†KTOK-KFJZ KLUF-KFRO-KMAC	1420				WSMK Dayton, Ohio. J		WQBC New Britain, Conn. K	
*KOY Phoenix, Ariz. O	WKBH La Crosse, Wis. O	1430				*WALA Mobile Ala. M		KQV Pittsburgh, Pa. M	
† KLO Ogden, Utah (KHBC) M	*KLRA Little Rock, Ark. O	1440				*WHK Cleveland, Ohio O		WQDM St Albans, Vt. M	
KMED Medford, Ore. K	† KTUL Tulsa Okla. M	1450				† WIRE Indianapolis, Ind. O		WARD-WFVW-WBBC NYM	
† KMCA Amarillo, Tex. O	KFJM Grand Forks, N.D. M	1460				WBCM Bay City, Mich. O		*WAAB Boston, Mass. M	
KUMA-KGCC-KRLC-KORE KBPS-KYL-KUB-KGIW KIDW-KWBG-KRLH	WROK Rockford, Ill. M	1470				*WSPA Montgomery, Ala. M		WHIS Bluefield, W. Va. K	
† KECA Los Angeles, Cal. O	KCMC-KALE-WJBO-WNBH *KGFJ-KABR-KNEC-KFTJ KIUN-KABC-WACO-KFI	1480				WMSD-WHFC-WCBS-WLAP WPAD-WELL-WMBC-WJMS WAPD†WPAP		WILM-WMFI-WGFC-WAGM *WMAZ-WJBR-WEEP-WLEU WASL-WMBS-WPRD-WCHV	
KDFN Casper, Wyo. M	† KAKO Des Moines, Ia. K	1490				*WBNS Columbus, Ohio. M		*WHCC Rochester (*WOKO) M	
KIEM Eureka, Cal. M	KGNF No. Platte, Neb. K					WNBK Memphis, Tenn. M		*WHP Harrisburg, Pa. M	
KGCX Wolf Point, Mont. O	*WMBD Peoria, Ill. M					*WBI Greensboro, N. C. M		WCSA-WSAN Allentown. M	
	KXYZ Houston, Tex. M					† WGAR Cleveland, Ohio. M		WSAR Fall River, Mass. O	
	† KTBS Shreveport, La. O					WTFI Atlanta Ga. M		WHOM Jersey City, N. J. K	
	† KSTP St. Paul-Minn polls. T							*WJSV Washington, D.C. T	
		1460				*WLAC Nashville, Tenn. S		*WKBW Buffalo, . N. Y. S	
	*KOMA Oklahoma City, Ok S	1470				WHIP Hammond, Ind. S		WNLC-WRDW-WKEU-WRGA	
		1480				† WCKY Covington, Ky. S		WMEX†WBNF-WCWN-WMBQ	
	KOTN†WKBK-WTMV-KSJS KPLC-KDAL-KGKY-KBIX *KNO-W-KBST-KNEL-KGJ KROD-KPLT-KGKB-KXBY	1490						WVRL-WDNC-WGAL-WWSW WSYB-WRTD	
	KXBY Kansas City, Mo. O	1500						CFRC Kingston, Ont. H	
		1510						*WBRY Waterbury, Conn. O	
		1520						WQXR Long Island Cy, N. Y. O	
*KPMC Bakersfield, Cal. O		1530							
		1540							
		1550							

NO SQUAT



NO STOOP

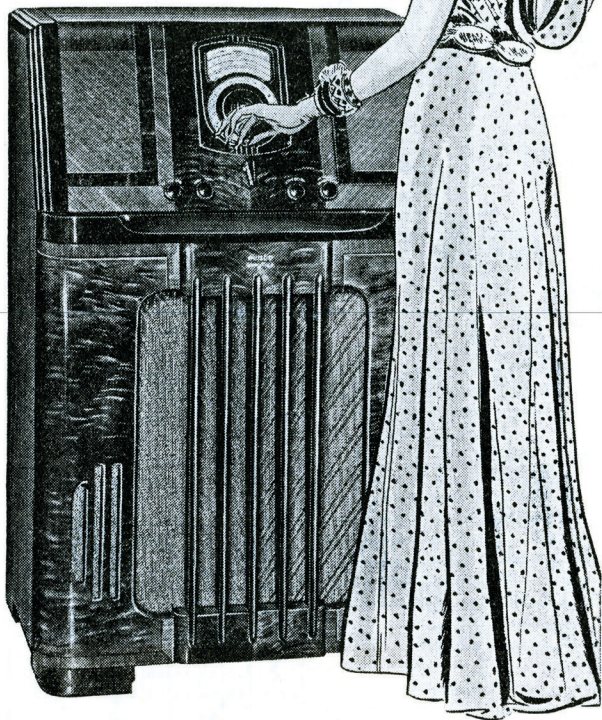
NO SQUINT



With the
New 1938
AUTOMATIC
TUNING
PHILCO

NOW . . . for only a few dollars down . . . you can own an entirely new kind of radio . . . the 1938 Philco Double-X! Built for your convenience, with an **INCLINED CONTROL PANEL** . . . **INCLINED** for tuning with ease and grace, whether you're sitting or standing!

One glance, and you spot your favorite stations . . . one motion, and Philco Automatic Tuning gets them perfectly! Tone perfection made possible by the famous **Inclined Sounding Board** . . . overseas reception such as only the Philco Foreign Tuning System can give . . . cabinets of superb beauty! Seven big-value Double-X Philcos from which to choose!



Come in and tune
one of the new
1938 Double-X
PHILCOS

EASY TERMS — BIG TRADE-IN ALLOWANCE

If you live in Central Time Zone, rule out the other FOUR rows of hour figures. Copy those for your zone for some lines on next pages. Follow column for hour you tune. If symbol appears glance left to learn days station operates. See if three digits in megacycle number are heavy black, denoting it is generally being heard well. Two, one, or none black require comparative care. "A" at left marks Amateurs, "S" Ships, "C" airCraFt.

AM-▲ PM-▼ Both-◆

E D S T	1	2	3	4	5	6	7	8	9	10	11	12	1	2	3	4	5	6	7	8	9	10	11	12	
Eastern(CD)	12	1	2	3	4	5	6	7	8	9	10	11	12	1	2	3	4	5	6	7	8	9	10	11	12
Central	11	12	1	2	3	4	5	6	7	8	9	10	11	12	1	2	3	4	5	6	7	8	9	10	11
Mountain	10	11	12	1	2	3	4	5	6	7	8	9	10	11	12	1	2	3	4	5	6	7	8	9	10
Pacific	9	10	11	12	1	2	3	4	5	6	7	8	9	10	11	12	1	2	3	4	5	6	7	8	9

NOTES

Meg.	Call	Place	When	Mtrs.	1	2	3	4	5	6	7	8	9	10	11	12
4.79	HJ2ABC	Cucuta, Col.	ex.Su.	62.60							▼	▼	▼	▼	▼	▼
5.74	TGS	GuatemalaCy.	W.Th.&Su.	52.26							▼	▼	▼	▼	▼	▼
5.76	YNOP	Managua,Nic.	ex.Su.	52.08							▼	▼	▼	▼	▼	▼
5.78	OAX4D	Lima, Peru	W&Sat	51.90							▼	▼	▼	▼	▼	▼
5.80	YV5RC	Caracas,Venez.	Daily	51.72							▼	▼	▼	▼	▼	▼
5.83	T1GPH	SanJose,C.R.	ex.Su.	51.46							▼	▼	▼	▼	▼	▼
5.85	YV1RB	Maracaibo,Ven.	ex.Su	51.28	▼	▼					▼	▼	▼	▼	▼	▼
5.87	HRN	Tegucigalpa,Hon.	Daily	51.11							▼	▼	▼	▼	▼	▼
5.90	T1LS	San Jose, R.D.	ex.Su.	50.80							▼	▼	▼	▼	▼	▼
5.90	YV3RA	Barquisimeto,Ven.	ex.Su.	50.80							▼	▼	▼	▼	▼	▼
5.92	YV4RH	Valencia,Ven.	ex.Su.	50.70							▼	▼	▼	▼	▼	▼
5.93	HH2S	Port-au-Pr.,Haiti	ex. Su.	50.63							▼	▼	▼	▼	▼	▼
5.94	TG2X	Guatamala City	MWSa	50.51							▼	▼	▼	▼	▼	▼
5.95	HJN	Bogota, Col.	ex. Su.	50.42							▼	▼	▼	▼	▼	▼
5.97	HJ4ABD	Medellin,Col.	ex.Su.	50.25							▼	▼	▼	▼	▼	▼
6.00	XEBT	Mexico City	Daily	49.97	▲	▲					▼	▼	▼	▼	▼	▼
6.00	HP5K	Colon, Panama	ex.Su.	49.96							▼	▼	▼	▼	▼	▼
6.01	COCO	Havana,Cuba	Daily	49.92							▼	▼	▼	▼	▼	▼
6.01	HJ3ABH	Bogota, Col.	ex.Su.	49.92							▼	▼	▼	▼	▼	▼
6.02	DJC	Berlin, Ger.	Daily	49.83	▼	▼	▼	▼	▼	▼	▼	▼	▼	▼	▼	▼
6.03	HP5B	Panama City	Daily	49.75							▼	▼	▼	▼	▼	▼
6.03	HJ4ABP	Medellin.Col.	ex.Su.	49.73							▼	▼	▼	▼	▼	▼
6.04	W1XAL	Boston,Mass.	M&F	49.67							▼	▼	▼	▼	▼	▼
6.04	HJ1ABG	Barranquilla,Col.	ex.Su.	49.62							▼	▼	▼	▼	▼	▼
6.05	HJ3ABD	Bogota,Col.	ex.Su.	44.59							▼	▼	▼	▼	▼	▼
6.06	WSXAL	Cincinnati	Daily	49.50	◆	◆	▼	▼	▼	▼	▼	▼	▼	▼	▼	▼
6.06	W3XAU	Philadelphia	Daily	49.50	◆	◆	▼	▼	▼	▼	▼	▼	▼	▼	▼	▼
6.07	CFRX	Toronto, Ont.	Daily	49.41							▼	▼	▼	▼	▼	▼

6.08	W9XAA	Chicago	MW&Sa	49.34							▼	▼	▼	▼	▼	▼
6.10	W9XF	Chicago	TTF&Sn	49.18	▲	▲					▼	▼	▼	▼	▼	▼
6.10	W3XAL	Boundbr'k,N.J.	Daily	49.18							▼	▼	▼	▼	▼	▼
6.11	HJ4ABB	Manizales,Col.	ex.Su	49.08							▼	▼	▼	▼	▼	▼
6.11	HJ1ABB	Barranquilla,Col.	ex.Su	49.08							▼	▼	▼	▼	▼	▼
6.13	VE9HX	Halifax, N. S.	Daily	48.92							▼	▼	▼	▼	▼	▼
6.13	COCD	Havana,Cuba	Daily	48.92							▼	▼	▼	▼	▼	▼
6.14	W8XK	Pittsburgh	Daily	48.86							▼	▼	▼	▼	▼	▼
6.15	H15N	Moca City R.D.	ex.Su.	48.78							▼	▼	▼	▼	▼	▼
6.15	CJRO	Winnipeg,Man.	Daily	48.78	▲	▲					▼	▼	▼	▼	▼	▼
6.15	YV5RD	Caracas,Ven.	Daily	48.78	▲	▲					▼	▼	▼	▼	▼	▼
6.24	HRD	LaCeiba, Honduras	ex.Su.	48.11							▼	▼	▼	▼	▼	▼
6.24	H1N	Trujillo, R.D.	ex.Su.	47.99							▼	▼	▼	▼	▼	▼
6.26	OAX4G	Lima, Peru	Daily	47.86							▼	▼	▼	▼	▼	▼
6.27	YV5RP	Caracas,Ven.	ex.Su.	47.80							▼	▼	▼	▼	▼	▼
6.30	YV4RD	Maracay, Venez	ex.Su.	47.62							▼	▼	▼	▼	▼	▼
6.31	H1Z	Trujillo, R.D.	ex.Su	47.50							▼	▼	▼	▼	▼	▼
6.34	H1IX	Trujillo, R.D.	Tu.&Fr.	47.32							▼	▼	▼	▼	▼	▼
6.37	YV1RH	Maracaibo,Ven.	Daily	47.10							▼	▼	▼	▼	▼	▼
6.40	YV5RH	Caracas, Venez	ex.Su.	46.88							▼	▼	▼	▼	▼	▼
6.41	TiPG	San Jose, C.R.	Daily	46.80							▼	▼	▼	▼	▼	▼
6.52	YV4RB	Valencia,Venez.	Daily	46.01							▼	▼	▼	▼	▼	▼
6.62	PRADO	Riobamba,Ecu.	Th.	45.31							▼	▼	▼	▼	▼	▼
6.63	H1T	Trujillo, R.D.	ex.Su.	45.25							▼	▼	▼	▼	▼	▼
6.66	HC2RL	Guayaquil,Ec.	Tu	45.00							▼	▼	▼	▼	▼	▼
6.68	T1EP	SanJose,C.R.	ex.Su.	44.88							▼	▼	▼	▼	▼	▼
6.78	H1H	San Pedro, R.D.	ex.Su.	44.07							▼	▼	▼	▼	▼	▼
7.80	HBP	Geneva,Switz.	Sat.	38.47							▼	▼	▼	▼	▼	▼
8.25	HC2CW	Guayaquil,Ecu.	ex.Su.	36.46							▼	▼	▼	▼	▼	▼
9.12	HAT-4	Budapest,Hung.	Su&W	32.81							▼	▼	▼	▼	▼	▼
9.36	OAX4J	Lima, Peru	Daily	32.05							▼	▼	▼	▼	▼	▼
9.43	COCH	Havana, Cuba	Irr.	31.88							▼	▼	▼	▼	▼	▼
9.45	TGWA	Guatemala City	Daily	31.80							▼	▼	▼	▼	▼	▼
9.49	EAQ-2	Madrid, Spain	Daily	31.60							▼	▼	▼	▼	▼	▼
9.50	PRF5	Rio de Janeiro	ex.Su	31.58							▼	▼	▼	▼	▼	▼
9.50	VK3ME	Melbourne,Aus.	M toSa	31.58							▼	▼	▼	▼	▼	▼

Copy hour numbers from previous page

9.50	HJ1ABE	Cartagena,Col.ex.Su.	31.58
9.51	HJU	Buenaventura,Col. MW&F	31.55
9.51	GSB	London, Eng. Daily	31.55
9.52	HJ4ABH	Armenia,Col. ex.Su.	31.51
9.52	ZBW-3	HongHong,China Daily	31.49
9.53	W2XAF	Schenectady Daily	31.48
9.54	DJN	Berlin, Ger. Daily	31.45
9.56	DJA	Berlin, Ger. Daily	31.38
9.57	W1XK	Springfield,Mass. Daily	31.36
9.58	VK3LR	Melbourne,Aus. Daily	31.32
9.58	GSC	London, Eng. Daily	31.30
9.59	W3XAU	Philadelphia Daily	31.28
9.59	PCJ	Eindhoven,Holland W & Su	31.28
9.59	VK2ME	Sydney,Aus. Sun	31.28
9.60	HP5J	Panama City Daily	31.25
9.60	RAN	Moscow, USSR Daily	31.25
9.61	HJ1ABP	Cartagena, Col. ex. Su.	31.20
9.63	I 2RO3	Rome,Italy Daily	31.15
9.64	HH3W	Port-au-Pr., Haiti ex.Su.	31.01
9.65	CT1AA	Lisbon,Port. T,T&Sa	31.01
9.66	LRX	BuenosAires,Arg.Daily	31.02
9.86	EAQ	Madrid,Spain Daily	30.44
9.94	CSW	Lisbon, Port. Daily	30.21
10.33	ORK	Brussels, Belg. Daily	29.04
10.35	LSX	BuenosAires,Arg. Daily	28.98
10.66	JVN	Nazaki, Japan Daily	28.13
11.00	PLP	Bandoeng, Java Daily	27.27
11.72	TPA 4	Paris, France Daily	25.60
11.72	CJRX	Winnipeg,Man. Daily	25.60
11.75	GSD	London, Eng. Daily	25.53
11.77	DJD	Berlin, Ger. Daily	25.49
11.79	W1XAL	Boston,Mass. Daily	25.45
11.80	JZJ	Tokyo, Japan Daily	25.41
11.81	I 2RO 4	Rome, Italy Daily	25.40
11.83	W2XE	Wayne,N.J. Daily	25.36

11.84	OLR4A	Prague,Czech Daily	25.34
11.87	W8XK	Pittsburgh Daily	25.27
11.88	TPA 3	Paris, France Daily	25.23
12.06	RNE	Moscow,USSR W&Su.	24.88
S 13.63	SPW	Warsaw,Pol. MW&F	22.01
A 14.91	LZA	Sofia,Bulgaria Daily	20.11
15.04	RKI	Moscow,USSR Daily	19.95
15.11	DJL	Berlin, Ger. Daily	19.86
15.12	HVJ	VaticanCity,It. ex.Su	19.84
15.14	GSF	London, Eng. Daily	19.82
15.15	YDC	Sourabaya,Java Daily	19.81
15.18	GSO	London, Eng. Daily	19.75
15.20	DJB	Berlin, Ger. Daily	19.73
15.21	W8XK	Pittsburgh,Pa. Daily	19.72
15.24	TPA 2	Paris, France Daily	19.68
15.26	GSJ	London, Eng. Daily	19.66
15.27	W2XE	Wayne, N.J. Daily	19.65
15.28	DJQ	Berlin, Ger. Daily	19.64
15.29	LRU	Buenos Aires,Arg. Daily	19.62
15.31	GSP	London, Eng. Daily	19.60
15.33	W2XAD	Schenectady Daily	19.56
15.34	DJR	Berlin, Ger. Daily	19.56
15.37	HAS 3	Budapest,Hung. Su	19.52
S 17.76	DJE	Berlin, Ger. Daily	16.89
17.77	PHI	Huisen,Hol.,ex.Tu&W	16.88
17.78	W3XAL	Boundbrook,NJ. Daily	16.87
17.79	GSG	London,Eng. Daily	16.86
21.47	GSH	London, Eng. Daily	13.97
21.52	W2XE	New York City. Daily	13.94
21.53	GSJ	London, Eng. Daily	13.93
21.54	W8XK	Pittsburgh,Pa. Daily	13.92

Twenty-six issues of the Chicago Short Wave Radio Club's splendid bi-weekly bulletins will be mailed during one year for \$1.00. They will keep you up-to-the-minute with all important shortwave information and enable you to derive the full enjoyment your receiver provides. Ten or more revisions of this Radio Log, during 2 1/2 years, are mailed to subscribers for \$1.00. Two dollars, for both services may be sent to Haynes' Radio Log, 161 West Harrison St., Chicago.

ALASKA
Ketchikan KGBU 900 O

ALABAMA
Birmingham †WAPI 1140 S
*WBRC 930 O
Mobile †WALA 1380 M
Montgomery †WSFA 1410 M

ARIZONA
Phoenix †KFOY 1390 O
†KTAR 620 O
Tucson KVOA 1260 O

ARKANSAS
Hot Springs †KTHS 1060 T
Little Rock †KLR 1390 O

CALIFORNIA
Bakersfield †KPMC 1550 O
Fresno †KFMJ 580 O
Long Beach KFOX 1250 O
KGER 1360 O
Los Angeles KECA 1430 O
KEHE 780 O KFAC 1300 O
†KFI 640 W KFVD 1000 O
KFWB 950 O †KHJ 900 O
KMTR 570 O †KNX 1050 W
KRKD 1120 M
Oakland KLS 880 O
KROW 930 O
Sacramento †KFBK 1490 S
S. Diego KGB 1330 KFSD 600 O
San Francisco †KFRC 610 O
†KGO 790 T †KPO 680 W
†KSF 560 O KYA 1230 O
San Jose KQW 1010 O

COLORADO
Colorado Springs †KVOR 1270 O
Denver †KLZ 560 O
†KOA 830 W †KPEL 920 M
Pueblo KGHF 11320 M

CONNECTICUT
Bridgeport †WIOC 600 M
Hartford †WTIC 1040 W
†WDRG 1320 O
Waterbury †WBRY 1530 O

DISTRICT OF COLUMBIA
Washington †WJWS 1460 T
*WOL 1230 O †WRC 950 M

FLORIDA
Clearwater †WFLA 620 O
Gainesville WRUF 830 S
Jacksonville †WJAX 900 O
Miami †WIOD 1300 O
*WQAM 560 O
Orlando †WDBO 530 O

MAINE
Bangor †WLBZ 620 O
Portland †WCSH 940 O

MARYLAND
Baltimore †WBAL 1060 T
†WMBL 760 R †WCAC 600 M

MASSACHUSETTS
Boston †WVJR 990 W
†WVX 6:04-11:59
*WEEL 510 O †WHDH 830 O
WORLD 920 M †WNAIC 1230 O
Fall River †WSAR 1450 O
Worcester †WTAG 580 O

MICHIGAN
Bay City WBCM 1410 O
Detroit †WJR 750 W
†WJL 920 W †WXYZ 1240 O
Grand Rapids †WOOD 1270 M
Lansing WKAR 850 O

MINNESOTA
Duluth †WEEB 1290 O
Minneapolis †WCCO 810 W
WDG 1180 O WLB 1250 O
St Paul †KSTP 1460 V

MISSISSIPPI
Jackson †WJXD 1270 O
Vicksburg WQBC 1360 O

MISSOURI
Kansas City †KMBC 950 O
†WDAF 610 O KXBY 1530 O
Springfield †KWTO 560 O
St. Louis †KMOMO 1090 W
†KTD 550 O †KWK 1350 O

MONTANA
Billings †KGHL 780 O
Butte †KGR 1340 O
Great Falls †KFBB 1280 O
Missoula †KGO 1260 O
Wolf Point KGGK 1450 O

NEBRASKA
Lincoln †KEAB 770 T
North Platte KGNF 1430 O
Omaha WAAW 660 M
†WOW 590 S †KOLL 1260 O

NEVADA
Reno †KOH 1380 M

NEW HAMPSHIRE
Manchester †WPEA 1340 M

NEW JERSEY
Atlantic City †WPG 1100 S
Newark †WOR 710 W

PENNSYLVANIA (Cont.)
Pittsburgh †KDKA 980 W
†WXXK 6:14-11:37-15.21-21.54
†WCAE 1220 O †WJAS 1290 O
Reading WBEU 830 O
York WORK 1320 O

PUERTO RICO
WKAQ San Juan 1240 O

RHODE ISLAND
Providence †WEAN 780 O
†WJAR 890 M †WPRO 630 O

SOUTH CAROLINA
Columbia †WIS 560 O
Greenville †WFBC 1300 O

SOUTH DAKOTA
Brookings KFDY 780 O
Sioux Falls KXMO 1110 R
Yankton †WMAX 570 O

TENNESSEE
Chattanooga †WDOD 1280 O
Knoxville †WNOX 1010 O
Memphis †WMC 780 O
WNR 1430 M †WREC 600 O
Nashville †WLAC 1470 S
*WSM 650 W

TEXAS
Amarillo KGNK 1410 O
Beaumont KFDM 560 O
Dallas †KRLD 1040 T
†WFAA 800 W WRR 1280 M
Ft. Worth †WBAP 800 W
†KTAT 1240 O
Houston †KPRC 920 O
*KTRH 1290 O KXYZ 1440 O
San Antonio †KTTSA 550 O
†WQAI 1190 W

UTAH
Ogden †KLO 1400 M
Salt Lake City †KDYL 1290 O
*KSL 1130 W

VERMONT
St. Albans WQDM 1390 O
Waterbury WDEV 550 M

VIRGINIA
Norfolk †WTAR 780 M
Richmond †WRVA 1110 S
Roanoke †WDBJ 930 O
Staunton WSA 550 M

SASKATCHEWAN
Moscow Jw CJRM 540 O
Regina CHWC-CKCK 1010 M
Saskatoon CFQC 840 O

ARGENTINA
Buenos Aires LSX 10.35
LRU 15.29 LRX 9.66

AUSTRALIA
Melbourne VK3ME 9.50
3LR 9.58
Sydney VK2ME 9.59

BRAZIL
Rio de Janeiro PRF5 9.50

BULGARIA
Sofia LZ 14.87

CHILI
Santiago CEC 10.67

COLOMBIA
Barranquilla HJ1AB- 6.04-6.11
Bogota HJN 5.95
HJ3AB- 6.01-6.05-6.12-6.07
Cali HJ5ABD 6.08
Cartagena HJ1AB- 9.50-9.61
Ibaque HJ4AB 6.09
Manizales HJ4AB 6.11
Medellin HJ4AB- 6.03-6.10-6.14

COSTA RICA
San Jose TIGPH 5.83
TIPG 6.41 TIEP 6.68

CUBA
Havana CMBC 630 O
CMCY 1030 O CMK 730 M
CMW 600 M CMX 920 P
COCD 6.13 COCH 9.43

ECUADOR
Guayaquil HC2CR 8.25
HC2RL 6.66
Riobamba PRADO 6.62

ENGLAND
London GS- 9.51-9.58-11.75-
15.14-15.31-17.79-21.47

FRANCE
Paris TPA- 11.72-11.88-15.24

GERMANY
Berlin DJ- 6.02-9.54-9.56-
1.77-15.11-15.20-15.28-17.76

HAITI
Port au Prince HHK 920 O
HH2S 5.91 HH3W 9.64

Pensacola †WCOA 1340 M
Tampa †WDAE 1220 O

GEORGIA
Atlanta †WGST 890 O
†WSB 740 W †WFI 1450 M
Macon WMAZ 1180 O
Savannah †WTOC 1260 O

HAWAII
Honolulu †KGU 750 R
*KGMB 1320 O

IDAHO
Boise KIDO 1350 O

ILLINOIS
Chicago †WBBM 770 W
†WCFL 970 S †W9XAA 6.08
†WENR 870 W †W9XF 6.10
†WGN 720 W †WLS 870 W
†WMAQ 670 W WMBI 1080 S
Peoria †WMBD 1440 M
Rockford WROK 1410 M

INDIANA
Evansville WGBF 630 M
Ft. Wayne †WOWO 1160 T
Gary WIND 560 O
Hammond WHIP 1480 S
Indianapolis †WFBM 1230 O
†WIRE 1400 O WGVA 1050 O
Lafayette WBAA 890 O

IOWA
Ames WOI 640 S
Cedar Rapids †WMT 600 O
Des Moines †KRNT 1320 O
†KSO 1430 M †WHO 1000 W
Sioux City †KSCJ 1330 O

KANSAS
Abilene KFBI 1050 S
Coffeyville KGGF 1010 O
Lawrence KFKU 1200 O
Pittsburgh KOAM 790 O
Topeka †WIBW 580 O
Wichita †KFH 1300 O

KENTUCKY
Covington †WCYK 1490 T
Louisville †WAVE 940 O
*WHAS 820 W

LOUISIANA
New Orleans WDSU 1250 O
†WSMB 1320 M †WWL 850 T
Shreveport †TBS 1450 O
KWKH 1100 O

NEW MEXICO
Albuquerque KOB 1180 S

NEW YORK
Buffalo †WBEN 900 O
*WGR 550 O †WKBW 1480 S
Elmira †WESG 850 O
Long Island City WQXR 1550 O
New York †WABC 860 W
*W2XE 6.12-11.83-15.27-21.52
†WEAF 660 W †W3XL 6.10-17.8
WHN 1010 O WINS 1180 O
†WJZ 760 W WLWL 1100 S
WMCA 570 M WNEW 1250 O
WNYC 810 O WOV 1130 O
Rochester †WHAM 1150 W
Schenectady †WGY 790 W
†W2XAF 9.53-15.33
Syracuse †WFLB 1360 O

NORTH CAROLINA
Asheville †WWNC 570 O
Charlotte †WBT 1080 W
Greensboro WBIG 1440 O
Raleigh †WPTF 680 S

NORTH DAKOTA
Bismarck †KBYR 550 O
Fargo †WDAY 940 O
Grand Forks KFJM 1410 M

OHIO
Akron †WADC 1320 O
Cincinnati †WKRC 550 O
†WVLU 700 Z †WSAI 1330 O
†W3XAL 1330 O
Cleveland †WGAR 1450 M
*WHK 1390 O †WTAM 1070 W
*WBNS 1430 M WOSU 570 O
Columbus WHKC 640 M
Dayton †WHO 1260 O
Toledo †WSPD 1340 O

OKLAHOMA
Norman †KNAD 1010 O
Okla. City †KOMA 1480 S
†WKY 900 O
Tulsa †KVOO 1140 W
*KTUL 1400 M

OREGON
Corvallis KOAC 550 O
Portland †KEX 1180 S
†KGW 620 O †KOIN 940 O

PENNSYLVANIA
Philadelphia †KYW 1020 T
*VCU 11:15 W †WFLI 560 O
*W3XAU 6.06-9.59 WIP 610 O

WASHINGTON
Seattle KIRO 710 O
†KJR 970 S †KOL 1270 O
†KOMO 920 O KTW 1220 O
Spokane †KFPY 890 O
†K5 970 S †KHQ 590 O
Tacoma †KVI 570 O

WEST VIRGINIA
Charleston †WCBS 580 M
Fairmont †WMMN 890 M
Huntington WSAZ 1190 O
Wheeling †WVWA 1160 S

WISCONSIN
Green Bay WTAQ 1330 O
La Crosse WKHB 1380 O
Madison WHA 940 S
†WIBA 1280 O
Milwaukee †WTMJ 620 O
Stevens Point WLBL 900 S

WYOMING
Casper KDFN 1440 M

CANADA

ALBERTA
Calgary CFCN 1030 T
Edmonton CJCA 730 O

BRITISH COLUMBIA
Trail CJAT 910 O
Vancouver CJOR 600 M

MANITOBA
Winnipeg CKY 910 U
CJRO 6.14 CJRX 11.72

NOVA SCOTIA
Halifax CHNS 930 O
Sydney CJCJ 1240 O 6.13

ONTARIO
Hamilton CKOC 1120 M
Ottawa CROO 880 O
Sudbury CKSO 780 O
Toronto †CFRB 690 T
†CRCT 840 S CJRX 6.09
Windsor †CKLW 1030 S

PRINCE EDWARD ISLAND
Charlottetown CFCY 630 O

QUEBEC
Montreal †CFCE 600 M
*CKAC 730 S CPCM 910 S
New Carleton †CHNC 960 O
Quebec CRCK 1050 O

HOLLAND
Eindhoven PCJ 9.50-15.22
Hulsen PHI 17.57

HONDURAS
Tegucigalpa HRN 5.87
San Pedro HRP1 6.36

HUNGARY
Budapest HAS-3 15.37
HAT-4 9.12

ITALY
Rome I2RO- 9.63 11.81
Vatican City HVJ 15.12

JAPAN
Tokio JVM 10.74 JZJ 11.90

MEXICO
Mexico City XEB 1030 T
XEBT 6.00 XEFO 940 S
XEN 780 O XEW 890 W
New Laredo XENT 910 X
Piedras Negras XELO 1110 W
XEPN 580 X
Reynosa XEAW 960 W
Tijuana XEMO 860 S
Villa Acuna XERA 840 Z

PANAMA
HP5- 6.03-6.08-9.60

PERU
Lima OAX4- 5.78-6.26

POLAND
Warsaw SPW 13.63

PORTUGAL
Lisbon CTIAA 965. CSW 9.94

RUSSIA
Moscow RNE 12.00 RAN 9.60

SANTO DOMINGO
Puerto Plata H11S 6.42
Santiago H11A 6.19
Trujillo H11N 6.24
HIT 6.63 HIZ 6.31-6.34

SPAIN
Madrid EAQ 9.48-9.86

SWITZERLAND
Geneva HB- 7.80-9.65

VENEZUELA
Caracas YV5R- 5.80-6.15-6.27
YV5RH 6.40
Maracaibo YV1R- 5.85-6.39
Valencia YV4RD 6.30
Valencia YV4R- 5.91-6.52



with

PHILCO TUBES

THE high quality, sturdy construction and precision design of Philco Tubes will put your radio in shape for all the big broadcasts. Don't put up with faulty reception . . . get the finest performance your set is capable of giving . . . with a set of new Philco Tubes! They cost so little . . . yet do so much to improve radio reception!



FREE TEST OFFER!

Bring in your old tubes.
We will check them for
you absolutely FREE . . .
no obligation whatever!

EXPERT REPAIRS!