

NO SQUAT



NO STOOP



NO SQUINT



1938 PHILCO

NO SQUAT



NO STOOP



NO SQUINT



Philco presents with pride
an entirely new idea of
what a radio should be!



For 1938 . . . Philco presents
the *Inclined Control Panel . . .*
and the first radios designed with
the comfort and convenience of the
listener given first consideration.



No longer need you "Squat, Stoop or Squint" to tune in a station! In the new Double-X models, Philco has combined Automatic Tuning of favorite stations . . . with an Inclined Control Panel . . . to create a radio that can be tuned with ease and grace . . . whether you are standing or sitting.

In the Inclined Sounding Board models, Philco gave the listener the first radio that brought every note up to "ear-level." Now in these Inclined Control Panel models, Philco does for the listener's eyes and back what the Inclined Sounding Board did for his ears!



A year ago Philco introduced Automatic Tuning, and radio listeners everywhere thought the ultimate in tuning convenience had been attained. But now with the introduction of the Inclined Control Panel, Philco has added new ease and convenience to the speed and precision of Automatic Tuning.

No Squat! No Stoop! No Squint! That's the Philco theme song for 1938. In the new Double-X Models you will discover that there is something *really new* in radio . . . and once again only Philco has it!

Major PHILCO Features

- **Acoustic Clarifiers** automatically eliminate unpleasant barrel-like boom, resulting in clarity of tone beyond all previous radio experience.
- **Auditorium Speaker.** A speaker of tremendous size designed to handle any desired volume . . . music enough for dancing in a large hall or soft, rich reproduction of programs when you are spending a quiet evening at home.
- **Automatic Tuning** plus Counterbalanced Magnetic Tuning. Outstanding development of 1937 made even more convenient by placing all controls on the Inclined Control Panel. No squat! No stoop! No squint! One silent turn of the dial and **CLICK** . . . there's your station.
- **Automatic Volume Control** counteracts fading of distant stations and blasting of local stations.
- **Beam Type Output Tubes.** With the adoption of new Beam Type Output Tubes, Philco takes another great forward step that assures greater naturalness than ever before in the reproduction of bass notes.
- **Cathedral Speaker** . . . *extra large size.* In the 690XX, this speaker designed for highest fidelity reproduction . . . with two additional High-Frequency Speakers . . . reproduces the entire frequency range produced by the Super High-Fidelity System at any desired volume without the slightest distortion.
- **Cathedral Two-in-One High-Fidelity Speaker (116XX).** Specially processed center for reproducing high

notes (treble). Flexible rim for reproduction of low notes (bass). High-Fidelity reproduction at any desired volume without distortion.

- **Concert Grand Electro-Dynamic Speaker.** A larger, more efficient and finer-toned speaker that makes a noteworthy contribution to the realistic reproduction of speech and music on the 1938 Philco models for which it is standard equipment.
- **Cone-Centric Automatic Tuning.** *A new Philco development . . .* automatically and accurately locates the station desired through the use of self-centering cones. On the 7 *Double-X* and other models with Cone-Centric Tuning, the call letters of stations (up to fifteen) most regularly tuned in your particular locality, are an integral part of the dial. You swing the pointer to the station you want . . . the built-in cone slips positively and accurately into place, centers the station . . . a slight **CLICK** and there's your program! This automatic action is silent, speedy, accurate.
- **Counterbalanced Magnetic Tuning.** More uniform "pull" throughout the entire broadcasting range. Magnetic tuning may be used to prevent strong foreign stations from drifting, or may be turned off when "fishing" for weak foreign stations.
- **Four-Point Tone Control**—Models 1, 2, 3, 4, 5, 2670, 2650, 665:
 - (A) Brilliant—for speech
 - (B) Bright—for normal reception of music
 - (C) Mellow—first noise-reducing stage
 - (D) Deep—noise-reducing for distant reception

- **Glowing Beam Tuning Range Indicator** shows the band in use.
- **High-Fidelity Audio System** endows speech and music with warmth and naturalness by reproducing all musical instruments . . . and all voices . . . with the characteristic overtones which give them individuality. Full fifteen watts output on the 116XX assures pure, undistorted tone over the full range of broadcasting . . . from the faintest whisper in a mystery drama to the thunderous finale of a great symphony orchestra.
- **Live Rubber Condenser Mountings.** A patented Philco feature eliminating microphonic “squeals” and distortion.
- **Music Interpretation Controls (690XX)** enable the discriminating listener to interpret any selection to suit his own individual taste . . . in other words, to become his own orchestra conductor.
 1. **Selectivity Fidelity Control—Treble**—produces either wide-range Super High-Fidelity . . . or may be adjusted for a narrow-band, highly selective signal for the sharpest tuning of interfering stations. In the selective position, this control is noise-reducing in unfavorable locations.
 2. **Fidelity Control—Bass**—permits perfect adjustment of the low-note volume to the sound level of the selection being played. Through this control the audio bass response of the 690XX may be kept uniform regardless of volume level.

- **Noise-Excluding Signal Amplifier** automatically amplifies the station signal while rejecting interference and image noise.
- **Pentode Audio System.** True, clear, undistorted tone on speech and music.
- **Philco Balanced Superheterodyne Circuit.** Through the scientific balancing of each unit with all others, Philco engineers have raised both the American and Foreign performance of the superheterodyne circuit to new heights of perfection.
- **Philco Color Dial** names and locates foreign stations for convenient, accurate, rapid tuning.
- **Philco Foreign Tuning System** automatically tunes the new Philco High-Efficiency Aerial as you tune the set. Actually doubles the foreign stations you can hear and enjoy.
- **Philco Inclined Sounding Board.** The incline projects high notes up to ear-level, while the large sounding board area reproduces bass notes with all their depth and sonority.
- **Philco Spread-Band Dial** names and locates foreign stations for convenient, accurate, rapid tuning! And through the Philco Foreign Tuning System, these stations are spread from 50% to six times farther apart.
- **Philco Unit Construction** simplifies the wiring, concentrates allied circuits into clearly defined units and, by proper selection of tubes, reduces the length of leads to a minimum. The short leads achieved in the R. F. and I. F.

circuits result in low loss and higher amplification . . . greater sensitivity, sharper selectivity and lessened interference from man-made static.

- **Power Line Noise Rejectors** keep power line noises out of the radio.
- **Push-Pull Audio System.** Two audio tubes in Push-Pull arrangement produce more than double the output and provide a large reserve to prevent distortion of music or speech.
- **Rigid Chassis Base.** Permanent alignment guaranteed through assembly on rigid rust-proofed steel.
- **Safe from Fire and Shock.** Built to conform in every respect to the Underwriters' Safety Standards.
- **Sealed Cabinet.** The Protective Back Shield is a feature which has an especial appeal to women.
- **Shadow Tuning.** Philco Shadow Tuning shows the listener exactly when each station is tuned-in perfectly.
- **Super Class "A" Balanced Phase Push-Pull Audio System.** (Power driven) 10 watts output. Insures reception without distortion at low volume or at full room volume.
- **Super High-Fidelity Audio System (690XX)** gives the widest tonal range, the most lifelike reproduction ever achieved in radio. All musical instruments, from the deep-toned bass viol to the top-most note of the piccolo, and all voices are reproduced with the characteristic overtones that identify and distinguish them one from another.

Triple the tonal range of ordinary good radios! Full 20 watts output without distortion.

- **Three-Point Tone Control** (Models 7, 8, 9, 610, 620, 630, 22, 23):
 - A. Brilliant—for speech
 - B. Mellow—for music
 - C. Deep—noise-reducing for distant reception
- **Twin Automatic Volume Control.** Doubly counteracting fading of distant stations and blasting of local stations.
- **Twin Tone Controls (116XX):** (a) A continuously Variable Treble Control provides High-Fidelity reception for fine musical programs or maximum selectivity to separate interfering stations on adjacent channels. Also, reduces noise when in the selective position. (b) Three Point Variable Bass Compensation Control.
- **Two-Point Tone Control (10-89-60):**
 - A. For speech
 - B. For music
- **Two-Speed Vernier Tuning:**
 - A. Fast speed for swift turning.
 - B. Slow speed for precision tuning of short-wave stations.
- **Variable Automatic Bass Compensation** brings up low notes (bass) as the volume is turned down . . . compensating for the lessened ability of the average ear to hear low notes at their true value with the radio at normal room volume.
- **Wide-Angle Sound Diffusion.** Built-in, sound-spreading truncated cone back of the grille cloth, in front of the speaker.

Tuning Range Coverage

★ ★ ★

Philcos 690XX and 116XX

Standard American Broadcasts . . Day and Night Foreign and American Short-Wave Broadcasts . . State and Municipal Police . . Day and Night Aviation . . Ship and Complete First-Class and Second-Class Amateur Bands.

Philco Double-X Models 1, 2 and 3

Standard American Broadcasts . . State and Municipal Police . . Day and Night Foreign and American Short-Wave Broadcasts . . Day and Night Aviation . . Ship . . Day and Night First-Class Amateur.

Philco Double-X Models 4, 7 and 22

Standard American Broadcasts . . State Police . . Day and Night Foreign and American Short-Wave Broadcasts . . Ship . . Day First-Class Amateur.

Philcos 5-8-9-10-15

Standard American Broadcasts . . Day and Night Foreign and American Short-Wave Broadcasts . . State Police . . Day First-Class Amateur . . Ship.

Philcos 14-60

Standard American Broadcasts . . State and Municipal Police . . Night and Day Aviation . . Night First-Class Amateur . . many American and Night Foreign Short-Wave Broadcasts.

Philco 89

Standard American Broadcasts . . State and Municipal Police . . Second-Class Amateur and Night Aviation.

Philco 62

Standard American Broadcasts . . State and Municipal Police . . Second-Class Amateur.

Philcos 12-93

Standard American Broadcasts . . State Police.

Philco 2670

Standard American Broadcasts . . Day and Night Foreign and American Short-Wave Broadcasts . . Long-Wave Foreign Broadcasts and U. S. Weather Reports . . State and Municipal Police . . Aviation . . Ship . . First- and Second-Class Amateur (Day and Night).

Philco 2650

Standard American Broadcasts . . State Police . . Day and Night Foreign and American Short-Wave Broadcasts . . Long-Wave Foreign Broadcasts and U. S. Weather Reports . . Day Aviation and Day First-Class Amateur.

Philco 665

Standard American Broadcasts . . State and Municipal Police . . Day and Night Foreign and American Short-Wave Broadcasts . . First-Class Amateur Day and Night . . Aviation . . Ship . . *and the Ultra-Short-Wave Broadcasts between 25 and 42 megacycles!*

Philcos 630-620-610

Standard American Broadcasts . . State and Municipal Police . . Day and Night Foreign and American Short-Wave Broadcasts . . Aviation . . Ship . . Day and Night First-Class Amateur Bands.

Philcos 2630-2620

Have similar coverage to 630 and 620 except that a Long-Wave Tuning Range (150 to 350 kilocycles) covering U. S. Weather Reports and foreign long-wave broadcasts is substituted for Municipal Police, and some Aviation and Amateur Bands.

Philco High-Fidelity Means Thrilling Realism

For those who demand the utmost in radio performance and tonal fidelity, the great Philco laboratories have designed and built the 690XX—a Super High-Fidelity instrument with three times the tonal range of good receivers of the past. No effort has been spared to make this the world's finest radio and in addition to the most faithful reproduction ever achieved, completely Automatic Tuning of favorite American stations is provided.

The Inclined Control Panel of the 690 *Double-X* is concealed from view when not in use by a tambour door which rolls down between two panels of quarter-sliced walnut behind which the high-frequency speakers are mounted. Butt walnut and quarter-sliced walnut form the central grille masking the Cathedral Speaker and quarter-sliced walnut is also utilized in the side and top panels.

Refreshing originality is the keynote of the magnificent 690XX . . . an originality inspired by the Inclined Control Panel and carried through in every element of the cabinet design.

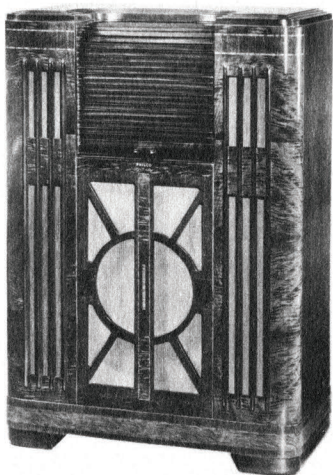
Philco 690XX

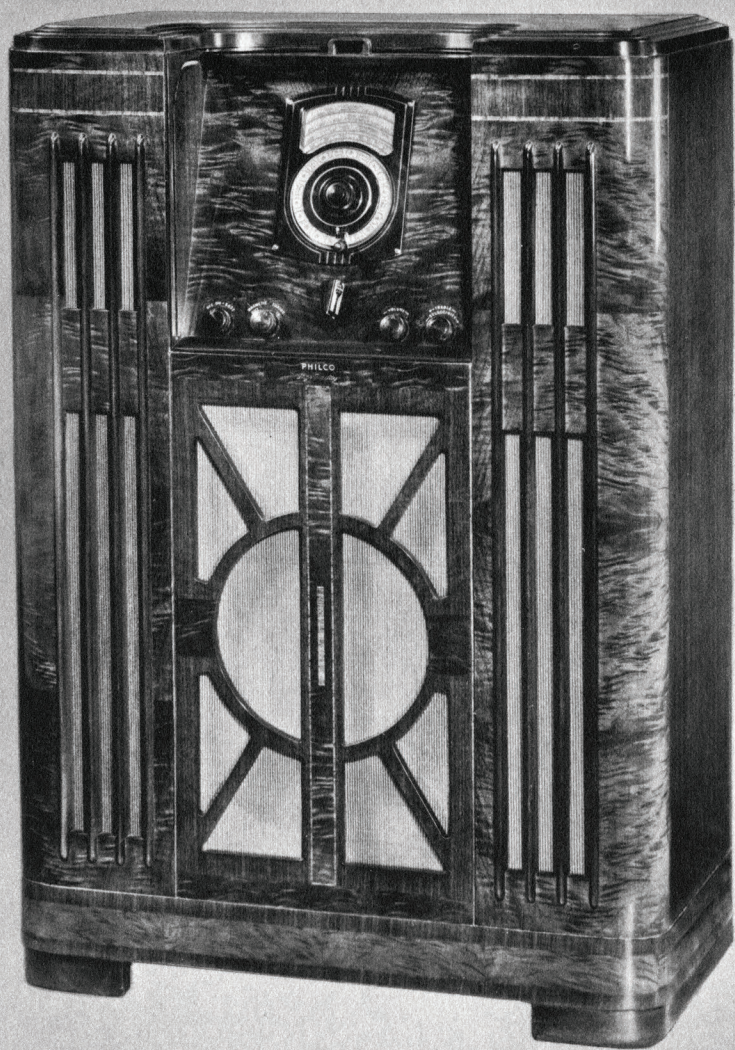
**Shown with tambour
door closed**

44 $\frac{5}{8}$ " high

30 $\frac{1}{2}$ " wide

16 $\frac{1}{8}$ " deep





Philco Super High-Fidelity 690XX
Spread-Band
American and Foreign

With Automatic Tuning and Inclined Control Panel

"NO SQUAT • NO STOOP • NO SQUINT"

FEATURES OF THE 690XX INCLUDE:

Super High-Fidelity Audio System with response from 40 to 8000 cycles. The most faithful reproduction ever attained in radio. Triple the tonal range of ordinary good radios! Full 20 watts output without distortion.

Three Speakers. An extra-large size Cathedral Speaker designed for the highest fidelity reproduction with two additional High-Frequency Speakers.

Philco Automatic Tuning. Outstanding development of 1937 made even more convenient by placing all controls on the Inclined Control Panel. *No squat! No stoop! No squint!* One silent turn of the dial and **CLICK . . .** there's your station!

Counterbalanced Magnetic Tuning.

Sealed Cabinet. The 690xx has the Protective Back Shield . . . a feature which will have an especial appeal to women.

Philco Foreign Tuning System.

Complete Separation of R. F. and Audio Stages. Two separate chassis on two different levels in the cabinet.

Four Acoustic Clarifiers absorb bass notes rebounding from the back or sides of the cabinet . . . automatically preventing barrel-like boom and interfering echoes.

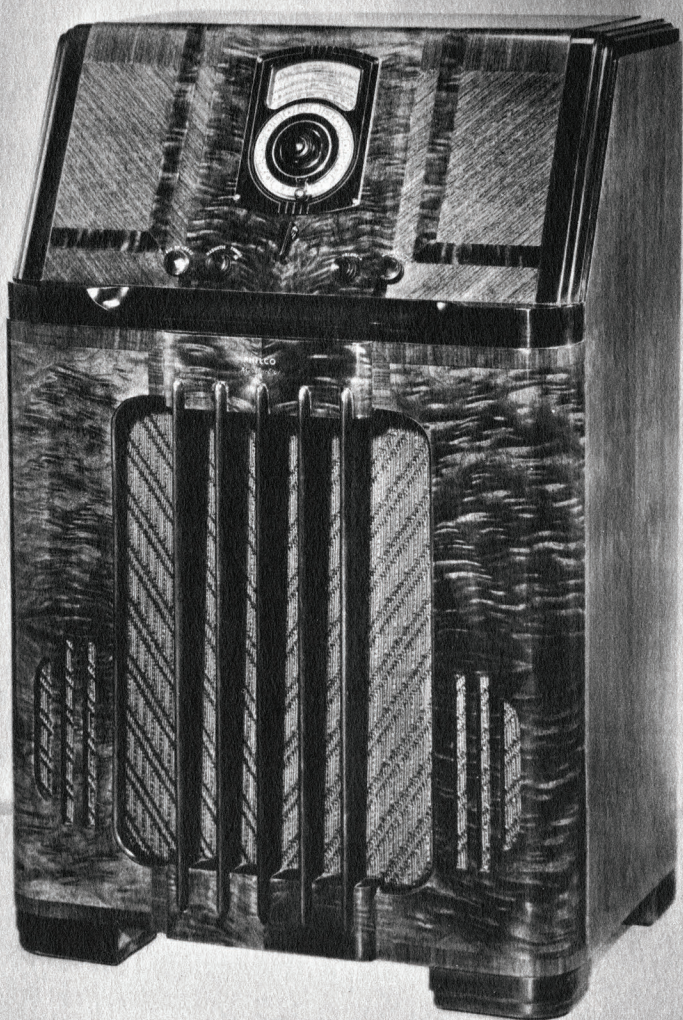
Music Interpretation Controls enable the discriminating listener to interpret any selection to suit his own individual taste . . . in other words, to become his own orchestra conductor.

Wide-Angle Sound Diffusion.

Philco Spread-Band Dial names and locates foreign stations and spreads them six times farther apart.

Glowing Beam Tuning Range Indicator . . . Two-Speed Vernier Tuning . . . Philco Unit Construction . . . **Twin Automatic Volume Control** . . . Noise-Excluding Signal Amplifier.

Philco Balanced Superheterodyne Circuit with 20 Philco High-Efficiency Tubes. Five Spread-Band Tuning Ranges cover Standard American Broadcasts . . . Day and Night Foreign and American Short-Wave Broadcasts . . . State and Municipal Police . . . Day and Night Aviation . . . Ship . . . Day and Night First and Second-Class Amateur . . . all that's interesting in the air!



Philco High-Fidelity 116XX

Spread-Band

American and Foreign

With Automatic Tuning and Inclined Control Panel

"NO SQUAT • NO STOOP • NO SQUINT"

Philco 116XX

High-Fidelity . . . Spread-Band American and Foreign

Philco furniture craftsmen have spared neither time nor expense in the design and in the choice woods employed for the radio which symbolizes “*No squat—No stoop—No squint*” tuning to all the world! Beautifully figured butt walnut is used in the panels surrounding the enlarged grille, while the same wood contrasted with quarter-sliced walnut enriches the Inclined Control Panel. A cabinet magnificent in its simplicity!

43 $\frac{3}{4}$ " high

27 $\frac{1}{2}$ " wide

19 $\frac{1}{2}$ " deep

FEATURES OF THE 116XX INCLUDE :

High-Fidelity Audio System with response from 60 to 5000 cycles. Double the tonal range of ordinary good radios. New Beam Type Output Tubes. Full 15 watts output.

Philco Automatic Tuning. Outstanding development of 1937 made even more convenient by placing all controls on the Inclined Control Panel. *No squat! No stoop! No squint!* One silent turn of the dial and CLICK . . . there's your station!

Counterbalanced Magnetic Tuning . . . Philco Foreign Tuning System . . . Philco Inclined Sounding Board . . . Cathedral Two-in-One High Fidelity Speaker . . . Wide-Angle Sound Diffusion . . . Twin Tone Controls.

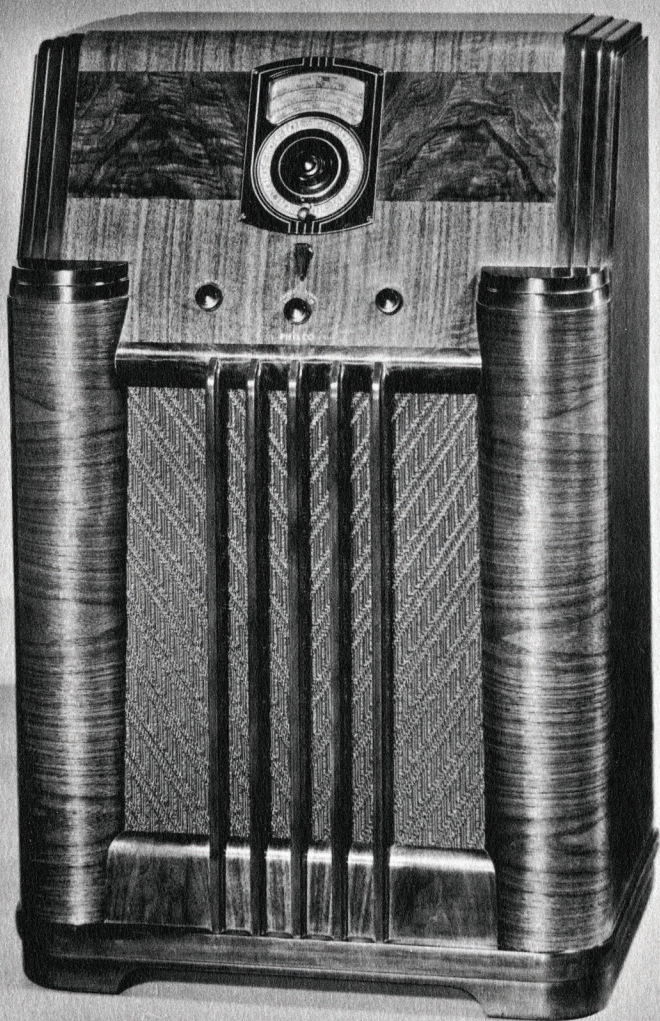
Sealed Cabinet . . . a feature with an especial appeal to women.

Acoustic Clarifiers automatically eliminate unpleasant barrel-like boom.

Philco Spread-Band Dial names and locates foreign stations and spreads them six times farther apart!

Glowing Beam Tuning Range Indicator . . . Two-Speed Vernier Tuning . . . Philco Unit Construction . . . Automatic Volume Control . . . Noise-Excluding Signal Amplifier.

Philco Balanced Superheterodyne Circuit with 15 Philco High-Efficiency Tubes. Five Tuning Ranges cover Standard American Broadcasts . . . Day and Night Foreign and American Short-Wave Broadcasts . . . State and Municipal Police . . . Day and Night Aviation . . . Ship . . . Day and Night First and Second-Class Amateur . . . all that's interesting in the air!



Philco Spread-Band 1XX

American and Foreign

With Automatic Tuning and Inclined Control Panel

“NO SQUAT • NO STOOP • NO SQUINT”

Philco Spread-Band 1XX

American and Foreign

A superb example of functional design! The Inclined Control Panel formed of contrasting bands of claro and butt walnut rests on sliced walnut columns which frame the speaker grille. Within the imposing cabinet is a twelve-tube Automatic Tuning Philco, with Counterbalanced Magnetic Tuning and a Super Class "A" Balanced Phase Push-Pull Audio System. Power enough to flood the largest room with melody. Impressive in appearance and in performance.

43 $\frac{1}{8}$ " high

27 $\frac{1}{2}$ " wide

17 $\frac{3}{4}$ " deep

FEATURES OF THE 1XX INCLUDE :

Philco Automatic Tuning. Outstanding development of 1937 made even more convenient by placing all controls on the Inclined Control Panel. *No squat! No stoop! No squint!* CLICK . . there's your station!

Counterbalanced Magnetic Tuning. More uniform "pull" over the standard broadcast tuning range.

Sealed Cabinet. The Protective Back Shield is a feature with an especial appeal to women.

Philco Foreign Tuning System.

Philco Inclined Sounding Board.

Auditorium Speaker.

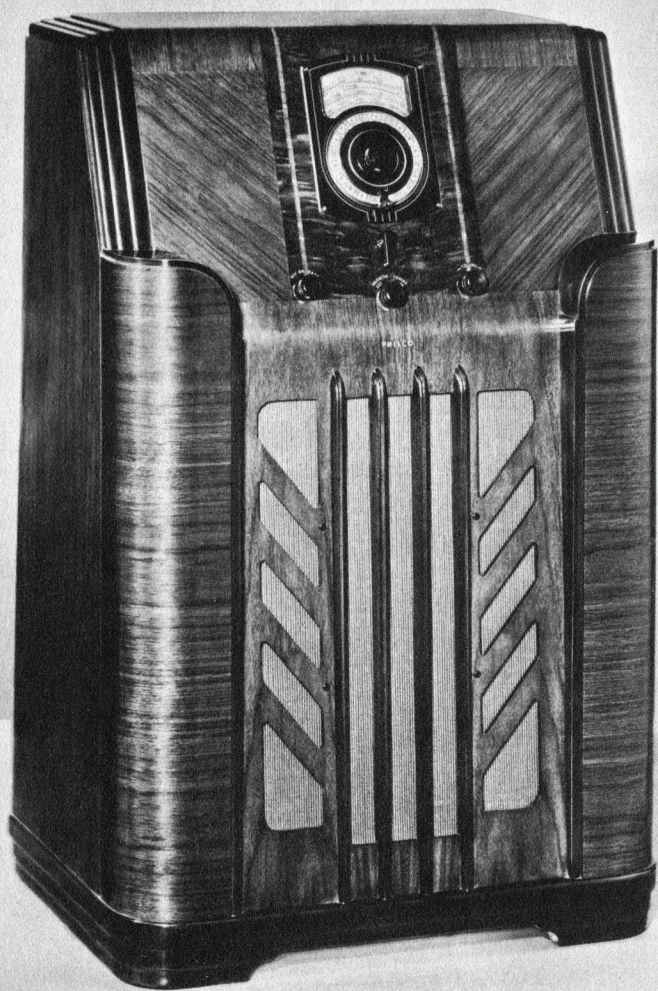
Four-Point Tone Control.

Spread-Band Dial names and locates foreign and domestic short-wave stations in color.

Super Class "A" Balanced Phase Push-Pull Audio System.

Glowing Beam Tuning Range Indicator . . Flood-lighted call letters on Automatic Tuning Dial . . Two-Speed Vernier Tuning . . Philco Unit Construction . . Automatic Volume Control . . Noise-Excluding Signal Amplifier.

Philco Balanced Superheterodyne Circuit with 12 Philco High-Efficiency Tubes. Three Spread-Band Tuning Ranges cover Standard American Broadcasts . . State and Municipal Police . . Day and Night Foreign and American Short-Wave Broadcasts . . Day and Night Aviation . . Ship . . Day and Night First-Class Amateur.



Philco Spread-Band 2XX

American and Foreign

With Automatic Tuning and Inclined Control Panel

"NO SQUAT • NO STOOP • NO SQUINT"

Philco Spread-Band 2XX

American and Foreign

Dignified . . massive . . truly the Philco 2 Double-X is a radio whose appearance proudly proclaims its purpose! The sliced walnut cabinet of striking originality houses an eleven-tube Automatic Tuning Philco, with Counterbalanced Magnetic Tuning and a Balanced Phase Push-Pull Audio System.

42 $\frac{5}{8}$ " high

26 $\frac{7}{8}$ " wide

18 $\frac{5}{8}$ " deep

FEATURES OF THE 2XX INCLUDE :

Philco Automatic Tuning. Outstanding development of 1937 made even more convenient by placing all controls on the Inclined Control Panel. *No squat! No stoop! No squint!* CLICK . . there's your station!

Counterbalanced Magnetic Tuning. More uniform "pull" over the standard broadcast tuning range.

Sealed Cabinet. The Protective Back Shield is a feature with an especial appeal to women.

Philco Foreign Tuning System.

Philco Inclined Sounding Board.

Concert Grand Electro-Dynamic Speaker.

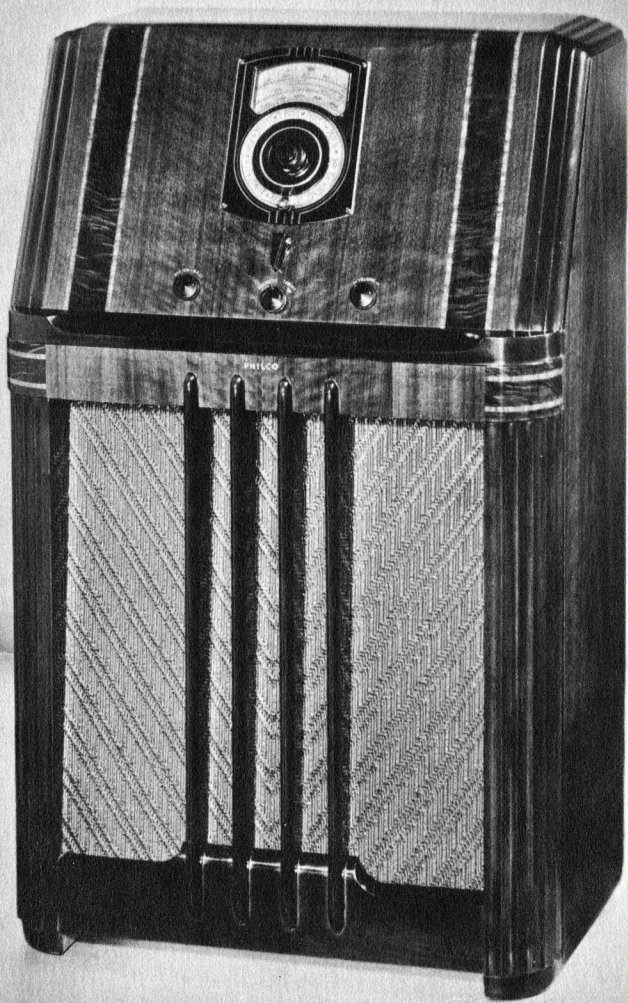
Four-Point Tone Control.

Balanced Phase Push-Pull Audio System.

Spread-Band Dial with foreign stations named and located in color for instant, accurate tuning.

Glowing Beam Tuning Range Indicator . . Flood-lighted call letters on Automatic Tuning Dial . . Two-Speed Vernier Tuning . . Philco Unit Construction . . Automatic Volume Control . . Noise-Excluding Signal Amplifier.

Philco Balanced Superheterodyne Circuit with 11 Philco High-Efficiency Tubes. Three Spread-Band Tuning Ranges cover Standard American Broadcasts . . State and Municipal Police . . Day and Night Foreign and American Short-Wave Broadcasts . . Day and Night Aviation . . Ship . . Day and Night First-Class Amateur.



Philco Spread-Band 3XX

American and Foreign

With Automatic Tuning and Inclined Control Panel

"NO SQUAT • NO STOOP • NO SQUINT"

Philco Spread-Band 3XX

American and Foreign

The Philco 3XX is housed in a cabinet which has an instant appeal. The Inclined Control Panel is of sliced walnut with narrowwood inlays . . a combination of woods repeated in the panel above the enlarged expanse of the Inclined Sounding Board.

Nine Tubes . . Three Spread-Band Tuning Ranges . . Four-Point Tone Control . . Philco Automatic Tuning and Counterbalanced Magnetic Tuning.

42 $\frac{1}{8}$ " high

25 $\frac{1}{2}$ " wide

16 $\frac{5}{8}$ " deep

FEATURES OF THE 3XX INCLUDE :

Philco Automatic Tuning. Outstanding development of 1937 made even more convenient by placing all controls on the Inclined Control Panel. *No squat! No stoop! No squint!* CLICK . . there's your station!

Counterbalanced Magnetic Tuning. More uniform "pull" over the standard broadcast tuning range.

Sealed Cabinet. The Protective Back Shield is a feature with an especial appeal to women.

Philco Foreign Tuning System.

Philco Inclined Sounding Board.

Push-Pull Phase Inverted Audio System.

Concert Grand Electro-Dynamic Speaker.

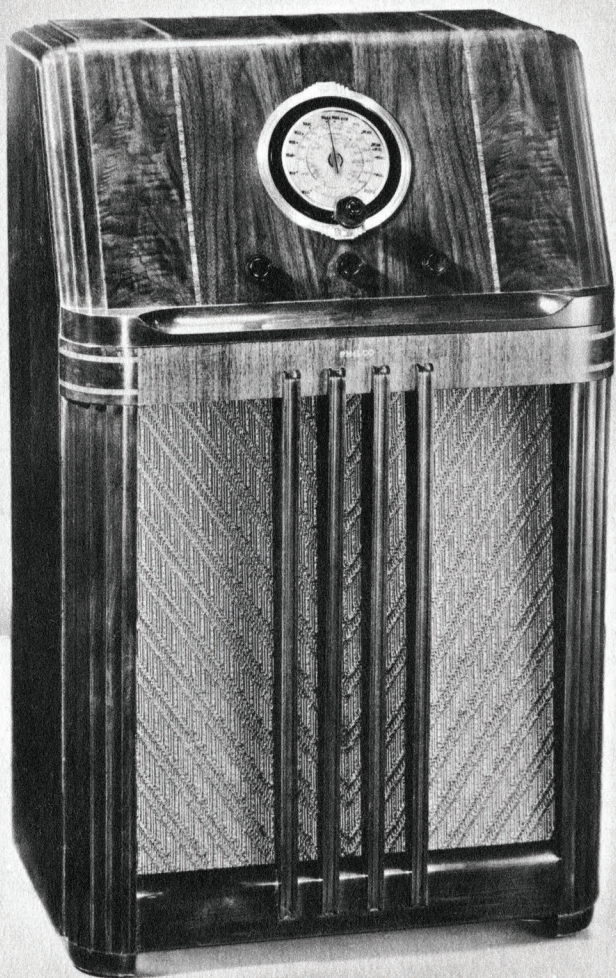
Four-Point Tone Control.

Noise-Excluding Signal Amplifier.

Spread-Band Dial with stations named and located in color.

Glowing Beam Tuning Range Indicator . . Two-Speed Vernier Tuning . . Philco Unit Construction . . Automatic Volume Control.

Philco Balanced Superheterodyne Circuit with 9 Philco High-Efficiency Tubes. Three Spread-Band Tuning Ranges cover Standard American Broadcasts . . State and Municipal Police . . Day and Night Foreign and American Short-Wave Broadcasts . . Day and Night Aviation . . Ship . . Day and Night First-Class Amateur.



Philco 4XX

American and Foreign

With Automatic Tuning and Inclined Control Panel

"NO SQUAT • NO STOOP • NO SQUINT"

Philco 4XX

American and Foreign

Philco Cone-Centric Automatic Tuning provides instant, automatic, silent selection of stations by call letters. Call letters of the stations (up to 15) most popular in your locality form an integral part of the dial on the Inclined Control Panel. Swing the pointer to the station desired . . . CLICK . . . there it is! **No squat! No stoop! No squint!**

Eight Philco High-Efficiency Tubes, the Noise-Excluding Signal Amplifier, and a Push-Pull Phase Inverted Audio Circuit provide magnificent power, selectivity and tonal richness. Beautifully figured and inlaid walnuts are combined in a cabinet of striking design.

41 $\frac{5}{8}$ " high

25 $\frac{1}{2}$ " wide

15 $\frac{5}{8}$ " deep

FEATURES OF THE 4XX INCLUDE :

Sealed Cabinet. The Protective Back Shield is a feature with an especial appeal to women.

Philco Foreign Tuning System.

Philco Inclined Sounding Board.

Concert Grand Electro-Dynamic Speaker.

Four-Point Tone Control.

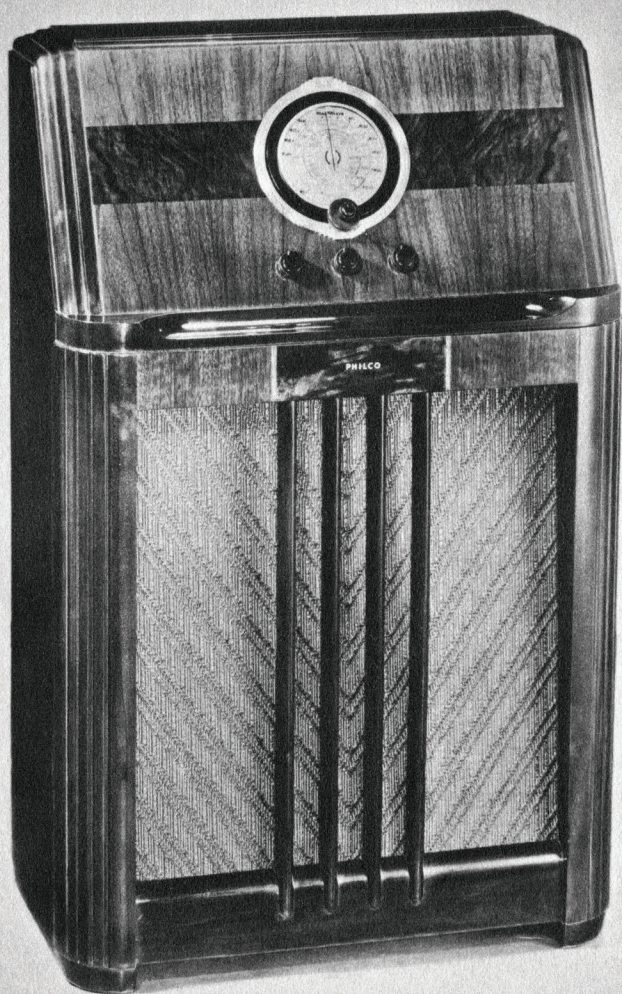
Philco Cone-Centric Dial names foreign and domestic stations.

Push-Pull Phase Inverted Audio Circuit.

Noise-Excluding Signal Amplifier (Robot Tuner) automatically amplifies the station signal while rejecting interference and image noise.

Two-Speed Tuning . . . Automatic Volume Control.

Philco Balanced Superheterodyne Circuit with 8 Philco High-Efficiency Tubes. Two Tuning Ranges cover Standard American Broadcasts . . . State Police . . . Day and Night Foreign and American Short-Wave Broadcasts . . . Day First-Class Amateur . . . Ship.



Philco 7XX

American and Foreign

Philco 22XX

*American and Foreign
For AC-DC Operation*

With Automatic Tuning and Inclined Control Panel

“NO SQUAT • NO STOOP • NO SQUINT”

Philco 7XX

American and Foreign

At a price away under the lowest ever quoted for an American and Foreign Automatic Tuning Philco . . . Philco presents not only Automatic Tuning but the Inclined Control Panel! Sliced American walnut and butt walnut are used in the Inclined Control Panel of the 7xx. Rotary walnut forms the side panels, while the top is of sliced walnut. Rich, hand-rubbed finish.

41 $\frac{1}{8}$ " high 25 $\frac{1}{2}$ " wide 13 $\frac{5}{8}$ " deep

FEATURES OF THE 7XX INCLUDE :

Philco Cone-Centric Automatic Tuning provides instant, automatic, silent selection of stations by call letters. Call letters of the stations (up to 15) most popular in your locality form an integral part of the dial on the Inclined Control Panel. Swing the pointer to the station desired . . . CLICK . . . there it is! *No squat! No stoop! No squint!*

Sealed Cabinet. The Protective Back Shield is a feature with an especial appeal to women.

Philco Foreign Tuning System.

Philco Inclined Sounding Board.

Concert Grand Electro-Dynamic Speaker.

Three-Point Tone Control.

Philco Cone-Centric Dial names domestic and foreign stations.

Two-Speed Vernier Tuning . . . Automatic Volume Control . . . Pentode Audio System.

Philco Balanced Superheterodyne Circuit with 6 Philco High-Efficiency Tubes. Two Tuning Ranges cover Standard American Broadcasts . . . State Police . . . Day and Night Foreign and American Short-Wave Broadcasts . . . Day First-Class Amateur . . . Ship.

★ ★ ★

Philco 22XX

American and Foreign

In same cabinet and with similar features, but designed for AC-DC operation.



Philco 7CS

American and Foreign

Philco 22CS

*American and Foreign
For AC-DC Operation*

With Automatic Tuning

Philco 7CS

American and Foreign

All the ease, convenience, and precision of Philco Cone-Centric Automatic Tuning without getting up from your easy chair! That's what Philco offers in the "Sit-Downer" . . . a chairside model that is just about the most attractive cabinet of this type you've ever had the good fortune to see! The cabinet is constructed entirely of beautifully grained sliced walnut.

21 $\frac{3}{8}$ " high 15 $\frac{1}{4}$ " wide 25 $\frac{1}{4}$ " deep

FEATURES OF THE 7CS INCLUDE :

Philco Cone-Centric Automatic Tuning provides instant, automatic, silent selection of stations by call letters. Call letters of the stations (up to 15) most popular in your locality form an integral part of the dial. Swing the pointer to the station desired . . . CLICK . . . there it is!

Philco Foreign Tuning System.

Three-Point Tone Control.

Philco Cone-Centric Dial names domestic and foreign stations.

Standard Electro-Dynamic Speaker.

Two-Speed Vernier Tuning . . . Automatic Volume Control . . . Pentode Audio System.

Philco Balanced Superheterodyne Circuit with 6 Philco High-Efficiency Tubes. Two Tuning Ranges cover Standard American Broadcasts . . . State Police . . . Day and Night Foreign and American Short-Wave Broadcasts . . . Day First-Class Amateur . . . Ship.

★ ★ ★

Philco 22CS

American and Foreign

In same cabinet and with similar features, but designed for AC-DC operation.



Philco 7T
American and Foreign

Philco 22T
American and Foreign
For AC-DC Operation
With Automatic Tuning

Philco 7T

American and Foreign

Automatic Tuning in a cabinet that can be tucked away on a book-shelf or placed on a table within easy reach! That's what Philco gives you in the 7T—an Automatic Tuning Table Model housed in a smartly styled cabinet of Platinum Walnut with Zebrano Inlays.

11 $\frac{1}{4}$ " high

17 $\frac{9}{16}$ " wide

9 $\frac{11}{16}$ " deep

FEATURES OF THE 7T INCLUDE :

Philco Cone-Centric Automatic Tuning provides instant, automatic, silent selection of stations by call letters. Call letters of the stations (up to 15) most popular in your locality form an integral part of the dial. Swing the pointer to the station desired . . . CLICK . . . there it is!

Philco Foreign Tuning System automatically tunes the Philco High-Efficiency Aerial as you tune the set. Doubles the foreign stations you can hear and enjoy.

Standard Electro-Dynamic Speaker.

Three-Point Tone Control.

Philco Cone-Centric Dial names domestic and foreign stations. Two-Speed Vernier Tuning . . . Automatic Volume Control . . . Pentode Audio System.

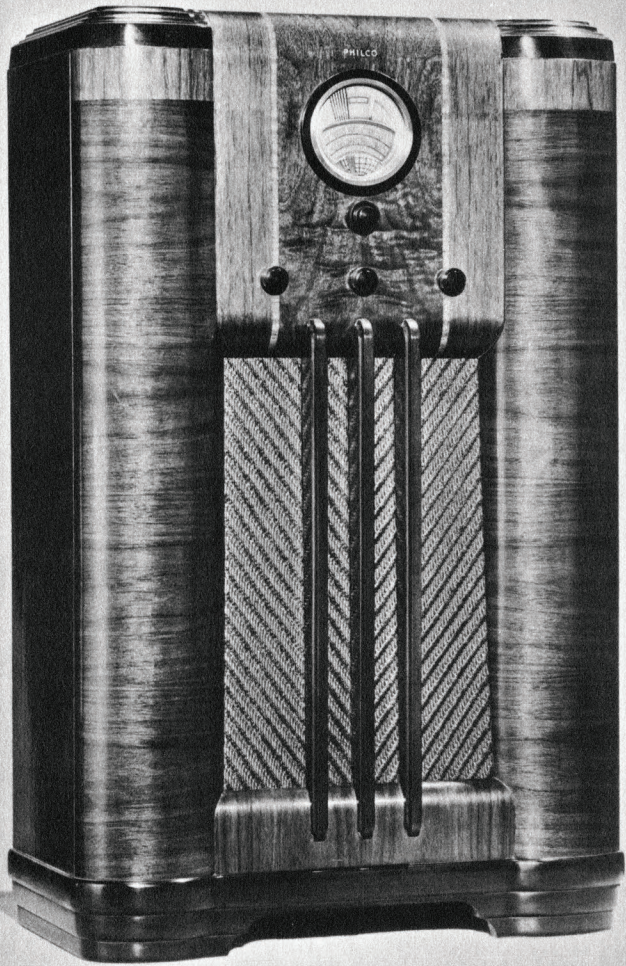
Philco Balanced Superheterodyne Circuit with 6 Philco High-Efficiency Tubes. Two Tuning Ranges cover Standard American Broadcasts . . . State Police . . . Day and Night Foreign and American Short-Wave Broadcasts . . . Day First-Class Amateur . . . Ship.

★ ★ ★

Philco 22T

American and Foreign

In same cabinet and with similar features, but designed for AC-DC operation.



Philco Spread-Band 5X
American and Foreign

Philco Spread-Band 5X

American and Foreign

There's imposing dignity in the rounded side panels of beautifully grained sliced walnut, and in the severely simple treatment of the grille and instrument panel on which narrawood inlays accentuate the contrast between butt walnut and sliced walnut panels.

$40\frac{3}{8}$ " high $25\frac{1}{4}$ " wide $12\frac{3}{16}$ " deep

F E A T U R E S O F T H E 5 X I N C L U D E :

Philco Foreign Tuning System.

Sealed Cabinet. The 5x has the Protective Back Shield . . a feature with an especial appeal to women.

Philco Inclined Sounding Board.

Concert Grand Electro-Dynamic Speaker.

Four-Point Tone Control.

Noise-Excluding Signal Amplifier automatically amplifies the station signal while rejecting interference and image noise.

Philco Color Dial with foreign and domestic short-wave stations named and located in color.

Shadow Tuning.

Push-Pull Phase Inverted Audio Circuit.

Two-Speed Vernier Tuning . . Automatic Volume Control . . Glowing Beam Station Finder.

Philco Balanced Superheterodyne Circuit with 8 Philco High-Efficiency Tubes. Two Tuning Ranges cover Standard American Broadcasts . . State Police . . Day and Night Foreign and American Short-Wave Broadcasts . . Day First-Class Amateur . . Ship.



Philco Spread-Band 5B
American and Foreign

Philco Spread-Band 5B

American and Foreign

A smoothly bent walnut top and side panel is set on to a frame shaped to form a continuous curved moulding around the front panel. The instrument panel of figured walnut, and the handsome grille are framed by walnut pilasters. A two-tone effect is achieved by a darker base moulding. Hand-rubbed finish.

20 $\frac{1}{4}$ " high 15 $\frac{7}{8}$ " wide 11 $\frac{5}{8}$ " deep

FEATURES OF THE 5B INCLUDE :

Philco Foreign Tuning System automatically tunes the Philco High-Efficiency Aerial as you tune the set. Doubles the foreign stations you can hear and enjoy.

Standard Electro-Dynamic Speaker.

Four-Point Tone Control.

Noise-Excluding Signal Amplifier automatically amplifies the station signal while rejecting interference and image noise.

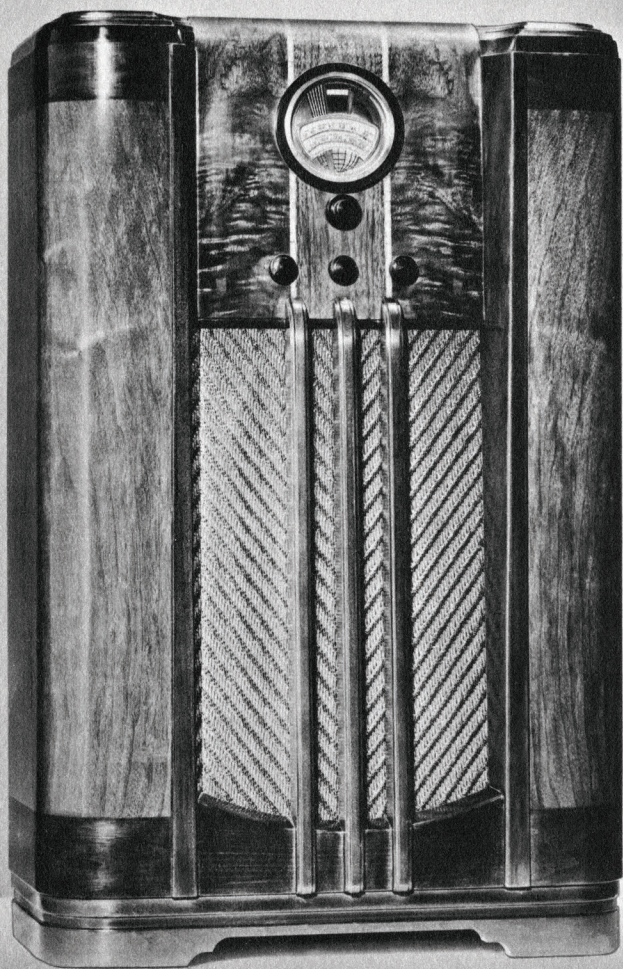
Philco Color Dial with foreign and domestic short-wave stations named and located in color.

Shadow Tuning.

Push-Pull Phase Inverted Audio Circuit.

Two-Speed Vernier Tuning . . Automatic Volume Control . . Glowing Beam Station Finder.

Philco Balanced Superheterodyne Circuit with 8 Philco High-Efficiency Tubes. Two Tuning Ranges cover Standard American Broadcasts . . State Police . . Day and Night Foreign and American Short-Wave Broadcasts . . Day First-Class Amateur . . Ship.



Philco Spread-Band 8X

American and Foreign

Philco 23X

American and Foreign

For AC-DC Operation

Philco Spread-Band 8X

American and Foreign

Walnuts carefully chosen for the beauty of their grain, striking inlays which lend distinction to the instrument panel, a grille design of dignified simplicity . . . all contribute to the massive effect of the 8x cabinet. Inside the cabinet, there's a Philco with a beauty of tone full worthy of its setting.

39½" high

24¾" wide

11⅛" deep

FEATURES OF THE 8X INCLUDE :

Philco Inclined Sounding Board. The incline projects high notes up to ear level, while the large sounding board reproduces bass notes with all their depth and sonority.

Sealed Cabinet. The Protective Back Shield is a feature with an especial appeal to women.

Philco Foreign Tuning System.

Oversize Electro-Dynamic Speaker.

Three-Point Tone Control.

Philco Color Dial with foreign stations named and located in color for rapid, accurate tuning.

Pentode Audio System.

Shadow Tuning.

Glowing Beam Station Finder . . . Two-Speed Vernier Tuning . . . Variable Bass Compensation . . . Automatic Volume Control.

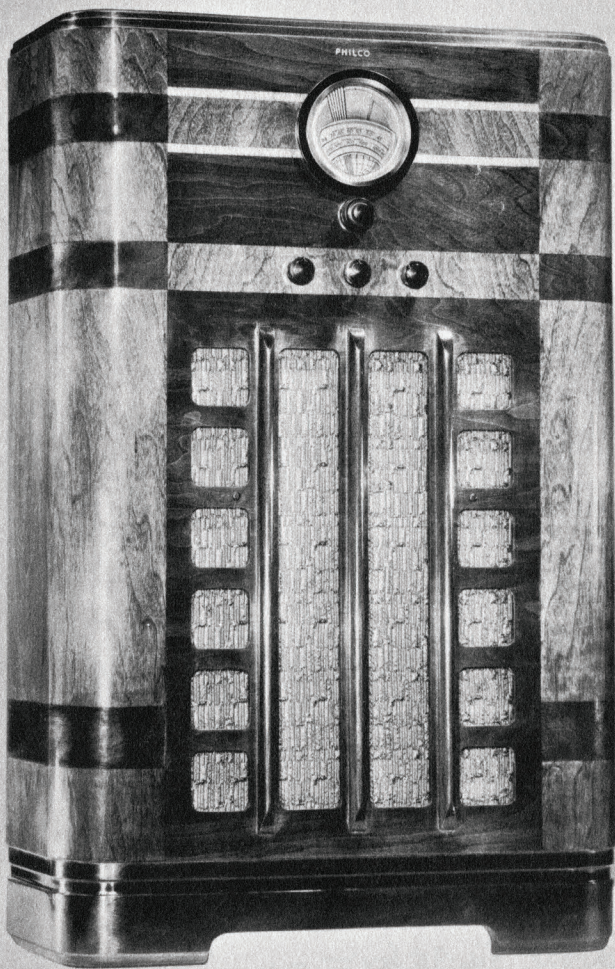
Philco Balanced Superheterodyne Circuit with 6 Philco High-Efficiency Tubes. Two Tuning Ranges cover Standard American Broadcasts . . . State Police . . . Day and Night Foreign and American Short-Wave Broadcasts . . . Day First-Class Amateur . . . Ship.

★ ★ ★

Philco 23X

American and Foreign

In same cabinet and with similar features, but designed for AC-DC operation.



Philco 9K
American and Foreign

Philco 9K

American and Foreign

The design of the 9K sets an entirely new note in radio cabinetry, and the rectangular effect which characterizes the grille is repeated in contrasting panels of the rotary walnut which forms the entire front of the cabinet.

39 $\frac{3}{4}$ " high 25" wide 10 $\frac{3}{8}$ " deep

FEATURES OF THE 9K INCLUDE :

Philco Superheterodyne Circuit with 6 Philco High-Efficiency Tubes.

Two Tuning Ranges cover Standard American Broadcasts . . State Police . . Day and Night Foreign and American Short-Wave Broadcasts . . Day First-Class Amateur . . Ship.

Pentode Audio System.

Oversize Electro-Dynamic Speaker.

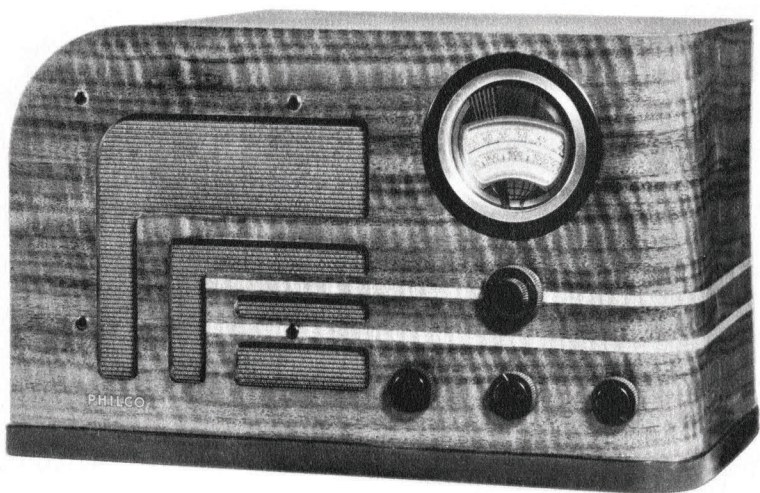
Philco Foreign Tuning System automatically tunes the Philco High-Efficiency Aerial as you tune the set. Doubles the foreign stations you can hear and enjoy.

Philco Color Dial names and locates Foreign Stations in color.

Three-Point Tone Control.

Variable Bass Compensation . . Glowing Beam Station Finder . . Automatic Volume Control . . Two-Speed Vernier Tuning.

Sealed Cabinet. The Protective Back Shield is a feature with an especial appeal to women.



Philco 9T
American and Foreign

Philco 9T

American and Foreign

Highly figured claro walnut enriches the instrument panel of the 9T, while two inlays of curly maple add a distinctive decorative note.

With the Philco Foreign Tuning System, the Color Dial with Foreign Stations named and located in color, and three-point tone control . . . the 9T is ideal for the bedroom or as an "extra" set anywhere in the home.

10 $\frac{7}{8}$ " high 17 $\frac{5}{8}$ " wide 9" deep

FEATURES OF THE 9T INCLUDE :

Philco Superheterodyne Circuit with 6 Philco High-Efficiency Tubes.

Two Tuning Ranges cover Standard American Broadcasts . . . State Police . . . Day and Night Foreign and American Short-Wave Broadcasts . . . Day First-Class Amateur . . . Ship.

Pentode Audio System.

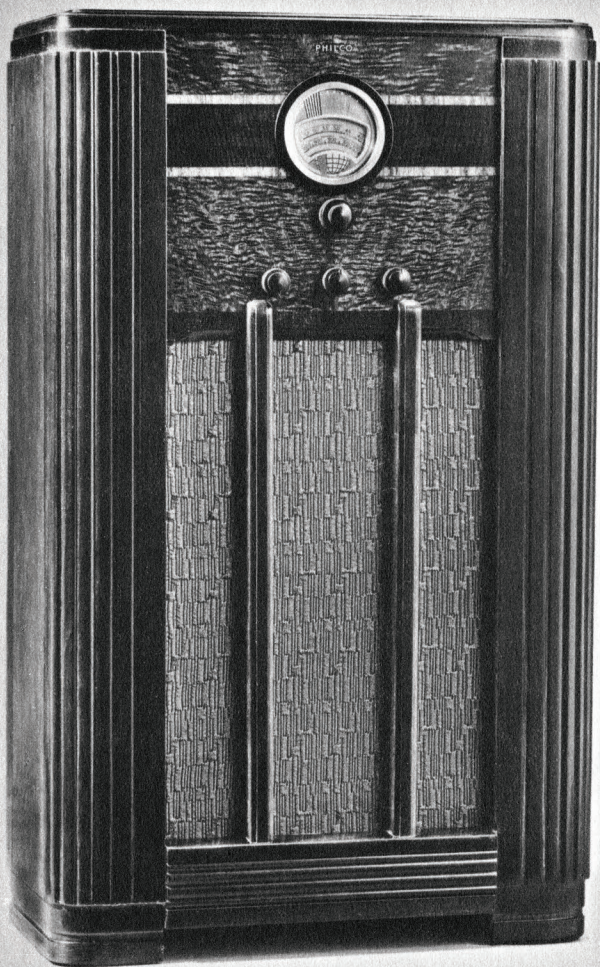
Standard Electro-Dynamic Speaker.

Philco Foreign Tuning System automatically tunes the Philco High-Efficiency Aerial as you tune the set. Doubles the foreign stations you can hear and enjoy.

Philco Color Dial names and locates Foreign Stations in color.

Three-Point Tone Control.

Variable Bass Compensation . . . Glowing Beam Station Finder . . . Automatic Volume Control . . . Two-Speed Vernier Tuning.



Philco 10F

American and Foreign

Philco 23F

*American and Foreign
For AC-DC Operation*

Philco 10F

American and Foreign

Note particularly the richness of the 10F instrument panel . . . a beautiful combination of American Walnut and reproduced Australian Butt, with a reproduced Laurel horizontal panel edged by narrawood inlays centering attention on the large Color Dial.

38 $\frac{1}{8}$ " high 22 $\frac{7}{8}$ " wide 10 $\frac{1}{8}$ " deep

FEATURES OF THE 10F INCLUDE :

Philco Superheterodyne Circuit with 5 Philco High-Efficiency Tubes.

Two Tuning Ranges cover Standard American Broadcasts . . . State Police . . . Day and Night Foreign and American Short-Wave Broadcasts . . . Day First-Class Amateur . . . Ship.

Pentode Audio System.

Oversize Electro-Dynamic Speaker.

Two-Point Tone Control.

Philco Foreign Tuning System automatically tunes the Philco High-Efficiency Aerial as you tune the set. Doubles the foreign stations you can hear and enjoy.

Philco Color Dial with Foreign Stations named and located in color.

Glowing Beam Station Finder . . . Two-Speed Vernier Tuning . . . Automatic Volume Control.

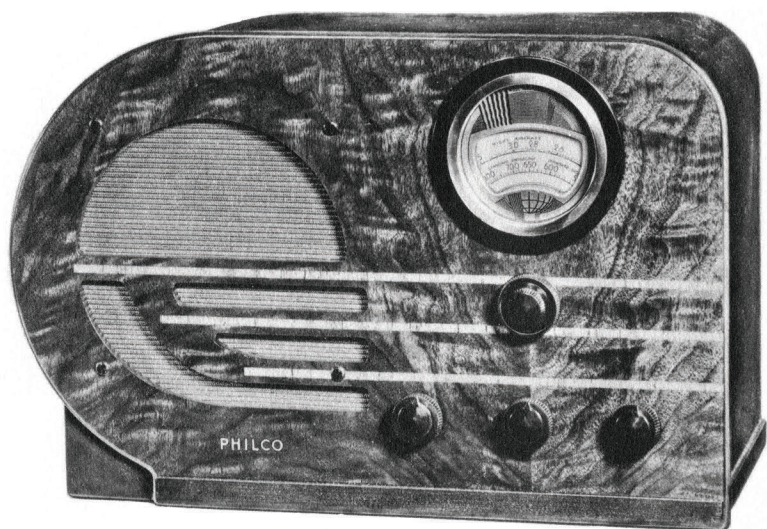
Sealed Cabinet. The Protective Back Shield is a feature with an especial appeal to women.

★ ★ ★

Philco 23F

American and Foreign

The 6-Tube, 23 Chassis for AC-DC operation is also available in this smartly styled console.



Philco 10T
American and Foreign

Philco 23T
American and Foreign
For AC-DC Operation

Philco 10T

American and Foreign

In a cabinet of reproduced butt and rotary walnuts and narra-wood inlays, the 10T reaches out to bring thrilling programs from home and abroad with surprising volume and regularity.

11" high 16 $\frac{1}{4}$ " wide 9" deep

FEATURES OF THE 10T INCLUDE :

Philco Superheterodyne Circuit with 5 Philco High-Efficiency Tubes.

Two Tuning Ranges cover Standard American Broadcasts . . State Police . . Day and Night Foreign and American Short-Wave Broadcasts . . Day First-Class Amateur . . Ship.

Pentode Audio System.

Standard Electro-Dynamic Speaker.

Two-Point Tone Control.

Philco Foreign Tuning System automatically tunes the Philco High-Efficiency Aerial as you tune the set. Doubles the foreign stations you can hear and enjoy.

Philco Color Dial with Foreign Stations named and located in color.

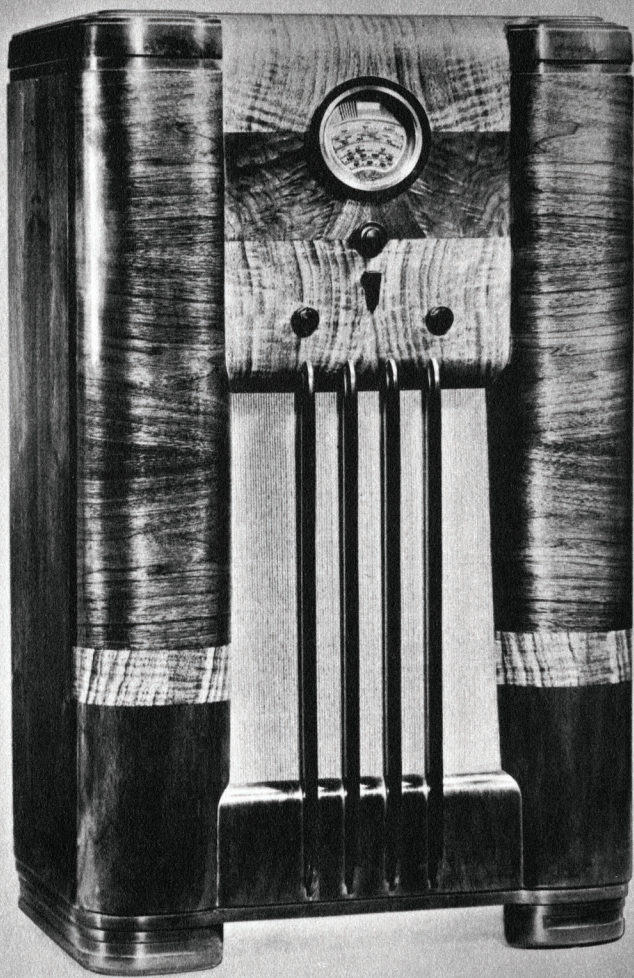
Glowing Beam Station Finder . . Two-Speed Vernier Tuning . . Automatic Volume Control.

★ ★ ★

Philco 23T

American and Foreign

The 6-Tube, 23 Chassis for AC-DC operation is also available in this same striking table model.



Philco Spread-Band 2670x

American and Foreign

With Long-Wave Tuning Range

Philco Spread-Band 2670x

American and Foreign

In the 2670x Philco provides the finest of reception on the long-wave tuning range between 150 and 395 kilocycles on which the U. S. Weather Reports are broadcast and on which many foreign long-wave stations operate. Five Spread-Band Tuning Ranges on the 2670x spread foreign and domestic short-wave stations four times farther apart. The striking hand-rubbed cabinet is made of beautifully matched butt walnut and claro walnut.

39 $\frac{3}{4}$ " high

25 $\frac{1}{2}$ " wide

15 $\frac{3}{4}$ " deep

FEATURES OF THE 2670X INCLUDE :

Five Spread-Band Tuning Ranges cover Standard American Broadcasts . . Day and Night Foreign and American Short-Wave Broadcasts . . Long-Wave Foreign Broadcasts and U. S. Weather Reports . . State and Municipal Police . . Aviation . . Ship and Amateur.

Philco Balanced Superheterodyne Circuit with 11 Philco High-Efficiency Tubes.

Spread-Band Dial. Short-Wave stations spread more than four times farther apart . . named and located in color.

Push-Pull Audio System.

Shadow Tuning.

Philco Foreign Tuning System.

Glowing Beam Tuning Range Indicator.

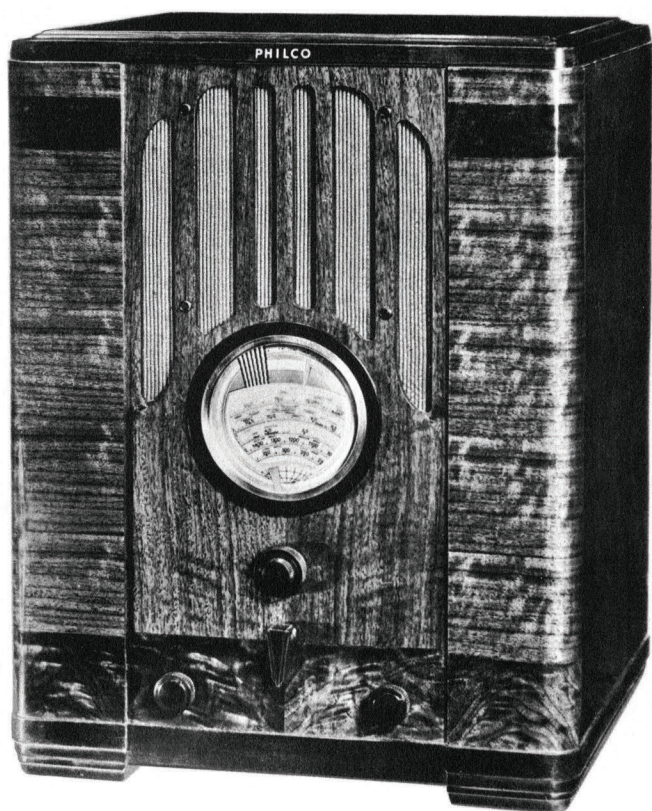
Philco Inclined Sounding Board.

Four-Point Tone Control.

Concert Grand Electro-Dynamic Speaker.

Two-Speed Vernier Tuning . . Variable Bass Compensation . . Three Times Greater Overall Selectivity . . Philco Unit Construction . . Automatic Volume Control . . Noise-Excluding Signal Amplifier.

Sealed Cabinet with Protective Back Shield.



Philco Spread-Band 2670B

American and Foreign

With Long-Wave Tuning Range

Philco Spread-Band 2670B

American and Foreign

The Philco 2670B provides exceptionally efficient coverage of the Long-Wave Tuning Range between 150 and 395 kilocycles in addition to the standard broadcast band and short-wave channels. The center portion of the instrument is of figured walnut . . while a wide band of butt walnut enriches the base. This effect is repeated at the top of the pilasters by the use of narrower strips of butt walnut. Base and top mouldings are of slightly darker contrasting tone.

21 $\frac{1}{4}$ " high 16 $\frac{1}{8}$ " wide 14" deep

FEATURES OF THE 2670B INCLUDE :

Five Spread-Band Tuning Ranges cover Standard American Broadcasts . . Day and Night Foreign and American Short-Wave Broadcasts . . Long-Wave Foreign Broadcasts and U. S. Weather Reports . . State and Municipal Police . . Aviation . . Ship and Amateur.

Philco Balanced Superheterodyne Circuit with 11 Philco High-Efficiency Tubes.

Spread-Band Dial. Short-Wave stations spread more than four times farther apart . . named and located in color.

Push-Pull Audio System.

Shadow Tuning.

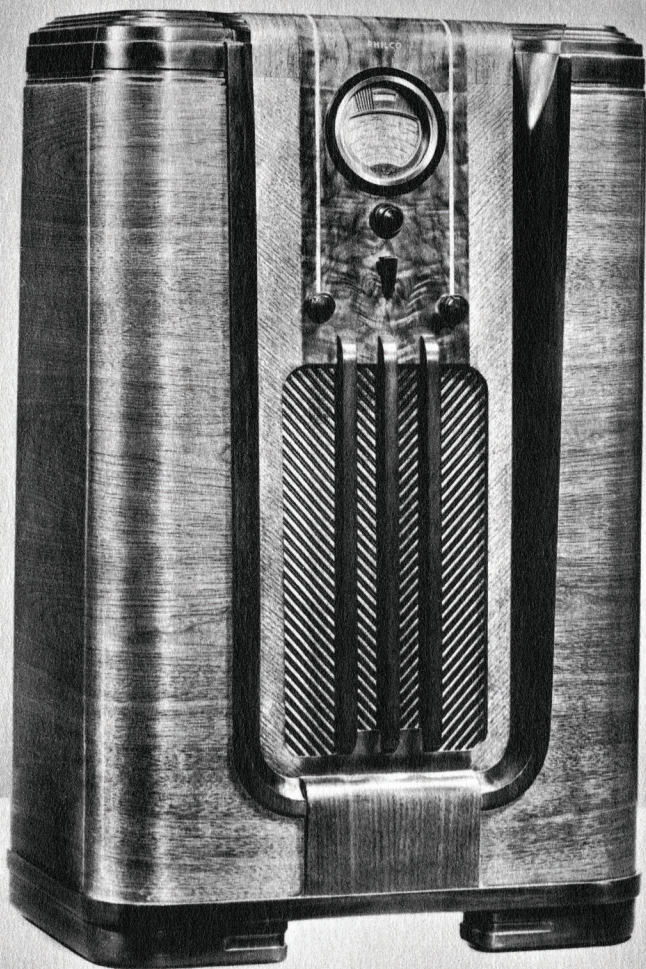
Philco Foreign Tuning System.

Glowing Beam Tuning Range Indicator.

Four-Point Tone Control.

Standard Electro-Dynamic Speaker.

Two-Speed Vernier Tuning . . Variable Bass Compensation . . Three Times Greater Overall Selectivity . . Philco Unit Construction . . Automatic Volume Control . . Noise-Excluding Signal Amplifier.



Philco Spread-Band 665X

American and Foreign

With Ultra-Short-Wave Tuning Range

Philco Spread-Band 2650X

*Similar American and Foreign with Long-Wave
Tuning Range*

Philco 665X

American and Foreign

In addition to the coverage of Standard Broadcasts and Short-Wave stations of other American and Foreign Philcos, the 665x provides reception on the Ultra-Short-Wave channels between 25 and 42 megacycles. Increasing use of these frequencies for experimental purposes has created a demand for a receiver covering them . . . and in the 665x, Philco provides that coverage, plus realistic reproduction of Standard American Broadcasts through the Philco Inclined Sounding Board.

39 $\frac{1}{4}$ " high 25" wide 14" deep

FEATURES OF THE 665X INCLUDE :

Push-Pull Audio System.

Four Tuning Ranges cover Standard American Broadcasts . . . State and Municipal Police . . . Day and Night Foreign and American Short-Wave Broadcasts . . . First-Class Amateur Day and Night Bands . . . Aviation . . . Ship . . . and the Ultra-Short-Wave Broadcasts between 25 and 42 Megacycles!

Philco Foreign Tuning System.

Philco Spread-Band Dial . . . foreign and domestic short-wave stations named and located in color.

Glowing Beam Tuning Range Indicator.

Shadow Tuning.

Philco Inclined Sounding Board.

Philco Balanced Superheterodyne Circuit with 9 Philco High-Efficiency Tubes.

Four-Point Tone Control.

Concert Grand Electro-Dynamic Speaker.

Sealed Cabinet with Protective Back Shield.

Two-Speed Vernier Tuning . . . Variable Bass Compensation . . . Three Times Greater Overall Selectivity . . . Philco Unit Construction . . . Automatic Volume Control . . . Noise-Excluding Signal Amplifier.

FEATURES OF THE 2650X INCLUDE :

In the same cabinet as the 665x, this is an 8-tube Philco Inclined Sounding Board Model with Four Tuning Ranges, covering Long-Wave Foreign Broadcasts and U. S. Weather Reports in addition to Standard American Broadcasts . . . State Police . . . Day and Night Foreign and American Short-Wave Broadcasts . . . Day Aviation and Day First-Class Amateur. Other features are similar to those of the 665 described above.



Philco Spread-Band 665B

American and Foreign

With Ultra-Short-Wave Tuning Range

Philco Spread-Band 2650B

*Similar American and Foreign with Long-Wave
Tuning Range*

Philco 665B

A smoothly bent walnut top and side panel is set on to a frame shaped to form a continuous curved moulding around the front panel. The instrument panel of figured walnut, and the handsome grille are framed by walnut pilasters. A two-tone effect is achieved by a darker base moulding. Hand-rubbed finish.

20 $\frac{1}{4}$ " high 15 $\frac{7}{8}$ " wide 11 $\frac{5}{8}$ " deep

FEATURES OF THE 665B INCLUDE :

Push-Pull Audio System.

Four Tuning Ranges cover Standard American Broadcasts . . State and Municipal Police . . Day and Night Foreign and American Short-Wave Broadcasts . . First-Class Amateur Day and Night Bands . . Aviation . . Ship . . and the Ultra-Short-Wave Broadcasts between 25 and 42 Megacycles!

Philco Foreign Tuning System.

Philco Spread-Band Dial . . foreign and domestic short-wave stations named and located in color.

Glowing Beam Tuning Range Indicator.

Shadow Tuning.

Philco Balanced Superheterodyne Circuit with 9 Philco High-Efficiency Tubes.

Four-Point Tone Control.

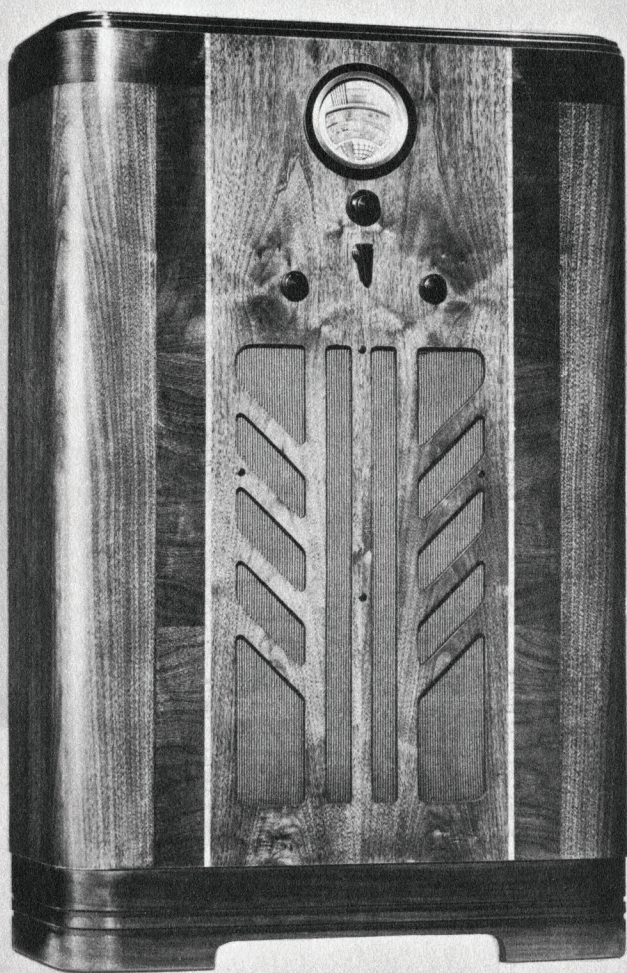
Standard Electro-Dynamic Speaker.

Two-Speed Vernier Tuning . . Variable Bass Compensation . . Three Times Greater Overall Selectivity . . Philco Unit Construction . . Automatic Volume Control . . Noise-Excluding Signal Amplifier.

FEATURES OF THE 2650B INCLUDE :

In the same cabinet as the 665B, this is an 8-tube Philco Baby Grand with Four Tuning Ranges covering Long-Wave Foreign Broadcasts and U. S. Weather Reports in addition to Standard American Broadcasts . . State Police . . Day and Night Foreign and American Short-Wave Broadcasts . . Day Aviation and Day First-Class Amateur Bands.

Other features are similar to those of the 665B described above.



Philco Spread-Band 630K

American and Foreign

Philco 2630K

*Similar American and Foreign with additional
Long-Wave Tuning Range*

Philco Spread-Band 630K

American and Foreign

An entirely new cabinet of stunning design! Half-round walnut of vertical grain comprises the greatest part of the instrument panel, with half-round walnut of horizontal grain forming contrasting bands on each side of the grille. Narrawood inlays add distinction, while an unusual herringbone effect is created in the grille by slanting ribs on each side of the central vertical members. Hand-rubbed finish.

39 $\frac{3}{4}$ " high 25" wide 10 $\frac{3}{8}$ " deep

FEATURES OF THE 630K INCLUDE:

Philco Shadow Tuning.

Philco Foreign Tuning System.

Philco Spread-Band Dial names and locates foreign and domestic short-wave stations in color.

Sealed Cabinet with Protective Back Shield.

Glowing Beam Tuning Range Indicator.

Philco Balanced Superheterodyne Circuit with 6 Philco High-Efficiency Tubes.

Three Tuning Ranges cover Standard American Broadcasts . . State and Municipal Police . . Day and Night Foreign and American Short-Wave Broadcasts . . Aviation . . Ship . . and Day and Night First-Class Amateur Bands.

Pentode Audio System.

Three-Point Tone Control.

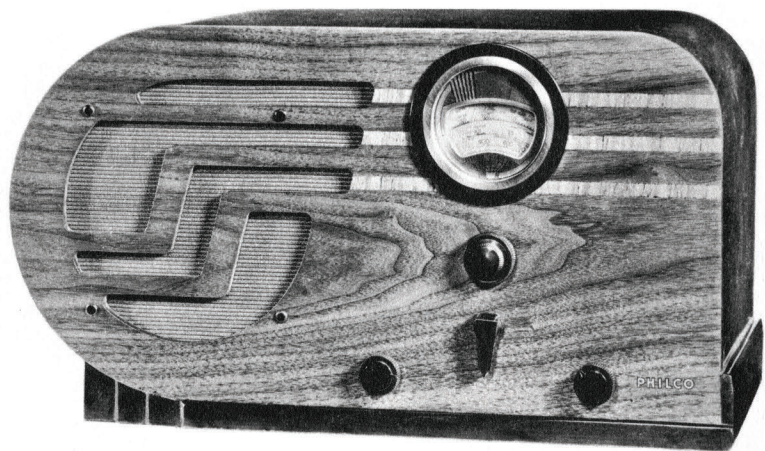
Concert Grand Electro-Dynamic Speaker.

Two-Speed Vernier Tuning . . Variable Bass Compensation . . Double Overall Selectivity . . Philco Unit Construction . . Automatic Volume Control . . Noise-Excluding Signal Amplifier.

★ ★ ★

Philco 2630K

Similar to the 630K except that a Long-Wave Tuning Range (150 to 395 kilocycles) covering U. S. Weather Reports and foreign long-wave broadcasts is substituted for Municipal Police and some Amateur and Aviation Bands.



Philco Spread-Band 620T

American and Foreign

Philco 2620T

*Similar American and Foreign with additional
Long-Wave Tuning Range*

Philco Spread-Band 620T

American and Foreign

A new and modern cabinet equally suitable for book-shelf or table. Instrument panel of sliced walnut, set off by three horizontal bands of narrawood inlay, makes a pleasing contrast with the darker toned base. Hand-rubbed finish.

11 $\frac{1}{4}$ " high 20 $\frac{1}{2}$ " wide 9 $\frac{1}{4}$ " deep

FEATURES OF THE 620T INCLUDE :

Noise-Excluding Signal Amplifier (Robot Tuner) automatically amplifies the station signal while rejecting interference and image noise.

Philco Foreign Tuning System.

Philco Spread-Band Dial names and locates foreign and domestic short-wave stations in color.

Pentode Audio System.

Three Tuning Ranges cover Standard American Broadcasts . . State and Municipal Police . . Day and Night Foreign and American Short-Wave Broadcasts . . Aviation . . Ship . . and Day and Night First-Class Amateur Bands.

Glowing Beam Tuning Range Indicator . . Three-Point Tone Control . . Standard Electro-Dynamic Speaker.

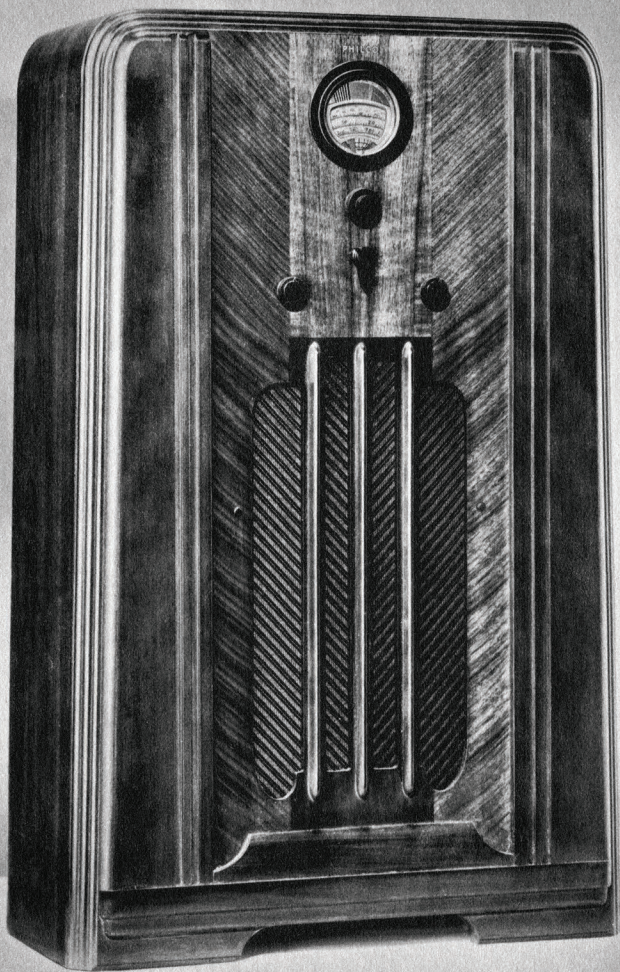
Philco Balanced Superheterodyne Circuit with 6 Philco High-Efficiency Tubes.

Two-Speed Vernier Tuning . . Variable Bass Compensation . . Double Overall Selectivity . . Philco Unit Construction . . Automatic Volume Control.

★ ★ ★

Philco 2620T

Identical with the 620 except that a Long-Wave Tuning Range (150 to 395 kilocycles) covering U. S. Weather Reports and foreign long-wave broadcasts is substituted for Municipal Police and some Amateur and Aviation Bands.



Philco Spread-Band 610J
American and Foreign

Philco Spread-Band 610J

American and Foreign

A distinctive streamlined cabinet. Instrument panel of figured butt walnut bordered by sides of "V" matched straight-grained walnut.

37" high

23⁵/₈" wide

10⁵/₈" deep

FEATURES OF THE 610J INCLUDE :

Three Tuning Ranges cover Standard American Broadcasts . . State and Municipal Police . . Day and Night Foreign and American Short-Wave Broadcasts . . Aviation . . Ship . . Day and Night First-Class Amateur Bands.

Three-Point Tone Control to adjust the radio to receive every program at its best.

Philco Foreign Tuning System.

Philco Spread-Band Dial names and locates foreign stations in color for convenient, accurate, rapid tuning!

Pentode Audio System.

Oversize Electro-Dynamic Speaker.

Glowing Beam Tuning Range Indicator shows tuning range in use.

Philco Balanced Superheterodyne Circuit with 5 Philco High-Efficiency Tubes.

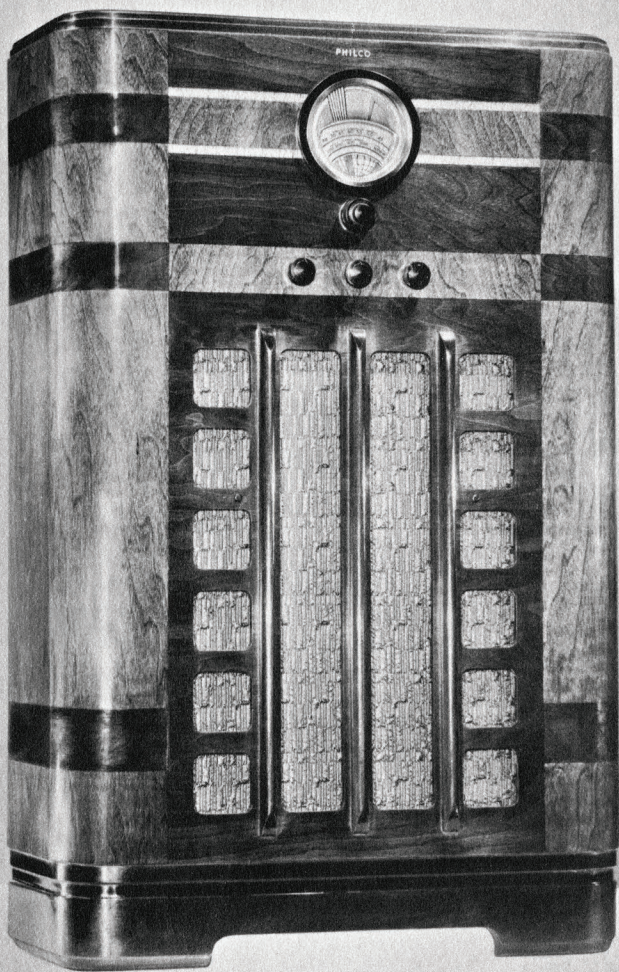
Sealed Cabinet with Protective Back Shield.

Two-Speed Vernier Tuning . . Variable Bass Compensation . . Greater Overall Selectivity . . Philco Unit Construction . . Automatic Volume Control.

★ ★ ★

Philco 610B

The 610 chassis in a baby grand cabinet similar to 89B.



Philco 89K
American Receiver

Philco 89K

American Receiver

The design sets an entirely new note in radio cabinetry, and the rectangular effect which characterizes the grille is repeated in contrasting panels of the rotary walnut which forms the entire front of the cabinet.

39 $\frac{3}{4}$ " high 25" wide 10 $\frac{3}{8}$ " deep

FEATURES OF THE 89K INCLUDE :

Philco Superheterodyne Circuit with 6 Philco High-Efficiency Tubes.

Two Tuning Ranges cover Standard American Broadcasts . . with highly efficient reception of the interesting Second-Class Amateur Band . . State and Municipal Police . . and some Night Aviation.

Noise-Excluding Signal Amplifier (Robot Tuner) automatically amplifies the station signal while rejecting interference and image noise.

Improved Wide-Vision Dial. A great convenience and a great aid to accurate tuning.

Glowing Beam Station Finder.

Oversize Electro-Dynamic Speaker.

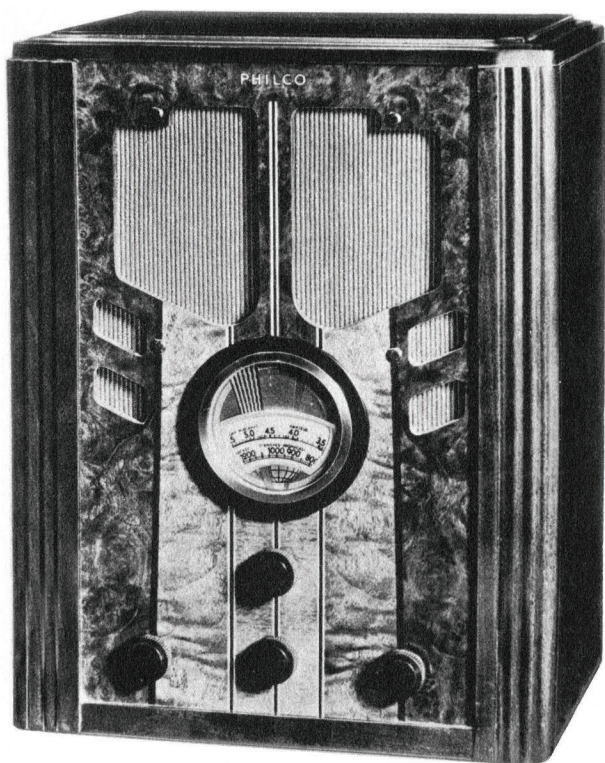
Sealed Cabinet with Protective Back Shield.

Pentode Audio System.

Two-Point Tone Control.

Adapted for use with the Philco Utility Aerial.

Reduction Gear Tuning . . Double Overall Selectivity . . Philco Unit Construction . . Automatic Volume Control.



Philco 89B
American Receiver

Philco 89B

American Receiver

The 89B is housed in a Baby Grand cabinet that is as smart in appearance as it is brilliant in performance. Philco reproductions of matched burl, butt and straight-grained walnut, with holly and black inlays on the instrument panel and grille.

17" high 13⁵/₈" wide 9¹/₈" deep

FEATURES OF THE 89B INCLUDE :

Philco Superheterodyne Circuit with 6 Philco High-Efficiency Tubes.

Two Tuning Ranges cover Standard American Broadcasts . . with highly efficient reception of the interesting Second-Class Amateur Band . . State and Municipal Police . . and some Night Aviation.

Noise-Excluding Signal Amplifier (Robot Tuner) automatically amplifies the station signal while rejecting interference and image noise.

Improved Wide-Vision Dial. A great convenience and a great aid to accurate tuning.

Glowing Beam Station Finder.

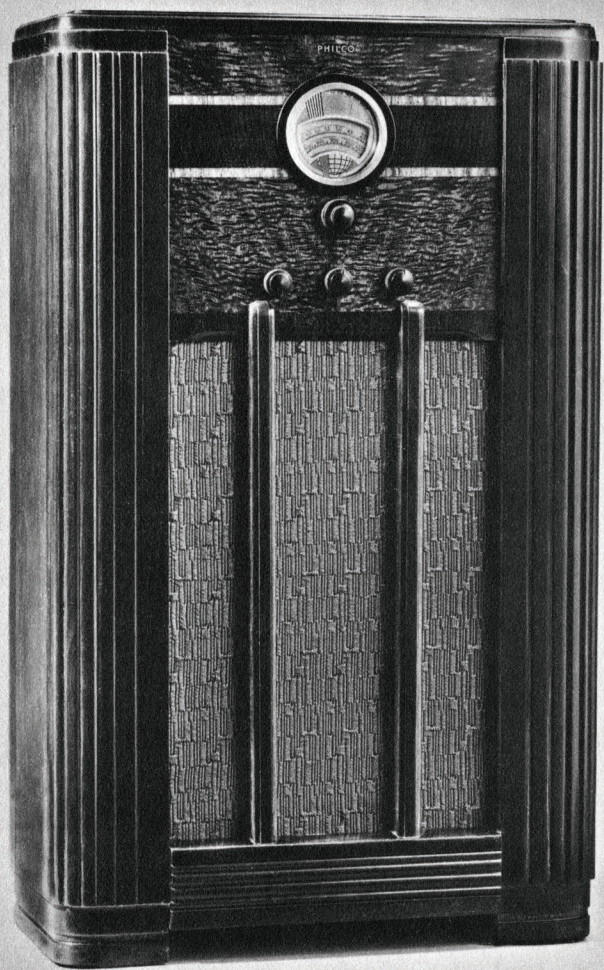
Standard Electro-Dynamic Speaker.

Pentode Audio System.

Two-Point Tone Control.

Adapted for use with the Philco Utility Aerial.

Reduction Gear Tuning . . Double Overall Selectivity . . Philco Unit Construction . . Automatic Volume Control.



Philco 60F
American Receiver

Philco 60F

American Receiver

Without a single reservation . . . the finest F cabinet that Philco has ever offered! No picture can do justice to the richness of its instrument panel . . . a beautiful combination of American Walnut and reproduced Australian Butt, with a reproduced Laurel horizontal panel edged by narrawood inlays centering attention on the large Color Dial.

This is a model that is entitled to an exceptionally high place from the standpoint of performance, too. American and foreign reception . . . a cabinet that is definitely a knock-out . . . at a price that makes "sensational" the only right word!

38 $\frac{1}{8}$ " high 22 $\frac{7}{8}$ " wide 10 $\frac{1}{8}$ " deep

FEATURES OF THE 60F INCLUDE :

Philco Balanced Superheterodyne Circuit with 5 Philco High-Efficiency Tubes.

Two Tuning Ranges cover Standard American Broadcasts . . . State and Municipal Police . . . Night and Day Aviation . . . Night First-Class Amateur . . . many American and Foreign Short-Wave Broadcasts.

Pentode Audio System.

Standard Electro-Dynamic Speaker.

Glowing Beam Station Finder.

Two-Point Tone Control.

Sealed Cabinet with Protective Back Shield.

Improved Wide-Vision Dial.

Automatic Volume Control.

Reduction Gear Tuning.

Greater Overall Selectivity.

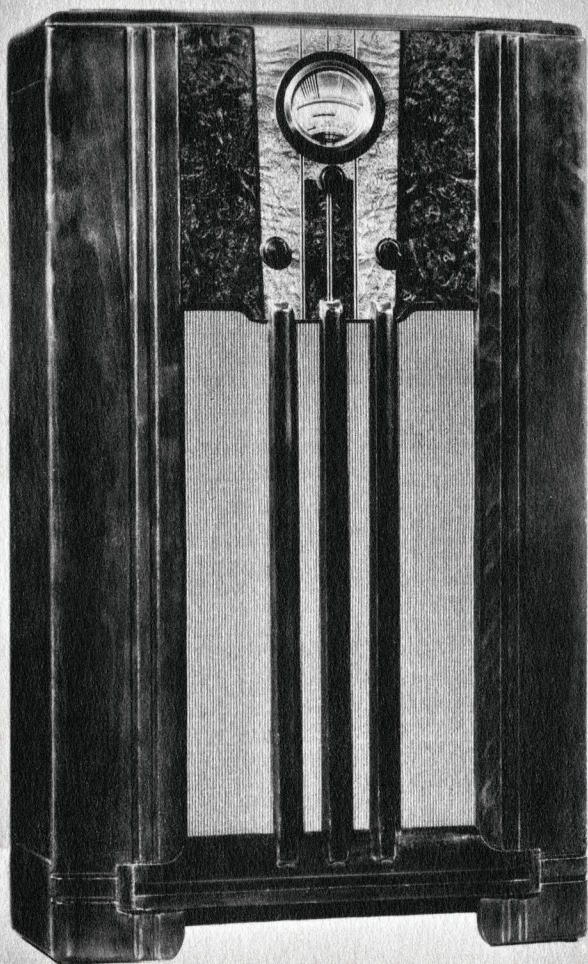
Philco Unit Construction.

Adapted for use with Philco Utility Aerial.

★ ★ ★

Philco 60B

Similar chassis in same cabinet as 89B.



Philco 62F
American Receiver

Philco 62F

American Receiver

The instrument panel of the 62F is a reproduction of butt walnut and straight-grained walnut flowing smoothly into the speaker opening, which is distinguished by the simplicity and rich toning of the three grille posts. Only Philco could give you such a solid value!

37 $\frac{1}{4}$ " high 21 $\frac{7}{8}$ " wide 10" deep

FEATURES OF THE 62F INCLUDE :

Philco Superheterodyne Circuit with 5 Philco High-Efficiency Tubes.

Two Tuning Ranges cover Standard American Broadcasts . . State and Municipal Police . . Second-Class Amateur.

Pentode Audio System.

Automatic Volume Control.

Standard Electro-Dynamic Speaker.

Improved Wide-Vision Dial.

Glowing Beam Station Finder.

Reduction Gear Tuning.

Adapted for use with Philco Utility Aerial.



Philco 62T
American Receiver



Philco 93B
American Receiver

Philco 62T

American Receiver

The instrument panel with its reproductions of East Indian Rosewood, Australian Butt and narrawood inlays makes this just about the richest looking small set that ever went on a table or book-shelf!

10" high 15 $\frac{3}{4}$ " wide 8 $\frac{5}{8}$ " deep

FEATURES OF THE 62T INCLUDE :

Philco Superheterodyne Circuit with 5 Philco High-Efficiency Tubes.

Two Tuning Ranges cover Standard American Broadcasts . . State and Municipal Police . . Second-Class Amateur.

Pentode Audio System.

Automatic Volume Control.

Standard Electro-Dynamic Speaker.

Improved Wide-Vision Dial.

Glowing Beam Station Finder.

Reduction Gear Tuning.

Adapted for use with Philco Utility Aerial.

Philco 93B

American Receiver

The 93B cabinet is a handsome combination of authentic reproductions of burl and butt walnut, ivory and ebonized holly. It's a *real* Philco . . and what higher praise can there be?

14 $\frac{1}{2}$ " high 12 $\frac{1}{8}$ " wide 7 $\frac{3}{4}$ " deep

FEATURES OF THE 93B INCLUDE :

Pentode Audio System.

Standard Electro-Dynamic Speaker.

Illuminated Dial.

Double Overall Selectivity.

Automatic Volume Control.

Ball Bearing Tuning.

Tuning Range covers all Standard Broadcasts and State Police.

Philco Balanced Superheterodyne Circuit with 5 Philco High-Efficiency Tubes.

Adapted for use with Philco Utility Aerial.



Philco 15CS

American and Foreign

Philco 14CS

American Receiver

For AC-DC Operation

Philco 15CS

American and Foreign

This chairside model strikes a new note in cabinet design. One end of the graceful oval houses the chassis, while the opposite end opens into shelves on which books, ash trays or cigarette boxes may be placed. Sliced walnut is used throughout in a rich satin finish.

19 $\frac{1}{8}$ " high

15 $\frac{1}{2}$ " wide

24 $\frac{3}{4}$ " deep

FEATURES OF THE 15CS INCLUDE :

Two Tuning Ranges cover Standard American Broadcasts . . State Police . . Day and Night Foreign and American Short-Wave Broadcasts . . Day First-Class Amateur . . Ship.

Philco Superheterodyne Circuit with 5 Philco High-Efficiency Tubes.

Pentode Audio System.

Automatic Volume Control.

Standard Electro-Dynamic Speaker.

Illuminated Full-Vision Dial.

Reduction Gear Tuning.

Adapted for use with Philco Utility Aerial.

★ ★ ★

In the same cabinet

Philco 14CS

For AC-DC operation

Features duplicate those of the 15cs except that the 14cs operates on either AC or DC and the two Tuning Ranges cover Standard American Broadcasts . . State and Municipal Police . . First-Class Amateur (Night) and many Night Foreign and American Short-Wave Broadcasts.



Philco 15T
American and Foreign

Philco 14T
American Receiver
For AC-DC operation

Philco 12T
American Receiver

Philco 15T

American and Foreign

Housed in a cabinet of sliced walnut with Zebrano inlays . . with the speaker grille sweeping from the instrument panel around the side!

8" high

11 $\frac{5}{8}$ " wide

6 $\frac{1}{8}$ " deep

FEATURES OF THE 15T INCLUDE :

Two Tuning Ranges cover Standard American Broadcasts . . State Police . . Day and Night Foreign and American Short-Wave Broadcasts . . Day First-Class Amateur . . Ship.

Philco Superheterodyne Circuit with 5 Philco High-Efficiency Tubes.
Pentode Audio System.

Automatic Volume Control.

Compact Electro-Dynamic Speaker.

Illuminated Full-Vision Dial.

Reduction Gear Tuning.

Adapted for use with Philco Utility Aerial.

★ ★ ★

In the same cabinet

Philco 14T

For AC-DC operation

Features duplicate those of the 15T except that the 14T operates on either AC or DC and the two Tuning Ranges cover Standard American Broadcasts . . State and Municipal Police . . First-Class Amateur (Night) and many Night Foreign and American Short-Wave Broadcasts.

★ ★ ★

In the same cabinet

Philco 12T

American Receiver

Tuning coverage and features are identical with the 12C . . but the "around-the-corner" grille cabinet is an extra added attraction that has a special appeal to many listeners.



Philco 12C
American Receiver

Philco 12C

American Receiver

Here's a Philco Compact . . . *with Automatic Volume Control* . . . and a striking new Illuminated Full-Vision Dial . . . in a cabinet of sliced walnut with narrawood inlays. A treat to the eye . . . and to the ear.

8" high 11 $\frac{5}{8}$ " wide 6 $\frac{1}{8}$ " deep

FEATURES OF THE 12C INCLUDE :

Philco Superheterodyne Circuit with 5 Philco High-Efficiency Tubes.

Tuning Range covers Standard American Broadcasts and State Police.

Pentode Audio System.

Automatic Volume Control.

Compact Electro-Dynamic Speaker.

Illuminated Full-Vision Dial.

Reduction Gear Tuning.

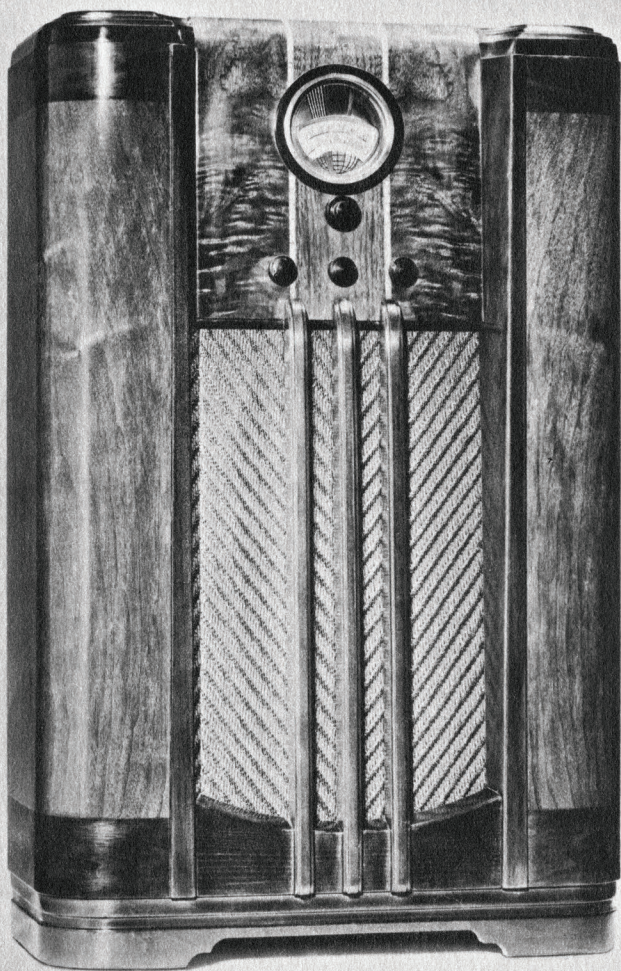
Adapted for use with Philco Utility Aerial.

★ ★ ★

Philco 12C

(Ivory)

A beautiful new Philco Compact finished in ivory with features and cabinet duplicating the 12C described above.



Philco 38X

*American and Foreign
For Battery Operation*

Philco 39X

For 6-volt Operation

Philco 40X

For 6-volt and 110-volt AC Operation

Philcos 38X, 39X and 40X

American and Foreign

Now farmers and others with unwired homes can enjoy all the tonal richness that the Philco Inclined Sounding Board assures . . . at a price considerably below any previous quotation.

In the 39x . . . for 6-volt operation . . . Philco introduces a new Synchronous Self-Rectifying Vibrator with a much longer life than any vibrator ever before produced!

And in the 40x . . . Philco gives the perfect answer to the problem of the unwired farm home which expects the early arrival of the power lines! It can be operated on a 6-volt battery or instantly switched over for regular 110-volt AC operation!

38x, 39x and 40x are housed in the 8x cabinet

39½" high 24¾" wide 11⅛" deep

FEATURES OF MODELS 38X, 39X AND 40X INCLUDE:

Class B Push-Pull Triode Audio System in 38 and 39. Pentode Audio System in 40. True, clear, undistorted tone on speech and music and power unequalled on battery sets.

Philco Balanced Superheterodyne Circuit with 6 Philco High-Efficiency Tubes.

Automatic Volume Control.

Philco Inclined Sounding Board.

Sealed Cabinet with Protective Back Shield.

Concert Grand Permanent Field Dynamic Speaker.

Glowing Beam Station Finder.

Philco Color Dial names and locates foreign and domestic short-wave stations.

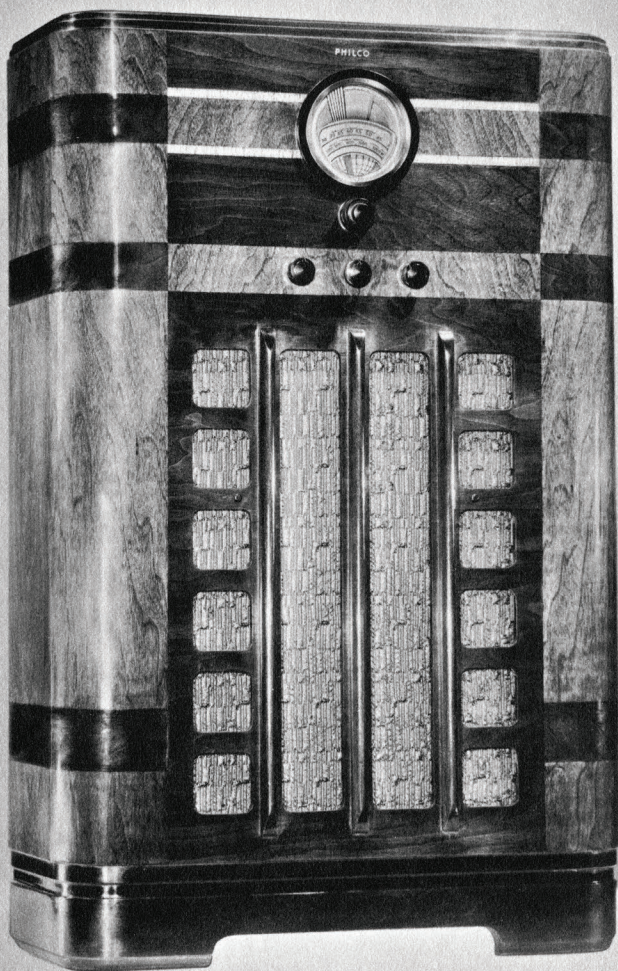
Two-Point Tone Control.

Greater Overall Selectivity.

Reduction Gear Tuning

New Synchronous Self-Rectifying Vibrator on 39 and 40. Greatly reduces current drain while increasing output.

Two Tuning Ranges cover Standard American Broadcasts . . . State Police . . . Day and Night Foreign and American Short-Wave Broadcasts . . . Day First-Class Amateur . . . Ship.



Philco 38K

*American and Foreign
For Battery Operation*

Philco 39K

For 6-volt Battery Operation

Philco 40K

For 6-volt and 110-volt AC Operation

Philcos 38K, 39K and 40K

American and Foreign

The 38K, 39K and 40K are housed in the same smart cabinet as the 9K.

39 $\frac{3}{4}$ " high 25" wide 10 $\frac{3}{8}$ " deep

FEATURES OF MODELS 38K, 39K AND 40K INCLUDE:

The features of these sets are identical with the exceptions noted. The 38K is for regular battery operation. The 39K is designed for 6-volt operation . . . no B or C batteries required. The 40K is designed for both 6-volt battery and 110-volt AC operation.

Class B Push-Pull Triode Audio System in 38 and 39. Pentode Audio System in 40. True, clear, undistorted tone on speech and music and power unequalled on battery sets.

Philco Balanced Superheterodyne Circuit with 6 Philco High-Efficiency Tubes.

Automatic Volume Control.

Sealed Cabinet with Protective Back Shield.

Concert Grand Permanent Field Dynamic Speaker.

Glowing Beam Station Finder.

Philco Color Dial names and locates foreign and domestic short-wave stations.

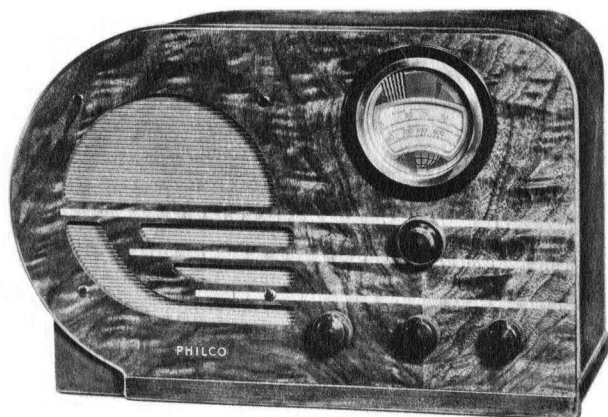
Two-Point Tone Control.

Greater Overall Selectivity.

Reduction Gear Tuning.

New Synchronous Self-Rectifying Vibrator on 39 and 40. Greatly reduces current drain while increasing output.

Two Tuning Ranges cover Standard American Broadcasts . . . State Police . . . Day and Night Foreign and American Short-Wave Broadcasts . . . Day First-Class Amateur . . . Ship.



Philco 38T
*American and Foreign
For Battery Operation*



Philco 39T
*American and Foreign
For 6-volt Battery Operation*

Philco 40T
For 6-volt and 110-volt AC Operation

Philco 38T, 39T and 40T

American and Foreign

The 38T for regular battery operation is housed in the same smartly styled cabinet as the 10T while the 39T and 40T are in a Platinum Walnut Cabinet similar to the 7T. The 39T is for 6-volt operation. The 40T for either 6-volt or 110-volt AC operation—an ideal set for use in a trailer.

38T	11" high	16 $\frac{3}{4}$ " wide	9" deep
39T and 40T	11 $\frac{1}{4}$ " high	17 $\frac{1}{4}$ " wide	9 $\frac{3}{4}$ " deep

FEATURES OF MODELS 38T, 39T AND 40T INCLUDE:

Class B Push-Pull Triode Audio System in 38 and 39. Pentode Audio System in 40. True, clear, undistorted tone on speech and music and power unequalled on battery sets.

Philco Balanced Superheterodyne Circuit with 6 Philco High-Efficiency Tubes.

Automatic Volume Control.

Standard Speaker.

Glowing Beam Station Finder.

Philco Color Dial names and locates foreign and domestic short-wave stations.

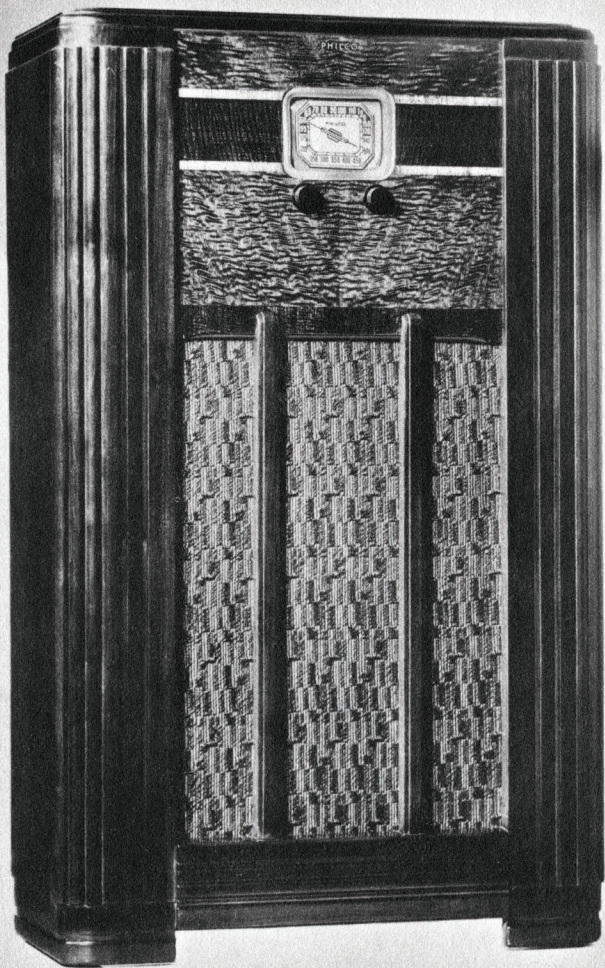
Two-Point Tone Control.

Greater Overall Selectivity.

Reduction Gear Tuning.

New Synchronous Self-Rectifying Vibrator on 39 and 40. Greatly reduces current drain while increasing output.

Two Tuning Ranges cover Standard American Broadcasts . . State Police . . Day and Night Foreign and American Short-Wave Broadcasts . . Day First-Class Amateur . . Ship.



Philco 33F

*American Receiver
For Battery Operation*

Philco 34F

For 6-volt Battery Operation

Philco 35F

For 6-volt and 110-volt AC Operation

Philcos 33F, 34F and 35F

American Receivers

The console housing the 33F, 34F and 35F is distinguished for the richness of its instrument panel . . . a beautiful combination of American Walnut and reproduced Australian Butt, with a reproduced Laurel horizontal panel edged by narrawood inlays centering attention on the large Color Dial.

38 $\frac{1}{8}$ " high

22 $\frac{7}{8}$ " wide

10 $\frac{1}{8}$ " deep

FEATURES OF THE 33F, 34F AND 35F INCLUDE:

The features of these sets are identical with the exception noted. The 33F is for regular battery operation. The 34F is designed for 6-volt operation . . . no B or C batteries required. The 35F is for both 6-volt and 110-volt AC operation.

Standard Permanent Field Dynamic Speaker.

Sealed Cabinet. The Protective Back Shield is a feature having an especial appeal to women.

Push-Pull Pentode Audio System.

Automatic Volume Control.

Philco Balanced Superheterodyne Circuit with 5 Philco High-Efficiency Tubes.

Reduction Gear Tuning.

New Type Synchronous Self-Rectifying Vibrator of amazingly long life is used on the 34 and 35.

Tuning Range covers all Standard American Broadcasts and State Police calls.



Philco 33B

*American Receiver
For Battery Operation*

Philco 34B

For 6-volt Operation

Philco 35B

For 6-volt and 110-volt AC Operation

Philcos 33B, 34B and 35B

American Receivers

Five tubes, a Push-Pull Audio System, Automatic Volume Control . . . battery-operated radios that have more really worthwhile features than have ever been combined at the price! And they look as good as they sound.

The 33B is for regular battery operation. The 34B is the 6-volt companion to the 33B. The 35B, also in the same cabinet, can be instantly switched from 6-volt battery to 110-volt AC operation and is a perfect radio for trailers and for farms awaiting electrification.

14 $\frac{7}{8}$ " high

12 $\frac{1}{8}$ " wide

8 $\frac{1}{8}$ " deep

FEATURES OF MODELS 33 - 33, 34 - 34 AND 35 - 35 INCLUDE :

New Type Magnetic Speaker.

Push-Pull Pentode Audio System.

Automatic Volume Control.

Philco Balanced Superheterodyne Circuit with 5 Philco High-Efficiency Tubes.

Reduction Gear Tuning.

New Type Synchronous Self-Rectifying Vibrator of amazingly long life is used on the 34 and 35.

Tuning Range covers all Standard American Broadcasts and State Police calls.



Philco 623K
American and Foreign
For Battery Operation

Philco 624K
American and Foreign
For 6-volt Operation

Philco 623K

*American and Foreign
For Battery Operation*

Philco 624K

*American and Foreign
For 6-volt Operation*

The 623 and 624, in the beautiful "K" cabinet, are battery-operated sets that deliver outstanding short-wave reception in addition to magnificent performance on the standard broadcast band.

39 $\frac{3}{4}$ " high 25" wide 10 $\frac{3}{8}$ " deep

The features of these sets are identical with the exception that the 624 series is designed for 6-volt operation . . . no B or C batteries required. The 623 models are for regular battery operation.

Three Tuning Ranges cover Standard American Broadcasts . . . State and Municipal Police . . . Day and Night Foreign and American Short-Wave Broadcasts . . . Aviation . . . Ship . . . Day and Night First-Class Amateur.

Noise-Excluding Signal Amplifier.

Philco Foreign Tuning System.

Sealed Cabinet with Protective Back Shield.

Philco Color Dial names and locates foreign and domestic short-wave stations.

Class "B" Push-Pull Audio System for battery economy.

Concert Grand Permanent Field Dynamic Speaker.

Philco Balanced Superheterodyne Circuit . . . 6 Philco High-Efficiency Tubes.

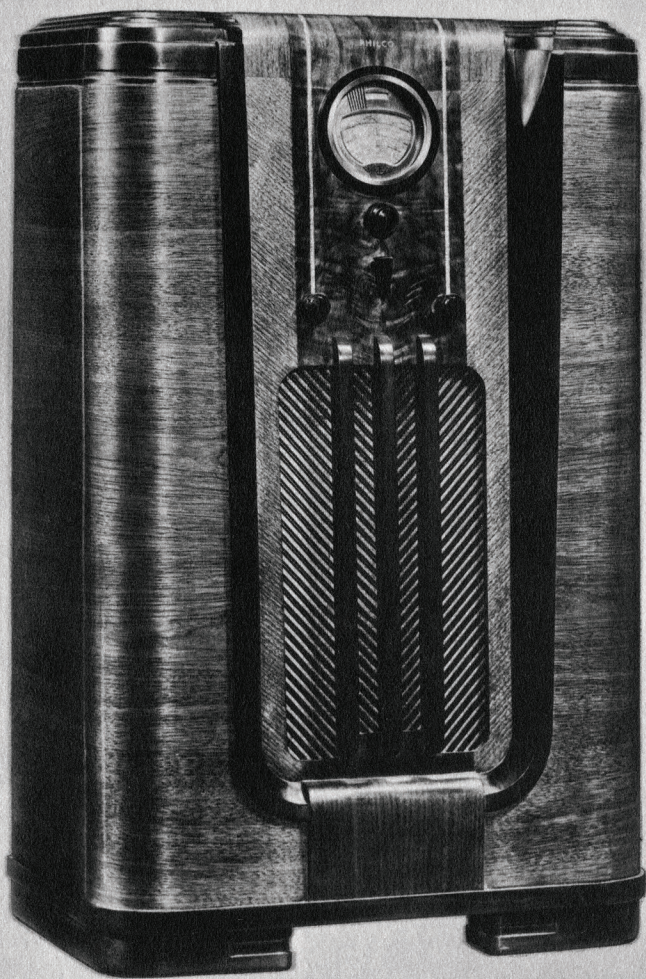
Three-Point Tone Control.

Glowing Beam Tuning Range Indicator. Two-Speed Vernier Tuning . . . Variable Bass Compensation . . . Double Overall Selectivity . . . Philco Unit Construction . . . Automatic Volume Control.

★ ★ ★

Philco 623T and 624T

Similar Chassis in the same attractive cabinet as the 620T.



Philco Spread-Band 643x

*American and Foreign
For Battery Operation*

Philco 643X

American and Foreign

The greatest battery-operated radio ever built . . . and that's putting it mildly. For the 643x has *everything* . . . the Inclined Sounding Board, Four Spread-Band Tuning Ranges, the new Sealed Cabinet with Protective Back, Shadow Tuning . . . all that anyone could ask in a radio.

39 $\frac{1}{4}$ " high 25" wide 14" deep

FEATURES OF THE 643X INCLUDE :

Class "B" Push-Pull Audio System for battery economy. True, clear, undistorted tone on speech and music. Power unequalled on battery sets. **Sealed Cabinet** with Protective Back Shield.

Philco Spread-Band Dial with foreign stations named, located and spread four times farther apart.

Philco Inclined Sounding Board.

Philco Foreign Tuning System.

Shadow Tuning.

Philco Balanced Superheterodyne Circuit with 7 Philco High-Efficiency Tubes.

Concert Grand Permanent Field Dynamic Speaker.

Four-Point Tone Control.

Glowing Beam Tuning Range Indicator.

Four Tuning Ranges cover Standard American Broadcasts . . . State and Municipal Police . . . Day and Night Foreign and American Short-Wave Broadcasts . . . Night and Day Aviation and Night and Day First-Class Amateur Bands.

Two-Speed Vernier Tuning . . . Variable Bass Compensation . . . Three Times Greater Overall Selectivity . . . Philco Unit Construction . . . Automatic Volume Control . . . Noise-Excluding Signal Amplifier.

★ ★ ★

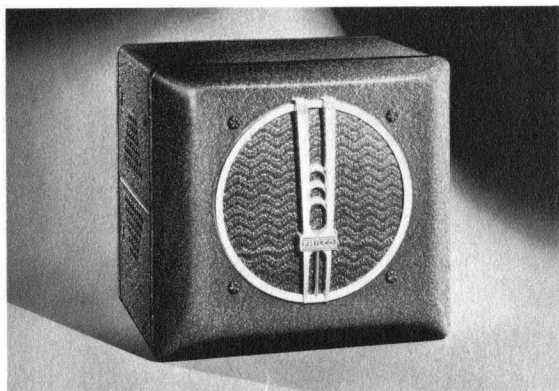
Philco Spread-Band 643B

Similar Chassis in 5B Cabinet.



PHILCO AUTO RADIO

Philco offers a choice of five superb models . . . designed to meet every purse and purpose. All five of these new Philcos are superheterodynes, complete with special multi-function Philco High-Efficiency Tubes, Electro-Dynamic Speaker and Automatic Volume Control. They can be quickly and easily



MODEL 827

installed in ANY car, regardless of make, model or year—or transferred from one car to another.

Make dull roads brighter and long trips shorter with a new Philco Auto Radio—the exclusive choice of 32 great car manufacturers in the United States, Canada and Europe!

(Other Philco Auto Radios—Models 826, 827K, 828, 828K.)



Philco Electric Automatic-Control Clock

Starts and stops a radio or any electrical appliance at pre-selected intervals . . . with Philco precision and dependability.

★ ★ ★

The new Philco Electric Automatic-Control Clock is a precision, quality instrument . . . extremely simple in operation . . . absolutely trouble-proof in performance.

Keyed at each 15-minute interval of the twelve hours . . . it can be set in an instant's time with the touch of a finger . . . to turn a radio on and off automatically at any time desired. Any number of positions . . . up to ten hours in advance . . . can be set at one time, and a radio or *any other electrical appliance* . . . will be switched on and off right on the dot!



Philco Phone

The Finest Private Two-way Communication System Ever Built



Remote Unit

Provides instant two-way conversation with Master Control Unit. You can speak . . . or hear . . . from any point in the room. No need to stop what you are doing to use the PHILCO PHONE. Compact walnut cabinet— $6\frac{7}{8}$ " high, $6\frac{7}{8}$ " wide, $3\frac{1}{4}$ " deep.

Master Control Unit

Combination speaker-microphone which permits instant conversation with one or all Remote Stations at will. A turn of the Volume knob sends the voice to the Remote Units as LOUD or as low—as desired. Red Signal light on Master Control Unit shows when system is turned on, ready for use. Encased in compact, attractive walnut cabinet, size $8\frac{1}{8}$ " high, $10\frac{3}{4}$ " wide, $5\frac{5}{8}$ " deep.

PHILCO PHONE provides two-way communication between a Master Control Unit and one, two, three or four Remote Units in other rooms or departments. Through Philco Phone, orders can be issued and conversations carried on with complete privacy . . . saving time and waste motion both in business and at home.

Philco Phone can be easily installed anywhere in a few minutes. From the Master Control you can carry on a strictly private two-way conversation with any one of the Remote Units . . . or talk with all four at the same time.

Special Features of Philco Phone

Instant two-way communication.

Private—no eavesdropping.

Direct—no switchboard to go through.

Contact any Remote Station instantly—or talk with all Stations at once!

Voice-transmission as low—as LOUD—as you wish . . . without raising your voice.

Easy to install—anywhere.

Easy to operate—a child can use it.

Adaptable for any home or establishment.

Operates on AC or DC.

Has Underwriters' approval.

No inspection required.

Guaranteed Philco Quality.

Philco Standard Parts throughout.

No service troubles.

Low maintenance cost.

Most efficient system ever built.

Lowest price of any approved inter-communication system.

Needed Everywhere—

HOMES

OFFICES

STORES

GARAGES

FACTORIES

LAUNDRIES

WAREHOUSES

RAILROADS

HOSPITALS

SCHOOLS

FARMS

THEATRES

CLINICS

GOVERNMENT BUILDINGS

APARTMENT HOUSES

PIERS AND WHARVES

PUMPING STATIONS

POWER COMPANIES

BROKERS' OFFICES

FUNERAL PARLORS

DENTISTS' OFFICES

DOCTORS' OFFICES

DELICATESSENS

LUMBER YARDS

CONTRACTORS

RESTAURANTS

BANKS

BREWERIES

BUS DEPOTS

CHURCHES

COAL YARDS

CREAMERIES

HOTELS

DAIRIES

NURSERIES

LIBRARIES

AIRPORTS

AIRPLANES

NEWSPAPERS



NAME

ADDRESS

PHONE

NAME

ADDRESS

PHONE

NAME

ADDRESS

PHONE

NAME

ADDRESS

PHONE

NAME

ADDRESS

PHONE

NAME

ADDRESS

PHONE

NAME

ADDRESS

PHONE

NAME

ADDRESS

PHONE

NAME

ADDRESS

PHONE

NAME

ADDRESS

PHONE





NAME

ADDRESS

PHONE

NAME

ADDRESS

PHONE

NAME

ADDRESS

PHONE

NAME

ADDRESS

PHONE

NAME

ADDRESS

PHONE

NAME

ADDRESS

PHONE

NAME

ADDRESS

PHONE

NAME

ADDRESS

PHONE

NAME

ADDRESS

PHONE

NAME

ADDRESS

PHONE



