

This seal is your
**GUARANTEE
OF SAFETY!**



**You'll find it on the back
of every Transitone Radio**

Underwriters' Laboratories, Inc. is the national authority for SAFE electrical construction. Its label is your protection against the dangers of cheap, unreliable manufacture. Every Transitone compact bears this label on the back.

New tubes that give full performance in half the size. Use half the current and create *much less heat*. They permit quality construction never before possible in a compact radio . . . that's why every Transitone is SAFE from Fire and Shock!

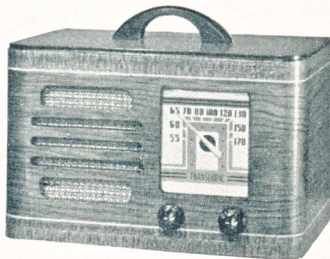
- ★ No Hot Wires.
- ★ No Heat Resistance in Cord.
- ★ Chassis isolated against shock and ground.
- ★ Use without the special precautions needed with unapproved compact radios.

For the sake of your children, your home, **INSIST** on Underwriters' approval in a small-size radio. Don't run the risk of burns, electric shocks, and fire! Every Transitone gives you this Guarantee of Safety.

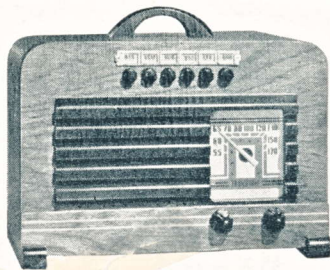
BUY A TRANSITONE AND BE SAFE!

New Radio Convenience!
**NO AERIAL . . NO GROUND
Just Plug in . . . Anywhere**

New kind of radio developed by Philco engineers. No installation needed! No ground; self-contained loop aerial. Just plug in wherever you wish. Carry it from room to room, on travels, in hotels. Truly *portable* with built-in carrying handle.



TH-14. Portable **Five-Tube** AC-DC Superheterodyne. Exceptionally clear, noise-free tone. Extremely sensitive. Handsome cabinet of sliced Walnut with exquisite inlays. SAFE from fire and shock.



TH-15. Electric Push-Button Tuning for five stations in a portable AC-DC Superheterodyne. **Five tubes.** Full clear tone. Hand-rubbed Walnut cabinet with beautiful inlays. Underwriters approved—it's SAFE!

EASY TERMS

**ONLY A FEW
PENNIES A DAY!**

FORM TA-102

PRINTED IN U. S. A.

TRANSITONE
Compact Radios

SOLD AND GUARANTEED BY

PHILCO



5 TUBES
\$9.95
AC-DC

The **ONLY** Radio of its size approved by Underwriters' Laboratories, Inc.

**SAFE
FROM FIRE
AND SHOCK!**

**SAFE
FOR YOUR HOME
AND CHILDREN!**

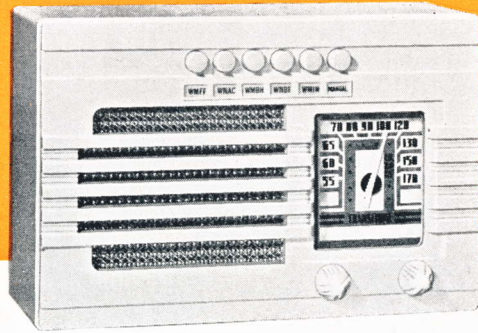


TP-11. Electric Push-Button Tuning for five favorite stations. Full rich tone; powerful performance. AC-DC Superheterodyne with five new-type Loktal tubes invented by Philco. All tubes work—no ballast tube. Automatic volume control. Built-in aerial; no ground needed. Approved by Underwriters' Laboratories, Inc. . . SAFE from fire and shock! Smart plastic Cabinet of lustrous brown with colorful amber grille. Coverage includes State Police Calls.

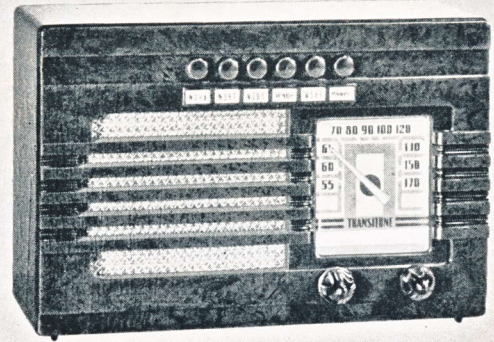
TRANSITONE

Sold and Guaranteed by

PHILCO



TP-5-1. Electric Push-Button Tuning for five stations. Powerful Five-Tube AC-DC Superheterodyne in modern Cabinet with sparkling Ivory finish. Coverage includes Municipal and State Police Calls. Built-in aerial; no ground needed. SAFE for home and children!

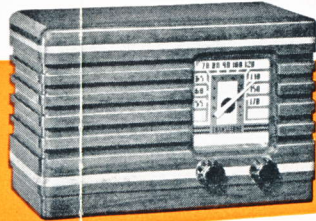


TH-5. With Electric Push-Button Tuning. Five-Tube AC-DC Superheterodyne with the added convenience of Electric Push-Button Tuning. Tune five stations at the touch of a button! Superb tone and performance. Handsome brown Bakelite Cabinet, smartly designed. Coverage includes State Police Calls. SAFE for home and children.

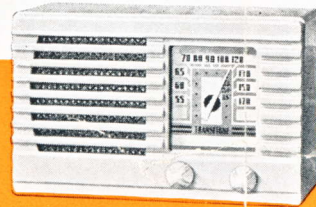
TP-5. In same cabinet, with coverage that includes Municipal Police.



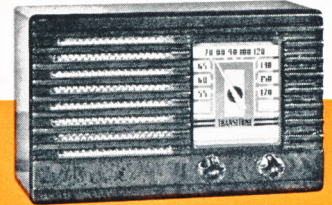
TP-10. Power, Tone, Performance—all combined in a powerful Five-Tube Superheterodyne AC-DC compact. This handsome plastic compact is of lustrous brown with colorful amber grille. Up-to-date streamline design. Coverage includes State and Municipal Police Calls. Approved by Underwriters' Laboratories, Inc. Completely SAFE from fire and shock.



TP-12. Beautiful Five-Tube AC-DC compact Superheterodyne in solid Walnut with Maple inlays. Rich tone, full volume, powerful performance. Complete with built-in aerial; needs no ground. Coverage includes Municipal and State Police Calls. SAFE for home and children!



TP-4-1. Ivory finish. Five-Tube AC-DC Superheterodyne in a smart, gem-like Cabinet finished in gleaming Ivory. Rich tone, full volume, powerful performance. Complete with built-in aerial; needs no ground. Coverage includes Municipal and State Police. SAFE for home and children!



TH-4. AC-DC Superheterodyne with 5 newly invented Loktal tubes. Improved Speaker gives amazing tone and volume. Powerful, sensitive, selective. Automatic Volume Control. Built-in aerial. No ground needed. Brown Bakelite Cabinet of smart, modern design. Gets State Police Calls. SAFE from fire and shock! TP-4. In same Cabinet, with coverage including Municipal Police.