

Installation **FREE!**
on Any Radio Set

New!

Yes, we will connect the famous Philco AB Socket Power to your radio set—no matter what make or style of battery operated set you now have or are planning to buy—at absolutely not one penny of additional cost to you.

Easy Payments

Furthermore, you can buy the marvelous New 1928 Model Philco AB Socket Power from us on very Easy Payments. All you need do is make a small first payment and you can pay the balance on easy monthly terms.

Trade in Your Old "A" Battery

It makes no difference what make of "A" battery you now have; it doesn't matter how old it is or how worn-out it may be; we will make you a very liberal trade-in allowance for it on the purchase of the guaranteed New 1928 Model Philco AB Socket Power.

Every Philco Guarantee

Built to Conform to Underwriters' Laboratories Safety Specifications.

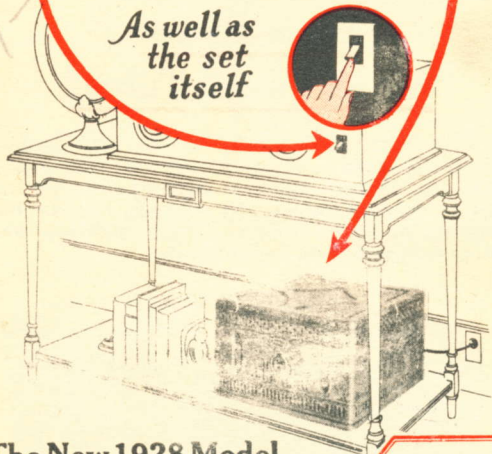
THE RADIO SHOP
27 E. Water St.
WINCHESTER, VA.

LITHO. IN U. S. A.

Your
Radio Set Switch
Controls
Everything

~ Your A Power
~ Your B Power

As well as
the set
itself



The New 1928 Model

PHILCO

Radio **(AB)** Socket Power

Built for
all Power Tubes
and
will deliver
180 volts

*Runs Any Battery Radio From
the House Electric Current!*

Light Socket Operation With the

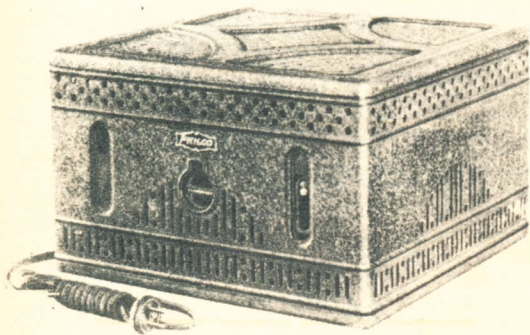
PHILCO Radio AB
Socket Power

is Radio's Biggest Sensation

It's a fact! It makes no difference whether you have a dry cell or a storage battery operated radio set. It doesn't matter what kind or what style of battery operated radio set you buy. The New 1928 Model Philco AB Socket Power will operate it from the electric light socket smoothly and perfectly.

Super-Power for all Power Tubes!

The New 1928 Model Philco AB Socket Power will furnish perfect "A" and "B" radio power from the electric current — *super-power for all power tubes* — without the slightest hum or the slightest distortion. Moreover, Philco positively will improve reception on any radio set.



Both the Philco AB 386 and the Philco AB 686 contain the wonderful Philco "B" Socket Power — the most powerful radio "B" socket power on the market. Guaranteed to produce 180 volts at 60 milli-amperes. Perfect tone-quality and perfect tone-volume always.

Snap!
It's on



Snap!
It's off

Your radio switch controls everything!

All you need do is Snap ON the radio set switch when you want to listen in. From the house electric current comes a constant, dependable flow of radio power. Snap OFF the radio switch and your radio set is silent. No fuss. No bother. Everything is in one cabinet and everything is controlled by the switch on your radio set.

No More Recharging to Do

The Philco does away entirely with all "B" batteries, dry cell batteries, and the ordinary "A" storage battery. No more recharging! No batteries to replace!

180 Volts
at 60 Milli-amperes!

The New 1928 Model Philco AB Socket Power positively will give you the high voltage required to operate any make or any kind of power tubes. 180 volts at 60 milli-amperes. Furthermore, it will *maintain* high voltage indefinitely!

Long Life Philcotrons

An exclusive secret of the marvelous New 1928 Model Philco AB Socket Power is the magic Philcotron — a feature found only in the famous Philco. These marvelous Philcotrons prolong the life of any and all power tubes.