

2 AIDS TO LOW-COST OPERATION

Run your radio as long as you like . . . enjoy all the programs you want to hear . . . and never worry about the battery going dead! Here are two ways to make that possible . . . and at a cost far lower than you ever expected.

Philco Sky-Charger

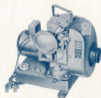


Mounted on a 10-foot high tower, the Philco Sky-Charger* operates on the slightest breeze . . . getting the full power of the wind. The generator starts charging with the wind at 6 miles per hour . . . and in winds blowing more than 20 miles per hour, the propeller automatically tilts back to "slip the wind" and hold the speed uniform. No chains, no pulleys, no brakes . . . nothing to stick or freeze! Costs only 50c a year to operate!

*Manufactured by
Parris-Dunn Corporation

Briggs & Stratton Power Charger

Here's a gasoline motor battery charger that Philco has found thoroughly dependable, and priced right! Ready to run whenever you want it . . . as long as you want it. Charges both 6-volt and 2-volt radio batteries, as well as auto and small lighting batteries. Place it anywhere . . . feed it a little gas and oil . . . and it's ready for its job. Air-cooled, compact, vibrationless!



Your Battery-Operated Philco deserves a Real Power Battery!

Of course, a battery-operated Philco will operate on any good battery of the right type . . . but why not make sure of getting all the performance that has been built into it?

There's one sure way to do that! Hook up your Philco to a real *power* battery like the Philco Heavy, Rugged, Thick Plate Radio "A" Battery . . . the same kind of battery used in central stations and powerful electric locomotives! When you use one of these batteries . . . you give your radio a real power plant!

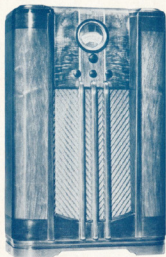
All Battery-Operated Philcos are shipped with powerful, rugged, standard or oversize Philco Power Batteries to assure delivery of the superlative performance built into each and every Philco. When ordering a battery for any radio . . . be sure to specify a heavy, rugged, thick plate Philco!

If you are on a power line, ask for the new booklets describing AC operated Philcos. A special folder on Philco Auto Radios is also yours for the asking!

1938 BATTERY-OPERATED PHILCO



Get American and Foreign Short-Wave Stations Day or Night!



PHILCO 38X

American and Foreign. A battery-operated Philco Inclined Sounding Board Model at the lowest price ever! Class "B" Push-Pull Pentode Audio System. Concert Grand Permanent Field Dynamic Speaker. Glowing Beam Station Finder. Two-Point Tone Control. Philco Color Dial names and locates foreign and domestic short-wave stations. Automatic Volume Control. Two Tuning Ranges. 6 Philco High-Efficiency Tubes. Sealed cabinet with *Protective Back Shield*.

PHILCO 39X
for 6-Volt Operation

In the same cabinet but designed for 6-volt operation with Philco's new long-life Synchronous Self-Rectifying Vibrator. **Philco 40X** also for 6-volt operation can be instantly switched over to 110-volt AC when power is available.



PHILCO 38T

American and Foreign. Features similar to 38K . . . with exception of Speaker and Protective Back Shield.



PHILCO 39T
for 6-Volt Operation

American and Foreign. With new type, long-life Philco Synchronous Self-Rectifying Vibrator. Other features similar to 38K . . . with exception of Speaker and Protective Back Shield. **Philco 40T** also for 6-volt operation can be instantly switched over to 110-volt AC when desired. Ideal for trailers.

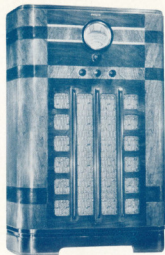
Tuning Range Coverage of Philcos 38, 39 and 40

Two Tuning Ranges cover Standard American Broadcasts . . . State Police . . . Day First-Class Amateur . . . Ship . . . and Foreign and American Short-Wave Broadcasts both Day and Night.

Tone Control

as applied to Philcos 38, 39 and 40

- A. For Normal Reception.
- B. Noise-reducing for distant reception.



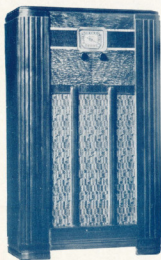
PHILCO 38K

American and Foreign. Class "B" Push-Pull Audio System. Concert Grand Permanent Field Dynamic Speaker. Glowing Beam Station Finder. Two-Point Tone Control. Philco Color Dial names and locates foreign and domestic short-wave stations in color for easy, instant tuning. Automatic Volume Control. Two Tuning Ranges. 6 Philco High-Efficiency Tubes. Sealed Cabinet with *Protective Back Shield*.

PHILCO 39K
for 6-Volt Operation

In the same cabinet but designed for 6-volt operation with Philco's new long-life Synchronous Self-Rectifying Vibrator. **Philco 40K** also for 6-volt operation can be instantly switched over to 110-volt AC when power is available.

The Greatest Battery-Set Values In All Radio History!



PHILCO 33F

American Receiver. Push-Pull Pentode Audio System. Full Vision Dial. Permanent Field Dynamic Speaker. Automatic Volume Control. Reduction Gear Tuning. Sealed Cabinet with Protective Back Shield. 5 Philco High-Efficiency Tubes. Covers all Standard Broadcasts and State Police Calls.

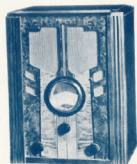
PHILCO 34F
for 6-Volt Operation

In the same cabinet but designed for 6-volt operation, with new type, long-life Synchronous Self-Rectifying Vibrator. **Philco 35F** also for 6-volt operation can be instantly switched over for 110-volt AC.



PHILCO 33B

American Receiver. Push-Pull Pentode Audio System. Full Vision Dial. New Type Magnetic Speaker. Automatic Volume Control. Reduction Gear Tuning. 5 Philco High-Efficiency Tubes. Covers all Standard Broadcasts and State Police Calls.



PHILCO 34B
for 6-Volt Operation

American Receiver for 6-volt operation, with a new type, long-life Synchronous Self-Rectifying Vibrator. **Philco 35B** also for 6-volt operation can be instantly switched over for 110-volt AC.

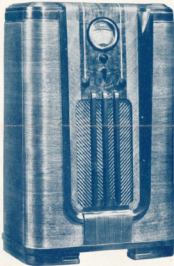
Philco covers the radio requirements of the unwired home as completely as Philco provides for the home where electric current is available!

There are battery-operated Philcos, modestly priced, which perform brilliantly on Standard American Broadcasts . . . and are available for either 2-volt or 6-volt operation.

And these are Philcos that operate on both 6-volt battery and 110-volt AC for trailers and for homes awaiting electrification.

American and Foreign Philcos add thrilling broadcasts from overseas to your sources of entertainment. Short-wave reception serves another purpose . . . a mighty important purpose to those so far from broadcasting stations that daylight reception is difficult. By tuning the short-wave bands, you can enjoy N. B. C. and Columbia programs in broad daylight from the American stations that broadcast them with tremendous volume to every part of the country.

Philco Battery-Operated Radios are priced to make them the greatest battery-set values ever offered . . . and you can buy them on the most liberal of terms. A small down payment . . . and payments as low as a dollar a week . . . puts a Philco in your home!



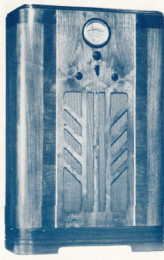
PHILCO SPREAD-BAND 643K

American and Foreign. Class "B" Push-Pull Audio System. Philco Spread-Band Dial with foreign stations named, located and spread four times farther apart. Philco Inclined Sounding Board. Philco Foreign Tuning System. Shadow Tuning. Concert Grand Permanent Field Dynamic Speaker. Four-Point Tone Control. Glowing Beam Tuning Range Indicator. Four Spread-Band Tuning Ranges. Noise-Excluding Signal Amplifier. Sealed Cabinet with Protective Back Shield. 7 Philco High-Efficiency Tubes. The finest battery-operated radio in all the world!



PHILCO SPREAD-BAND 643B

American and Foreign Baby Grand. Chassis duplicates features described under 643K . . . with the exception of the Philco Inclined Sounding Board and the Sealed Cabinet.



PHILCO 623K

American and Foreign. Three Tuning Ranges with Glowing Beam Tuning Range Indicator. Philco Foreign Tuning System. Philco Color Dial names and locates foreign and domestic short-wave stations in color. Class "B" Push-Pull Audio System. Noise-Excluding Signal Amplifier. Concert Grand Permanent Field Dynamic Speaker. Three-Point Tone Control. 6 Philco High-Efficiency Tubes. Sealed Cabinet with Protective Back Shield.

PHILCO 624K
for 6-Volt Operation

In the same cabinet as the 623K described above but designed for 6-volt operation. Philco's new type Synchronous Self-Rectifying Vibrator is employed . . . and other features duplicate those of the 623K.



PHILCO 623T

American and Foreign Table Model. Features similar to the 623K . . . with exception of speaker and Protective Back Shield.

PHILCO 624T
for 6-Volt Operation

American and Foreign Table Model for 6-volt operation with Philco's new long-life Synchronous Self-Rectifying Vibrator. Other features similar to the 623T

Tuning Range Coverage of American and Foreign Philcos

PHILCO 643

Standard American Broadcasts . . . State and Municipal Police . . . Day and Night Foreign and American Short-Wave Broadcasts . . . Night and Day Aviation and Day First-Class Amateur . . . Ship.

PHILCOS 623 AND 624

Standard American Broadcasts . . . State and Municipal Police . . . Day and Night Foreign and American Short-Wave Broadcasts . . . Aviation . . . Ship . . . Day and Night First-Class Amateur.

Tone Control of American and Foreign Philcos

PHILCO 643

- A. Brilliant—for speech.
- B. Bright—for normal reception of music.
- C. Mellow—first noise-reducing stage.
- D. Deep—noise-reducing for distant reception.

PHILCOS 623 AND 624

- A. Brilliant—for speech.
- B. Mellow—for music.
- C. Deep—noise-reducing for foreign reception.