

PHILCO 1939

RADIO STAR ALBUM



Follow the Stars *with*
PHILCO MYSTERY CONTROL

Price: Twenty-Five Cents

Follow the Stars with PHILCO MYSTERY CONTROL

Now Philco makes it easy for you to follow your favorite radio stars . . . to switch from station to station without the slightest effort. How? By Philco Mystery Control . . . the miraculous radio invention that brings you new thrills, new convenience, new comfort!

Think of it! From any room in your home — upstairs or down — you can operate the new 1939 Mystery Control Philco, which is placed in your living room, without leaving your chair or moving a step. You merely carry the light, compact Mystery Control unit to any place you wish at any time. *There are absolutely no wires, no connections of any kind between the Mystery Control unit and the radio or anything else!* Yet with a finger-flick of the dial, you control the radio in your living room . . . change stations, regulate volume, even turn the set off. It's a master stroke of radio science . . . sensational, unbelievable . . . yet true!

And to bring you still more enjoyment, Philco offers you this unique and interesting Radio Star Album which pictures and identifies your radio favorites . . . 144 of them, alphabetically arranged for ready reference. In addition, the book contains the latest complete log of Long-Wave Stations and an up-to-date log of principal Foreign Short-Wave Stations. Keep this copy and use it as your guide to greater program pleasure!

Copyright, 1938, by Haynes' Radio Log, 161 West Harrison Street, Chicago.

Network radio artists who desire their pictures in future editions of this booklet will send 8 x 10 glossy prints of themselves to the address above. Written permission to affix network insignia and likeness of sponsor's product must be included.



Fred Allen



Don Ameche



Curtis Arnall 'Pepper Young'



Gene Arnold (Minstrels)



Robert Armbruster

Now... Meet Them Face To Face!



Ruth Bailey 'Alice'



Jack Baker, Tenor



Kenny Baker



Luise Barclay 'Karen'



Robert Benchley



Jack Benny



Spencer Bentley 'Bob'



Arlene Blackburn 'Kitty Kelly'



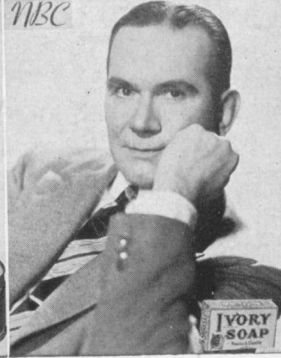
Joan Blaine (Valiant Lady)



Ford Bond, Announcer



Fanny Brice 'Baby Snooks'



Carleton Brickert 'David Post'



Joe E. Brown



Betty Caine (Don Winslow)

Macdonald Carey 'Dr. Lee'



Rachel Carlay

Frances Carlon 'Kitty Keene'

Beth Chandler, Blues

Sybil Chism, Organist



Malcolm Claire 'Uncle Mal'

Buddy Clark, Baritone

Correll 'Andy', Gorden 'Amos'

Dr. Charles M. Courboin



Opal Craven 'Lullaby Lady'

Donna Damerel 'Marge'

Elizabeth Day, Actress

Cecil B. de Mille

Tune from
any room!

PHILCO

MYSTERY CONTROL

No Wires . . . No Connections!



Jean Dickenson



Tommy Dorsey



Patricia Dunlap 'Janet Dexter'



Mary Eastman



Nan Grey 'Kathy'



Harry Einstein 'Parkyakarkus'



Joe Emerson



Jimmie Fidler



Laurette Fillbrandt, Actress



Bernardine Flynn 'Sade'



Vivian Fridell 'Mary Noble'



Alice Frost 'Ruth Evans'



M. Fugit (Kalt. Kindergarten)



Jack Fulton

Sensational! PHILCO MYST

See It —
Try It —



Judy Garland

Betty Lou Gerson 'Connie'



Those Happy Gilmans

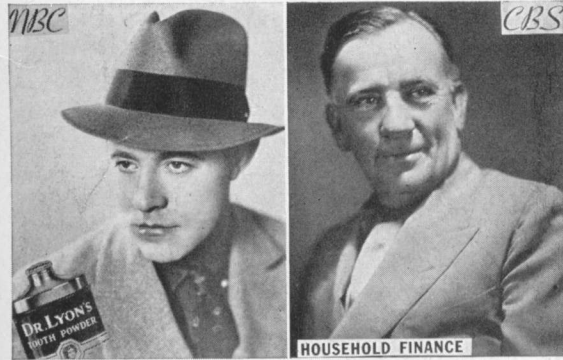
Irma Glen, Organist



Charles Goodman



Sharon Grainger 'Olga'

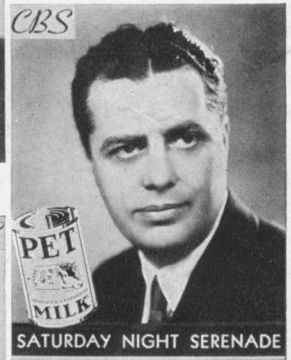


Ken Griffin 'Larry Noble'

Edgar A. Guest



Robt. Guilbert 'Don Winslow'

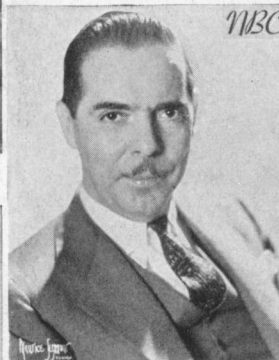


Gus Haenschen



Jack Haley

Marjorie Hannan 'Ruth Ann'



Harvey Hays (Words & Music)



Gabriel Heatter



Breath-Taking! VERY CONTROL

Hear It —
Own It!



Jean Hersholt 'Dr. Christian'



Alice Hill ('Betty' & Bob)



Carl Hohengarten



Henry Hunter, Actor



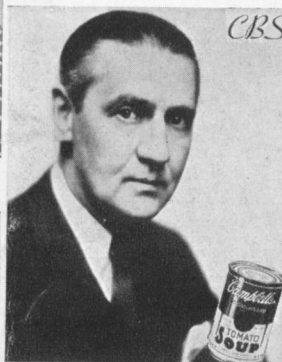
Lysbeth Hughes



Ray Hedge 'Clarence'



Horace Heidt



Edwin C. Hill



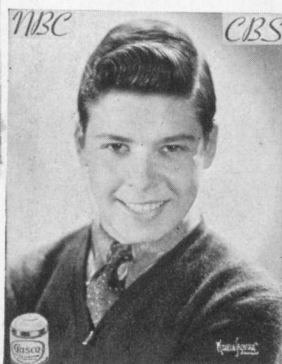
Carl Hoff



Bob Hope



Billy House



Billy Idelson 'Rush'



'Aunt Jenny'

All That Radio

★ ★ ★ ★ With

PHI



Arlene 'Babs' Johnson



Bess Johnson



Jim Jordan 'Fibber McGee'



Bruce Kammern 'Kaltenmeyer'



Johnnie Johnston



Al Jolson



Durward Kirby, Announcer



Kay Kyser



Annette King (Club Matinee)



Lenore Kingston (Don Winslow)



Peg La Centra



Chester Lauck 'Lum' Norris Goff 'Abner'



Dorothy Lamour



Offers Is Yours

a New ★ ★ ★ ★

LCO



'The Lone Ranger'

Phillips Lord 'Seth Parker'



Barbara Luddy



Dorothy Lowell 'Sunday'



Abe Lyman



Charles Lyon, Announcer



John MacBryde 'Old Ranger'



Ruth Lyon (Words & Music)



Edward MacHugh



Mary Margaret McBride



Mercedes McCambridge



Herbert Marshall



Dorothy McGuire 'Sue Evans'



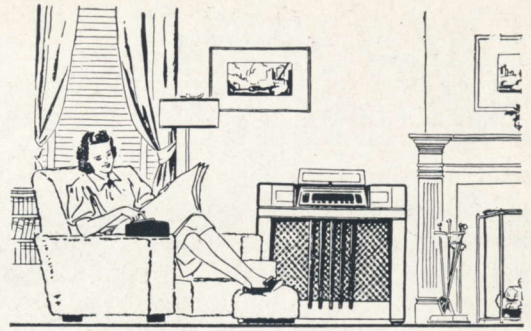
Don McNeill (Breakfast Club)



Frank Morgan



Helen Menken



Frank Munn



Pat Murphy (Girl Alone)



Betty Olsen (Escorts & 'Betty')



Ethel Owen 'Jill'



Al Pearce



Joe Penner



Ma Perkins



Bill Perry



William Powell



Loretta Poynton 'Donna'



Isabel Randolph 'Rhoda'



Martha Raye

PHILCO MYSTERY CONTROL

enables you to change stations, control volume, even switch off the set . . . from any room in your house . . . without wires or any other radio connections! Come in for a demonstration.



Irene Rich

Robert Ripley



Edward G. Robinson



Julia Sanderson—Frank Crumit



Anne Seymour 'Mary Marlin'



Dan Seymour, Announcer



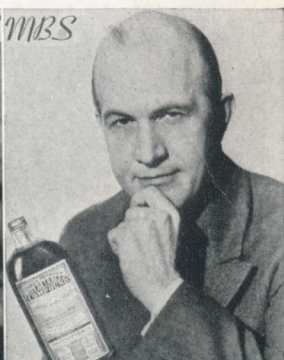
Col. H. Norman Schwartzkopf



Hugh Studebaker 'Dr. Bob'



Mary Lee Taylor



M. Sayle Taylor 'Experience'



Bill Thompson, Dialectician



Les Tremayne



Claire Trevor



Fred Uttal, Announcer



Rudy Vallee

Enjoy Them All With a **PHILCO**



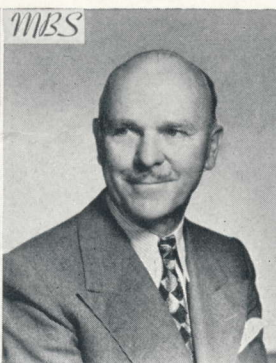
Robert Young



Art Van Harvey 'Vic'



Benay Venuta



'Wallace' (Thin To Music)



Peggy Wall 'Peggy'



Fred Waring



Marek Weber



Kathleen Wilson 'Claudia'



Meredith Willson



Betty Winkler (Girl Alone)



Joan Winters (Girl Alone)



Helen Wood 'Elaine'



Edythe Wright

PRINCIPAL FOREIGN SHORT-WAVE STATIONS

CITY	STATION	MEGACYCLES	HOURS (E. S. T.)	
Berlin	DJB	15.20	4:50 p.m. to 10:45 p.m.	
	DJC	6.020	4:50 p.m. to 10:45 p.m.	
	DJD	11.77	4:50 p.m. to 10:50 p.m.	
	DJL	15.11	8:00 a.m. to 9:00 a.m.	
	DJP	11.85	7:15 p.m. to 10:50 p.m.	
Bogota	HJ3ABD	4.840	6:00 p.m. to 11:30 p.m.	
Bucaramanga	HJ7ABB	4.820	7:00 p.m. to 11:00 p.m.	ex. Sun.
	HJ7ABD	9.630	6:00 p.m. to 11:30 p.m.	
Buenos Aires	LRX	9.660	9:30 a.m. to 10:30 p.m.	
Caracas	YV5RC	5.97	3:45 p.m. to 10:30 p.m.	
	YV5RF	6.380	6:30 p.m. to 10:30 p.m.	ex. Sun.
	YV5RJ	6.255	5:30 p.m. to 10:30 p.m.	ex. Sun.
	YV5RP	6.270	6:30 p.m. to 10:30 p.m.	ex. Sun.
Cartagena	HJIABE	4.800	8:00 p.m. to 10:30 p.m.	
	HJIABP	9.617	4:30 p.m. to 10:00 p.m.	
Geneva	HBL	9.345	6:45 p.m. to 8:00 p.m.	Mon.
Guatemala	TGWA	9.685	10:00 p.m. to 12:00 p.m.	
	TGWA	15.17	12:45 p.m. to 1:45 p.m.	
Guayaquil	HC2RL	6.635	9:00 p.m. to 11:00 p.m.	Tues.
Heredia	TI4-NRH	9.700	9:00 p.m. to 10:00 p.m.	Tues., Thurs., Sat.
Hilversum	PCJ	9.590	9:00 p.m. to 11:30 p.m.	Mon., Tues.
Johannesburg	ZRK	9.620	11:45 p.m. to 12:45 a.m.	ex. Sat.
LaCeiba	HRD	6.235	7:30 p.m. to 10:30 p.m.	ex. Sun.
Lisbon	CSW	9.950	5:00 p.m. to 7:00 p.m.	
London	GSA	6.050	9:20 p.m. to 11:20 p.m.	
	GSC	9.580	9:20 p.m. to 11:20 p.m.	
	GSD	11.75	6:20 p.m. to 8:30 p.m.	9:20 p.m. to 11:20 p.m.
	GSG	17.79	12:20 p.m. to 5:55 p.m.	6:20 p.m. to 8:30 p.m.
	GSI	15.26	9:20 p.m. to 11:20 p.m.	
	GSL	6.110	9:20 p.m. to 11:20 p.m.	
	GSP	15.31	4:15 p.m. to 5:55 p.m.	6:20 p.m. to 8:30 p.m.
	EAR	9.490	7:00 p.m. to 10:30 p.m.	Sun., Tues., Thurs.
	YV1RB	5.845	4:15 p.m. to 9:45 p.m.	ex. Sun.
	YV1RH	6.635	4:00 p.m. to 11:00 p.m.	ex. Sun.
Maracaibo	YV1RL	5.935	5:00 p.m. to 9:45 p.m.	ex. Sun.
	YV4RD	6.300	6:30 p.m. to 9:30 p.m.	ex. Sun.
Maracay	VLR	9.580	9:25 p.m. to 8:00 a.m.	ex. Sun.
Melbourne	VK3ME	9.510	4:00 a.m. to 7:00 a.m.	ex. Sun.
	RAN	9.600	7:00 p.m. to 9:15 p.m.	
Moscow	HP5B	6.035	8:00 p.m. to 10:30 p.m.	
Panama City	HP5J	9.605	6:00 p.m. to 10:30 p.m.	
	TPA-4	11.72	6:00 p.m. to 8:15 p.m.	8:30 p.m. to 11:00 p.m.
Paris	TPB-6	15.13	6:00 p.m. to 8:15 p.m.	
	TPB-7	11.88	8:30 p.m. to 11:00 p.m.	
	VK6ME	9.590	6:00 a.m. to 8:00 a.m.	ex. Sun.
Perth	HH2S	5.925	7:00 p.m. to 10:00 p.m.	ex. Sun.
Port-au-Prince	OLR3A	9.550	8:00 p.m. to 10:35 p.m.	Mon., Tues., Thurs., Fri.
	OLR4A	11.84	6:55 p.m. to 9:55 p.m.	Mon., Tues., Thurs., Fri.
	OLR4B	11.76	6:55 p.m. to 9:55 p.m.	Mon., Tues., Thurs., Fri.
	TGQA	6.400	9:00 p.m. to 11:00 p.m.	ex. Sun.
Quezaltenango	HC1RB	7.890	9:00 p.m. to 11:00 p.m.	ex. Sun.
Quito	PSH	10.22	6:00 p.m. to 9:00 p.m.	
Rio de Janeiro	IRF	9.830	7:30 p.m. to 9:00 p.m.	
Rome	2RO	9.630	6:00 p.m. to 9:00 p.m.	
	YV2RA	5.745	5:30 p.m. to 9:00 p.m.	ex. Sun.
San Cristobal	TIEP	6.680	6:00 p.m. to 11:30 p.m.	
San Jose	TIPG	6.410	6:00 p.m. to 11:30 p.m.	
	EAJ-43	10.37	8:00 p.m. to 9:00 p.m.	
Santa Cruz	HIIS	6.430	8:00 p.m. to 10:00 p.m.	ex. Sun.
Santiago	VK2ME	9.590	4:30 a.m. to 8:30 a.m.	Sun.
Sydney	HRN	5.875	6:00 p.m. to 9:30 p.m.	
Tegucigalpa	JZJ	11.80	7:15 a.m. to 8:30 a.m.	4:30 p.m. to 5:30 p.m.
Tokyo	HIG	6.290	4:40 p.m. to 10:40 p.m.	ex. Sun.
	HIN	6.245	6:15 p.m. to 9:45 p.m.	ex. Sun.
	HIT	6.630	5:45 p.m. to 8:45 p.m.	ex. Sun.
Trujillo City	YV4RH	5.855	5:00 p.m. to 11:00 p.m.	ex. Sun.
				noted

Stations broadcast daily at times given unless otherwise noted

*Tune from
any room!*



PHILCO MYSTERY CONTROL



**No Wires...
No Connections!**



Here are never-ending thrills for you, your family and your friends . . . with Philco Mystery Control! It's the most sensational invention since radio itself . . . and the greatest tuning convenience of all time!

No more tiresome jumping-up-and-down to change stations. You tune this beautiful new clear-toned Philco . . . located in your

living room . . . from anywhere in your home — without a single wire or connection of any kind! With a mere flick of your finger you switch from one favorite station to another . . . control the volume . . . even turn off the set!

Be among the first to enjoy the thrill of Philco Mystery Control. Come in . . . see it, hear it, try it yourself!

EASY TERMS ★ BIG TRADE-IN ALLOWANCE