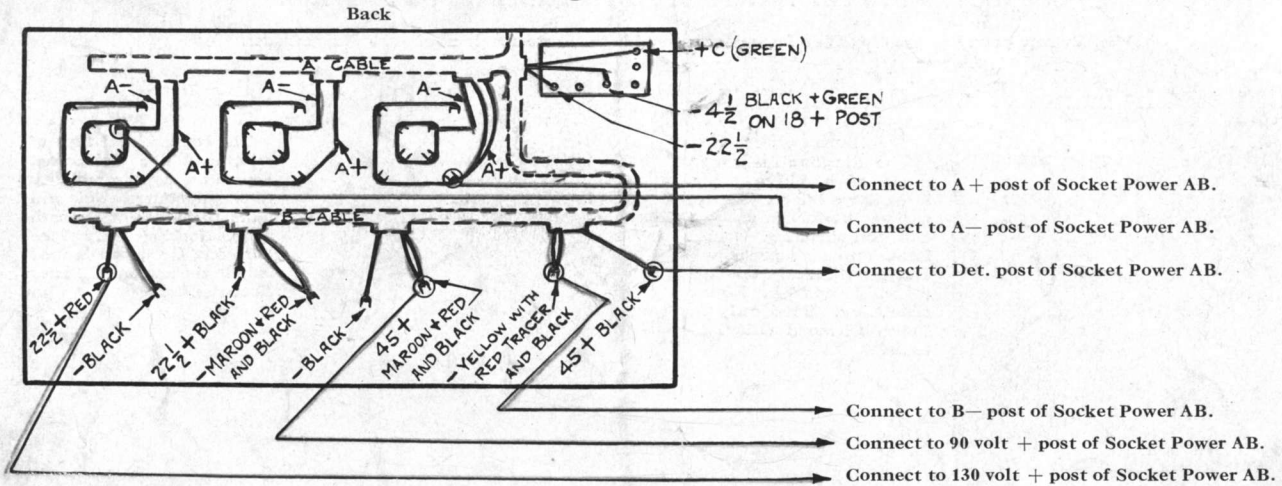


# Instructions for Connecting Philco

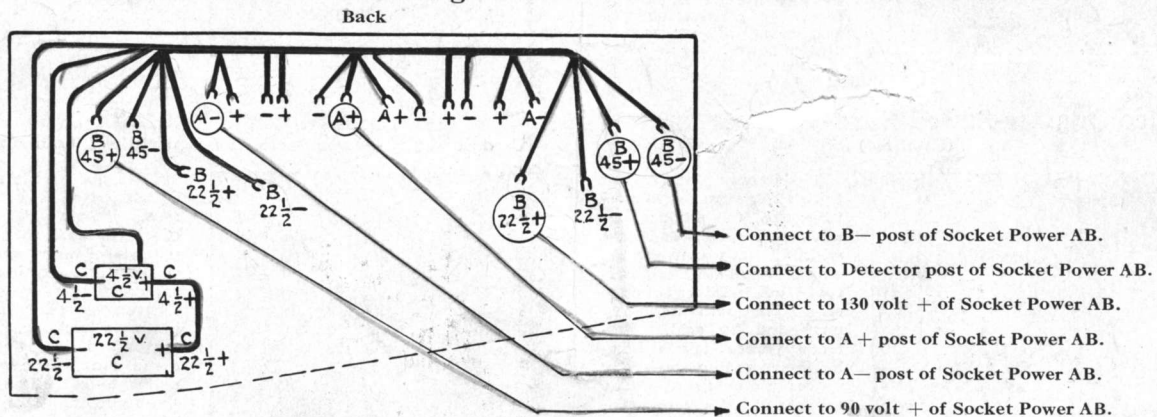
## Instructions for Connecting Philco Socket Power AB to Radiola 28



1. Drill  $\frac{1}{2}$ -inch hole through wooden bottom of the battery compartment near the center of the box.
2. Run a cable having six wires (differently colored for identification) through this hole and make soldered or bolted connections to terminals of the set wiring as shown above.
3. Tape all connections and all bare ends of unused wires. The four lugs on each A+ lead can be bunched together and taped at one time. Also the four lugs on each A- lead can be taped together. Tape all other wires separately.

4. Connect the outer ends of the cable wires to binding posts of Socket Power AB in accordance with above diagram.
5. The "C" battery must be connected in the set as shown above.
6. If desired, a five-wire instead of a six-wire cable may be used by leaving off the B- connection called for above and connecting together the B- and A+ posts of Socket Power AB by means of a short wire.

## Instructions for Connecting Philco Socket Power AB to Radiola 25



1. Drill a  $\frac{1}{2}$ -inch hole through bottom of radio set at a convenient point.
2. Run a cable having six wires (differently colored for identification) through this hole, and make soldered or bolted connections to terminals of the set wiring as shown above.
3. Tape up these connections as well as all unused terminals with insulating tape.
4. Connect outer ends of the cable wires to

- binding posts of Socket Power AB in accordance with above diagram.
5. Dry "C" batteries must be connected up in set in accordance with R. C. A. instructions.
6. If desired, a five-wire instead of a six-wire cable may be used by leaving off the B- connection called for above and connecting together the B- and A+ posts of Socket Power AB by means of a short wire.