

132

**you
ASKED
FOR IT**

LONG WAVE—SHORT WAVE
ALL THAT'S ON THE AIR

**you
WAITED
FOR IT**

**It's
HERE!**

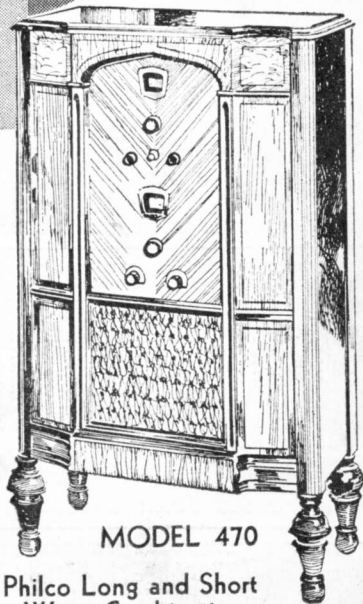
PHILCO

**Long and Short Wave
Combination**

AND IT REALLY WORKS

YES, everyone has been waiting for PHILCO to bring out their Long and Short Wave Combination set and now it's here—direct from the great PHILCO factories. Naturally, you expect from PHILCO a Long and Short Wave Combination that really works and we offer you this latest product of PHILCO engineering with full confidence that when you see it and hear it, you will want it.

All you've got to do is to learn the quirks and irregularities of short waves, and then what thrills are in store for you! Your favorite programs over long waves, of course, then by the turn of a switch you have police calls, ships at sea, airplanes in flight, foreign countries, strange out-of-the-way corners of the earth—the life of other worlds—all at your finger tips.



MODEL 470

**Philco Long and Short
Wave Combination**

Nine PHILCO Balanced Tubes including Screen Grid and Pentode Power Tubes—Superheterodyne Circuit—Two Illuminated Station Recording Dials, Long Wave from 550 to 1,500 Kilocycles—Short Wave from 1.5 to 19 Megacycles—Electro Dynamic Speaker—Tone Control—Famous PHILCO Balanced Unit Construction—Beautiful Hand-rubbed Cabinet—Complete—Nothing else to buy.
Also model 490 with 11 PHILCO Balanced Tubes and Automatic Volume Control.

Printed in U. S. A.

PHILCO

LONG AND SHORT WAVE

Radio Log

YOUR complete radio enjoyment is our responsibility as an authorized PHILCO dealer. To fulfill that responsibility our complete facilities for serving you are at your disposal. We stand ready to test your radio tubes, service your present radio or demonstrate any of the new PHILCOS.

You are presented with this superior radio log as a token of our interest in your full radio enjoyment.

MONONGAHELA SYSTEM

INSTRUCTIONS

Simplicity is the keynote of Haynes' Radio Log. The horizontal lines group the stations to be heard on one setting. The vertical lines divide stations map-like, so your nearby stations are in one column. Enter your dial settings in the blank center column. The figures you record will progress in exact numerical order. Bold letter at extreme right indicates Power—See Power Code above. Chain stations are designated: *Columbia; *National. When this log becomes inaccurate, send 25c in coin to Walter Haynes' Publications, 608 S. Dearborn St., Chicago, for the DeLuxe Booklet form. One year subscription One Dollar—five or more revisions.

| WESTERN <i>Wash., Ore., Cal., Utah, Etc.</i> | MIDDLE WESTERN <i>Minn., Ia., Neb., Mo., Tex., Etc.</i> | K.C. | Dial No. | CENTRAL <i>Ill., Mich., Ohio, Tenn., Etc.</i> | EASTERN <i>Mass., N. Y., Pa., N. C., Etc.</i> |
|---|--|------|----------|--|--|
| KFDY Brookings, S. D. | *KSD-KFUD St. Louis, Mo. | 550 | | *WRCR Cincinnati, Ohio | *WGR Buffalo, N. Y. |
| KOAC Corvallis, Ore. | *KFLY Bismarck, N. D. | 560 | | *WIBO-WPCC Chicago | *WFI-WLIT Philadelphia |
| KTAB Oakland, Cal. | *KFDM Beaumont, Tex. | 560 | | *WBNB Knoxville, Tenn. | *WQAM Miami, Fla. |
| KMTR Los Angeles, Cal. | *WMAX Yankton, S. D. | 570 | | *WBNY Youngstown, Ohio | *WNC Asheville, N. C. |
| KKA Seattle, Wash. | *KGO Wichita Falls, Tex. | 570 | | *WEO Columbus, Ohio | *WNC-ASheville, N. C. |
| KKUA Edmonton, Alta. | *WIBW Topeka, Kas. | 580 | | *WZAZ-WOBU W. Va. | *WTCG-WNYC-WSTR NY |
| KGFY Pierre, S. D. | *KSAC Manhattan, Kas. | 590 | | *KCLC-CRMC Toronto | *WTCG Worcester, Mass. |
| *KHQ Spokane, Wash. | *WOW-WCAJ Nebraska | 590 | | *WKZO Kalamazoo, Mich. | *WEEI Boston, Mass. |
| *KFSD San Diego, Cal. | *WMT Waterloo, Iowa | 600 | | *WREC-WOAN Memphis | *WICC Bridgeport, Conn. |
| *KFRC San Francisco, Cal. | *WDAF Kansas City, Mo. | 610 | | *WJAY Cleveland, Ohio | *WCAO Baltimore, Md. |
| *KTAR Phoenix, Ariz. | | 620 | | *WTMJ Milwaukee, Wis. | *WIP-WFAN Philadelphia |
| *KRW Portland, Ore. | | 630 | | *WGBF Evansville, Ind. | *WBLZ Bangor, Maine |
| CFCT Victoria, B. C. | KFRU Columbia, Mo. | 630 | | *WAIU Columbus, Ohio | *WFLA-WSUN Florida |
| CJGX Yorkton, Sask. | *WOT Joliet, Ill. | 640 | | *WSM Nashville, Tenn. | *WVAL Washington, D. C. |
| *KFI Los Angeles, Cal. | *XFG Mexico City | 640 | | 461 | *CNRA Montreal, N. B. |
| KPCB Seattle, Wash. | | 650 | | 462 | |
| CJRM-CJRW Saskatoon | WAAW Omaha, Nebr. | 650 | | 464 | *WEAF New York (WTIC) W |
| *KPO San Francisco, Cal. | KFEQ St. Joseph, Mo. | 660 | | 447 | *WPTF Raleigh, N. C. |
| CFAC-CNRC Calgary, Alta. | CFCN-CHCA-CJCY Calgary | 690 | | 441 | *CKGW-CPRY Toronto, Ont. |
| KMPC Beverly Hills, Cal. | XEN Mexico City | 700 | | 435 | *CJSC-CJBC Toronto, Ont. |
| | | 710 | | 428 | *WOR Newark, N. J. |
| | | 720 | | 416 | |

| | | | | | |
|---------------------------|--------------------------|------|--|-----|--------------------------|
| CKWX-CKCD Vancouver | XER Acuna, Mex. | 730 | | 411 | CNRM Montreal, Que. |
| | KMMJ Clay Center, Neb. | 740 | | 405 | *CKAC-CHYC Montreal |
| | XEQ Juarez, Mex. | 750 | | 400 | *WSB Atlanta, Ga. |
| *KVI Tacoma, Wash. | *WVW St. Louis, Mo. | 760 | | 395 | *WJZ New York |
| | KFAB Lincoln, Neb. | 770 | | 389 | *WMI Havana, Cuba |
| KELW-KTM California | *CKY-CNRC Winnipeg, Man. | 780 | | 384 | *WTAR-WPOR Norfolk, Va. |
| *KGO Oakland, Cal. | XEZ Mexico City | 790 | | 380 | *WEAN Providence, R. I. |
| | *WBAP Ft. Worth, Tex. | 800 | | 375 | *WGY Schenectady, N. Y. |
| | *WFAA Dallas, Tex. | 810 | | 370 | |
| | *WCCO Minneapolis, Minn. | 810 | | 366 | WPCB New York City |
| | XFT Mexico City | 820 | | 357 | WRUF Gainesville, Fla. |
| *KOA Denver, Colo. | U-W | 830 | | 353 | WHDD Boston, Mass. |
| CHCT-CKLCC Red Deer, Alta | KWKH Shreveport, La. | 840 | | 350 | *CKGW-CPRY Toronto, Ont. |
| | WHB Kansas City, Mo. | 850 | | | WABC New York City |
| KMO Tacoma, Wash. | XFX Mexico City | 860 | | 345 | |
| KLX Oakland, Cal. | WSU Iowa City, Ia. | 870 | | 341 | WGBI-WQAN Scranton, Pa. |
| | KFKA-KPOF Colorado | 880 | | 336 | *WJAT Atlanta, Ga. |
| KARK Little Rock, Ark. | KFNE Sharnandoah, Ind. | 890 | | 333 | *WJAN Providence, R. I. |
| KHJ Los Angeles, Cal. | KNS Vermillion, S. D. | 900 | | 330 | *WBN Buffalo, N. Y. |
| KGBU Ketchikan, Alaska | *WKY Okla. City, Okla. | 910 | | 326 | *WJAX Jacksonville, Fla. |
| CFQC-CNRS Saskatoon | XEW Mexico City | 920 | | 322 | CHNS-CNRR Halifax, N.S. |
| *KOMO Seattle, Wash. | *KPRC Houston, Texas | 930 | | 322 | WBSO Walsley, Mass. |
| | KFEL-KEF Denver | 940 | | 319 | *WDBJ Roanoke, Va. |
| KFWI San Francisco, Cal. | KMA Sheenandoah, Ia. | 950 | | 316 | *WCSH Portland, Maine |
| KROW Oakland, Cal. | *KGBZ York, Neb. | 960 | | 312 | *WAAT Jersey City, N. J. |
| *KCOIN Portland, Ore. | *OWDAY Fargo, N. D. | 970 | | 309 | *WRC Washington, D. C. |
| *KGU Honolulu, Hawaii | *WHA Madison, Wis. | 980 | | 306 | CKCL-CKNK Toronto |
| KFWB Hollywood, Cal. | *KMBK Kansas City, Mo. | 990 | | 303 | *KDKA Pittsburgh, Pa. |
| CFAC-CNRR Regina, Sask. | *KGLH Billings, Mont. | 1000 | | | *WBZ-WBZA Boston, Mass. |
| *KJR Seattle, Wash. | XED Reynosa, Mex. | | | | WGEQ York, Pa. |
| | | | | | |
| KFVD Culver City, Cal. | *WHO Des Moines, Ia. | | | | |
| | *WOC Davenport, Ia. | | | | |

| Power Code | 5 | 10 | 15 | 20 | 25 | 50 | 75 | 100 | 150 | 200 | 250 | 300 | 500 | 750 | 1000 | 1500 | 2000 | 2500 | 5000 | 10000 | 15000 | 25000 | 50000 |
|---|-----|----|----|----|----|----|----|-----|-----|-----|-----|-----|-----|-----|------|------|------|------|------|-------|-------|-------|-------|
| Call | A | B | C | D | E | F | G | H | I | J | K | L | M | N | O | P | Q | R | S | T | U | V | W |
| Station | | | | | | | | | | | | | | | | | | | | | | | |
| WESTERN <i>Wash., Ore., Cal., Utah, Etc.</i> | | | | | | | | | | | | | | | | | | | | | | | |
| KQW San Jose, Cal. | M | | | | | | | | | | | | | | | | | | | | | | |
| CNRV Vancouver, B. C. | M | | | | | | | | | | | | | | | | | | | | | | |
| KNX Los Angeles, Cal. | W | | | | | | | | | | | | | | | | | | | | | | |
| KWJJ Portland, Ore. | M | | | | | | | | | | | | | | | | | | | | | | |
| KJBS San Francisco, Cal. | H | | | | | | | | | | | | | | | | | | | | | | |
| KGDM Stockton, Cal. | K | | | | | | | | | | | | | | | | | | | | | | |
| KFSG-KMCS Los Angeles | M | | | | | | | | | | | | | | | | | | | | | | |
| *KSL Salt Lake City, U. | S-W | | | | | | | | | | | | | | | | | | | | | | |
| KTW-KWSC Wash. | O | | | | | | | | | | | | | | | | | | | | | | |
| *KVA San Francisco, Cal. | O | | | | | | | | | | | | | | | | | | | | | | |
| KLPM Minot, N. D. | H | | | | | | | | | | | | | | | | | | | | | | |
| KFOX Long Beach, Cal. | O | | | | | | | | | | | | | | | | | | | | | | |
| MIDDLE WESTERN <i>Minn., Ia., Neb., Mo., Tex., Etc.</i> | | | | | | | | | | | | | | | | | | | | | | | |
| KGGF Picher, Okla. | M | | | | | | | | | | | | | | | | | | | | | | |
| KNAD Norman, Okla. | M | | | | | | | | | | | | | | | | | | | | | | |
| XEB Mexico City | O | | | | | | | | | | | | | | | | | | | | | | |
| *KFLD Dallas, Tex. | T | | | | | | | | | | | | | | | | | | | | | | |
| *KTHS Hot Springs, Ark. | T | | | | | | | | | | | | | | | | | | | | | | |
| KFBI Milford, Kas. | S | | | | | | | | | | | | | | | | | | | | | | |
| WJAG Norfolk, Neb. | O | | | | | | | | | | | | | | | | | | | | | | |
| WDZ-WCAZ Illinois | H | | | | | | | | | | | | | | | | | | | | | | |
| *KMOX St. Louis, Mo. | W | | | | | | | | | | | | | | | | | | | | | | |
| KSOO Sioux Falls, S. D. | O | | | | | | | | | | | | | | | | | | | | | | |
| *KTRH Houston, Tex. | M | | | | | | | | | | | | | | | | | | | | | | |
| WTAW College Station, Tex | M | | | | | | | | | | | | | | | | | | | | | | |
| XEH Monterey, Mex. | O | | | | | | | | | | | | | | | | | | | | | | |
| *KV00 Tulsa, Okla. | S-V | | | | | | | | | | | | | | | | | | | | | | |
| XETA Mexico City | O | | | | | | | | | | | | | | | | | | | | | | |
| *KEY Portland, Ore. | S | | | | | | | | | | | | | | | | | | | | | | |
| KOB State College, N.M. | V | | | | | | | | | | | | | | | | | | | | | | |
| KERN-KWG-KGEV-KV05 | O | | | | | | | | | | | | | | | | | | | | | | |
| KGY-KGEK-KGFJ | O | | | | | | | | | | | | | | | | | | | | | | |
| KFJ Fresno, Cal. | H | | | | | | | | | | | | | | | | | | | | | | |
| KFXM-KPPC California | H | | | | | | | | | | | | | | | | | | | | | | |
| KTW-KWSC Wash. | O | | | | | | | | | | | | | | | | | | | | | | |
| *KVA San Francisco, Cal. | O | | | | | | | | | | | | | | | | | | | | | | |
| KLPM Minot, N. D. | H | | | | | | | | | | | | | | | | | | | | | | |
| KFOX Long Beach, Cal. | O | | | | | | | | | | | | | | | | | | | | | | |
| EASTERN <i>Mass., N. Y., Pa., N. C., Etc.</i> | | | | | | | | | | | | | | | | | | | | | | | |
| WPAP-WQAO New York | K | | | | | | | | | | | | | | | | | | | | | | |
| WHN-WRNY New York | K | | | | | | | | | | | | | | | | | | | | | | |
| WPC Philadelphia, Pa. | K | | | | | | | | | | | | | | | | | | | | | | |
| *CFXC Montreal, Que. | P | | | | | | | | | | | | | | | | | | | | | | |
| WMAK Buffalo, N. Y. | O | | | | | | | | | | | | | | | | | | | | | | |
| *WTIC Hartford, Conn. | W | | | | | | | | | | | | | | | | | | | | | | |
| *WBAL Baltimore, Md. | T | | | | | | | | | | | | | | | | | | | | | | |
| *WBT Charlotte, N. C. | S-V | | | | | | | | | | | | | | | | | | | | | | |
| WLWL New York City | S | | | | | | | | | | | | | | | | | | | | | | |
| *WRG Atlantic City, N. J. | S | | | | | | | | | | | | | | | | | | | | | | |
| WPGA Richmond, Va. | S | | | | | | | | | | | | | | | | | | | | | | |
| WDBO Orlando, Fla. | K | | | | | | | | | | | | | | | | | | | | | | |
| WDEL Wilmington, Del. | K | | | | | | | | | | | | | | | | | | | | | | |
| WOV New York City | O | | | | | | | | | | | | | | | | | | | | | | |
| *WHAM Rochester, N. Y. | S-V | | | | | | | | | | | | | | | | | | | | | | |
| WWVA Wheeling, W. Va. | S | | | | | | | | | | | | | | | | | | | | | | |
| WCAU Philadelphia, Pa. | T-W | | | | | | | | | | | | | | | | | | | | | | |
| WINS New York City | K | | | | | | | | | | | | | | | | | | | | | | |
| WABI-WB0-WORC-WLBG | O | | | | | | | | | | | | | | | | | | | | | | |
| WIBX-WD0-WNBW-WNBX | O | | | | | | | | | | | | | | | | | | | | | | |
| WKJC-WGBC-WRBL-WCAZ | O | | | | | | | | | | | | | | | | | | | | | | |
| WJBI-WGBC-WBEL-WCOH | O | | | | | | | | | | | | | | | | | | | | | | |
| WPAP-WPRO-WBAX-WJBU | O | | | | | | | | | | | | | | | | | | | | | | |
| WMBG-W50C-WBCT-CFNB | O | | | | | | | | | | | | | | | | | | | | | | |
| *WCAE Pittsburgh, Pa. | O | | | | | | | | | | | | | | | | | | | | | | |
| *WCAE-WBIS Boston, Mass | O | | | | | | | | | | | | | | | | | | | | | | |
| WPCS State College, Pa. | M | | | | | | | | | | | | | | | | | | | | | | |
| WODA Paterson, N. J. | O | | | | | | | | | | | | | | | | | | | | | | |
| WAAM-WGCP Newark, N.J. | O | | | | | | | | | | | | | | | | | | | | | | |

| Power Code | 5 | 10 | 15 | 20 | 25 | 50 | 75 | 100 | 150 | 200 | 250 | 300 | 500 | 750 | 1000 | 1500 | 2000 | 2500 | 5000 | 10000 | 15000 | 25000 | 50000 |
|---|-----|----|----|----|----|----|----|-----|-----|-----|-----|-----|-----|-----|------|------|------|------|------|-------|-------|-------|-------|
| Call | A | B | C | D | E | F | G | H | I | J | K | L | M | N | O | P | Q | R | S | T | U | V | W |
| Station | | | | | | | | | | | | | | | | | | | | | | | |
| WESTERN <i>Wash., Ore., Cal., Utah, Etc.</i> | | | | | | | | | | | | | | | | | | | | | | | |
| KVOA-KWWG-KRGV Tex M | O | | | | | | | | | | | | | | | | | | | | | | |
| *KOL Seattle, Wash. | O | | | | | | | | | | | | | | | | | | | | | | |
| KFBG Great Falls, Mont. | O | | | | | | | | | | | | | | | | | | | | | | |
| *KDYL Salt Lake City | O | | | | | | | | | | | | | | | | | | | | | | |
| KTRB-KFJR Port., Ore. | O | | | | | | | | | | | | | | | | | | | | | | |
| KMEF-KFAC Los Angeles | O | | | | | | | | | | | | | | | | | | | | | | |
| KGF-KFJ Long Beach, Cal. | O | | | | | | | | | | | | | | | | | | | | | | |
| KRUP-KIT-KTLC-KGFV | O | | | | | | | | | | | | | | | | | | | | | | |
| KID-KTFI Idaho | O | | | | | | | | | | | | | | | | | | | | | | |
| KMB Honolulu, Hawaii | O | | | | | | | | | | | | | | | | | | | | | | |
| KGB San Diego, Cal. | O | | | | | | | | | | | | | | | | | | | | | | |
| KFPY Spokane, Wash. | O | | | | | | | | | | | | | | | | | | | | | | |
| KIDO Boise, Idaho | O | | | | | | | | | | | | | | | | | | | | | | |
| KPSN Pasadena, Cal. | O | | | | | | | | | | | | | | | | | | | | | | |
| KGAR-KFJM-KFBL | O | | | | | | | | | | | | | | | | | | | | | | |
| K00S-KRE-KVL-KFJI | O | | | | | | | | | | | | | | | | | | | | | | |
| *KOH Reno, Nev. | M | | | | | | | | | | | | | | | | | | | | | | |
| KPH Phoenix, Ariz. | O | | | | | | | | | | | | | | | | | | | | | | |
| KLO Ogden, Utah | M | | | | | | | | | | | | | | | | | | | | | | |
| KGRS-WDAG-Marillo, Tex | O | | | | | | | | | | | | | | | | | | | | | | |
| KEOW-KFY-KORE-KRPS | O | | | | | | | | | | | | | | | | | | | | | | |
| KFQU-KGGC-KXL-KGIW | O | | | | | | | | | | | | | | | | | | | | | | |
| *KECA Los Angeles, Cal. | O | | | | | | | | | | | | | | | | | | | | | | |
| KLS Oakland, Cal. | K | | | | | | | | | | | | | | | | | | | | | | |
| *KGA Spokane, Wash. | S | | | | | | | | | | | | | | | | | | | | | | |
| *KFJF Oklahoma City, Okla. | S | | | | | | | | | | | | | | | | | | | | | | |
| KKBB-KUT-KPJM | H | | | | | | | | | | | | | | | | | | | | | | |
| KXO El Centro, Calif. | H | | | | | | | | | | | | | | | | | | | | | | |
| MIDDLE WESTERN <i>Minn., Ia., Neb., Mo., Tex., Etc.</i> | | | | | | | | | | | | | | | | | | | | | | | |
| KWAD Dallas, Tex. | T | | | | | | | | | | | | | | | | | | | | | | |
| *KTHS Hot Springs, Ark. | T | | | | | | | | | | | | | | | | | | | | | | |
| KFBI Milford, Kas. | S | | | | | | | | | | | | | | | | | | | | | | |
| WJAG Norfolk, Neb. | O | | | | | | | | | | | | | | | | | | | | | | |
| WDZ-WCAZ Illinois | H | | | | | | | | | | | | | | | | | | | | | | |
| *KMOX St. Louis, Mo. | W | | | | | | | | | | | | | | | | | | | | | | |
| KSOO Sioux Falls, S. D. | O | | | | | | | | | | | | | | | | | | | | | | |
| *KTRH Houston, Tex. | M | | | | | | | | | | | | | | | | | | | | | | |
| WTAW College Station, Tex | M | | | | | | | | | | | | | | | | | | | | | | |
| XEH Monterey, Mex. | O | | | | | | | | | | | | | | | | | | | | | | |
| *KV00 Tulsa, Okla. | S-V | | | | | | | | | | | | | | | | | | | | | | |
| XETA Mexico City | O | | | | | | | | | | | | | | | | | | | | | | |
| *KEY Portland, Ore. | S | | | | | | | | | | | | | | | | | | | | | | |
| KOB State College, N.M. | V | | | | | | | | | | | | | | | | | | | | | | |
| KERN-KWG-KGEV-KV05 | O | | | | | | | | | | | | | | | | | | | | | | |
| KGY-KGEK-KGFJ | O | | | | | | | | | | | | | | | | | | | | | | |
| KFJ Fresno, Cal. | H | | | | | | | | | | | | | | | | | | | | | | |
| KFXM-KPPC California | H | | | | | | | | | | | | | | | | | | | | | | |
| KTW-KWSC Wash. | O | | | | | | | | | | | | | | | | | | | | | | |
| *KVA San Francisco, Cal. | O | | | | | | | | | | | | | | | | | | | | | | |
| KLPM Minot, N. D. | H | | | | | | | | | | | | | | | | | | | | | | |
| KFOX Long Beach, Cal. | O | | | | | | | | | | | | | | | | | | | | | | |
| EASTERN <i>Mass., N. Y., Pa., N. C., Etc.</i> | | | | | | | | | | | | | | | | | | | | | | | |
| WPAP-WQAO New York | K | | | | | | | | | | | | | | | | | | | | | | |
| WHN-WRNY New York | K | | | | | | | | | | | | | | | | | | | | | | |
| WPC Philadelphia, Pa. | K | | | | | | | | | | | | | | | | | | | | | | |
| *CFXC Montreal, Que. | P | | | | | | | | | | | | | | | | | | | | | | |
| WMAK Buffalo, N. Y. | O | | | | | | | | | | | | | | | | | | | | | | |
| *WTIC Hartford, Conn. | W | | | | | | | | | | | | | | | | | | | | | | |
| *WBAL Baltimore, Md. | T | | | | | | | | | | | | | | | | | | | | | | |
| *WBT Charlotte, N. C. | S-V | | | | | | | | | | | | | | | | | | | | | | |
| WLWL New York City | S | | | | | | | | | | | | | | | | | | | | | | |
| *WRG Atlantic City, N. J. | S | | | | | | | | | | | | | | | | | | | | | | |
| WPGA Richmond, Va. | S | | | | | | | | | | | | | | | | | | | | | | |
| WDBO Orlando, Fla. | K | | | | | | | | | | | | | | | | | | | | | | |
| WDEL Wilmington, Del. | K | | | | | | | | | | | | | | | | | | | | | | |
| WOV New York City | O | | | | | | | | | | | | | | | | | | | | | | |
| *WHAM Rochester, N. Y. | S-V | | | | | | | | | | | | | | | | | | | | | | |
| WWVA Wheeling, W. Va. | S | | | | | | | | | | | | | | | | | | | | | | |
| WCAU Philadelphia, Pa. | T-W | | | | | | | | | | | | | | | | | | | | | | |
| WINS New York City | K | | | | | | | | | | | | | | | | | | | | | | |
| WABI-WB0-WORC-WLBG | O | | | | | | | | | | | | | | | | | | | | | | |
| WIBX-WD0-WNBW-WNBX | O | | | | | | | | | | | | | | | | | | | | | | |
| WKJC-WGBC-WRBL-WCAZ | O | | | | | | | | | | | | | | | | | | | | | | |
| WJBI-WGBC-WBEL-WCOH | O | | | | | | | | | | | | | | | | | | | | | | |
| WPAP-WPRO-WBAX-WJBU | O | | | | | | | | | | | | | | | | | | | | | | |
| WMBG-W50C-WBCT-CFNB | O | | | | | | | | | | | | | | | | | | | | | | |
| *WCAE Pittsburgh, Pa. | O | | | | | | | | | | | | | | | | | | | | | | |
| *WCAE-WBIS Boston, Mass | O | | | | | | | | | | | | | | | | | | | | | | |
| WPCS State College, Pa. | M | | | | | | | | | | | | | | | | | | | | | | |
| WODA Paterson, N. J. | O | | | | | | | | | | | | | | | | | | | | | | |
| WAAM-WGCP Newark, N.J. | O | | | | | | | | | | | | | | | | | | | | | | |

PRINCIPAL SHORT WAVE STATIONS OF THE WORLD

| Meters | Mega* | Dial | Call | Location | Time† | Meters | Mega* | Dial | Call | Location | Time† |
|--------|-------|------|-------|----------------------|--------------|--------|-------|------|-------|---------------------|--------------|
| 17.05 | 17.58 | | | Ship Communications. | | 45.25 | 6.58 | | HKM | Bogota, Colombia | 8-11 |
| 17.34 | 17.30 | | W2XK | Schenectady (WGY) | 11-5 Tu&Sa | 46.40 | 6.48 | | TGW | Guatemala City | 8-10 |
| 19.56 | 15.34 | | W2XAD | Schenectady (WGY) | 2-5 | 46.60 | 6.43 | | REN | Moscow, Russia | noon-5 |
| 19.68 | 15.24 | | FYA | Pontoise, France | 8-2 | 46.70 | 6.42 | | W3XL | New York (WJZ) | |
| 20.75 | 14.48 | | GBW | Rugby, England | | 47.00 | 6.38 | | XIF | Mexico City | 6-8 & 10-11 |
| 20.97 | 14.30 | | | Amateur Stations | Daytime | 47.00 | 6.38 | | HCIDR | Quito, Ecuador | |
| 21.26 | 14.10 | | | | | 47.81 | 6.27 | | HKC | Bogota, Colombia | 7-10 |
| 21.50 | 13.95 | | | Bucharest, Roumania | 1-4 W&Sa | 48.70 | 6.15 | | VE9GL | Winnipeg, Manitoba | 5-10 |
| 22.68 | 13.22 | | | Ship Communications | | 48.80 | 6.14 | | VE9CS | Vancouver, B. C. | 2-4 to 11 Su |
| 23.38 | 12.82 | | | Rabat, Morocco | 7-9 Su & 4-6 | 49.00 | 6.13 | | KZRM | Manila, P. I. | |
| 24.46 | 12.25 | | FTN | Paris, France | 8-noon | 49.00 | 6.12 | | HRB | Honduras | 6-11 |
| 24.80 | 12.10 | | | Tokyo, Japan | 4-7 | 49.00 | 6.11 | | F3CX | Chl-Hoa, Indo China | 5-10 |
| 25.25 | 11.88 | | WSXK | Pittsburgh (KDKA) | noon-8 | 49.18 | 6.10 | | OXQ | New York | 3-4 & 9-11 |
| 25.34 | 11.84 | | W2XE | New York (WABC) | 7-11 | 49.22 | 6.09 | | W3XAL | Copenhagen, Denmark | |
| 25.41 | 11.80 | | I2RO | Rome, Italy | 10-4 | 49.34 | 6.08 | | W9XAA | Chicago (WCFL) | 11-4 |
| 25.43 | 11.79 | | VE9GW | Toronto, Ont. | 5-6 & 1-11 | 49.40 | 6.07 | | UOR2 | Vienna, Austria | |
| 25.45 | 11.78 | | VE9DR | Montreal, Quebec | | 49.50 | 6.06 | | W8XAL | Chinmati (WLV) | 1-3 & 5-11 |
| 25.50 | 11.76 | | XDA | Mexico City | 2-4 & 9-10 | 49.50 | 6.06 | | W3XAU | Philadelphia (WCAU) | 2-11 |
| 25.53 | 11.75 | | G8SW | Chelmsford, England | noon-5 | 49.50 | 6.06 | | | | |
| 25.58 | 11.72 | | VE9JR | Winnipeg, Manitoba | | 49.60 | 6.05 | | VQ7LO | Nairobi, Kenya | 1-3 |
| 25.63 | 11.69 | | FYA | Pontoise, France | 3-5 | 49.60 | 6.05 | | HKD | Colombia | 7-10 |
| 25.65 | 11.68 | | YVQ | Venezuela | 7-10 | 49.98 | 6.00 | | HRB | Honduras | 9-11 |
| 25.68 | 11.63 | | KIO | Kahahu, Hawaii | Afternoons | 49.98 | 6.00 | | REN | Moscow, Russia | 3-5 Su&Th |
| 26.00 | 11.55 | | | Meridia, Yucatan | 11-8 | 50.24 | 5.97 | | HVJ | Rome, Italy | noon-1 Su |
| 27.70 | 10.80 | | GBX | Rugby, England | | 50.60 | 5.92 | | HKO | Medellin, Colombia | 7-10 |

| | | | | | | | | | | | |
|-------|-------|--|-------|------------------------|------------|-------|-------|--|------|---------------------|------|
| 28.97 | 10.35 | | LSY | Buenos Aires, ARG | 6-8 | 51.22 | 5.86 | | HDA | Mexico City | 9-10 |
| 29.30 | 10.25 | | T14 | Heredia, Costa Rica | 7-8 M&W | 52.70 | 5.70 | | | Airports and Planes | |
| 29.80 | 10.10 | | VRT | Hamilton, Bermuda | 7-11 | 55.00 | 5.17 | | | Prague, Czech | 1-3 |
| 30.40 | 9.89 | | EAQ | Madrid, Spain | 7-8 | 68.67 | 4.50 | | | Television | |
| 30.57 | 9.81 | | LSOR | Buenos Aires, ARG | 5-8 | 70.10 | 4.27 | | RV15 | Ship Communications | 4-8 |
| 30.75 | 9.75 | | | Agex, France | 3-4 Tu&F | 71.82 | 4.18 | | | Amateur Stations | |
| 31.26 | 9.59 | | VK3ME | Sydney, Australia | 6-8 Sun | 84.46 | 3.55 | | | Airports and Planes | |
| 31.26 | 9.59 | | PCJ | Eindhoven, Holland | | 85.66 | 3.50 | | | Television | |
| 31.30 | 9.58 | | W3XAU | Philadelphia (WCAU) | noon-5 | 86.70 | 3.47 | | | Television | |
| 31.35 | 9.57 | | W1XAZ | Springfield (WBZ) | 6-9 | 95.40 | 3.14 | | | | |
| 31.38 | 9.56 | | W2XAF | Zeesen, Germany | 2-5 | 105.3 | 2.85 | | | | |
| 31.48 | 9.53 | | OXY | Schenectady (WGY) | 5-9 & 4-10 | 109.1 | 2.75 | | | | |
| 31.51 | 9.52 | | VK3ME | Copenhagen, Denmark | 1-5 | 136.4 | 2.20 | | | | |
| 31.54 | 9.51 | | | Melbourne, Australia | 5 W&Sa | 150.0 | 2.00 | | | | |
| 32.00 | 9.38 | | | Berne, Switzerland | 2-4 | 121.5 | 2.470 | | | | |
| 32.26 | 9.29 | | | Rabat, Morocco | 2-4 Sun | 122.0 | 2.458 | | | | |
| 33.95 | 8.83 | | VK3UZ | Ship Communications | | 122.3 | 2.452 | | | | |
| 34.00 | 8.82 | | W2XV | Melbourne, Australia | 7 M Tu&Th | 123.0 | 2.440 | | | | |
| 34.68 | 8.65 | | | New York | 11 & 6-8 | 124.1 | 2.416 | | | | |
| 36.00 | 8.33 | | 3KAA | Leningrad, Russia | 1-5 | 123.0 | 2.440 | | | | |
| 36.92 | 8.12 | | PLW | Bandoeng, Java | 8 | 123.8 | 2.422 | | | | |
| 37.00 | 8.10 | | RV19 | Tomsok, Siberia | 8-10 | 124.5 | 2.410 | | | | |
| 39.40 | 7.61 | | HKF | Bogota, Colombia | 8-10 | 175.2 | 1.712 | | | | |
| 39.40 | 7.61 | | X26A | Laredo, Mexico | 8-4 | | | | | | |
| 39.80 | 7.53 | | PRADO | Rioabamba, Ecuador | 8-10 | | | | | | |
| 40.90 | 7.32 | | ZTJ | Johannesburg, So. Afr. | 8-1 | | | | | | |
| 41.10 | 7.30 | | VSIAB | Bangkok, Siam | 9-11 Mon | | | | | | |
| 41.70 | 7.19 | | HXX | Singapore | 10-11 W&F | | | | | | |
| 42.00 | 7.12 | | CT1AA | Lisbon, Portugal | 4-6 Fri | | | | | | |
| 42.90 | 6.99 | | | Georgetown, Br. G. | 6-8 W&Su | | | | | | |
| 44.60 | 6.70 | | | | | | | | | | |

*A megacycle is 1,000 Kilocycles, or 1,000,000 Cycles. †Approximate Hours of Broadcast in Central Standard Time. Light faced type midnought to noon. **Dark faced type afternoon to midnight.** The entire contents of this book Copyright, 1932; by Haynes Radio Log, 608 South Dearborn Street, Chicago, Illinois.

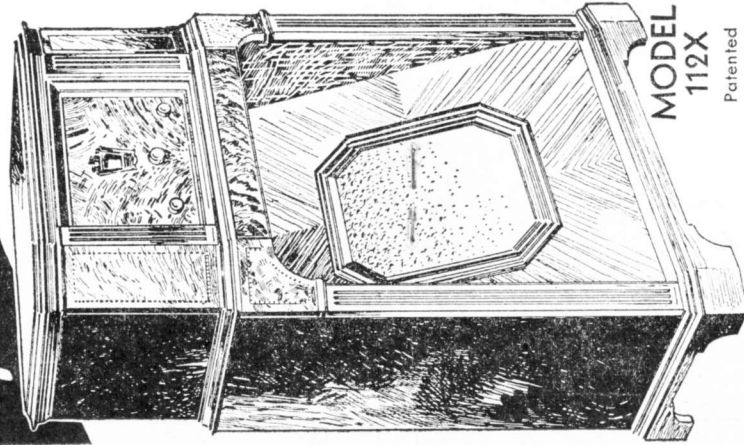
The Musical Instrument of Quality

PHILCO

BALANCED UNIT RADIO

Supreme In Every Price Range

Never before have we been able to offer greater value and greater performance than in the marvelous new PHILCOS now on display — the new Model 112X which looks different, sounds different, is different—a genuine PHILCO Superheterodyne Baby Grand—an authentic Colonial Radio Clock—the new PHILCO Long and Short Wave Combination and other beautiful new models with sensational new features. You must see them! You must hear them!

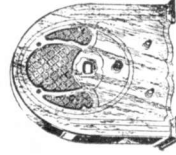


**MODEL
112X**

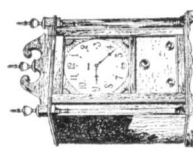
Patented

EASY TERMS

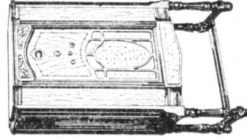
Yes, you can own, on easiest terms, any of the brand new PHILCOS from the T. R. F. Baby Grand at a new low price to the great Radio-Phonograph Combination with Automatic Record Changer. A small down payment and the radio is yours to enjoy now; balance in small weekly or monthly payments. Full details of the ease with which you can own one of these great Musical Instruments of Quality will reveal to you how unnecessary it is to continue with an old and obsolete radio in your home.



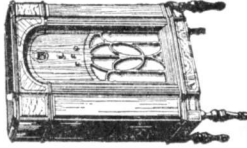
**Model 51
PHILCO
Superheterodyne
Baby Grand**



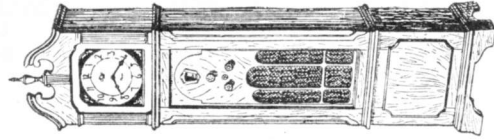
**Model 551 PHILCO
Colonial Clock With
Superheterodyne
Philco Radio**



**Model 70
PHILCO 7-Tube
Superheterodyne
Highboy**



**Model 90
PHILCO 9-Tube
Superheterodyne
Lowboy**



**Model 1570
PHILCO
Grandfathers Clock
With Superheterodyne
Philco Radio**

BY ENTERING YOUR DIAL NUMBERS IN THE SPACES BELOW, YOU
 WILL BE SURE TO TUNE IN YOUR FAVORITE PROGRAMS DAILY.

| HOUR | SUNDAY | MONDAY | TUESDAY | WEDNESDAY | THURSDAY | FRIDAY | SATURDAY |
|------------------|--------|--------|---------|-----------|----------|--------|----------|
| 7 | | | | | | | |
| 8 | | | | | | | |
| 9 | | | | | | | |
| 10 | | | | | | | |
| 11 ⁰⁰ | | | | | | | |
| 11 ³⁰ | | | | | | | |
| 12 ⁰⁰ | | | | | | | |
| 12 ³⁰ | | | | | | | |
| 1 ⁰⁰ | | | | | | | |
| 1 ³⁰ | | | | | | | |
| 2 ⁰⁰ | | | | | | | |
| 2 ³⁰ | | | | | | | |
| 3 ⁰⁰ | | | | | | | |
| 3 ³⁰ | | | | | | | |
| 4 ⁰⁰ | | | | | | | |
| 4 ³⁰ | | | | | | | |
| 5 ⁰⁰ | | | | | | | |
| 5 ³⁰ | | | | | | | |

| | | | | | | | |
|------------------|--|--|--|--|--|--|--|
| 6 ⁰⁰ | | | | | | | |
| 6 ¹⁵ | | | | | | | |
| 6 ³⁰ | | | | | | | |
| 6 ⁴⁵ | | | | | | | |
| 7 ⁰⁰ | | | | | | | |
| 7 ¹⁵ | | | | | | | |
| 7 ³⁰ | | | | | | | |
| 7 ⁴⁵ | | | | | | | |
| 8 ⁰⁰ | | | | | | | |
| 8 ¹⁵ | | | | | | | |
| 8 ³⁰ | | | | | | | |
| 8 ⁴⁵ | | | | | | | |
| 9 ⁰⁰ | | | | | | | |
| 9 ¹⁵ | | | | | | | |
| 9 ³⁰ | | | | | | | |
| 9 ⁴⁵ | | | | | | | |
| 10 ⁰⁰ | | | | | | | |
| 10 ¹⁵ | | | | | | | |
| 10 ³⁰ | | | | | | | |
| 10 ⁴⁵ | | | | | | | |

