

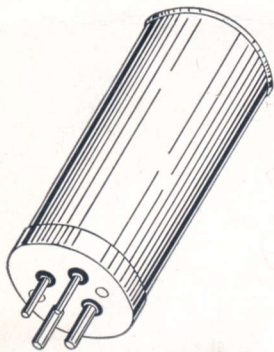
PHILCO VIBRATORS

.... BOTH TYPES

providing replacement for any

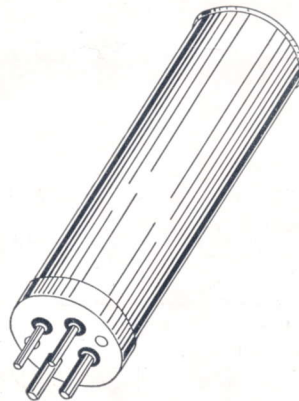
PHILCO-equipped car

NOW AT THIS TREMENDOUS SAVING!



Part No. 41-3186

The standard replacement unit for all Philco auto radios up to and including 1935 models, also the 1936 Model 816. Extra-rugged construction insures long, trouble-free service. Has proved its dependability over a period of years, both as initial and replacement equipment. Standard four-prong mounting. Dimensions $4\frac{11}{16}$ " x $2\frac{3}{8}$ " (not including prongs).



Part No. 41-3170

The unit used in the 1936 Philco auto radios (except Model 816). While even smaller and more compact than previous types, it provides the same high-quality performance. Full wave, and with the standard four-prong base. Dimensions, $3\frac{7}{8}$ " x $1\frac{15}{16}$ " (not including prongs).

NOISELESS, EFFICIENT POWER FROM PHILCO VIBRATORS

Philco Vibrators provide (1) Dependability; (2) Long life; (3) Maximum output; (4) Silent operation; (5) Freedom from need of readjustments. Throughout the full length of their life, these vibrators render consistent trouble-free performance; and their operation introduces no noise or disturbance to interfere with radio reception

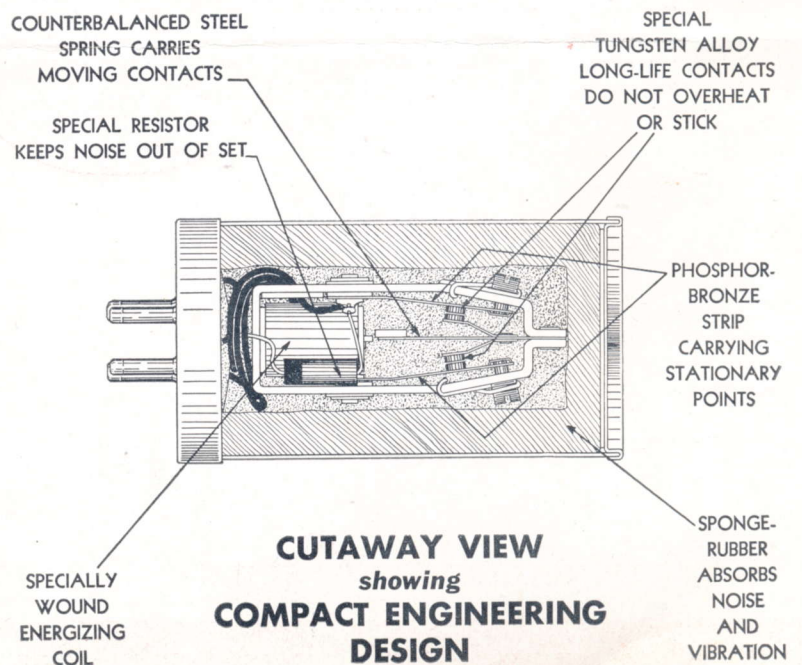
PRECISION DESIGN ELIMINATES BREAKDOWNS

ACCURACY THROUGHOUT

Philco QUALITY Vibrators are designed by engineers having years of experience with this type of equipment. Each unit is subjected to rigid inspection and test throughout the various stages of manufacture. Definite standards of performance are established and must be maintained in every Philco vibrator you buy.

INSURES SATISFIED OWNERS

You can sell a Philco Vibrator to your customer with the assurance that it will give him 100 per cent performance, and that he will be a permanent friend and booster for you and Philco. And through each purchaser more will come to you as a result of his "word-of-mouth" advertising.



CAR AERIALS *for* ROOF *or* RUNNING BOARD

New PHILCO CAR-TOP AERIAL



MEETS THE DEMAND

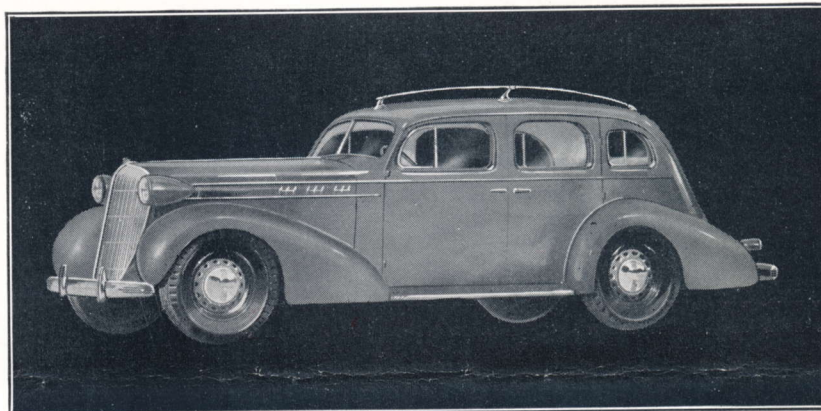
for

A STREAMLINED ROOF-AERIAL THAT WITHSTANDS VIBRATION AND GIVES MAXIMUM PERFORMANCE



Smartly modern in appearance and engineered to produce maximum performance and easiest installation possible for a permanent job. Overcomes all the difficulties experienced with other over-the-roof aerials.

Consists of an 80" solid stainless steel rod, in two sections, secured to the roof by streamlined stanchions, one of which carries the lead-in into the car. A marvelous combination of simplicity, beauty and efficiency—easy to sell on appearance alone; easier still when you are set up to demonstrate its fine performance.



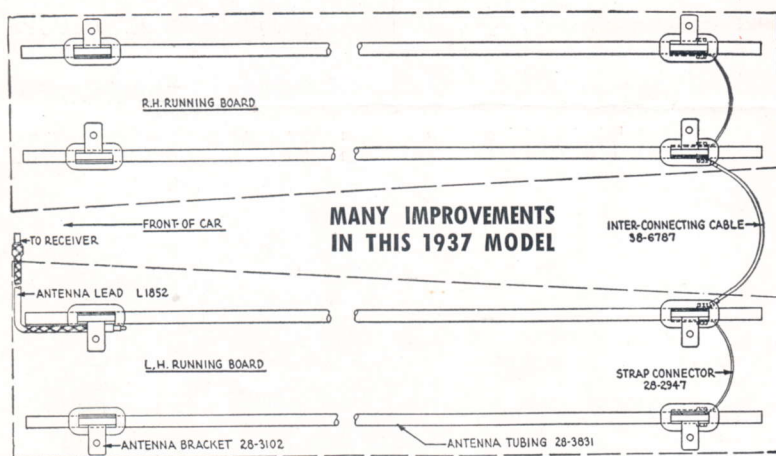
- ★ SMART, MODERN APPEARANCE
- ★ PERMANENT WATERTIGHT MOUNTING
- ★ UNAFFECTED BY ROAD CONDITIONS
- ★ ELIMINATES IGNITION AND TIRE STATIC

CAR OWNERS BUY ON SIGHT!

Part No. 45-2351

List Price **\$5⁰⁰**

1937 Improved UNDER-CAR AERIAL



Part No. 45-2184

Perfected by Philco Engineering Department
After Exhaustive Field Tests

The New Philco Under-Car Aerial is the most efficient and practical under-car radio aerial of any we have ever tried. Combining maximum performance, ease of installation and ruggedness under all conditions, it has no equal on the market.

From the illustration you will note it actually consists of two double aerials, connected together at the rear of the car, so that a large pick-up area is provided. All parts are built to withstand vibration, road shocks, and all possible weather conditions—in fact, it will last as long as the car itself.

Will fit any car requiring this type aerial; can be installed in a short time without special equipment. Connections between the sections of the antenna are already made and a shielded lead-in provided for connection to the receiver.

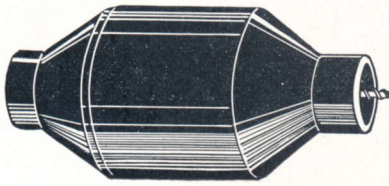
- Easy to Install
- Extremely Rugged
- No Assembling Required
- Fits Any Car
- No Movable Parts
- Ideal for Open Cars

LIST PRICE
\$5⁰⁰

YOUR DISTRIBUTOR CAN MAKE PROMPT SHIPMENT!

NECESSARY *Auto-Radio* ACCESSORIES

**Complete Suppression . . .
with ONE SMALL UNIT!**



PHILCO INDUCTIVE SUPPRESSOR

Imagine one small, inexpensive unit taking care of the elimination of *all* ignition interference on a car installation! That's what the new Philco inductive suppressor does.

In practically any modern car installation, this specially designed inductive suppressor is *all* you need to give perfect freedom from motor noises. Its high impedance stops the disturbing r-f currents; its low d.c. resistance prevents it from affecting the car's performance.

Try one on a particularly difficult or noisy job—such as on an old car or set. You'll be surprised at the results.

Part No. 32-2250

List Price \$0.75

PILOT LAMPS *for* CAR RADIOS



★
**PHILCO
QUALITY**
★



★
**LONG
LIFE**
★



34-2031

6608

34-2038, 39, 40

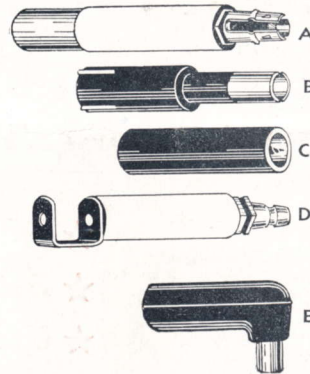
Part No.	Philco Models Used In	List Each
6608	3, 5, 6, 7, 8, 9, 10, 11, 12, 800, A, B, C, D, H	\$0.09
34-2031	700, DPV, E, G (121), Q, R	.10
34-2038	1934 Ford Car Radio (FN)	.07
34-2039	800 (122), 805, -6, -8, -9, 816, -17, -18, -19, C, D, G, H, R, (All Code 122), T-2, -6, -7, -10, -11, -15	.07
34-2040	802, 810P, 811P, T-3, T-5, T-7, T-8, T-12, T-14, NT-15	.07

SUPPRESSION MATERIAL

Resistors and Interference Condensers

These resistor suppressors were standard equipment on Philco car radios from 1932 to 1935—the replacement market therefore is tremendous. They will stand up under severest conditions; are not affected by the extreme heat of the motor; do not change their resistance value.

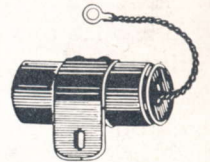
RESISTORS



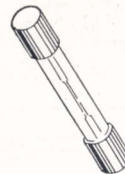
FOR SPARK PLUGS			
Part No.	Type	Ohms	List
4531	D	25,000	\$0.30
33-1015	E	10,000	.30
33-1016*	E	20,000	.30
33-1017*	C	20,000	.30
33-1101†	E	5,000	.30
33-1102†	B	5,000	.30
33-1195	E	10,000	.30
33-1192	D	5,000	.30
*Special for Packard. †Special for Nash.			
FOR DISTRIBUTOR			
Part No.	Type	Ohms	List
4546	A	25,000	\$0.30
4851	B	25,000	.30
33-1103†	C	5,000	.30
33-1113	B	10,000	.30
33-1196	C	10,000	.30

CONDENSERS

Part No.	Mfd.	List
4522	1	\$0.75
30-4450	1	.75
30-4007	0.5	.50
30-4176*	0.5	.50
30-4181*	0.5	.50
*Special for Ford Cars.		



FUSES



Part No.	Amperes
4540	1
45-2046	3
7331	8
5676	10
7227	15

**Cartridge Type
for Clip
Mounting**

**LIST EACH
5c**

TIRE-STATIC ELIMINATOR

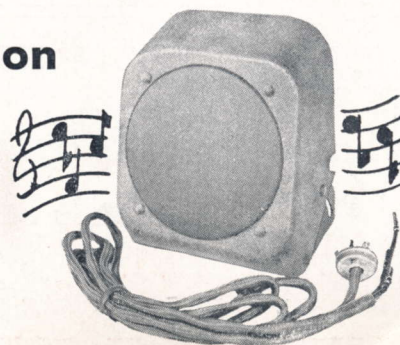
"Tire static"—a roaring noise sometimes experienced in car radios as a result of charges of static electricity developing in the front tires and discharging through the bearings,—is completely stopped by the installation of a pair of these simple little devices. Easily installed under the front wheel hub caps. Special tension phosphor-bronze springs ground the front wheels to the axle and entirely remove the disturbance.



**PART NO. 28-3584
LIST PER PAIR \$0.70**

6-VOLT SPEAKER: Auxiliary or Extension

Here is a real **QUALITY** electrodynamic speaker, for installation in any part of the car—either as an additional speaker or an extension speaker. Ideal for use in large cars, buses, motorboats, etc., where additional sound coverage is needed. Adjustable bracket permits tilting at any angle. Covered with velour cloth designed to match car upholstery. Complete with 7-foot cable and "on-off" switch.



**Splendid Tone
Quality!**

Part No. 40-8182

**LIST
PRICE
\$10⁰⁰**