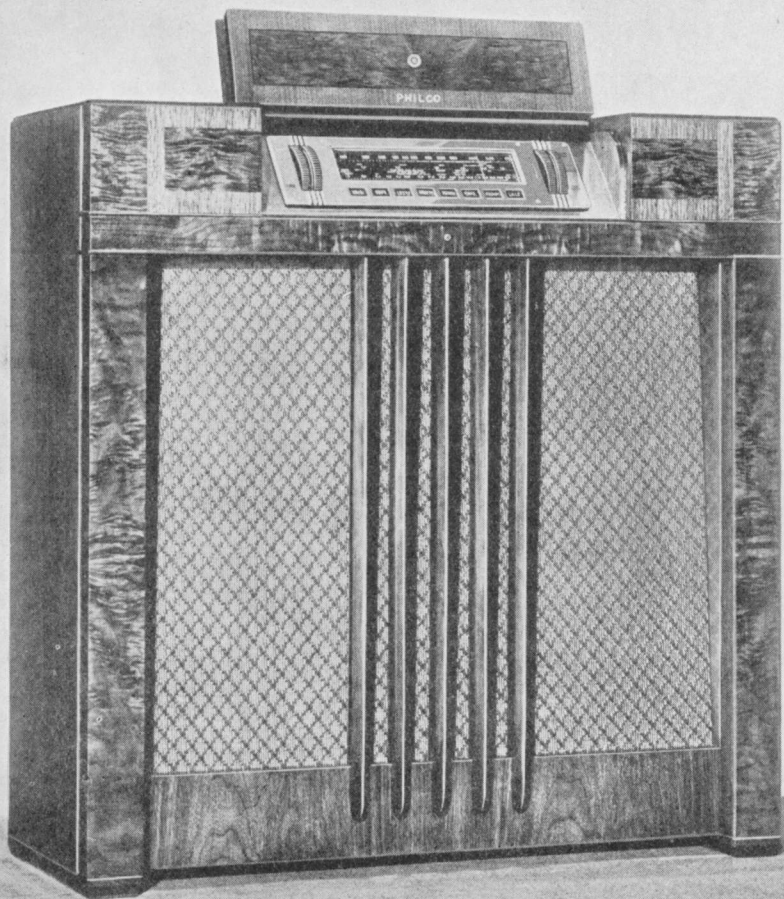




*hurry home*

*to your*

**PHILCO**



# MYSTERY

*An exclusive*

Here is real "wireless wireless" —the most amazing radio invention since radio itself. The receiving set, the handsome "Spinnet" cabinet on this page, can be tuned by hand or (and here is the mystery) it can be controlled by the unit shown on page 3. There are no wires, no cords, no connections between the remote control unit and the set. You may carry the unit upstairs, into another room, out into the garden, and still change the station on your set, make it louder or softer, or even shut it off.



# CONTROL

*Philco invention*

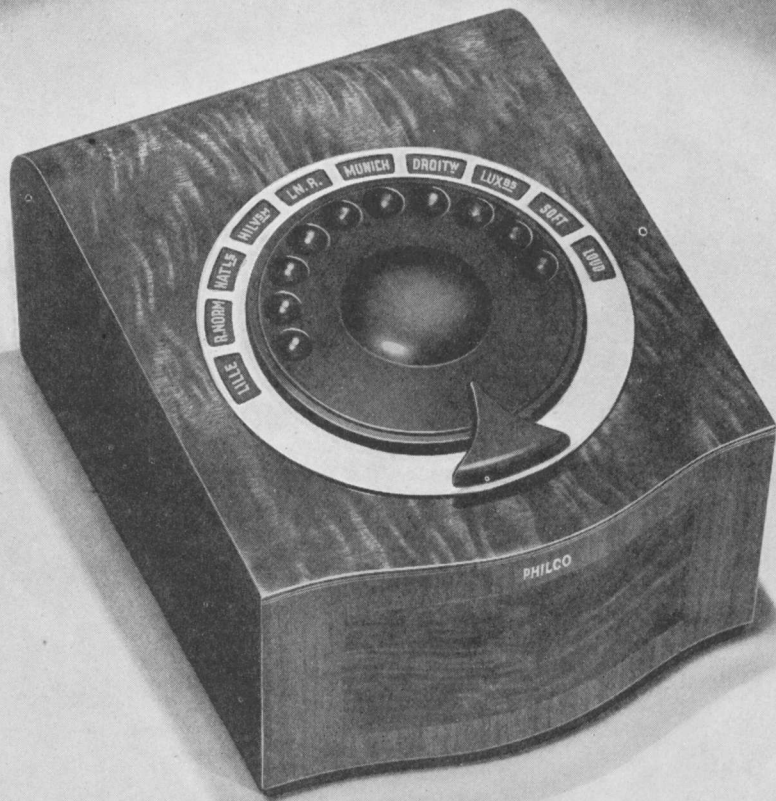
The receiver itself is a really magnificent 14-valve super-het with two short and one medium waveband. Any two long wave stations from 1,000 to 2,000 metres can be tuned on the Mystery Control.

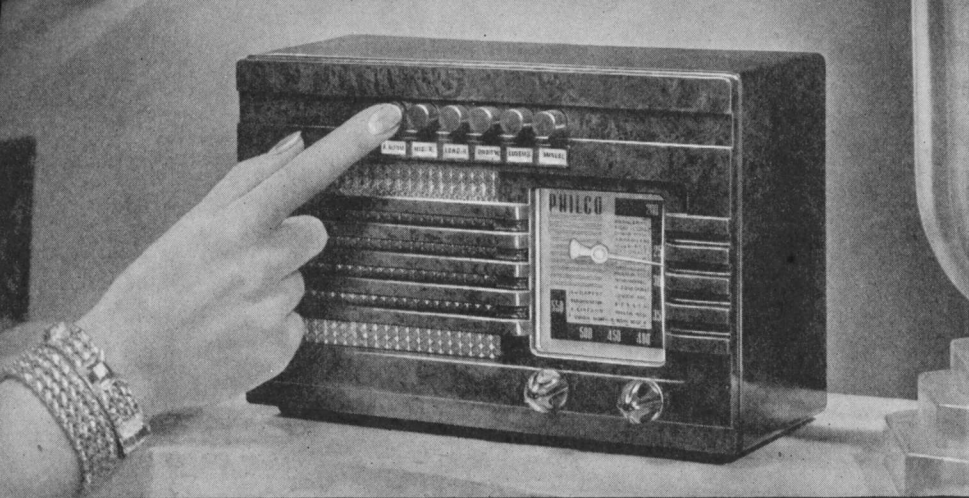
There is provision for television add-on unit and gramophone pick-up.

The Cathedral Speaker, mounted on an inclined sounding board, incorporates many new features giving not only richness and depth of tone but an amazing life-like quality.

The Mystery Control Unit measures only 5×7×9 inches.

**70** GUINEAS COMPLETE  
for AC Mains





# The Philco A-1

Here is one of the greatest accomplishments of the engineering staffs of the World's Largest Makers of Radio Sets—a set measuring only  $8\frac{1}{2}$  inches wide and  $5\frac{3}{8}$  inches high, but of such amazing performance, such real quality of tone and volume, sensitivity and breadth of range, that it takes its place with sets of far greater dimensions. The ideal set for house or flat, where space is precious. Newly developed Philco Valves consume just half the current required for the average set.

**5-valve super-het for AC 7 Gns.  
Mains. Brown Cabinet**

**Cream Cabinet  $7\frac{1}{2}$  Gns.**

# The Philco A-1 Table RADIOGRAM

Incorporating the A-1 chassis is this radiogram for the lover of recorded music as well as radio. The same characteristics—more than ample volume, great selectivity, full rich tone—are found in the radiogram. It is housed in a beautiful cabinet of walnut. In every way “a musical instrument of quality.”

5-valve super-het for  
AC Mains, Radiogram **15** gns.



# The Philco MAJOR

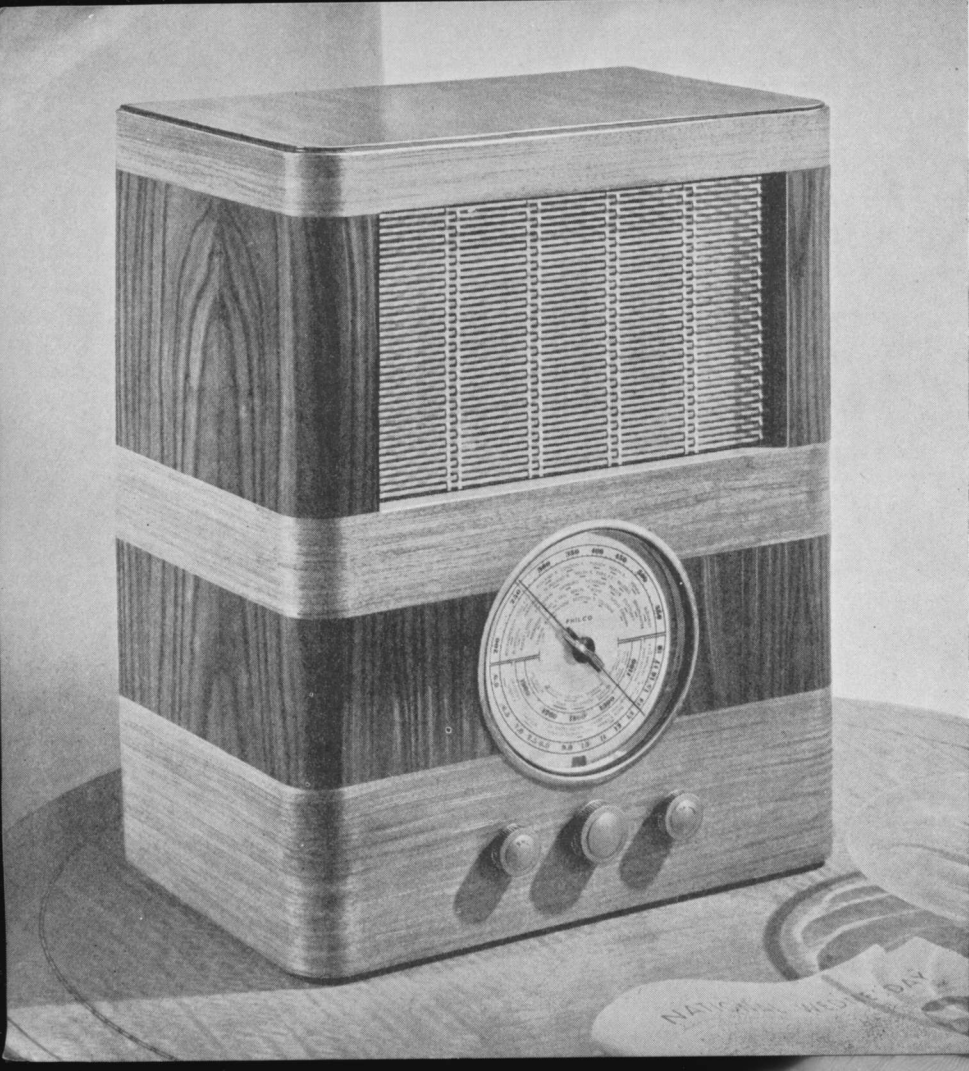
If you are off the mains, or if you prefer a battery-operated set, the Philco Battery Major offers you really delightful quality of tone and exceptional all-wave performance, particularly on the short waves.

Here it is unusually free from crackle and interference.

In a cabinet of the same design is the Universal Major for use on AC or DC mains.

Both Majors operate on three wavebands, have slow motion tuning, the latest type 8" permanent magnet speakers. A feature of the Battery Major dial is a mechanical indicator which shows red when the set is on but saves the consumption of a pilot light.

**Battery Major**  
**or for AC/DC Mains**  
**Universal Major** **10 gns.**

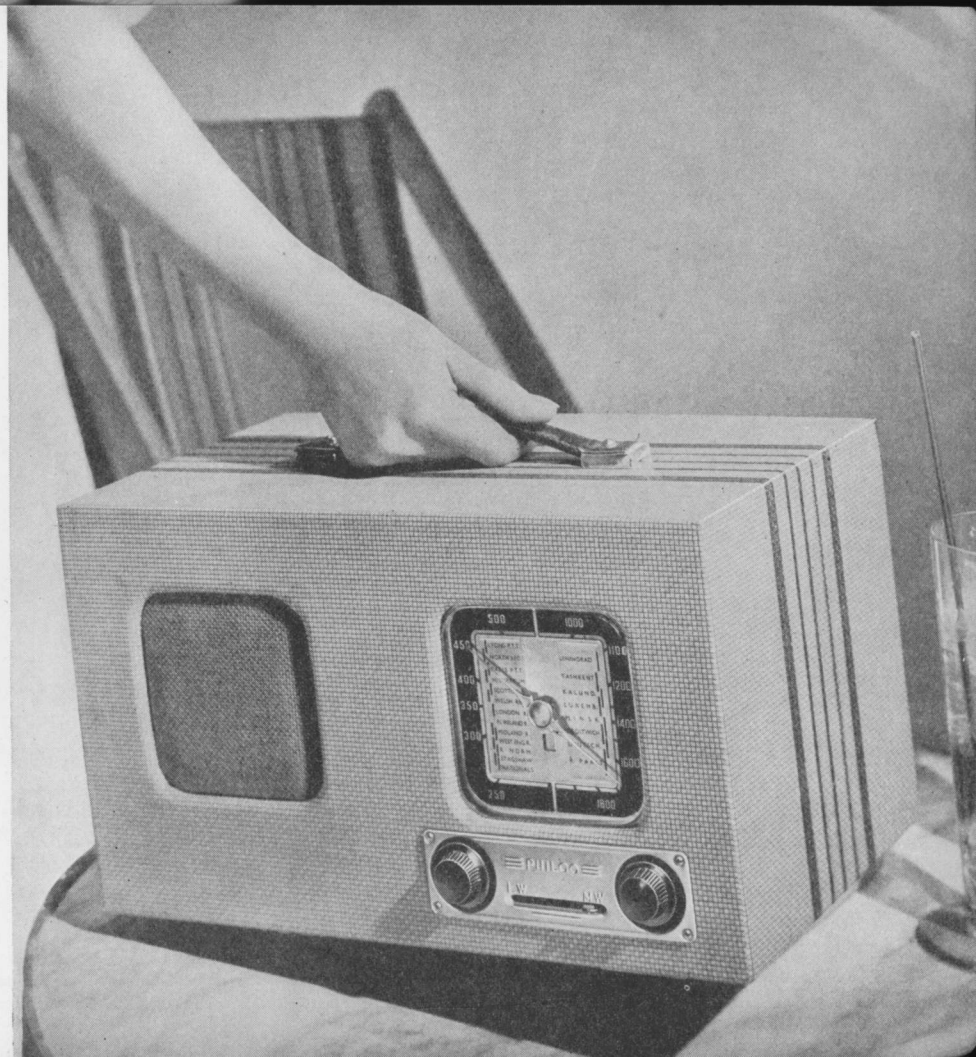


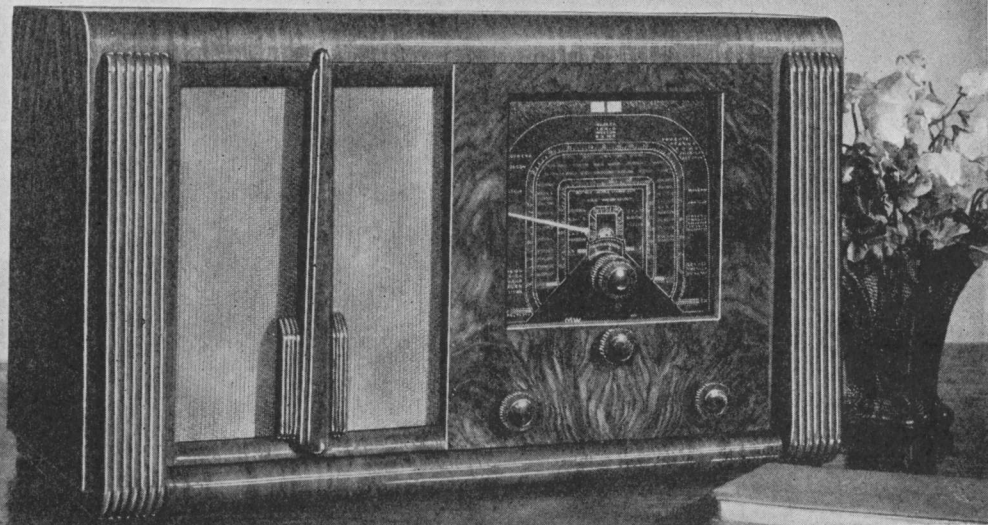


# The most portable of PORTABLES

No set could be more ideally suited for A.R.P. equipment or for ordinary portable use. Good looking—permanently so, for the cabinet is washable—it is even better in operation than it looks. No wet accumulator to spill or to need re-charging when wanted most. No outside attachments of any kind. It is constantly ready for use—anywhere, any time. 200 hours' operation without renewal of batteries. Weighs only 15½ pounds. Long and medium wavebands. 4-valve super-het.

**The Philco Battery** **9½ gms.**  
**Portable model P429**





# The Empire Six

DE LUXE

## SUPER-HET

Short-wave tuning of this six-valve super-het is exceedingly simple. The illuminated glass dial is in three colours to denote the three wavebands, and Philco's exclusive shadow tuning combined with micrometer tuning allows the operator to get the full value of its great selectivity and delicate sensitivity with ease. The cabinet is carefully chosen, beautifully figured butt walnut.

Large moving coil speaker-sockets for extension speakers and gramophone pick-up. Full-vision, spreadband scale with 89 stations. The Empire Six is also available in a handsome upright cabinet without shadow tuning.

For AC Mains  
Empire Six de Luxe model **13½** gns.  
C.A. 658

Empire Six all-wave  
super-het model **12** gns.  
C.658

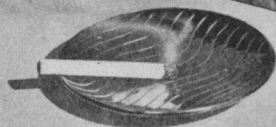
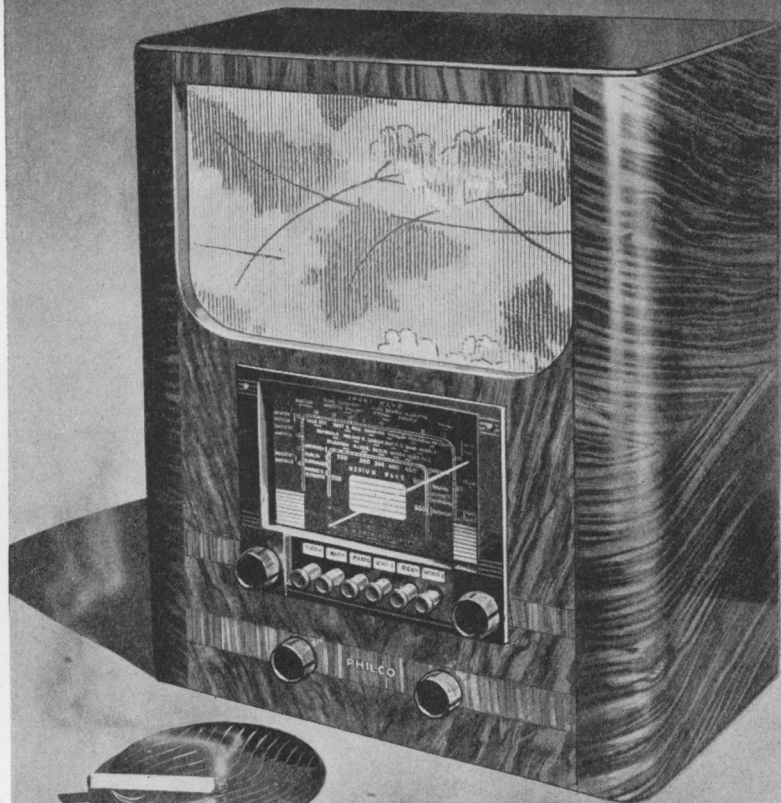


# The Big Six



The six press buttons of the Big Six give automatic tuning of eight stations — six on the medium and two on the long waves. Here is a powerful all-wave super-het with large glass-lit dial bearing station names. Short-wave reception from 6 to 18 megacycles, medium wave from 200 to 550 metres, and on the long wave from 1,100 to 1,900 metres. It has tone control and automatic volume control. Reception on all wavebands is remarkably free from interference and the special auditorium speaker has a wonderful tone. The cabinet is of highly figured walnut.

**The Big Six (model A559)  $11\frac{1}{2}$  gns.**  
**For AC Mains**



# THE LUXEMBOURG MODELS

Real value for the listener off the mains is the Luxembourg Battery Model. Three Philco high-efficiency valves with a large permanent magnet speaker, give reproduction and station selection of exceedingly high quality. Its features include very sharp selectivity, large dial with station names and metres, automatic grid bias, no separate grid bias battery required, consumption only  $8\frac{1}{2}$  milliampères.

**Model P322 £5.10**

The Luxembourg AC super-het is a four-valve model with full automatic volume control and great power. Fully energised moving coil speaker giving perfect reproduction. An unbeatable value for a set to operate on AC Mains.

**Model A421 6 gns.**



# PHILCO CAR RADIO

What a lot of pleasure a radio adds to motoring. And how reasonable in price a Philco Car Radio is today. The model M522 pictured here, is a five-valve super-het. Operates on two wavebands. Requires no plug suppressors. 6 or 12 volt models. Easily and quickly installed in small or large cars.

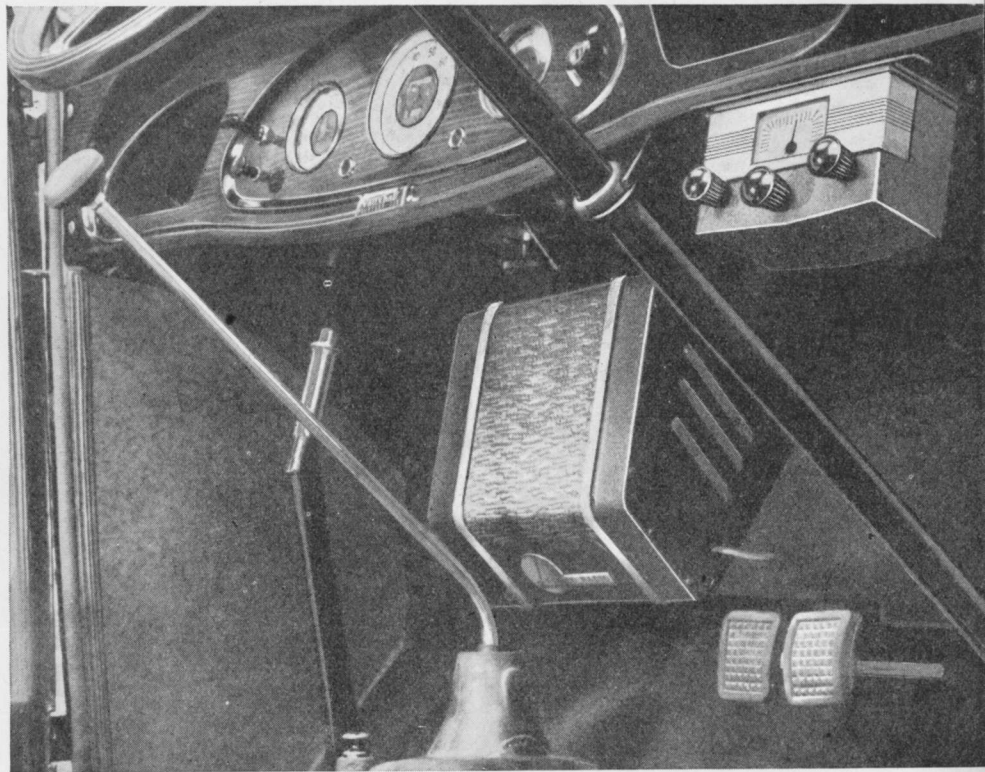
**Model M522 13 gns.**

There are also de Luxe models as follows:

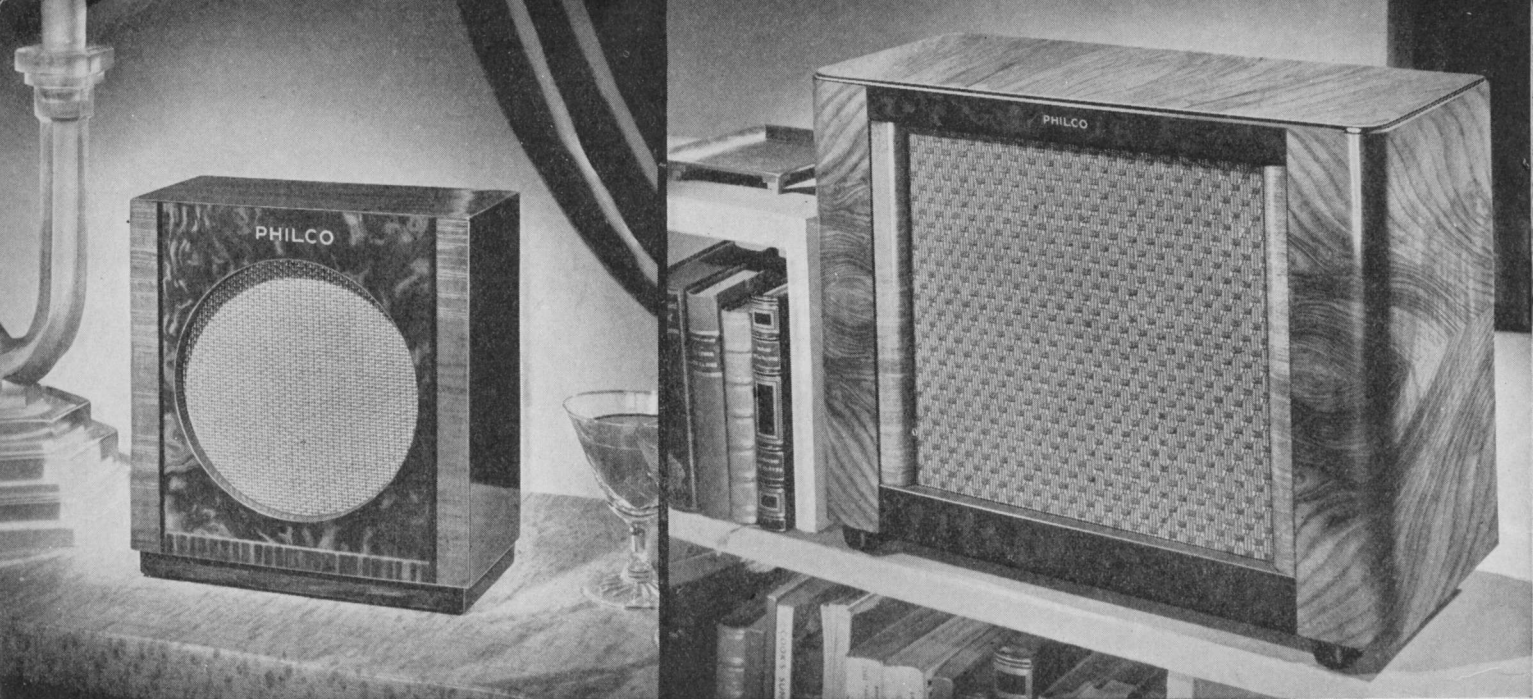
**6-valve, model K 628 15 gns.**

**7-valve, model K 728 18 gns.**

**7-valve with extension speaker, model L 728 20 gns.**







**PHILCO EXTENSION SPEAKERS** add a great deal to radio enjoyment at very little extra cost. They virtually provide a set in every room in which there is a unit. Here are the Y 2 at **29/6** and the Y 3 (table model) for the best possible tone, at **72/-**

*Prices, descriptions and illustrations of the products in this catalogue are correct at the time of going to press, but all are subject to variation without notice.*