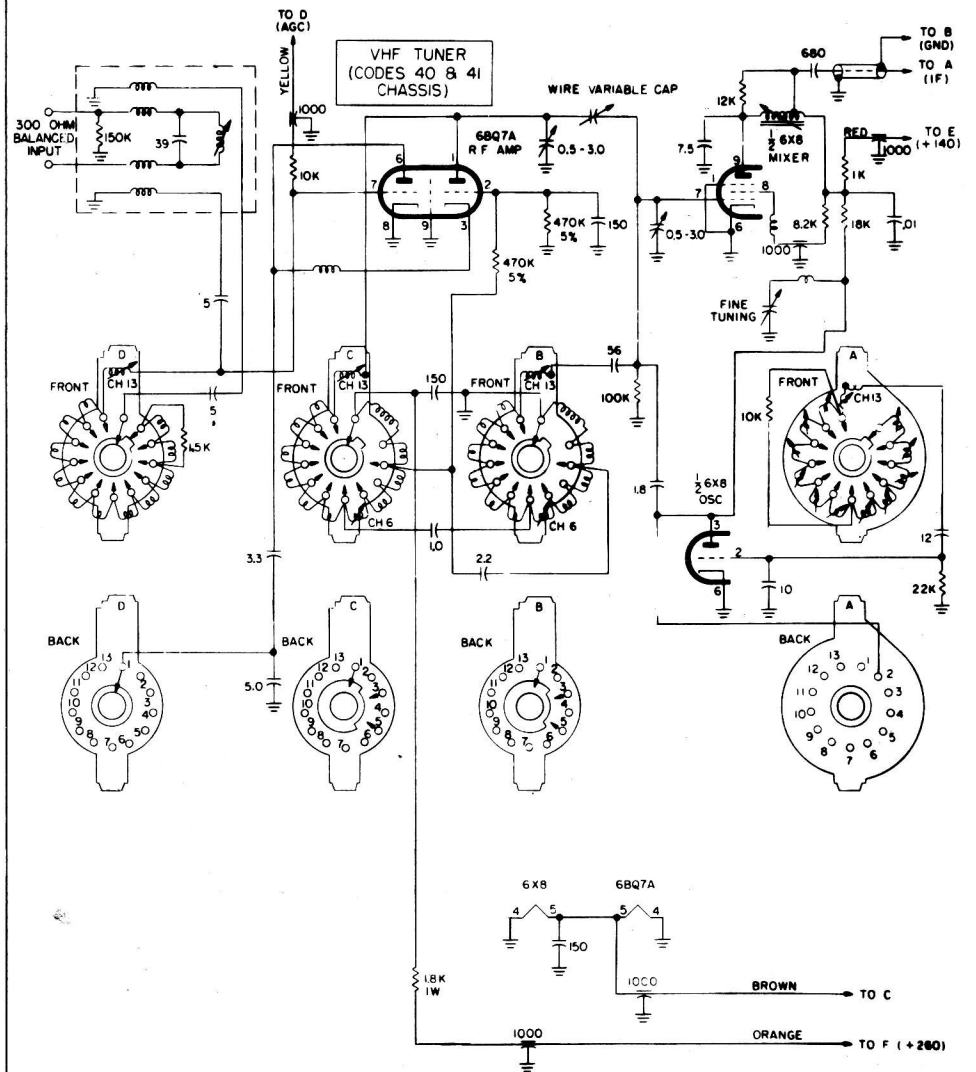
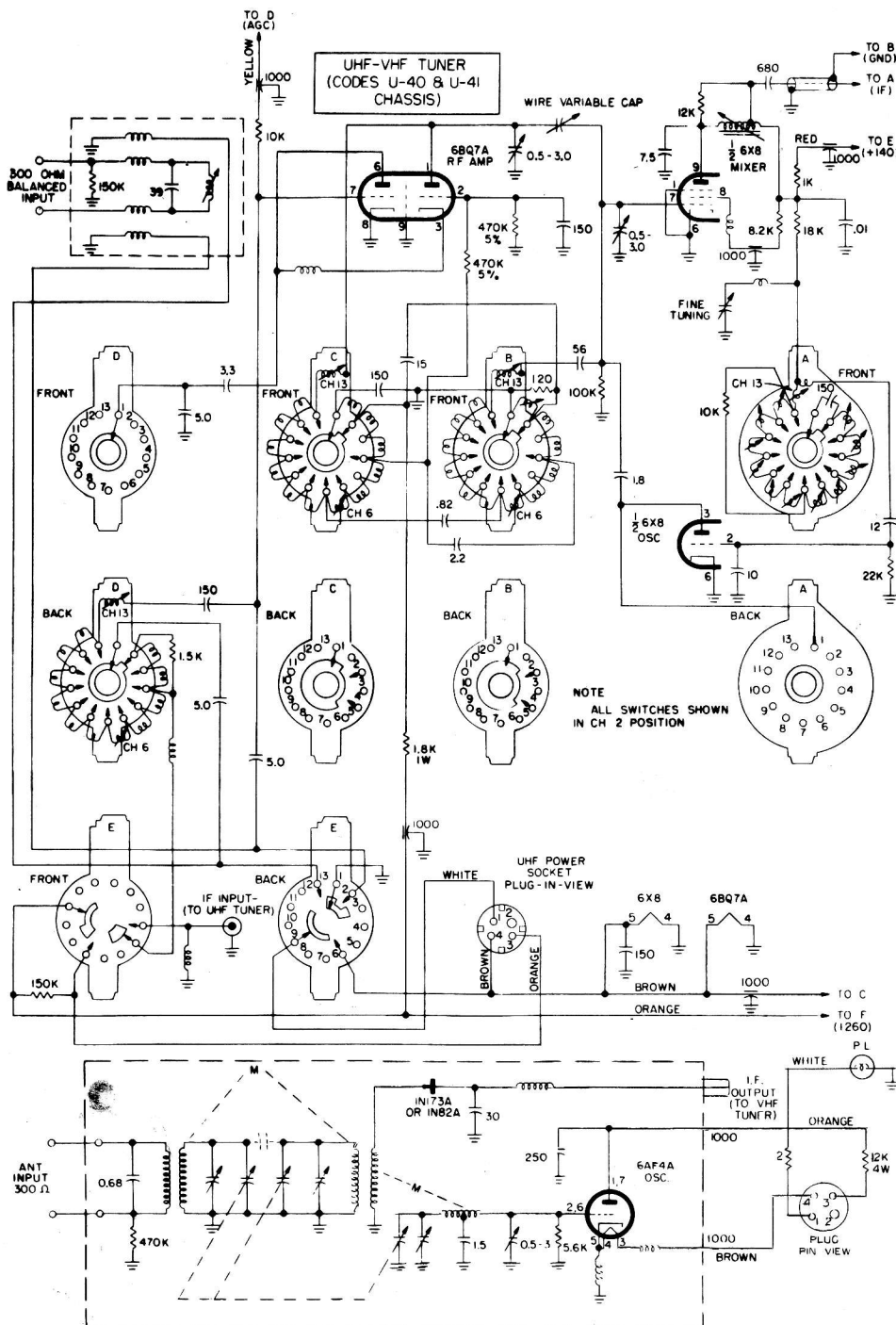


PRELIMINARY SCHEMATIC

FOR SERVICE TECHNICIANS ONLY

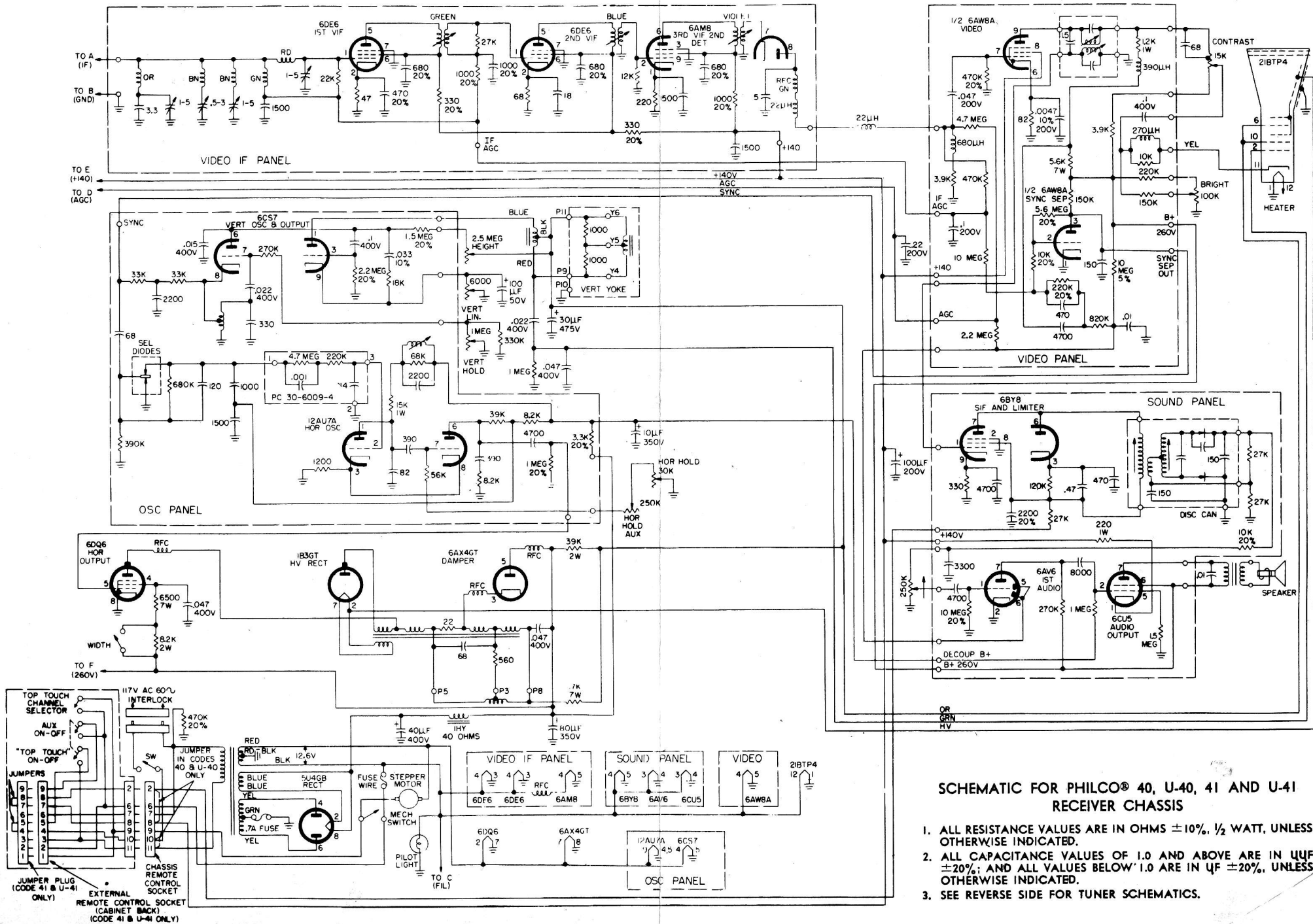


SCHEMATIC FOR TUNERS USED IN PHILCO® 40, U-40, 41 AND U-41 CHASSIS

1. ALL RESISTANCE VALUES ARE IN OHMS $\pm 10\%$. $\frac{1}{2}$ WATT, UNLESS OTHERWISE INDICATED.
2. ALL CAPACITANCE VALUES OF 1.0 AND ABOVE ARE IN μF $\pm 20\%$; AND ALL VALUES BELOW 1.0 ARE IN μF $\pm 20\%$, UNLESS OTHERWISE INDICATED.
3. SEE REVERSE SIDE FOR RECEIVER SCHEMATIC.

PRELIMINARY SCHEMATIC

FOR SERVICE TECHNICIANS ONLY



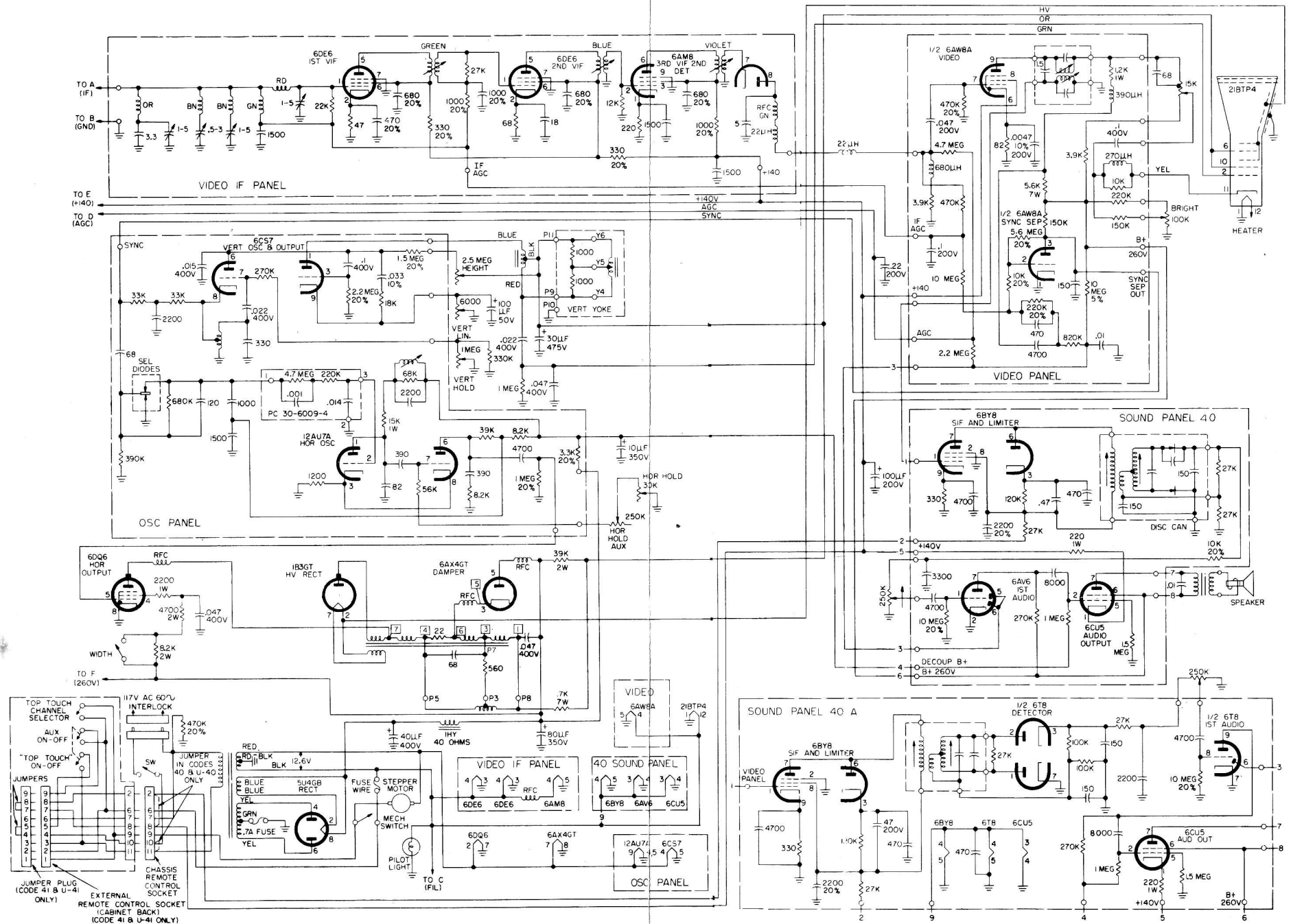
SCHEMATIC FOR PHILCO® 40, U-40, 41 AND U-41 RECEIVER CHASSIS

1. ALL RESISTANCE VALUES ARE IN OHMS $\pm 10\%$. $\frac{1}{2}$ WATT, UNLESS OTHERWISE INDICATED.
2. ALL CAPACITANCE VALUES OF 1.0 AND ABOVE ARE IN μUF $\pm 20\%$; AND ALL VALUES BELOW 1.0 ARE IN μF $\pm 20\%$, UNLESS OTHERWISE INDICATED.
3. SEE REVERSE SIDE FOR TUNER SCHEMATICS.

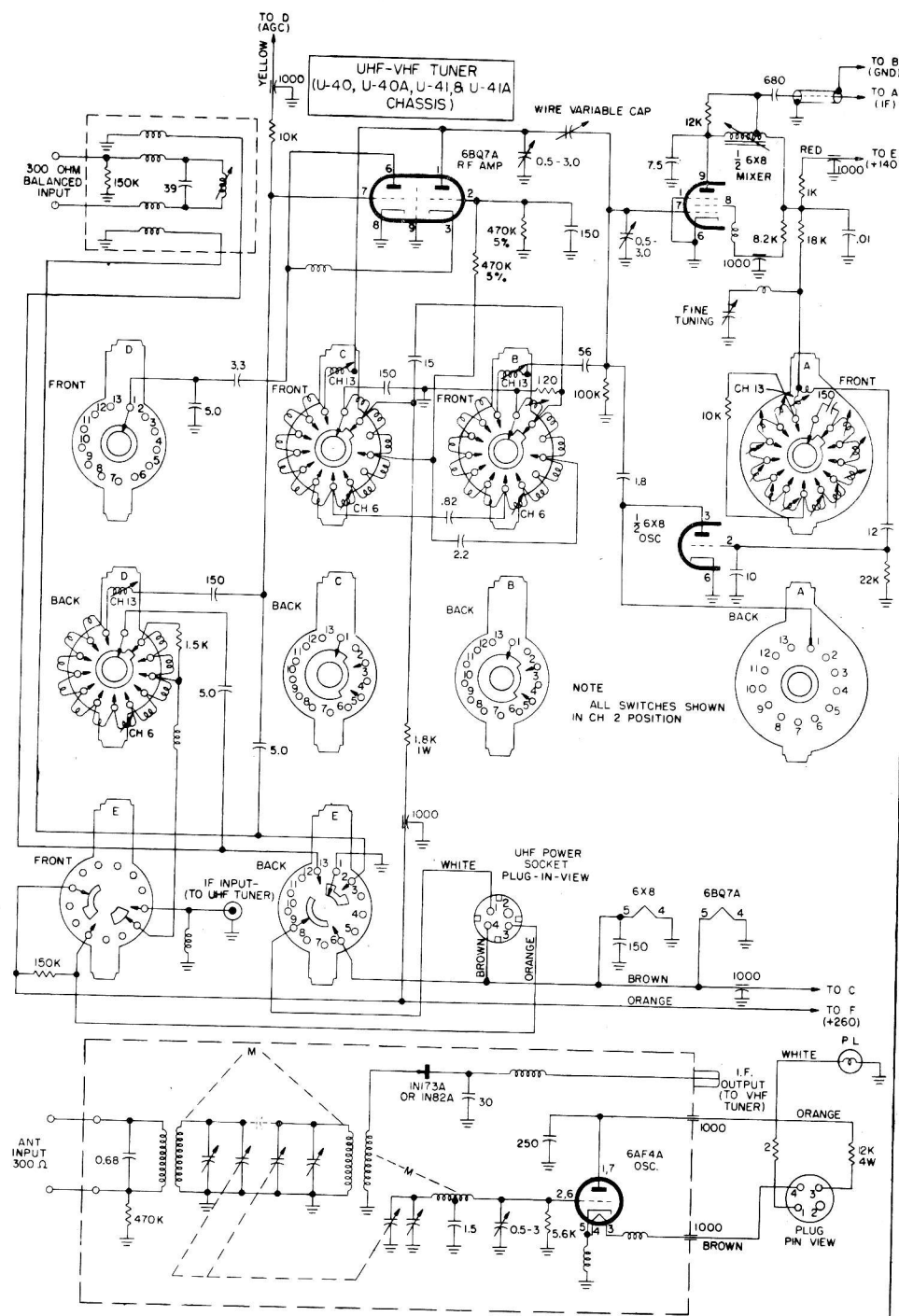
PRELIMINARY SCHEMATIC

SCHEMATIC FOR PHILCO® RECEIVER CHASSIS, 40, U-40, 41, U-41, 40A, U-40A, 41A, U-41A SEE REVERSE SIDE FOR NOTES AND TUNER SCHEMATICS.

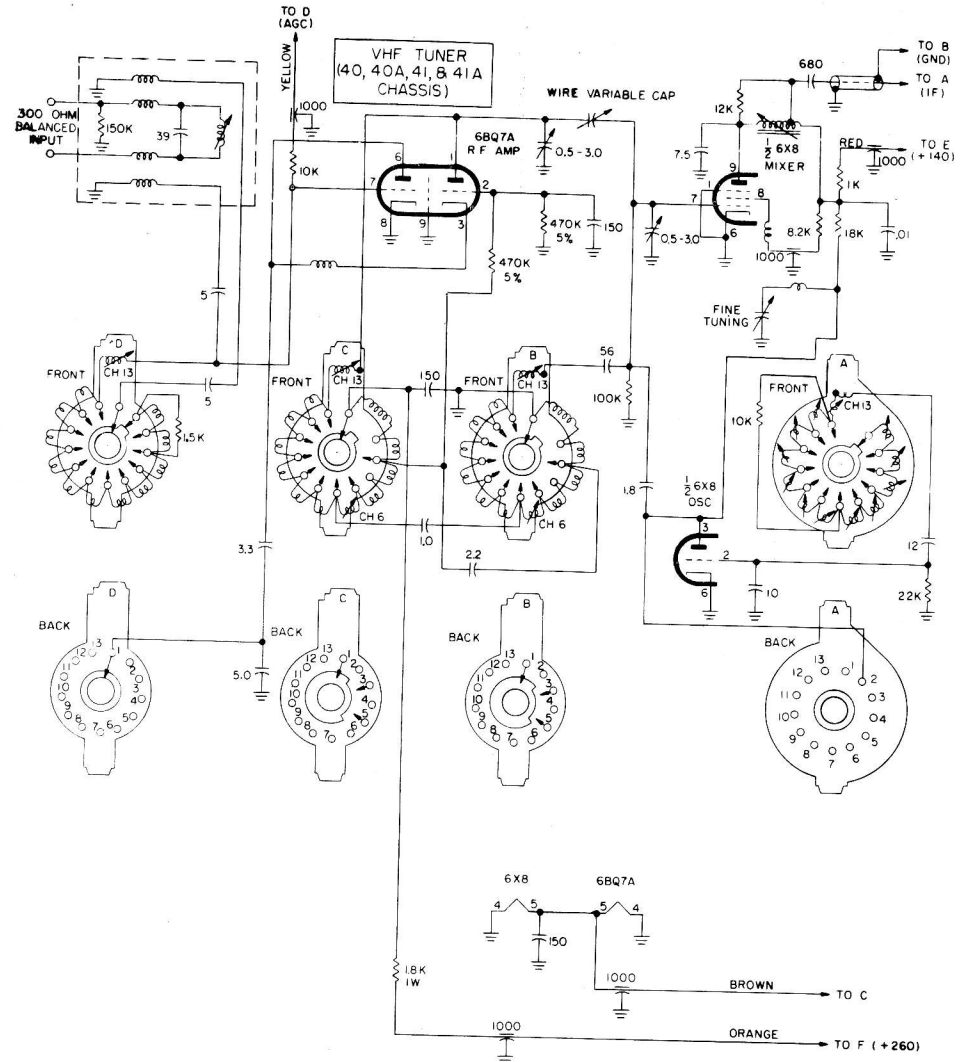
FOR SERVICE TECHNICIANS ONLY



PRELIMINARY SCHEMATIC



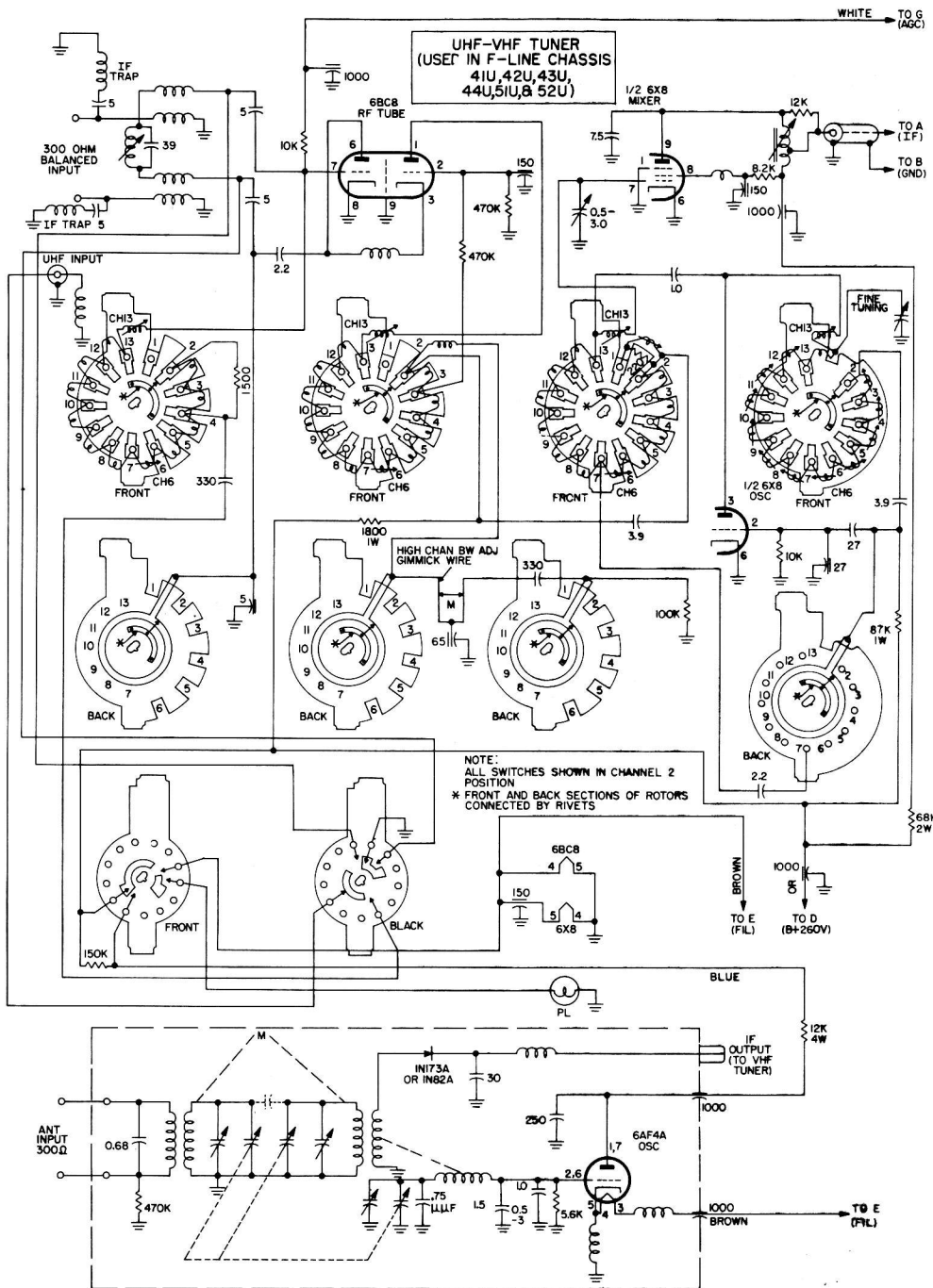
FOR SERVICE TECHNICIANS ONLY



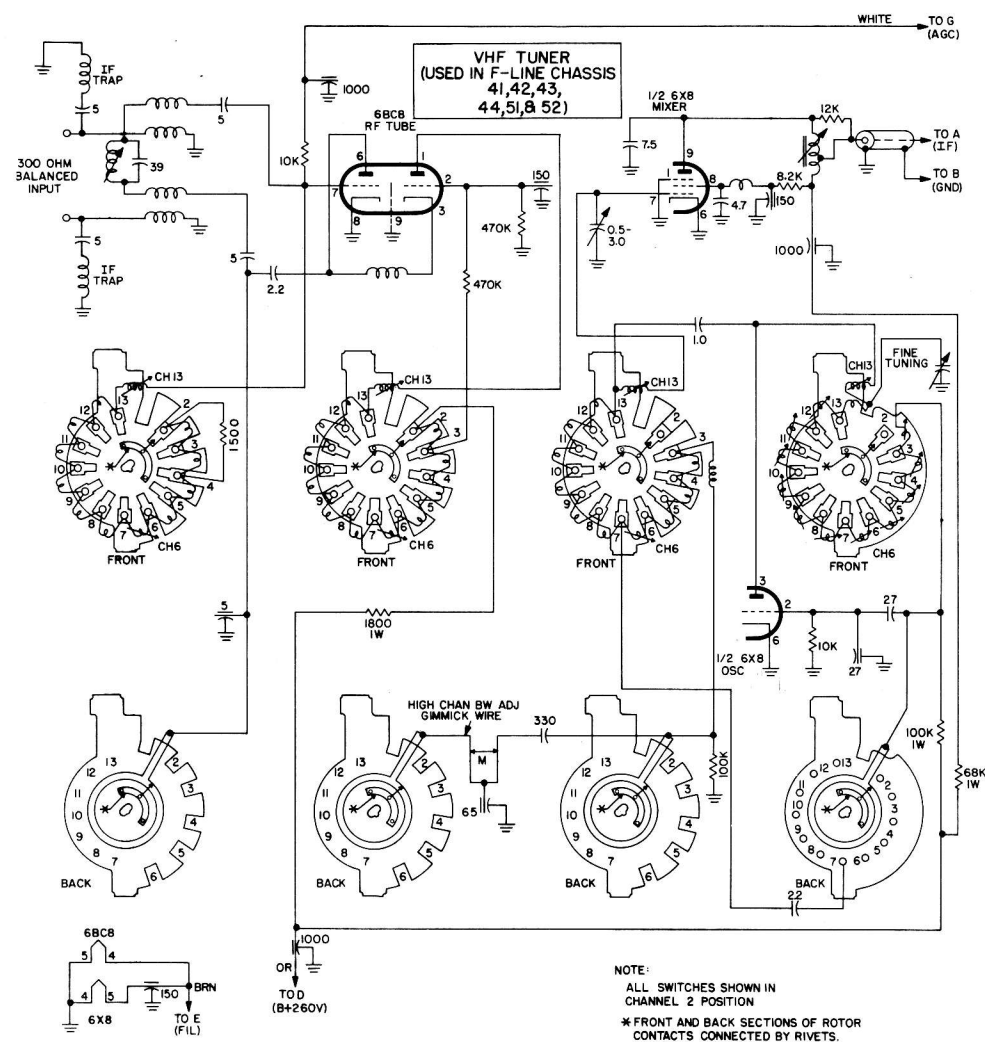
SCHEMATIC FOR TUNERS USED IN PHILCO® 40, U-40, 41, U-41, 40A, U-40A, 41A, U-41A CHASSIS

1. ALL RESISTANCE VALUES ARE IN OHMS $\pm 10\%$, $\frac{1}{2}$ WATT, UNLESS OTHERWISE INDICATED.
2. ALL CAPACITANCE VALUES OF 1.0 AND ABOVE ARE IN MMF $\pm 20\%$; AND ALL VALUES BELOW 1.0 ARE IN MF $\pm 20\%$, UNLESS OTHERWISE INDICATED.
3. SEE REVERSE SIDE FOR RECEIVER SCHEMATIC.

PRELIMINARY SCHEMATIC



FOR SERVICE TECHNICIANS ONLY

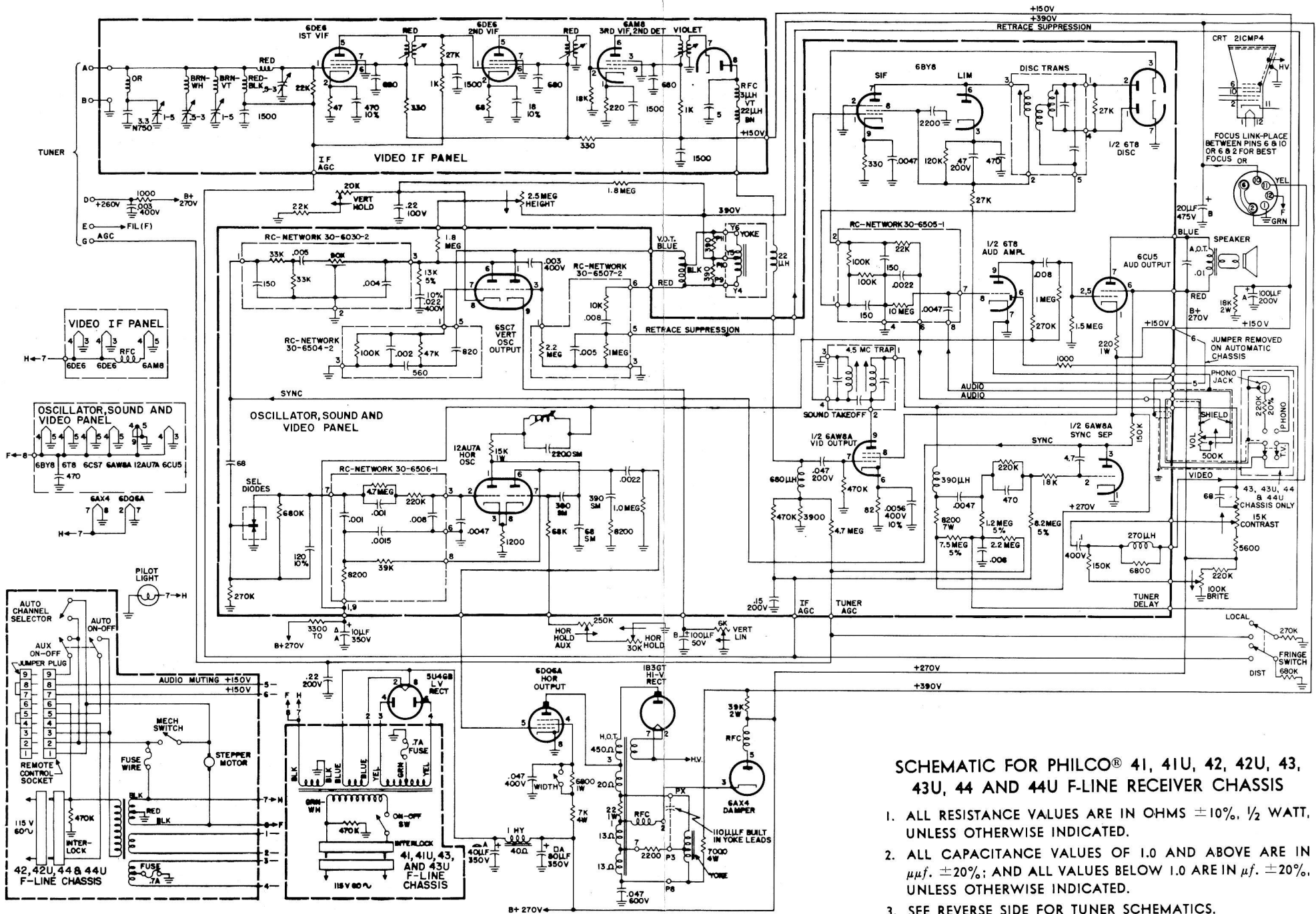


SCHEMATIC FOR TUNERS USED IN PHILCO® 41, 41U, 42, 42U, 43, 43U, 44, 44U, 51, 51U, 52 AND 52U F-LINE CHASSIS

1. ALL RESISTANCE VALUES ARE IN OHMS $\pm 10\%$, 1/2 WATT, UNLESS OTHERWISE INDICATED.
2. ALL CAPACITANCE VALUES OF 1.0 AND ABOVE ARE IN $\mu\text{f.}$ $\pm 20\%$; AND ALL VALUES BELOW 1.0 ARE IN $\mu\text{f.}$ $\pm 20\%$, UNLESS OTHERWISE INDICATED.
3. SEE REVERSE SIDE FOR RECEIVER SCHEMATIC.

PRELIMINARY SCHEMATIC

FOR SERVICE TECHNICIANS ONLY



SCHEMATIC FOR PHILCO® 41, 41U, 42, 42U, 43, 43U, 44 AND 44U F-LINE RECEIVER CHASSIS

1. ALL RESISTANCE VALUES ARE IN OHMS $\pm 10\%$, $\frac{1}{2}$ WATT, UNLESS OTHERWISE INDICATED.
2. ALL CAPACITANCE VALUES OF 1.0 AND ABOVE ARE IN $\mu\text{f.}$ $\pm 20\%$; AND ALL VALUES BELOW 1.0 ARE IN $\mu\text{f.}$ $\pm 20\%$, UNLESS OTHERWISE INDICATED.
3. SEE REVERSE SIDE FOR TUNER SCHEMATICS.