

PHILCO TRANSITONE SERVICE BROADCAST

MARCH 1, 1933

Model 6, B-6, 9 and 12 Improvements

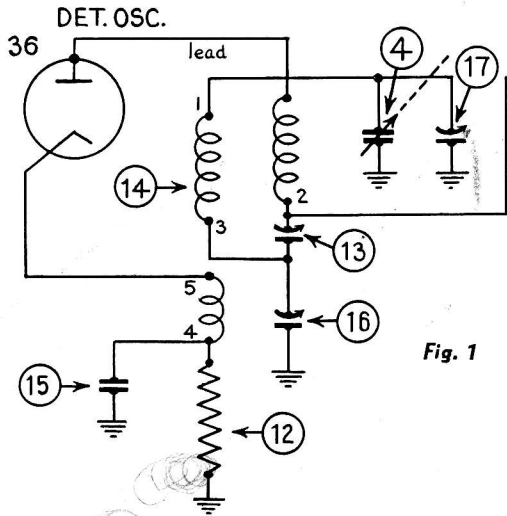


Fig. 1

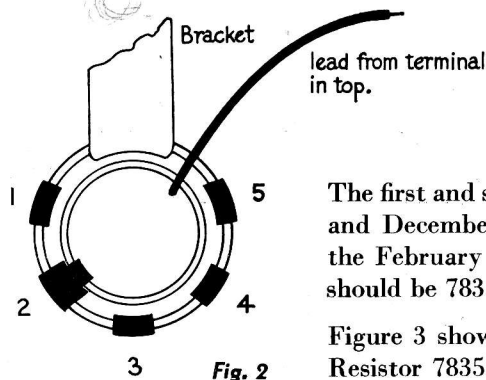


Fig. 2

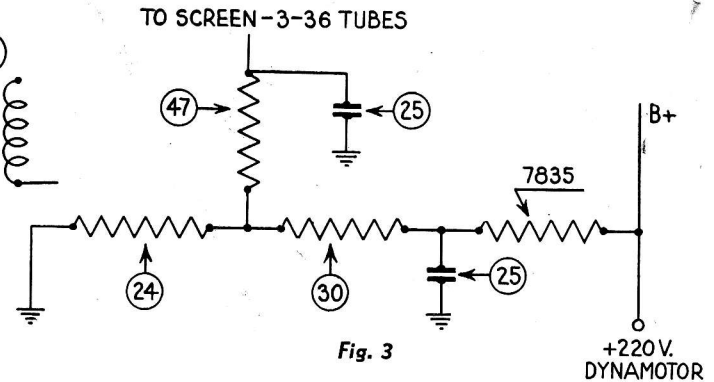


Fig. 3

Figures 1 and 2 show the schematic and terminal arrangements of the new oscillator coil in the Models 6, B-6, 9 and 12. Practically the same changes have been made in the 6 that were made in the 9. The dial becomes 8255 on the 6, and 8257 on the B-6. Padders 04000-D and 04000-A become 04000-X and 04000-J respectively. The 6000 ohm resistor 7352 becomes 8267 (13,000 ohms). The antenna transformer is now 06914; the R. F. Transformer 06915; the oscillator 06916 and the first I. F. Transformer 06932.

The first and second I. F. part numbers were transposed on the parts list in the November and December SERVICE BROADCAST. Number 05901 is first and 05970 is second. In the February SERVICE BROADCAST under Model 9 changes, the 8000 ohm resistor 8255 should be 7835.

Figure 3 shows the circuit arrangement of the screen voltage divider and filter circuit. Resistor 7835 has been added to the Models 9 and 12 only.

MODEL 12-122

The original Model 12 was similar to the Model 8 and was properly known as Model 12—Code 121. The present Model 12 is the Model 12—Code 122, and is similar to the Model 9 except that it is for 12 volt operation. The tubes, the circuit and the base arrangement are the same. Figure 4 shows the wiring of the tube heater circuits. Since 6.3 volt tubes are used, a series multiple connection must be used to operate them from a 12 volt battery.

The shunt resistor on the oscillator tube is Part No. 33-3002, 21 ohms. The pilot light resistor is Part No. 7155, 30 ohms. The speaker is the A-9 and is equipped with a 12 volt field. The Model EE dynamotor is used, supplying 40 milliamperes at 220 volts.

The Model 12 has been designed especially for bus and boat installations where 12 volt battery systems are used. It gives the same matchless performance as the Model 9 and is priced the same, \$89.50.

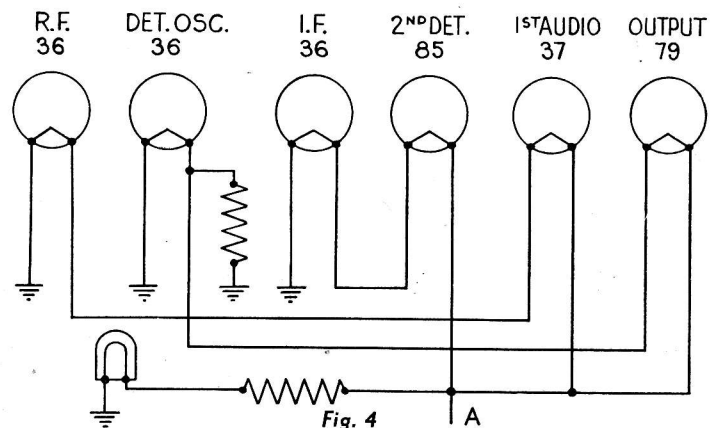


Fig. 4

AUBURNS NOW ANTENNA EQUIPPED

Since the antenna list (February SERVICE BROADCAST) was compiled, Auburn is equipping all closed models with a top antenna. The Reo Royale N-2 for 1933 is equipped with an antenna, while the Flying Cloud Model 52 is equipped with antenna on special order only. The open and convertible models, both Auburn and Reo, will be supplied with antenna on order.

AVOID THESE MISTAKES

1. Practically every service man knows that small motors and generators, such as our Dynamotor, must be mounted with the shaft in a horizontal position. In spite of this, some have been installed with the shafts in vertical and other positions. There are no thrust bearings on these small units. Installing the dynamotor with the shaft in any but the horizontal position is inviting trouble. Be on the safe side. Follow instructions. The dynamotor shaft must be in a horizontal position.
2. There have been a few complaints regarding Receivers not operating, which, when investigated were found to be due to the dynamotor battery connections being reversed. The label pasted on the dynamotor base clearly shows the polarity of the "A" terminals. If in doubt about the polarity of the battery, test with a voltmeter. The ground connection on the terminal panel must be connected to the terminal that corresponds with the polarity of the grounded side of the battery. The battery lead must be connected to the terminal that corresponds with the live (non-grounded) side of the battery. If connections are reversed at the battery, the shield lead will short-circuit the battery. If connections are reversed at the dynamotor, the polarity of the output (high voltage) side will be reversed. "B+" becomes "B—" and vice-versa and the Receiver will not operate.

Philco Transitone Parts Price List

Part No.	Description	List Price	Part No.	Description	List Price
2515	Output Transf.	\$1.50	4059	Cond. (.002 mfd.)	\$.30
2565	Output Transf.	1.40	4237	Resistor (50,000)	.45
2589	Output Transf.	1.75	4372A	Tuning Cond.	5.50
2598	Output Transf.	1.25	4401A	Ant. Transf.	.80
2706	Output Transf.	2.00	4401B	R. F. Transf.	.60
2710	Spkr. Housing	1.00	4407	Resis. (Wire wound)	.45
3082	Cond. (.00025 mfd.)	.20	4408	Resis. (Wire wound)	.30
3164	Fibre Wrench	.15	4409	Resis. (1,000,000)	.25
3241	Audio Transf.	2.75	4410	Resis. (250,000)	.25
3256-A	R. F. Choke	.25	4411	Resis. (100,000)	.25
3615C	Cond. (.05 mfd. with 250)	.30	4412	Resis. (10,000)	.25
3615N	Cond. (.05 mfd.)	.20	4414	Resis. (1,000,000)	.25
3615P	Cond. (.05 mfd. with 250)	.30	4415	Tube Socket	.16
3615AE	Cond. (.05 mfd.)	.20	4416	Tube Socket	.20
3615AG	Cond. (.05 mfd.)	.20	4418	Cond. (2.0 mfd.)	1.50
3615AK	Cond. (.05 mfd.)	.20	4419	Cond. (1.0 mfd.)	.40
3615AN	Cond. (.05 mfd.)	.25	4420	Cond. (1.0 mfd.)	.60
3615AT	Cond. (.05 mfd.)	.20	4441A	Steer. Col. Cont.	11.00
3615AY	Cond. (.05 mfd.)	.20	4443	Bezel Plate	.25
3615AZ	Cond. (.05 mfd.)	.20	4461	Dial	.35
3656	Resis. (25,000)	.25	4462	Switch	.60
3767	Resis. (100,000)	.25	4463	Vol. Cont. (M-3)	1.25
3774	Cond. (.00005)	.25	4465	Batt. Box (large)	3.25
3775B	R. F. Transf.	.70	4485	Audio Choke	1.50
3793D	Cond. (.015 mfd.)	.16	4487	Cond. (.25 mfd.)	.40
3903Y	Cond. (.01 mfd.)	.16	4505	Flex. Shaft (18" M-3)	1.30

Part No.	Description	List Price	Part No.	Description	List Price
4507	Flex. Shaft (12" M-3)	\$1.00	7525	Vol. Cont. (M-6-9)	\$1.50
4508	Flex. Shaft (27" M-3)	1.70	7535	Auto Transf.	2.25
4509	Flex. Shaft (36" M-3)	2.10	7552	Audio Transf.	2.25
4510	Flex. Shaft (45" M-3)	2.50	7652	Input Transf.	1.60
4516	Resis. (25,000)	.25	7741	Dial (B-6)	.20
4518	Resis. (50,000)	.25	7774	Cond. (20 mfd.)	.75
4520	Cond. (.0007 mfd.)	.20	7775	Resis. (2,500)	.20
4522	Cond.	1.00	7835	Resis. (8,000)	.15
4531	Spk. Plug Resis.	.50	8255	Dial (M-6-9)	.20
4539	Batt. Plug (4 hole)	.40	8267	Resis. (13,000)	.20
4540	Fuse (1 amp.)	.05	8291	Tun. Cont. Shaft 144"	5.00
4546	Dist. Resis.	.50	8292	Vol. Cont. Shaft 144"	5.00
4567	Pilot Lamp	.18	02688	Field Coil Assembly	2.00
4593	Fuse Holder	.30	02794	Field & Frame	4.00
4705	Switch	1.00	02795	Field Assembly	2.25
4851	Resis.	.50	02823	Speaker Cone	.45
4883	Flex. Shaft (M-3)	3.50	02984	Speaker Extension	.75
4885	Plug Cap.	.08	03334	Knob (Complete)	.05
4989U	Cond.	.20	04000A	Compensator	.12
4989Y	Cond.	.20	04000D	Compensator	.10
5110	Resis. (7)	.15	04000J	Compensator	.20
5215	Cond. (.001 mfd.)	.20	04000R	Compensator	.35
5462	Switch	.40	04000S	Compensator	.25
5676	Fuse (10 Amp.)	.03	04000X	Compensator	.16
5838	Resis. (8,000)	.25	04308	Tun. Cond.	5.25
5863	Cond. (.0007 mfd.)	.18	04342	R. F. Choke	1.00
5886	Cond. (.00125 mfd.)	.25	04343	Cont. Unit (6, 7, 8, 9, 12)	5.75
5930	Filter Choke	1.40	04345	Top Cover	.35
6030	Cont. Cover	.60	04348	Ant. Transf.	.75
6043	Dial	.25	04352	I. F. Transf.	1.10
6058	Housing (M-7)	.65	04353	I. F. Transf.	1.10
6083	Batt. Box (small)	2.85	04354	Cond.	1.10
6091	Key (M-6-7-8-9-12)	.15	04356	Osc. Coil	1.25
6096	Resis. (5000)	.20	04416	Batt. Cable (M-7)	2.25
6097	Resis. (500,000)	.20	04508	Osc. Coil	1.00
6098	Resis. (50,000)	.20	04509	Interstage Coil	.50
6099	Resis. (100,000)	.20	04959	Cond.	.75
6107	Resis. (225)	.16	05366	Tone Cont.	.50
6109	Vol. Cont. (M-7)	1.50	05388	EA Dynamotor	21.95
6122	Receiver Studs	.03	05389	EB Dynamotor	21.95
6128	Vol. Cont. Shaft 32"	1.50	05419D	Batt. Cable (M-9)	3.50
6129	Tun. Cont. Shaft 32"	1.50	05427	Term. Panel Assem. EA	.22
6298	Vol. Cont. Shaft 48"	2.00	05428	Term. Panel Assem. EB	.30
6299	Tun. Cont. Shaft 48"	2.00	05622	Cond. (M-8)	1.00
6351	Vol. Cont. Shaft 18"	1.00	05646	I. F. Transf.	1.25
6352	Tun. Cont. Shaft 18"	1.00	05691	Cond.	1.50
6355	Vol. Cont. Shaft 120"	4.00	05723	R. F. Choke	.15
6356	Tun. Cont. Shaft 120"	4.00	05724	Filter Cond.	1.25
6359	Cond. (.06 mfd.)	.40	05901	I. F. Transf.	.75
6443	Cond. (.0007 mfd.)	.16	05902	R. F. Transf.	.50
6511	Resis. (2.7)	.16	05903	Ant. Transf.	.45
6582	Input Transf.	2.00	05910	Interstage Shield	.05
6602	Filter Choke (M-8)	1.25	05970	I. F. Transformer	.80
6649	Resis. (20,000)	.25	05975	Det. Osc. Coil	.65
6650	Resis. (20,000)	.25	06006	Batt. Cable (M-6)	2.50
6655	Dynamotor Housing	1.00	06043	Term. Panel (EB)	.30
6658	Filter Choke	1.25	06084	ED Dynamotor	21.95
6853	Cond. (.002 mfd.)	.30	06088	Cond. (.5 mfd.; .25 mfd.)	1.25
6977	Resis. (500)	.20	06091	Cond. (.05 mfd.; .01 mfd.)	.35
7071	Tun. Cont. Shaft 132"	4.50	06256	Batt. Cable (B-6)	3.25
7072	Vol. Cont. Shaft 132"	4.50	06374	Ant. Transf.	.50
7096	Relay	.90	06914	Ant. Transf.	.60
7122	Batt. Plug (6 hole)	.35	06915	Interstage Transf.	.55
7123	Plug Cap.	.10	06916	Osc. Coil	.65
7155	Resis. (30)	.20	06931	Batt. Cable (Packard)	3.00
7227	Fuse (16 amp.)	.10	06932	I. F. Transf.	.80
7289	Tun. Cont. Shaft 72"	2.50	095	Philco Mod. Osc.	47.50
7290	Vol. Cont. Shaft 72"	2.50	L-1160A	Batt. Cable	1.00
7322	Vol. Cont.	1.50	L-1163A	Spkr. Cable & Plug	.50
7352	Resis. (6000)	.25	L-1164	Battery Cable	1.00
7440	Cond. (10 mfd.)	.75	L-1188	Spkr. Cable (Model A)	.60
7443	Tun. Cont. Shaft 84"	2.75	L-1386	Shielded Loom 30"	.40
7444	Vol. Cont. Shaft 84"	2.75	L-1387	Shielded Loom 18"	.25

TUBE PRICES

Philco recently announced a change in tube prices from the December 1932 list. The prices in effect now on the tubes used in the various Philco Transitone models are:

01A	\$.80	38	\$1.60
24	1.40	41	1.60
71A	.95	79	2.60
36	1.80	85	1.60
37	1.40		

Your Philco Transitone distributor will gladly furnish you with the new complete lists. Be sure to ask for them and remember—Philco High Efficiency Tubes make any Receiver work better.

