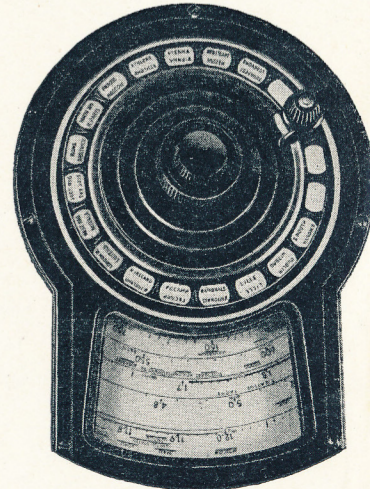


"Empire" TWENTY-TWO PEOPLE'S SETS

SUPER HIGH-FIDELITY AUTOMATIC RADIOGRAM

Here is unquestionably the finest radiogram in the world, a standard production of Philco, built to the most exacting engineering standards, and housed in a choice of three luxurious cabinets. "The Empire Twenty-Two" Super High-Fidelity All-Wave Radiogram with automatic record-changing mechanism offers an entirely new standard of sound reproduction. A glance at the remarkable specification of its twin chassis goes some way towards explaining its unique tonal range and quality. Automatic telephone dial tuning makes its bow to you. It is simple and precise. Three speakers transmit pure tone throughout a very complete tonal range, and four acoustic clarifiers absorb boom. Continuously variable selectivity gives either high fidelity or mellow quality coupled with knife-edge selectivity. Continuously variable bass control governs bass register from normal to full organ tone, while continuously variable contrast expansion restores original vitality to music, removing entirely needless scratch and other extraneous noises. The "Buckingham" cabinet illustrated is executed in selected American but walnut with pilasters of solid walnut. Folding doors hinged to revolving corner posts allow the doors to swing back and cling to the sides of the cabinet (as illustrated). The massive lid is self-opening with press button control operated (as illustrated). The motor board is automatically flooded as the lid opens. Not only is a choice offered of two additional cabinets, the "Balmoral" and "WindSOR", in varying modern styles, but special cabinets can be designed to harmonise with your own decoration scheme or built to period or modern designs submitted. Ask for special illustrated booklet.



Automatic Tuning

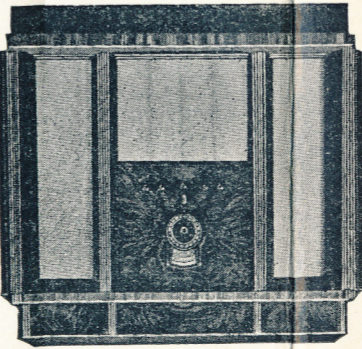
The latest in radio is "Philco's Automatic Tuning" by station call letters placed just like the letters on an automatic telephone dial. Turn the dial just once, and instantly you are listening to the station of your choice, tuned with electrical precision. Fourteen favourite British and Continental stations of your own selection are shown on the dial. You can very simply favour the station of your choice. The dial is a complete range of stations which has never before been entirely controlled. When the magnetic tuning device is switched on all the dial finger holes are illuminated. The "Glowing-beam", a brilliant narrow stream of light, shows you all the time what tuning range you're on and exactly where you are on it. Range: 11.5-18.2 mcs. (26.1-16.4 metres). Short: 4.5-11.6 mcs. (66.6-25.8 metres). Intermediate: 1.5-4.7 mcs. (200-63.9 metres). Long: 145-350 kcs. (2028.9-857.1 metres). Medium: 520-1600 kcs. (576.5-187.5 metres). High-frequency speaker, ensuring reproduction of entire frequency range as required. 14-in. Cathedral speaker with two additional high-frequency speakers, ensuring reproduction of entire frequency range as required. Continuous variable contrast expansion. Continuous variable bass control. Continuous variable variable bass compensation. Magnetic tuning on all five wavebands. Automatic amplified bass compensation. Wide-angle sound diffusion. Two separate power supplies. Switch for extension speakers. Two-speed vernier tuning.

22 VALVES · 3 SPEAKERS · TWIN CHASSIS · HUGE DIAL · 15 WATT OUTPUT

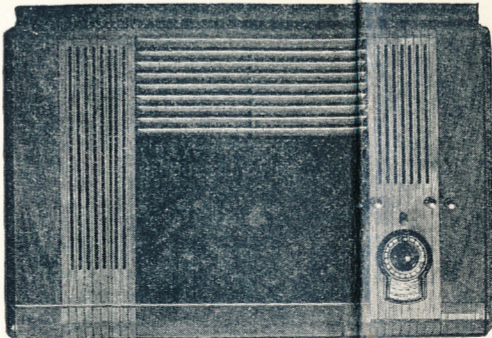
FROM 120 GUINEAS
MODEL A228
A.C. MAINS

SPECIAL FEATURES

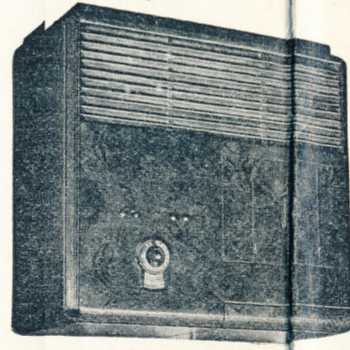
- Four acoustic clarifiers to absorb boom and interfering echoes.
- Dual amplified delayed A.V.C.
- Automatic amplified bass compensation.
- Wide-angle sound diffusion.
- Two separate power supplies.
- Switch for extension speakers.
- Two-speed vernier tuning.



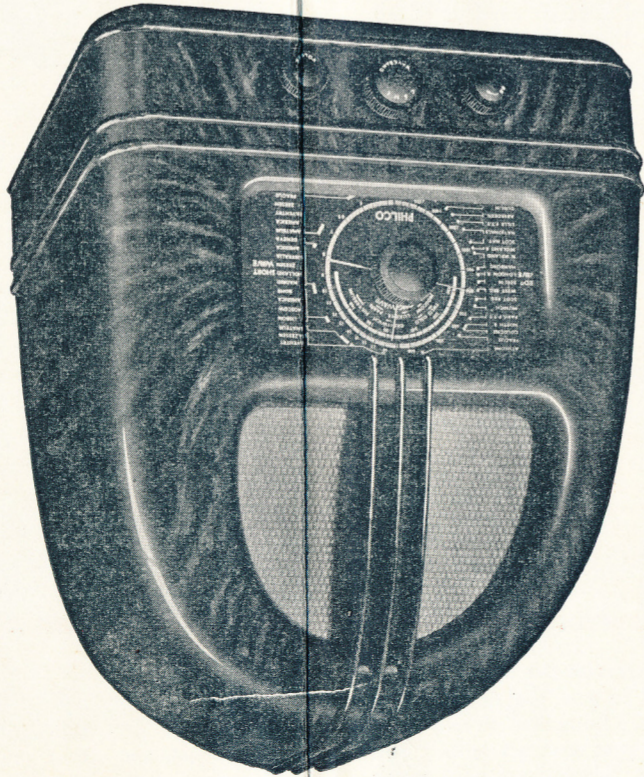
The "BUCKINGHAM"



The "WINDSOR"



The "BALMORAL"



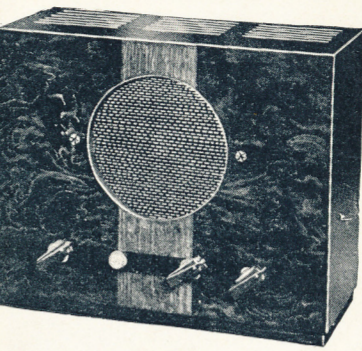
ALL-WAVE MODELS

This model includes every essential of an all-wave set. Wide frequency ranges covering short, medium and long wavebands. 5 Philco High-Efficiency Valves, superheterodyne circuit, full automatic volume control, knife-edge selectivity and slow-motion tuning. Built-in retractable speaker for Philco All-Wave base Radiogram, or for ordinary aerial; extension automatic volume control, knife-edge selectivity and slow-motion tuning, built-in retractable speaker and long wavebands. 3 watts indistorted output and large fully energised moving-coil speaker. Separately mounted on-off switch which permits any setting of the volume control to be maintained. Power consumption only 60 watts. Full vision illuminated dial, calibrated in kilocycles and megacycles, with station pointers to match the waveband colours. Dial is black and gold when unlighted and when lighted shows a three-colour indication of the three wavebands, red, green and gold, with station pointers to match the waveband colours. Range in three wavebands: Long: 320-1500 kcs. (937.5-2000 metres) Medium: 1700-550 kcs. (176.4-545.4 metres) Short: 18.5-7 mcs. (16.6-52.6 metres) Also available as Model V537 for A.C./D.C. Mains £10:2:0 £9:17:6

PHILCOPHONE

Just the thing for your Home

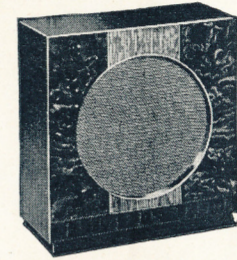
No more wasted steps; no more irritating waits; no more straining to catch words on an old-fashioned house-telephone! Here is the Philcophone... far more than a house-telephone! The Philcophone gives you instant and private two-way communication between a master control unit and one or more remote units in other parts of the building. The microphone-loudspeaker picks up your normal speaking voice wherever you may be in the room, and relays it at whatever strength you choose. The Philcophone is built of Philco standard parts. It operates on either A.C. or D.C. mains. The master control unit has a handsome walnut cabinet, with a knob to control the volume. A red light shows when the system is in operation. The remote unit can also be used as an extension loudspeaker with any Philco set, enabling you to enjoy radio throughout your house without moving your set.



THE MASTER CONTROL
7½ in. high, 11½ in. wide, 5½ in. deep

The Master Control 12^G N_S
and one Remote Unit

EXTRA REMOTE UNITS each 2 GNS.

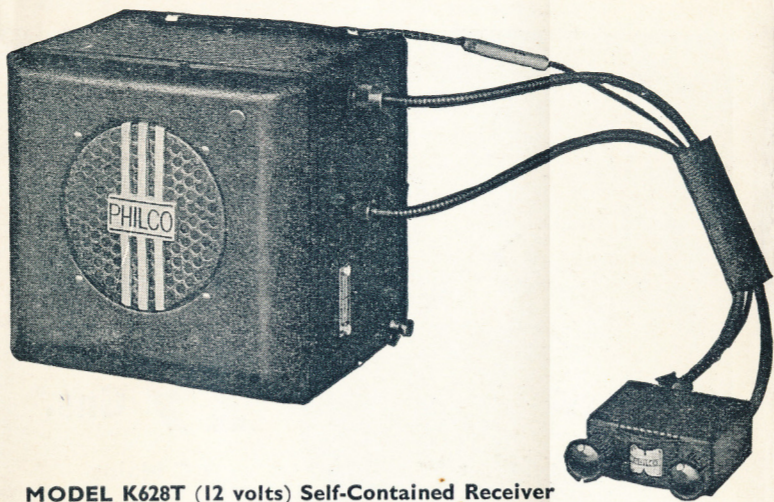


THE REMOTE UNIT or Extension Speaker
6½ in. high, 7½ in. wide, 3½ in. deep

TALK-DON'T WALK!

Prices, Descriptions and Illustrations of the products in this Catalogue are correct at the time of going to press, but all are subject to variation without notice.

CAR RADIO



MODEL K628T (12 volts) Self-Contained Receiver
Model K628S (6 volts)

MODEL K628 is the latest and most successful receiver specially designed and built by the world's largest manufacturers of car radio with British material and labour for British broadcasting conditions. The finest sales and service organisation in Great Britain is offered owners of Philco Car Radio by Messrs. Delco-Remy and Hyatt, Ltd., 111 Grosvenor Road, London, S.W.1, sole national distributors. The specification includes a dual-wave six-valve chassis specially designed to withstand vibration and extremes of heat, a unique illuminated control head, operated with only two knobs, for unobtrusive fitment to the lip of the instrument panel, an aerial compensator ensuring that the signal from any type of aerial is increased to greatest capacity, and the most simple method of set mounting yet designed allowing the receiver to be detached from its mounting without removing the two bolts. Consumption on 12-volts is only 2.3 amps (much less than one headlamp). Other features include improved automatic volume control, a new type long life vibrator, improved chassis design allowing valves or vibrator to be changed without removing set from its mounting. This new receiver can be fitted to any make of car and is especially suitable owing to its shape and small size to cars where room is at a premium.

ONLY 15 GNS.

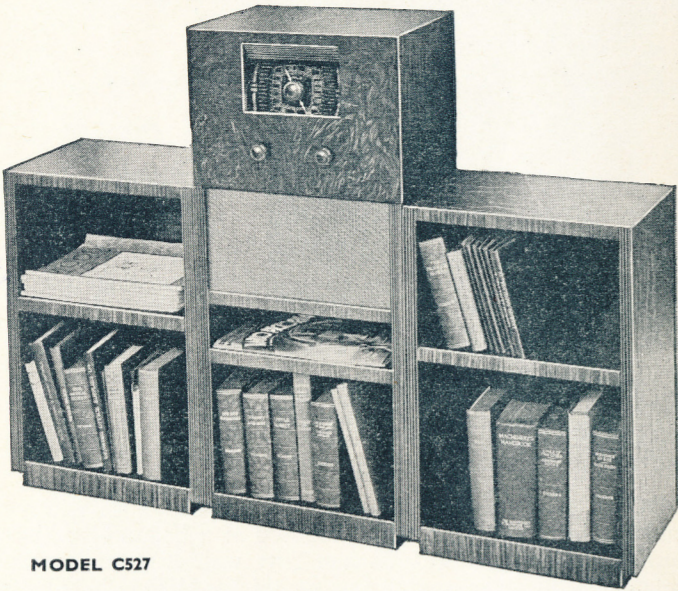
Separate Speaker Models L628T (12 volts) and L628S (6 volts) with miniature speaker for limousine cars
PRICE 17 GUINEAS

Model L628T.C. (12 volts) with oversize speaker for yachts, power-boats, motor coaches and aeroplanes.

Note.—The receiver for yacht and power-boat installations covers the trawler telephone waveband, thus giving reception of shore and ship radio telephone messages and weather forecasts.

BOOKCASE CONCERT GRAND

New Radio Bookcase



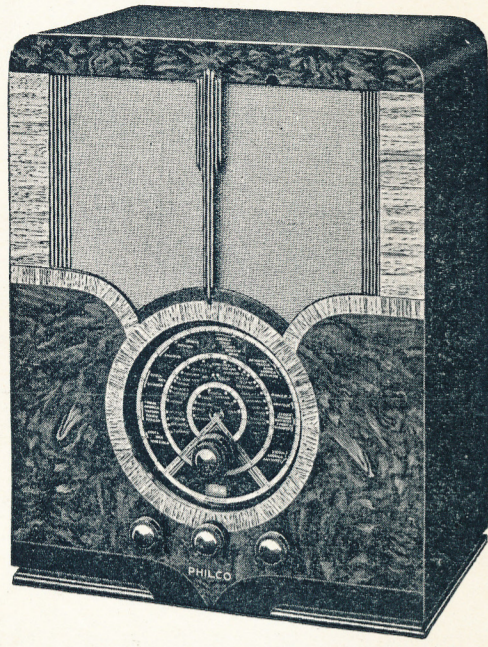
MODEL C527

A radio and bookcase in one handsome piece of modern furniture! This is Philco's new Bookcase concert grand. It is veneered in highly-figured walnut, with fluted pilasters. Its artistic simplicity and compactness making an instant appeal. The centre unit which contains the radio set is 32½ ins. high by 15 ins. wide by 10½ ins. deep, and is provided with a space for books and a special compartment for your "Radio Times," and for magazines and newspapers as you wish. The extension bookcase units each measure 22½ ins. high by 15 ins. wide by 10½ ins. deep. In the illustration the extension bookcases are placed one on each side of the centre unit, but both may be on one side, left or right, to suit the furnishing of your room. Any number of extension bookcases may be added. The radio set is a 5-valve de luxe superhet model for A.C. mains, with full automatic volume control, exceptional selectivity, enormous power, and pure tone; the full vision illuminated tuning dial is black and gold when unlighted, and red and green when lighted, and it is calibrated in kilocycles with station names. Extension speaker sockets are provided. The wing bookcase units also make very desirable stands for any baby grand model.

BOOKCASE CONCERT GRAND CENTRE UNIT
£10:19:6

EXTENSION BOOKCASES each 2 GNS.

SPECIAL De Luxe MODELS



MODEL A53 is a five-valve all-wave superhet of very attractive appearance and high performance. It has many exclusive features including full automatic volume control, continuously variable tone control, and full vision illuminated dial calibrated in kilocycles and with names of short, medium and long-wave stations.

Available as Model U53 for A.C./D.C. Mains at same price. 14 Gns. A.C. Mains

MODEL A52 is a five-valve superhet operating on long and medium wave-lengths. It is housed in the same luxurious cabinet as the A53 and has full automatic volume control, 9 kilocycles selectivity, beautiful tone and great power. The full vision illuminated dial is calibrated in kilocycles and with station names. 12 Gns. A.C. Mains

12 Gns. A.C. Mains

£8:12:0

£8:12:0

£8:5:0

£7

£6

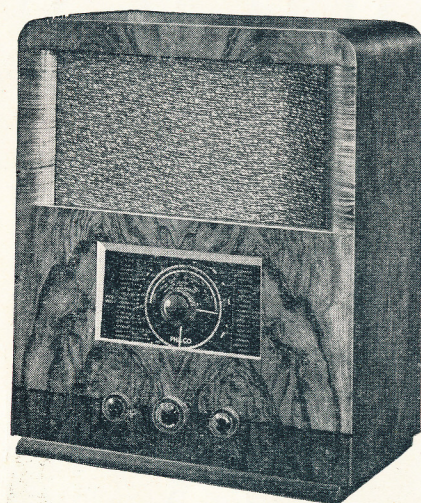
Offers homes without mains a truly remarkable price. It has 3 Philco High-Efficiency Valves. Large permanent magnet audiotum speaker of latest cobalt alloy, giving full rich tone without distortion. Other features include: band-pass tuning, sharp selectivity—ensuring one station only at a time and all of it—combined on-off switch and volume control, enormous power, simple internal accommodation for batteries, and exceptional light and sound control. Silent background between stations; 5 watts undistorted output and fully energised moving-coil loudspeaker giving perfect reproduction; large full vision dial, marked in metres and kilocycles, and with station names; only 40 watts power consumption. Housed in a beautiful black moulded cabinet. Special features include: 4 Philco High-Efficiency Valves, full automatic volume control; absolute 9 kilocycles selectivity, ensuring only one station at a time and all of it; enormous power; silent background between stations; 5 watts undistorted output and fully energised moving-coil loudspeaker giving perfect reproduction; large full vision dial, marked in metres and kilocycles, and with station names; only 40 watts power consumption. Housed in a beautiful black moulded cabinet. A.C. Mains Model 444. Special features include: 4 Philco High-Efficiency Valves, full automatic volume control; absolute 9 kilocycles selectivity, ensuring only one station at a time and all of it; enormous power; silent background between stations; 5 watts undistorted output and fully energised moving-coil loudspeaker giving perfect reproduction; large full vision dial, marked in metres and kilocycles, and with station names; only 40 watts power consumption. Housed in a beautiful black moulded cabinet. A.C./D.C. Mains Model U427. Has 4 Philco High-Efficiency Valves; full automatic volume control; absolute 9 kilocycles selectivity, ensuring only one station at a time and all of it; enormous power and pure tone with 3 watts undistorted output; illuminated full vision dial, marked in kilocycles and with station names; extension speaker cycles on A.C. Housed in a beautiful walnut-finished moulded cabinet. Supplied for use on 190 to 260 volts, 40 to 100 watts. 5-VALVE DE LUXE SUPERHET MODELS Battery Model P527. Special features include: full automatic volume control, full vision dial marked in station names and kilocycles. The set is housed in a handsome moulded brown bakelite cabinet. A.C. Mains Model A527. Five Philco High-Efficiency Valves, superheterodyne circuit, full automatic volume control, counteracting fading; absolute 9 kilocycles selectivity, ensuring only one station at a time and all of it; enormous power and pure tone; beautiful full vision illuminated tuning dial harmonising with cabinet lighting and unlighted black and gold when unlighted, red and green when lighted. Dial calibrated in kilocycles and with station names. Extension speaker sockets provided. Power consumption approximately 45 watts. Housed in beautiful walnut-finished moulded cabinet. Also available as Model U527 for A.C./D.C. Mains. 8½ Guineas. The People's Set is Philco's response to the radio industry by the Government Committee on Broadcast. ing; the answer to the great demand for an up-to-date, efficient and reliable receiver at a price within the reach of all, and offered on amazingly easy hire purchase terms. The People's Set is, of course, a British-made set, produced at Philco's unique new factory at Farnley, Middlesex, under ideal conditions. It is FULLY GUARANTEED and CARRIES PHILCO'S UNIQUE FREE INSURANCE POLICY. More than 100,000 of these sets are giving brilliant and faithful service in Britain's homes.

STANDARD MODELS

Britain's most successful Radio

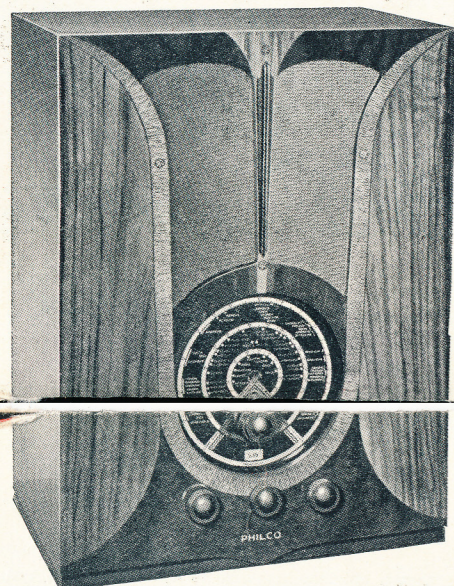
Prices, Descriptions and Illustrations of the products in this Catalogue are correct at the time of going to press, but all are subject to variation without notice.

"Empire FIVE"

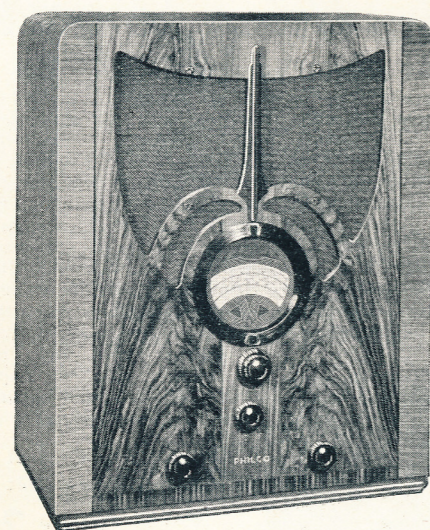


11 Gns.
A.C. Mains

Model C537 represents truly remarkable value as a five-valve all-wave superhet of splendid performance and comprehensive specification. Its features are those to ensure beautiful tone, great selectivity and complete reliability, and they include tone control, full automatic volume control, large fully energised moving-coil speaker and provision for extension speaker and gramophone pick-up. Dial is black and gold when unlighted and when lighted shows a three-colour indication of the three wavebands.



"Empire SIX"



MODEL A637 is unquestionably the outstanding three-wave-band set of the year. It is a very powerful receiver with a tremendous range and great selectivity. It has real superhet sensitivity and a full specification of exclusive features. The cabinet of the "Empire Six" is indeed worthy of this fine new set, being of unusually handsome proportions with highly figured butt walnut with straight-grain inlays.

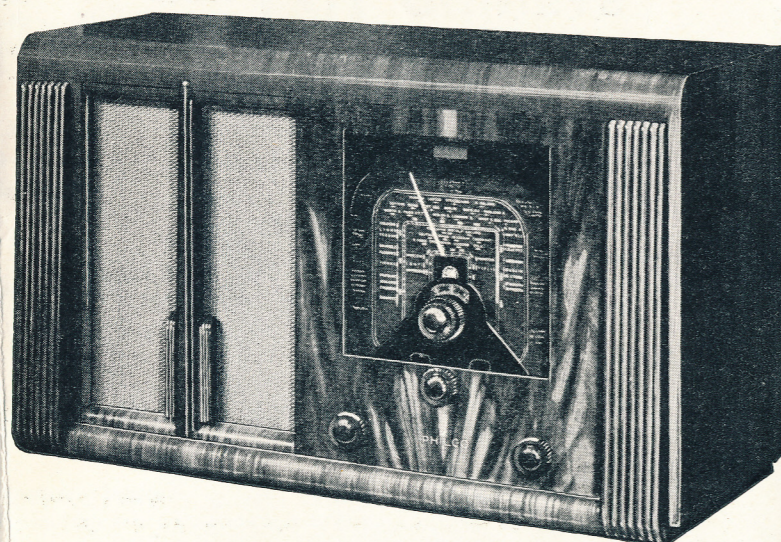
Also as a Concert Grand at 17 Guineas

SPECIAL "Empire Six" FEATURES

- Six High-Efficiency Valves.
- High "Q" coils affording tremendous range.
- Full Automatic Volume Control.
- New short-wave input circuit giving extreme sensitivity.
- Wide vision 270-degree spread-band tuning dial with station names, and frequencies.
- Glowing-beam Waveband Indicator.
- Two-speed ball-bearing tuning drive (ratios 40 to 1 and 8 to 1).
- Built-in aerial transformer for Philco noise-reducing All-wave Aerial.
- Automatic bridge-balanced aerial selector.
- 5-watts undistorted output.
- Bass compensation.
- Continuously variable tone control.
- 8-in. Moving-coil Full Dynamic Speaker.
- Pick-up sockets.
- Extension speaker sockets.
- Voltage range: 200-260 volts.
- A.C., 50-100 cycles.
- Three Wavebands:
 - Long: 320-150 kcs. (937.5-2000 metres).
 - Medium: 1700-550 kcs. (176.4-545.4 metres).
 - Short: 18-5.7 mcgs. (16.6-52.6 metres).

13 Gns. A.C. Mains

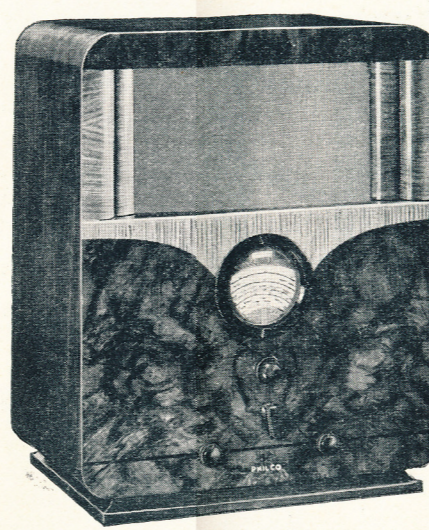
"Empire Six" de Luxe



MODEL A638 must rank among the handsomest of 1938 sets, a de luxe 6-valve all-wave superhet in a distinctive cabinet of highly-figured butt walnut. The specification includes micrometer tuning and Philco's exclusive shadow tuning, a combination that makes short-wave tuning especially simple and accurate, illuminated dial, in three colours to denote the three wavebands, large moving-coil speaker, and sockets for extension speaker and gramophone pick-up. The dial covers the short-wave range from 6 to 18 megacycles, the medium range from 550 to 1600 kilocycles, and the long-wave from 160 to 300 kilocycles. Station names are printed on the dial, and the waveband indicator also shows the frequency of the band indicated.

15 Gns. A.C. Mains

"Empire EIGHT"

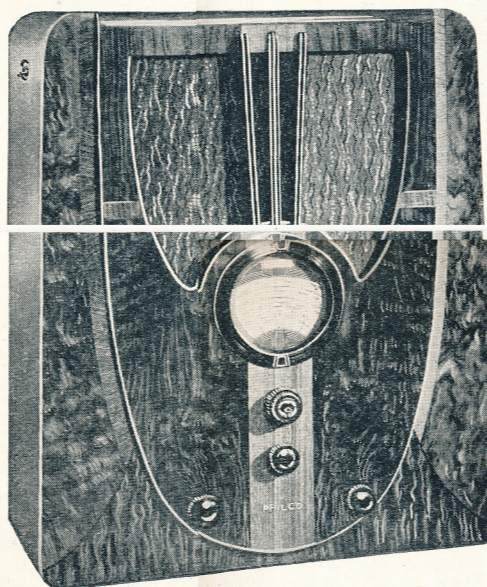


RANGE:
FOUR WAVEBANDS:
Long: 350-150 kcs. (857.1-2000 m.)
Medium: 530-1720 kcs. (566-174.4 m.)
Intermediate: 5.7-11.6 mcs. (52.6-25.8 m.)
Short: 11.5-18.2 mcs. (26.1-16.4 m.)

29 Gns.
A.C. Mains

MODEL A847 "Empire Eight" is acknowledged as the finest eight-valve all-wave superhet available. It affords truly superb reception on long, medium, intermediate and short waves, a depth and richness of tone which will please the most discriminating listener, and an attractively modern cabinet which is characteristic of the world-famous name of Philco. Special features include the new wide vision spread-band dial, with station names, metres and kilocycles calibration, 8 Octal Base Valves, wide tuning range on four wavebands, tone and automatic volume controls, and shadow tuning. In addition this fine set offers you two-speed tuning giving 8 to 1 and 40 to 1 ratios, automatic bass compensation, glowing beam tuning indicator, pick-up jack and sockets and plug switching for extra speaker.

"Empire Special"



19 Gns.
A.C. or D.C. Mains

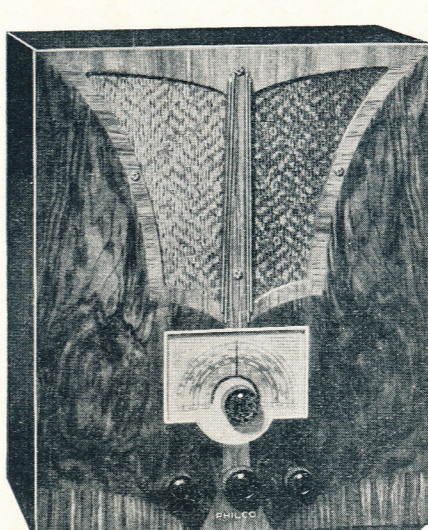
MODEL U647 de luxe "Empire Special" is a powerful new six-valve all-wave superhet of fine performance and particularly handsome appearance. Its host of special features listed below include shadow tuning and the new wide vision spread-band dial, which make even short-wave tuning mere child's play.

THESE UNIQUE FEATURES

- Six-valve All-wave Superhet.
- Full Delayed Automatic Volume Control.
- Shadow Tuning.
- Wide Vision spread-band dial.
- Glowing-beam waveband indicator.
- Slow-motion two-speed tuning control (ratios 40 : 1 and 8 : 1).
- Philco aerial tuning system.
- Philco automatic aerial selector.
- 4-watts undistorted output.
- High Fidelity, incorporating audio-degeneration, neutralising all distortion.
- Continuously variable tone control with top and bass compensation.
- Extension speaker and pick-up sockets.
- A.C./D.C. Mains.
- FOUR WAVEBANDS. RANGE:—**
 - Long: 320-148 kcs. (937.5-2026 m.)
 - Medium: 1750-530 kcs. (171.4-566 m.)
 - Short: 5.75-1.75 mcgs. (52-171.4 m.), 18.2-5.75 mcgs. (16.4-52 m.)

Also as a Concert Grand.
Price: 23 gns.

"BATTERY ALL-WAVERS"



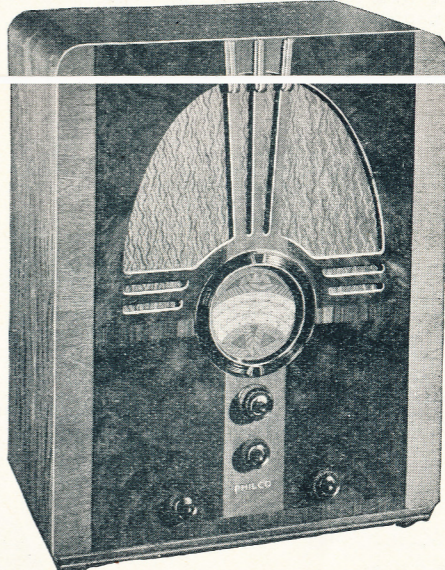
ONLY £8 : 15
(Batteries extra)

MODEL P337. Brings all-wave reception to homes without mains at amazingly low cost. Housed in a beautiful cabinet finished in highly figured matched butt walnut, with straight grain and stripy inlays, this new model has already become a popular favourite.

SPECIAL FEATURES

- Band pass input.
- Waveband indicator.
- Two-speed concentric reduction tuning drive.
- Tone compensation.
- Pentode output.
- Moving Coil Speaker.
- Extension speaker sockets.
- Open-faced dial printed in three colours.
- Extremely economical - 9.5 milliamps H.T., 0.5 amps L.T.
- Low Tension Battery, 2 volts ; High Tension Battery, 150 volts.
- Accommodation in cabinet for H.T. and L.T. batteries.
- Automatic Grid Bias.

RANGES:
Long: 330-140 kcs. (910-2140 metres).
Medium: 1500-550 kcs. (200-545 metres).
Short: 18-5.8 mcs. (6.7-51.5 metres).



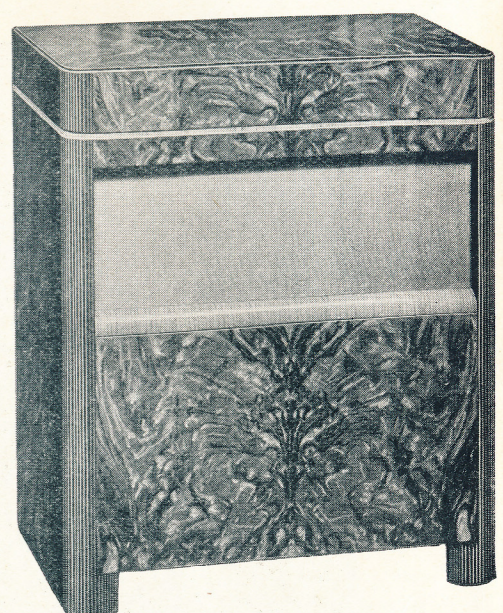
"Empire" Battery Superhet

MODEL 450 emphasises Philco's leadership in all-wave reception for homes without mains. Here is a set of proved reliability that will double your entertainment from the world's programmes, at less than you have to pay for many ordinary sets. Special features include 4 high-efficiency valves, 6 tuned circuits, full automatic volume control, glowing beam wave-band indicator, wide vision 270 degrees tuning dial, calibrated in frequencies and principal station names.

RANGE
Long: 150 Kc. to 360 Kc. (2000 to 833.3 metres).
Medium: 530 Kc. to 1750 Kc. (566 to 171.4 metres).
Short: 5.75 megacycles to 18 megacycles (52 to 16.6 metres).

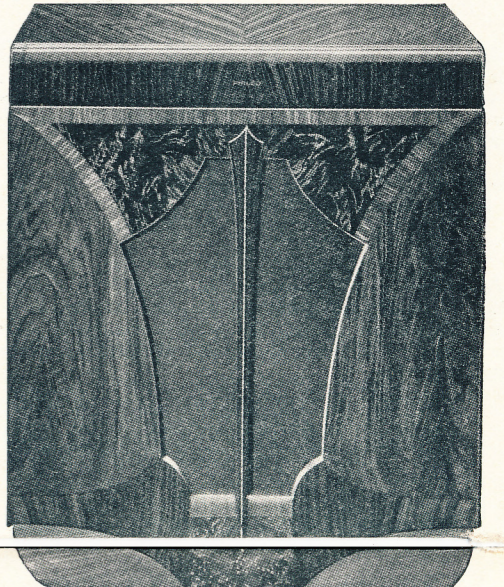
13 Gns.
(Batteries extra)

"ALL-WAVE RADIOGRAMS"



MODEL A537 radiogram offers incomparable value. It incorporates the famous A537 all-wave chassis and the finest quality motor. The cabinet is of handsome proportions and is veneered in halved butt walnut with fluted corner posts. The lid is in quartered walnut.

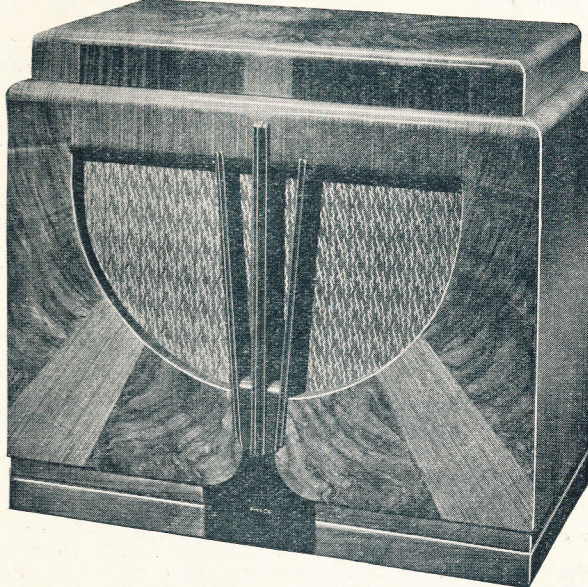
22 Gns. A.C. Mains



23 Gns. A.C. Mains

MODEL A637 "Empire Six" Radiogram represents real quality at a genuinely popular price. This "Empire Six" chassis is housed in a cabinet of massive but elegant design, in richly figured walnut veneers, inlaid with straight-grain and stripy walnut. The lid is finished in halved figured walnut. It has incomparable tone and great power.

De Luxe Automatic Radiogram



MODEL A1847 de luxe All-wave Automatic Radiogram is a powerful instrument with excellent reception on four wavebands and an improved automatic record-changer, furnishing an entire evening's entertainment with a minimum of trouble. It has superb tone on both radio and gramophone, and offers all the unique features of the A847 chassis. The cabinet is massive but of elegant design, with rich figured walnut veneers and rare inlays.

60 Gns. A.C. Mains

MODEL A537 includes every essential of an all-wave superhet. It has 5 Philco high-efficiency valves, full automatic volume control, slow-motion two-speed tuning drive, provision for extension speaker and gramophone pick-up, large fully energised moving-coil speaker giving enormous power, 3 watts undistorted output, and continuously variable tone control. The on-off switch is combined with the tone control permitting any setting of the volume control to be maintained. The full vision illuminated dial is calibrated in kilocycles and has names of short, medium and long-wave stations. It is black and gold unlighted, but when lighted shows a three-colour indication of the three wavebands. The set is housed in a neat and attractive walnut cabinet.

12 Gns. A.C. Mains

Model U537 AC/DC 12½ Gns.

RANGE
Short: 18-5.7 mcs. (16.6-52.6 metres).
Medium: 1700-550 kcs. (176.4-545.4 metres).
Long: 320-150 kcs. (937.5-2000 metres).

As a beautiful Console Model A537 gives everything that could be desired from an all-wave superhet of quality. The five-valve chassis is one of great efficiency and proven merit. It is described above, and its many exclusive features will readily be noted. The cabinet is veneered in halved butt walnut with fluted corner posts, and stands 36½ in. high.

16 Gns. A.C. Mains

UNIQUE FREE INSURANCE POLICY

A FREE Insurance Policy goes with every Philco domestic set, which doubles the security of every Philco owner's investment. Every Philco owner is protected for one year against THEFT, FIRE or ACCIDENT. In the case of theft your set is replaced free; if you suffer fire then the set is repaired or replaced free; and should you be involved in an accident causing temporary or total disablement, payment of hire up to thirteen weeks excess of the first week will be made, and balance of hire purchase price paid in event of death by accident. The conditions under which this unique free policy is issued are simplicity itself. Ask your Philco Dealer for full particulars.

ONLY PHILCO HAS IT!

Philco Valves are backed by the vast resources of the world's largest manufacturers of radio. They are designed to give the finest results with long life, and are guaranteed for 90 days. Reception can only be as good as the valves used. By using Philco valves you start right. But, remember, valves are the part of your receiver which is subjected to the greatest wear. Make a habit of periodically having them tested. By replacing those that are worn you will be sure of maintaining the best results. Philco valves are used in over 10,000,000 receivers and this in itself is proof of their efficiency and value.

"Radio Manufacturers Service" is the organisation sponsored by Philco to ensure that listeners, everywhere, obtain continuous enjoyment from their receivers. Its members are trained in the latest developments in radio and put at your disposal the most up-to-date test equipment. Guaranteed service at fair prices is the basis upon which they work. Whatever your service problem you have the vast resources of Philco to help you through your local member of "R.M.S." When service is your need remember Radio Manufacturers Service.