



**TRANSITONE TH-17** Electric Push-Button Tuning. Built-in Loop Aerial. AC-DC Superheterodyne. 5 Loktal tubes, Automatic Volume Control, Improved Speaker, Full-Vision Dial. Covers Standard American Broadcasts and State Police Calls. Smartly designed brown bakelite cabinet with molded handle. Approved by U.L.  $6\frac{2}{8}$ " H.,  $9\frac{3}{4}$ " W.,  $5\frac{7}{8}$ " D.

**Price**.....

**TRANSITONE TH-16** Built-in Loop Aerial. AC-DC Superheterodyne. 5 Loktal tubes, Automatic Volume Control, Improved Speaker, Full-Vision Dial. Covers Standard American Broadcasts and State Police Calls. Extremely compact brown bakelite cabinet of modern design, with molded carrying handle. Approved by U.L.  $5\frac{3}{8}$ " H.,  $8\frac{3}{8}$ " W.,  $5\frac{7}{8}$ " D.

**Price**.....



## Take It From Room to Room

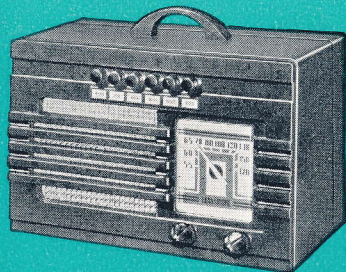
...just plug in anywhere and play!

Built-in Loop Aerial. Needs no aerial or ground wires

A number of the new Transitone Compact models have a *Built-in Loop Aerial*. There are no dangling wires of any kind, no fuss or bother with aerial or ground attachments. Carry the radio from room to room, wherever you wish to use it at any time... plug in to a convenient outlet and play! And, because there are no outside wires to pick up noises, you get purer, clearer, finer tone. The *Portable Electric Radio!*



**TP-21** Built-in Loop Aerial, no outside wires of any kind, just plug in anywhere and play. Brown and amber plastic cabinet. Electric Push-Button Tuning; 6 buttons. Gets Standard American Broadcasts, City and State Police. AC-DC Superheterodyne. 5 Loktal tubes. Improved Speaker. Automatic Volume Control.



**TH-17** Brown bakelite cabinet. Illuminated dial. Electric Push-Button Tuning; 6 buttons. Built-in Loop Aerial, no outside wires of any kind. Just plug in anywhere and play. Gets Standard American Broadcasts and State Police. AC-DC Superheterodyne. 5 Loktal tubes, all working... no ballast tube. Improved Speaker. Automatic Volume Control.



**TH-15** Inlaid Walnut cabinet. Built-in Loop Aerial, no outside wires of any kind. Just plug in anywhere and play. Electric Push-Button Tuning; 6 buttons. Gets Standard American Broadcasts. AC-DC Superheterodyne. 5 Loktal tubes, all working... no ballast tube. Improved Speaker. Automatic Volume Control.

## Ask for folders describing these OTHER PHILCO PRODUCTS!

- ★ **HOME RADIOS** for every purse and preference. Built to receive Television sound. With Built-in *Super Aerial System*—no installation, no wires on roof or around your room—just plug in anywhere and play! Biggest values in history.
- ★ **RADIO-PHONOGRAPHS.** Amazing values, from magnificent consoles to compact, low-cost table models. Sensational New Record-Changer. New circuits specially built for finer tone.
- ★ **PORTABLE RADIOS** that play anywhere without aerial, ground or "house current." Several models—superb tone, extra long life batteries and true Philco performance.
- ★ **FARM RADIOS.** Greatest *economy*, lowest battery drain ever offered. Better performance, convenience and beauty at new low prices.
- ★ **AUTO RADIOS.** Five new models to fit ANY car. Finer performance, new convenience and greater value, at every price.
- ★ **PHILCO TUBES** improve the performance of any radio. All types to fit any make or model.
- ★ **CONSERVADOR REFRIGERATORS** with exclusive shelf-lined Inner Door that saves *space, time, effort, money!* You really use all the space you buy. Sold and guaranteed by Philco.
- ★ **YORK COOL-WAVE AIR CONDITIONERS.** Hot weather comfort for home and office... now as low in cost and as easy to install as a good radio. Built by York, sold and guaranteed by Philco.

# TRANSITONE

## Compact Radios

SOLD AND GUARANTEED BY

# PHILCO

YOURS  
AS LOW  
AS

**\$9.95**

NEW LOKTAL TUBES

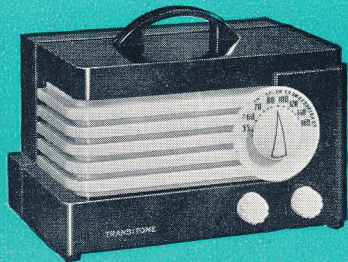
QUALITY ENGINEERING

UNDERWRITERS' APPROVAL

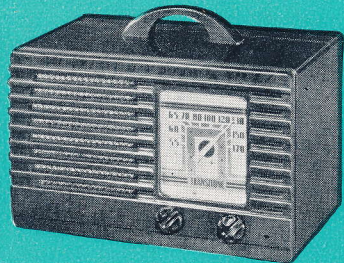
# TRANSITONE

Sold and Guaranteed by

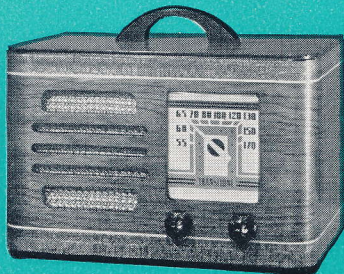
# PHILCO



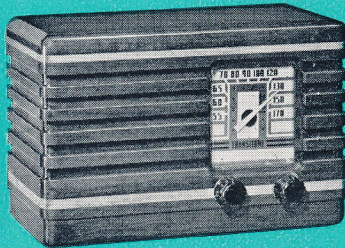
**TP-20** Brown plastic cabinet with amber grille. Built-in Loop Aerial, no outside wires of any kind. Just plug in anywhere and play. Gets Standard American Broadcasts, State and City Police. AC-DC Superheterodyne. 5 Loktal tubes, all working... no ballast tube. Improved Speaker. Automatic Volume Control.



**TH-16** AC-DC Superheterodyne. 5 Loktal tubes; all work, no ballast tube. Built-in Loop Aerial, no outside wires of any kind. Just plug in anywhere and play. Brown bakelite cabinet with carrying handle. Gets Standard American Broadcasts and State Police Calls. Improved Speaker. Automatic Volume Control.



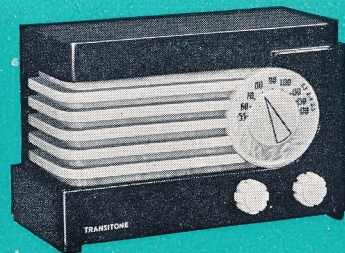
**TH-14** Handsome inlaid sliced Walnut cabinet. Built-in Loop Aerial, no outside wires of any kind. Just plug in anywhere and play. Gets Standard American Broadcasts. AC-DC Superheterodyne. Five new-type Loktal tubes. Every tube works... no ballast tube. Improved Speaker. Automatic Volume Control.



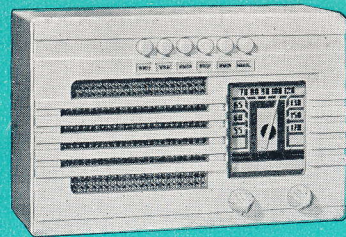
**TP-12** Walnut cabinet with contrasting Maple inlays. Efficient Attached Aerial. No ground required. Gets Standard American Broadcasts—State and City Police. 5 Loktal tubes, all working, no ballast tube. AC-DC Superheterodyne. Improved Speaker. Automatic Volume Control. Full-vision Dial.



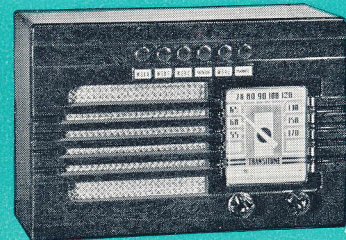
**TP-11** Electric Push-Button Tuning; 6 buttons. Brown plastic cabinet, amber color grille. Efficient Attached Aerial. No ground needed. Gets Standard American Broadcasts, City and State Police. AC-DC Superheterodyne, five Loktal tubes. Improved Speaker. Automatic Volume Control.



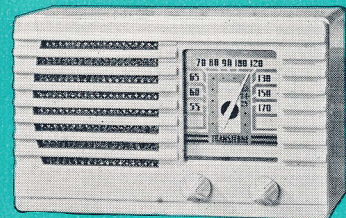
**TP-10** Smart brown and amber color bakelite cabinet. Efficient Attached Aerial. Requires no ground. Gets Standard American Broadcasts, City and State Police Calls, five-tube AC-DC Superheterodyne, all working Loktal tubes; no ballast tube. New Improved Speaker, Automatic Volume Control.



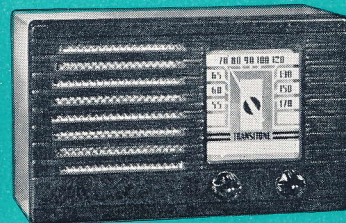
**TP5-1** Bakelite cabinet in rich, gleaming Ivory finish. Electric Push-Button Tuning; 6 buttons. Efficient Attached Aerial. No ground required. Gets Standard American Broadcasts, City and State Police Calls. AC-DC Superheterodyne, five Loktal tubes. Improved Speaker. Automatic Volume Control. Full-vision Dial.



**TH-5** Electric Push-Button Tuning; 6 buttons. Attached Aerial. Brown bakelite cabinet. Gets Standard American, State Police. AC-DC Superheterodyne, 5 Loktal tubes. Automatic Volume Control. TP-5-W Same, covering City Police.



**TP-4-1** Gleaming Ivory bakelite cabinet. Attached Aerial. Needs no ground. Gets Standard American Broadcasts, State and City Police. AC-DC Superheterodyne, 5 Loktal tubes. Improved Speaker. Automatic Volume Control. Full-vision Dial.



**TH-4** Brown bakelite cabinet. Attached Aerial. Needs no ground. Gets Standard American and State Police. AC-DC Superheterodyne. Five Loktal tubes. Improved Speaker. Automatic Volume Control. TP-4-W Same, with City Police. TH-18 Same, with American and Foreign Short-Wave coverage.