

PHILCO 1202

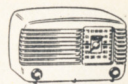
Single Record Radio-Phonograph with New Philco Automatic Record Player. 6 Tubes, including Rectifier. Controls Accessible at top of Cabinet. Electro-Dynamic Speaker. No Needles to Change. Gets Standard American Broadcasts. Handsome Cabinet of new design with fully enclosed back.



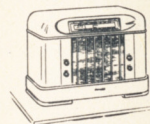
PHILCO 1201

Single Record Radio-Phonograph with New Philco Automatic Record Player. 5 Tubes, including Rectifier. Controls Accessible from Front. Electro-Dynamic Speaker. No Needles to Change. Standard Broadcasts. Handsome "Tear Drop" Cabinet of selected hardwoods in Philcote Zebrano graining.

ASK FOR SPECIAL FOLDERS DESCRIBING THESE PHILCO PRODUCTS



PHILCO TRANSITONE COMPACT RADIOS

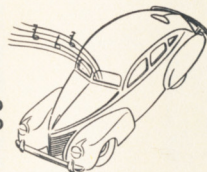


FARM RADIOS

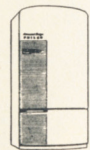


NEW PHILCO PORTABLE RADIO

NEW PHILCO AUTO RADIO



PHILCO FREEZERS



PHILCO REFRIGERATORS



PHILCO AIR CONDITIONERS

PHILCO

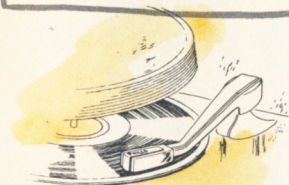
Famous for Quality the World Over

Printed in U.S.A.

PHILCO Radio- Phonographs

FOR 1946

TEN YEARS AHEAD
OF FOUR
YEARS AGO



New

DYNAMIC REPRODUCER

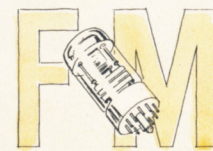
For the first time, professional studio record reproduction for the home... a major advance in the enjoyment of recorded music. Amazing fidelity of tone!



New

PHILCO RECORD CHANGERS

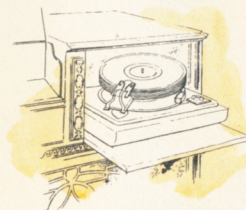
Newly developed by Philco, the most reliable, most trouble free, most smoothly operating record changers ever produced. Changes records quickly, quietly and gently.



New

PHILCO ADVANCED-FM

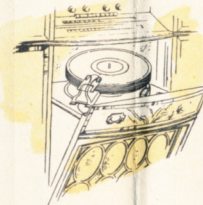
A fundamentally new FM circuit, invented and developed by Philco, that actually ignores noise... revolutionizes all former ideas of FM reception.



New

DROP PANEL AND TILT FRONT CABINET

In some models, a newly developed Drop Panel mechanism brings the record changer smoothly into position for easy access and convenient loading. In others, the grille tilts forward and reveals the turntable. No lid to lift. Exclusive!



New

HIGH FIDELITY TONE CONTROL

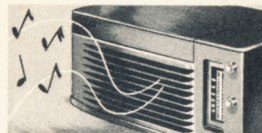
New Philco development which insures best tonal results on all bands. In "ON" position, it gives full high fidelity on FM and automatically adjusts for best AM and phonograph tone.

Here they are... sensational new radio and phonograph developments from the laboratories of Philco, the leader. Thrilling advances in fidelity of tone. Amazing improvements in performance and power. New cabinet creations of exquisite beauty. Thus Philco returns to its unbroken record of leadership, bringing you the newest triumphs of modern electronic research in radio and recorded music... ten years ahead of four years ago!

New Table Model Radio-Phonographs with Automatic Record Changer

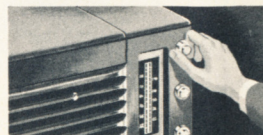
Philco engineering and design make the table model radio-phonograph with Automatic Record Changer *modern* and *up-to-date!*

Thanks to a completely new chassis and ingenious cabinet design, they are more compact than ever before. Instead of the bulky designs of the past, here are cabinets that are trim and graceful in appearance . . . yet they have the finest record changers ever produced for a table phonograph.



The tone comes from the front of the cabinet

Radio Controls accessible without lifting lid

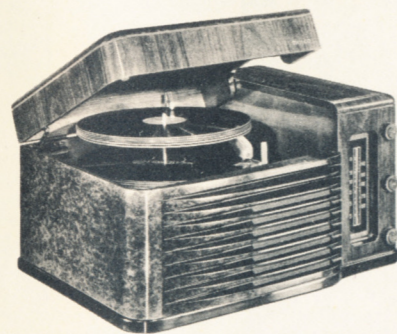


Then note these *two* features. The tone comes from the front of the cabinet. Radio controls are accessible from the front without lifting the lid. The *combination* of these features is the result of a brand new engineering concept in cabinet and chassis design.



PHILCO 1204

New Philco Record Changer. New FM Band. 6 Tubes, including Rectifier. No Needles to Change. Controls Accessible from Front. Electro-Dynamic Speaker. Two-Position Tone Control and Combined Radio-Phono Switch. Standard Broadcasts, FM Stations and State Police Calls. Walnut Table Cabinet of New Design.



PHILCO 1203

New Philco Record Changer. 6 Tubes, including Rectifier. No Needles to Change. Controls Accessible from Front. Beam Power Pentode Audio System. R. F. Stage. New Philco Built-In Aerial System. Two-Way Switch and Volume Control. Standard Broadcasts. Distinctive Table Cabinet of new design, lustrous Philcote Finish.

PHILCO RADIO-PHONOGRAPH WITH AUTOMATIC RECORD PLAYER

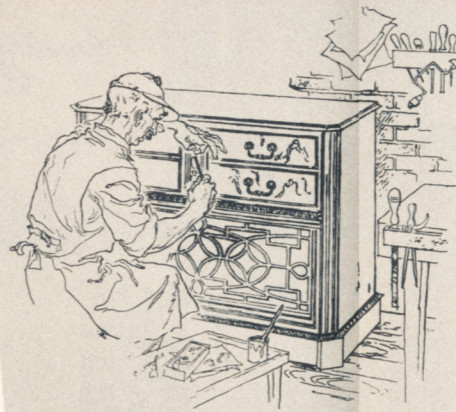


Just put a record
in the slot...
and it plays!

The amazing, new Philco Automatic Record Player makes the single record manual radio-phonograph *obsolete*. Now, the only thing you do by hand is open the door and put a record (*any size*) in the slot. Everything else is automatic! The motor starts, the tone arm places itself on the record and the music plays. When it's finished, the motor stops . . . *all* automatically. Take out the record, put another in the slot . . . that's all there is to it, as long as you want to play. Makes manual operation *automatic!*

**It's an exclusive Philco invention,
patent pending. Only Philco has it!**

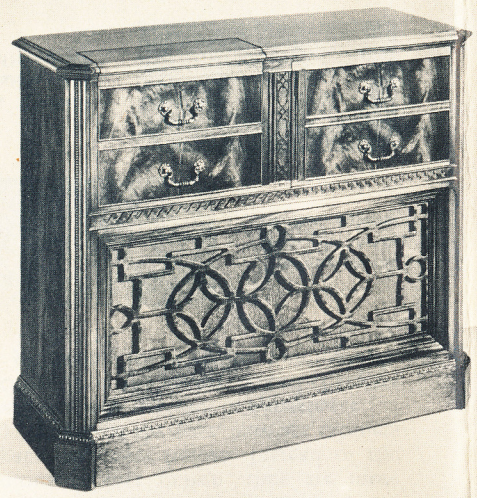
"Custom Built by Philco"

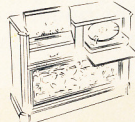


In these exquisite radio-phonograph cabinets of authentic traditional design, the scientists and engineers of the Philco laboratories bring to music lovers of discriminating taste the finest standards of musical reproduction, including every new development which adds to your enjoyment of radio and recorded music.

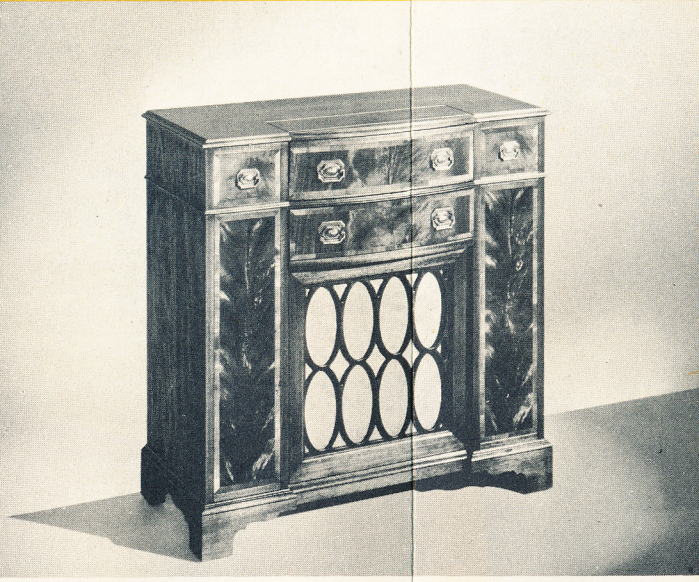
As a result of an entirely new approach to the problems of radio furniture design, Philco presents a series of "Custom-Built" radio-phonograph models which are absolutely correct in traditional period design.

Until now, period cabinets have always been designed around a regular radio or phonograph chassis whose structural details have always forced a compromise with true traditional lines. Now, Philco has reversed the process. Engineers were called upon to build a chassis that would fit an authentic period cabinet. The result is not a mechanical instrument clothed in pseudo-traditional lines, but a musical instrument of quality and distinction in a cabinet of truly correct design . . . to delight the connoisseur and adorn the setting of any room.



 *Chippendale*
Philco 1217

The world's most luxurious enjoyment of radio and recorded music . . . in an exquisite Chippendale cabinet, embodying all the dignity and grace of the early masters in the art of furniture design! Mahogany swirl veneers, decorative crotch Mahogany . . . ideally combined, perfectly finished. *** Exclusive Philco Advanced-FM System. 14 Tubes, including Rectifier. High Fidelity Tone Control. 3 Balanced Dynamic Speakers. New Dynamic Reproducer. New De Luxe Record Changer. Featherweight Tone Arm with Permanent Jewel. Push-Button Motor Tuning for FM and AM. Standard Broadcasts, FM, American and Foreign Short-Wave, State Police, Amateurs.



 *Sheraton*
Philco 1216

Incomparable radio and record tone! The greatest Philco electronic achievements . . . housed in a distinctive cabinet of Sheraton design . . . reflecting all the richness and simplicity of Sheraton period furniture. A creation of beautifully matched, gleaming-finish Mahogany woods. *** Exclusive Advanced-FM System. 14 Tubes, including Rectifier. High Fidelity Tone Control. 2 Balanced Dynamic Speakers. New Philco Dynamic Reproducer. De Luxe Record Changer. Push-Button Motor Tuning for FM and AM. Featherweight Tone Arm with Permanent Jewel. Standard Broadcasts, FM, Day and Night American and Foreign Short-Wave, State Police, Amateurs.



 *Regency*
Philco 1215

A masterful reproduction of the authentic English Regency pattern. Here is musical enjoyment in full measure . . . tonal beauty, performance and power! Cabinet of the finest Mahogany woods . . . finished to a high and durable lustre. *** Exclusive Philco Advanced-FM System. 14 Tubes, including Rectifier. High Fidelity Tone Control. 2 Balanced Dynamic Speakers. New Philco Dynamic Reproducer. New Philco De Luxe Record Changer. Featherweight Tone Arm with Permanent Jewel. Push-Button Motor Tuning for FM and AM. Covers Standard American Broadcasts, FM Stations, American and Foreign Short-Wave, State Police Calls and Amateur Broadcasts.



 *Hepplewhite*
Philco 1214

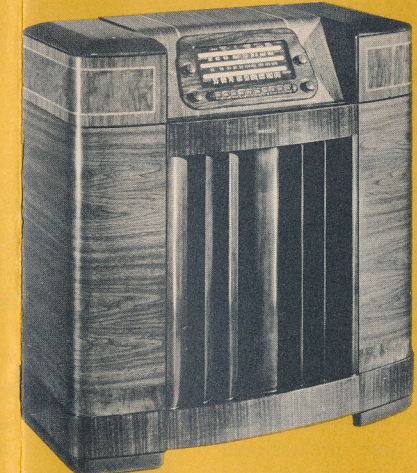
Full fidelity of tone . . . unexcelled radio and phonograph performance . . . in a cabinet of authentic Hepplewhite design! A perfect blend of quartered American Walnut, crotch Walnut and Walnut veneers . . . finished to a satiny sheen. Truly a magnificent creation! *** Exclusive Advanced-FM System. 14 Tubes, including Rectifier. High Fidelity Tone Control. 2 Balanced Dynamic Speakers. New Dynamic Reproducer. De Luxe Record Changer. Featherweight Tone Arm with Permanent Jewel. Push-Button Motor Tuning for FM and AM. Standard American Broadcasts, FM Stations, American and Foreign Short-Wave, State Police, Amateurs. *Also available in Mahogany.*

THESE RADIO-PHONOGRAPH CONSOLES GIVE YOU THE UTMOST IN RADIO AND RECORD ENJOYMENT AT THEIR PRICE



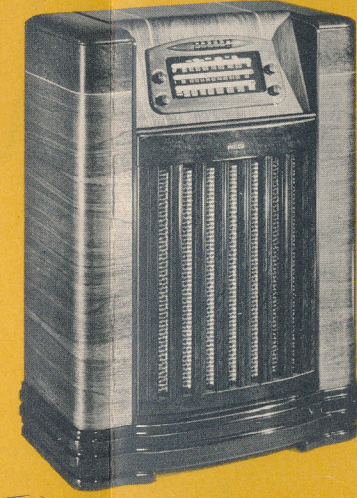
 *Philco 1213*

The highest achievements of Philco research in radio and recorded music . . . brought to you in a Mahogany cabinet of distinctive Chippendale pattern! Built of perfectly matched Mahogany woods. *** Advanced-FM System. 11 Tubes, including Rectifier. Dynamic Reproducer. De Luxe Record Changer. Featherweight Tone Arm with Permanent Jewel. Electric Push-Button Operation. Standard Broadcasts, FM Stations, American and Foreign Short-Wave, State Police, Amateurs. *Also available in Bleached Mahogany.*



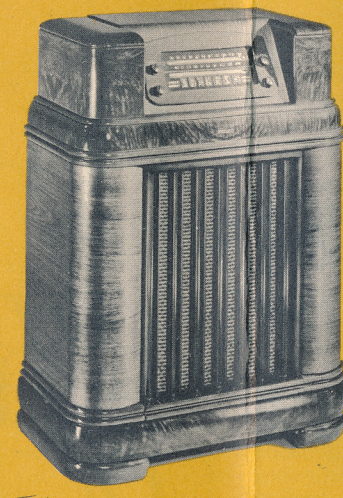
 *Philco 1211*


A sensational value in radio and phonograph entertainment . . . power, performance and tonal quality . . . in a cabinet of massive beauty! A masterful use of Walnut veneers, butt Walnut and Narra wood inlays fashion a cabinet of exceptional beauty for the home. *** Advanced-FM System. 11 Philco Tubes, including Rectifier. Dynamic Reproducer. De Luxe Record Changer. Electric Push-Button Operation. No Needles to Change. Standard Broadcasts, FM, Short-Wave, State Police, Amateurs.



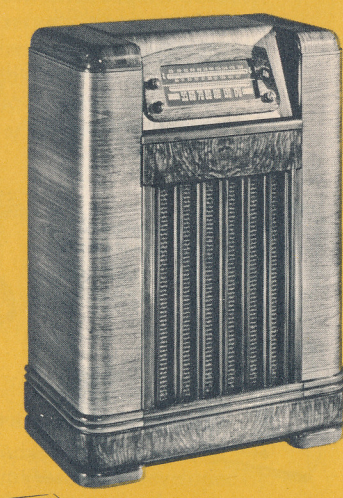
 *Philco 1210*

Offers you every Philco feature for finer record and radio music! A big, substantial, streamlined Walnut cabinet creation of rich, costly veneers . . . with Birdseye Maple Graining and Black Holly and Narra wood inlays. *** New FM Band. 8 Philco Tubes, including Rectifier. Dynamic Reproducer. New Philco Record Changer. Electric Push-Button Tuning. No Needles to Change. Improved Tilt Front Cabinet. Standard Broadcasts, FM Stations, Foreign Short-Wave, State Police Calls and Amateurs.



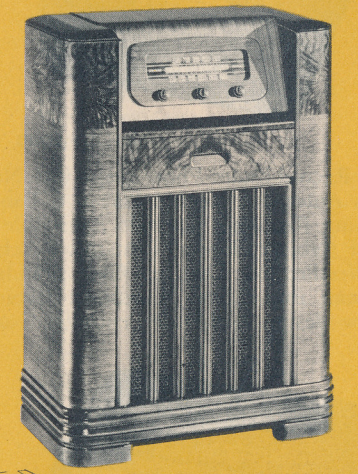
 *Philco 1208*


Bringing you the newest of Philco features! FM reception! No needles to change! New pleasure from radio and recorded music . . . new beauty for the home! Yes, a lovely new console model of Walnut veneers, with Walnut grainings. ** New FM Band. 8 Philco Tubes, including Rectifier. New Record Changer. Combined Bass Compensation and Treble Tone Control. Dynamic Speaker. Push-Pull Pentode Audio System. Improved Tilt Front Cabinet. Standard Broadcasts, FM, State Police Calls.



 *Philco 1207*

Modern beauty and new features, even at this lower price! A large, handsomely designed cabinet of Walnut veneers with decorative Walnut graining. Beautiful ivory and gold grille cloth. *** New FM Band. 7 Tubes, including Rectifier. New Philco Record Changer. No Needles to Change. Improved Tilt Front Cabinet. Standard Broadcasts, FM, Police Calls.



 *Philco 1206*

The amazing new Philco Automatic Record Player in an exquisite Walnut console . . . a sensational value in beauty, tone and performance! Genuine sliced Walnut in brilliant Walnut finish and Walnut graining. *** 6 Tubes, including Rectifier. Two-Position Tone Control. Dynamic Speaker. R. F. Stage. Covers Standard American Broadcasts.