

**NEW
PHOTO-ELECTRIC
RADIO-
PHONOGRAPH**

**RECORDS LAST
10 TIMES LONGER!
NO NEEDLES
TO CHANGE**

**GLORIOUS
TONE**

**HOME
RECORDING**

**RECORDS
REPRODUCED
ON A BEAM
OF LIGHT**

**NEW
KIND OF
OVERSEAS
WAVE-BAND**

**NEW
TILT-FRONT
CABINET**

**EUROPE...
5 TIMES STRONGER
5 TIMES EASIER
TO TUNE**

**BIGGER
SPEAKERS**

**JUST
PLUG IN AND PLAY
NO AERIAL OR
GROUND WIRES**

**NEW
AMERICAN AND
OVERSEAS
AERIAL
SYSTEM**

**MORE
TUBES FOR
THE
MONEY**

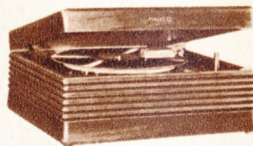
**PHOTO-ELECTRIC
PHONOGRAPH**

620P 6-tube Phonograph with Philco Photo-Electric Reproducer. 9-inch Oval Speaker. Push-Pull Pentode Audio System. Variable Tone Control. Bass Compensation. Plays 10" and 12" records. Attractive Walnut cabinet.



RP6 Wireless Record Player in table-type cabinet. Top space for radio or decorations; easy-sliding drawer contains Record Player. Plays records through your radio circuit without wires or connections to radio. Crystal Pick-up. Plays 10" and 12" records.

RP2 Plays records through your radio . . . without wire connections to the radio. Reproduces 10" and 12" records with full beauty of tone.



RP1 Similar to RP2, but has no lid.

**ANY 1941 PHILCO YOURS ON
EASIEST MONTHLY TERMS**

PHILCO



RADIOS AND

RADIO-PHONOGRAPHS

FOR 1941

A MUSICAL INSTRUMENT OF QUALITY

Sensational 1941 Philco Inventions —

A NEW KIND OF RADIO-PHONOGRAPH

Plays Any Record on a
BEAM OF LIGHT

A new kind of radio-phonograph is here, invented by Philco! Based on an entirely new principle, it brings you new delights in the enjoyment of recorded music. Now, the ordinary phonograph that scrapes music from the record, that asks you to change needles, to put up with surface noise and record wear, to lift lids, remove decorations or fuss with clumsy compartments is obsolete.

In the amazing new Philco Photo-Electric Radio-Phonograph, a rounded jewel, that never needs changing, floats gently over the record grooves and reflects the music on a BEAM OF LIGHT from a tiny mirror to a Photo-Electric cell. Record wear and surface noise are reduced by 10 to 1. And you enjoy glorious new beauty of tone. See the new Philco Photo-Electric Radio-Phonographs illustrated inside.

Through and through, PHILCO for 1941 offers you the greatest values in its history. More tubes for the money . . . Bigger, Finer Speakers . . . New Conveniences in Tuning and Operation. AND . . . the loveliest cabinets Philco has ever produced,

NOW . . . A NEW RADIO CIRCUIT

Reduces Noise and Interference by 5 to 1. Makes European Reception 5 Times Stronger, Clearer and Easier to Tune.

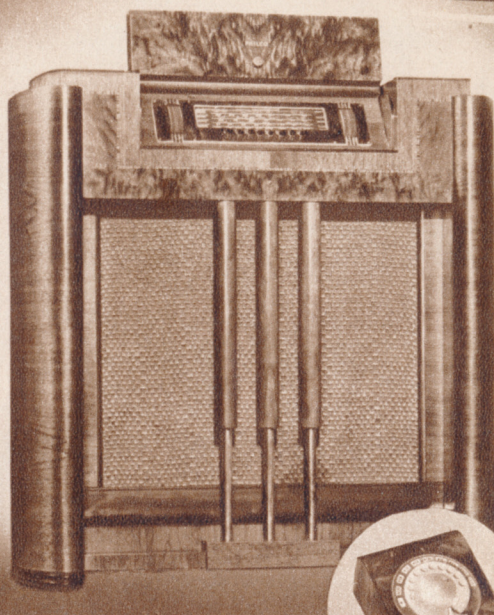
A BRAND NEW RADIO CIRCUIT, dreamed of but never before achieved by radio science, reduces noise by 5 to 1, reduces "cross-talk" by 20 to 1 and increases selectivity by more than 2 to 1 . . . all this made possible by the amazing XXL Noise-Reducing Converter Tube, a new invention by Philco engineers.

In these stirring times, it makes the capitals of Europe as much a part of your daily radio fare as your favorite chain programs or local stations. It's brand new . . . sensational . . . nothing like it has ever been known in radio!

NEW BUILT-IN AMERICAN AND OVERSEAS AERIAL SYSTEM gives you far greater sensitivity on short-wave and standard reception. And you need no "installation," no aerial or ground wires on your roof or around your room . . . just plug in and play!

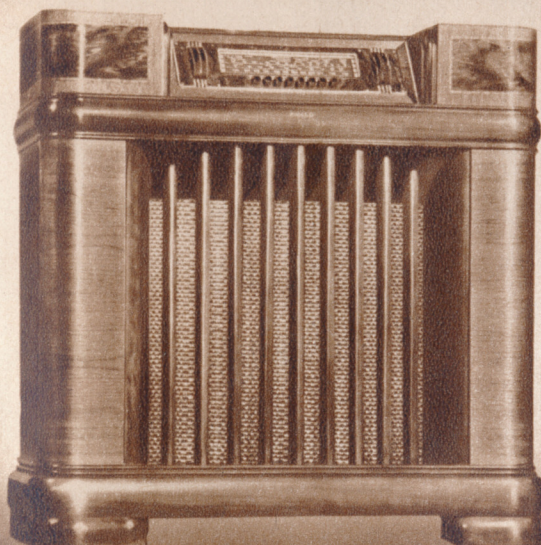
in a Complete Variety of Period and present day designs. Every 1941 Philco is built to receive Television Sound and Frequency Modulation (FM) . . . the Wireless Way, when used with Philco Television Picture Receiver or FM Converter.

THE UTMOST IN RADIO TONE AND PERFORMANCE FOR 1941



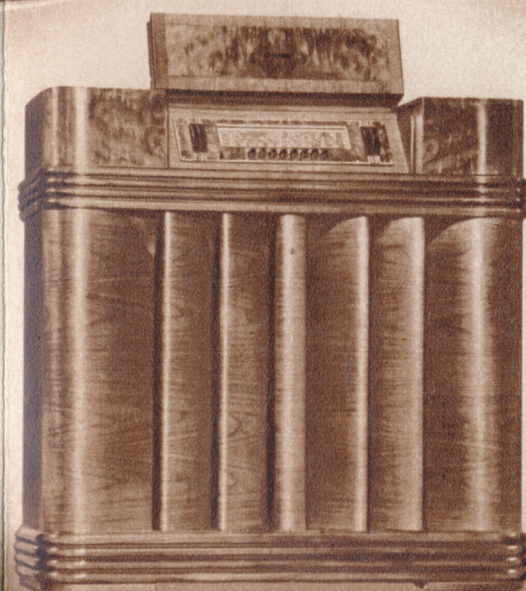
316RX Wireless Remote Control tunes favorite programs from any room without wires or connections. 15-tube Superheterodyne Circuit, with new XXL tubes. Overseas Wave-Band. Variable Tone Control. 8 Push-Buttons; 7 for favorite stations, 1 "Remote." Walnut Cabinet. 4 Tuning bands cover American, American and Foreign Short-Wave, State and City Police, Aircraft, Ship and Amateurs.

315X Twelve-tube Superheterodyne in same cabinet, without Remote Control.



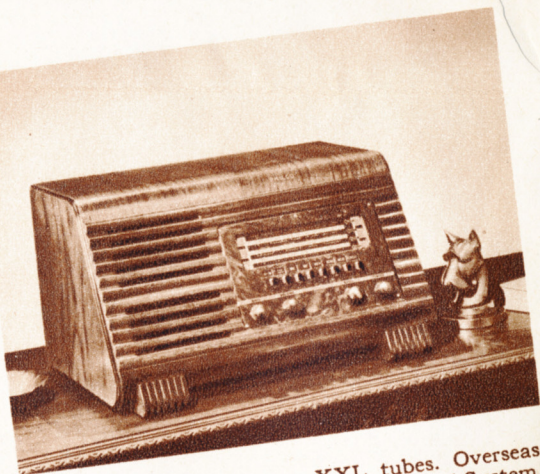
295X Eleven-tube Superheterodyne Circuit, with new XXL tubes. Overseas Wave-Band. Built-In American and Overseas Aerial System. Cathedral Speaker. Variable Tone Control. 8 Push-Buttons; 7 for favorite stations, one for "On-Off." Highly-figured Walnut cabinet. Illuminated Shifting Band Arrow. 4 Tuning Bands cover American, American and Foreign Short-Wave, State and City Police, Aircraft, Ship and Amateurs.

296X Nine-tube Superheterodyne in same cabinet. 3 Tuning Bands.



300X Twelve-tube Superheterodyne Circuit, including two newly invented, noise reducing XXL Converter tubes. New kind of Overseas Wave-Band. Built-In American and Overseas Aerial System. Cathedral Balanced Field Speaker. Variable Tone Control. 8 Electric Push-Buttons; 7 for favorite stations, one for "On-Off." Illuminated Call Letters. Inclined Sounding Board and Control Panel. Distinctive Walnut cabinet. Illuminated Shifting Band Arrow. 4 Tuning Bands cover Standard Broadcasts, American and Foreign Short-Wave, State and City Police Calls, Aircraft, Ship and Amateurs.

Table Models of Quality!



250T 8 tubes, with new XXL tubes. Overseas Wave-Band. American and Overseas Aerial System. Variable Tone Control. 8 Push-Buttons; 7 for stations, one for "On-Off." Push-Pull Pentode Audio. Illuminated Shifting Band Arrow. 3 Bands cover Standard, American and Foreign Short-Wave, State and City Police, Aircraft, Ship and Amateurs.

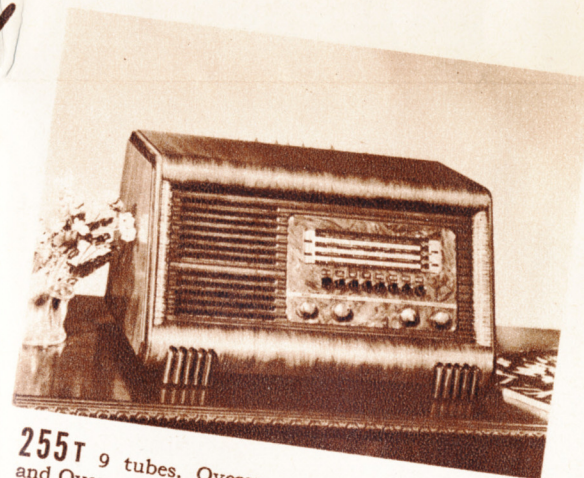


231T Six tubes. AC-DC. Overseas Wave-Band. New Aerial System. 6 Push-Buttons. Standard Broadcasts, American and Foreign Short-Wave, State Police.

226C Same features in different cabinet.



225C Six tubes, AC-DC. R.F. Stage. Built-In Super-Aerial System. Electro-Dynamic Speaker. 6 Electric Push-Buttons. Pentode Audio System. Gets Standard Broadcasts, State and City Police Aircraft, Amateurs.



255T 9 tubes. Overseas Wave-Band. American and Overseas Aerial System. 8 Push-Buttons. American Pull Pentode Audio. 3 Bands cover Standard, American and Foreign Short-Wave, State, City Police, Aircraft, Ship, Amateurs.

256T In same cabinet, with American and Foreign Day and Night Short-Wave, State Police, Aircraft, Ship, Amateurs.



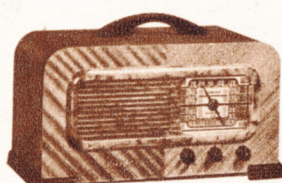
245T Seven tubes. Overseas Wave-Band. New Aerial System. 6 Push-Buttons. Standard, American and Foreign Short-Wave, State, City Police, Aircraft, Amateurs.

246T In same cabinet with American and Foreign Day and Night Short-Wave, State Police, Aircraft, Amateurs.



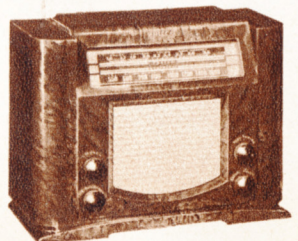
220C Six tubes, AC-DC. R. F. Stage. Super-Aerial System. Pentode Audio. Standard, State and City Police, Aircraft, Amateurs.

220Cl Same features in Ivory cabinet.

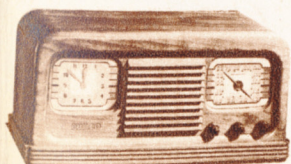


221C Six tubes. AC-DC. New XXD tube. New Overseas Wave-Band. Built-In American and Overseas Aerial System. Pentode Audio System. Gets Standard Broadcasts, American and Foreign Short-Wave, State Police.

221Cl AC-DC. Same as 221C in cabinet of Walnut with Ivory-finished bezel; knobs and trim.



230T Seven-tube Superheterodyne, new XXL tubes. Built-In Super Aerial System. Pentode Audio System. Tone Control. Illuminated Dial. Smart cabinet of reddish brown plastic. Gets Standard, State and City Police, Aircraft, Amateurs.

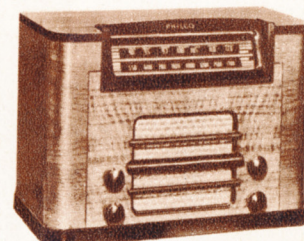


222Cl AC only. Has the same radio features as the 220C (above), plus self-starting Electric Clock. Walnut cabinet.



221Cl AC-DC. Same as 221C in cabinet of Walnut with Ivory-finished bezel; knobs and trim.

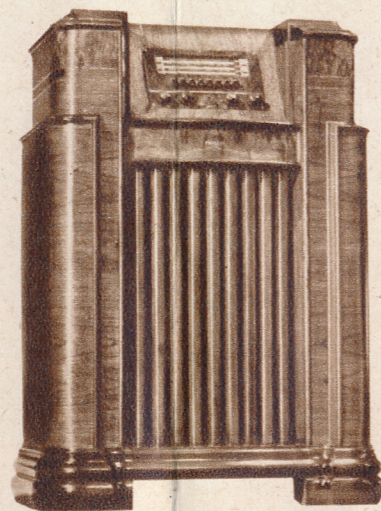
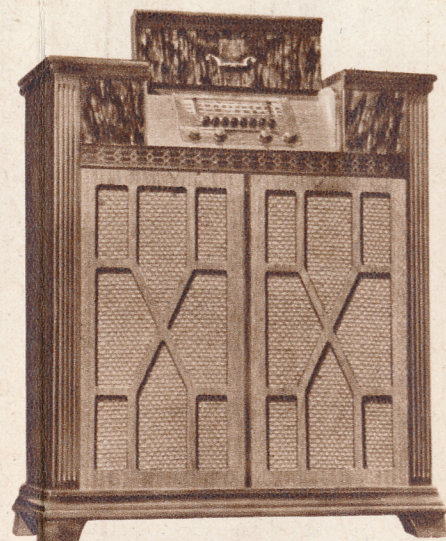
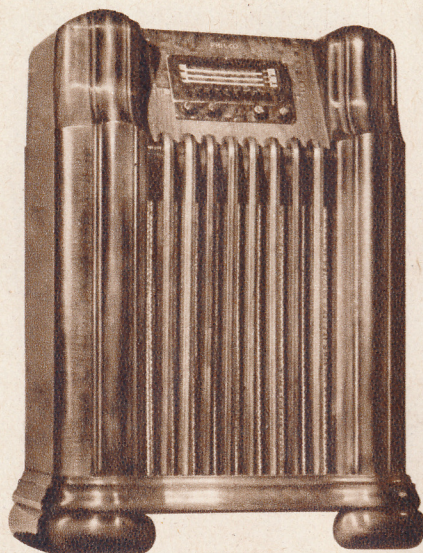
240T Seven-tube Superheterodyne with new XXL tubes. Overseas Wave-Band. Built-In American and Overseas Aerial-System. Variable Tone Control. Pentode Audio System. Illuminated Dial. Gets Standard, American and Foreign Short-Wave, State Police.



235T Seven-tube Superheterodyne including new XXL tubes. Built-In Super Aerial System. Pentode Audio System. Tone Control. Illuminated Dial. Gets Standard Broadcasts, State and City Police, Aircraft, Amateurs.



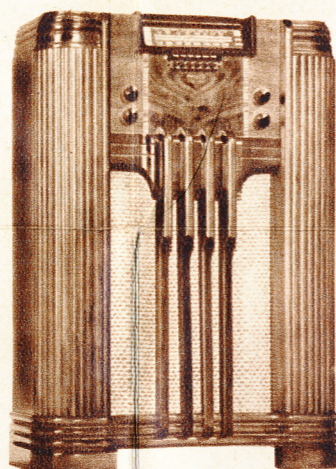
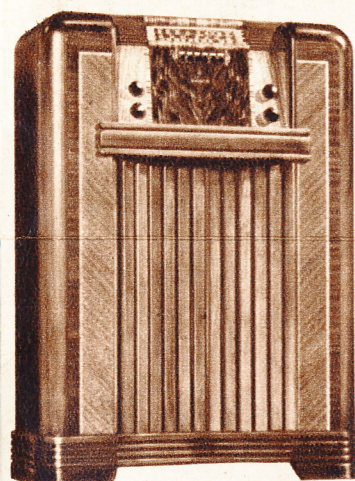
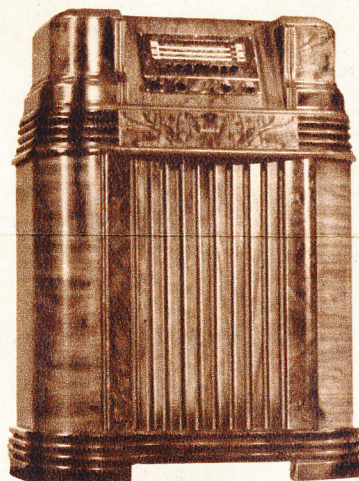
PHILCO OFFERS ITS SENSATIONAL 1941 RADIO INVENTIONS IN A STYLE TO SUIT YOUR TASTE, AT A PRICE TO SUIT YOUR PURSE!



290X Ten-tube Superheterodyne Circuit, including new XXL tubes. New Overseas Wave-Band. American and Overseas Aerial System. 8 Electric Push-Buttons. 3 Tuning Bands cover Standard, American and Foreign Short-Wave, State and City Police, Aircraft, Ship and Amateur broadcasts.

287X Nine-tube Superheterodyne Circuit, including new XXL tubes. New Overseas Wave-Band. American and Overseas Aerial System. 8 Electric Push-Buttons. 3 Tuning Bands cover Standard, American and Foreign Short-Wave, State and City Police, Aircraft, Ship and Amateur broadcasts.

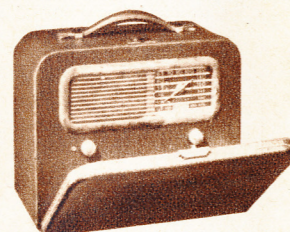
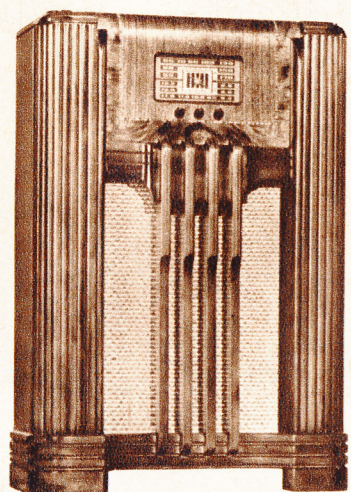
285X Nine-tube Superheterodyne Circuit, including new XXL tubes. Overseas Wave-Band. Built-In American and Overseas Aerial System. 8 Electric Push-Buttons. 3 Tuning Bands cover Standard Broadcasts, American and Foreign Short-Wave, State and City Police, Aircraft, Ship, Amateurs



280X Eight-tube Superheterodyne Circuit, including new XXL tubes. New Overseas Wave-Band. Built-In American and Overseas Aerial System. 8 Electric Push-Buttons. 3 Tuning Bands cover Standard Broadcasts, American and Foreign Short-Wave, State and City Police Calls, Aircraft, Ship and Amateurs.

265K Seven-tube Superheterodyne Circuit, including new XXL tubes. New Overseas Wave-Band. Built-In American and Overseas Aerial System. 6 Electric Push-Buttons. 3 Tuning Bands cover Standard Broadcasts, American and Foreign Short-Wave, State and City Police Calls, Aircraft, Ship and Amateurs.

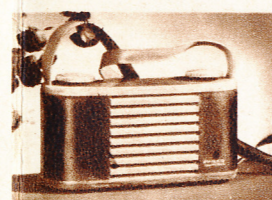
260F Seven-tube Superheterodyne Circuit, including new XXL tubes. New Overseas Wave-Band. Built-In American and Overseas Aerial System. 6 Electric Push-Buttons. Covers Standard Broadcasts, American and Foreign Short-Wave Programs and State Police Calls.



844T New, 7-tube Portable. AC, DC or Battery. Amazing performance, superb tone. Solid Walnut case with Beaver graining.

843T New, 7-tube Portable. AC, DC or Battery. New, fine tone, extreme sensitivity, selectivity. Walrus grain case with drop cover.

842T New, 7-tube Portable. AC, DC or Battery. Tremendous power, amazing sensitivity, selectivity. Beaver graining case.



87PT AC, DC or Battery Portable. 5 tubes, Built-In Loop Aerial, Permanent Magnet Speaker. Smart, lightweight case.

851T AC, DC or Battery Portable. American and Foreign Short-Wave. Standard Broadcasts. 5 tubes. Ostrich graining case.

89C New Shoulder Strap Portable, plays anywhere. Real radio performance! Small, light, ideal for traveling.

258F Six-tube AC-DC Superheterodyne, including new XXD tube. New Philco Built-In Super Aerial System. Concert-Grand Electro-Dynamic Speaker. Pentode Audio System. Automatic Volume Control. Exquisite Console Cabinet. Covers Standard Broadcasts, State and City Police, Night Aircraft and Amateur Stations.

Amazing Philco Photo-Electric RADIO-PHONOGRAPHS

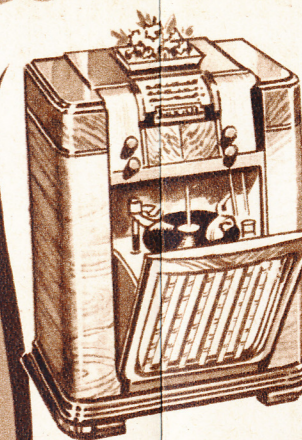
RECORDS REPRODUCED ON A BEAM OF LIGHT!

No Needles to Change... Records Last 10 Times Longer... Glorious New Beauty of Tone!

By a new Philco principle, a rounded jewel floats over the records and reflects the music on a beam of light from a tiny mirror to a photo-electric cell. The floating jewel lasts for 8 to 10 years of normal use! In all that time, no needles to change!

as much as 700 times without fear of wear. And for the first time, you hear the full beauty of every record; rich, deep "lows" without sacrifice of clear, brilliant "highs." Surface noise and needle talk no longer mar purity of tone. The most glorious record tone you have ever heard!

No more hoarding your most prized and precious records! Play them, now,

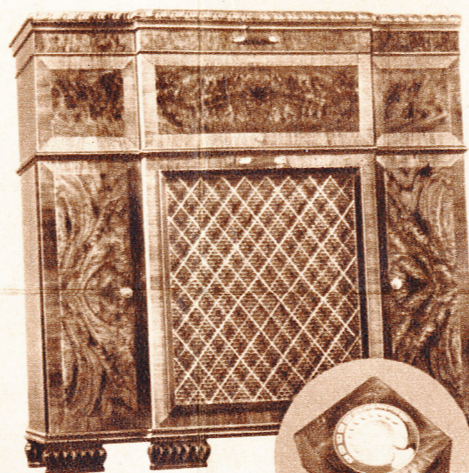


New! TILT-FRONT CABINET

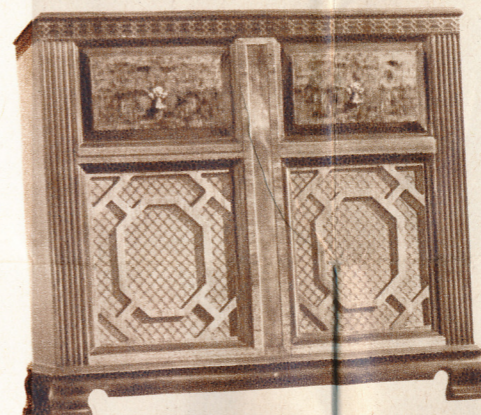
New beauty and convenience. No lid, no need to remove ornaments to reach the phonograph. No dark, awkward, unsightly compartment. New principle tilts phonograph forward, in full view and easy to use. Only Philco has it!

MAKE YOUR OWN RECORDS AT HOME

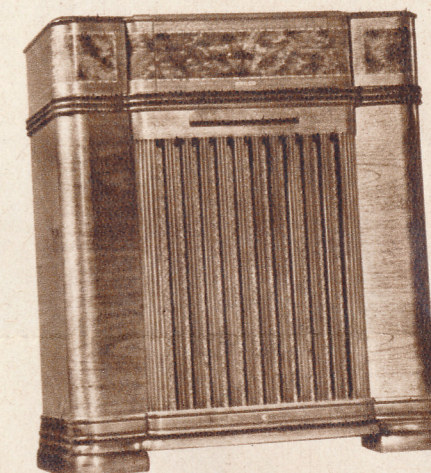
The Philco Home Recording Unit is optional equipment with Philco Photo-Electric Phonographs. Makes life-like recordings, free from record scratch. Records played through Philco Photo-Electric Reproducer are good for 10 times as many playings!



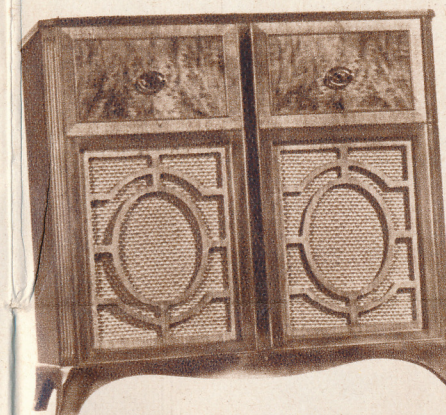
616P Wireless Remote Control. Photo-Electric Reproducer. 16 tubes. Inter-Mix Record Changer. Tilt-Front Georgian cabinet. Overseas Wave-Band. Built-In American and Overseas Aerial System. 8 Electric Push-Buttons. 4 Tuning Bands. Standard, American and Foreign Short-Wave, State, City Police, Aircraft, Ship, Amateurs.



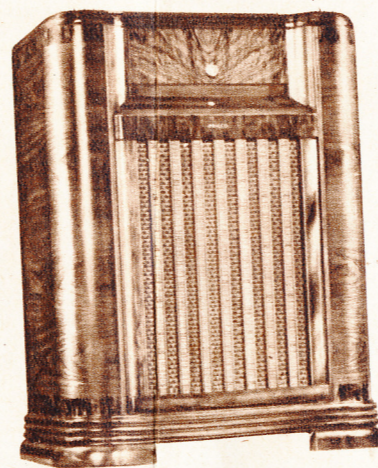
611P Philco Photo-Electric Reproducer. 10-tube Phonograph Circuit. Deluxe Inter-Mix Record Changer. Tilt-Front cabinet, authentic Chippendale design. New Overseas Wave-Band. Built-In American and Overseas Aerial System. 8 Electric Push-Buttons. 3 Tuning Bands cover Standard Broadcasts, American and Foreign Short-Wave, State and City Police, Aircraft, Ship and Amateurs.



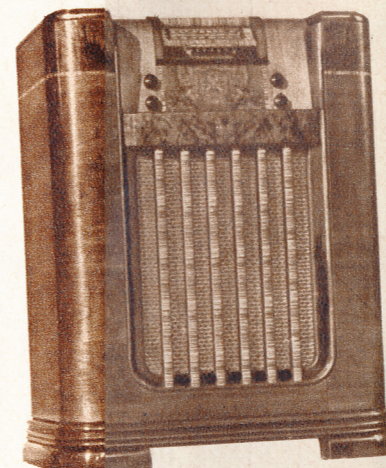
610P Philco Photo-Electric Reproducer. 10-tube Phonograph Circuit. Automatic Record Changer. Tilt-Front Cabinet. New Overseas Wave-Band. Built-In American and Overseas Aerial System. 8 Electric Push-Buttons. 3 Tuning Bands cover Standard Programs, American and Foreign Short-Wave, State and City Police, Aircraft, Ship, Amateurs.



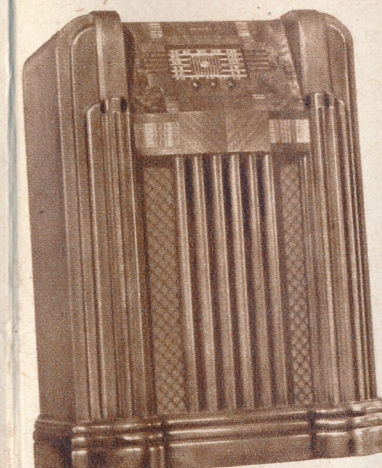
609P Philco Photo-Electric Reproducer. 9-tube Phonograph Circuit. Automatic Record Changer. Tilt-Front Cabinet, authentic Hepplewhite design. New Overseas Wave-Band. Built-In American and Overseas Aerial System. 6 Electric Push-Buttons. Covers Standard Broadcasts, American and Foreign Short-Wave, State Police Calls.



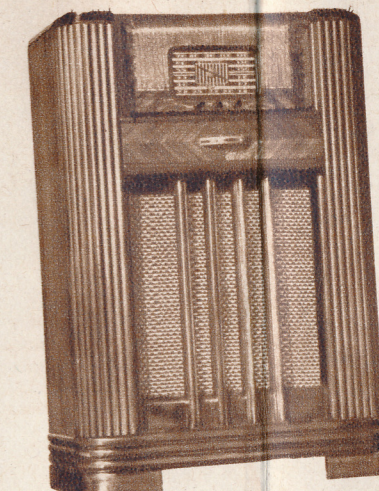
629P Philco Photo-Electric Reproducer. 9-tube Phonograph Circuit. Automatic Record-Changer. Tilt-Front Cabinet. New Overseas Wave-Band. Built-In American and Overseas Aerial System. Six Electric Push-Buttons. Covers Standard Broadcasts, American and Foreign Short-Wave, State Police Calls.



608P Philco Photo-Electric Reproducer. 9-tube Phonograph Circuit. Automatic Record Changer. Tilt-Front Cabinet. New Overseas Wave-Band. Built-In American and Overseas Aerial System. 6 Electric Push-Buttons. Covers Standard Broadcasts, American and Foreign Short-Wave, State Police Calls.



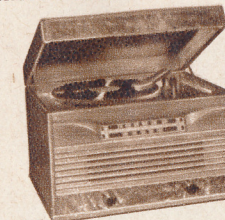
625P Philco Photo-Electric Reproducer. 7-tube Phonograph Circuit. Automatic Record Changer. Tilt-Front Cabinet. Beam Power Audio System. Permanent Magnet Speaker. Overseas Wave-Band. Built-In American and Overseas Aerial System. Covers Standard Broadcasts, American and Foreign Short-Wave, State Police Calls.



624P Philco Photo-Electric Reproducer. 7-tube Phonograph Circuit. Tilt-Front Cabinet. Overseas Wave-Band. Built-In American and Overseas Aerial System. Permanent Magnet Speaker. Self-starting Phonograph Motor. Covers Standard Broadcasts, American and Foreign Short-Wave, State Police.



623P Philco Photo Electric Reproducer. 7-tube Phonograph Circuit. Overseas Wave-Band. Gets Standard Broadcasts, American and Foreign Short-Wave, State Police.



601P 5-tube Phonograph Circuit. New light-weight Crystal Pickup; flexible, long-life needle plays 1000 records. Tone Control. Gets Standard Programs, State Police.