

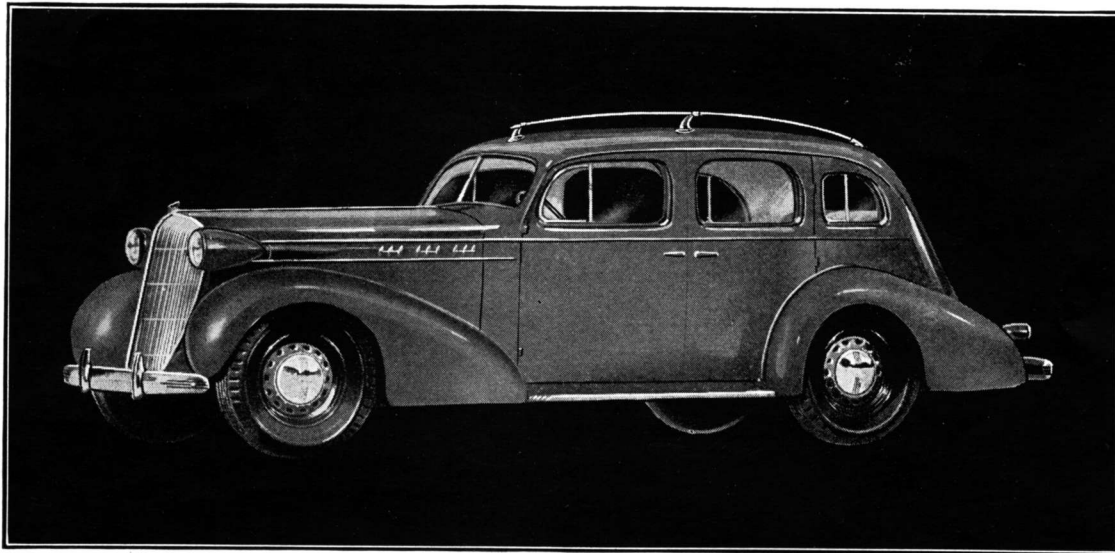
New

Different

Distinctive

Outstanding

PHILCO CAR-TOP AERIAL



EASY
TO
INSTALL

EXTREMELY
ATTRACTIVE
APPEARANCE

Performance - Beauty - Simplicity - Moderate Price

New — Different from Any Other Car Aerial

The New Philco Car-top Aerial includes all the desirable qualities of a car aerial and has been carefully engineered to eliminate the difficulties experienced with earlier type over-car aerials.

Consisting of a solid, stainless steel rod 80" in length, it is secured to the roof by three attractive streamlined insulating stanchions which are fastened to the roof in such a way as to provide a permanent and rigid installation. This method of mounting is also water-tight and insures freedom from the many troubles experienced with other types of external aerials. The lead-in is brought into the car through the front stanchion.

Attractive Yet Efficient

As you can see from the illustration, the new Car-top Aerial is neat and attractive, and blends perfectly with the lines of the modern cars. However, it is attractive not only in appearance, it is highly efficient in performance as well. The signal pickup is equal, if not superior to that of the average under-car aerial.

Unaffected by Road or Weather Conditions

Another outstanding advantage of this new aerial is that its location makes it unaffected by ice and mud or

bad road conditions. Stones, gravel and mud thrown up by the car cannot damage this aerial as it might an aerial underneath the car. It is truly a weather-proof, road-proof aerial.

Minimum Interference Pick-up

Since the location of the Car-top Aerial places it as far as possible from the source of ignition interference and "tire static," the chance of annoyance from these disturbances, which are encountered with other type aerials, is reduced to an absolute minimum. This advantage should be stressed in selling to the car owner.

Car Owners Will Buy on Sight

This new, attractive, efficient Car-Top aerial will meet with immediate acceptance by the public — the demand for it will be tremendous. Many car owners will be attracted by its appearance alone and will need little further selling — but you have more than ample sales ammunition in the many advantages outlined above.

Be Prepared for the Demand —

*Order a Supply from
Your Distributor NOW!*

New PHILCO CAR-TOP AERIAL

LIST
PRICE

Part No. 45-2351
\$5.00
FULL DISCOUNTS

Instructions for Installation—Philco Car-Top Aerial—Part No. 45-2351

1. Using a chalked cord, lay out a "Center line" the full length of the car top.

2. Lay the paper template over the "center-line," placing the front edge of the template flush with the top edge of the windshield opening. In case there is a crest or ridge at this point, move the template back beyond it so that the front stanchion will fit snugly on the roof. With a sharp punch, lightly mark the location of the mounting screw holes and the larger hole for the aerial connector. Care must be taken not to dent the top of the car by striking the punch too heavily.

3. Assemble the No. 1 aerial rod (threaded at both ends). Put the No. 1 stanchion on the front end and screw on the rod end. Then screw the No. 2 stanchion on the rear end. (See cut for assembly details). The numbers referred to here are the numbers moulded in the base of the stanchion.

4. Set up this section of the antenna on the roof, lining up the holes in the front stanchion with the punch marks on the roof. The No. 2 stanchion must be centered on the "center-line." Then mark the mounting screw hole locations on the roof.

5. The No. 2 aerial rod may be too long for installation on some cars without cutting. Screw the No. 2 rod securely into the back of the No. 2 stanchion and determine the length of the rod to be used and the best location for the rear stanchion.

Locate the rear stanchion a few inches above the rear window. The rod must be gently bowed and free from all sharp bends. If necessary to shorten the rod, mark the rod and cut to the proper length with a hack saw. Protect the rod from the jaw marks, if held in a vise.

Fit the rear stanchion over the end of the rod and then lightly mark the mounting hole

locations. The stanchion must be centered on the center line.

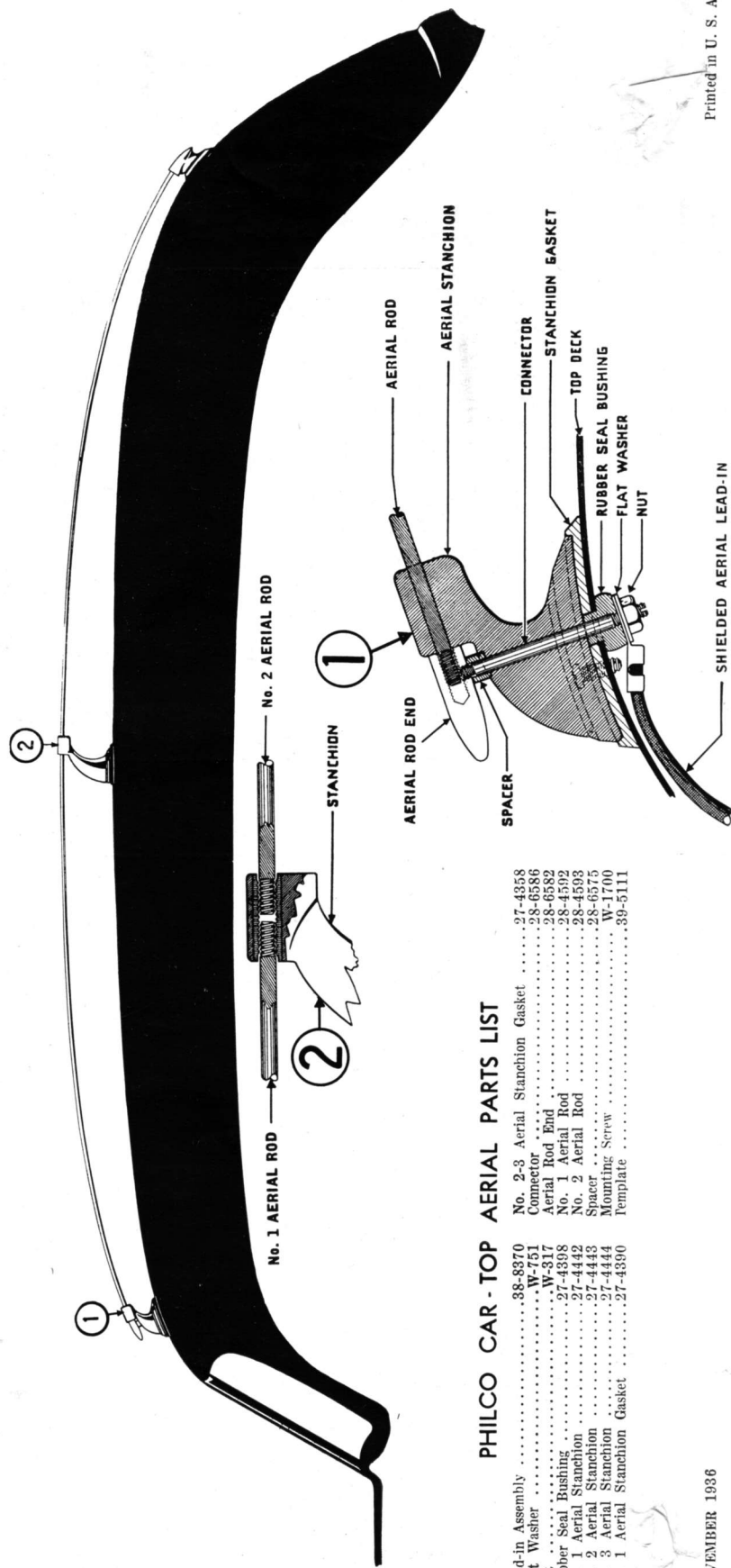
6. Drill the six mounting holes with a 1/8" drill and then drill a 3/8" hole for the aerial connector as marked for the front stanchion. Place a short piece of tubing or fibre over the drills so that no more than 1/2" of the drill can penetrate the roof.

7. Apply the rubber stanchion gaskets to the base of each stanchion, cementing them in place.

8. Coat the sheet metal screws with cement and then fasten the three stanchions securely in place.

9. Drop the headlining inside the front of the car and assemble the aerial connector and lead-in as detailed in the cut.

10. Dress the lead-in across the front of the car and down one of the windshield pillars, preferably the one without the dome light lead. Terminate it at the Receiver location.



PHILCO CAR - TOP AERIAL PARTS LIST

Lead-in Assembly	38-8370	No. 2-3 Aerial Stanchion Gasket	27-4358
Flat Washer	W-751	Connector	28-6386
Nut	W-317	Aerial Rod End	28-6382
Rubber Seal Bushing	27-4398	No. 1 Aerial Rod	28-4502
No. 1 Aerial Stanchion	27-4442	No. 2 Aerial Rod	28-4503
No. 2 Aerial Stanchion	27-4443	Spacer	28-6375
No. 3 Aerial Stanchion	27-4444	Mounting Screw	W-1700
No. 1 Aerial Stanchion Gasket	27-4390	Template	39-5111