

*...a new Radio invention!
...as miraculous
as Radio itself!*

**PHILCO
MYSTERY
CONTROL**



Just picture this: With the radio in your living room, you carry the small separate Mystery Control Unit with you in one hand wherever you may wish in your home—to any room upstairs or down, even to the porch or lawn outside. And with a mere flick of your finger on the Mystery Control dial you operate the *radio in your living room!* You tune in your choice of eight favorite stations, you raise or lower the volume, you even turn the radio off, *without moving a step!*

*... and all this
without wires or connections of any
kind to the Radio or anything else!*

*It's incredible! It's uncanny!
That's why it's called Mystery Control*



PHILCO 116RX MYSTERY CONTROL RADIO

PHILCO MYSTERY CONTROL . . .

the greatest invention since radio itself!

The radio world has dreamed fondly of remote control for many years, fascinated by the hope that radio engineers would some day find the way to eliminate the annoyance and inconvenience of radio tuning. Haven't you, yourself, frequently felt that annoyance when you have had to rise from your chair in the living room, or leave the dining room table in the midst of your meal, or pace from all corners of your home to change a station or tune out some unwanted

program? Haven't you wished for some means to eliminate the *physical interruptions* of radio tuning?

With Philco Mystery Control, Philco engineers at last have solved the problem. And they have solved it in a manner so ingenious, so incredible, so uncanny that it goes far beyond what anyone had hoped for!

It would have been enough to tune without cumbersome wiring, from only a single chair in the living room. But Philco



Tune your new Philco 116RX from any place in the living room



Carry Philco Mystery Control upstairs or down



Switch off your Philco just before you drop off to sleep

Mystery Control lets you tune from *any* chair, at any time that suits your fancy.

It would have been enough to tune only from the living room, but Philco Mystery Control lets you tune, miraculously, from the dining room, kitchen, bedroom or any room in your house.

It would have been enough, for you who live in two-story homes, to tune from the first floor alone. But Philco Mystery Control lets you tune from upstairs as well as downstairs or from your recreation room in the basement.

It would have been enough to tune from inside the house. But Philco Mystery Control lets you tune the radio in your living room from *outside*, on your porch or lawn . . . any place within enjoyable listening distance. All this has

been made possible because there are *no wires, no cords, no plug-in connections between Mystery Control and the radio, nor to an electrical outlet nor to anything else.* It is truly unbelievable! When you see it, you will say, as all who have seen it have said, "*It's magic, like waving a wand, like rubbing Aladdin's lamp.*" It's mystifying indeed! That's why it's called —*Mystery Control!*

But, while Mystery Control is a fascinating, thrilling invention, its true importance lies in the new comfort and convenience it brings to radio tuning. It revolutionizes all former habits of radio listening!



Tune in daytime programs without leaving the kitchen



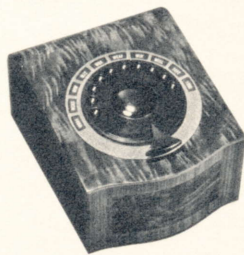
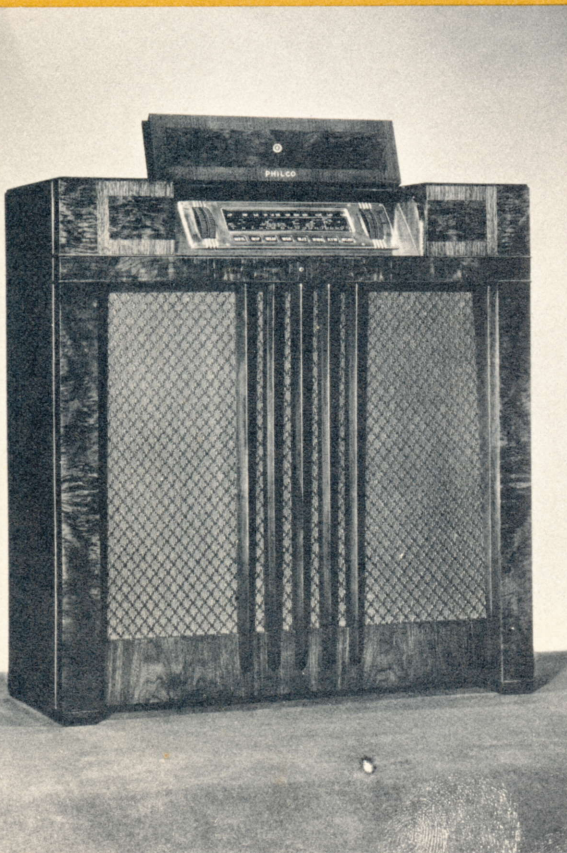
Select your dinner music without getting up from the table



Choose your favorite programs while resting on the porch

A few facts about Philco Mystery Control

Each Philco Mystery Control Model consists of the radio itself and its companion Mystery Control Unit. They are tuned and synchronized to each other at the time of manufacture. Thus the Mystery Control Unit operates only the radio with which it is sold. Every Philco Mystery Control Model is therefore safe from interference with any other Mystery Control Model even though they may be in adjoining homes or apartments.

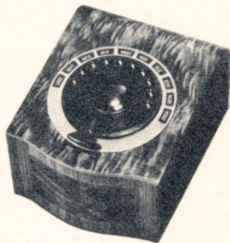


PHILCO MODEL 116RX

The numeral "116," like "Sterling" in silver, has become famous as the hall-mark of quality throughout the radio world. For 1939, it's the Philco 116RX. In addition to Mystery Control, it brings you every new improvement in tone, performance, and beauty. The cabinet strikes a new note of simplicity and good taste, a piece of furniture that will harmonize with any interior and enhance its beauty. It is built of highly figured Walnut woods in contrasting grains. A handsome folding lid encloses the instrument panel. Among the features of the radio are the new Balanced Field Cathedral Speaker, Inclined Sounding Board of enlarged area, 14 Philco High-Efficiency Tubes, new Streamline Dial, Finger Tip Controls. Tuning ranges cover all Standard American Broadcasts, Day and Night Foreign and American Short-Wave stations, State and City Police Calls, Day and Night Aviation, Ship, Day and Night First and Second Class Amateur bands—all that's interesting in the air.

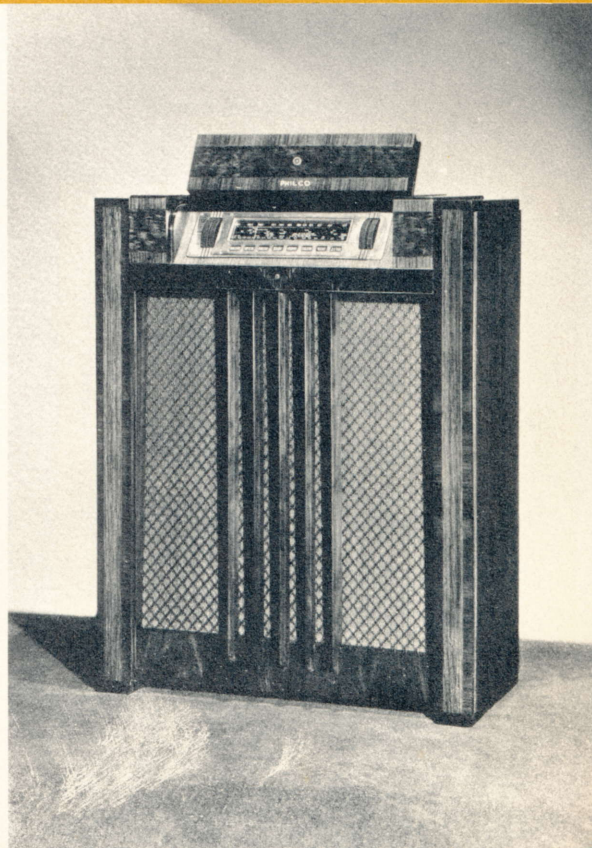
While the chief advantage of Philco Mystery Control is the ability to operate the radio by remote control, without wires or connections, from any room in the house, the radio may also be operated in the regular way. Eight favorite stations may be tuned with the Mystery Control Unit, but all stations within the range of the radio may be tuned with the Finger Tip Controls on the streamline instrument panel.

Philco Mystery Control models are as superbly beautiful in design and finish as they are astonishing in performance. The Mystery Control Unit itself is housed in a light, compact case, only 5½" high x 7¼" wide x 9⅛" long, of beautifully figured butt and sliced Walnut. The radio cabinet, distinctive in its simplicity and grace, is also built of costly walnut veneers, as carefully finished as a fine grand piano.



PHILCO MODEL 55RX

In this exquisitely beautiful cabinet, Philco Mystery Control comes to you at a truly moderate price. A cabinet of beautifully figured Walnut woods with that distinguished simplicity of design which the good taste of America's homemakers has demanded. In addition to Mystery Control, Philco 55RX brings you glorious improvements in tone quality and freedom from distortion at any volume, thanks to the new type Philco Balanced Field Speaker and Inclined Sounding Board. A handsome folding lid covers the Inclined Control Panel which, when lifted, discloses a beautiful streamline dial and new Finger Tip Disc Controls for manual operation of the radio. An 11-Tube Superheterodyne that covers all Standard American Broadcasts and State Police Calls.



SOME QUESTIONS AND ANSWERS ABOUT PHILCO MYSTERY CONTROL

When you carry the Mystery Control Unit from one room to another, don't you have to plug it in to a wall socket?

Positively not! It has no wires, no cords, no plug-in connections of any kind to anything.

And you say that without wire connections of any kind to radio or electricity, that Mystery Control Unit can change stations on the radio, adjust volume and even turn it off?

Precisely! It's unbelievable. It's mystifying. That's why it's called Mystery Control.

If a person stands directly between the Mystery Control Unit and the radio, will that interfere with its operation?

Again, no! In fact, you can stand with your back to the radio and Mystery Control will operate it perfectly.

Can you really take the Mystery Control Unit outdoors and control the radio inside the house?

That's right! From outside on the porch or lawn or back yard.

If the people next door have a Mystery Control radio, will it interfere with the one in my home?

Absolutely not! Each Mystery Control Unit is tuned with its companion set. Your unit will operate your set, theirs will operate their set. But they will have absolutely no effect upon each other.

How far away from the radio will Mystery Control function?

Any place within enjoyable listening distance.

Suppose the Mystery Control Unit is in the kitchen or bedroom, do you have to keep the door open to control the radio in the living room?

No indeed! Mystery Control operates right through closed doors, through walls, windows or ceilings.

Do you mean to say there's no wire connection between the Mystery Control Unit and the radio set?

That's exactly what we mean. No wires nor connections of any kind to the radio!

Can you adjust the volume as well as change stations with Mystery Control?

Yes, and that's very important. You can make the program louder or softer at will. And you can also turn the radio off without going near it!

Must I hold the Mystery Control Unit in my hand to operate it?

Of course not. You simply pick it up like a book and carry it wherever you wish. It's so light that you can carry it easily in one hand. And then you place it wherever it will be most convenient—on the arm of a chair, on any stand or end table, on a dining room table or cupboard. And tune your favorite stations as simply as you operate a telephone dial!

Philco Mystery Control is also available in the Model 116PCX—a Phonograph with Philco. Its many features include the Capehart Record Changer which changes

ten 10" or 12" records without attention. There is a wide variety of other Philcos for every purse and purpose—consoles, table models, auto radios and radios for unwired homes.