

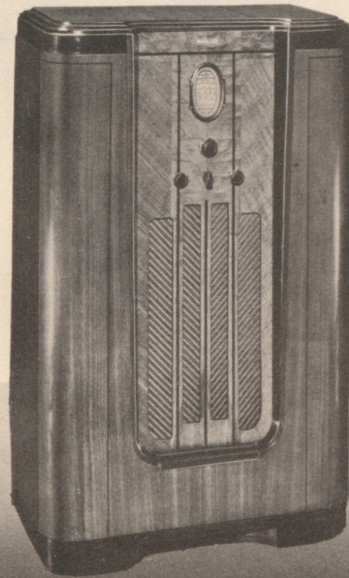
PHILCO INCLINED SOUNDING BOARD MODELS

All the Philco models illustrated on this page feature the famous Philco Inclined Sounding Board . . . the greatest single advance in scientific sound reproduction. Through its marvels you enjoy a truly life-like reproduction of speech and music.

A. The slope directs the high notes (treble) up to your ears,

preserving the sparkle and brilliance of the original. B. The large sounding board area faithfully reproduces the low notes (bass), thus preserving the depth and sonority of the original.

RESULT: Clear, life-like reception, as if the artists were present "in person."



PHILCO 665X—American and Foreign Receiver

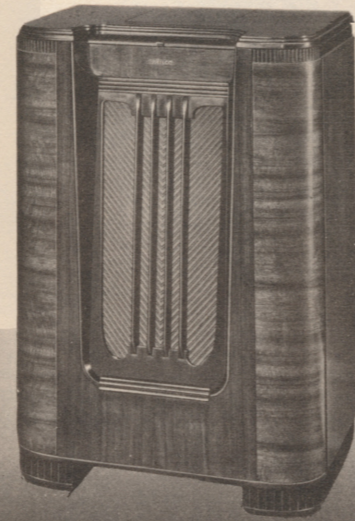
Super "Class-A" Power-Driven Audio System—10 watts output . . . Shadow Tuning . . . Glowing Arrow Wave-Band Indicator . . . 10 Philco High-Efficiency Tubes . . . Automatic Bass Compensation . . . Noise-Excluding Signal Amplifier . . . *Built-in* Aerial-Tuning System.



PHILCO 655X—American and Foreign Receiver

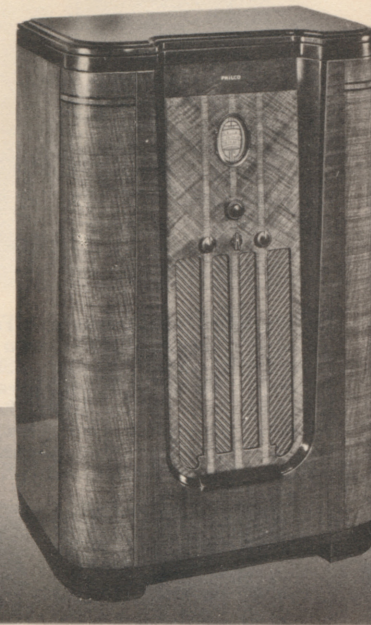
Super "Class-A" Power-Driven Audio System—10 watts output . . . Shadow Tuning . . . Glowing Arrow Wave-Band Indicator . . . 8 Philco High-Efficiency Tubes . . . Automatic Bass Compensation . . . Noise-Excluding Signal Amplifier . . . *Built-in* Aerial-Tuning System.

In the same cabinet are these American and Foreign Receivers: 641X for Direct Current; 643X for Battery operation; 651X for AC or DC (115 volts).



PHILCO 655MX—American and Foreign Receiver

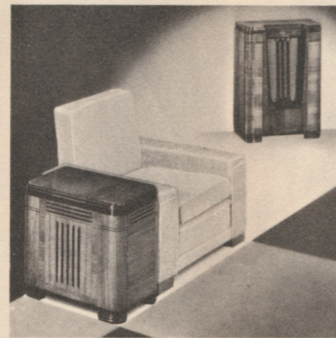
Super "Class-A" Power-Driven Audio System—10 watts output . . . Concealed instrument panel under lid . . . Shadow Tuning . . . Glowing Arrow Wave-Band Indicator . . . 8 Philco High-Efficiency Tubes . . . Automatic Bass Compensation . . . Noise-Excluding Signal Amplifier . . . *Built-in* Aerial-Tuning System.



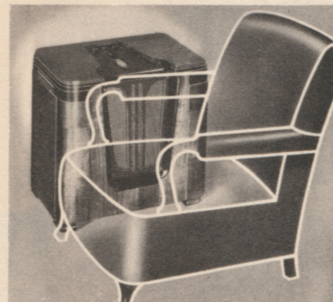
PHILCO 655PX—American and Foreign Radio-Phonograph

Philco engineers have combined the 655 chassis, described above, with an electric pick-up and phonograph motor to make this a superb radio-phonograph. Records are reproduced with amazing fidelity by the Super "Class-A" Audio System and the Philco Inclined Sounding Board.

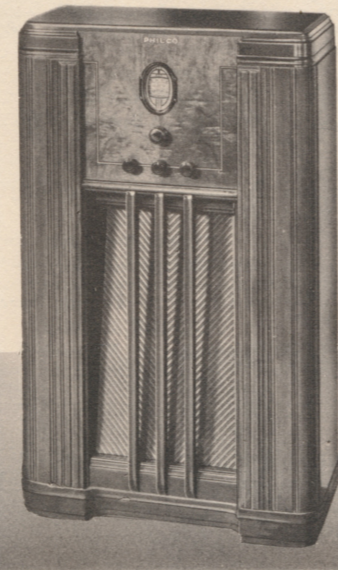
CONVENIENCE "X" MODELS



Philco 655RX—American and Foreign—Change stations . . . adjust volume . . . control tone without stirring from your chair! Philco Remote Control provides the ultimate in convenience plus all the glorious beauty of Philco tone. Same chassis and coverage as other 655 models. *Built-in* Aerial-Tuning System.



Philco 635CSX—American and Foreign—A Chair-side Philco with Inclined Sounding Board and the 6-tube 635 chassis, providing the same coverage of broadcast and short-wave bands as the 635X. *Built-in* Aerial-Tuning System.



PHILCO 635X American and Foreign Receiver

Super-Pentode Audio System—5 watts output . . . Shadow Tuning . . . Glowing Arrow Wave-Band Indicator . . . 6 Philco High-Efficiency Tubes . . . Automatic Bass Compensation . . . Noise-Excluding Signal Amplifier . . . *Built-in* Aerial-Tuning System.

BROADCAST BAND COVERAGE

PHILCOS 665-655-635

Daytime and Night-time Foreign and American Short-Wave Broadcasts . . . State and Municipal Police Calls . . . Daytime and Night-time Aircraft, Ship and Amateur Bands . . . Standard American Broadcasts. In addition Philco 665 covers U. S. Weather Reports.

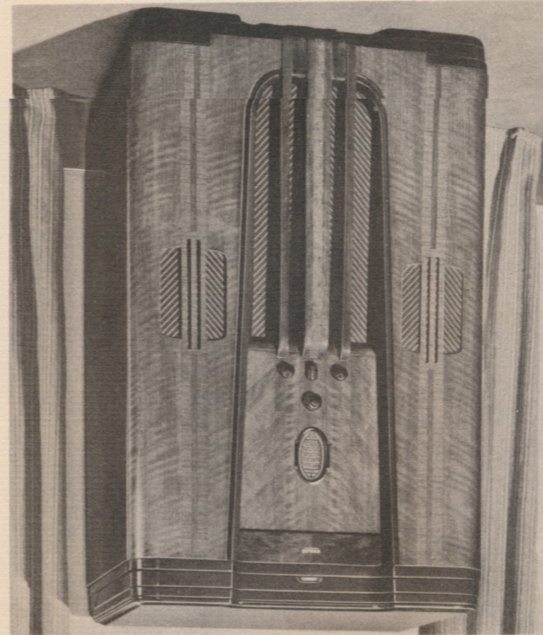
PROGRAM CONTROL

PHILCOS 665-655 PHILCO 635

A. Mellow—For American Stations
B. Brilliant—For American Stations
C. Normal—For Foreign Stations
D. Noise-Reducing—For Foreign Stations

A. Mellow—For American Reception
B. Brilliant—For American Reception
C. Noise-Reducing—For Foreign Reception

PHILCO 116PX—High Fidelity American



The finest of radio-phonographs! The same powerful chassis as in the 116X not only provides brilliant Foreign and American reception, but it is scientifically combined with a High Fidelity Electric Phonograph and an automatic record changer of the finest type. Standard or long-playing records are perfectly reproduced through the Philco High Fidelity Audio System and the famous Inclined Sounding Board. Radio Receiver Controls regulate Volume and Tone of Phonograph.

IN THESE brilliant new High Fidelity receivers, Philco gives you startling new fidelity of tone—plus thrilling American and Foreign reception! Here is absolute realism in radio—brought to you through many new and important balanced features.

★ The new Philco High Fidelity Audio System, with its vastly extended musical range, gives you the most faithful, life-like reproduction ever achieved in radio. All musical instruments, all voices, are reproduced with the overtones that identify and distinguish them. Its power output covers the full range from the faintest whisper to the thunderous finale of the greatest symphony orchestra.

★ Acoustic Clarifiers automatically eliminate unpleasant barrel-like boom, resulting in clarity of tone beyond all previous experience. The specially designed Two-in-One High Fidelity Speaker reproduces high treble notes and low bass notes without distortion even at auditorium volume.

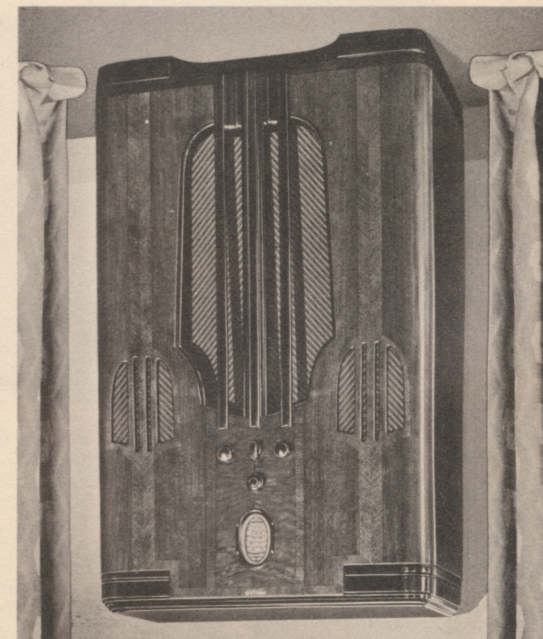
★ The large area and slope of the famous Inclined Sounding Board preserve, and project up to ear level, all the extended musical range and clarity of tone created by the Philco High Fidelity Audio System and Acoustic Clarifiers. Scientifically designed sound diffusers spread the most delicate overtones throughout the room.

BROADCAST BAND COVERAGE

PHILCOS 116X and 116PX

Cover every broadcast service in the air—Daytime Foreign and American Short-Wave Broadcasts . . . Night-time Foreign and American Short-Wave Broadcasts . . . State and Municipal Police Calls . . . Daytime and Night-time Aircraft, Ship and Amateur Bands . . . Standard American Broadcasts . . . U. S. Weather Reports.

PHILCO 116X—High Fidelity



High Fidelity Audio System—15 watts output . . . Shadow Tuning . . . Glowing Arrow Wave-Band Indicator . . . 11 Philco High-Efficiency Tubes . . . Automatic Bass Compensation . . . Noise-Excluding Signal Amplifier . . . Triple Selector System . . . *Built-in* Aerial-Tuning System. Program Control covers: A. Music (Mellow)—American Stations B. Music (Brilliant)—American Stations C. Speech—American Stations D. Normal—Foreign Stations E. Noise-Reducing—Foreign Stations

PHILCO HIGH FIDELITY RADIO

Only PHILCO has the built-in Aerial-Tuning System Which Doubles the Foreign Stations You Can Get and Enjoy!

Every Foreign and American Philco has a *built-in* Aerial-Tuning System as an integral part of the set. As you turn the knob to switch from one wave-band to another, it automatically tunes the all-wave aerial with perfect exactness to the particular American or Foreign broadcast band you want. Result: many more stations and more power on each station.

Foreign reception at the fullest! An Aerial-Tuning System so skillfully engineered that it carries the picked-up foreign station signal into the radio circuits without the slightest degree of loss . . . giving you foreign reception with amazing volume, clarity and realism.

It reduces to a minimum the noises from man-made static and local electrical interference which so often spoil foreign reception.

Through its great increase of signal pick-up, this new, exclusive Philco *built-in* Aerial-Tuning System also reduces fading to an absolute minimum.

And because of scientific design and selected, tested material, this system retains its efficiency under any and all weather conditions. Not an accessory . . . not an extra . . . but an integral part of the set. Only Philco has it!

PHILCO 680X SUPER HIGH FIDELITY RADIO

The utmost in radio performance and tonal fidelity . . . the finest radio in all the world today! Ask your Philco dealer for the special brochure describing this superb Musical Instrument.

NEW PHILCO AUTO RADIOS

Regardless of make, model, or year, there's a new Philco auto radio for your car. It tucks snugly away with the convenient, "wide-vision" control unit mounted in or on the instrument panel. Operates with motor "off" or at any speed over any road. There are five new models—all are Superheterodynes with multi-function Philco High-Efficiency Auto Radio Tubes. Exclusively approved by 29 great motor-car manufacturers. Easily installed in your present car, and later, just as easily transferred to your new car.

PHILCO BATTERY-OPERATED SETS

For unwired homes Philco offers a complete new line of the finest battery-operated radios ever built, including several models for 6-volt battery operation. These models require no "B" or "C" batteries. Battery-operated Philcos to cover every broadcast service in the air, including thrilling programs from foreign countries—also models for American broadcasts only. Marvelous performance, superb tone! The power units are scientifically designed to provide the lowest cost battery set operation in all radio. Illustrated in this folder you will find the many different cabinets in which battery-operated Philcos are obtainable.

PHILCO HIGH-EFFICIENCY TUBES

Philco High-Efficiency Tubes improve the performance of ANY radio! Replace your old, worn-out tubes with new Philco Tubes. They consume less current, are more efficient, and give exceptionally long service. You will be amazed with the added radio enjoyment they provide—and you will be equally surprised at their small cost. Bring in your old tubes for free check-up on our modern tube-testing equipment.

The NEW PHILCO

A musical instrument of quality



\$20 to \$600

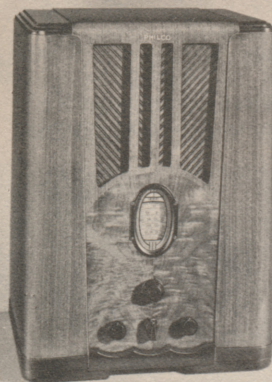
Available on the Convenient PHILCO-Commercial Credit Time Payment Plan

THERE'S A

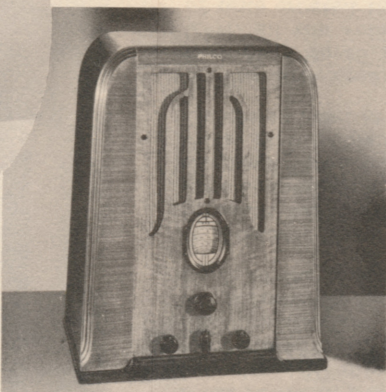
PHILCO FOR EVERY PURSE AND PURPOSE \$20 TO \$600

AVAILABLE ON TIME PAYMENTS

BABY GRANDS



Philco 116B—American and Foreign—Super "Class-A" Power-Driven Audio System—10 watts output . . . Shadow Tuning . . . Glowing Arrow Wave-Band Indicator . . . 11 Philco High-Efficiency Tubes . . . Automatic Bass Compensation . . . Noise-Excluding Signal Amplifier . . . Triple Selector System . . . *Built-in Aerial-Tuning System.*



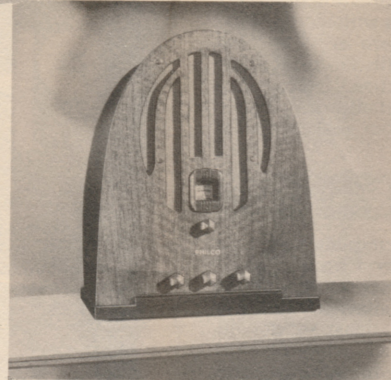
Philco 655B—American and Foreign—Super "Class-A" Power-Driven Audio System—10 watts output . . . Shadow Tuning . . . Glowing Arrow Wave-Band Indicator . . . 8 Philco High-Efficiency Tubes . . . Automatic Bass Compensation . . . Noise-Excluding Signal Amplifier . . . *Built-in Aerial-Tuning System.*

In the same cabinet are these American and Foreign Receivers: **645B** (with the 7-tube 645 chassis); **651B** for AC or DC (115 volts); **641B** for Direct Current; **643B** for Battery operation.



Philco 610B—American and Foreign—Pentode Audio System—3 watts output . . . Glowing Arrow Wave-Band Indicator . . . 5 Philco High-Efficiency Tubes . . . *Built-in Aerial-Tuning System.*

In the same cabinet is **611B** American and Foreign for operation on AC or DC (115 volts).



Philco 625B—American and Foreign—Pentode Audio System—3 watts output . . . Glowing Arrow Wave-Band Indicator . . . 6 Philco High-Efficiency Tubes . . . Automatic Bass Compensation . . . Noise-Excluding Signal Amplifier . . . *Built-in Aerial-Tuning System.*

In the same cabinet are these American and Foreign Receivers: **623B** for Battery operation; **624B** for 6-volt Battery operation (No "B" or "C" Batteries required); **642B** for 32-volt DC operation.

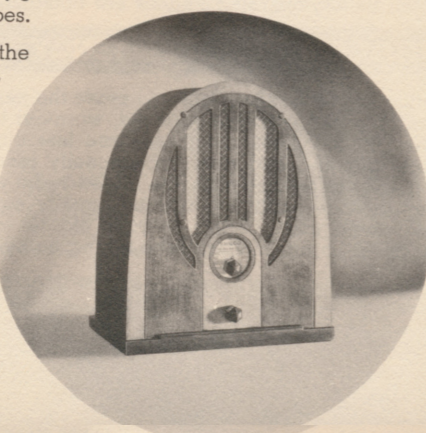


Philco 89B—American Receiver—Pentode Audio System—3 watts output . . . 6 Philco High-Efficiency Tubes . . . Noise-Excluding Signal Amplifier.

Philco 60B—American Receiver—Pentode Audio System—3 watts output . . . 5 Philco High-Efficiency Tubes.

In the same cabinet is the **38B** for Battery operation.

Philco 84B—American Receiver—Pentode Audio System . . . 4 Philco High-Efficiency Tubes.



Philco 635B—American and Foreign—Super-Pentode Audio System—5 watts output . . . Shadow Tuning . . . Glowing Arrow Wave-Band Indicator . . . 6 Philco High-Efficiency Tubes . . . Automatic Bass Compensation . . . Noise-Excluding Signal Amplifier . . . *Built-in Aerial-Tuning System.*



Philco 645K—American and Foreign—Push-Pull Audio System—7 watts output . . . Shadow Tuning . . . Glowing Arrow Wave-Band Indicator . . . 7 Philco High-Efficiency Tubes . . . Automatic Bass Compensation . . . Noise-Excluding Signal Amplifier . . . *Built-in Aerial-Tuning System.*

In the same cabinet are these American and Foreign Receivers: **623K** for Battery operation; **624K** for 6-volt Battery operation (No "B" or "C" Batteries required).

BROADCAST BAND COVERAGE OF PHILCOS SHOWN ON THIS PAGE

PHILCO 116 Covers every broadcast service in the air—Daytime Foreign and American Short-Wave Broadcasts . . . Night-time Foreign and American Short-Wave Broadcasts . . . State and Municipal Police Calls . . . Daytime and Night-time Aircraft, Ship and Amateur Bands . . . Standard American Broadcasts . . . U. S. Weather Reports.	PHILCO 665 Daytime and Night-time Foreign and American Short-Wave Broadcasts . . . State and Municipal Police Calls . . . Daytime Aircraft, Ship and Amateur Bands . . . Standard American Broadcasts . . . U. S. Weather Reports.
PHILCOS 655-645-635-625 Daytime and Night-time Foreign and American Short-Wave Broadcasts . . . State and Municipal Police Calls . . . Daytime and Night-time Aircraft, Ship and Amateur Bands . . . Standard American Broadcasts.	PHILCO 610 Daytime and Night-time Foreign and American Short-Wave Broadcasts . . . State and Municipal Police Calls . . . Daytime Aircraft, Ship and Amateur Bands . . . Standard American Broadcasts.
PHILCOS 89-60 Standard American Broadcasts . . . State and Municipal Police Calls . . . Many Aircraft and Amateur Stations.	PHILCOS 602C-600C-84B Standard American Broadcasts . . . State Police and some Municipal Police Calls.

Closely Related to Broadcast Coverage are Program Control and Tone Control for Adjusting the Radio to Receive Each Broadcast at Its Best

PHILCO 116 A. Music (Mellow)—American Stations. B. Music (Brilliant)—American Stations. C. Speech—American Stations. D. Normal—Foreign Stations. E. Noise-Reducing—Foreign Stations.	PHILCOS 665-655-645 A. Mellow—American Stations. B. Brilliant—American Stations. C. Normal—Foreign Stations. D. Noise-Reducing—Foreign Stations.	PHILCO 635-625 A. Mellow—American Reception. B. Brilliant—American Reception. C. Noise-Reducing—Foreign Reception. PHILCO 610-89-60 A. Brilliant—Nearby Reception. B. Noise-Reducing—Distant Reception.
--	---	---

NO SINGLE FEATURE of any radio is important unless all of the features have been designed to match each other to achieve a Balanced Unit Whole. It is this exact matching and balancing of each feature with all others which distinguishes Philco from an ordinary radio and makes it truly "A Musical Instrument of Quality."

An excellent example of this scientific balancing of each unit with all others is the Philco Balanced Super-heterodyne Circuit—used in all Philco radios. Philco engineers have raised the performance of this circuit to new heights of perfection.

The circuits and tubes are metal shielded throughout. Patented live rubber condenser mounting eliminates microphonic "squeals." Perfect alignment of all circuits is assured through assembly on rigid, rust-proofed steel.

In addition, every Philco is built to conform to the Underwriters' Safety Standards and has a built-in Filter which prevents radiated interference in other sets.

By scientifically combining correctly chosen types of Philco High-Efficiency Tubes, Philco achieves power and selectivity impossible with even a greater number of less efficient tubes.

Another important feature on many Philcos is Shadow Tuning. For perfect tone you must have perfect tuning. Shadow Tuning shows you visually when each station is tuned in perfectly.

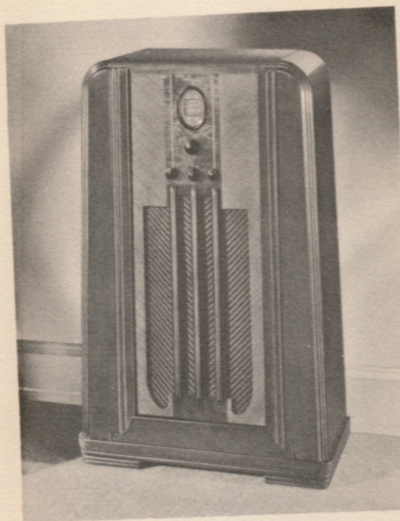
All American and Foreign Philcos are equipped with the Philco Precision Radio Dial. The easiest and most precise tuning in all radio! The two-speed Station Selectors are designed for easy but accurate tuning of American or Foreign stations. The Fast Speed Drive permits swift turning; the Slow Speed is for fine tuning of short-wave stations.

All American and Foreign Philcos have the Glowing Arrow Wave-Band Indicator—the glowing arrow shows the wave-band in use and also serves as a station finder.

The Noise-Excluding Signal Amplifier automatically amplifies the station signal while rejecting interference.

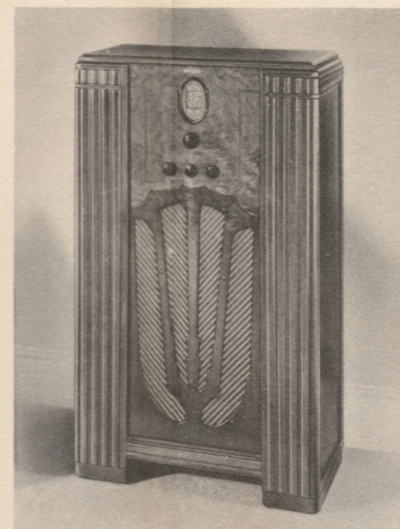
Philco Electro-Dynamic Speakers, with the exclusive Philco Moving Coil, give faithful response from bass to treble. Fading of distant stations and blasting of local stations are counteracted by Full Automatic Volume Control—a feature of all Philcos having five or more tubes.

FLOOR CABINETS



Philco 625J—American and Foreign—Pentode Audio System—3 watts output . . . Glowing Arrow Wave-Band Indicator . . . 6 Philco High-Efficiency Tubes . . . Automatic Bass Compensation . . . Noise-Excluding Signal Amplifier . . . *Built-in Aerial-Tuning System.*

In the same cabinet is the **611J** American and Foreign for AC or DC (115 volts).

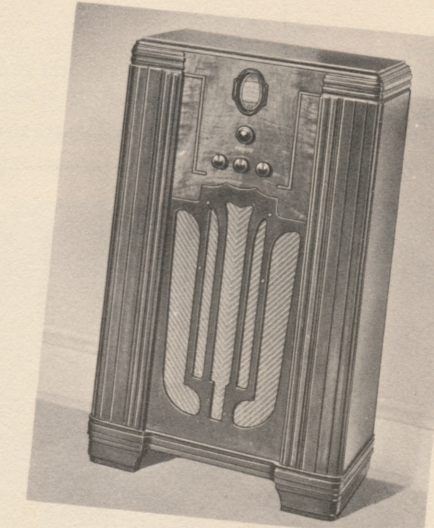


Philco 625S—American and Foreign—Pentode Audio System—3 watts output . . . Glowing Arrow Wave-Band Indicator . . . 6 Philco High-Efficiency Tubes . . . Automatic Bass Compensation . . . Noise-Excluding Signal Amplifier . . . *Built-in Aerial-Tuning System.*



Philco 610F—American and Foreign—Pentode Audio System—3 watts output . . . Glowing Arrow Wave-Band Indicator . . . 5 Philco High-Efficiency Tubes . . . *Built-in Aerial-Tuning System.*

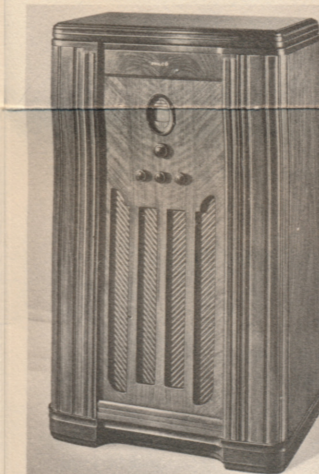
In the same cabinet are: **60F** for American Reception only; **38F** American Reception only, for Battery operation.



Philco 89F—American Receiver—Pentode Audio System—3 watts output . . . 6 Philco High-Efficiency Tubes . . . Noise-Excluding Signal Amplifier.

In the same cabinet are: **623F** American and Foreign, for Battery operation; **624F** American and Foreign, for 6-volt Battery operation (No "B" or "C" Batteries required); **642F** American and Foreign, for 32-volt DC operation.

RADIO-PHONOGRAPHS



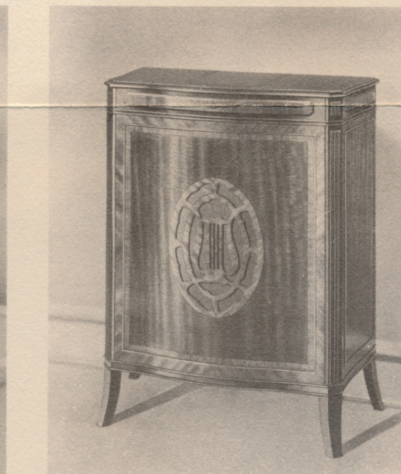
Philco 635PF—American and Foreign Radio-Phonograph . . . Electric pick-up and phonograph motor of the highest quality . . . Super-Pentode Audio System—5 watts output . . . Shadow Tuning . . . Glowing Arrow Wave-Band Indicator . . . 6 Philco High-Efficiency Tubes . . . Automatic Bass Compensation . . . Noise-Excluding Signal Amplifier . . . *Built-in Aerial-Tuning System.*

In the same cabinet is **610PF** American and Foreign Radio-Phonograph with chassis similar to 610F.

ALL-PERIOD FURNITURE MODELS

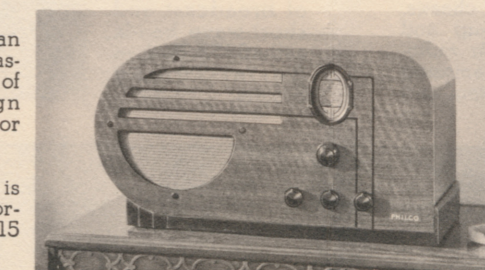


Philco 665L—American and Foreign—Super "Class-A" Power-Driven Audio System—10 watts output . . . Shadow Tuning . . . Glowing Arrow Wave-Band Indicator . . . 10 Philco High-Efficiency Tubes . . . Automatic Bass Compensation . . . Noise-Excluding Signal Amplifier . . . *Built-in Aerial-Tuning System.*



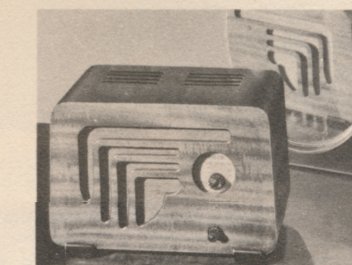
Philco 655H—American and Foreign—Super "Class-A" Power-Driven Audio System—10 watts output . . . Shadow Tuning . . . Glowing Arrow Wave-Band Indicator . . . 8 Philco High-Efficiency Tubes . . . Automatic Bass Compensation . . . Noise-Excluding Signal Amplifier . . . *Built-in Aerial-Tuning System.*

COMPACT MODELS



Philco 610T—American and Foreign. Same chassis as 610F. Cabinet of contemporary design convenient for table or bookshelf.

In the same cabinet is **611T** American and Foreign. For AC or DC (115 volts).



Philco 602C—American Receiver—Pentode Audio System . . . 5 Philco High-Efficiency Tubes. For AC or DC (115 volts). Cabinet finished on all sides; Speaker grilles at front and back.

In the same cabinet is **600C** for 115-volt AC operation.

• • • A Musical Instrument of Quality

A Musical Instrument of Quality • • •