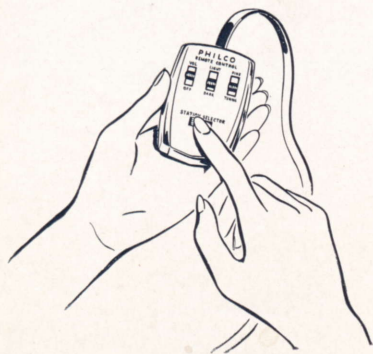


# Philco 2138

20-INCH REMOTE CONTROL TELEVISION CONSOLE



***Full Remote Control television with  
giant-size 20-inch rectangular picture tube!***

## *Philco 2136*

**Same BIG picture, features, and  
cabinet, but without Remote Control**



# Philco 2138 SUMMARY OF FEATURES

## Full, Complete Remote Control

Now, you can operate your television set from your easy chair! Yes, turn the set on or off, change stations, adjust picture and sound, *all without rising*. Control case is compact . . . easy even for a child to operate! Connecting ribbon automatically rewinds in cabinet when not in use, or may be placed out of sight under the rug. Not partial, but *full Remote Control*. Only Philco has it!

## 215 Sq. Inch Picture on 20" Rectangular Tube

New rectangular shape preserves full area of the picture. Gray filter face for better contrast in illuminated rooms.

## Extra Super-Power for "Fringe" Locations

Fullest sensitivity and selectivity. Double-action synchronizing circuit holds the picture clear and steady . . . rejects interference. *Amplified* Automatic Gain Control compensates for signal fluctuations and checks "airplane flutter". *Even in the most difficult television locations known* achieves unequalled reception and picture quality.

## Electronic Built-In Aerial System

Repeated field tests prove that it *outperforms all others by as much as 3 to 1*. The only Built-In Aerial that can be tuned and matched to all 12 television channels.

## Custom-Built High Gain Duplex Chassis

Exclusive Philco divided chassis plus *extra* tubes, *extra* power, *extra* "drive". *Unmatched custom-built quality!*

## Automatic Scanning System with the Balanced Beam (U. S. Patent Pending)

Sweeping advance in picture quality! Gives *uniform focus* over the entire face of the screen. No more blurred edges or smeared images! Only Philco has it!

## Philco High Sensitivity Tuner

The newest advance in a television tuner, with *extra* sensitivity for all 12 television channels. Sound adjusts automatically when picture is correctly tuned.

## Sharpest, Clearest Pictures

New Philco circuit delivers a higher voltage to the picture tube. This means brighter pictures with better contrast . . . utmost realism!

## Static-Free FM Sound! Variable Tone Control!

Twelve-inch PM Speaker. Automatic Volume Control. Continuously variable tone control, treble to bass.

## Full View, Easily Accessible Controls

In addition to Remote Control, set may also be operated in the normal manner. All controls *easily* accessible.

## 21 Philco Tubes, Plus 4 Rectifiers

Including special High Gain tubes for extreme sensitivity!

## Charming Chippendale Console

Dignity and luxury in the true Chippendale tradition. Matched Swirly Crotch Mahogany veneers with Boxwood inlay effect. 38 $\frac{1}{16}$ " high, 25 $\frac{1}{8}$ " wide, 24 $\frac{1}{8}$ " deep.

110-125 Volts, 60 Cycles, AC . . . Underwriters' Laboratories Approved . . . "No Glare" Optical System . . . Illuminated Station Selector . . . Provision for UHF Tuner

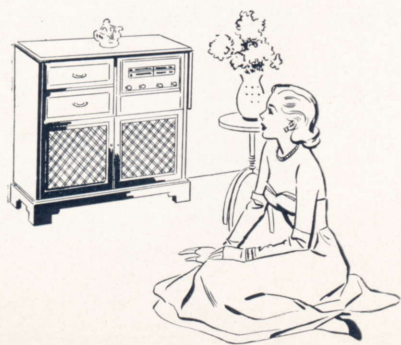
## PHILCO 2136

Same features and cabinet without Remote Control.





*Philco 1734* RADIO-PHONOGRAPH



***Greatest fidelity of tone ever achieved  
from records of all sizes, all speeds  
... FM-AM at its best ...  
a masterpiece of fine cabinetry.***



# Philco 1734

## SUMMARY OF FEATURES

### Philco 3-Speed Automatic Record Changer

Plays all records, all sizes, all 3 speeds automatically with a single tone arm. Handles twelve 10-inch or ten 12-inch 78 RPM records; up to fourteen 33 1/2 RPM in all sizes; up to fourteen 45 RPM with Adapter Discs and Non-Slip Driver. Simple, precision-built Push Off Mechanism (*Patent Pending*), easily adjusted to all size records, *Patented* Philco Self Adjusting Spindle provides full clearance for unloading all type records without damage. *Up to 5 hours of continuous music!*

### Philco Super-Tone Reproducer

Plays all records, old or new, with better tone than recorded music has ever been played before. All records, including 78 RPM, are caressed with just 1/5 of an ounce of pressure. Tracks perfectly even in finest grooves and loudest passages. Wider tonal range preserves highs and lows in scientific balance.

### Philco Super-Sensitive FM System

Improved circuit delivers superior performance wherever a usable FM signal is available . . . clear reception close to a station or out on the "fringe".

### AC Superheterodyne Circuit

Sensitive, selective. Operates on AC current, using a full power transformer for maximum performance.

### Tuned R. F. Stage with 3-Gang Condenser on AM and FM

Costly circuit designs achieve great sensitivity, clean, sharp station separation and maximum reduction of cross talk and interference, even on crowded channels . . . *both* AM and FM.

### Combined Bass Compensation and Tone Control

Preferred tone can be selected and bass notes brought up even as volume is turned down . . . giving low and high notes in true proportion at any level.

### Built-In Dual Aerial System

Exclusive Philco Line Cord Antenna for FM gives greater efficiency and higher signal gain than other inside aerials. Low impedance loop for stepped up gain, less interference on AM.

### 12-Inch Cathedral High Fidelity Speaker

Specially developed by Philco . . . delivers thrilling speaker performance . . . natural, life-like, faithful. Reproduces a high fidelity tonal range in clear, brilliant tones and overtones.

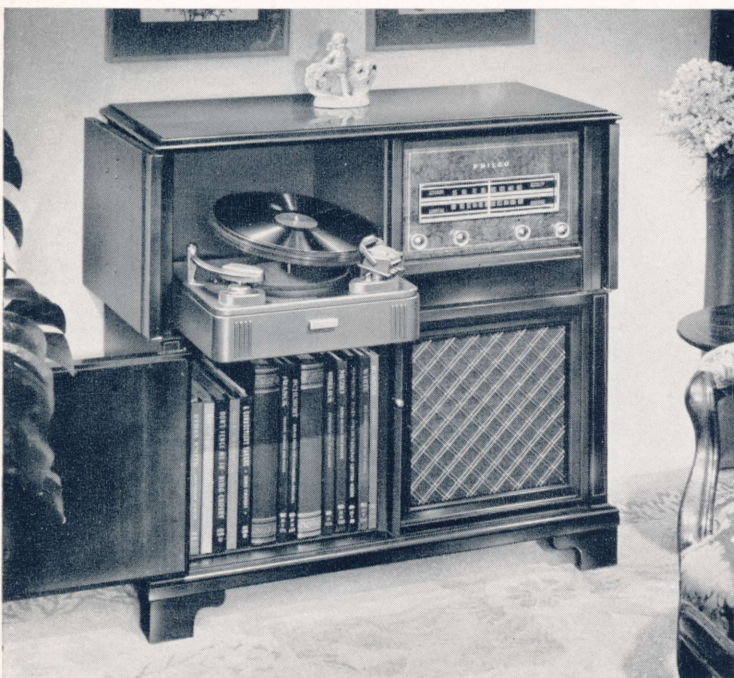
### 7 Philco Tubes, Plus Rectifier

Including the amazing newly developed miniature tubes for greatly improved sensitivity.

### Authentic Federal American Console

Made of the finest Broken Stripe and Swirly Crotch Mahogany veneers. Striking boxwood inlay effect adds luxury and distinction. Authentic pulls finished in Antique English. Sparkling double-strand solid brass grille enhances deep framed grille area. Beauty and integrity of design in the finest of cabinet makers' traditions! 34" high, 35 3/8" wide, 16 7/8" deep.

Automatic Volume Control on FM as well as AM . . . Standard AM and Full 88 to 108 mc FM Bands . . . Beam Power Pentode Audio System





# *Philco 1330* RADIO-PHONOGRAPH



***Famous Philco tone, performance and  
quality in a handsome space-saving 3-speed  
automatic table combination . . . now at  
lowest price in Philco history!***



# Philco 1330 SUMMARY OF FEATURES

## New 3-Speed Record Changer

Operates on a new *simplified* principle developed by Philco research. Stationary Record Platform has no blades or moving parts. New scientifically shaped spindle *nods forward* to push record off its shelf. Fast, positive, gentle, foolproof . . . utterly simple! With a single tone arm, it plays twelve 10-inch or ten 12-inch 78 RPM records; up to fourteen 33 1/3 RPM in all sizes; up to fourteen 45 RPM with Adapter Discs and Non-Slip Driver. *Fullest luxury . . . up to 5 hours of continuous music!*

## Philco Super-Tone Reproducer

Plays all records, old or new, with better tone than recorded music has ever been played before. All records, including 78 RPM, are caressed with just 1/5 of an ounce pressure. Tracks perfectly even in finest grooves and loudest passages. Wider tonal range preserves highs and lows in scientific balance.

## Famous Philco Acoustical System

Specially designed Philco Tone Chamber, Super-Sensitive Speaker and special Philco Circuit work together to deliver vastly improved, more life-like tone.

## Beam Power Pentode Audio System

Great undistorted sound output. A higher power level results in more life-like tones and overtones.

## AC Superheterodyne Circuit

Highly sensitive, selective circuit. Tube Saver Resistor, developed by Philco, regulates current flow and ends tube burn-outs due to power surge. Greatly increases tube life.

## Improved Super-Sensitive Speaker

New dynamic speaker with extra heavy magnet for greatly improved sensitivity—unusually rich bass and brilliant treble for a table combination—plus great volume without distortion or overloading.

## Built-In Loop Aerial

Matched to the circuit for greater efficiency and sensitivity. No outside aerial needed . . . just plug in and play.

## Complete Standard Reception

Covers full broadcast range from 540 to 1620 kilocycles.

## Underwriters' Approval

Tested and approved as safe from both fire and shock.

## 4 Philco Tubes, Plus Rectifier

Including the famous Loktal tubes for higher output.

## Classic Modern Plastic Cabinet

An all plastic creation in clean-cut modern design . . . compact and beautifully proportioned. Slide rule scale of clear plastic trimmed in gold. Rich Mahogany mottled plastic with specially designed matching knobs. 9 7/8" high, 15" wide, 17 3/8" deep.







*Philco 934* **Finest FM-AM table radio in Philco history!**

**New Philco Super-Sensitive FM System with Tuned R.F. Stage and 3-Gang Condenser**

First time in moderate price FM-AM table radio. Delivers superior FM reception close to a station or out on the "fringe". Sharp station separation and maximum reduction of interference, even on crowded channels.

**Built-In Dual Aerial System**

Philco Line Cord Antenna for FM gives greater efficiency and higher signal gain. High impedance loop gives utmost sensitivity for AM reception.

**2 Tuning Bands**

Cover Standard and Full 88 to 108 mc. FM Bands.

**New Tube Saver Resistor**

Eliminates tube burn-out due to power surge.

**Improved Super-Sensitive PM Speaker**

New, extra heavy magnet gives improved bass and brilliant treble—great volume without distortion.

**6 Philco Tubes, Plus Selenium Rectifier**

High output, longer life. Including Balanced FM Detector System, noise-reducing Philco converter.

**Lovely Modern Cabinet in Gleaming Plastic**

A trim, gracefully louvered design in rich mottled Mahogany plastic. Beautifully edge-lighted clear plastic scale against deep Maroon background. Newly designed plastic knobs with polished brass inserts. Cabinet dimensions: 7 $\frac{7}{8}$ " high, 13 $\frac{1}{4}$ " wide, 7 $\frac{3}{4}$ " deep.

**Underwriters' Approved . . . Superheterodyne Circuit AC-DC . . . Beam Power Audio System**





*Philco 932* **Modern beauty in maroon plastic... rich tone**

**Tuned R. F. Stage with 3-Gang Condenser**

Costly circuit design which achieves great sensitivity, clear, sharp station separation and maximum reduction of cross talk and interference, even on crowded channels.

**AC-DC Superheterodyne with  
New Tube Saver Resistor**

Circuit specially designed for high selectivity and sensitivity. Tube Saver Resistor, developed by Philco engineers, regulates current flow and ends tube burn-outs due to power surge. Greatly increases tube life.

**Improved Super-Sensitive Speaker**

New, extra heavy magnet gives greatly improved sensitivity—rich bass and brilliant treble—great volume without distortion. Clear, rounded, life-like tones... truly brilliant reception for a table radio.

**Beam Power Pentode Audio System**

For more life-like tones and overtones without distortion.

**All Standard American Broadcasts**

Tunes full broadcast range, from 540 to 1620 kilocycles.

**5 Philco Tubes, Plus Rectifier**

Including famous Loktal tubes for higher output.

**Striking Modern Cabinet Design**

Radiant sunburst dial, top-mounted for sweeping vision and full range tuning. Clear plastic knobs with brass inserts. Gleaming maroon plastic cabinet. Cabinet dimensions: 7<sup>3</sup>/<sub>32</sub>" high, 13<sup>1</sup>/<sub>4</sub>" wide, 7<sup>1</sup>/<sub>2</sub>" deep.

**Underwriters' Laboratories Approved...**

**Matched Philco Built-In Loop Aerial**





## *Philco 931* Plus performance . . . in gleaming Ivory cabinet

### **Tuned R. F. Stage with 3-Gang Condenser**

Costly circuit design which achieves great sensitivity, clear, sharp station separation and maximum reduction of cross talk and interference, even on crowded channels.

### **AC-DC Superheterodyne with New Tube Saver Resistor**

Circuit specially designed for high selectivity and sensitivity. Tube Saver Resistor, developed by Philco engineers, regulates current flow and ends tube burn-outs due to power surge. Greatly increases tube life.

### **Improved Super-Sensitive Speaker**

New, extra heavy magnet gives greatly improved sensitivity—rich bass and brilliant treble—great volume without distortion. Clear, rounded, life-like tones . . . truly brilliant reception for a table radio.

### **Beam Power Pentode Audio System**

Far more life-like tones and overtones without distortion.

### **All Standard American Broadcasts**

Tunes full broadcast range, from 540 to 1620 kilocycles.

### **5 Philco Tubes, Plus Rectifier**

Including famous Loktal tubes for higher output.

### **Gleaming Ivory Beauty**

Easy tuning, sweeping vision three-dimensional top mounted scale. Clear plastic knobs trimmed in brass. Rich Ivory plastic cabinet. Cabinet dimensions: 7 $\frac{3}{32}$ " high, 13 $\frac{1}{4}$ " wide, 7 $\frac{1}{2}$ " deep.

**Underwriters' Laboratories Approved...Matched  
Philco Built-In Loop Aerial**





*Philco 930* **Value leader in quality and performance**

**Tuned R. F. Stage with 3-Gang Condenser**

Costly circuit design achieves great sensitivity, clear, sharp station separation and maximum reduction of cross talk and interference, even on crowded channels.

**5 Philco Tubes, Plus Rectifier**

Including famous Loktal tubes for higher output.

**AC-DC Superheterodyne with New Tube Saver Resistor**

Specially designed highly sensitive, selective circuit. Tube Saver Resistor, developed by Philco engineers, regulates current flow and ends tube burn-outs due to power surge. Greatly increases tube life.

**Luxurious Mahogany Plastic Cabinet**

Clear-view sweeping dial. Gold brass trim and clear plastic knobs with brass inserts. Lovely Mahogany mottled plastic cabinet. 7 $\frac{11}{16}$ " high, 13 $\frac{3}{8}$ " wide, 7 $\frac{7}{16}$ " deep.

**Super-Sensitive Speaker with increased magnet weight . . . Matched Built-In Loop Aerial . . . Standard American Broadcasts**

*Philco 930-S*

Same design, same features and same super-performance as the 930, in beautiful Pearl Beige plastic cabinet.







*Philco 537-I* **Clock Radio . . . turns off and on, automatically**  
 TRANSITONE

**Dependable Electric Clock**

Turns radio OFF automatically. Turns radio ON at any pre-set time . . . acts as a gentle musical "alarm".

**Philco AC Superheterodyne Circuit**

Specially designed for extreme sensitivity and selectivity. Pre-set tuning comes in without annoying station drift.

**PM Dynamic Speaker**

Gives high power output; clear, rich rounded tones.

**4 Philco Tubes, Plus Rectifier**

Including famous Loktals to provide higher output.

*Philco 537*  
 TRANSITONE

This Philco Clock Radio in rich brown plastic has instant eye-appeal! Lovely brown clock face and tuning knob. Has all the same features as the "537-I".

**Distinctive Plastic Cabinet**

A stunning, delicately louvered cabinet in rich ivory plastic. Interesting modern side panels enclose the louvered surface. Matching knurled plastic knob. Dimensions: 6½" high, 11" wide, 6⅞" deep.

**Beam Power Audio . . . Standard Broadcasts . . .  
 Matched Built-In Loop Aerial**







*Philco 534* **Thrilling new advance in compact radio tone**  
TRANSITONE

**New Philco AC-DC Superheterodyne Circuit**  
Expressly designed for extreme sensitivity and selectivity.

**Improved Super-Sensitive PM Speaker**  
New, larger size speaker with extra heavy magnet gives improved bass and brilliant treble—great volume without distortion.

**Gets All Standard American Broadcasts**  
Tunes full broadcast range, from 540 to 1620 kilocycles.

**4 Philco Tubes, Plus Rectifier**  
Including famous Loktal tubes for higher output.

**Exquisite New Modern Cabinet**  
Radiantly lighted numerals inscribed in free-standing clear plastic scale. Rich Mahogany mottled plastic cabinet. Transparent knobs with polished brass inserts. 7 $\frac{3}{8}$ " high, 13 $\frac{1}{4}$ " wide, 7" deep.

**Underwriters' Approved . . . Built-In Loop Aerial**  
. . . Beam Power Pentode Audio System



*Philco 534-I*  
TRANSITONE

Same clear, rich tone . . . same brilliant performance as the Philco 534 in a gleaming Ivory plastic cabinet.





PT 532-M MAHOGANY

*Philco 532* **Sparkling modern design in choice of colors**  
 TRANSITONE

**New Philco AC-DC Superheterodyne Circuit**

Expressly designed for extreme sensitivity and selectivity.

**Permanent Magnet Dynamic Speaker**

Unusually clear, rich rounded tones; brilliant reception.

**Gets All Standard American Broadcasts**

Tunes full broadcast range, from 540 to 1620 kilocycles.

**4 Philco Tubes, Plus Rectifier**

Including famous Loktal tubes for higher output and longer life.

**Beautiful Modern Design in the New Trend**

Stunning plastic cabinet in ebony, mahogany or ivory—clear plastic open latticed grille. Clear plastic knobs with brass centers. Beautifully lighted inclined glass scale. 7 $\frac{1}{2}$ " high, 11 $\frac{3}{8}$ " wide, 7 $\frac{1}{4}$ " deep.

**Underwriters' Approved . . . Built-In Loop Aerial . . . Beam Power Pentode Audio System**



PT 532-I IVORY



PT 532-E EBONY





*Philco 530* **TRANSITONE** *Value leader of the lowest-price radio field!*

**New Philco AC-DC Superheterodyne Circuit**  
Circuit expressly designed for extreme sensitivity.

**Permanent Magnet Dynamic Speaker**  
Unusually clear, rich, rounded tones; brilliant reception.

**Improved Built-In Loop Aerial**  
Matched to the circuit for greatest sensitivity.

**Easy-to-Read Horizontal Dial . . . Gets All Standard American Broadcasts**  
Tunes full broadcast range, from 540 to 1620 kilocycles.

**4 Philco Tubes, Plus Rectifier**  
Including famous Loktal tubes for higher output.

**Beautiful Modern Classic Cabinet**  
Rich brown plastic. 6" high, 11" wide, 5 3/8" deep.

**Underwriters' Laboratories Approved . . . Beam Power Pentode Audio System**

*Philco 530-I* **TRANSITONE**

A charming radio in gleaming ivory plastic. Same features as the "530" for fine tone and power . . . same style for those who prefer light color for bedroom or kitchen.







*Philco 633* **Aristocrat of 3-way portables! Genuine leather case**

**Powerful New Philco AC-DC Superheterodyne Circuit**

Amazing performance even where others fail. Challenges all comparison for sensitivity, noise-free reception, output and tone . . . regardless of price! Plays on AC or DC current or self-contained battery.

**Tuned R. F. Stage with 3-Gang Condenser**

Costly circuit design achieves great sensitivity, sharp station separation and maximum reduction of interference, even on crowded channels.

**Super-Magnecor Built-In Aerial**

Extra large, extra sensitive version of the exclusive Philco Magnecor Aerial for maximum signal pick-up. Stays permanently concealed inside cabinet. No need for raising or extending lid aerial.

**Concealed Standard Battery Block**

Power for best performance, long life at lowest cost.

**5 Philco Tubes Plus Selenium Rectifier**

High output at low operating cost. Instant warm-up.

**Luxurious Genuine Leather Case**

Genuine cowhide leather finished with French edge, saddle stitched. A touch of automatic catch releases disappearing door, reveals handsome all-plastic radio face. 10" high, 13" wide, 6½" deep.

**Pentode Audio System . . . Powerful PM Speaker  
... Standard American Broadcasts ...  
Underwriters' Approved**





*Philco 632* **Modern beauty with tone and sensitivity to match**

**New Philco AC-DC Superheterodyne Circuit**

Sensitive, economical to operate. Plays on any standard AC or DC house current . . . or self-contained battery.

**Philco Built-In Magnecor Aerial**

Entirely new kind of aerial developed by Philco research. Stays permanently concealed inside cabinet. No lid aerial to raise or extend . . . yet gives amazing sensitivity.

**Concealed Standard Battery Block**

Specially engineered to provide power required for best performance and long life at lowest cost per hour. Concealed within the cabinet, out of the way and out of sight.

**"On-Off" Switch Operated by Scale Cover**

Plugged in or on batteries, the set starts playing instantly when the scale cover is lifted.

**Powerful PM Dynamic Speaker**

Designed to deliver higher output on less current. Superb performance . . . clear, rich, rounded tone.

**4 Philco Tubes, Plus Selenium Rectifier**

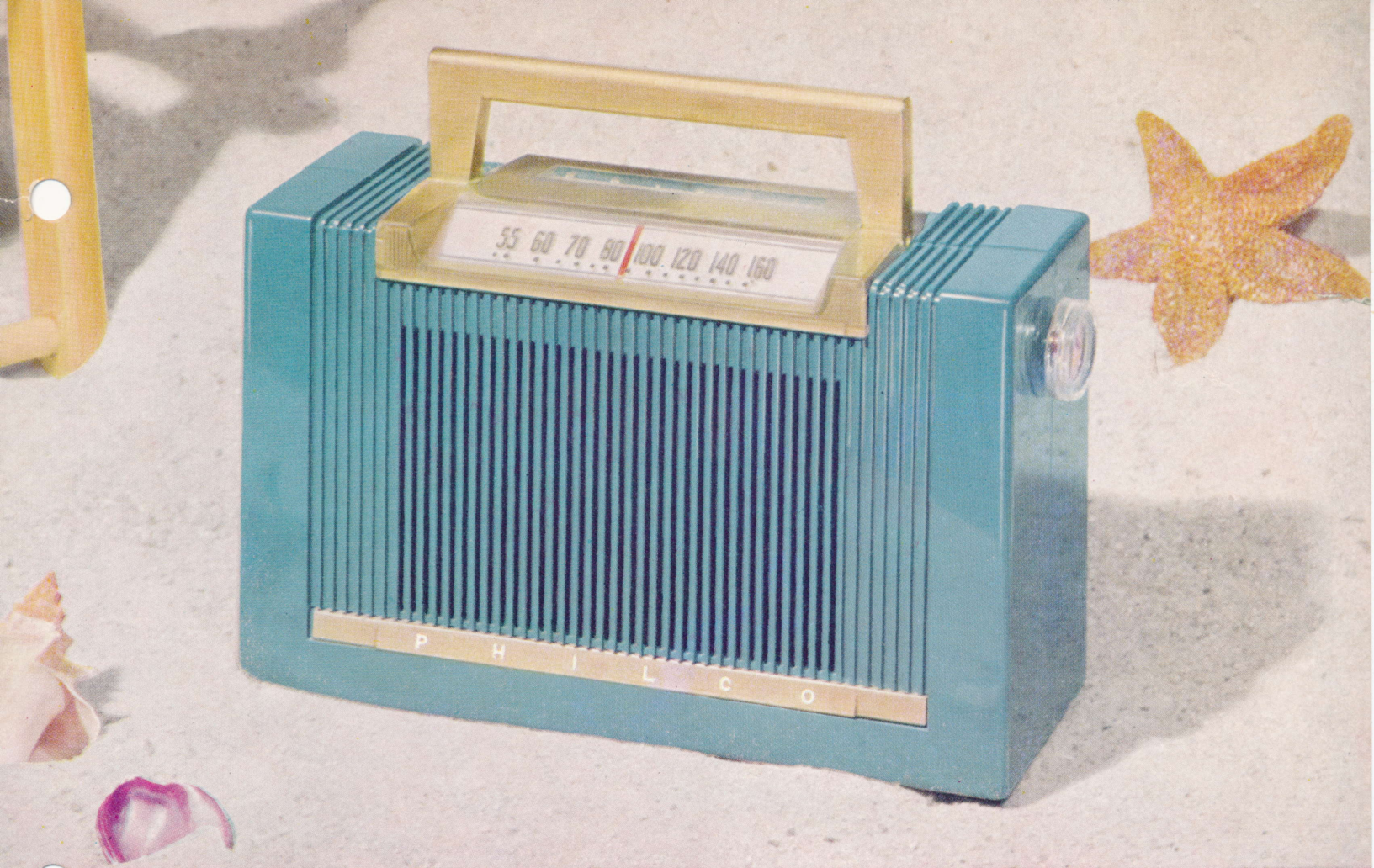
High output at low operating cost. Instant warm-up.

**Handsome Ultra Modern Portable**

Striking design in Maroon plastic with gleaming brass trim. Handsome three-sectional louvered grille. Radiant plastic scale, protected with brass-finished lid. Milled easy-grip knobs and brass-finished handle.  $7\frac{13}{16}$ " high,  $10\frac{7}{16}$ " wide,  $4\frac{23}{32}$ " deep.

**Philco Pentode Audio System . . . Standard American Broadcasts...Underwriters' Approved**





*Philco 631* **America's finest "Personal" portable radio!**

**Philco AC-DC Superheterodyne Circuit**

Expressly engineered for great sensitivity . . . finest performance ever in a 3-way "personal" radio. Plays on AC or DC current . . . or self-contained batteries.

**Philco Magnecor Aerial—No Lid to Lift**

Entirely new kind of aerial developed by Philco research. Stays permanently concealed inside cabinet. No lid, loop or rod to lift . . . yet gives amazing sensitivity.

**Self-Contained Batteries**

Uses two standard A Batteries and B Battery Pack.

**4 Philco Tubes, Plus Selenium Rectifier**

High output at low operating cost. Instant warm-up.

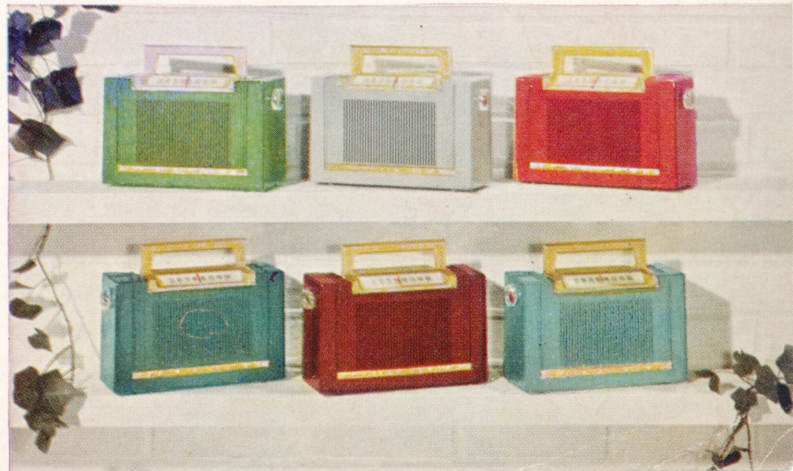
**Choice of 6 Gorgeous Colors**

The cabinet of this sensational Philco "Personal" is available in choice of Teal Green, Maroon, Caribbean Blue, Cinnabar Red, Arabian Sand, and Nile Green.

**Classic Modern Plastic Cabinet**

Stunning design with all-vision plastic scale trimmed in gold. Gleaming brass-finished handle cleverly "nested" when not in use. Compact, easy to carry or pack . . . 5 7/8" high, 9 1/4" wide, 3 1/2" deep.

**Philco Pentode Audio System...PM Speaker... Standard Broadcasts...Underwriters' Approved**







*Philco 629* **New high in portable performance and value**

**New Philco AC-DC Superheterodyne Circuit**  
Sensitive, economical to operate. AC, DC or battery.

**Built-In Loop Aerial**  
Matched to the circuit for greater efficiency.

**Concealed Standard Battery Block**  
Power for best performance, long life at lowest cost.

**Gets All Standard American Broadcasts**  
Tunes full broadcast range, from 540 to 1620 kilocycles.

**4 Philco Tubes, Plus Selenium Rectifier**  
High output at low operating cost. Instant warm-up.

**High Styling in All-Plastic Teal Green Case**  
Handsome perforated plastic grille enhanced by gold and white plastic scale and clear plastic handle. Gleaming brass-finished knobs. Teal Green plastic cabinet. Cabinet dimensions: 8 $\frac{1}{4}$ " high, 10 $\frac{3}{16}$ " wide, 4 $\frac{23}{32}$ " deep.

**Philco Pentode Audio System . . . Powerful PM Speaker . . . Underwriters' Approved**



*Philco 629-M*

The same appealing beauty, fine performance and amazing value as the 629 in rich Maroon plastic.