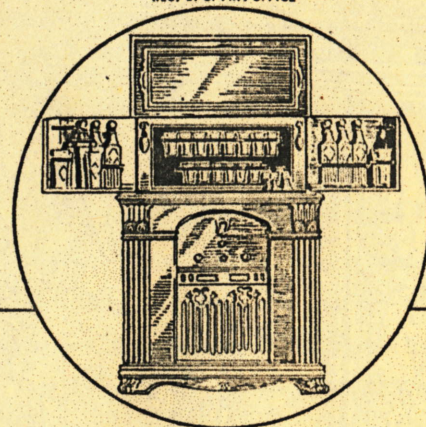


Radiobar

REG. U. S. PAT. OFFICE



RADIOBAR CO!
AND
TYLER CABINET CO.
7110 McKinley Ave.
Los Angeles - PL. 3171

B. S. Tucker



"RADIOBAR" Custom built modern cabinet combining
Oriental treatment. Price upon request.

COPYRIGHT 1933. RADIOBAR COMPANY OF AMERICA.

CORDIAL ENTENTE Established!

THE OLD ORDER CHANGES AND MORE PRICELESS LEISURE COMES TO ENRICH OUR LIVES. THE AGE-OLD GIFT OF FRIENDSHIP, HOWEVER, IS NOW TO FIND WIDER EXPRESSION IN NEW FORMS OF HOSPITALITY.

• The fine art of entertaining is raised to high places in a new and magnificent piece of home furnishing, Radiobar, in which are combined radio reception and a finely appointed bar; a two-in-one cabinet of compatibles—ether-wave entertainment and liquid refreshment, either one or both being immediately available.

Within the inner recesses of this genie house are received radio programs from world capitals—magnificent radio reception—and here, too, is an in-built bar complete with bottle stores, glass, ice, equipment and tools for making mixed drinks.

Not only are guests served with entertainment for the ear and palate, but also, the host's convenience is served. Without moving from the center of social interest the host may command music from the air and conjure plain and fancy libations; be all things to all guests.

TWIN THRILLS

behind closed doors

These twin purposes have affinity for each other—musical programs which enrich home entertainment and hospitable refreshment which compliments the guest while proclaiming the welcome of host and hostess.

The association is natural, forming a perfect hospitality team—words and music below and a liquid treasure trove above.

Radiobar keeps the party in entertaining rooms. Without organization the serving of drinks becomes a romp of invited guests through pantries and kitchen, an invasion of the servants' quarters. A divided party is never wholly successful.

Radiobar is an efficient accessory of home entertaining; is strongly built and intelligently planned for the better service it gives, for it replaces the tottering tea wagon and wobbly bridge table makeshifts of poor service, which, when they tip over, spill liquids, spoiling temper, gowns and furnishings.

In general form the larger Radiobar resembles the serving sideboard of grand mansions, and when scaled

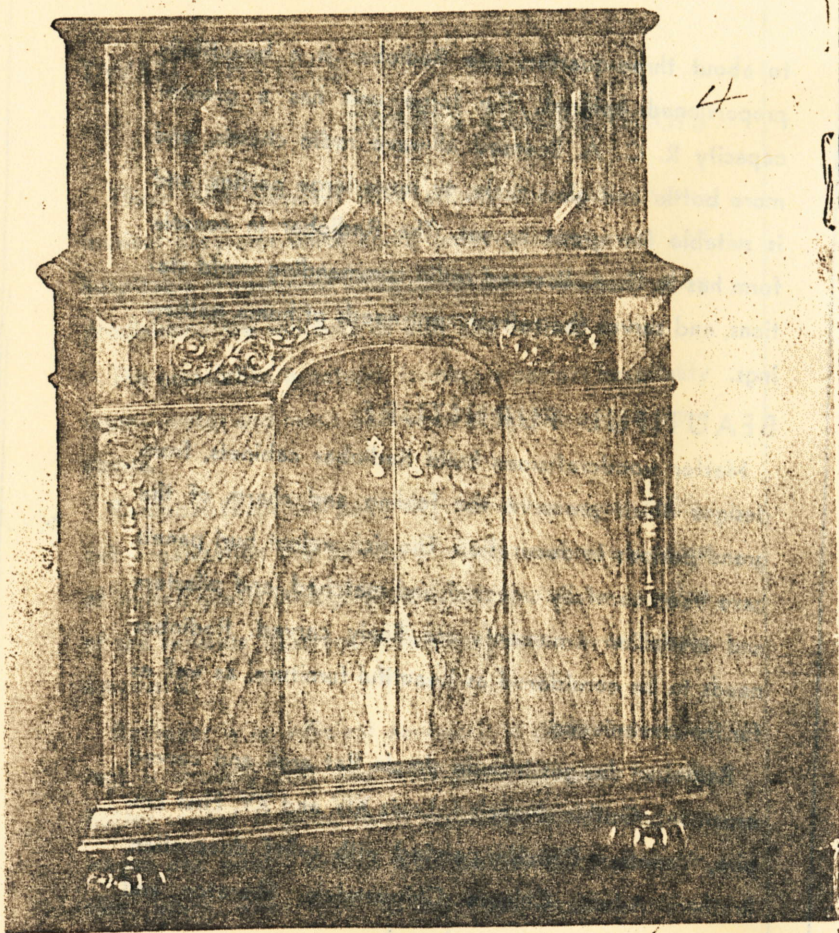
to about three-quarters size Radiobar is a beautifully proportioned cabinet. The large unit has a greater capacity R. C. A. licensed all-wave radio chassis, and more bottle and glass racks, to serve large parties, and is suitable for great houses. The Radiobar in console form has R. C. A. licensed radio commanding world stations, and serves the refreshment needs of home gatherings.

BEAUTIFUL FURNITURE

Master woodcraftsmen build Radiobar cabinets, from designs which preserve the feeling and charm of the grand periods in decoration. The rich walnut burl panels have been carefully selected and matched, and pilasters and medallion ornaments are finely carved. Radiobar needs to be considered as beautiful furniture, as well as for its convenience.

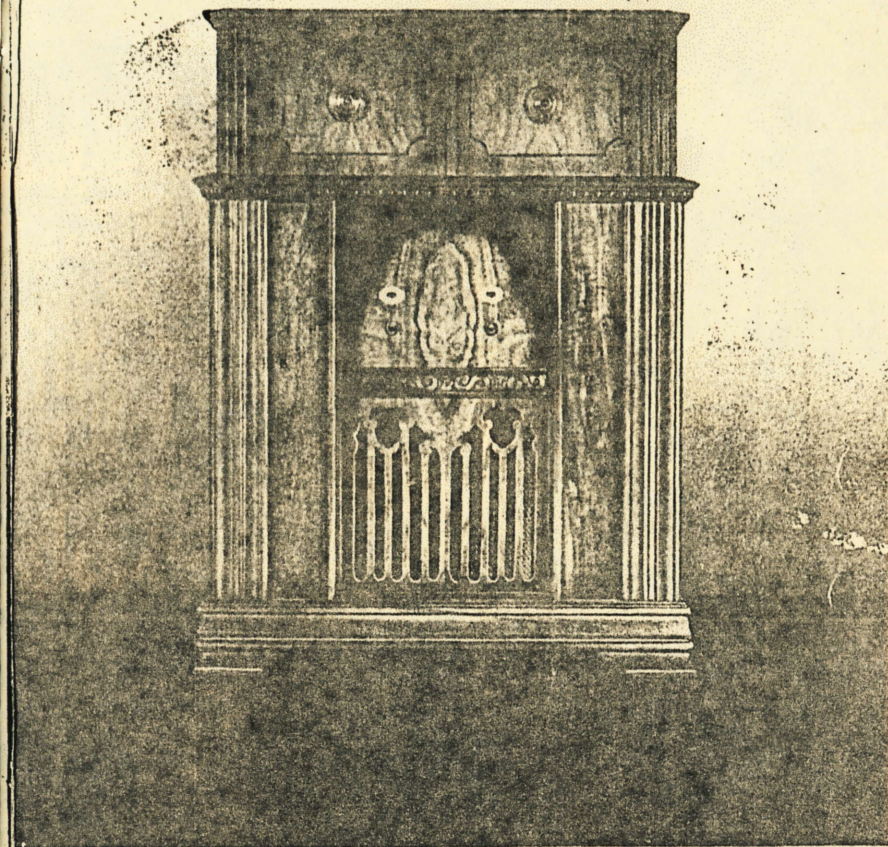
Radiobar designs include simple flat arch and carved ornament, Gothic, Francis I, Louis XIV and XV, First Empire, Venetian Crackle painted with relief decoration, Brothers Adam, Chinese Chippendale, Sheraton and Biedermeier orders from abroad.

In conclusion we might add—nothing in Radio is comparable in price or performance.

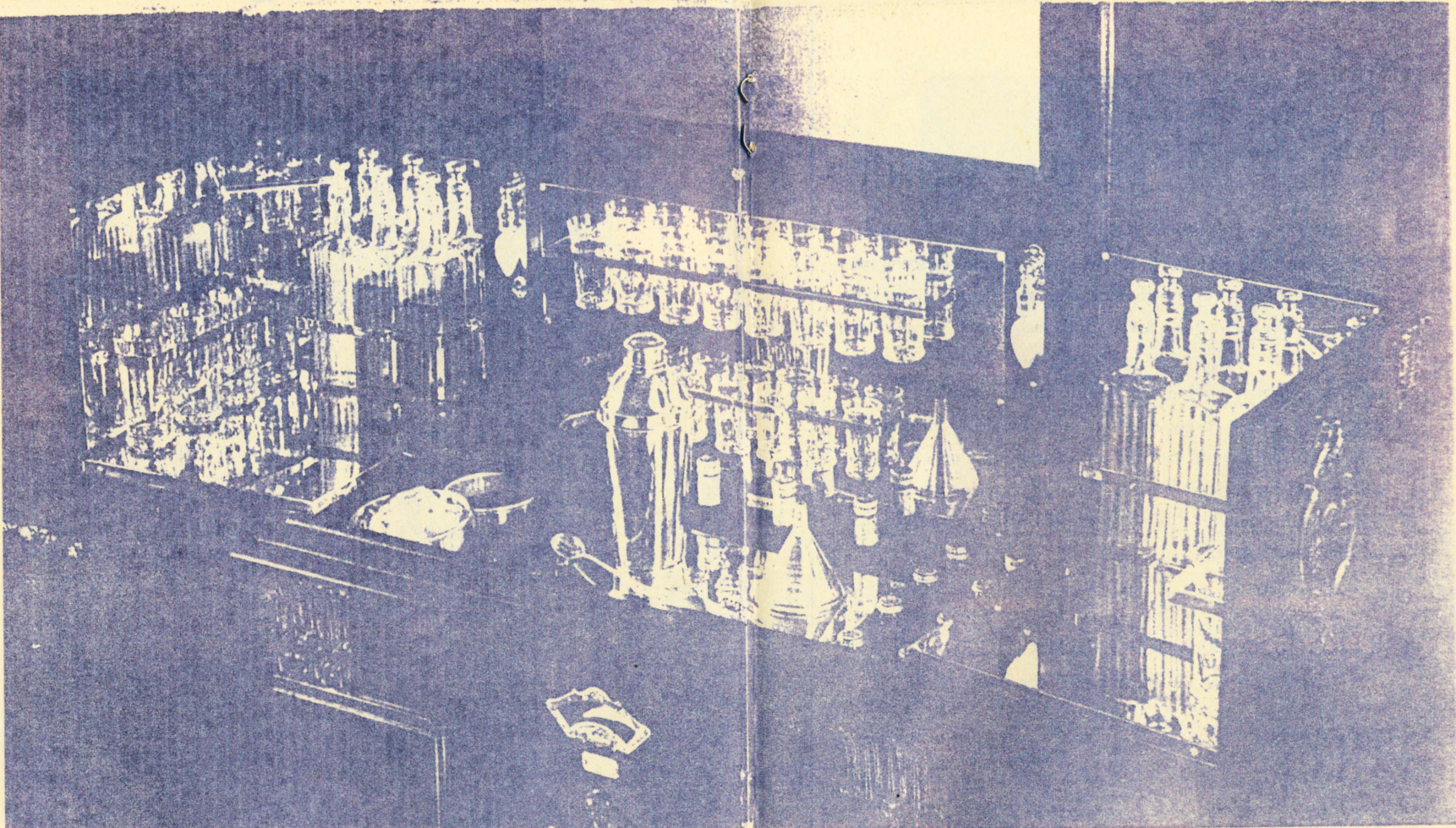


Model 510 — "RADIOBAR" Walnut cabinet with genuine carvings, size when closed $50\frac{1}{4}$ " high, $37\frac{1}{4}$ " wide, $18\frac{1}{8}$ " deep. When open it is 66" high, 64" wide. For equipment contained in this model see pages 8, 9, and 10. The Radio is the very latest 10 tube, all-wave, R.C.A. licensed chassis. 15 to 575 meters. Price with full equipment f.o.b. factory **\$295**

151



Model 508 — "RADIOBAR" Walnut finish cabinet. Size when closed 44" high, $33\frac{3}{4}$ " wide, $17\frac{1}{4}$ " deep. When open it is 60" high, 60" wide. For equipment contained in this model see pages 8, 9, and 10; except for two liquor decanters the equipment is the same. The radio is the very latest 8 tube, all-wave, R.C.A. licensed chassis. 15 to 575 meters. Price with full equipment f.o.b. factory \$189.00. MODEL 505 (shown above) same as Model 508 except it has 5 tube superheterodyne radio, 75 meter short-wave switch, does not contain electric lights. Price f.o.b. factory **\$129**



BRUHL-BOURGES PHOTO

A typical Radiobar interior—Ready for Use—See Page 10 for detailed description

Musical America has a new bar!

Radiobar

REG. U. S. PAT. OFFICE

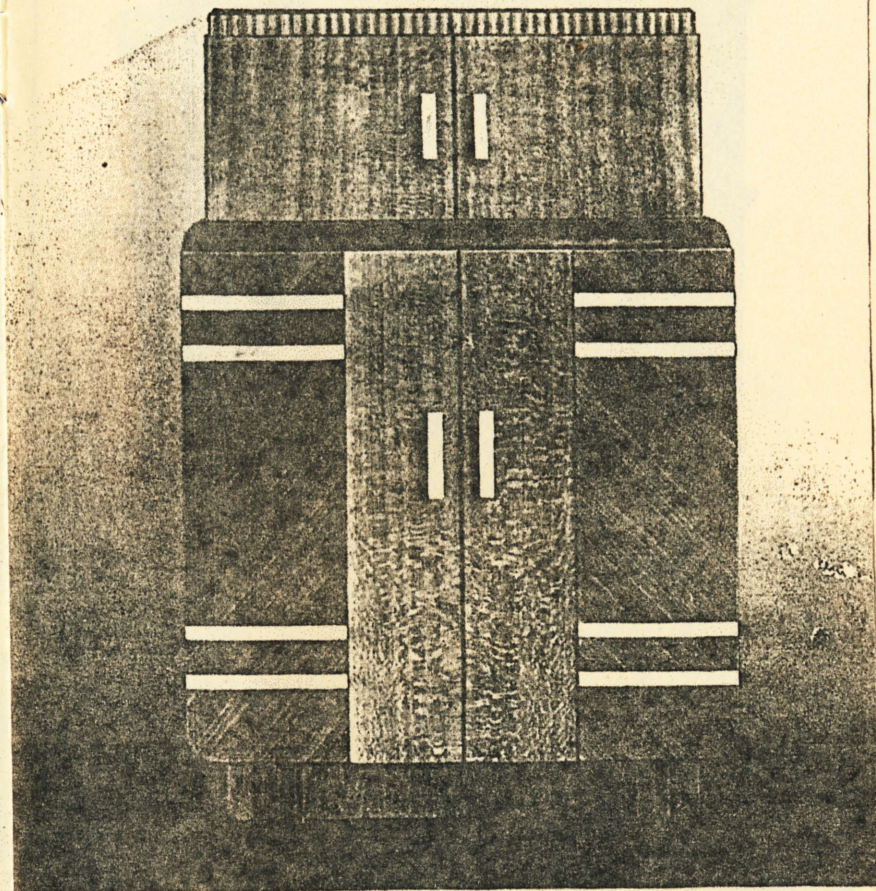
RADIOBAR EQUIPMENT

● The equipment included in "RADIOBAR" consists of 24 beautiful glasses (three sizes) of special design, six liquor decanters with machine turned stoppers, large highly polished cocktail shaker, polished funnel, very large deep highly polished ice container, and highly polished refuse container, stainless steel knife, special bottle opener and cork screw and two electric lights. Space is provided for twelve bottles of ginger ale or charged water, and two bitters bottles. (Except on Models 508 and 505, space is provided for only eight bottles of ginger ale or charged water.)

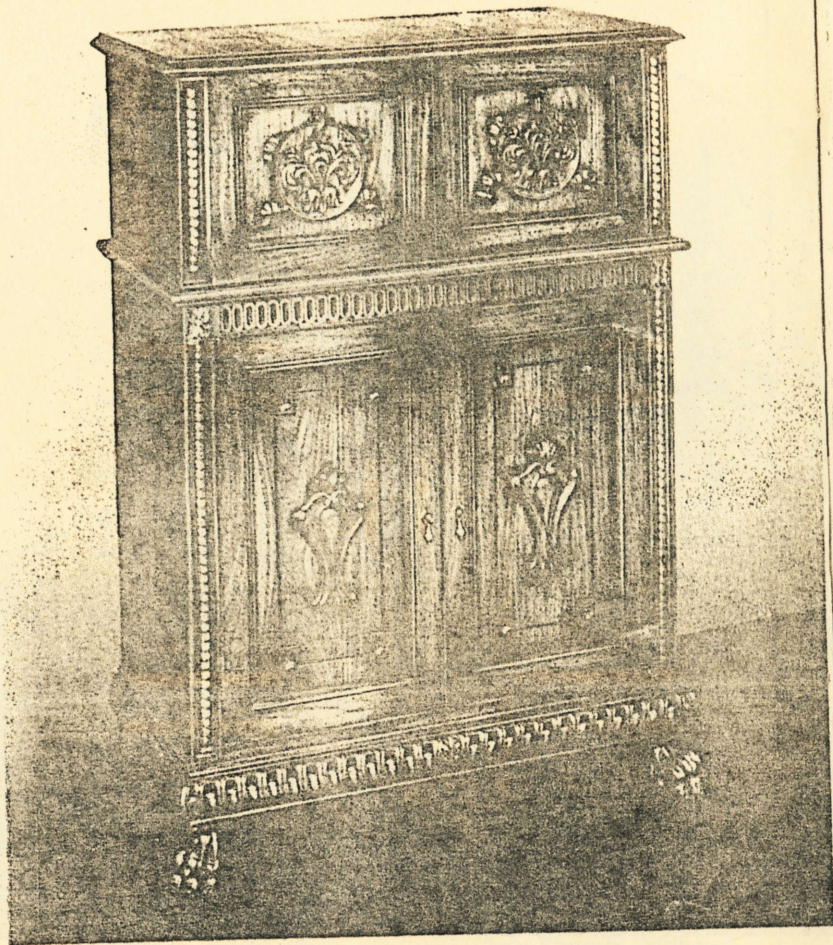
Radiobar Radio Specifications

The Radio used in Radiobar is the finest built.
Licensed by RCA

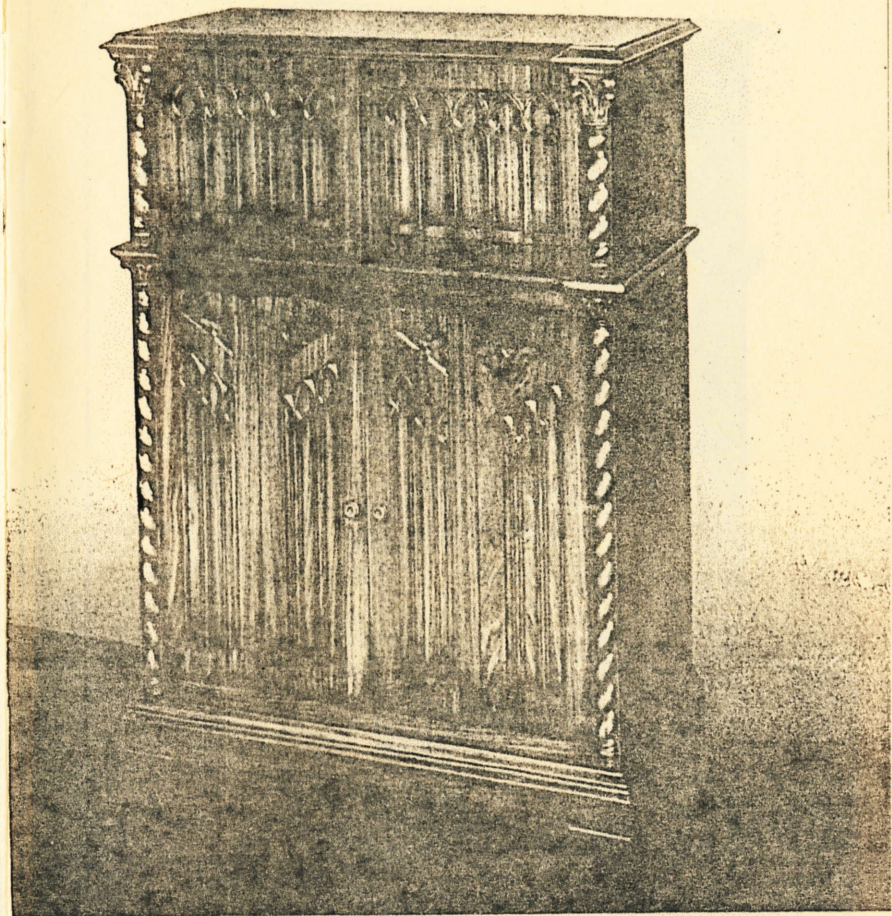
Superheterodyne	Two full I. F. Stages
9 and 10 Tuned Circuits	Floating 3-Gang Condenser
Duo-Diode Detector	Duo-Grid Amplifier
Fully Shielded Chassis	Battleship Construction
Full Vision Dia-Tune Dial	Exact Kilocycle Calibration
10 Kilocycle Separation	Shadow Color Tuning
Silent Automatic Volume Control	Variable Tone Control
Fused from Rear	Speaker 10 1/2" Dynamic
8 and 10 New Type Tubes	2—53 Tubes Push Pull
Silent Between Stations (10 tube model)	Driver Audio Stage



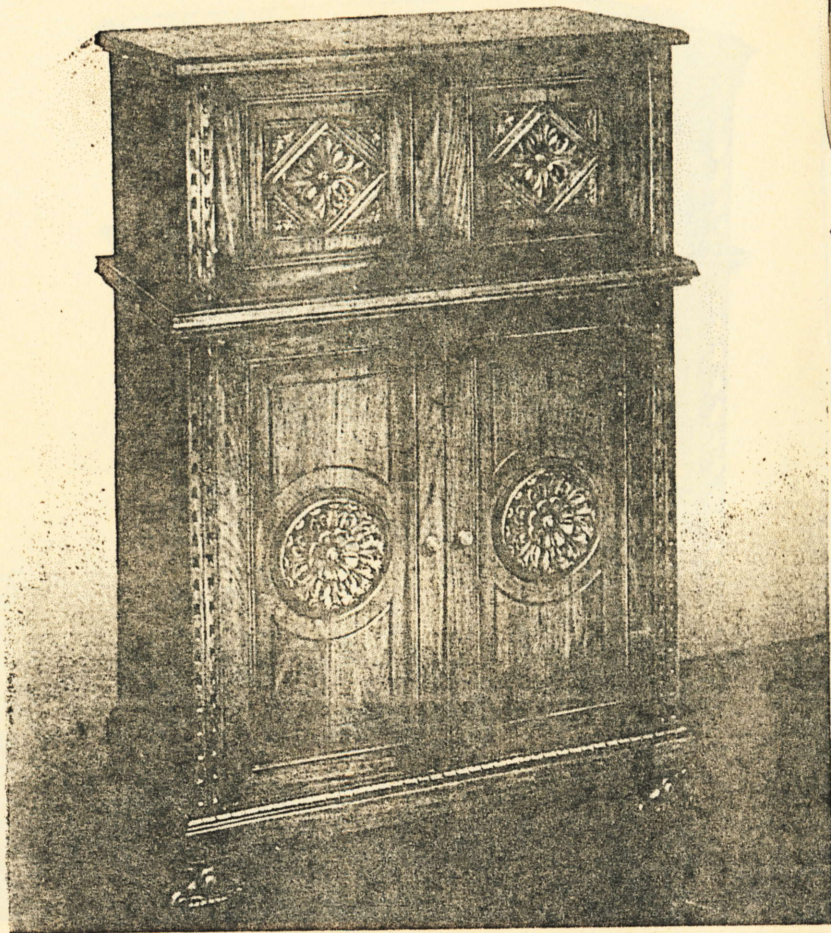
Model 528 — "RADIOBAR" Modernistic, ribbon grained walnut cabinet with matched Oriental lacewood in center and top panels. Chromium inlays. Size when closed 47 1/4" high, 34" wide, 17" deep. When open it is 63" high, 60" wide. For equipment contained in this model see pages 8, 9, and 10. The Radio is the very latest 8 tube, all-wave, R.C.A. licensed chassis. 15 to 575 meters. Price with full equipment f.o.b. factory **\$249**



Model 510A "RADIOBAR" Italian Renaissance, custom built beautifully carved selected Walnut. Interior, radio and equipment same as Model 510. Price with full equipment f.o.b. factory **\$595**



Model 510B "RADIOBAR" Gothic design, custom built, beautifully carved selected Walnut. Interior, radio and equipment same as Model 510. Price with full equipment f.o.b. factory **\$500**



Model 510C "RADIOBAR" Jacobean design, custom built, beautifully carved selected Walnut. Interior, radio and equipment same as Model 510. Price with full equipment f.o.b. factory **\$500**

To ARCHITECTS and DECORATORS:

• We are pleased to prepare tissue rough sketches of Radiobar equipment in special cases, designed in the period of particular rooms and to fit special requirements, and upon exchange of idea, formal perspective and detailed drawings. Architects and decorators are invited to correspond with our designers.

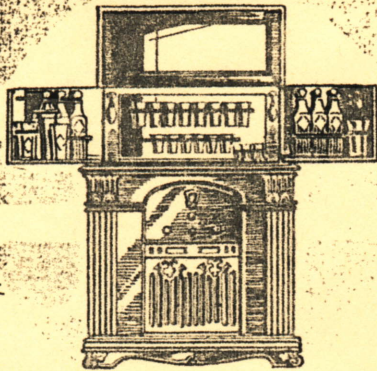


Radiobar Company of America

LOS ANGELES, CALIF.
3582 Wilshire Boulevard

NEW YORK, N. Y.
270 Park Avenue

Prices subject to change without notice



Radiobar . . .

Cable Address "Radiobar"

REG. U. S. PAT. OFFICE

ANNOUNCEMENT

NEW 1935 MODELS

Radiobar Company of America
 Factory and Main Office
 7100 McKinley Avenue
 Los Angeles, Calif.
 U. S. A.

PLasant 3171

Branches
 and
 Distributors

WE INVITE YOU TO VISIT OUR FACTORY AND DISPLAY ROOM TO INSPECT THESE NEW RADIOBARS.

	<u>Model</u>	<u>Chassis</u>	<u>List Price (with radio & glassware)</u>	<u>List Price-Cabinet (with glassware- without radio)</u>	<u>Pieces of glassware</u>
NEW YORK					
CHICAGO					
ST. LOUIS					
HOUSTON					
SAN FRANCISCO	105	5 Tube dual-wave 19-50 meters,	\$ 89.50	\$ 59.50	20
SEATTLE					
PHILADELPHIA					
DETROIT	106	6 Tube all-wave 15-575 meters,	109.50	59.50	20
PITTSBURG					
LOS ANGELES	505	5 Tube dual-wave 19-50 meters,	139.00	109.00	35
JAPAN					
SHANGHAI	506	6 Tube all-wave 15-575 meters,	159.00	109.00	35
HONGKONG					
MANILA	508	8 Tube all-wave 15-575 meters,	189.00	109.00	35
MOROCCO					
CAPETOWN	526	6 Tube all-wave 15-575 meters,	219.00	169.00	40
ANTWERP					
LONDON					
MEXICO CITY	528	8 Tube all-wave 15-575 meters,	249.00	169.00	40
CHILE					
INDO-CHINA	516	6 Tube all-wave 15-575 meters,	265.00	215.00	40
CUBA					
EGYPT	510	8 Tube all-wave 15-575 meters,	295.00	215.00	40
ALGOA BAY					
HONOLULU					
BRAZIL					

RADIOBAR is AMERICAS GREATEST VALUE in RADIO - it gives you a HANDSOME piece of furniture, a FINE R.C.A. licensed RADIO and when open, a COCKTAIL BAR which makes a GREAT COMBINATION.

We are here to assist you in every way possible to sell RADIOBARS. Let's talk it over.

ORDER NOW to insure prompt delivery. LIBERAL DISCOUNTS to dealers.

Phone, write or call at our office for further detailed information.

BERNARD S. TUCKER

California Sales Division.

Note: Factory, office and display room - 7100 Mc Kinley Ave., (two blocks east of Avalon Blvd., just north of Florence Ave.)

PRICE LIST ON GLASSWARE

Models - 105 & 106 - Set - \$5.00

4 - 2 oz. glasses	@ .10 ea.
6 - 5 oz. glasses	@ .10 ea.
6 - 10 oz. glasses	@ .20 ea.
1 Shaker	@ 1.25
4 Decanters	@ .50 ea.

Models - 505-506-508 - Set - \$12.50

8 - 2 oz. glasses	@ .15 ea.
8 - 5 oz. glasses	@ .30 ea.
6 - Old Fashion glasses	@ .40 ea.
6 - 10 oz. glasses	@ .40 ea.
1 Shaker	@ 1.50
6 Decanters	@ .50 ea.

Models - 526-528-516-510 - Set - \$24.00

8 - 2 oz. glasses	@ .15 ea.
8 - 5 oz. glasses	@ .30 ea.
8 - Old Fashion glasses	@ .40 ea.
8 - 10 oz. glasses	@ .40 ea.
1 Shaker	@ 1.50
1 Bitters Bottle	@ .35
6 Decanters	@ 2.00 ea.