

Photographs



**PHILCO
CRUISE**



**BERMUDA
AND
NASSAU**

STATEROOM

NASSAU

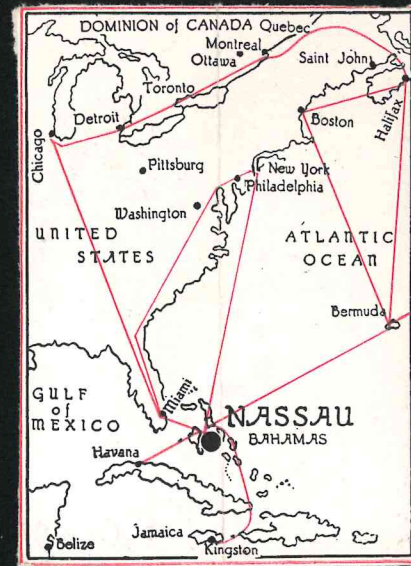
NAME E. V. KNOWLTON

STEAMER QUEEN of BERMUDA

ROOM NO. B 32

SAILING MAY 15th.

DESTINATION PHILCO CRUISE



"Au revoir"





Frank A. Clark

First round of the Deck
as we sailed from
Pier 95, North River,
Foot West 55th St.,
NEW YORK CITY.



Getting their sea-legs



C. Roy Coleman



The Pea-Soupers
from
Montreal





Tug o' War.....

Mr. Skinner (President of Philco) and his son at Deck Tennis

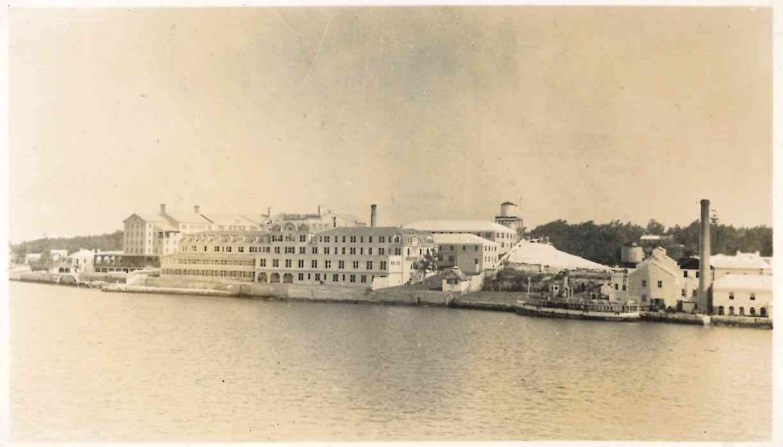
.....with Southern California

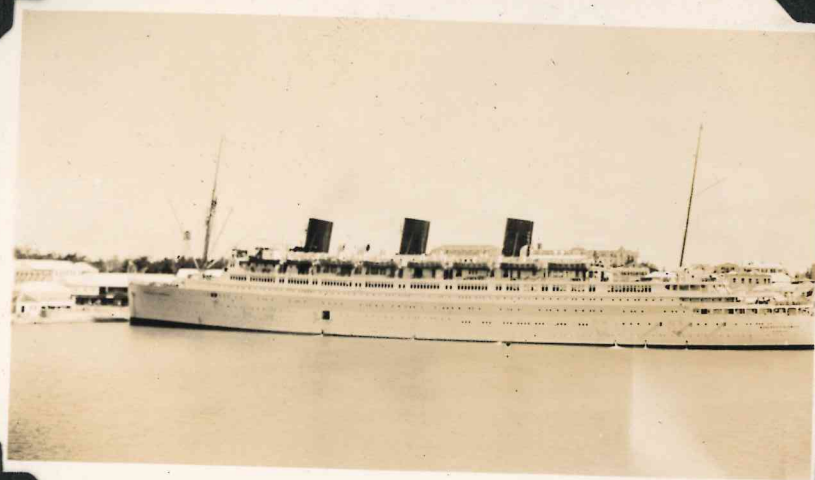


First Glimpses of
Bermuda
as we approached Hamilton



British Cruisers standing off
Hamilton. Bermuda is the
base of the British West
Atlantic Squadron

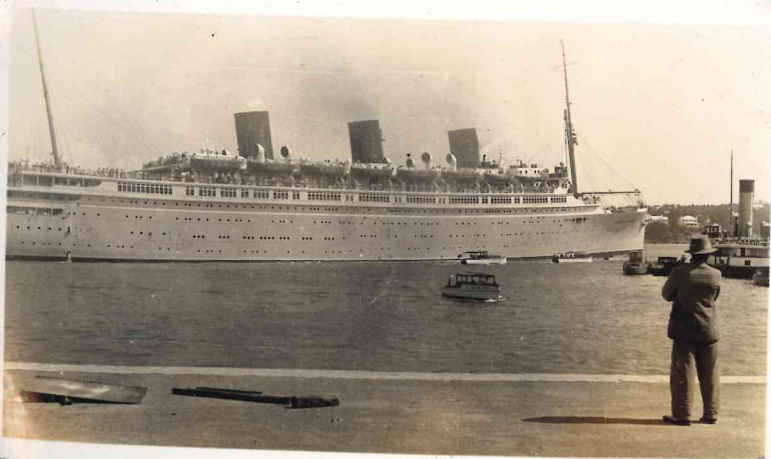




"Monarch of Bermuda"

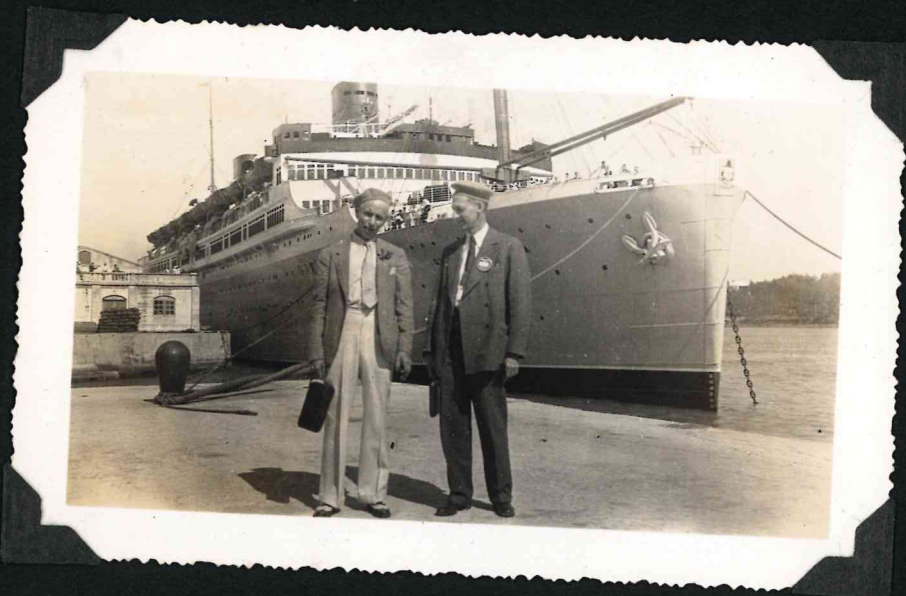


HAMILTON
Capital of Bermuda
666 Miles Southeast of New York City



"Queen of Bermuda"







No cars allowed on the island.
You have the choice of bicycles,
democrats, cabs or electric
railway. Note the cop in the
background with the pith helmet.
See the covering on the saddle of
the bike.



First stop in our drive
about the island--"Devil's
Hole." Charlie Robinson
and Roy Coleman carving
initials and dates in cactus.



Fishing from the bridge in
Devil's Hole



On the pink coral beach of
Frascati Hotel



Angel Fish (light blue) emblem
of Bermuda

Be Sure To Visit Bermuda's Only English Bar!

The
Way¹/₂ House

OPPOSITE THE AQUARIUM, IN CENTRE OF VILLAGE.

SELECT LOUNGE-BAR-CAFE

COLD MUNCHENER HOFBRAU AND LOWENBRAU.

MANN CROSSMAN'S (Old English) ALES.

LIGHT LUNCHEES and AFTERNOON TEAS.

LOBSTER SALAD A SPECIALTY

. . . COCKTAIL BAR . . .



FAMOUS FOR

"The Red Devil Swizzle"



We Cater Primarily to the Traveling Tourist

*FULLY EQUIPPED with FRIGIDAIRE and REQUISITES of
MODERN CONVENIENCE*

HOTEL SERVICE AT CAFE PRICES.

KINDLY REMEMBER IT'S

The Half Way House

IN CENTRE OF VILLAGE, BEFORE HOTEL

— One Minute's Walk from Flatts Station —

ICI ON PARLE FRANCAIS

C. E. YOUNG, Prop.



Turtles in gardens near
the Aquarium



Fine piscatorial specimens
to be seen at the Aquarium



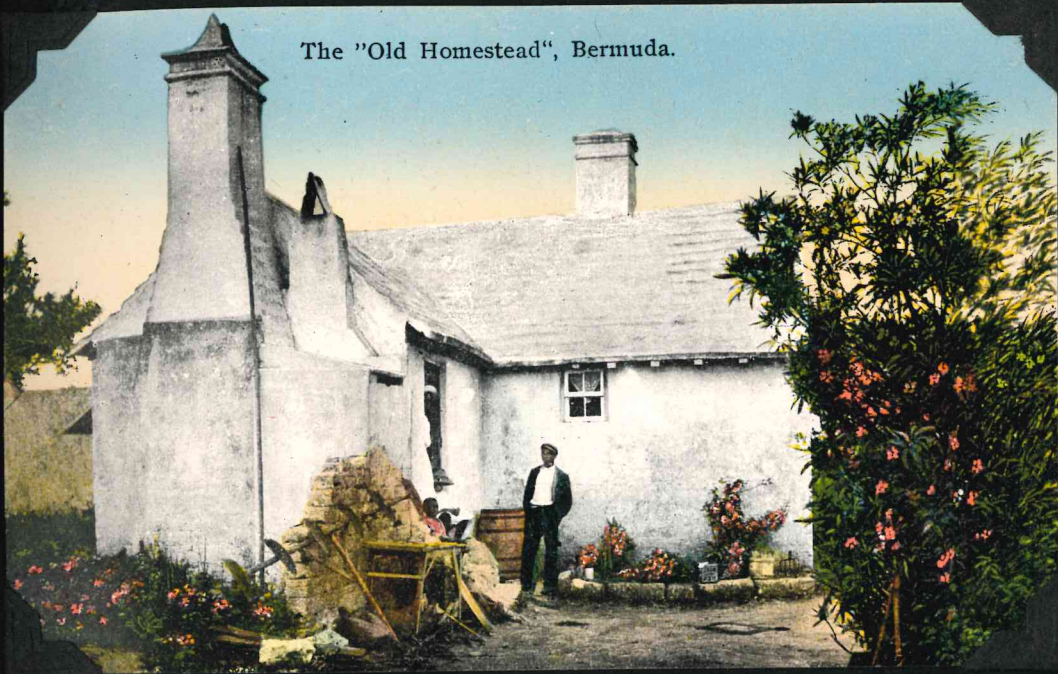
AFTER THE "HEAVENLY BAND" HAD FINISHED PLAYING

Two Toronto women and two small children were sitting in this cottage at Pine Beach, Lake Simcoe, last evening, when a roaring gale hit the district, sent this giant maple down on the roof over their heads. Mrs. John Taylor, her nine-year-old daughter, Shirley, five-year-old Elaine Robinson and a servant, were miraculously untouched. They rushed to a neighbor's house in the height of the storm. While the wind uprooted a dozen trees and wrecked three other cottages, the children, on their knees, prayed: "Please God, stop the heavenly band from playing."



Fine piscatorial specimens to be seen at the Aquarium

The "Old Homestead", Bermuda.



Bridge at Norwood, Bermuda.

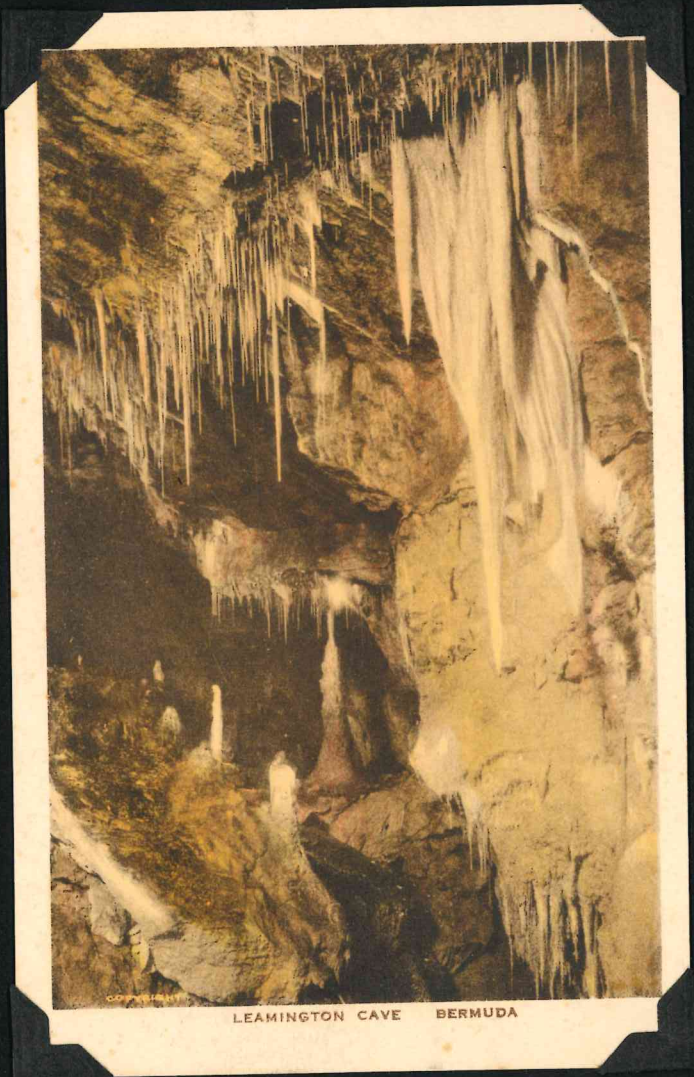


Banana Tree and Fruit Bermuda





LEAMINGTON CAVE BERMUDA



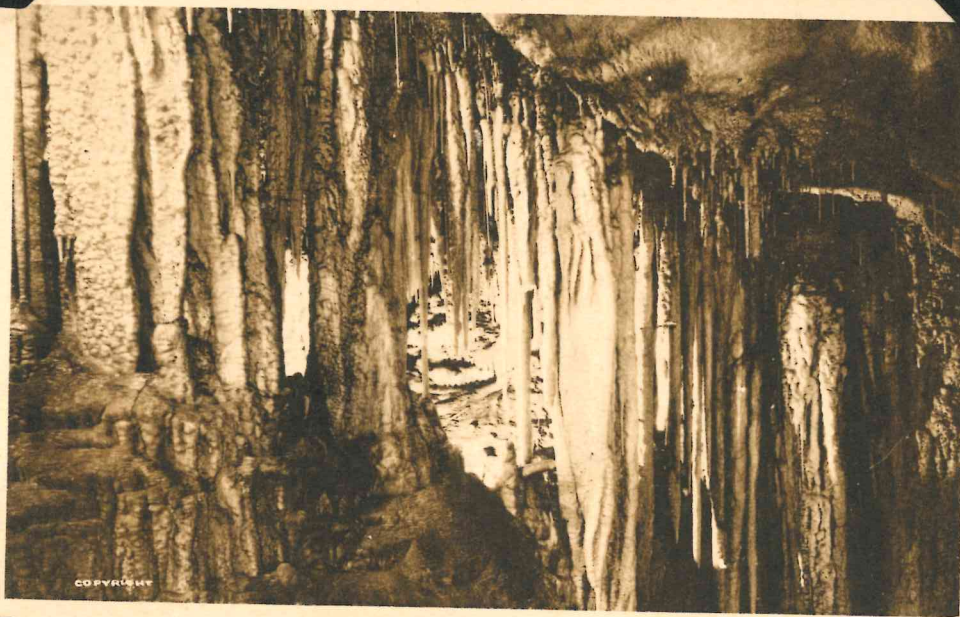
LEAMINGTON CAVE BERMUDA



LEAMINGTON CAVE BERMUDA



LEAMINGTON CAVE BERMUDA

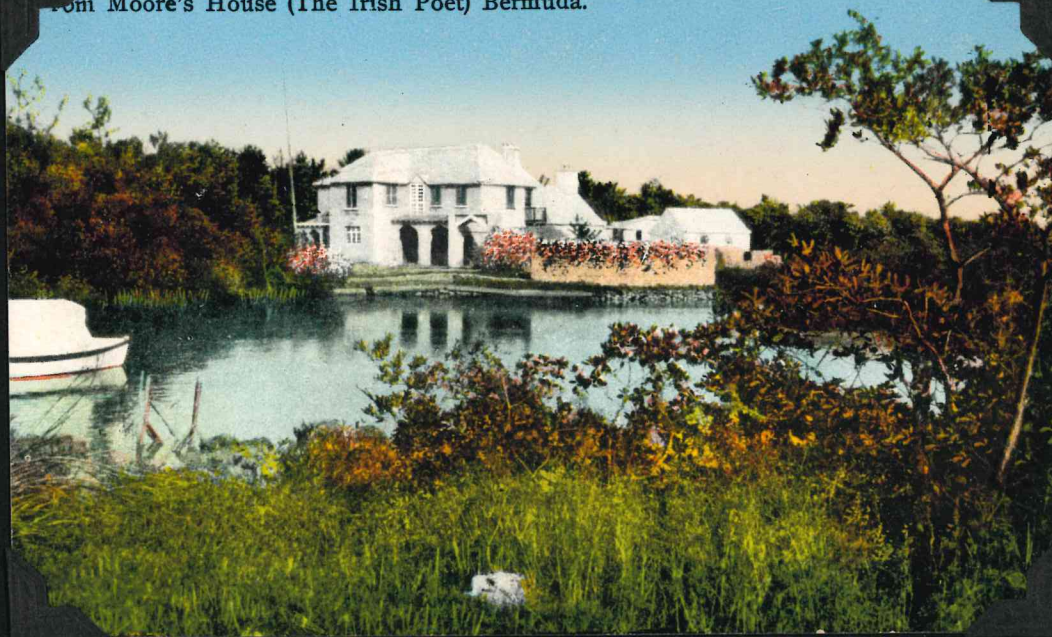


LEAMINGTON CAVE BERMUDA

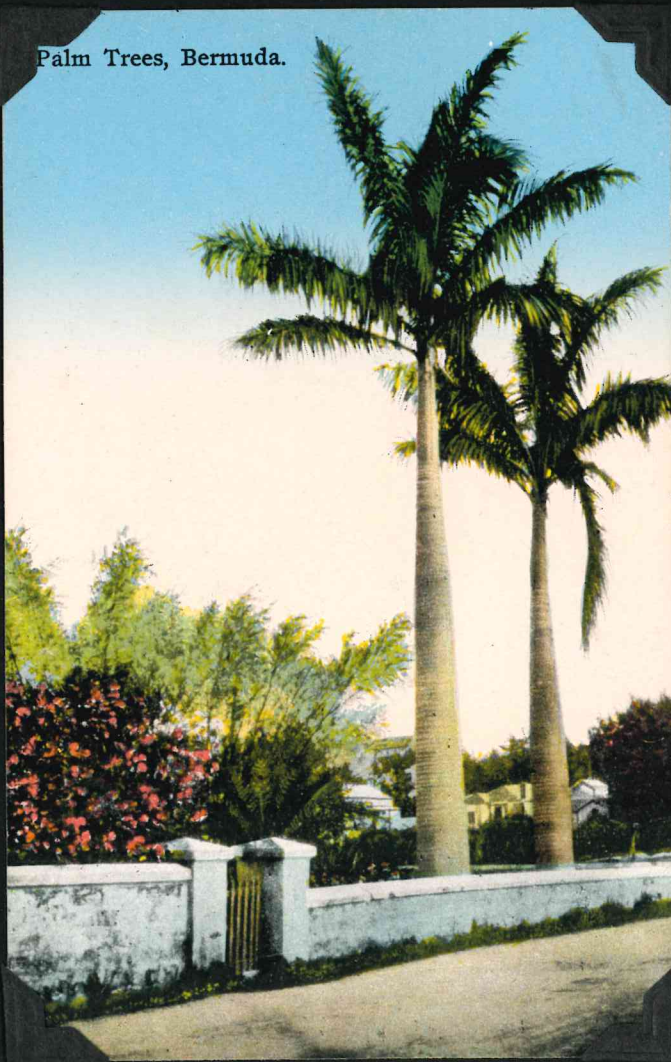
Date Palms, Bermuda.



Tom Moore's House (The Irish Poet) Bermuda.



Palm Trees, Bermuda.



Scene at Fairylands, Bermuda.

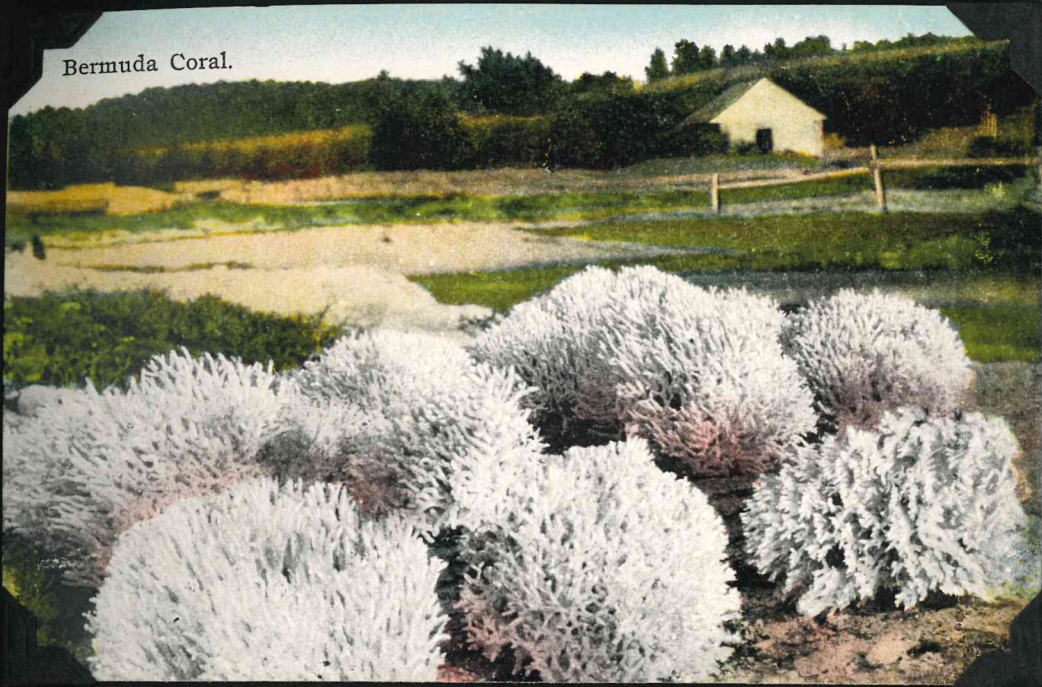


Seven Palms, South Shore, Bermuda.



Bamboo, Palmette Palm, and
Oleanders - Bermuda.

Bermuda Coral.



Oleanders, St. Georges, Bermuda.



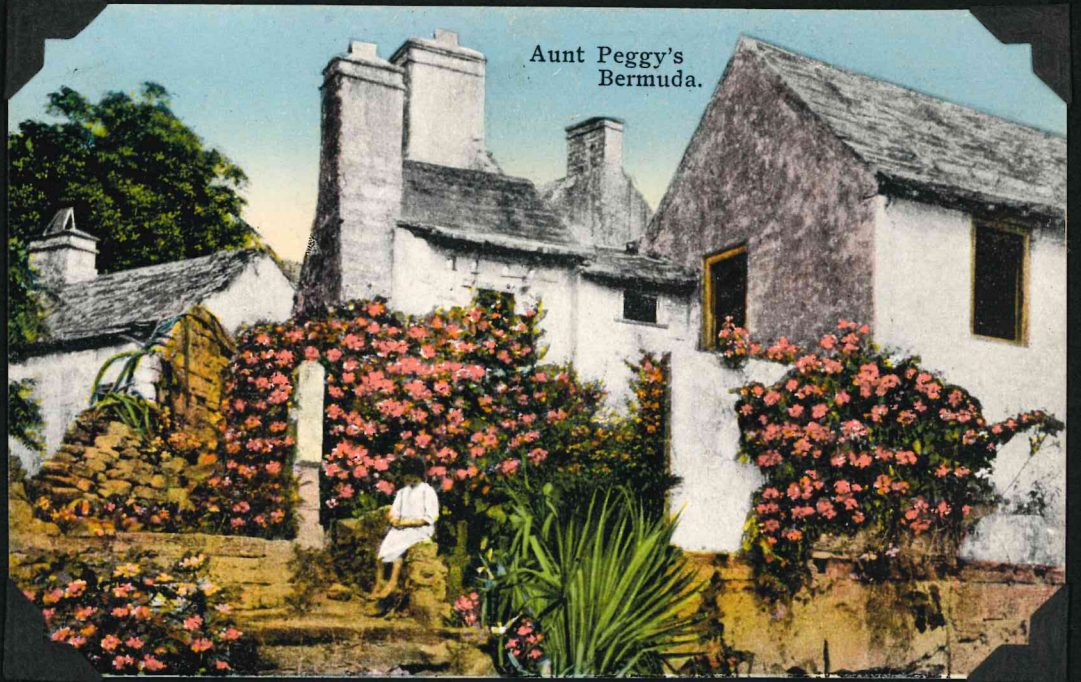
Date Palms
Custom House Garden, Bermuda



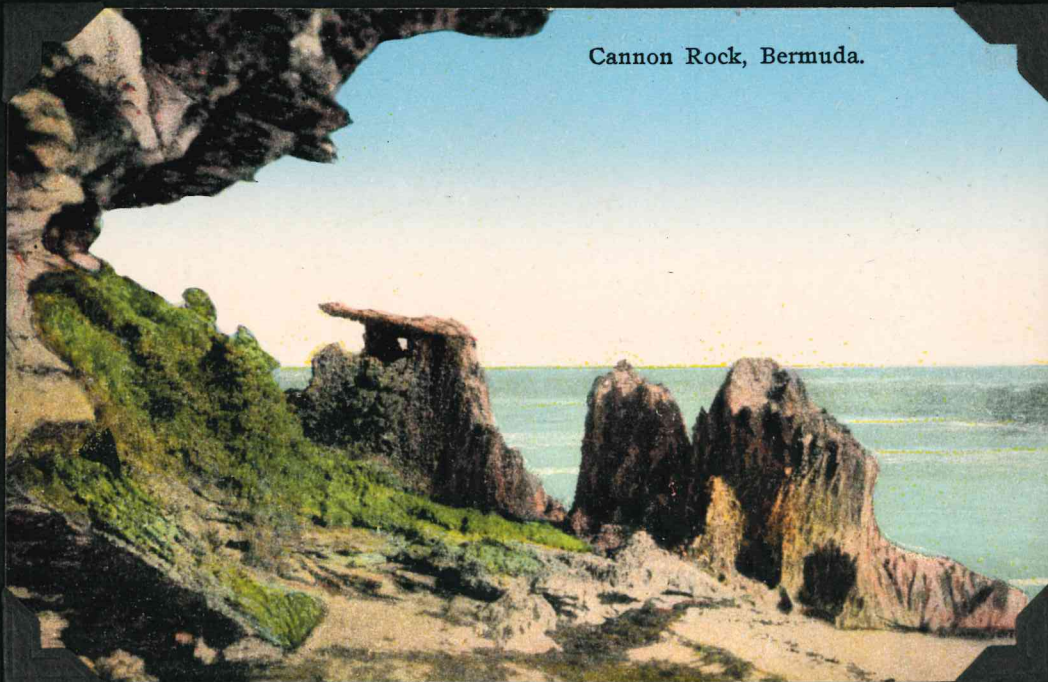
Date Palms at St. George
Bermuda.



Aunt Peggy's
Bermuda.



Cannon Rock, Bermuda.





Furness Bermuda Line

PHILCO

REG. U.S. PAT. OFF.

BERMUDA • NASSAU • CRUISE

- Music Programme -



Coronation March	--	--	<i>Meyerbeer</i>
In the Temple of the Sun God	--	--	<i>Elie</i>
Pirouette	--	--	<i>Finck</i>
Fallen Leaf	--	--	<i>Logan</i>
In a Monastery Garden	--	--	<i>Ketelbey</i>
Chanson sans Paroles	--	--	<i>Tschaikowsky</i>
Adieu	--	--	<i>Friml</i>
Lullaby	--	--	<i>Brahms</i>



Selection of Popular Numbers

Q.T.E.V. QUEEN OF BERMUDA

. Menu .

.....

Little Neck Clams on the Half Shell		
Fruit Cocktail—Maraschino		
Hors d'Oeuvres Varies		
Croute au Pot	Creme a la Reine	
Filet de Sole—Marguery	Filet d'Aigrefin—Tartare	
Ris de Veau—Maintenon	Caille en Cocotte aux Muscats	
Roast Vermont Turkey—Celery Dressing—Cranberry Sauce		
Braised Ham au Madere		
Prime Sirloin and Ribs of Beef—Horseradish		
Cauliflower—Hollandaise	String Beans	
Fried Egg Plant	Leaf Spinach	
Pommes Roti, Bermuda New, Puree and Garfield		
. COLD BUFFET :		
Sirloin of Beef	Oxford Brawn	Virginia Ham
Pressed Ox Tongue	Galantine of Chicken	Smoked Ham
Roast Lamb	Galantine of Duckling	
Salads:		
Heart of Romaine	Alexandra	Caprice Americaine
Thousand Isles, Mayonnaise, Russian, French, Roquefort and Lemon Dressings		
Savouries—Canape Ritchie	Croute Virginia	
Souffle Rothschild		
Coupe Florida	Fruit Jelly—Chantilly	
Friandises		
Ices—Pineapple	Neapolitan	Coffee
Dessert		
		Cafe
Iced Tea	Iced Coffee	

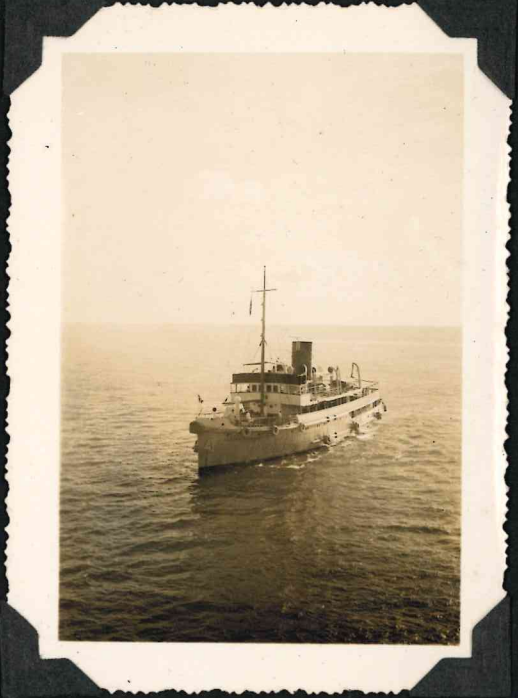
May 17

1934



The square at St. George's

"Castle Harbour"
The tender which
picked us up at St.
George's and took us
out to the "Queen."



Snapshots fail to describe
the masses of floral color
between the white buildings
or the magnificent perfume
which was wafted on the breeze
to the ship.





Away again, this time
headed for Nassau, 740
miles southwest of Bermuda

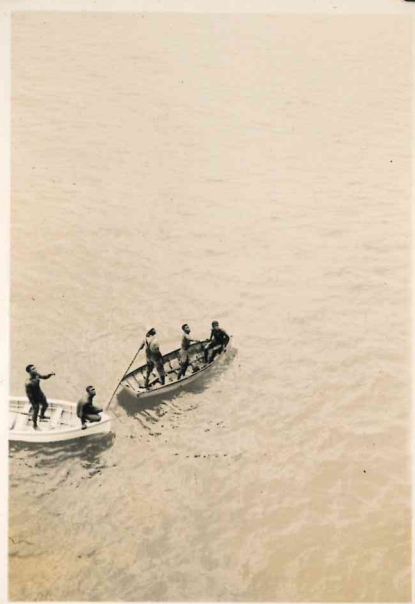


British Cruiser "York"
en route to target practice
at sea.



Golf driving Contest
Platform constructed as we left
New York on the sports deck at
the stern of the ship especially
for this purpose





FURNESS BERMUDA LINE

"QUEEN OF BERMUDA"

TENDER SERVICE

The Tender Service between Ship and Shore
will be as follows:

Leave Ship

11-30 a.m.
12-30 p.m.
1-30 p.m.
6-00 p.m.
7-00 p.m.
8-15 p.m.
10-30 p.m.

Leave Shore

12-00 Noon
1-00 p.m.
5-30 p.m.
6-30 p.m.
7-30 p.m.
10-00 p.m.
11-15 p.m.
12-00 Midnight

SHIP SAILS AT 12-30 A.M.

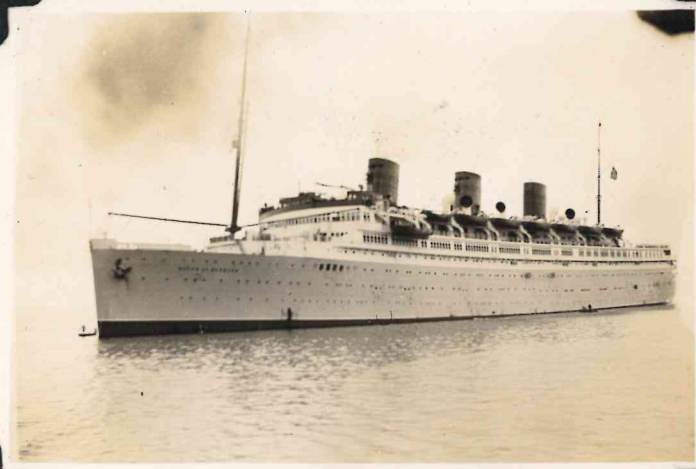
NASSAU, BAHAMAS

MAY 19, 1934











Sponges Fishing Boats — Nassau, Bahamas



Hooking Sponges — Nassau, Bahamas



Armaly's "Sponge Packing House" — Nassau, Bahamas



GEORGE STREET — NASSAU, BAHAMAS



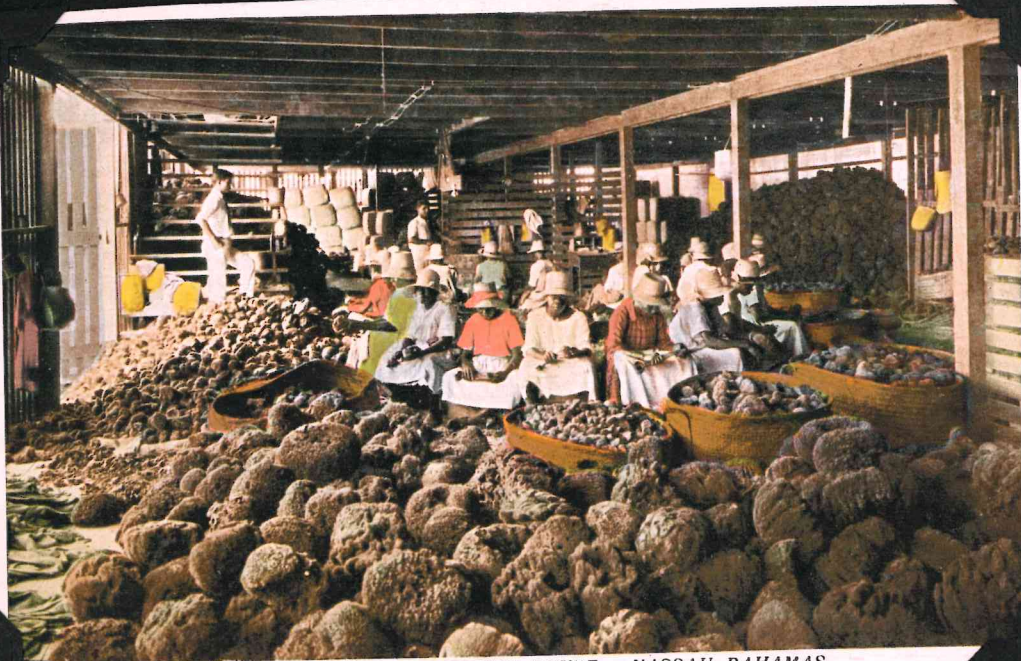
SILK COTTON TREE — NASSAU, BAHAMAS



ENTRANCE TO GOVERNMENT HOUSE — NASSAU, BAHAMAS



LANDING SPONGES — NASSAU, BAHAMAS



ESFAKIS' — SPONGE PACKING HOUSE — NASSAU, BAHAMAS



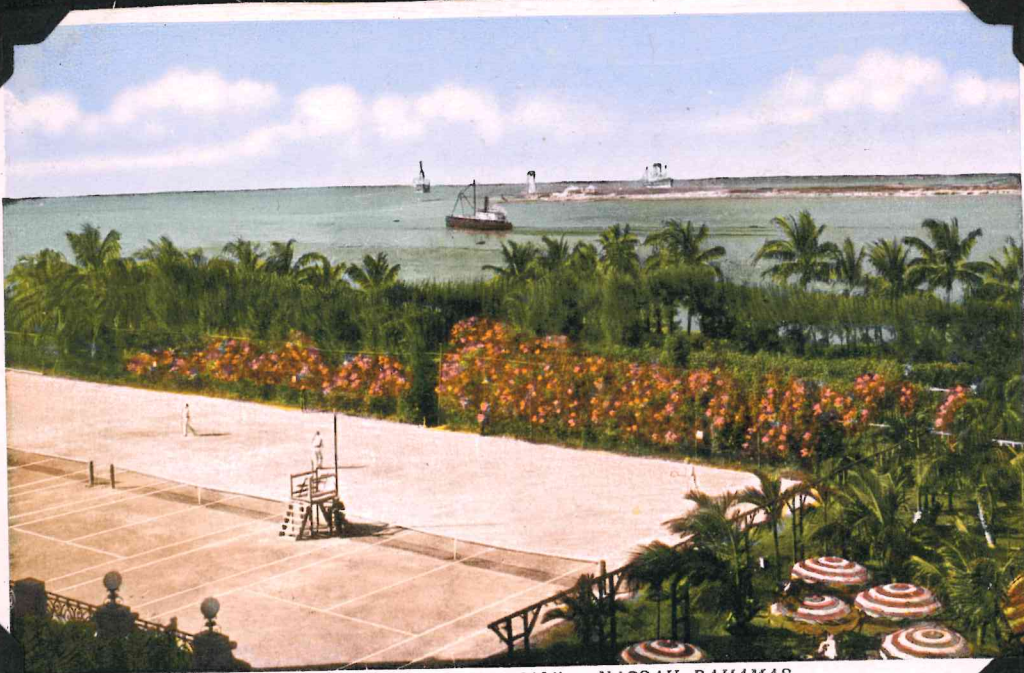
FORT MONTAGU BEACH AND HOTEL — NASSAU, BAHAMAS



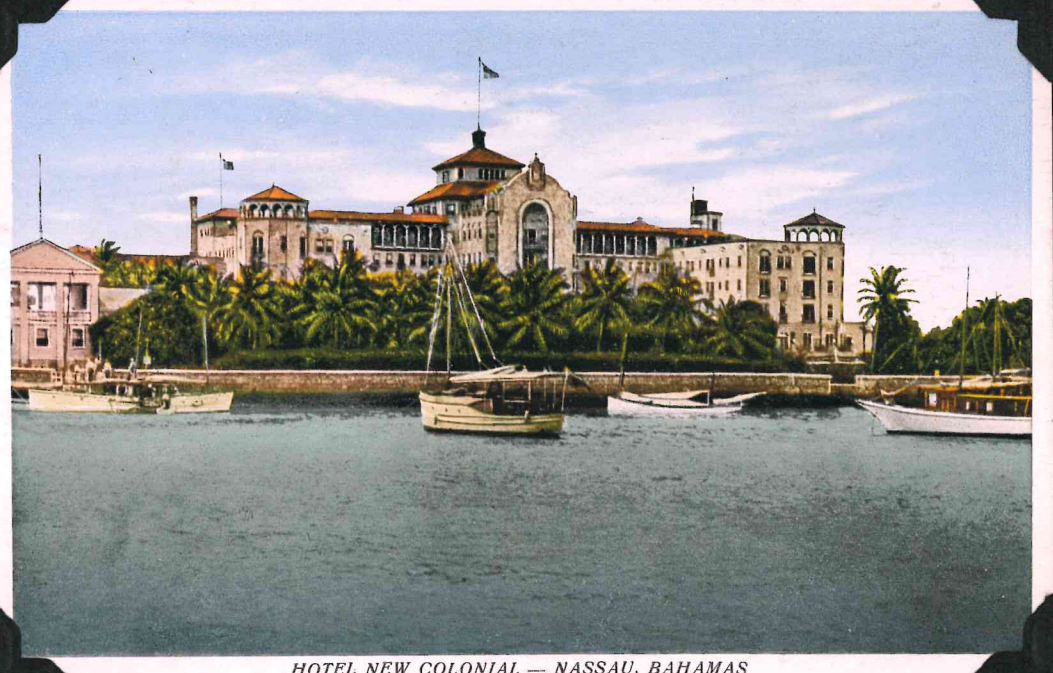
VICTORIA AVENUE — NASSAU, BAHAMAS



TREASURE ISLAND — NASSAU, BAHAMAS



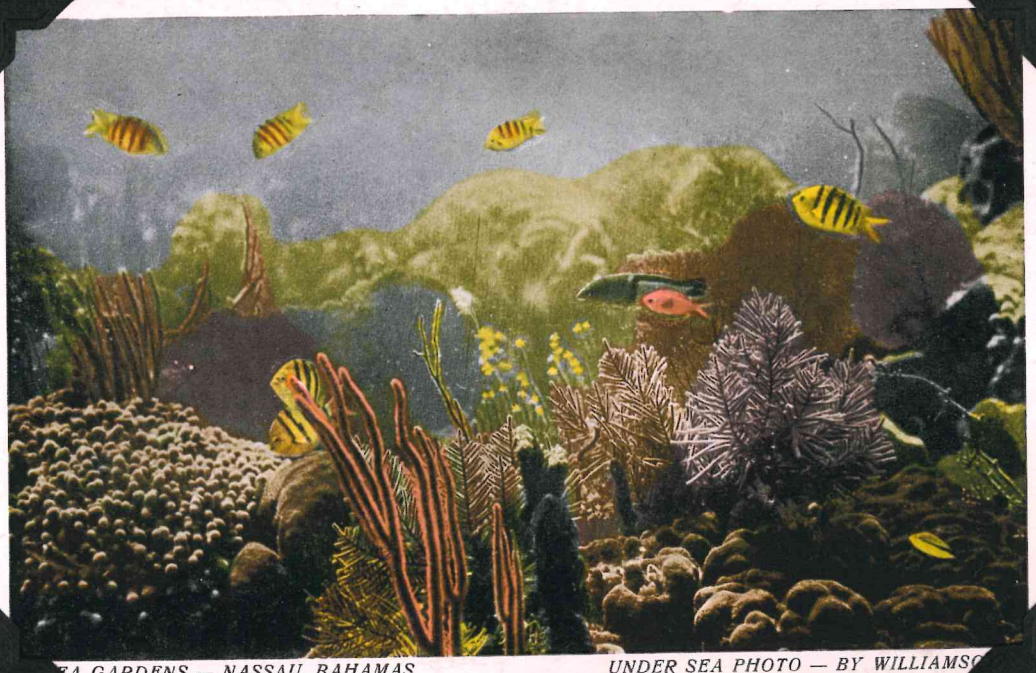
VIEW FROM "HOTEL COLONIAL" — NASSAU, BAHAMAS



HOTEL NEW COLONIAL — NASSAU, BAHAMAS



PARADISE BATHING BEACH — NASSAU, BAHAMAS



SEA GARDENS — NASSAU, BAHAMAS

UNDER SEA PHOTO — BY WILLIAMSON



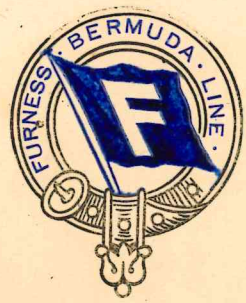




E. V. KNOWLTON

FURNESS BERMUDA LINE

Menu



Commander H. Jeffries-Davis
Officers and Crew
of the
Q.T.E.V. "QUEEN of BERMUDA"

wish their guests
(THE PHILCO RADIO AND TELEVISION CORPORATION)

Good-bye! and Good Luck!

Happy to meet
Sorry to part
Hoping to meet
again . . .

:: Programme of Music ::



Desert Song	--	Selection	--	Romberg
Sextet from Lucia di Lammermoor	--		--	Donizetti
Spanish Dances	--	--	--	Moszkowsky
Scenes Poetique	--	--	--	Godard
Song of India	--	--	--	Rimsky-Korsakow
Sonata	--	--	--	Beethoven

. Selection of Popular numbers .

Philco Cruise

Bermuda and Nassau

Diner d'Adieu

Grapefruit Cocktail Melon Glace

Hors d'Oeuvres Variees

Tortue Claire au Maderie

*Fillet of Snapper, Remoulade
Supreme de Filet, Americaine*

Tournedo de Bœuf Saute, Duroc

*Dindonneau Roti, Sauce Airelles
Selle d'Agneau, Sauce Menthe*

Haricot Verts Petits Pois

Asperges, Mousseline

Pommes Nouvelles and Chateau

Souffle Palmyre Coupe Jacques

Petits Fours

Dessert

Cafe

Monday, May 21, 1934

Chester K. Muckle

Thos Gibson

Walter Scotty Ross

Co Coleman

J. Frank George (Roy to you)

Bill Mosier

Frank Abbott
(Frank & Barnett)

W. Jones

W. Shillips

Wallace Huston

Geo. H. Hurst

D. McMillan