

PHILCO SERVICE

RADIO MODEL 46-1201

TESTS TO ISOLATE TROUBLE WITHIN SECTION 4

1. Set the volume control at maximum. Rotate the tuning condenser through its entire range. Any scraping noise from the speaker indicates bent plates, or dirt between plates or on wiper contacts. Remedy such conditions before proceeding further.
2. Attach the positive lead of a 20,000-ohms-per-volt meter to B- and the prod end of the negative lead through a 50,000-ohm

resistor to point P. Set the meter on a 10-volt or similar range, and rotate the tuning condenser through its entire range. Absence of voltage at any point indicates that the oscillator is not functioning. If so, check the components listed in the first test below.

3. Connect the signal generator as for previous tests, tune the generator to 1000 kc., and proceed as below.

TEST POINTS	NORMAL INDICATION	POSSIBLE CAUSE OF ABNORMAL INDICATION
M to B- (Rotate tuning condenser until signal is heard).	Loud, clear signal from speaker.	Defective 7A8, T401, R400, or C401B.
N to B-.	Clear signal, louder than preceding test.	Defective T400 or open C400.

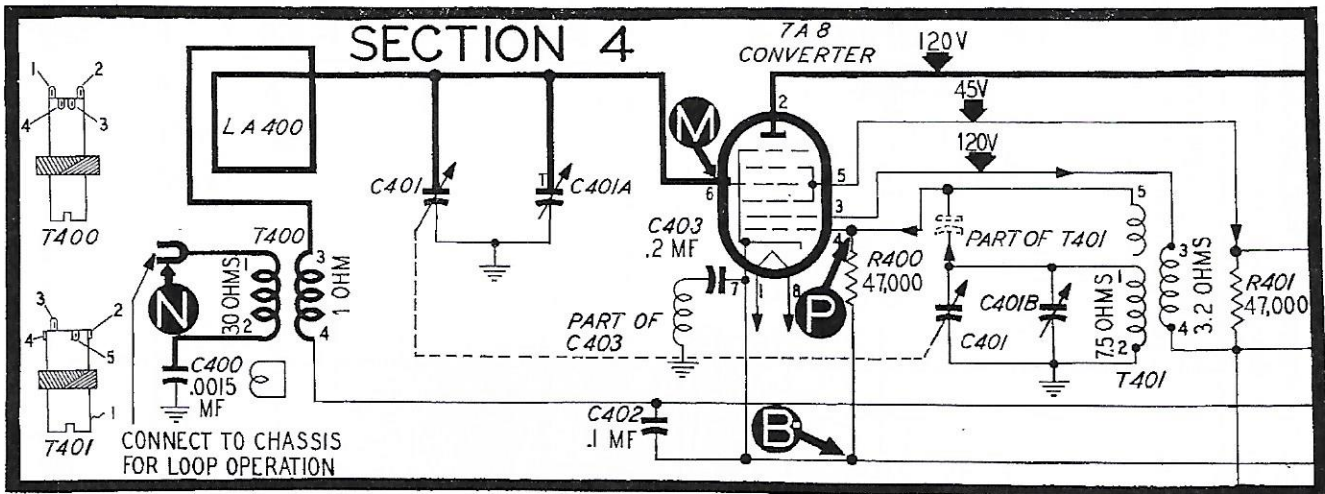


Figure 9. Section 4 schematic.

TP-420-D

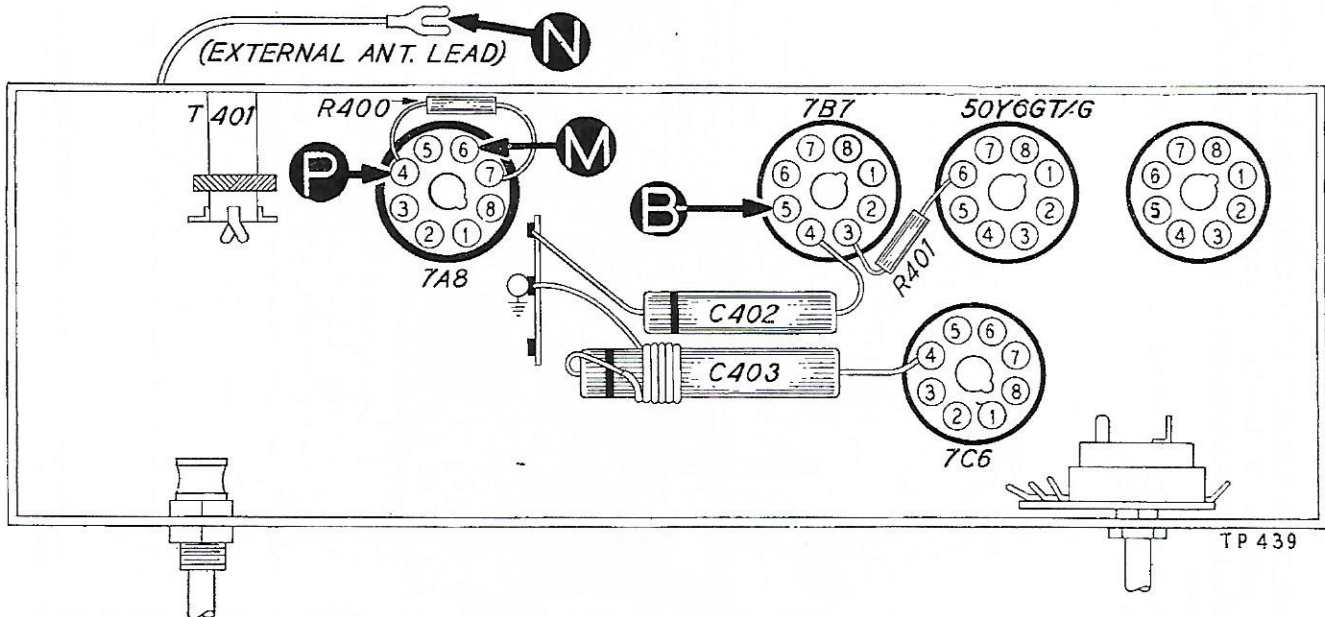


Figure 10. Bottom view, showing Section 4 test points.

TP 439