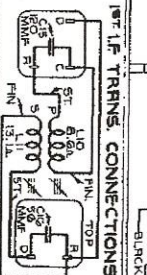
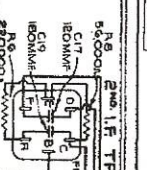
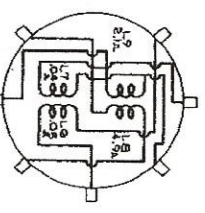
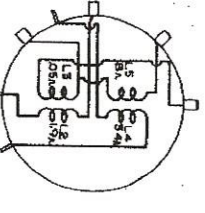
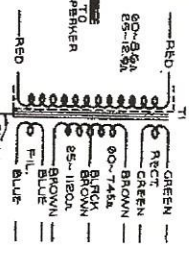
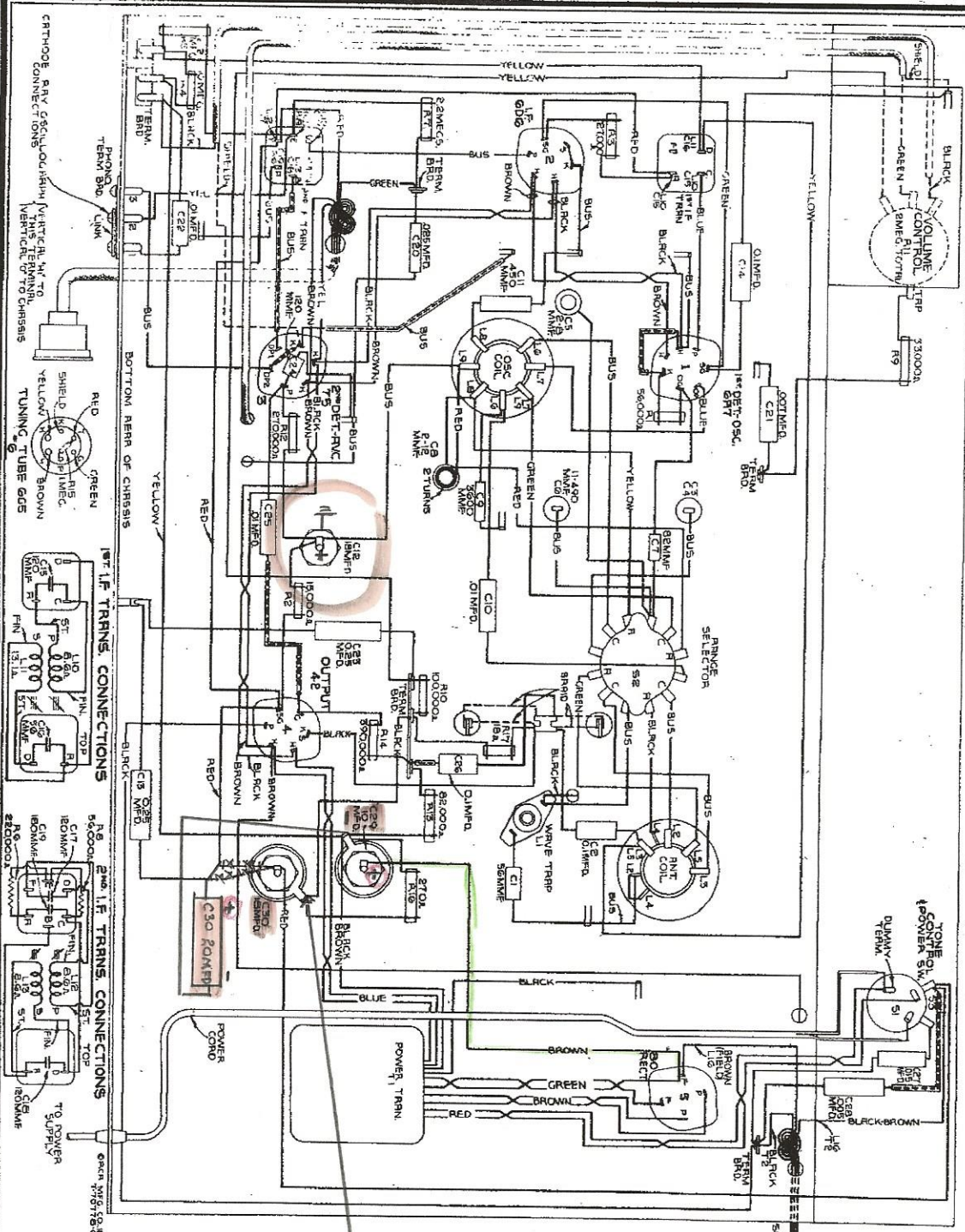


**POWER SUPPLY RATINGS**

Rating A	105-125 volts, 50-60 cycles, 75 watts	Alignment Frequencies
Rating B	105-125 volts, 25-60 cycles, 75 watts	"Standard Broadcast" (A) 600 kc (osc.), 1,700 kc (osc.)
Rating C	100-125/200-250 volts, 50-60 cycles, 75 watts	"Short Wave" (C) 20,000 kc (osc., ant.)
<b>POWER OUTPUT RATING</b>		
Undistorted	20 watts	Electrodynamic
Maximum	45 watts	Type
		Voice Coil Impedance
		2 1/2 ohms at 400 cycles



RCA MFG. CO., INC. \*