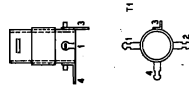
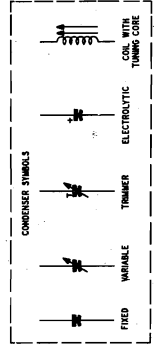
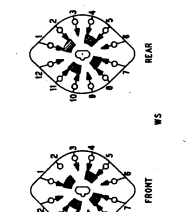


CAUTION—ONE END OF AC LINE IS CONNECTED DIRECTLY TO CHASSIS

NOTES:
 * ALL RESISTOR VALUES IN OHMS AND ALL CONDENSER VALUES IN μF UNLESS OTHERWISE MARKED
 * LESS THAN 1 OHM
 * ALL VOLTAGES MEASURED WITH A 20,000-OHMS-PER-VOLT METER BETWEEN MEASURED POINTS INDICATED AND 8 MINUS, AT A LINE VOLTAGE OF 117V AC



TUBE-SAWER RESISTOR AT ROOM TEMPERATURE RESISTANCE DROPS TO ROOM TEMPERATURE AS TUBES WARM UP



2 SECTION WATER SWITCH SHOWN IN BROADCAST POSITION AS VIEWED FROM FRONT WITH CHASSIS INVERTED

SECTIONS OF SWITCHES NUMBERED W51 W52, FROM FRONT TO RIGHT

TP 1-1763

Figure 4. Philco Radio Model 52-944, Schematic Diagram