

Westinghouse Electric Corp.

Model: WR258 (All Runs)

Chassis:

Year: Pre June 1940

Power:

Circuit:

IF:

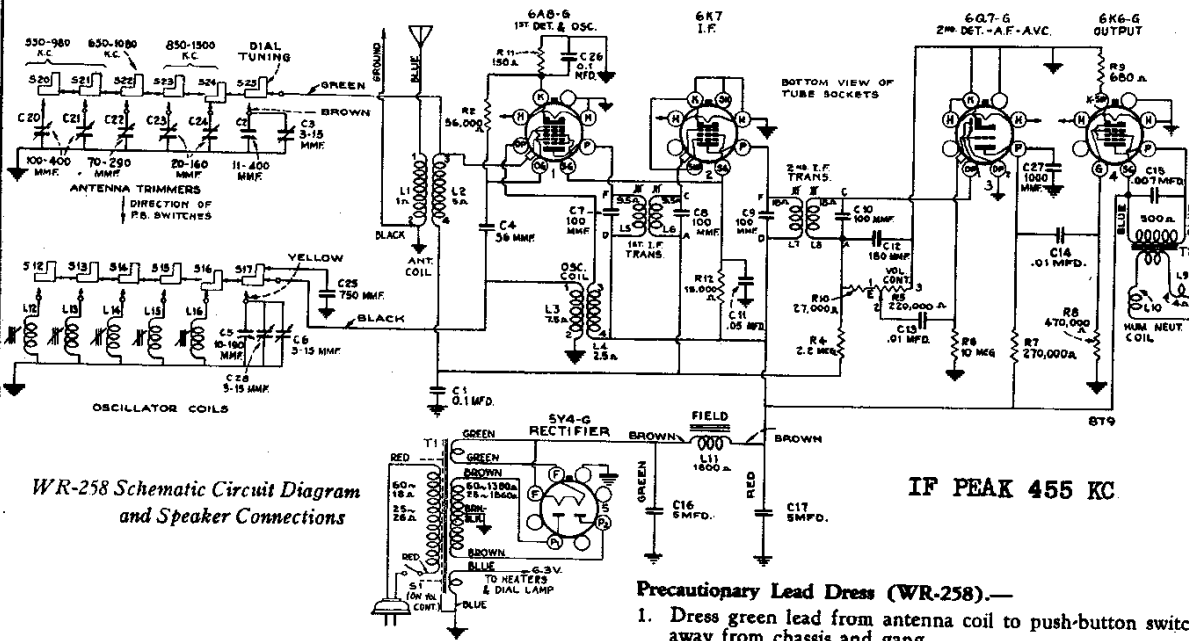
Tubes:

Bands:

Resources

Riders Volume 11 - WESTINGHOUSE 11-18

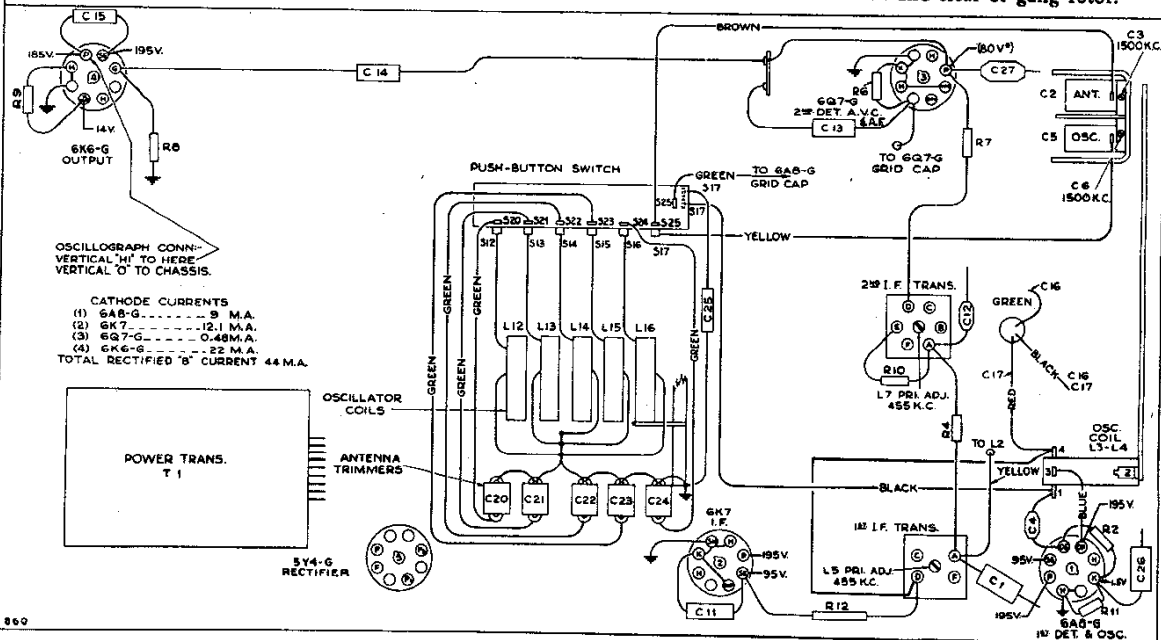
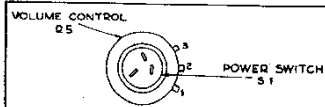
MODEL WR258 (All Runs)
Schematic, Voltage WESTINGHOUSE ELEC. SUPPLY CO.
Chassis Wiring
Lead Dress



WR-258 Schematic Circuit Diagram and Speaker Connections

Precautionary Lead Dress (WR-258).—

1. Dress green lead from antenna coil to push-button switch away from chassis and gang.
2. Dress green leads on push-button unit close to coils and away from adjustment screws.
3. Dress power cord and transformer primary leads toward left end of chassis.
4. Dress C27 close to chassis and clear of gang rotor.



WR-258 Bottom View of Chassis Showing Socket Voltages, Parts Location, and R-F Wiring

Measurements made to chassis unless otherwise indicated, with set tuned to quiet point and volume control at minimum. Values should hold within approximately $\pm 20\%$ with 117-volt a-c supply.

NOTE: Values with star () are operating voltages in circuits with high series-resistance. These voltages will be

lower when measured with a voltmeter drawing current through the circuit. Exact voltage may be measured with a vacuum-tube voltmeter if desired. The other values will not be affected by measuring with an ordinary high-resistance voltmeter.